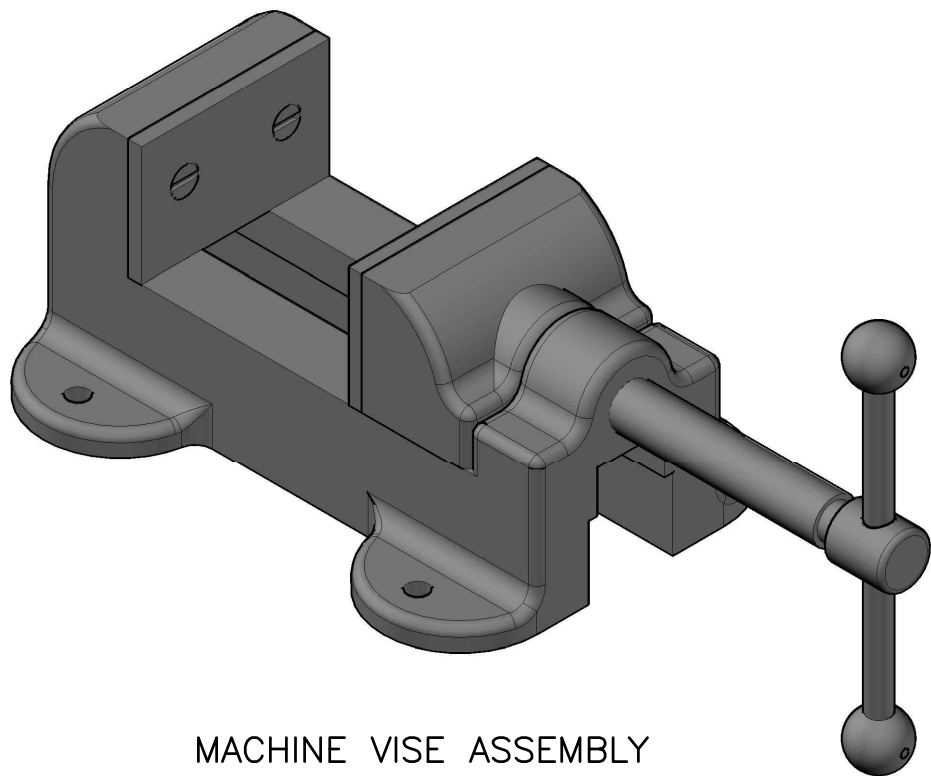


MACHINE VISE ASSEMBLY  
(CLOSE)



MACHINE VISE ASSEMBLY  
(OPEN)

## PARTS LIST

ITEM #	QTY.	PART NAME	MATERIAL
1	1	BASE	CAST IRON
2	1	SLIDING JAW	CAST IRON
3	2	JAW PLATE	SAE #3140
4	1	WISE SCREW	SAE #3140
5	1	COLLAR	SAE #1020
6	1	SPECIAL KEY	SAE #1020
7	1	HANDLE ROD	COLD ROLLED STEEL
8	2	HANDLE BALL	SAE #1020
9	2	SLIDE KEY	SAE #1020
10	2	SET SCREW	SAE #1016
11	4	1/4 FL HD MACH SCR	TYPICAL
12	1	#000 TAPER PIN	TYPICAL

## LEGEND:

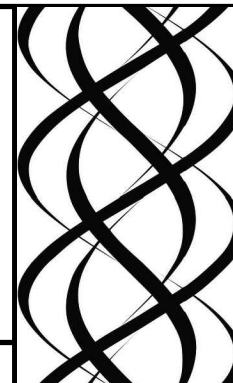
- DEGREES
- ∅ DIAMETER
- R RADIUS
- || COUNTER BORE
- ∇ DEPTH

GENERAL NOTES: ALL FILLETS AND ROUNDS 1/8 RADIUS UNLESS NOTED OTHERWISE

**DDGT**

DIGITAL DESIGN  
GRAPHICS  
TECHNOLOGY

WWW.DDGT.NET



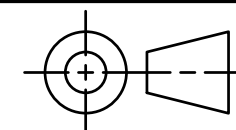
Alexzander Kuykendall

Draftsman and Graphic Designer

(707) 980-5920

alexjkuykendall@gmail.com

[www.ddgt.net/StudentPages/akuykendall](http://www.ddgt.net/StudentPages/akuykendall)



TOLERANCES UNLESS SPECIFIED

DECIMAL INCHES:

X = ±.020

XX = ±.010

XXX = ±.005

FRACTIONAL ± 1/64"

ANGLES ±1 DEGREE

SURFACES 32/

COURSE: DDGT 240

AUTOCAD DRAWING NAME:

MACHINE VISE

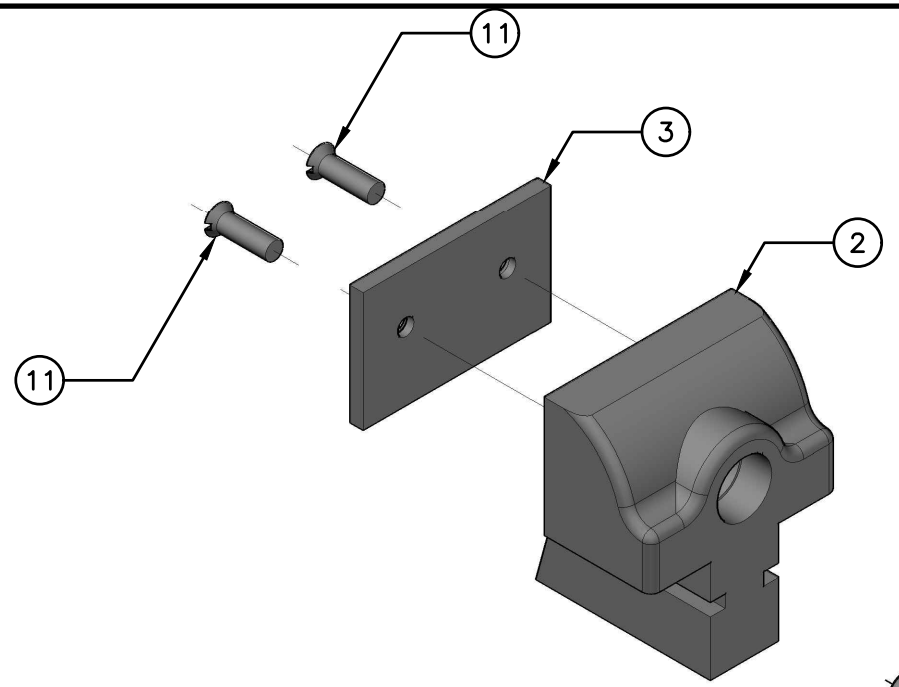
FIG#: 14-71

DRAFTER: A. KUYKENDALL

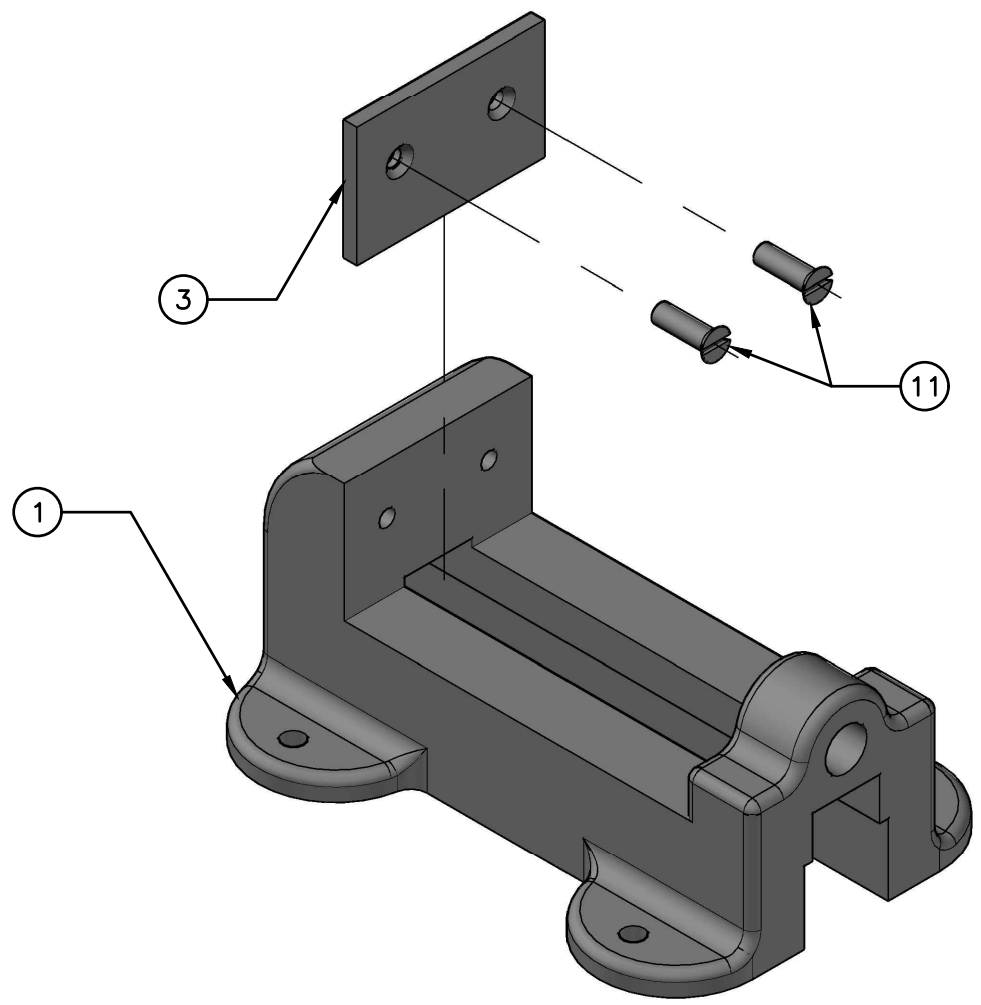
DATE: 9/8/16

SCALE: 1:2

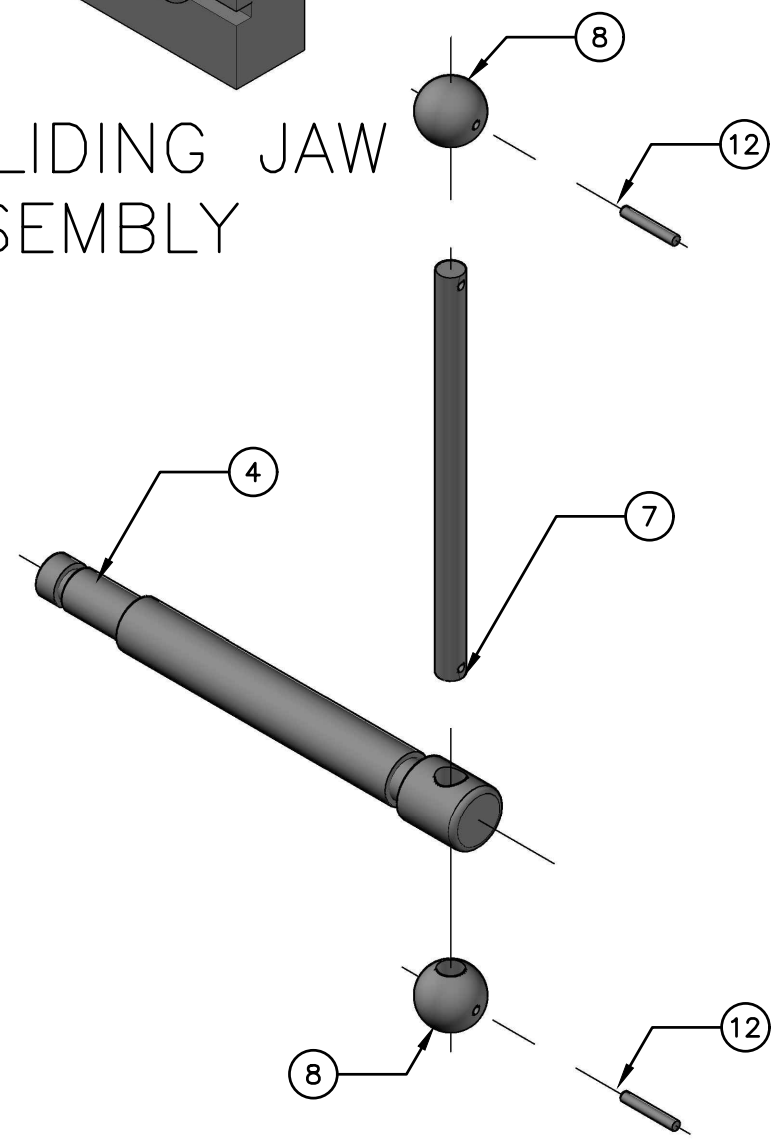
PAGE #: 1 OF 6



EXPLODED SLIDING JAW SUB-ASSEMBLY



EXPLODED BASE SUB-ASSEMBLY



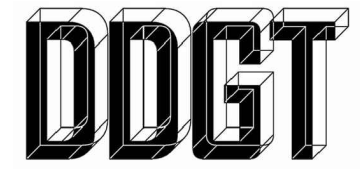
HANDLE SUB-ASSEMBLY

### PARTS LIST

ITEM #	QTY.	PART NAME
1	1	BASE
2	1	SLIDING JAW
3	2	JAW PLATE
4	1	WISE SCREW
5	1	COLLAR
6	1	SPECIAL KEY
7	1	HANDLE ROD
8	2	HANDLE BALL
11	4	1/4 FL HD MACH SCR
12	1	#000 TAPER PIN

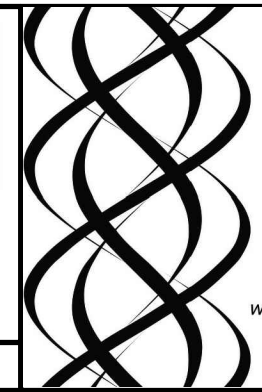
### LEGEND:

- ° DEGREES
- ∅ DIAMETER
- R RADIUS
- || COUNTER BORE
- ∇ DEPTH



DIGITAL DESIGN  
GRAPHICS  
TECHNOLOGY

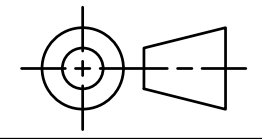
WWW.DDGT.NET



Alexzander Kuykendall  
Draftsman and Graphic Designer

(707) 980-5920  
alexjkuykendall@gmail.com

[www.ddgt.net/StudentPages/akuykendall](http://www.ddgt.net/StudentPages/akuykendall)



TOLERANCES UNLESS SPECIFIED  
DECIMAL INCHES:  
X = ±.020  
XX = ±.010  
XXX = ±.005  
FRACTIONAL ± 1/64"  
ANGLES ±1 DEGREE

SURFACES 32/

COURSE: DDGT 240

AUTOCAD DRAWING NAME:

MACHINE VISE

FIG#: 14-71

DRAFTER: A. KUYKENDALL

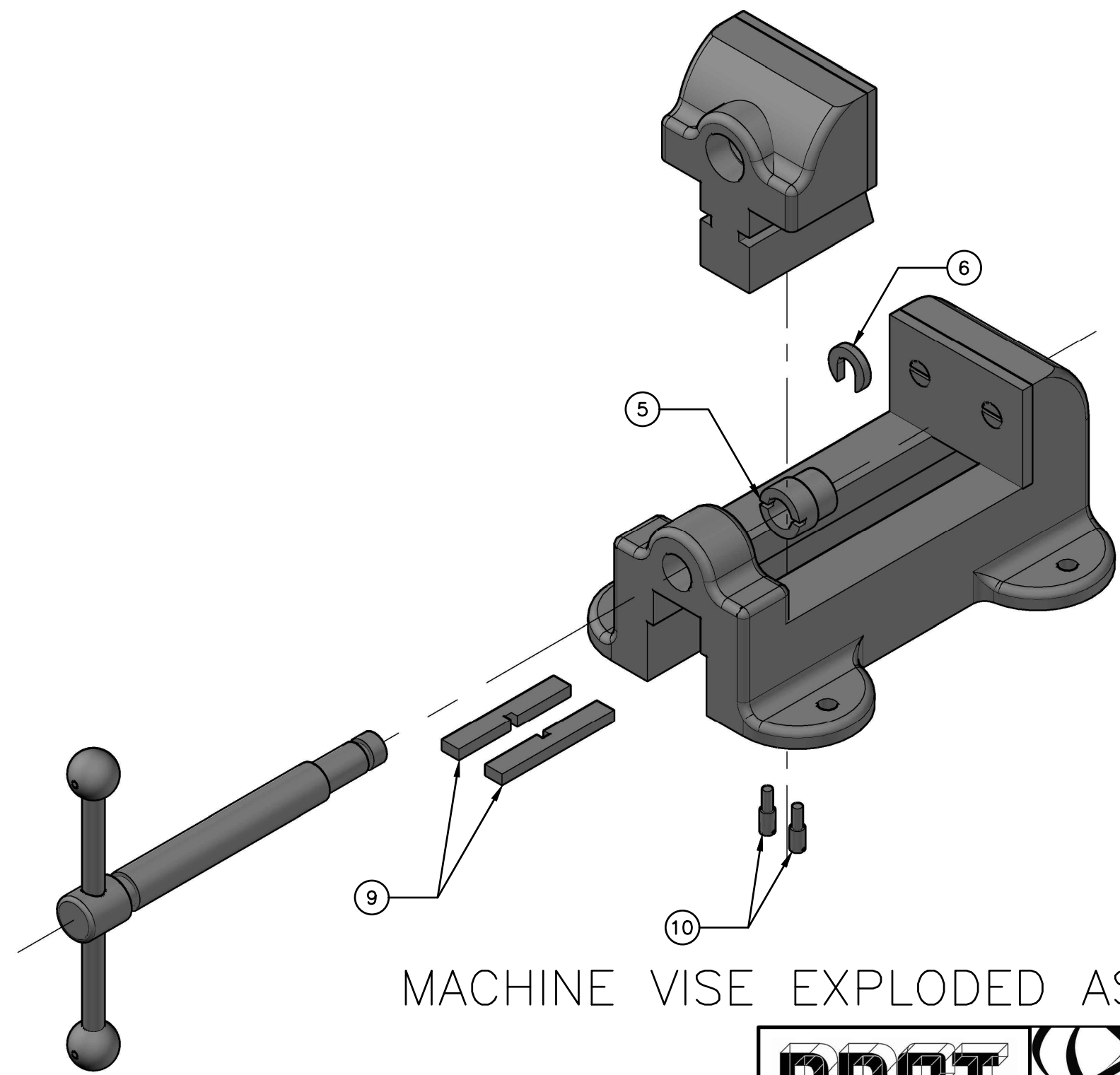
DATE: 9/8/16

SCALE: 1:2

PAGE #: 2 OF 6

# PARTS LIST

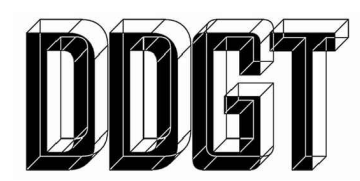
ITEM #	QTY.	PART NAME
1	1	BASE
2	1	SLIDING JAW
3	2	JAW PLATE
4	1	WISE SCREW
5	1	COLLAR
6	1	SPECIAL KEY
7	1	HANDLE ROD
8	2	HANDLE BALL
9	2	SLIDE KEY
10	2	SET SCREW
11	4	1/4 FL HD MACH SCR
12	1	#000 TAPER PIN



MACHINE VISE EXPLODED ASSEMBLY

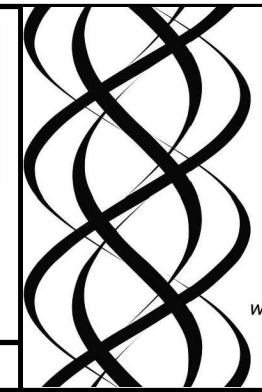
## LEGEND:

- ° DEGREES
- ∅ DIAMETER
- R RADIUS
- | | COUNTER BORE
- ∇ DEPTH



DIGITAL DESIGN  
GRAPHICS  
TECHNOLOGY

WWW.DDGT.NET



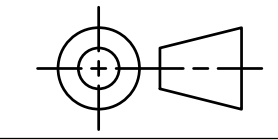
Alexzander Kuykendall

Draftsman and Graphic Designer

(707) 980-5920

alexjkuykendall@gmail.com

www.ddgt.net/StudentPages/akuykendall



TOLERANCES UNLESS SPECIFIED

DECIMAL INCHES:

X = ±.020

XX = ±.010

XXX = ±.005

FRACTIONAL ± 1/64"

ANGLES ±1 DEGREE

SURFACES 32/

COURSE: DDGT 240

AUTOCAD DRAWING NAME:

MACHINE VISE

FIG#: 14-71

DRAFTER: A. KUYKENDALL

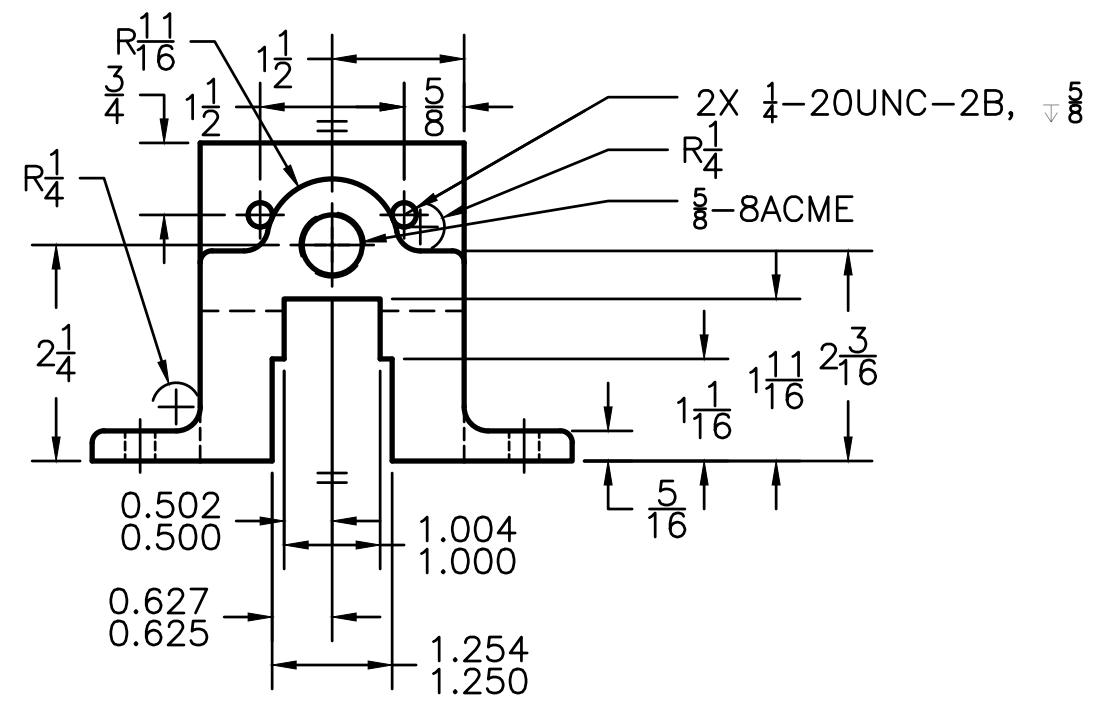
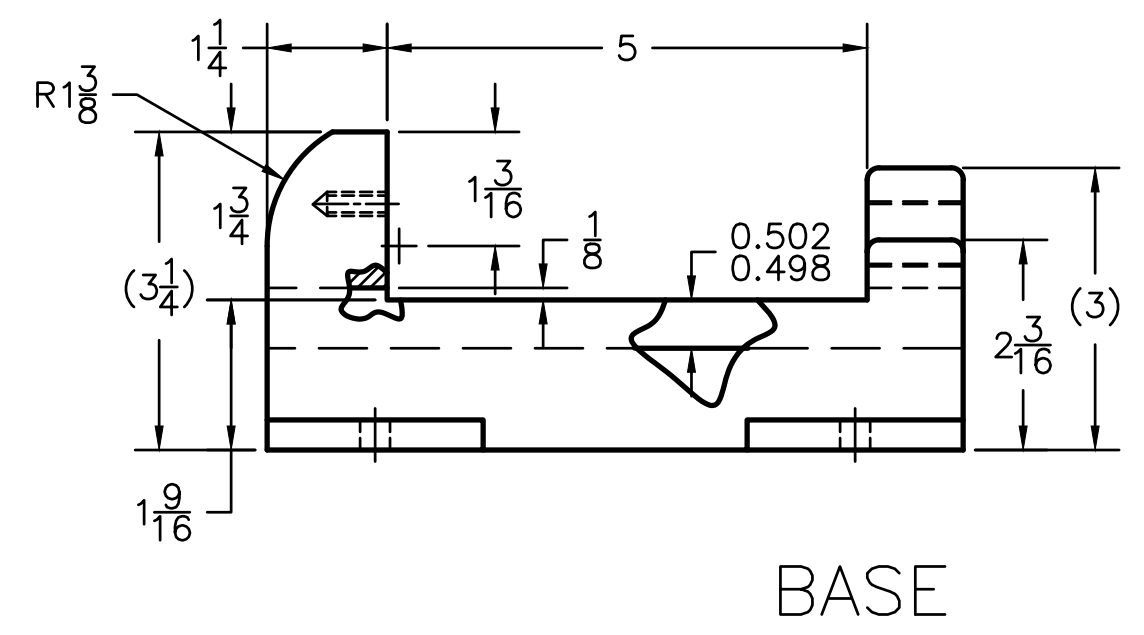
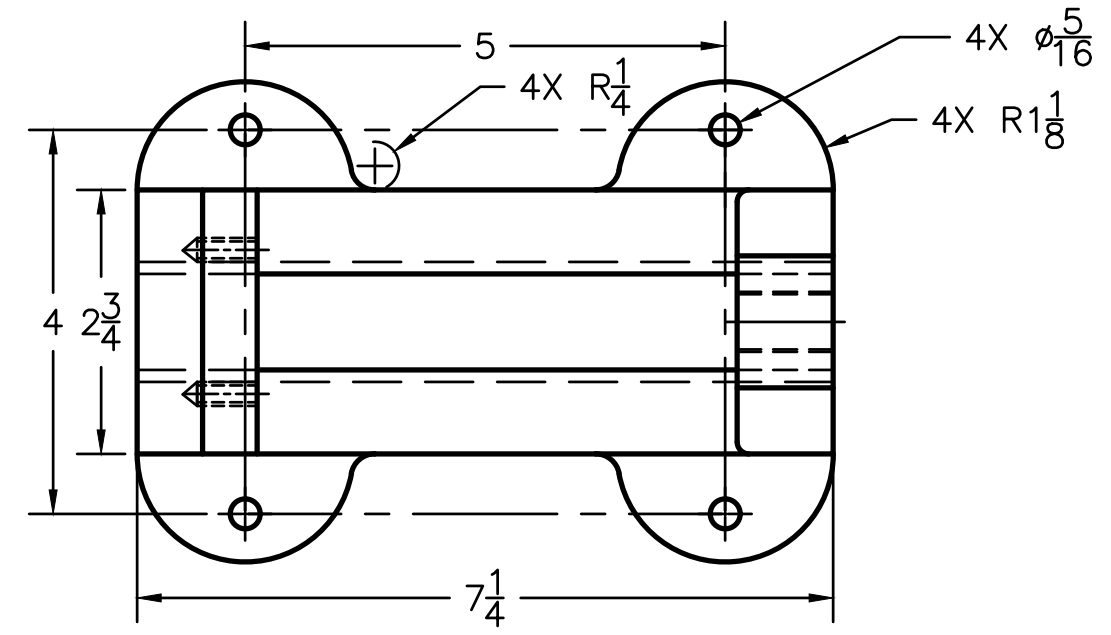
DATE: 9/8/16

SCALE: 1:2

PAGE #: 3 OF 6

# PARTS LIST

ITEM #	QTY.	PART NAME
1	1	BASE



**LEGEND:**  
 ° DEGREES  
 Ø DIAMETER  
 R RADIUS  
 | | COUNTER BORE  
 ∇ DEPTH

GENERAL NOTES: ALL FILLETS AND ROUNDS  $\frac{1}{8}$  RADIUS UNLESS NOTED OTHERWISE

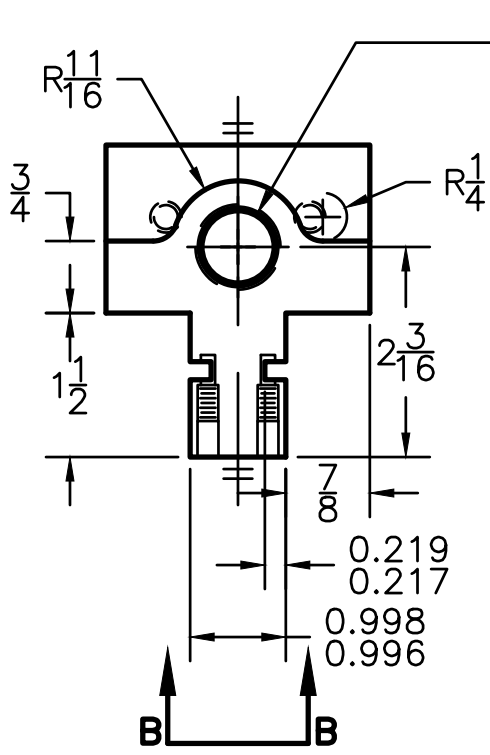
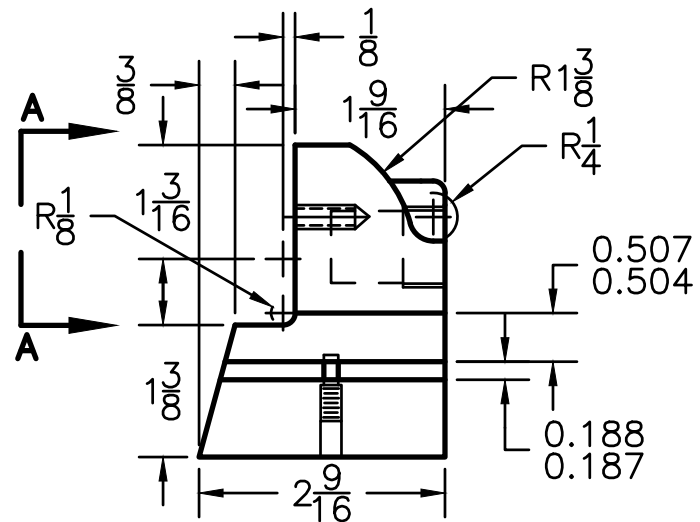
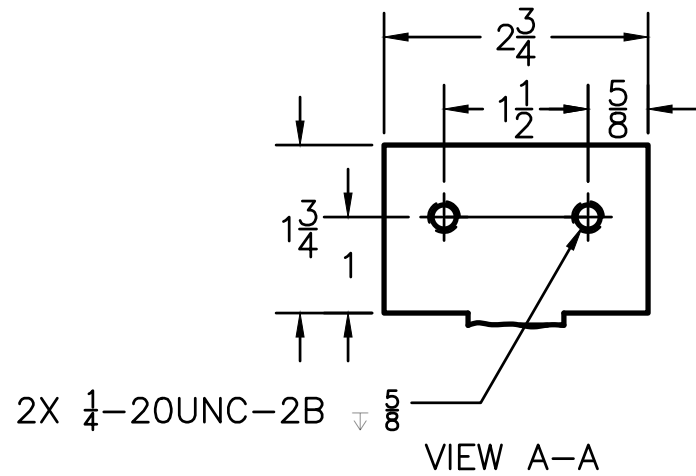
**DDGT**  
 DIGITAL DESIGN  
 GRAPHICS  
 TECHNOLOGY  
 WWW.DDGT.NET

**Alexzander Kuykendall**  
 Draftsman and Graphic Designer  
 (707) 980-5920  
 alexjkuykendall@gmail.com  
 www.ddgt.net/StudentPages/akuykendall

**TOLERANCES UNLESS SPECIFIED**  
 DECIMAL INCHES:  
 X = ±.020  
 XX = ±.010  
 XXX = ±.005  
 FRACTIONAL ± 1/64"  
 ANGLES ±1 DEGREE  
 SURFACES  $\frac{32}{\sqrt{\quad}}$

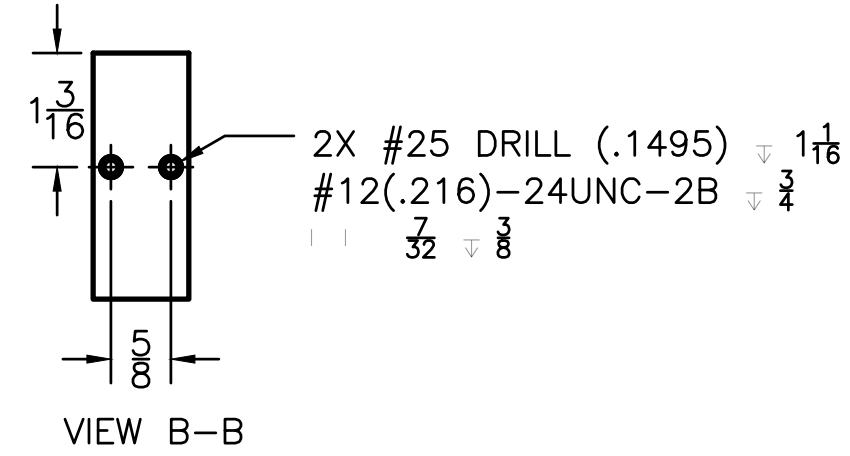
COURSE:	DDGT 240
AUTOCAD DRAWING NAME:	MACHINE VISE
FIG#:	14-71
DRAFTER:	A. KUYKENDALL
DATE:	9/8/16
SCALE:	1:2
PAGE #:	4 OF 6

PARTS LIST		
ITEM #	QTY.	PART NAME
2	1	SLIDING JAW



∅0.750 X 1 3/16, FLAT BOTTOM  
 13/16-20UNEF-3B, LH 7/16


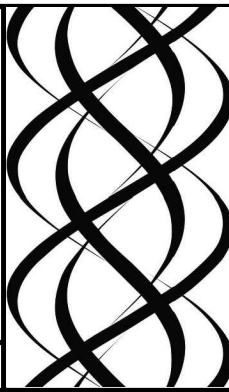
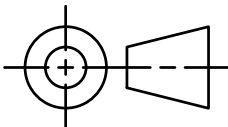
SLIDING JAW



**LEGEND:**

- ° DEGREES
- ∅ DIAMETER
- R RADIUS
- || COUNTER BORE
- ∇ DEPTH

GENERAL NOTES: ALL FILLETS AND ROUNDS 1/8 RADIUS UNLESS NOTED OTHERWISE

 DIGITAL DESIGN GRAPHICS TECHNOLOGY WWW.DDGT.NET		Alexzander Kuykendall Draftsman and Graphic Designer (707) 980-5920 alexjkuykendall@gmail.com www.ddgt.net/StudentPages/akuykendall		COURSE: DDGT 240
				AUTOCAD DRAWING NAME: MACHINE VISE
			TOLERANCES UNLESS SPECIFIED DECIMAL INCHES: X = ±.020 XX = ±.010 XXX = ±.005 FRACTIONAL ± 1/64" ANGLES ±1 DEGREE SURFACES 32/√	FIG#: 14-71
				DRAFTER: A. KUYKENDALL
				DATE: 9/8/16
				SCALE: 1:2
			PAGE #: 5 OF 6	

