

ROBOTIC ARM ASSEMBLY
SCALE 1 / 2

PARTS LIST				
ITEM	QTY	PART NUMBER	MATERIAL	DESCRIPTION
1	1	BASE E01	ALUMINUM	.25 THICKNESS
2	1	ARM E01	ALUMINUM	
3	1	ARM E02	ALUMINUM	
4	1	SLIDING TUBE	STEEL	
4.1	1	SLIDING TUBE BOTTOM	STEEL	
4.2	1	SLIDING TUBE TOP	STEEL	
5	1	VACUUM CONNECTOR	STEEL	
6	1	VACUUM CUP	RUBBER	.125 THICKNESS
7	1	BASE CAP	ALUMINUM	.125 THICKNESS
8	1	ELBOW CAP	ALUMINUM	
9	1	VACUUM CAP	ALUMINUM	.125 THICKNESS
10	3	CAP SCREW	STEEL	10-36 UNS
11	1	HOSE	TO BE DETERMINED	11" LENGTH O.D. .125" I.D. .05"

GENERAL NOTES:
ALL FILLETS TO BE R.06 UNLESS OTHERWISE SPECIFIED
ALL CHAMFERS TO BE .02 X 45° UNLESS OTHERWISE SPECIFIED

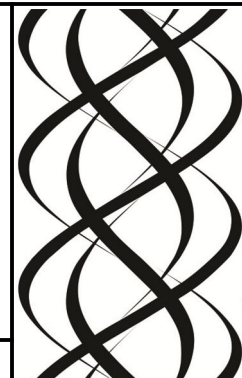
LEGEND:

- ∅ DIAMETER
- R RADIUS
- ° DEGREE
- ⌊ COUNTERBORE
- ∇ DEPTH

DDGT

DIGITAL DESIGN
GRAPHICS
TECHNOLOGY

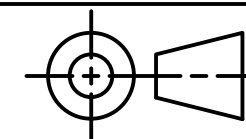
WWW.DDGT.NET



Alexzander Kuykendall
Draftsman and Graphic Designer

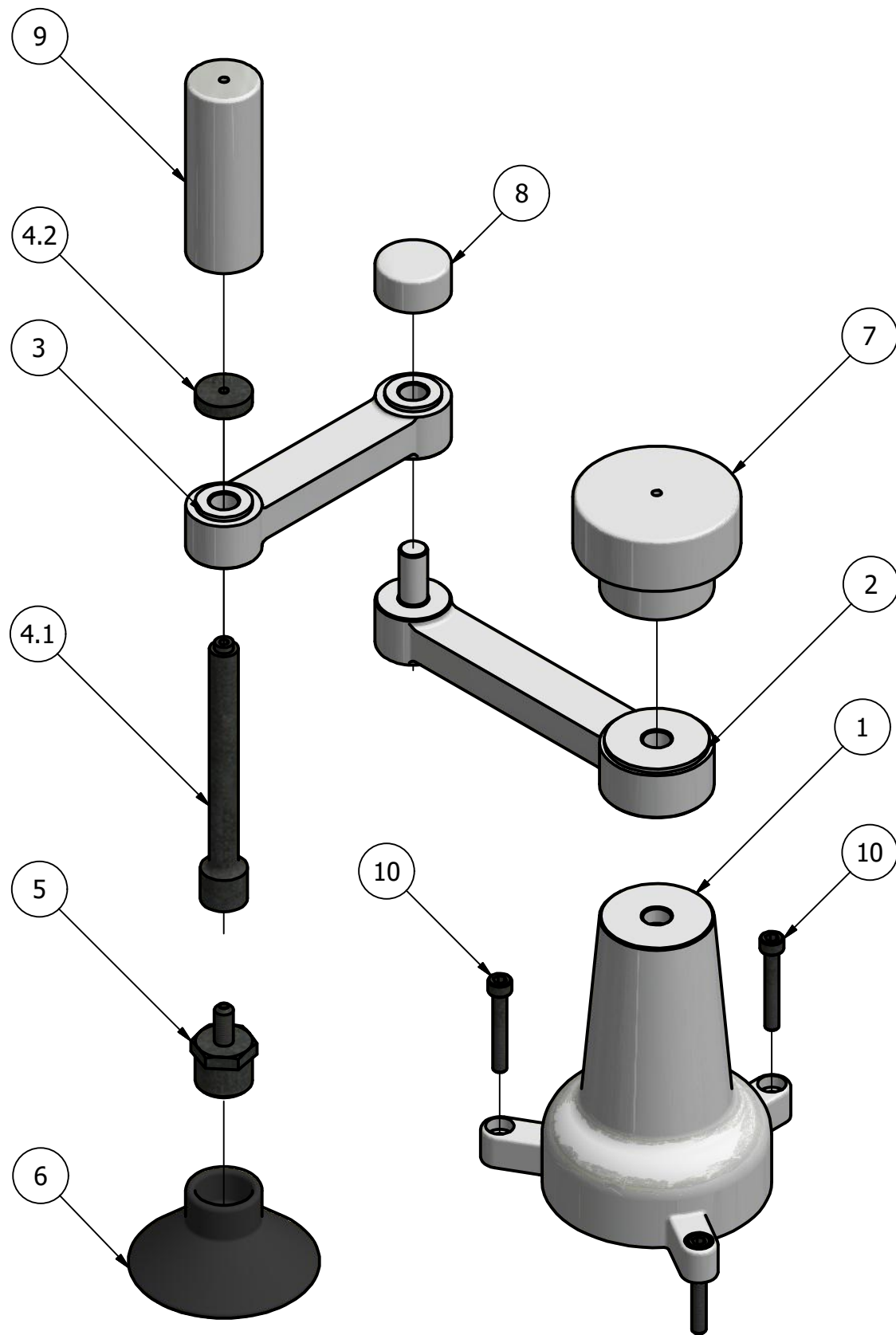
(707) 980-5920
alexjkuykendall@gmail.com

www.ddgt.net/StudentPages/akuykendall



TOLERANCES UNLESS SPECIFIED
DECIMAL INCHES:
X = ±.020
XX = ±.010
XXX = ±.005
FRACTIONAL ± 1/64"
ANGLES ± 1 DEGREE
SURFACES \checkmark

COURSE:	DDGT 241
INVENTOR DRAWING NAME:	ROBOTIC ARM
FIG #:	1058
DRAFTER:	A. KUYKENDALL
DATE:	2/21/2017
SCALE:	AS NOTED
PAGE #:	1 OF 5



ROBOTIC ARM EXPLODED ASSEMBLY
SCALE 1 / 2

PARTS LIST		
ITEM	QTY	PART NUMBER
1	1	BASE E01
2	1	ARM E01
3	1	ARM E02
4	1	SLIDING TUBE
4.1	1	SLIDING TUBE BOTTOM
4.2	1	SLIDING TUBE TOP
5	1	VACUUM CONNECTOR
6	1	VACUUM CUP
7	1	BASE CAP
8	1	ELBOW CAP
9	1	VACUUM CAP
10	3	CAP SCREW
11	1	HOSE

GENERAL NOTES:
ALL FILLETS TO BE R.06 UNLESS OTHERWISE SPECIFIED
ALL CHAMFERS TO BE .02 X 45° UNLESS OTHERWISE SPECIFIED

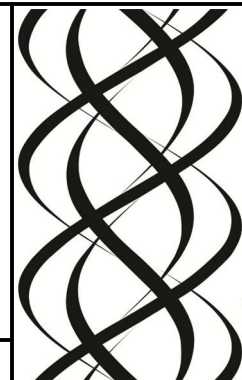
LEGEND:

- ∅ DIAMETER
- R RADIUS
- ° DEGREE
- COUNTERBORE
- ▽ DEPTH



DIGITAL DESIGN
GRAPHICS
TECHNOLOGY

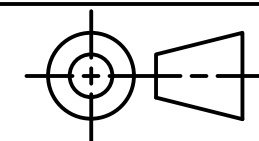
WWW.DDGT.NET



Alexzander Kuykendall
Draftsman and Graphic Designer

(707) 980-5920
alexjkuykendall@gmail.com

www.ddgt.net/StudentPages/akuykendall



TOLERANCES UNLESS SPECIFIED

DECIMAL INCHES:

X = ±.020

XX = ±.010

XXX = ±.005

FRACTIONAL ± 1/64"

ANGLES ± 1 DEGREE

SURFACES 32 ✓

COURSE: DDGT 241

INVENTOR DRAWING NAME:

ROBOTIC ARM

FIG #: 1058

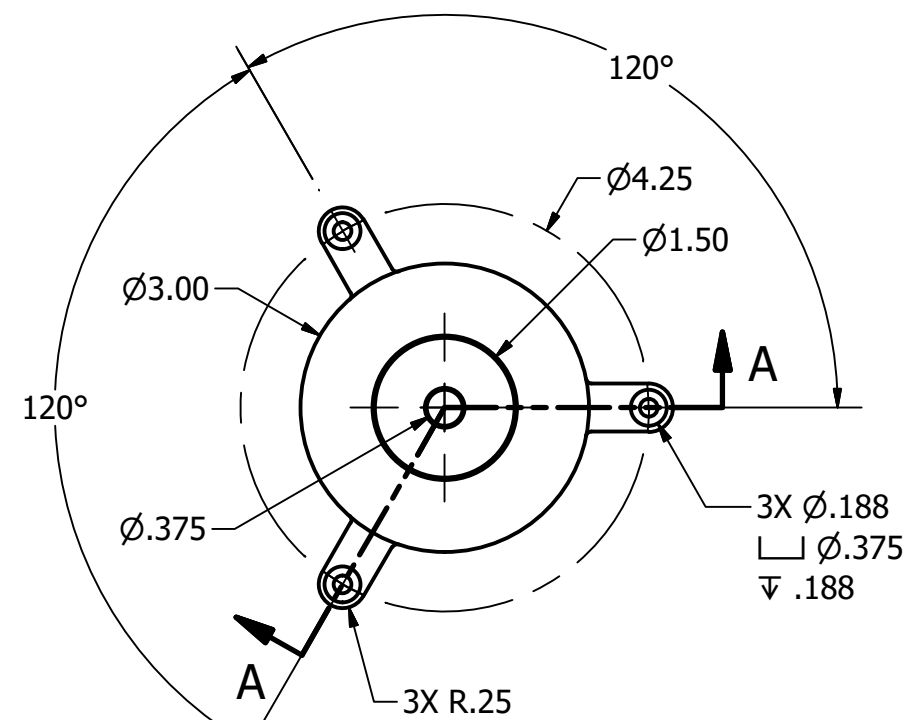
DRAFTER: A. KUYKENDALL

DATE: 2/21/2017

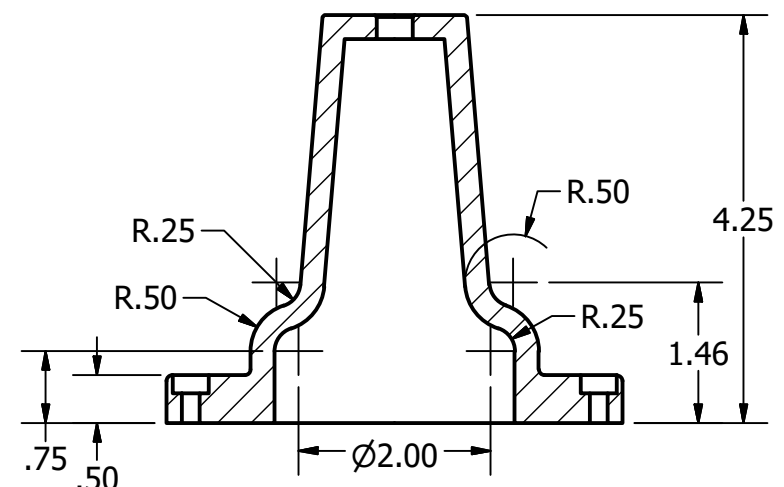
SCALE: AS NOTED

PAGE #: 2 OF 5

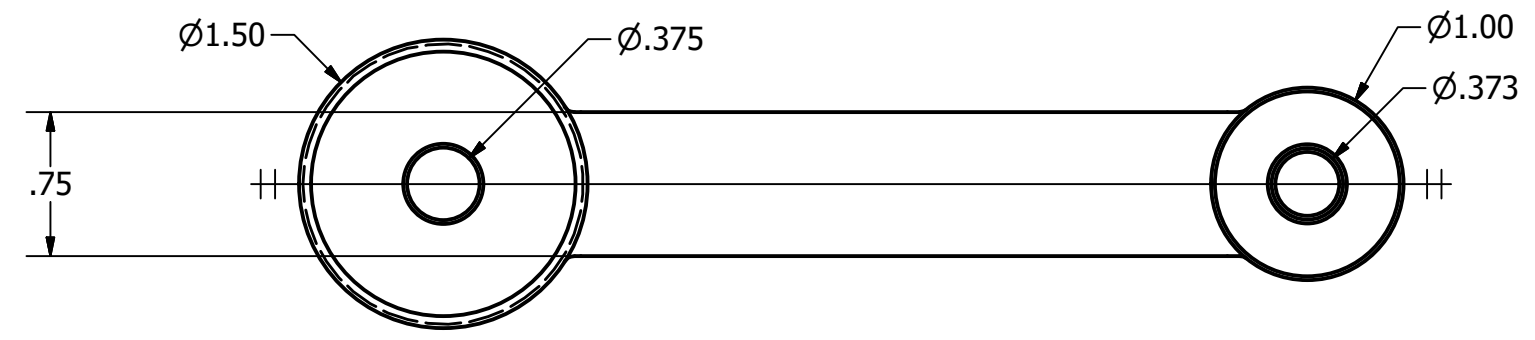
PARTS LIST		
ITEM	QTY	PART NUMBER
1	1	BASE E01
2	1	ARM E01



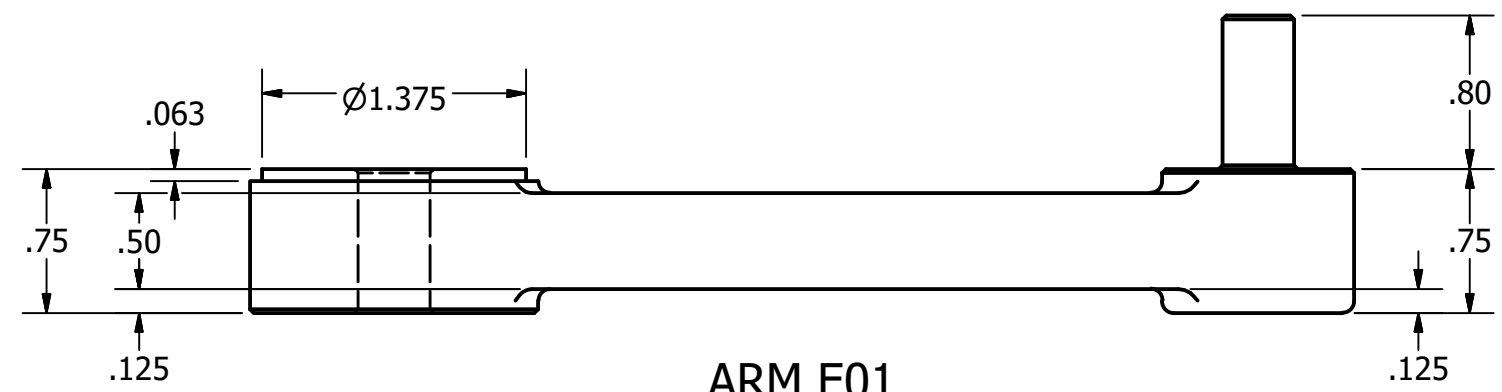
BASE E01
SCALE 1 / 2



SECTION A-A
SCALE 1 / 2



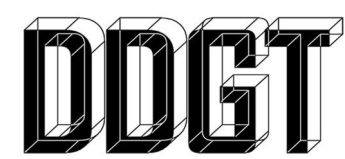
ARM E01
SCALE 1 : 1



GENERAL NOTES:
ALL FILLETS TO BE R.06 UNLESS OTHERWISE SPECIFIED
ALL CHAMFERS TO BE .02 X 45° UNLESS OTHERWISE SPECIFIED

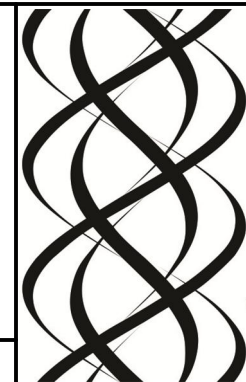
LEGEND:

- ∅ DIAMETER
- R RADIUS
- ° DEGREE
- ┌ COUNTERBORE
- ▽ DEPTH



DIGITAL DESIGN
GRAPHICS
TECHNOLOGY

WWW.DDGT.NET



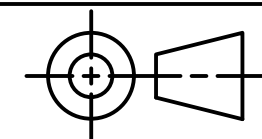
Alexzander Kuykendall

Draftsman and Graphic Designer

(707) 980-5920

alexjkuykendall@gmail.com

www.ddgt.net/StudentPages/akuykendall



TOLERANCES UNLESS SPECIFIED
DECIMAL INCHES:
X = ±.020
XX = ±.010
XXX = ±.005
FRACTIONAL ± 1/64"
ANGLES ± 1 DEGREE

SURFACES 32 ✓

COURSE: DDGT 241

INVENTOR DRAWING NAME:

ROBOTIC ARM

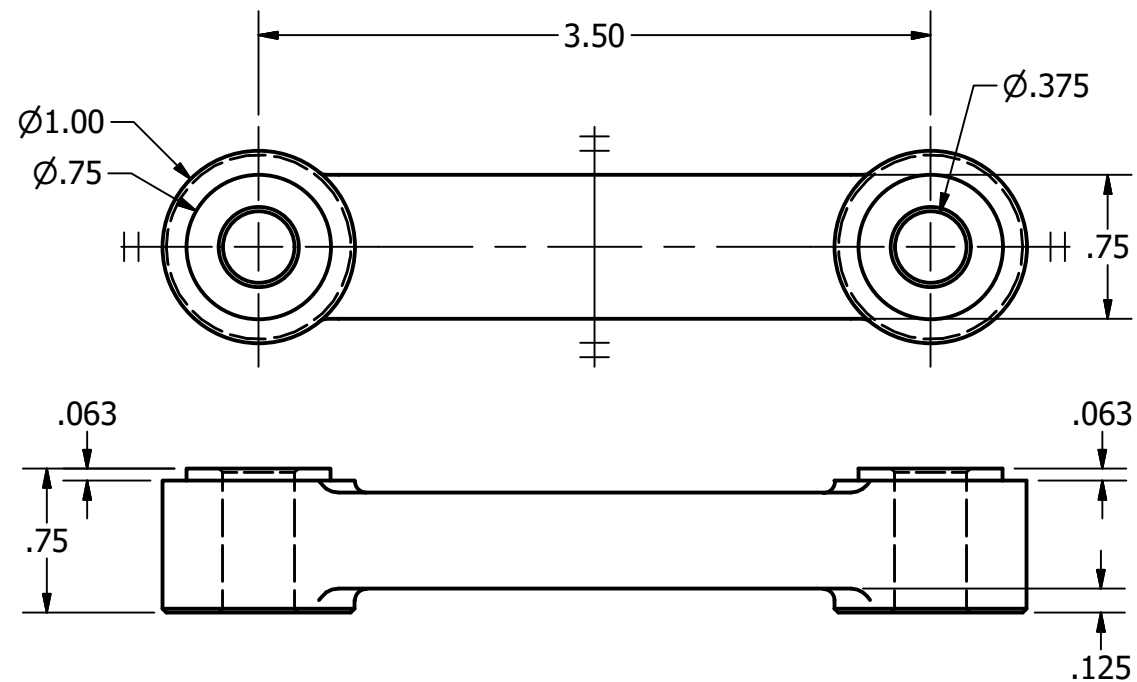
FIG #: 1058

DRAFTER: A. KUYKENDALL

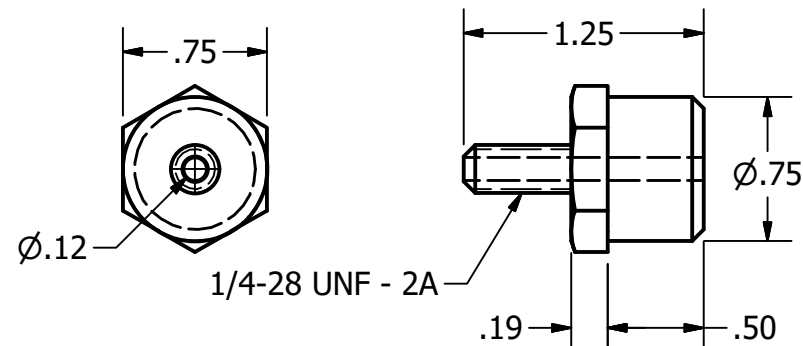
DATE: 2/21/2017

SCALE: AS NOTED

PAGE #: 3 OF 5

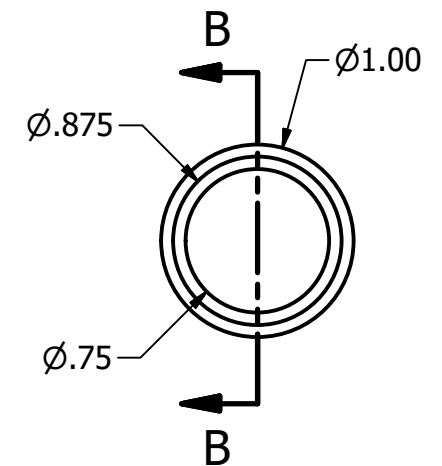


ARM E02
SCALE 1 : 1

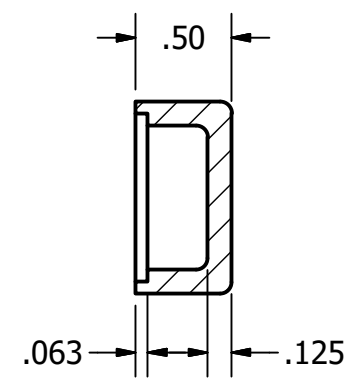


VACUUM CONNECTOR
SCALE 1 : 1

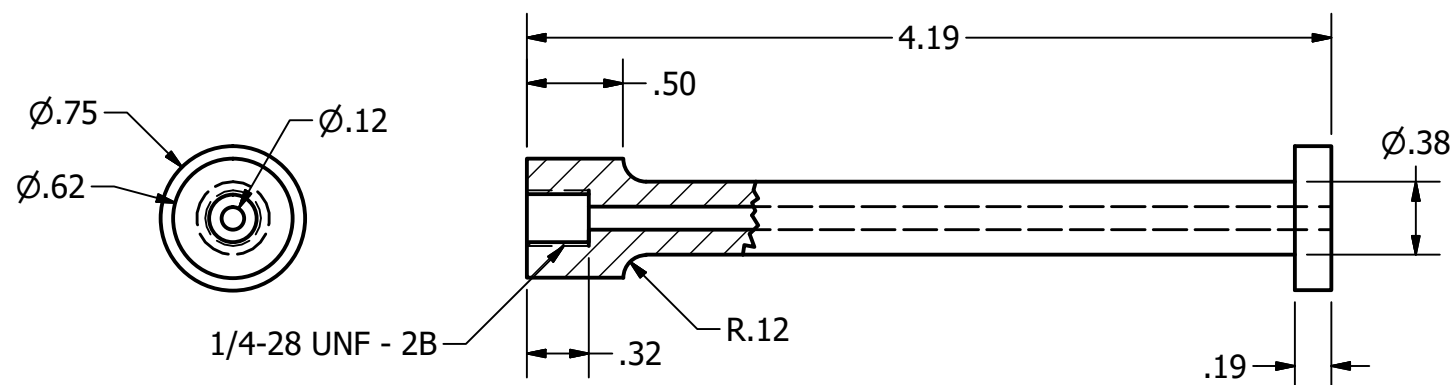
PARTS LIST		
ITEM	QTY	PART NUMBER
3	1	ARM E02
4	1	SLIDING TUBE
4.1	1	SLIDING TUBE BOTTOM
4.2	1	SLIDING TUBE TOP
5	1	VACUUM CONNECTOR
8	1	ELBOW CAP



ELBOW CAP
SCALE 1 : 1



SECTION B-B
SCALE 1 : 1



SLIDING TUBE
SCALE 1 : 1

LEGEND:

- ∅ DIAMETER
- R RADIUS
- ° DEGREE
- COUNTERBORE
- ▽ DEPTH

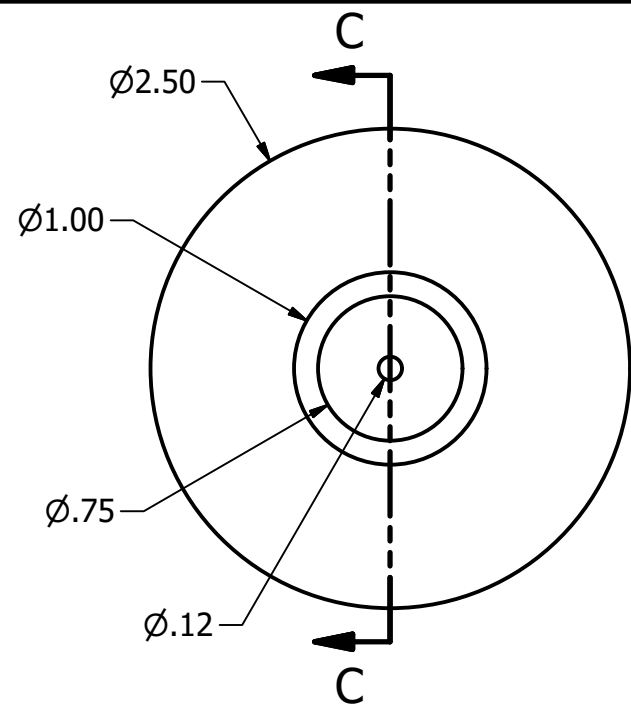
GENERAL NOTES:
ALL FILLETS TO BE R.06 UNLESS OTHERWISE SPECIFIED
ALL CHAMFERS TO BE .02 X 45° UNLESS OTHERWISE SPECIFIED

DDGT
DIGITAL DESIGN
GRAPHICS
TECHNOLOGY
WWW.DDGT.NET

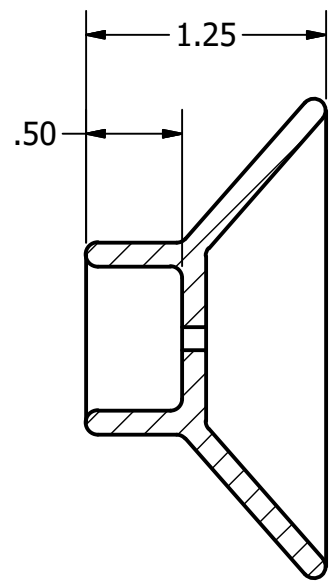
Alexzander Kuykendall
Draftsman and Graphic Designer
(707) 980-5920
alexjkuykendall@gmail.com
www.ddgt.net/StudentPages/akuykendall

TOLERANCES UNLESS SPECIFIED
DECIMAL INCHES:
X = ±.020
XX = ±.010
XXX = ±.005
FRACTIONAL ± 1/64"
ANGLES ± 1 DEGREE
SURFACES 32 ✓

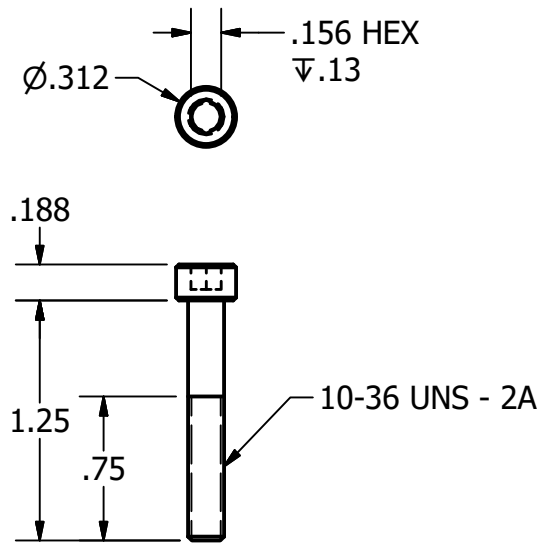
COURSE:	DDGT 241
INVENTOR DRAWING NAME:	ROBOTIC ARM
FIG #:	1058
DRAFTER:	A. KUYKENDALL
DATE:	2/21/2017
SCALE:	AS NOTED
PAGE #:	4 OF 5



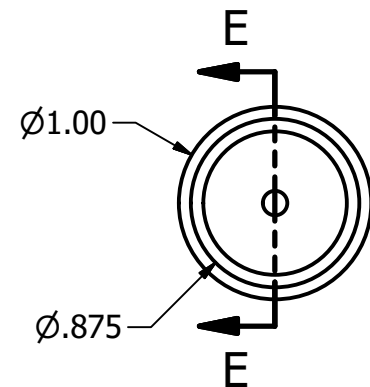
VACCUM CUP
SCALE 1 : 1



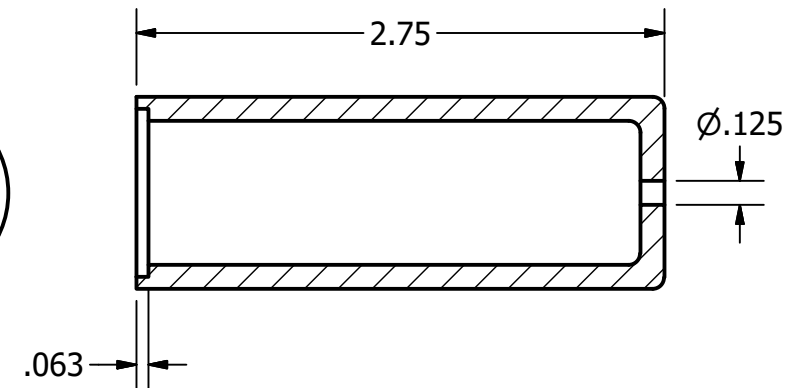
SECTION C-C
SCALE 1 : 1



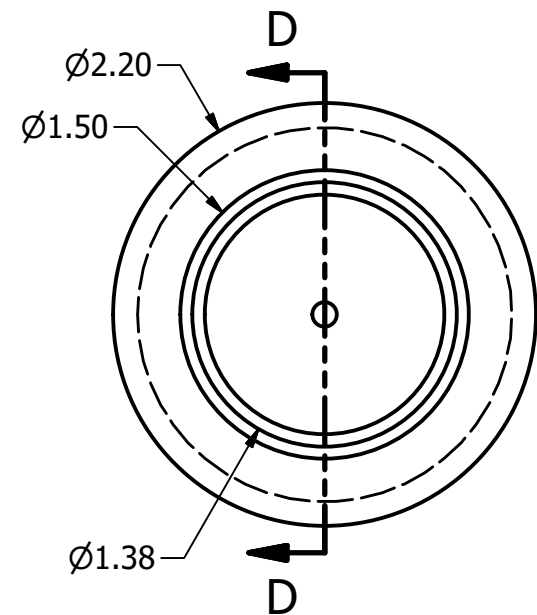
CAP SCREW
SCALE 1 : 1



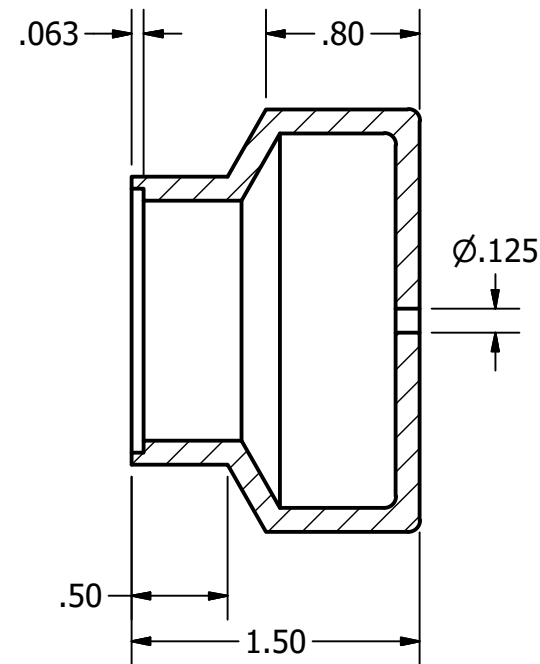
VACCUM CAP
SCALE 1 : 1



SECTION E-E
SCALE 1 : 1



BASE CAP
SCALE 1 : 1



SECTION D-D
SCALE 1 : 1

PARTS LIST		
ITEM	QTY	PART NUMBER
6	1	VACUUM CUP
7	1	BASE CAP
9	1	VACUUM CAP
10	3	CAP SCREW

GENERAL NOTES:
ALL FILLETS TO BE R.06 UNLESS OTHERWISE SPECIFIED
ALL CHAMFERS TO BE .02 X 45° UNLESS OTHERWISE SPECIFIED

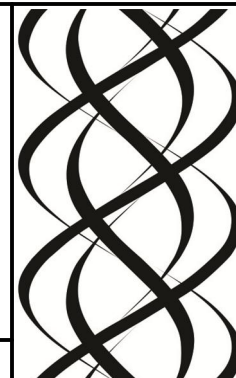
LEGEND:

- ∅ DIAMETER
- R RADIUS
- ° DEGREE
- COUNTERBORE
- ∇ DEPTH



DIGITAL DESIGN
GRAPHICS
TECHNOLOGY

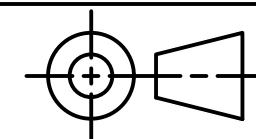
WWW.DDGT.NET



Alexzander Kuykendall
Draftsman and Graphic Designer

(707) 980-5920
alexjkuykendall@gmail.com

www.ddgt.net/StudentPages/akuykendall



TOLERANCES UNLESS SPECIFIED
DECIMAL INCHES:
X = ±.020
XX = ±.010
XXX = ±.005
FRACTIONAL ± 1/64"
ANGLES ± 1 DEGREE
SURFACES 32 ✓

COURSE: DDGT 241

INVENTOR DRAWING NAME:

ROBOTIC ARM

FIG #: 1058

DRAFTER: A. KUYKENDALL

DATE: 2/21/2017

SCALE: AS NOTED

PAGE #: 5 OF 5