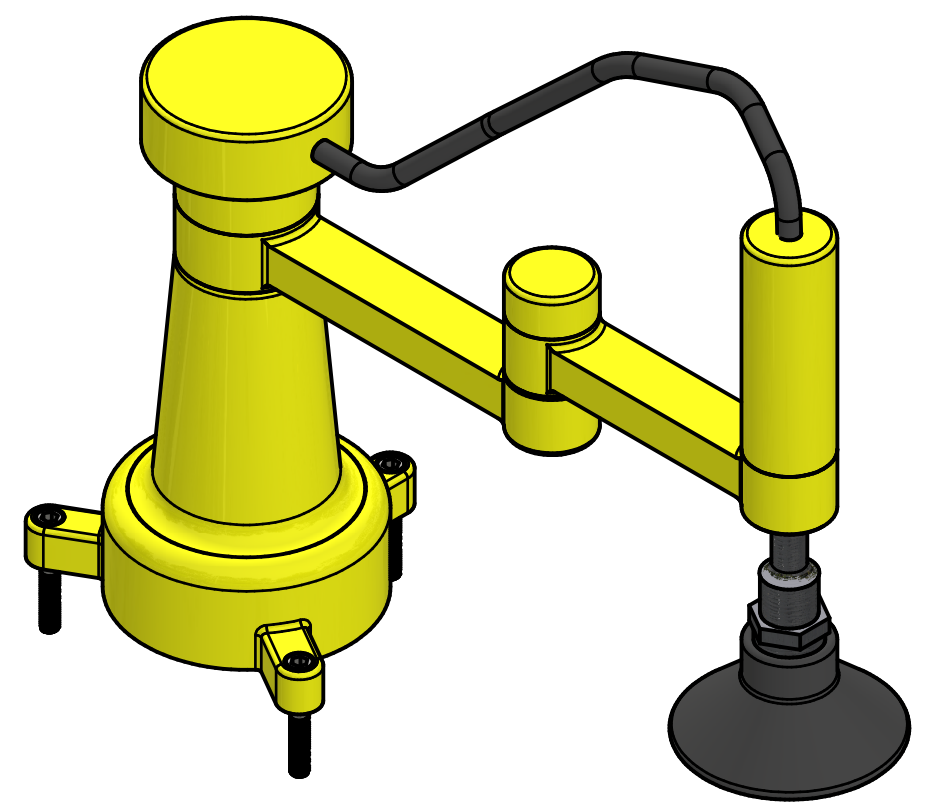


PARTS LIST				
ITEM	QTY	PART NUMBER	MATERIAL	DESCRIPTION
1	1	BASE E01	ALUMINUM	PAINT
2	1	ARM E01	ALUMINUM	PAINT
3	1	ARM E02	ALUMINUM	PAINT
4	1	SLIDING TUBE SUB-ASSEMBLY		
4.1	1	SLIDING TUBE	STEEL	
4.2	1	SLIDING TUBE END	STEEL	
5	1	VACUUM CONNECTOR	STEEL	
6	1	VACUUM CUP	RUBBER	
7	1	BASE CAP	ALUMINUM	
8	1	ELBOW CAP	ALUMINUM	
9	1	VACUUM CAP	ALUMINUM	
10	3	CAP SCREW	STEEL	10-36 UNS 1.25" LG
11	1	VACUUM LINE	RUBBER	O.D. $\varnothing$ 1.25", I.D. $\varnothing$ .825", LG 8.00"



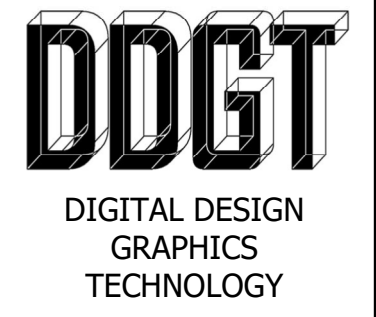
ROBOTIC ARM ASSEMBLED  
SCALE 1 / 2

**GENERAL NOTES:**

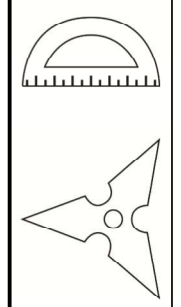
ALL FILLETS AND ROUNDS .06" UNLESS OTHERWISE STATED.  
ALL CHAMFERS .02" X 45° UNLESS OTHERWISE STATED.

**LEGEND:**

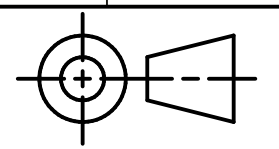
- $\varnothing$  DIAMETER
- R RADIUS
- ° DEGREES
- COUNTERBORE/  
SPOTFACE
- DEPTH



WWW.DDGT.NET



Ahmed Drafting  
Ahmed Mostafa - Drafter  
Phone: (707) 492-7406  
omarmostafa74@yahoo.com  
http://ddgt.net/StudentPages/amostafa



TOLERANCES UNLESS SPECIFIED:  
DECIMAL INCHES:  
X =  $\pm$ .020  
XX =  $\pm$ .010  
XXX =  $\pm$ .005  
FRACTIONAL  $\pm$ 1/64"  
ANGLES  $\pm$ 1 DEGREE  
SURFACES

CLASS: DDGT 241

ASSIGNMENT #: 10

INVENTOR DRAWING NAME:  
ROBOTIC ARM

FIG #: 1058

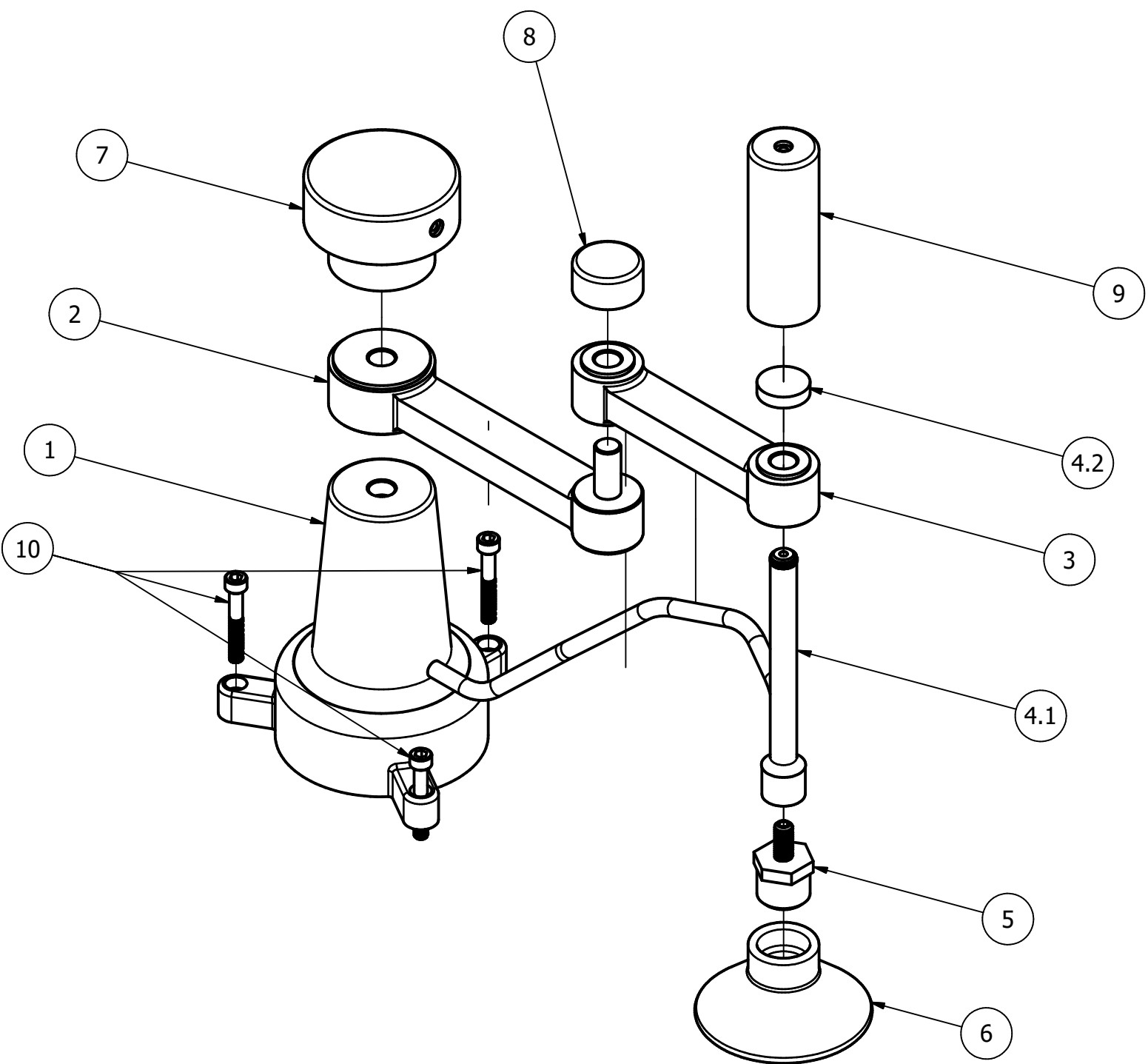
MANAGER: G. STROMMEN

DRAFTER: AHMED MOSTAFA

DATE: 2/21/2024

SCALE: AS NOTED

PAGE #: 1 OF 5

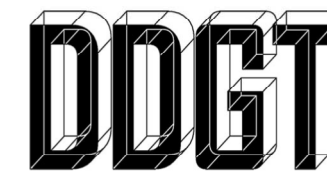


ROBOTIC ARM EXPLODED  
SCALE 1 / 2

**GENERAL NOTES:**

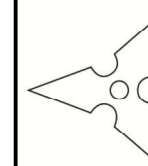
ALL FILLETS AND ROUNDS .06" UNLESS OTHERWISE STATED.  
ALL CHAMFERS .02" X 45° UNLESS OTHERWISE STATED.

PARTS LIST		
ITEM	QTY	PART NUMBER
1	1	BASE E01
2	1	ARM E01
3	1	ARM E02
4	1	SLIDING TUBE SUB-ASSEMBLY
4.1	1	SLIDING TUBE
4.2	1	SLIDING TUBE END
5	1	VACUUM CONNECTOR
6	1	VACUUM CUP
7	1	BASE CAP
8	1	ELBOW CAP
9	1	VACUUM CAP
10	3	CAP SCREW
11	1	VACUUM LINE

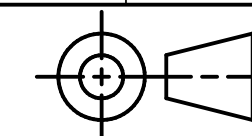


DIGITAL DESIGN  
GRAPHICS  
TECHNOLOGY

WWW.DDGT.NET



Ahmed Drafting  
Ahmed Mostafa - Drafter  
Phone: (707) 492-7406  
omarmostafa74@yahoo.com  
http://ddgt.net/StudentPages/amostafa



TOLERANCES UNLESS SPECIFIED:  
DECIMAL INCHES:  
X = ±.020  
XX = ±.010  
XXX = ±.005  
FRACTIONAL ±1/64"  
ANGLES ±1 DEGREE  
SURFACES  $\nabla$

CLASS: DDGT 241

ASSIGNMENT #: 10

INVENTOR DRAWING NAME:  
ROBOTIC ARM

FIG #: 1058

MANAGER: G. STROMMEN

DRAFTER: AHMED MOSTAFA

DATE: 2/21/2024

SCALE: AS NOTED

PAGE #: 2 OF 5

**LEGEND:**

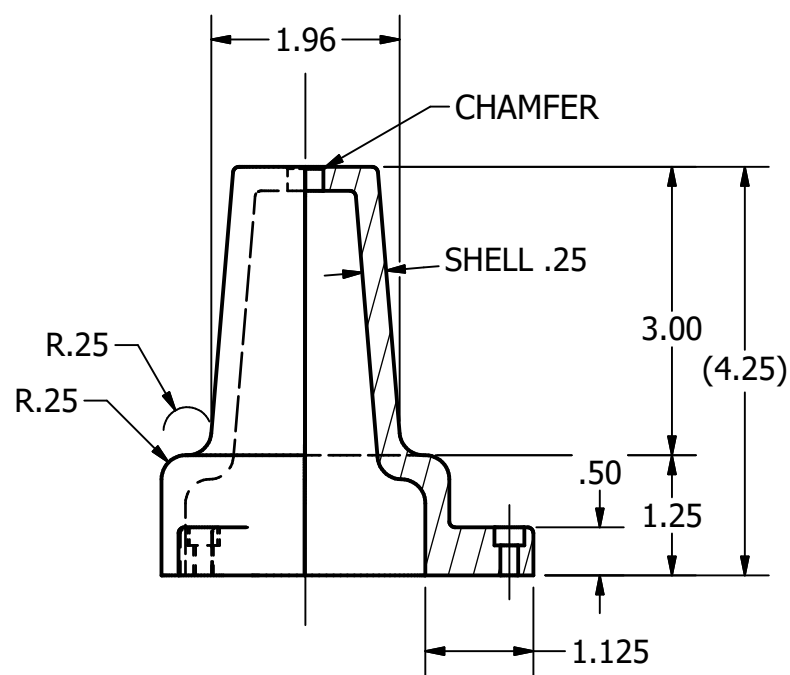
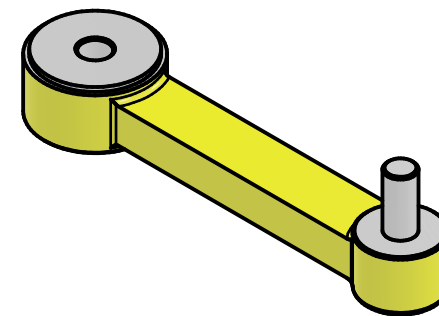
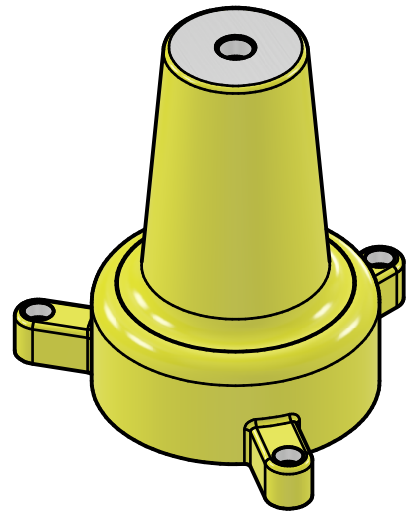
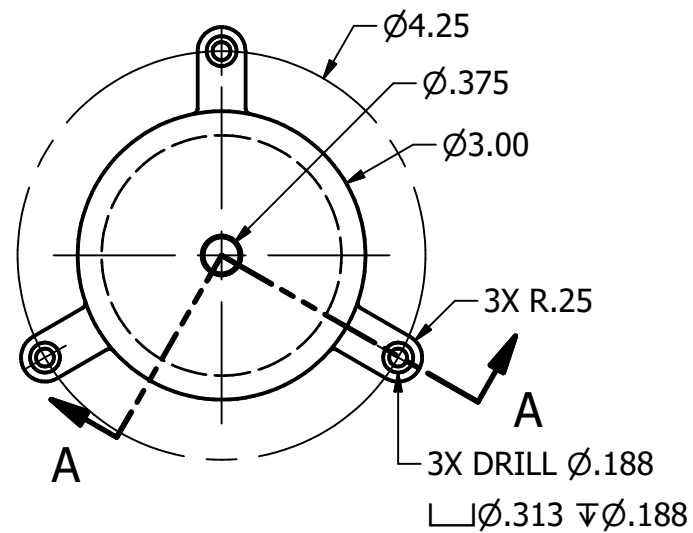
- ∅ DIAMETER
- R RADIUS
- ° DEGREES
- COUNTERBORE/  
SPOTFACE
- ∇ DEPTH

PARTS LIST		
ITEM	QTY	PART NUMBER
1	1	BASE E01
2	1	ARM E01



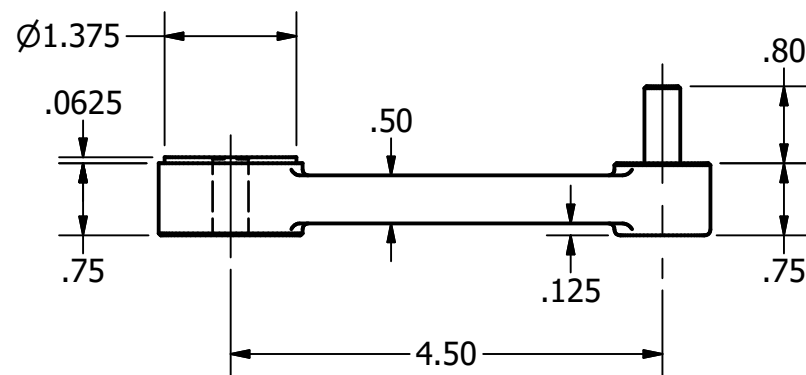
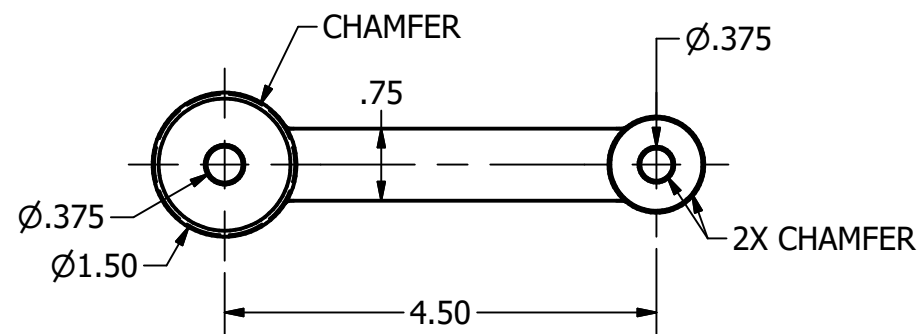
DIGITAL DESIGN  
GRAPHICS  
TECHNOLOGY

WWW.DDGT.NET

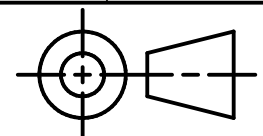
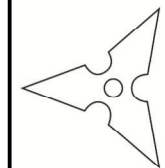
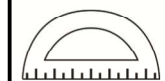


BASE E01  
SCALE 1 / 2

SECTION A-A  
SCALE 1 / 2



ARM E01  
SCALE 1 / 2



TOLERANCES UNLESS SPECIFIED:  
DECIMAL INCHES:  
X = ±.020  
XX = ±.010  
XXX = ±.005  
FRACTIONAL ±1/64"  
ANGLES ±1 DEGREE  
SURFACES 32

CLASS: DDGT 241

ASSIGNMENT #: 10

INVENTOR DRAWING NAME:  
ROBOTIC ARM

FIG #: 1058

MANAGER: G. STROMMEN

DRAFTER: AHMED MOSTAFA

DATE: 2/21/2024

SCALE: AS NOTED

PAGE #: 3 OF 5

### GENERAL NOTES:

ALL FILLETS AND ROUNDS .06" UNLESS OTHERWISE STATED.  
ALL CHAMFERS .02" X 45° UNLESS OTHERWISE STATED.

### LEGEND:

- Ø DIAMETER
- R RADIUS
- ° DEGREES
- COUNTERBORE/  
SPOTFACE
- ∇ DEPTH

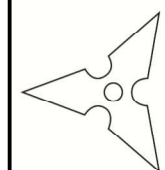
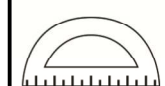
PARTS LIST

ITEM	QTY	PART NUMBER
3	1	ARM E02
4	1	SLIDING TUBE SUB-ASSEMBLY
4.1	1	SLIDING TUBE
4.2	1	SLIDING TUBE END
5	1	VACUUM CONNECTOR

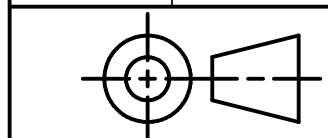


DIGITAL DESIGN  
GRAPHICS  
TECHNOLOGY

WWW.DDGT.NET



Ahmed Drafting  
Ahmed Mostafa - Drafter  
Phone: (707) 492-7406  
omarmostafa74@yahoo.com  
http://ddgt.net/StudentPages/amostafa



TOLERANCES UNLESS SPECIFIED:  
DECIMAL INCHES:  
X = ±.020  
XX = ±.010  
XXX = ±.005  
FRACTIONAL ±1/64"  
ANGLES ±1 DEGREE  
SURFACES  $\sqrt{\quad}$

CLASS: DDGT 241

ASSIGNMENT #: 10

INVENTOR DRAWING NAME:  
ROBOTIC ARM

FIG #: 1058

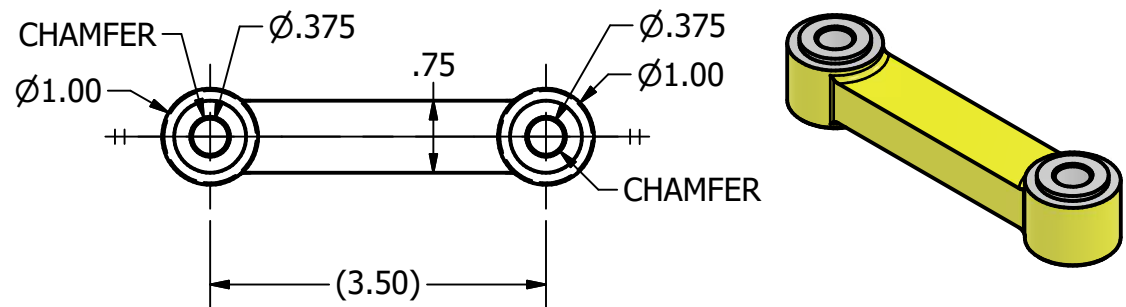
MANAGER: G. STROMMEN

DRAFTER: AHMED MOSTAFA

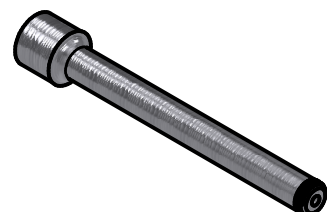
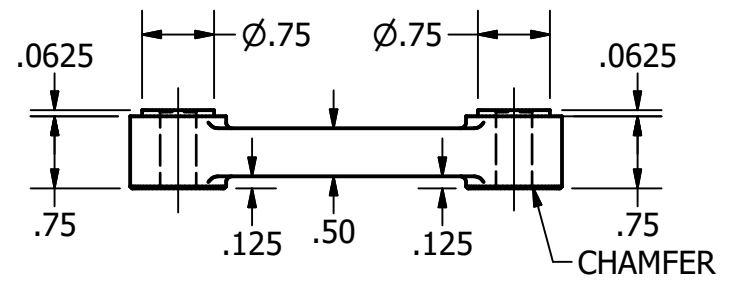
DATE: 2/21/2024

SCALE: AS NOTED

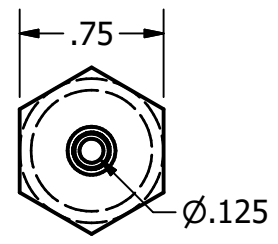
PAGE #: 4 OF 5



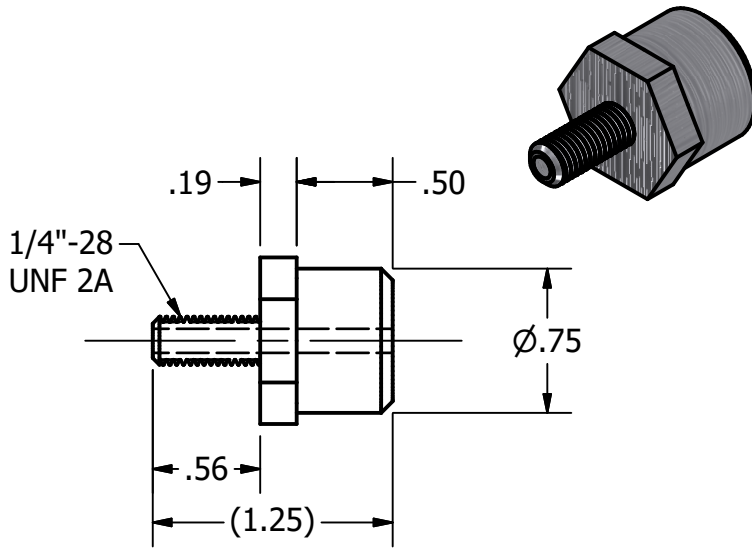
ARM E02  
SCALE 1 / 2



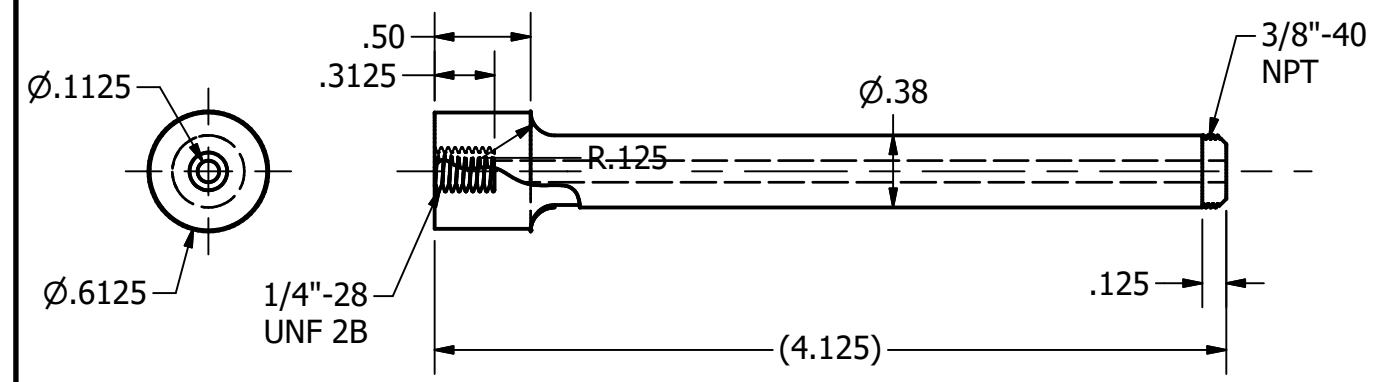
SLIDING TUBE  
SCALE 1 : 1



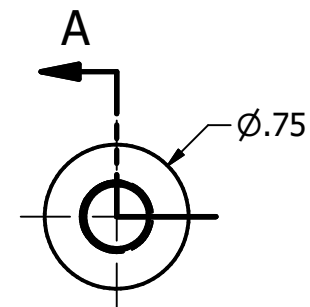
SLIDING TUBE END  
SCALE 1 : 1



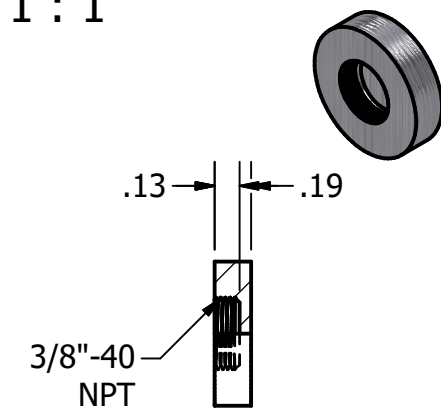
VACUUM CONNECTOR  
SCALE 1 : 1



SLIDING TUBE  
SCALE 1 : 1



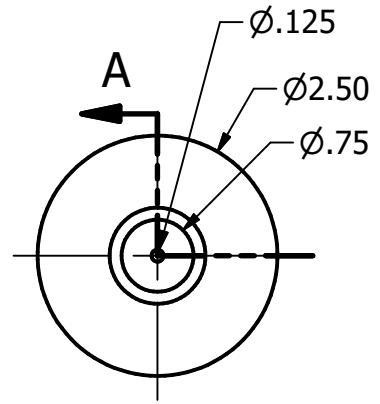
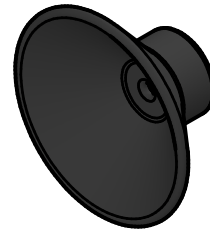
SLIDING TUBE END  
SCALE 1 : 1



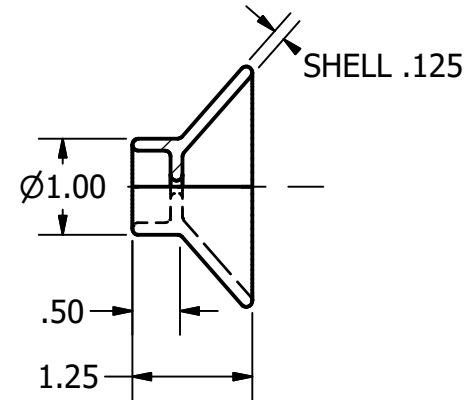
SECTION A-A  
SCALE 1 : 1

LEGEND:

- Ø DIAMETER
- R RADIUS
- ° DEGREES
- COUNTERBORE/ SPOTFACE
- √ DEPTH



VACUUM CUP  
SCALE 1 / 2

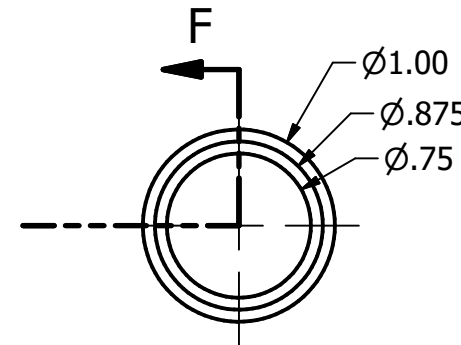
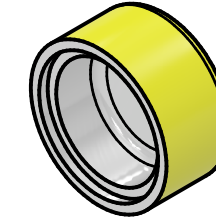


SECTION A-A  
SCALE 1 / 2

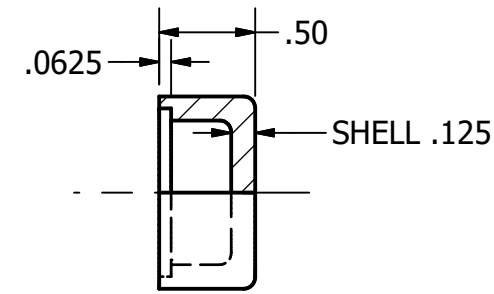
**LEGEND:**

- ∅ DIAMETER
- R RADIUS
- ° DEGREES
- COUNTERBORE/  
SPOTFACE
- ▽ DEPTH

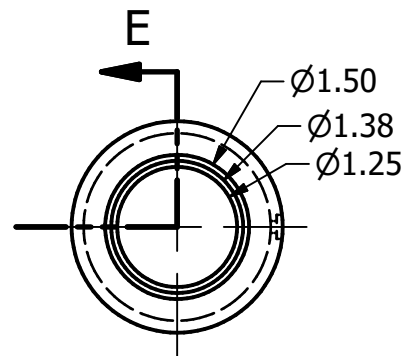
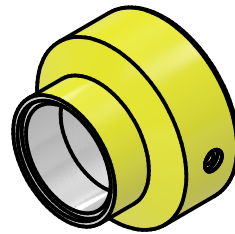
PARTS LIST		
ITEM	QTY	PART NUMBER
6	1	VACUUM CUP
7	1	BASE CAP
8	1	ELBOW CAP
9	1	VACUUM CAP



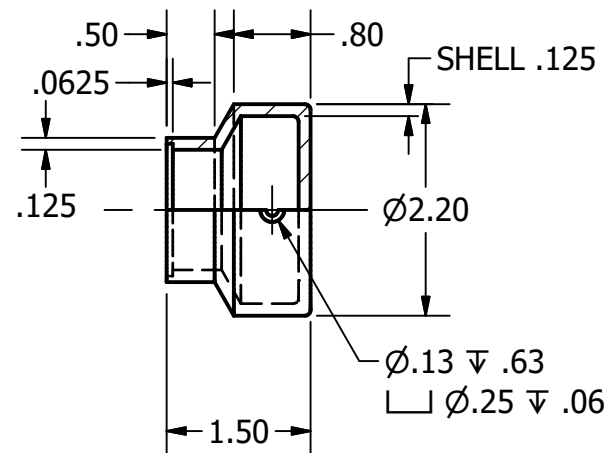
ELBOW CAP  
SCALE 1 : 1



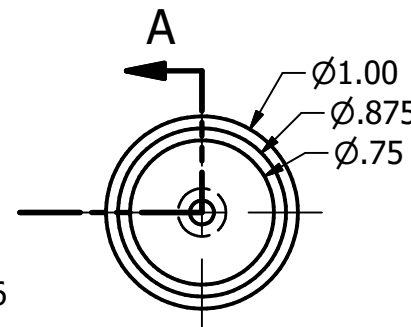
SECTION F-F  
SCALE 1 : 1



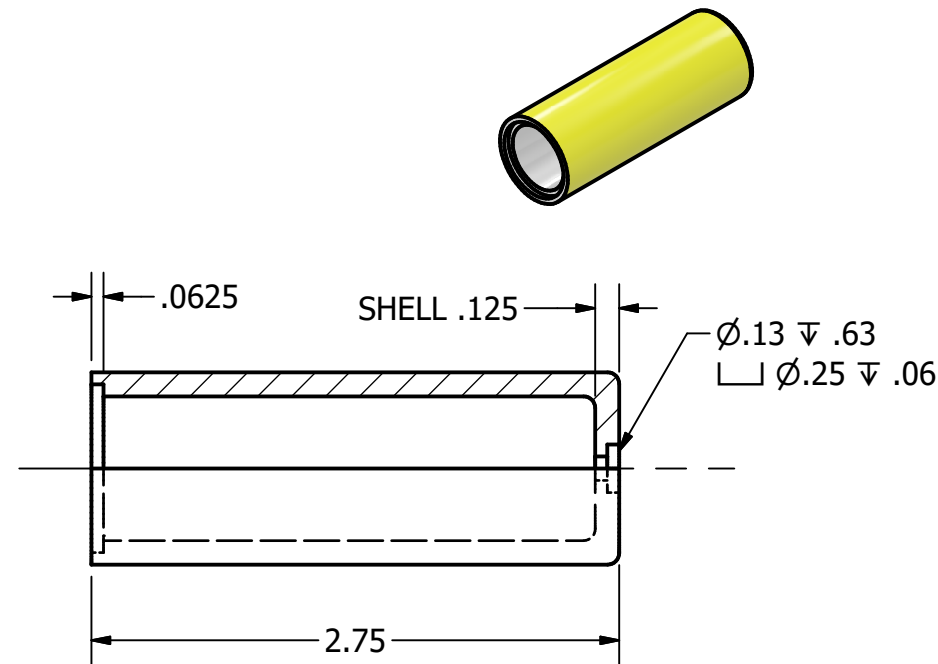
BASE CAP  
SCALE 1 / 2



SECTION E-E  
SCALE 1 / 2



VACUUM CAP  
SCALE 1 : 1



SECTION A-A  
SCALE 1 : 1

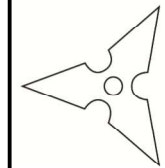
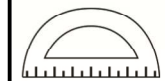
**GENERAL NOTES:**

ALL FILLETS AND ROUNDS .06" UNLESS OTHERWISE STATED.  
ALL CHAMFERS .02" X 45° UNLESS OTHERWISE STATED.

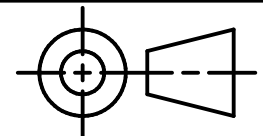


DIGITAL DESIGN  
GRAPHICS  
TECHNOLOGY

WWW.DDGT.NET



Ahmed Drafting  
Ahmed Mostafa - Drafter  
Phone: (707) 492-7406  
omarmostafa74@yahoo.com  
http://ddgt.net/StudentPages/amostafa



TOLERANCES UNLESS SPECIFIED:  
DECIMAL INCHES:  
X = ±.020  
XX = ±.010  
XXX = ±.005  
FRACTIONAL ±1/64"  
ANGLES ±1 DEGREE  
SURFACES 32

CLASS: DDGT 241

ASSIGNMENT #: 10

INVENTOR DRAWING NAME:  
ROBOTIC ARM

FIG #: 1058

MANAGER: G. STROMMEN

DRAFTER: AHMED MOSTAFA

DATE: 2/21/2024

SCALE: AS NOTED

PAGE #: 5 OF 5