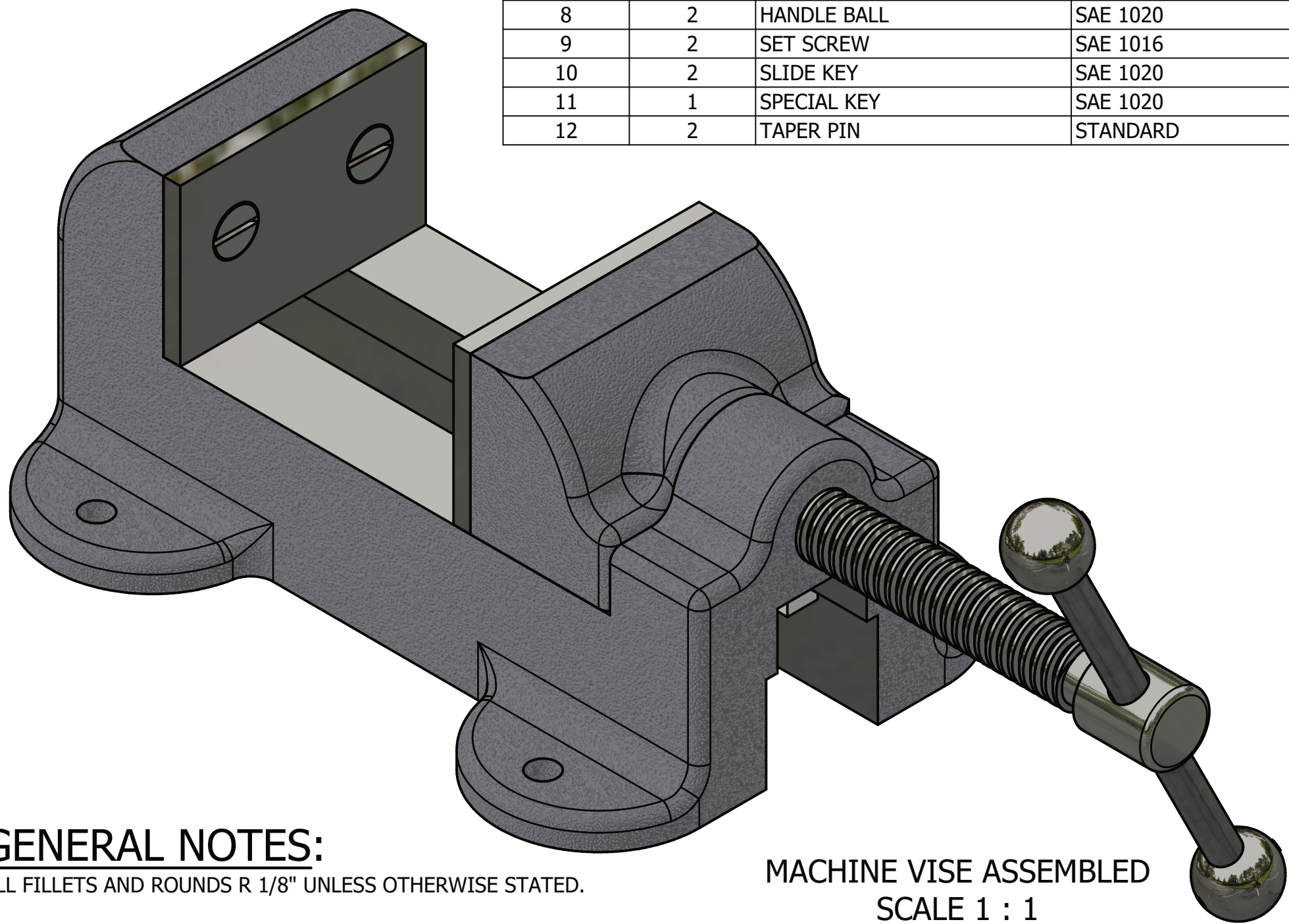


PARTS LIST				
ITEM	QTY	PART NUMBER	MATERIAL	DESCRIPTION
1	1	BASE	CAST IRON	
2	1	SLIDING JAW	CAST IRON	
3	2	JAW PLATE	SAE 3140	
4	4	STEEL SLOTTED FLAT HEAD SCREW	STANDARD	1/4"-20 3/4" LONG
5	1	HANDLE ROD	COLD-ROLLED STEEL	
6	1	WISE SCREW	SAE 3140	
7	1	COLLAR	SAE 1020	
8	2	HANDLE BALL	SAE 1020	
9	2	SET SCREW	SAE 1016	
10	2	SLIDE KEY	SAE 1020	
11	1	SPECIAL KEY	SAE 1020	
12	2	TAPER PIN	STANDARD	#000 TAPER



DIGITAL DESIGN  
GRAPHICS  
TECHNOLOGY

WWW.DDGT.NET



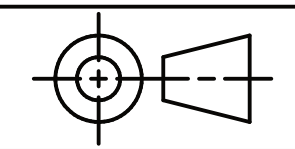
MACHINE VISE ASSEMBLED  
SCALE 1 : 1

**GENERAL NOTES:**

ALL FILLETS AND ROUNDS R 1/8" UNLESS OTHERWISE STATED.

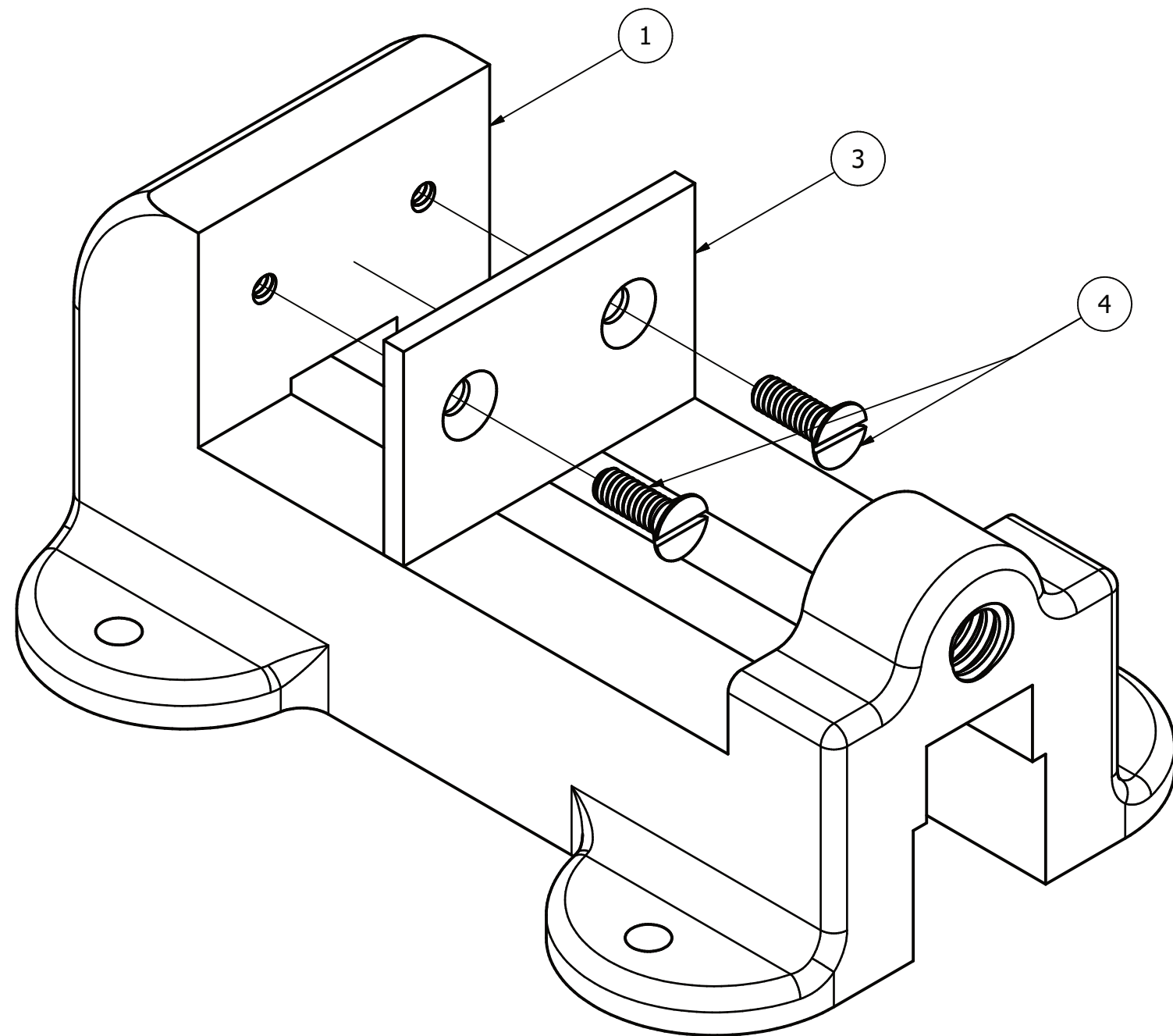
**LEGEND:**

- ∅ DIAMETER
- R RADIUS
- COUNTERBORE/  
SPOTFACE
- ∨ COUNTERSINK
- ∇ DEPTH



TOLERANCES UNLESS SPECIFIED:  
DECIMAL INCHES:  
X = ±.020  
XX = ±.010  
XXX = ±.005  
FRACTIONAL ±1/64"  
ANGLES ±1 DEGREE  
SURFACES  $\sqrt{\quad}$

CLASS:	DDGT 240
ASSIGNMENT #:	38
INVENTOR DRAWING NAME:	MACHINE VISE
FIG #:	14-71
MANAGER:	G. STROMMEN
DRAFTER:	A. MOSTAFA
DATE:	9/28/2023
SCALE:	AS NOTED
PAGE #:	1 OF 9



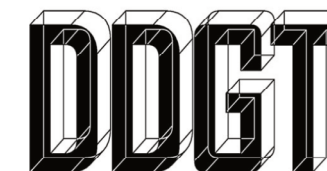
ASSEMBLY STEP 1  
SCALE 1 : 1

**GENERAL NOTES:**

ALL FILLETS AND ROUNDS R 1/8" UNLESS OTHERWISE STATED.

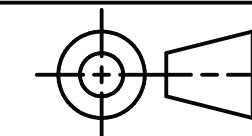
PARTS LIST

ITEM	QTY	PART NUMBER
1	1	BASE
3	2	JAW PLATE
4	4	STEEL SLOTTED FLAT HEAD SCREW



DIGITAL DESIGN  
GRAPHICS  
TECHNOLOGY

WWW.DDGT.NET



TOLERANCES UNLESS SPECIFIED:  
DECIMAL INCHES:  
X = ±.020  
XX = ±.010  
XXX = ±.005  
FRACTIONAL ±1/64"  
ANGLES ±1 DEGREE  
SURFACES  $\sqrt{\text{V}}$

**LEGEND:**

- Ø DIAMETER
- R RADIUS
- COUNTERBORE/  
SPOTFACE
- ✓ COUNTERSINK
- ∇ DEPTH

CLASS: DDGT 240

ASSIGNMENT #: 38

INVENTOR DRAWING NAME:  
MACHINE VISE

FIG #: 14-71

MANAGER: G. STROMMEN

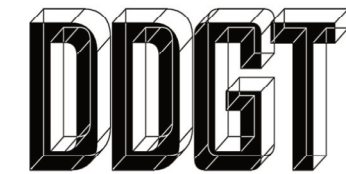
DRAFTER: A. MOSTAFA

DATE: 9/28/2023

SCALE: AS NOTED

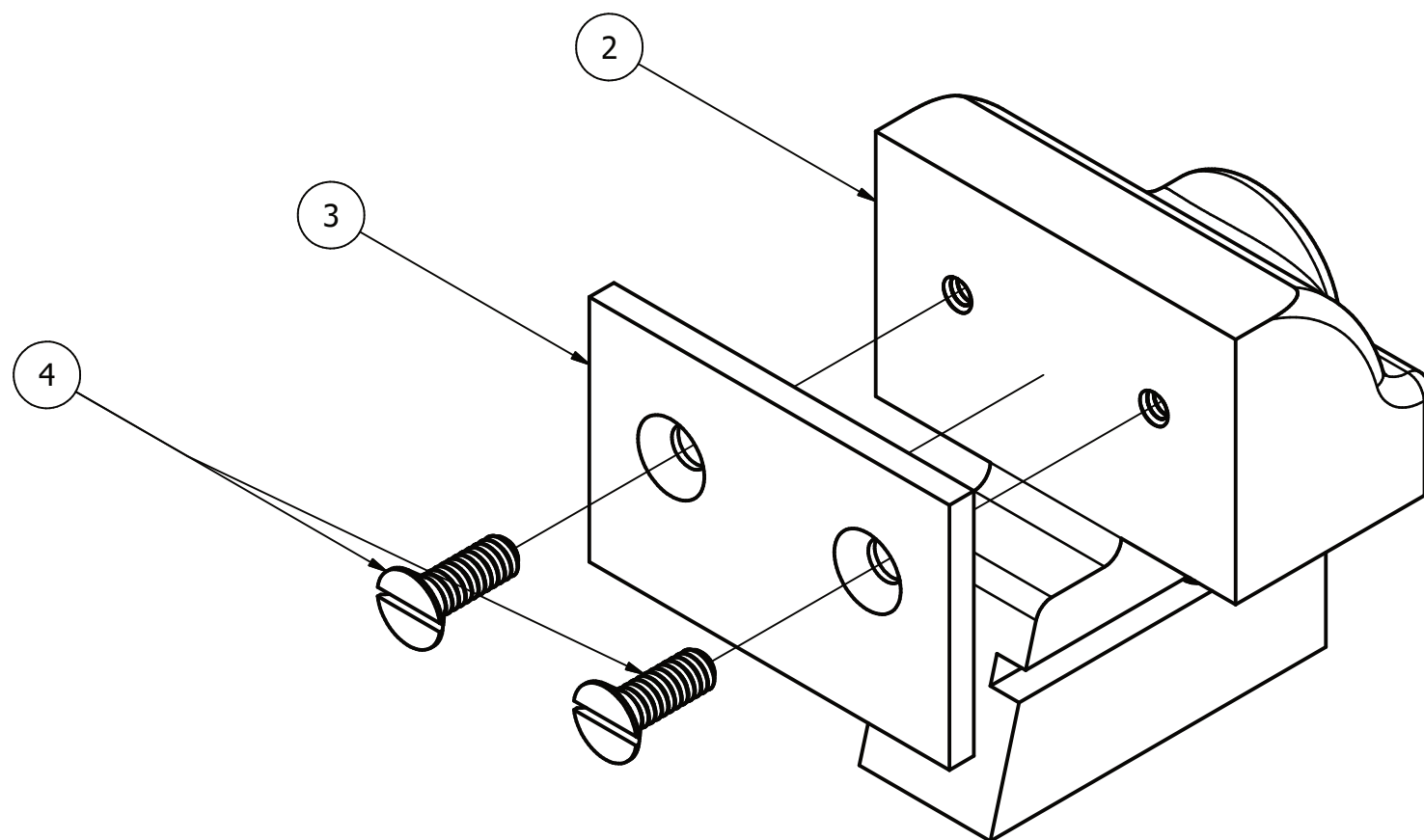
PAGE #: 2 OF 9

PARTS LIST		
ITEM	QTY	PART NUMBER
2	1	SLIDING JAW
3	2	JAW PLATE
4	4	STEEL SLOTTED FLAT HEAD SCREW

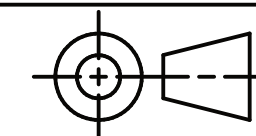


DIGITAL DESIGN  
GRAPHICS  
TECHNOLOGY

WWW.DDGT.NET



ASSEMBLY STEP 2  
SCALE 1 : 1



TOLERANCES UNLESS SPECIFIED:  
DECIMAL INCHES:  
X = ±.020  
XX = ±.010  
XXX = ±.005  
FRACTIONAL ±1/64"  
ANGLES ±1 DEGREE  
SURFACES  $\sqrt{\quad}$

CLASS: DDGT 240

ASSIGNMENT #: 38

INVENTOR DRAWING NAME:  
MACHINE VISE

FIG #: 14-71

MANAGER: G. STROMMEN

DRAFTER: A. MOSTAFA

DATE: 9/28/2023

SCALE: AS NOTED

PAGE #: 3 OF 9

**LEGEND:**

Ø DIAMETER

R RADIUS

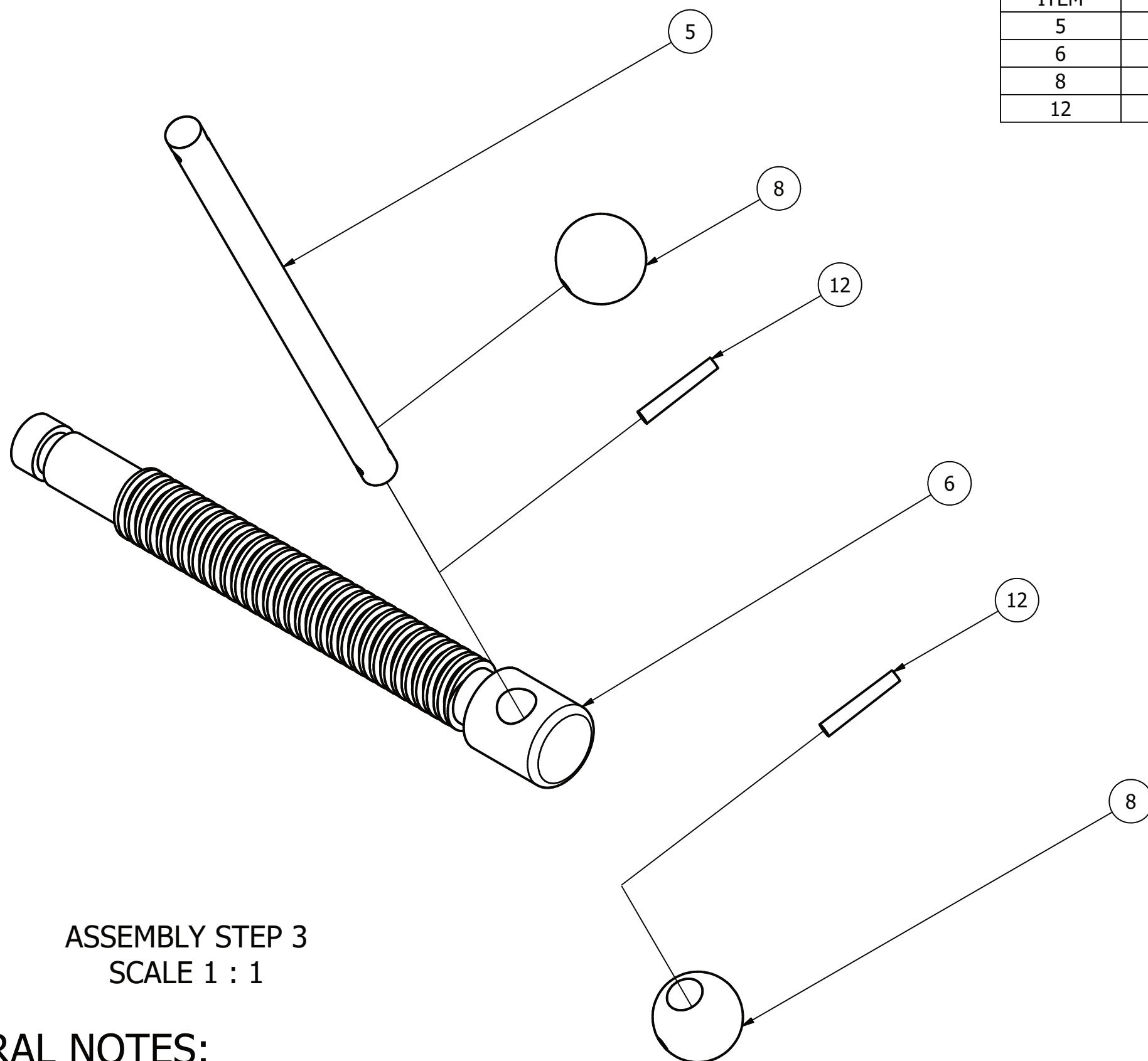
□ COUNTERBORE/  
SPOTFACE

∨ COUNTERSINK

∇ DEPTH

**GENERAL NOTES:**

ALL FILLETS AND ROUNDS R 1/8" UNLESS OTHERWISE STATED.

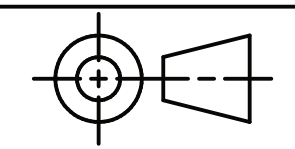


PARTS LIST		
ITEM	QTY	PART NUMBER
5	1	HANDLE ROD
6	1	WISE SCREW
8	2	HANDLE BALL
12	2	TAPER PIN



DIGITAL DESIGN  
GRAPHICS  
TECHNOLOGY

WWW.DDGT.NET



TOLERANCES UNLESS SPECIFIED:  
DECIMAL INCHES:  
X = ±.020  
XX = ±.010  
XXX = ±.005  
FRACTIONAL ±1/64"  
ANGLES ±1 DEGREE  
SURFACES  $\sqrt{\quad}$

CLASS: DDGT 240

ASSIGNMENT #: 38

INVENTOR DRAWING NAME:  
MACHINE VISE

FIG #: 14-71

MANAGER: G. STROMMEN

DRAFTER: A. MOSTAFA

DATE: 9/28/2023

SCALE: AS NOTED

PAGE #: 4 OF 9

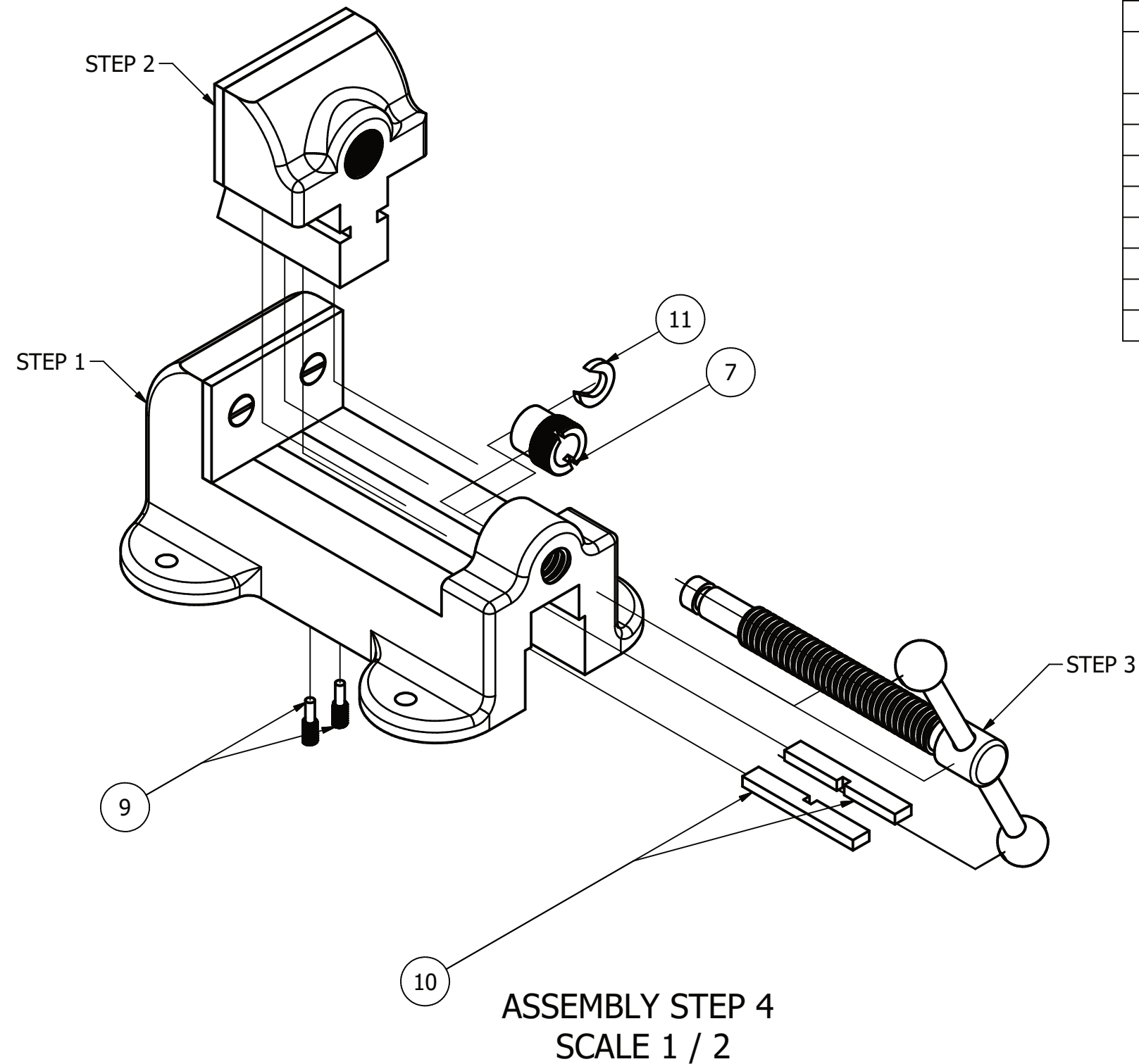
ASSEMBLY STEP 3  
SCALE 1 : 1

**GENERAL NOTES:**

ALL FILLETS AND ROUNDS R 1/8" UNLESS OTHERWISE STATED.

**LEGEND:**

- ∅ DIAMETER
- R RADIUS
- COUNTERBORE/  
SPOTFACE
- ∨ COUNTERSINK
- ∇ DEPTH



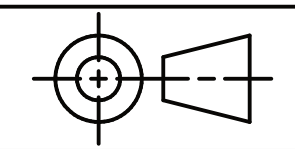
ASSEMBLY STEP 4  
SCALE 1 / 2

PARTS LIST		
ITEM	QTY	PART NUMBER
1	1	BASE
2	1	SLIDING JAW
3	2	JAW PLATE
4	4	STEEL SLOTTED FLAT HEAD SCREW
5	1	HANDLE ROD
6	1	WISE SCREW
7	1	COLLAR
8	2	HANDLE BALL
9	2	SET SCREW
10	2	SLIDE KEY
11	1	SPECIAL KEY
12	2	TAPER PIN



DIGITAL DESIGN  
GRAPHICS  
TECHNOLOGY

WWW.DDGT.NET



TOLERANCES UNLESS SPECIFIED:  
DECIMAL INCHES:  
X = ±.020  
XX = ±.010  
XXX = ±.005  
FRACTIONAL ±1/64"  
ANGLES ±1 DEGREE  
SURFACES  $\sqrt{\text{V}}$

CLASS: DDGT 240

ASSIGNMENT #: 38

INVENTOR DRAWING NAME:  
MACHINE VISE

FIG #: 14-71

MANAGER: G. STROMMEN

DRAFTER: A. MOSTAFA

DATE: 9/28/2023

SCALE: AS NOTED

PAGE #: 5 OF 9

**LEGEND:**

- ∅ DIAMETER
- R RADIUS
- COUNTERBORE/  
SPOTFACE
- ∇ COUNTERSINK
- ∇ DEPTH

**GENERAL NOTES:**

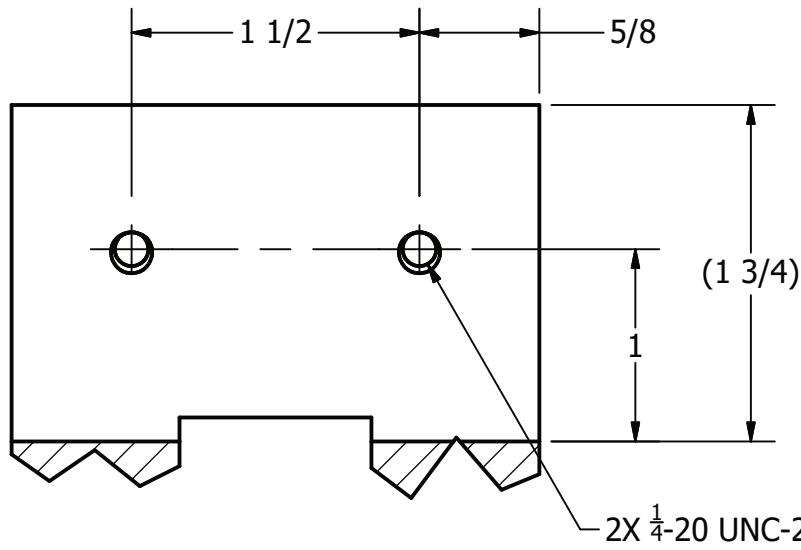
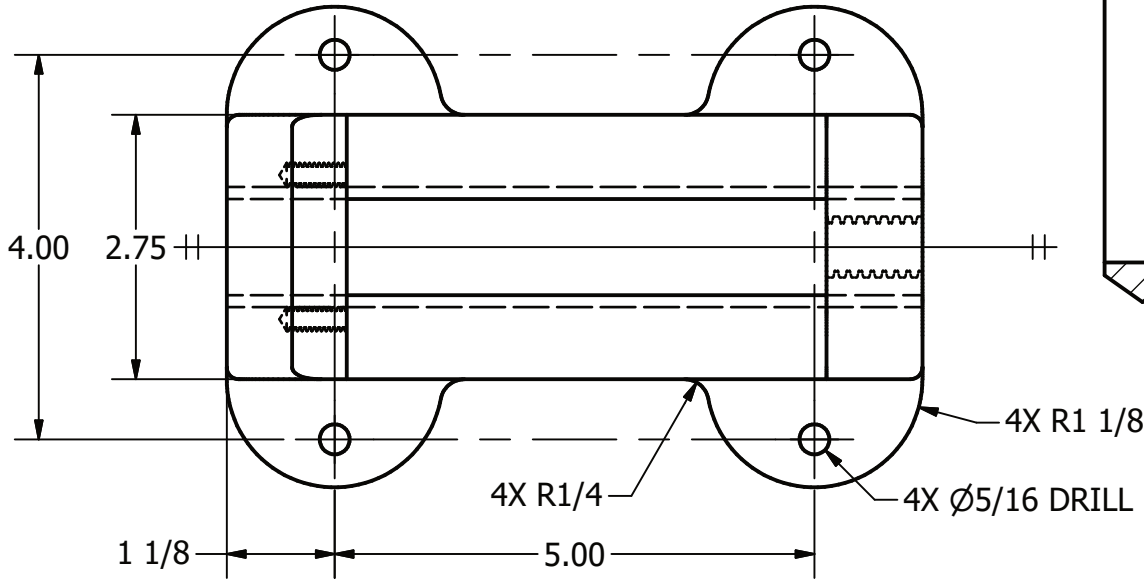
ALL FILLETS AND ROUNDS R 1/8" UNLESS OTHERWISE STATED.

PARTS LIST		
ITEM	QTY	PART NUMBER
1	1	BASE

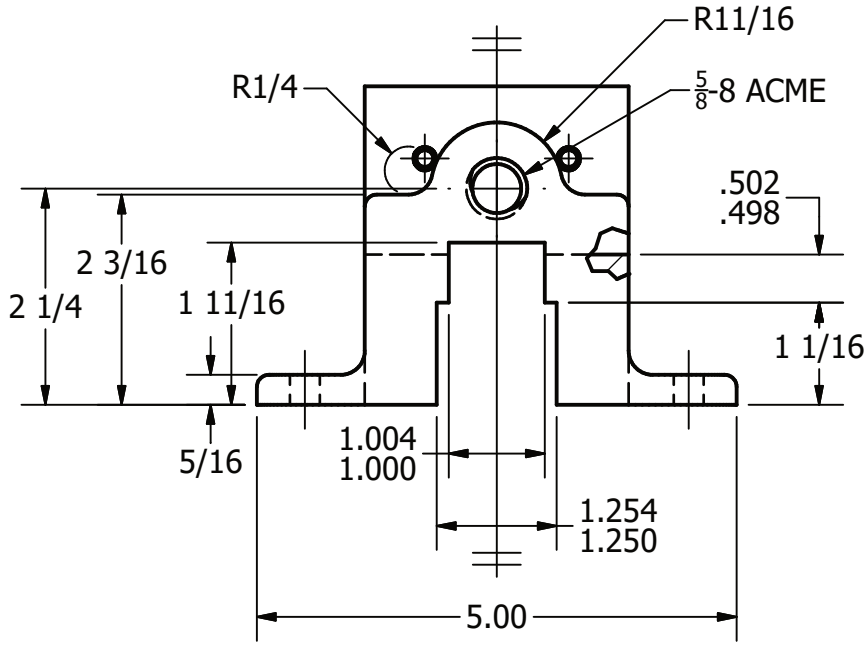
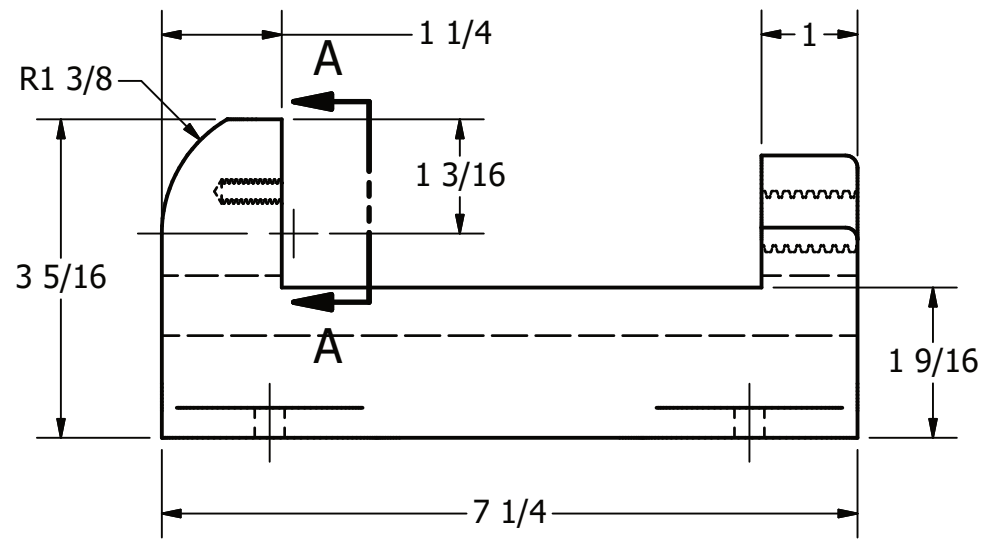
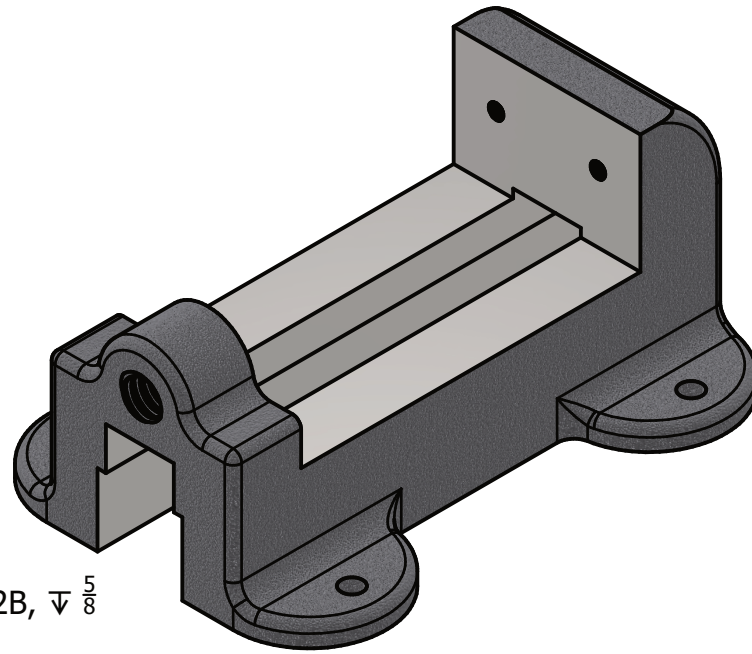


DIGITAL DESIGN  
GRAPHICS  
TECHNOLOGY

WWW.DDGT.NET



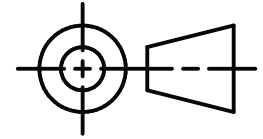
JAW FACE VIEW A-A  
SCALE 1 : 1



BASE  
SCALE 1 / 2

**LEGEND:**

- Ø DIAMETER
- R RADIUS
- COUNTERBORE/  
SPOTFACE
- ∨ COUNTERSINK
- ∇ DEPTH



TOLERANCES UNLESS SPECIFIED:  
DECIMAL INCHES:  
X = ±.020  
XX = ±.010  
XXX = ±.005  
FRACTIONAL ±1/64"  
ANGLES ±1 DEGREE  
SURFACES 32

**GENERAL NOTES:**  
ALL FILLETS AND ROUNDS R 1/8" UNLESS OTHERWISE STATED.

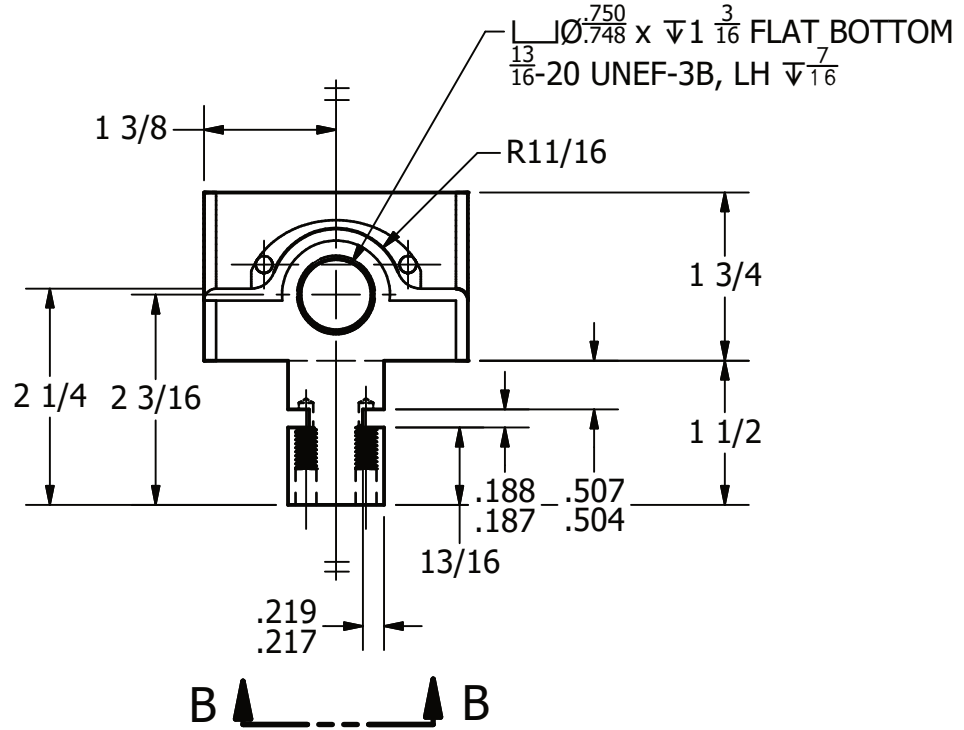
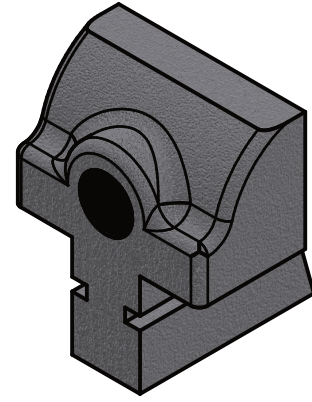
CLASS:	DDGT 240
ASSIGNMENT #:	38
INVENTOR DRAWING NAME:	MACHINE VISE
FIG #:	14-71
MANAGER:	G. STROMMEN
DRAFTER:	A. MOSTAFA
DATE:	9/28/2023
SCALE:	AS NOTED
PAGE #:	6 OF 9

PARTS LIST		
ITEM	QTY	PART NUMBER
2	1	SLIDING JAW

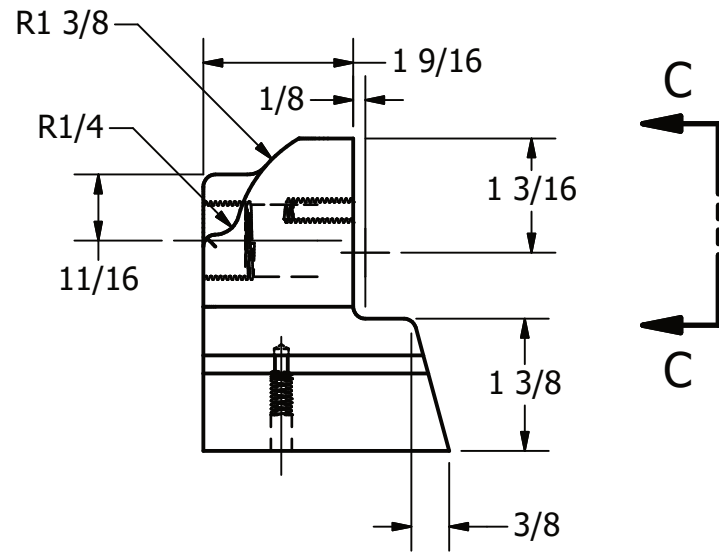


DIGITAL DESIGN  
GRAPHICS  
TECHNOLOGY

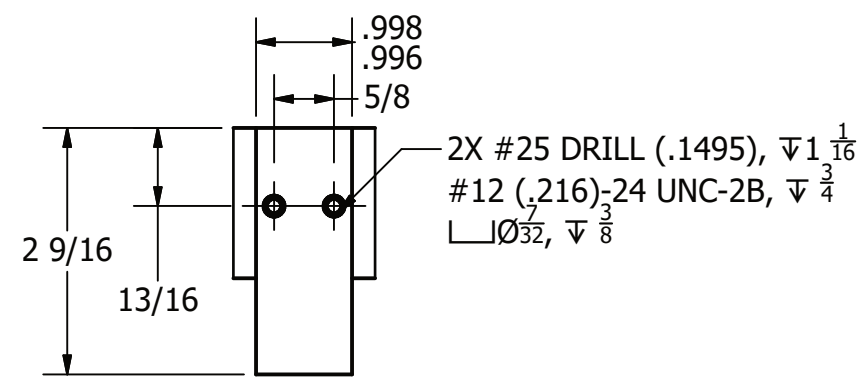
WWW.DDGT.NET



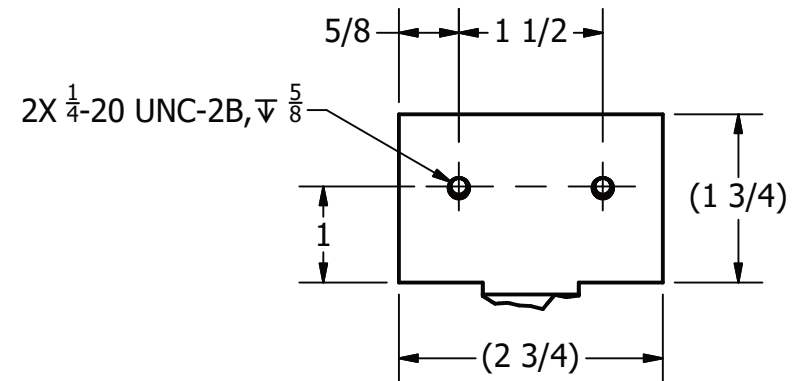
VIEW B-B  
SCALE 1 / 2



SLIDING JAW  
SCALE 1 / 2



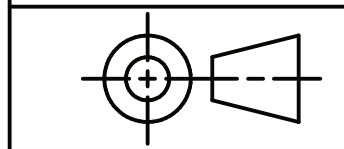
VIEW B-B  
SCALE 1 / 2



JAW FACE VIEW C-C  
SCALE 1 / 2

**LEGEND:**

- Ø DIAMETER
- R RADIUS
- COUNTERBORE/  
SPOTFACE
- ∨ COUNTERSINK
- ∇ DEPTH



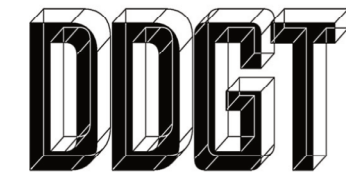
TOLERANCES UNLESS SPECIFIED:  
DECIMAL INCHES:  
X = ±.020  
XX = ±.010  
XXX = ±.005  
FRACTIONAL ±1/64"  
ANGLES ±1 DEGREE  
SURFACES 32

CLASS:	DDGT 240
ASSIGNMENT #:	38
INVENTOR DRAWING NAME:	MACHINE VISE
FIG #:	14-71
MANAGER:	G. STROMMEN
DRAFTER:	A. MOSTAFA
DATE:	9/28/2023
SCALE:	AS NOTED
PAGE #:	7 OF 9

**GENERAL NOTES:**

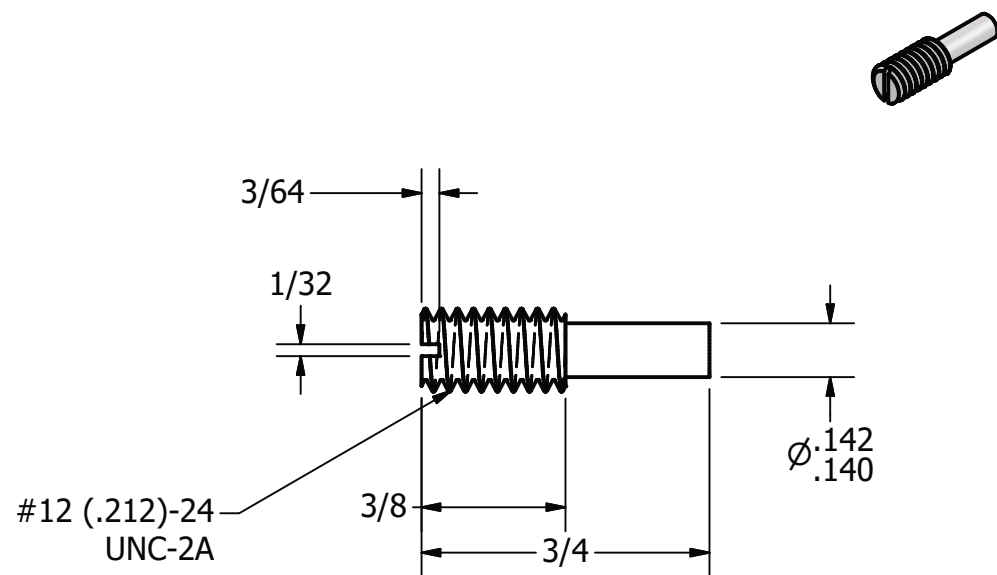
ALL FILLETS AND ROUNDS R 1/8" UNLESS OTHERWISE STATED.

PARTS LIST		
ITEM	QTY	PART NUMBER
6	1	WISE SCREW
9	2	SET SCREW
10	2	SLIDE KEY

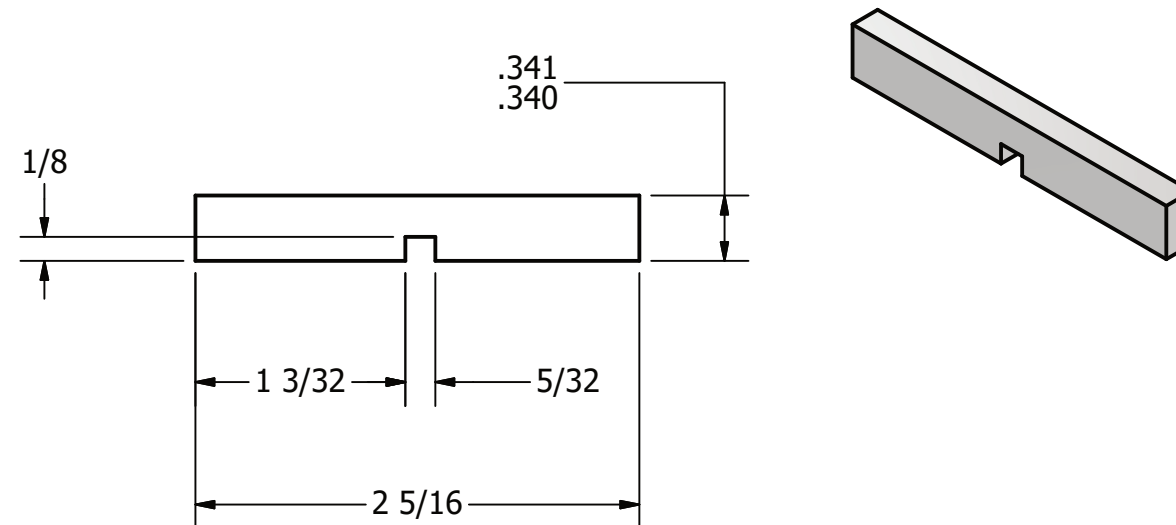


DIGITAL DESIGN  
GRAPHICS  
TECHNOLOGY

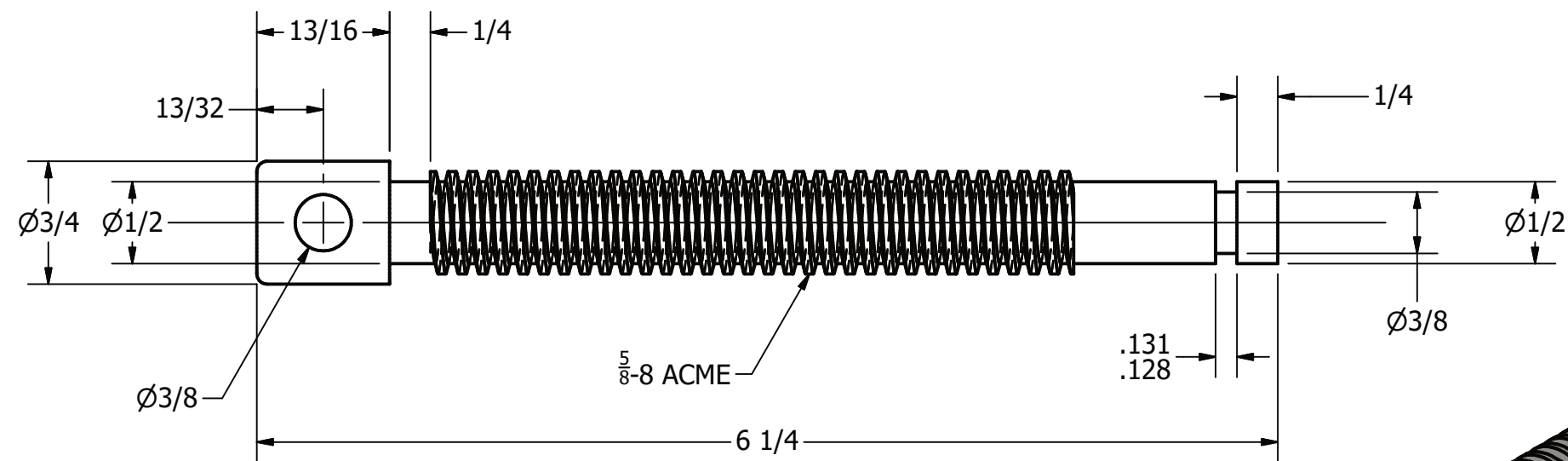
WWW.DDGT.NET



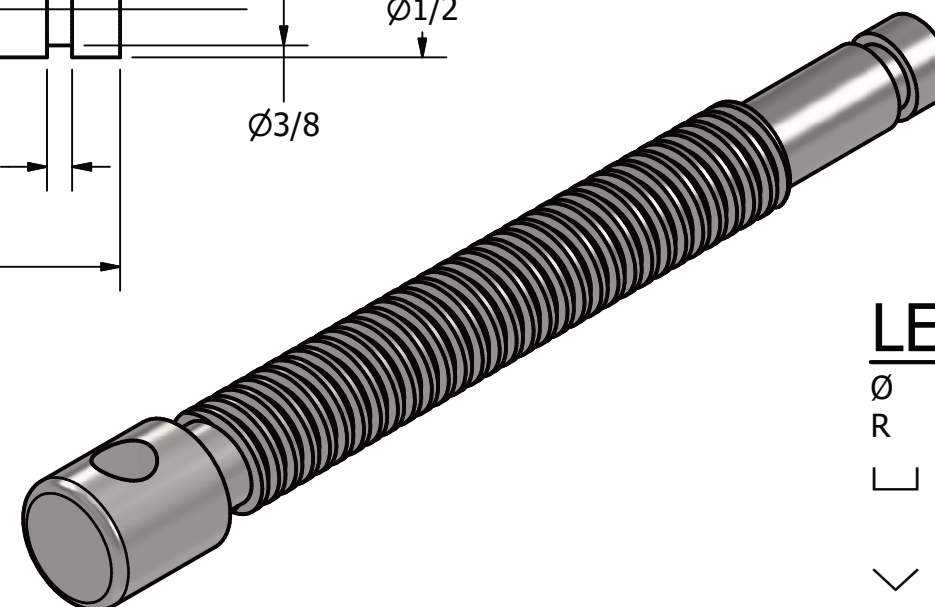
SET SCREW  
SCALE 2 : 1



SLIDE KEY  
SCALE 1 : 1



WISE SCREW  
SCALE 1 : 1

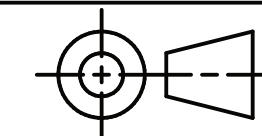


**LEGEND:**

- ∅ DIAMETER
- R RADIUS
- COUNTERBORE/  
SPOTFACE
- ∨ COUNTERSINK
- ∇ DEPTH

**GENERAL NOTES:**

ALL FILLETS AND ROUNDS R 1/8" UNLESS OTHERWISE STATED.



TOLERANCES UNLESS SPECIFIED:  
DECIMAL INCHES:  
X = ±.020  
XX = ±.010  
XXX = ±.005  
FRACTIONAL ±1/64"  
ANGLES ±1 DEGREE  
SURFACES  $\sqrt{\quad}$

CLASS: DDGT 240

ASSIGNMENT #: 38

INVENTOR DRAWING NAME:  
MACHINE VISE

FIG #: 14-71

MANAGER: G. STROMMEN

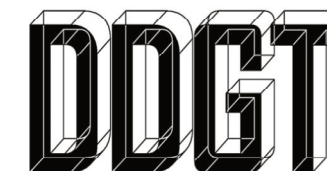
DRAFTER: A. MOSTAFA

DATE: 9/28/2023

SCALE: AS NOTED

PAGE #: 8 OF 9

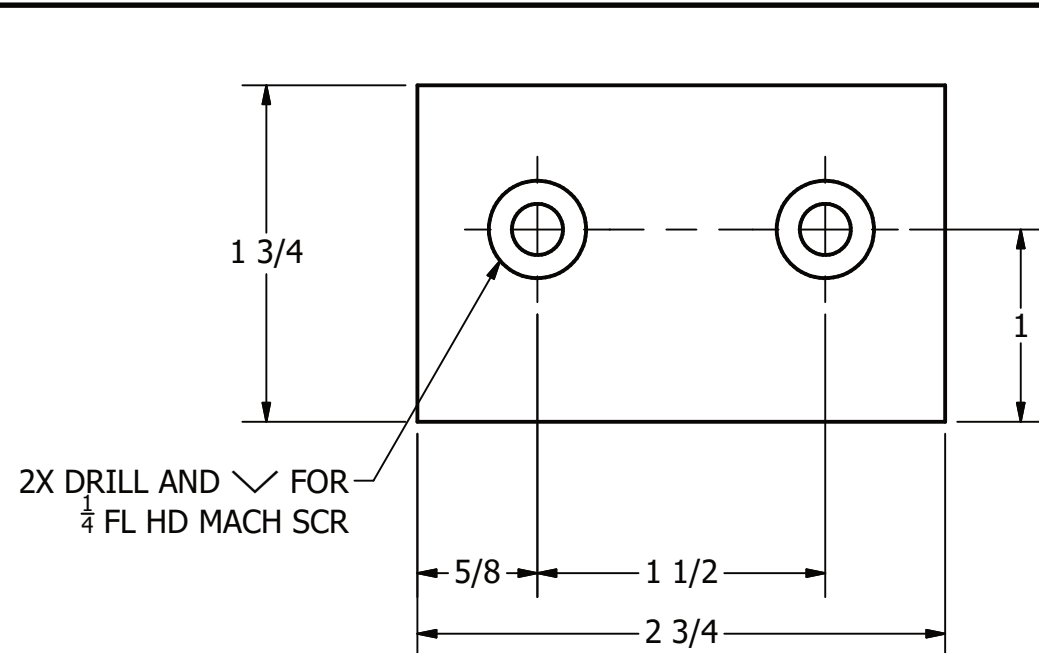




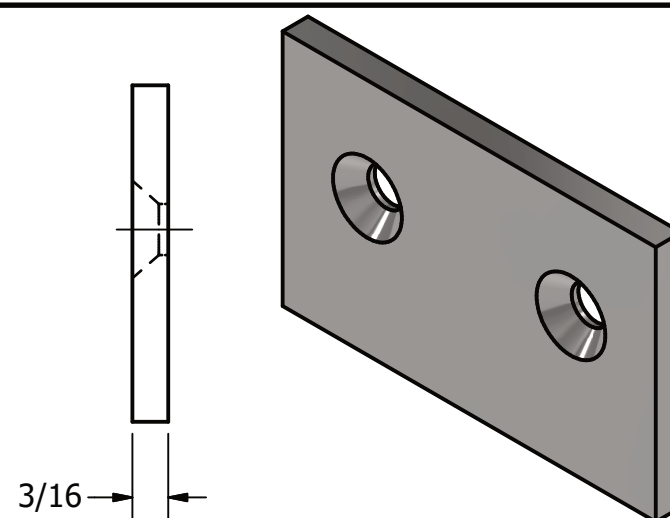
DIGITAL DESIGN  
GRAPHICS  
TECHNOLOGY

WWW.DDGT.NET

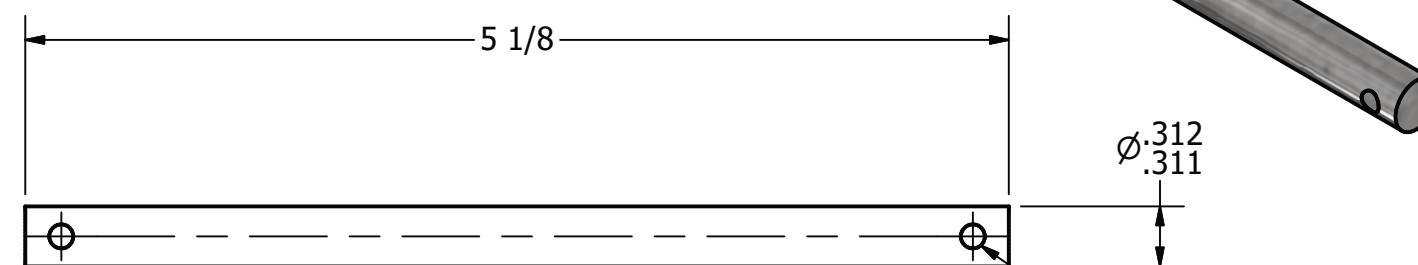
PARTS LIST		
ITEM	QTY	PART NUMBER
3	2	JAW PLATE
5	1	HANDLE ROD
7	1	COLLAR
8	2	HANDLE BALL
11	1	SPECIAL KEY



JAW PLATE  
SCALE 1 : 1

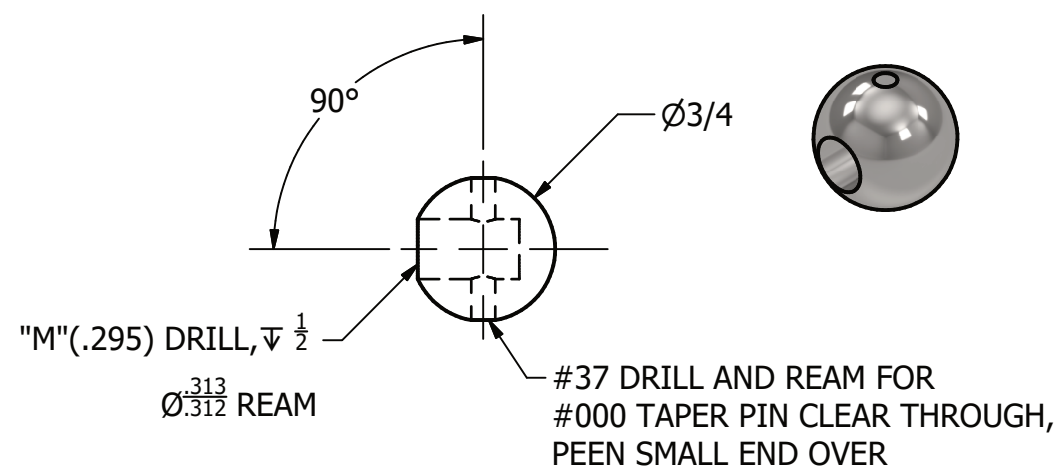


3/16

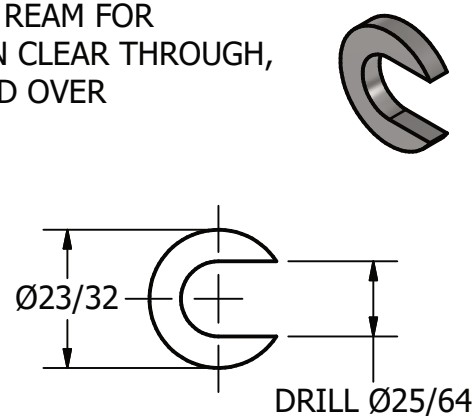


HANDLE ROD  
SCALE 1 : 1

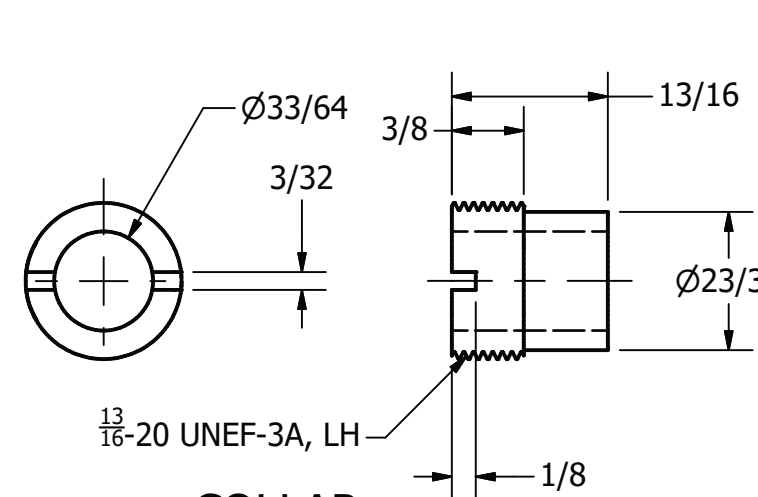
2X #37 DRILL AND REAM  
WITH PART #8 IN PLACE



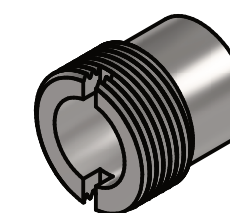
HANDLE BALL  
SCALE 1 : 1



SPECIAL KEY  
SCALE 1 : 1



COLLAR  
SCALE 1 : 1



**LEGEND:**

- Ø DIAMETER
- R RADIUS
- COUNTERBORE/  
SPOTFACE
- ∨ COUNTERSINK
- ∇ DEPTH

TOLERANCES UNLESS SPECIFIED:  
DECIMAL INCHES:  
X = ±.020  
XX = ±.010  
XXX = ±.005  
FRACTIONAL ±1/64"  
ANGLES ±1 DEGREE  
SURFACES 32

CLASS: DDGT 240

ASSIGNMENT #: 38

INVENTOR DRAWING NAME:  
MACHINE VISE

FIG #: 14-71

MANAGER: G. STROMMEN

DRAFTER: A. MOSTAFA

DATE: 9/28/2023

SCALE: AS NOTED

PAGE #: 9 OF 9

**GENERAL NOTES:**

ALL FILLETS AND ROUNDS R 1/8" UNLESS OTHERWISE STATED.