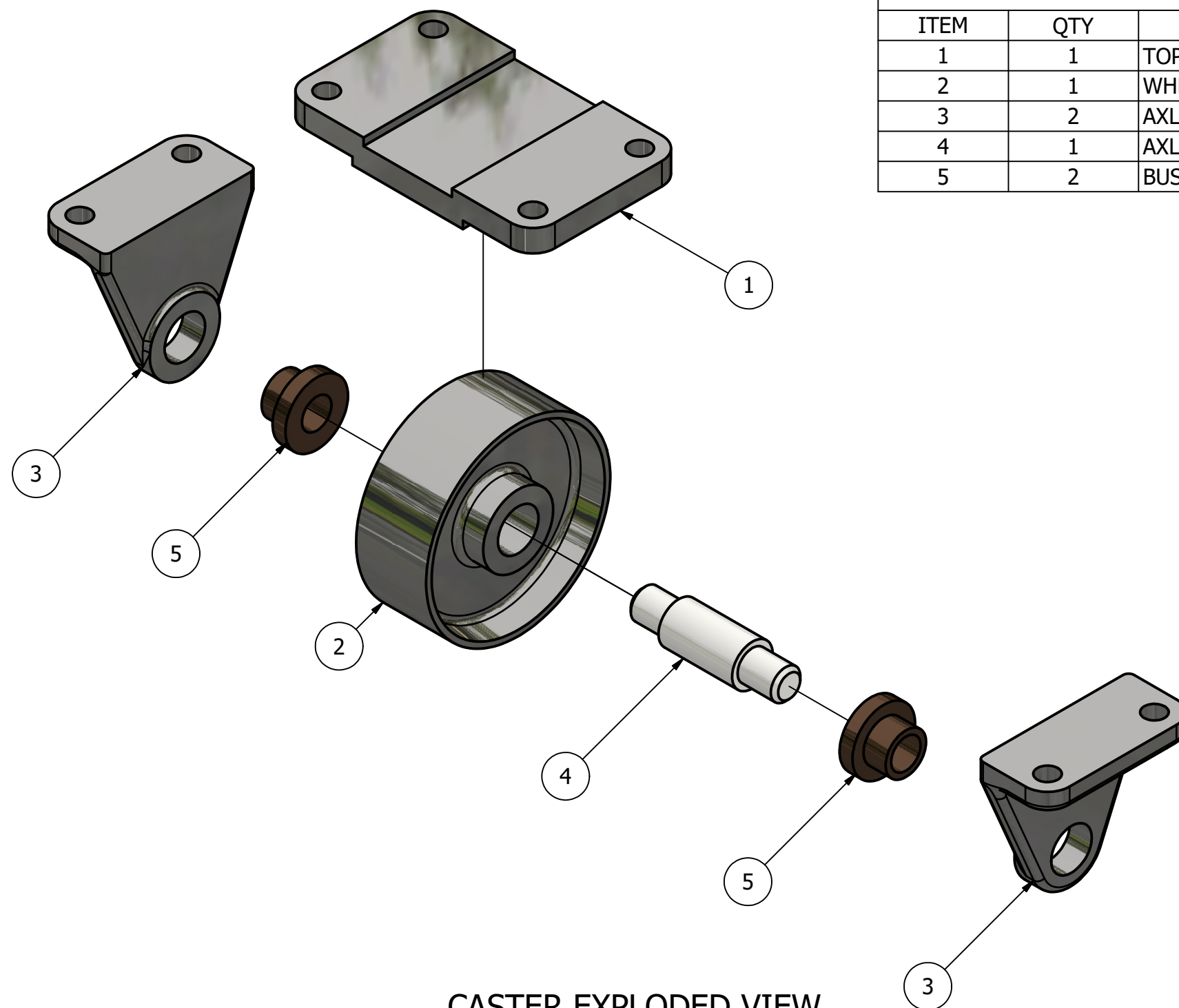


PARTS LIST			
ITEM	QTY	PART NUMBER	MATERIAL
1	1	TOP PLATE	MALLEABLE IRON
2	1	WHEEL	MALLEABLE IRON
3	2	AXLE SUPPORT	MALLEABLE IRON
4	1	AXLE	SAE 1020
5	2	BUSHING	BRONZE

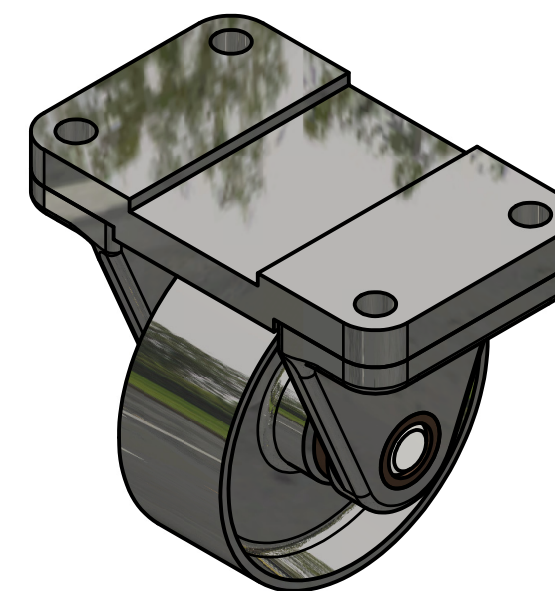


DIGITAL DESIGN  
GRAPHICS  
TECHNOLOGY

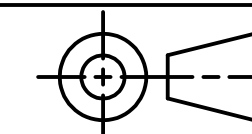
WWW.DDGT.NET



CASTER EXPLODED VIEW  
SCALE 1 / 2



CASTER ASSEMBLY  
SCALE 1 / 2



TOLERANCES UNLESS SPECIFIED:  
DECIMAL INCHES:  
X = ±.020  
XX = ±.010  
XXX = ±.005  
FRACTIONAL ±1/64"  
ANGLES ±1 DEGREE  
SURFACES  $\sqrt{\text{32}}$

CLASS: DDGT 120

ASSIGNMENT #: 67

INVENTOR DRAWING NAME:  
9-51 CASTER

FIG #: 9-51

MANAGER: G. STROMMEN

DRAFTER: A. MOSTAFA

DATE: 11/10/2022

SCALE: AS NOTED

PAGE #: 1 OF 3

### GENERAL NOTES:

FASTEN ASSEMBLY TO A 6mm STEEL PLATE BY FOUR M10 X40mm LONG HEX HD BOLTS,NUTS AND LOCK WASHERS.

ROUNDS AND FILLETS R 3

FIT	BETWEEN PARTS
H8/f7	4 AND 5
H7/p6	3 AND 5
H8/f7	2 AND 4

**METRIC**

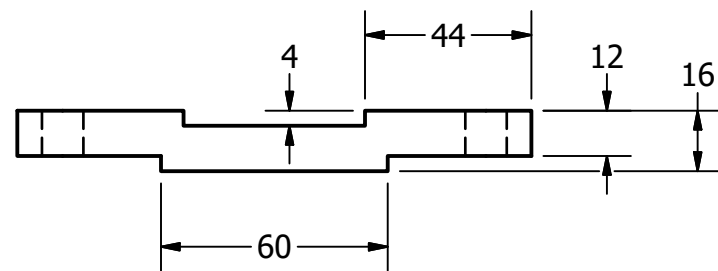
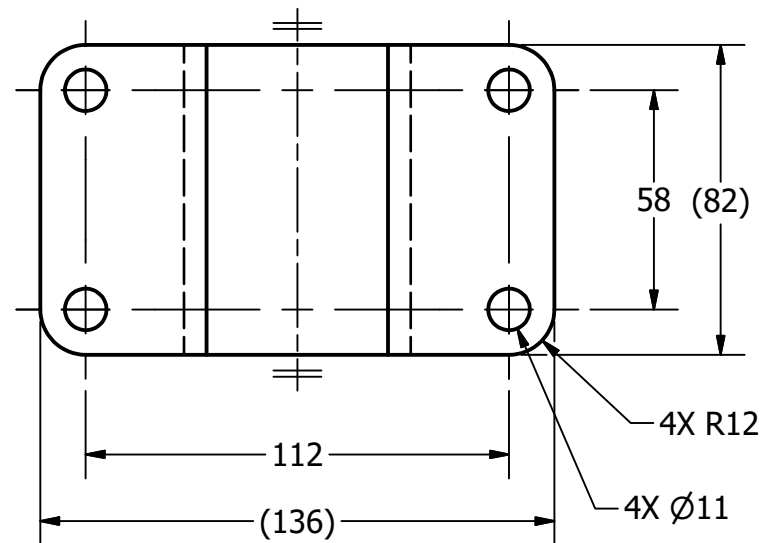
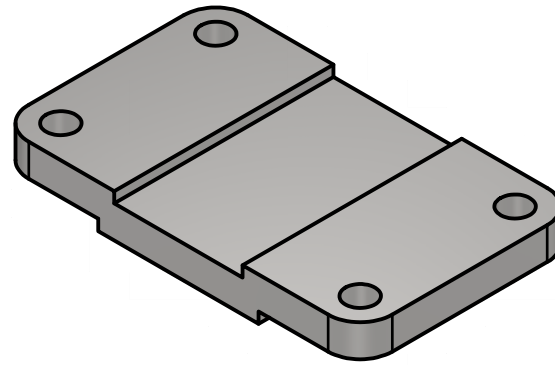
### LEGEND:

- ∅ DIAMETER
- R RADIUS
- ° DEGREES
- $\sqrt{\quad}$  COUNTERBORE/  
SPOTFACE

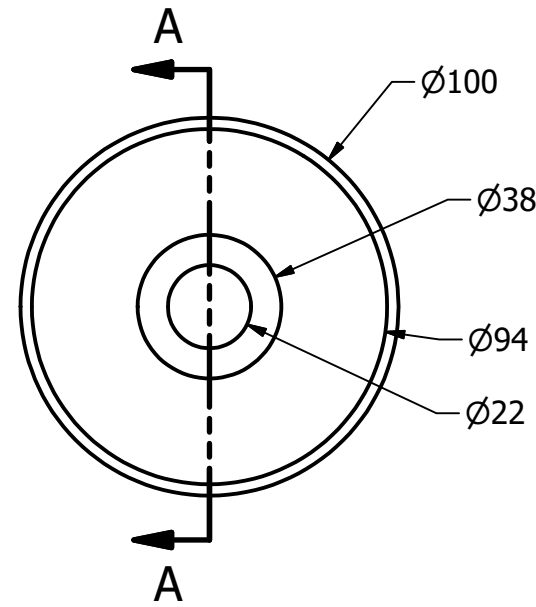
# GENERAL NOTES:

FASTEN ASSEMBLY TO A 6mm STEEL PLATE BY FOUR M10 X40mm LONG HEX HD BOLTS,NUTS AND LOCK WASHERS.

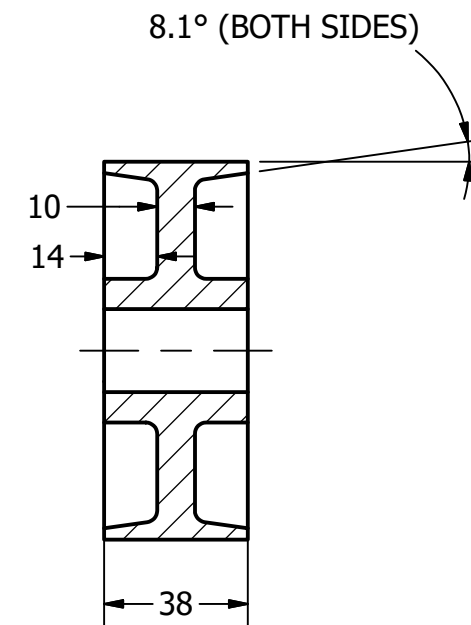
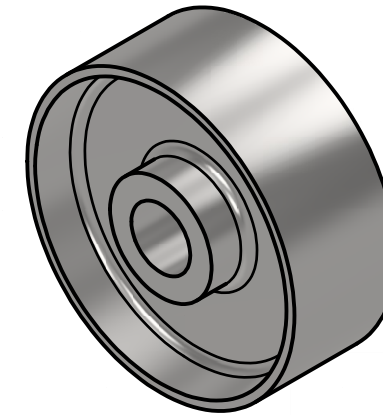
ROUNDS AND FILLETS R 3



TOP PLATE  
SCALE 1 / 2



WHEEL  
SCALE 1 / 2



SECTION A-A  
SCALE 1 / 2

**METRIC**

## LEGEND:

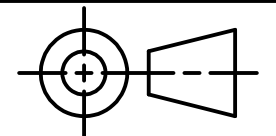
- Ø DIAMETER
- R RADIUS
- ° DEGREES
- COUNTERBORE/  
SPOTFACE

PARTS LIST		
ITEM	QTY	PART NUMBER
1	1	TOP PLATE
2	1	WHEEL



DIGITAL DESIGN  
GRAPHICS  
TECHNOLOGY

WWW.DDGT.NET



TOLERANCES UNLESS SPECIFIED:  
DECIMAL INCHES:  
X = ±.020  
XX = ±.010  
XXX = ±.005  
FRACTIONAL ±1/64"  
ANGLES ±1 DEGREE  
SURFACES  $\sqrt{\text{32}}$

CLASS: DDGT 120

ASSIGNMENT #: 67

INVENTOR DRAWING NAME:  
9-51 CASTER

FIG #: 9-51

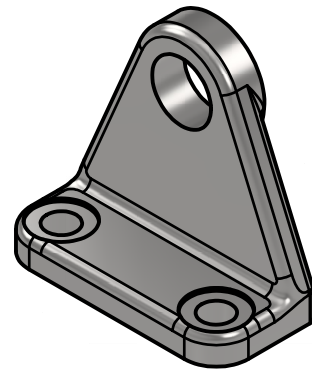
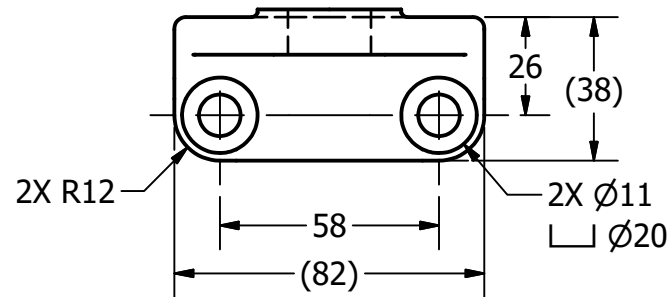
MANAGER: G. STROMMEN

DRAFTER: A. MOSTAFA

DATE: 11/10/2022

SCALE: AS NOTED

PAGE #: 2 OF 3



PARTS LIST		
ITEM	QTY	PART NUMBER
3	2	AXLE SUPPORT
4	1	AXLE
5	2	BUSHING



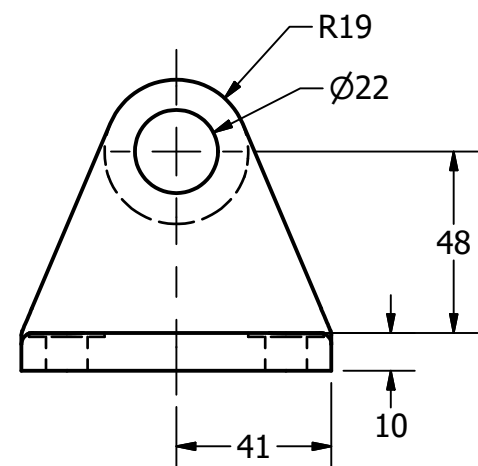
DIGITAL DESIGN  
GRAPHICS  
TECHNOLOGY

WWW.DDGT.NET

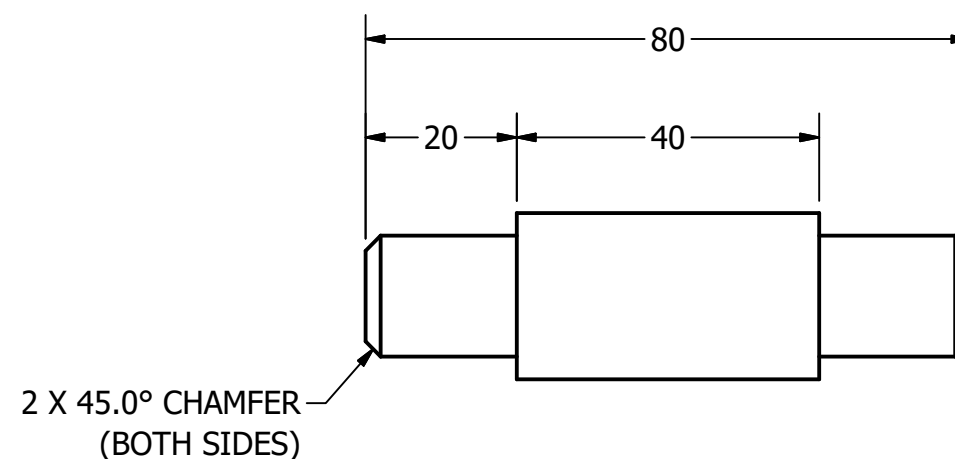
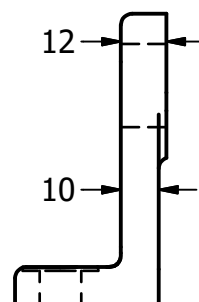
### GENERAL NOTES:

FASTEN ASSEMBLY TO A 6mm STEEL PLATE BY FOUR M10 X40mm LONG HEX HD BOLTS,NUTS AND LOCK WASHERS.

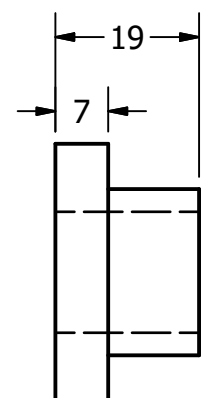
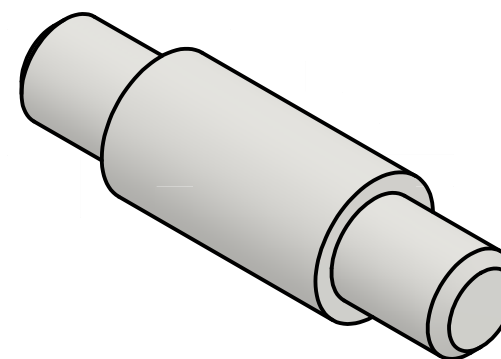
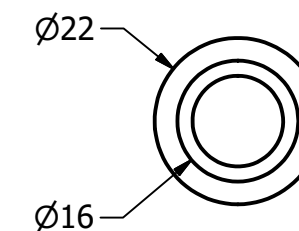
ROUNDS AND FILLETS R 3



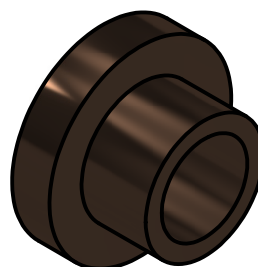
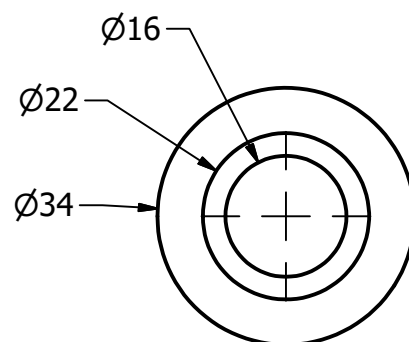
AXLE SUPPORT  
SCALE 1 / 2



AXLE  
SCALE 1 : 1



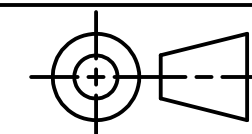
BUSHING  
SCALE 1 : 1



**METRIC**

### LEGEND:

- Ø DIAMETER
- R RADIUS
- ° DEGREES
- COUNTERBORE/  
SPOTFACE



TOLERANCES UNLESS SPECIFIED:  
DECIMAL INCHES:  
X = ±.020  
XX = ±.010  
XXX = ±.005  
FRACTIONAL ±1/64"  
ANGLES ±1 DEGREE  
SURFACES  $\sqrt{\text{V}}$

CLASS: DDGT 120

ASSIGNMENT #: 67

INVENTOR DRAWING NAME:  
9-51 CASTER

FIG #: 9-51

MANAGER: G. STROMMEN

DRAFTER: A. MOSTAFA

DATE: 11/10/2022

SCALE: AS NOTED

PAGE #: 3 OF 3