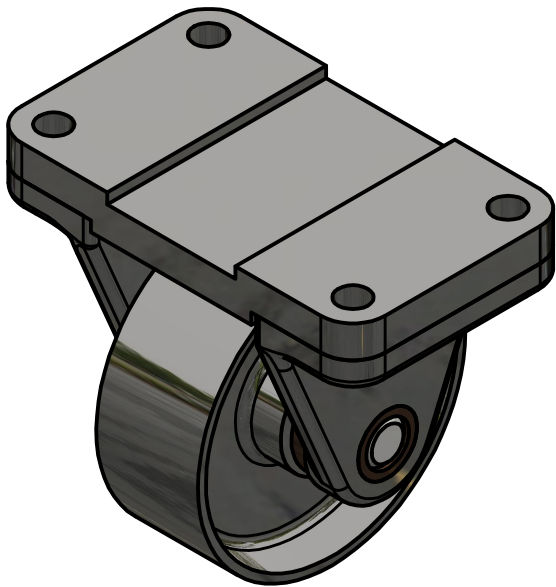


CASTER EXPLODED ASSEMBLY
SCALE 1 / 2

PARTS LIST			
ITEM	QTY	PART NUMBER	MATERIAL
1	1	TOP PLATE	MALLEABLE IRON
2	1	WHEEL	MALLEABLE IRON
3	2	AXLE SUPPORT	MALLEABLE IRON
4	1	AXLE	SAE 1020
5	2	BUSHING	BRONZE

LEGEND:

- Ø DIAMETER
- R RADIUS
- ° DEGREES
- ┐ SPOTFACE



CASTER ASSEMBLY
SCALE 1 / 2

METRIC

GENERAL NOTES:

FASTEN ASSEMBLY TO A 6mm STEEL PLATE BY FOUR M10 X 40mm LG HEX HD BOLTS, NUTS AND LOCK WASHERS. SHOW THE STEEL PLATE IN PHANTOM LINES.

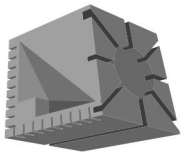
ROUNDS AND FILLETS R 3

FIT	BETWEEN PARTS
H8/f7	4 AND 5
H7/p6	3 AND 5
H8/f7	2 AND 4



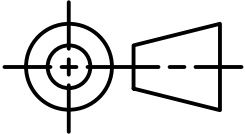
DIGITAL DESIGN
GRAPHICS
TECHNOLOGY

WWW.DDGT.NET



Chase Humphreys
Digital and Graphic Designer
707-350-5739
chasehumphreys@gmail.com
www.ddgt.net/StudentPages/chumphreys

ASSIMILATED
DESIGN



TOLERANCES UNLESS SPECIFIED:
MILLIMETERS:
WHOLE NUMBER = ±.5
X = ±.25
XX = ±.12

ANGLES ±1 DEGREE

SURACES 32 ✓

COURSE: DDGT 120

INVENTOR DRAWING NAME:
9-51 CASTER

FIGURE: 9-51

DRAFTER: C. HUMPHREYS

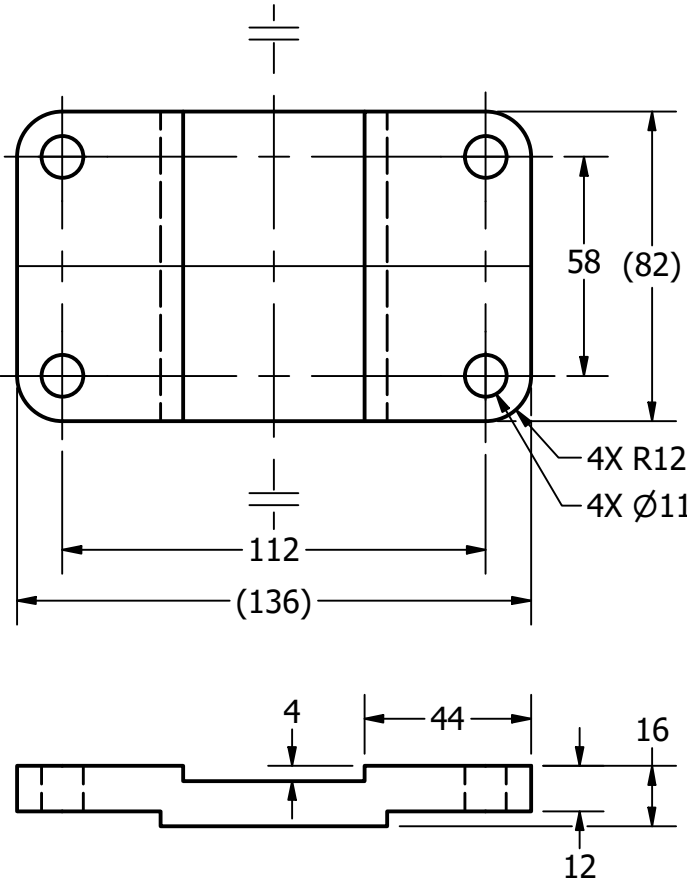
DATE: 11/16/2020

SCALE: AS NOTED

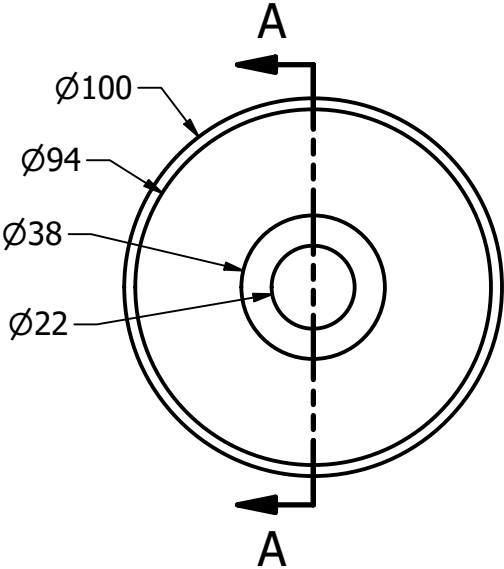
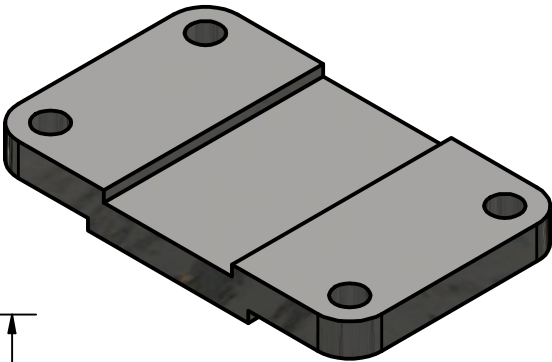
PAGE #: 1 OF 3

PARTS LIST		
ITEM	QTY	PART NUMBER
1	1	TOP PLATE
2	1	WHEEL

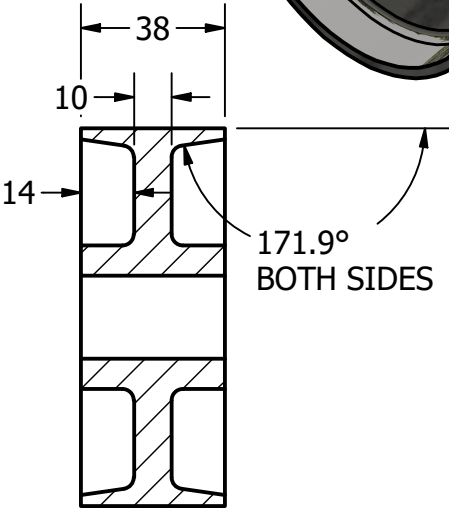
METRIC



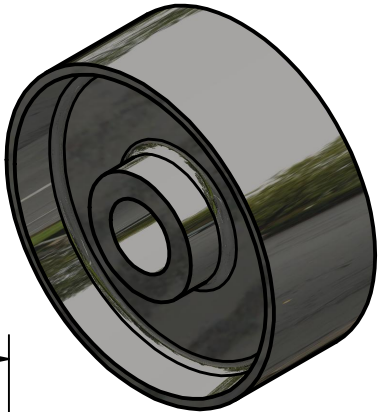
TOP PLATE
SCALE 1 : 2



WHEEL
SCALE 1 : 2



SECTION A-A
SCALE 1 : 2

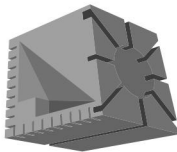


LEGEND:
 Ø DIAMETER
 R RADIUS
 ° DEGREES
 □ SPOTFACE



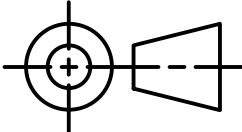
DIGITAL DESIGN
GRAPHICS
TECHNOLOGY

WWW.DDGT.NET



Chase Humphreys
Digital and Graphic Designer
707-350-5739
chasehumphreys@gmail.com
www.ddgt.net/StudentPages/chumphreys

ASSIMILATED
DESIGN



TOLERANCES UNLESS SPECIFIED:
MILLIMETERS:
WHOLE NUMBER = ±.5
X = ±.25
XX = ±.12

ANGLES ±1 DEGREE
SURACES 32 ✓

COURSE: DDGT 120

INVENTOR DRAWING NAME:
9-51 CASTER

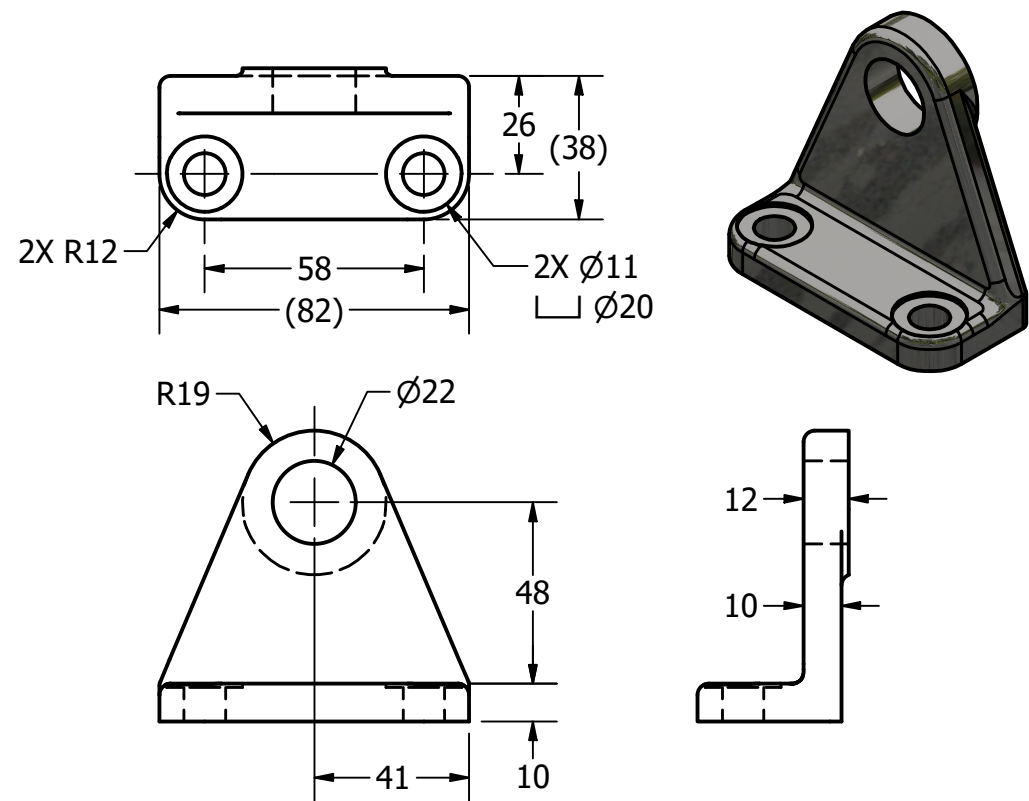
FIGURE: 9-51

DRAFTER: C. HUMPHREYS

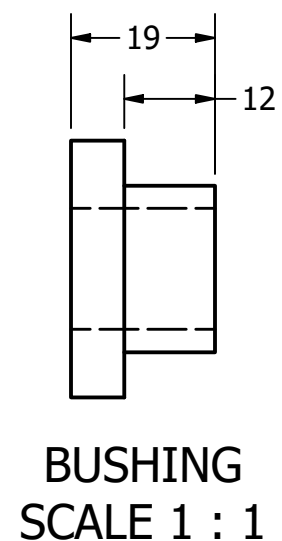
DATE: 11/16/2020

SCALE: AS NOTED

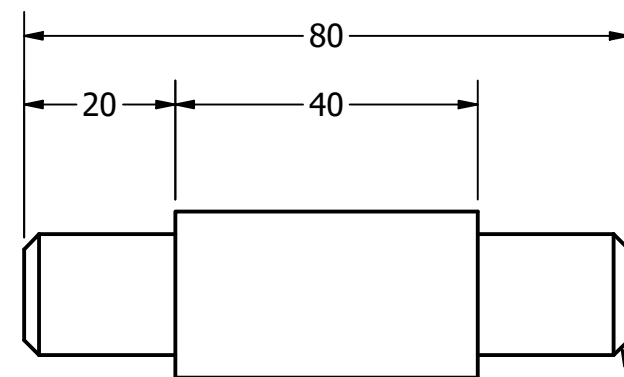
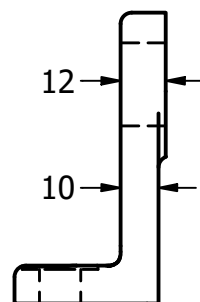
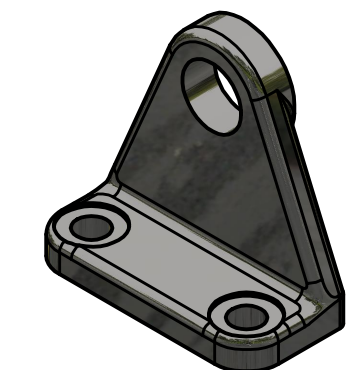
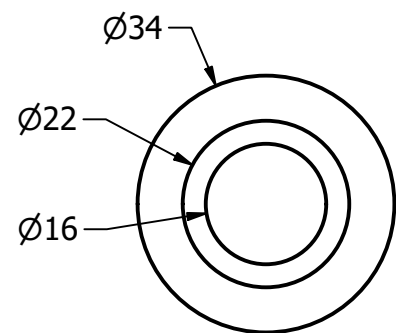
PAGE #: 2 OF 3



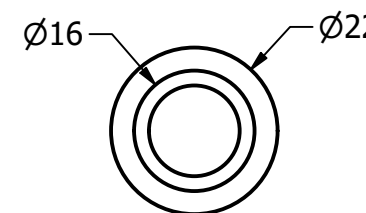
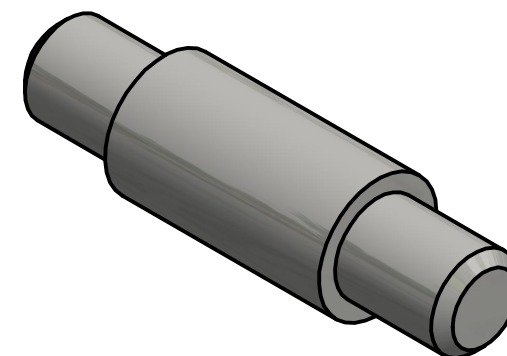
AXLE SUPPORT
SCALE 1 : 2



BUSHING
SCALE 1 : 1



AXLE
SCALE 1 : 1



2 X 45.0° CHAMFER
(BOTH SIDES)

PARTS LIST

ITEM	QTY	PART NUMBER
3	2	AXLE SUPPORT
4	1	AXLE
5	2	BUSHING

LEGEND:

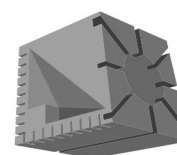
- Ø DIAMETER
- R RADIUS
- ° DEGREES
- SPOTFACE

METRIC



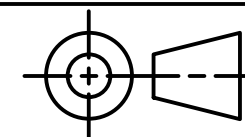
DIGITAL DESIGN
GRAPHICS
TECHNOLOGY

WWW.DDGT.NET



ASSIMILATED
DESIGN

Chase Humphreys
Digital and Graphic Designer
707-350-5739
chasehumphreys@gmail.com
www.ddgt.net/StudentPages/chumphreys



TOLERANCES UNLESS SPECIFIED:
MILLIMETERS:
WHOLE NUMBER = ±.5
X = ±.25
XX = ±.12

ANGLES ±1 DEGREE
SURFACES 32 ✓

COURSE: DDGT 120

INVENTOR DRAWING NAME:
9-51 CASTER

FIGURE: 9-51

DRAFTER: C. HUMPHREYS

DATE: 11/16/2020

SCALE: AS NOTED

PAGE #: 3 OF 3