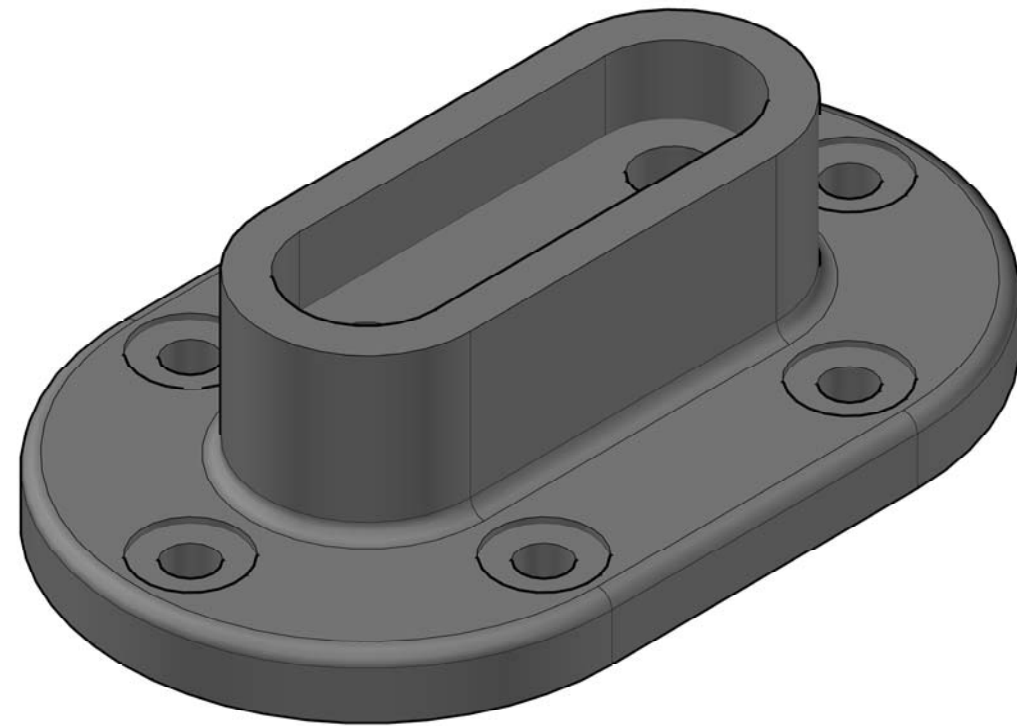


# PARTS LIST

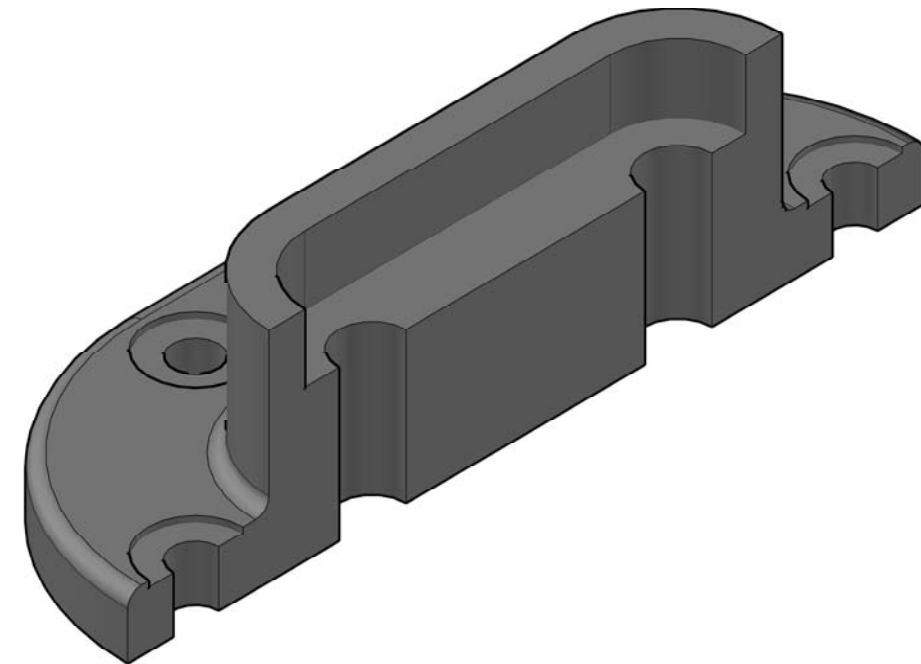
ITEM	QTY.	PART NAME	MATERIAL
1	1	SHAFT BASE	MALLEABLE IRON

## LEGEND:

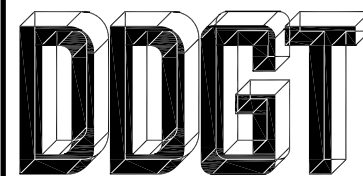
- ° DEGREES
- ∅ DIAMETER
- R RADIUS
- SPOTFACE



SHAFT BASE



SHAFT BASE SECTION VIEW

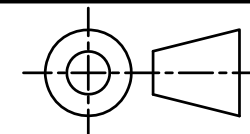


DIGITAL DESIGN  
GRAPHICS  
TECHNOLOGY

WWW.DDGT.NET



(707)208-7773 | dl.sipin@gmail.com | www.ddgt.net/StudentPages/djalotjot



TOLERANCES UNLESS SPECIFIED:  
DECIMAL INCHES:  
X = ±.020  
XX = ±.010  
XXX = ±.005  
FRACTIONAL ± 1/64"  
ANGLES ±1°

SURFACES 32/

COURSE: DDGT 120

AUTOCAD DRAWING NAME:

SHAFT BASE

FIG#: 9-35

DRAFTER: D. JALOTJOT

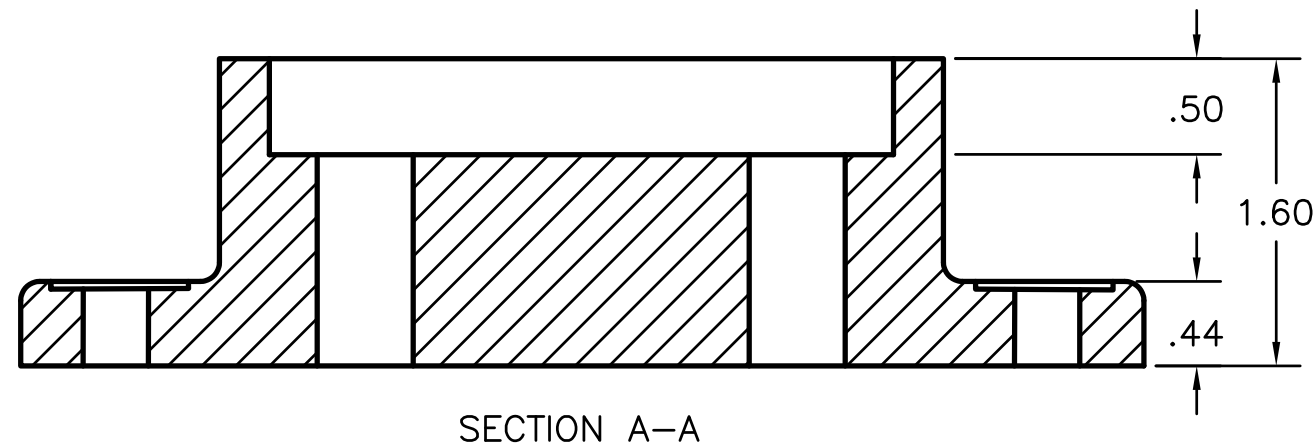
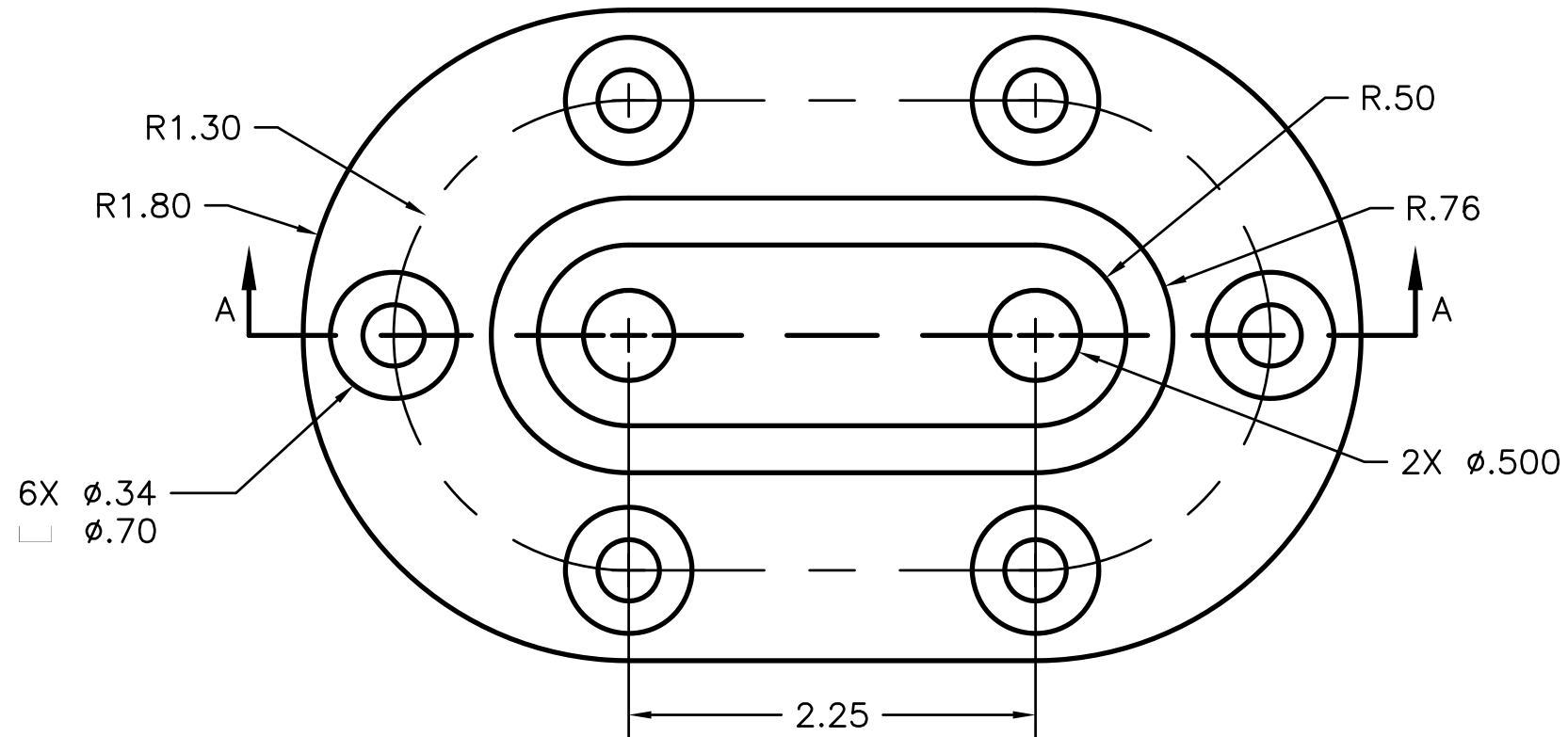
DATE: 11/22/2017

SCALE: 1:1

PAGE#: 1 OF 2

# PARTS LIST

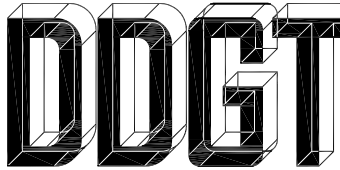
ITEM	QTY.	PART NAME
1	1	SHAFT BASE



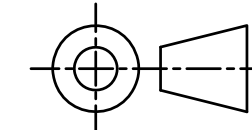
## LEGEND:

- ° DEGREES
- $\phi$  DIAMETER
- R RADIUS
- $\square$  SPOTFACE

GENERAL NOTES:  
 ROUNDS AND FILLETS R.10

  
 DIGITAL DESIGN  
 GRAPHICS  
 TECHNOLOGY  
 WWW.DDGT.NET

  
 Design  
 &  
 Animation  
 by Danielle Jalotjot  
 (707)208-7773 | dl.sipin@gmail.com | www.ddgt.net/StudentPages/djalotjot



TOLERANCES UNLESS SPECIFIED:  
 DECIMAL INCHES:  
 X =  $\pm$ .020  
 XX =  $\pm$ .010  
 XXX =  $\pm$ .005  
 FRACTIONAL  $\pm$  1/64"  
 ANGLES  $\pm$ 1°

SURFACES  $\frac{32}{\sqrt{\quad}}$

COURSE:	DDGT 120
AUTOCAD DRAWING NAME:	SHAFT BASE
FIG#:	9-35
DRAFTER:	D. JALOTJOT
DATE:	11/22/2017
SCALE:	1:1
PAGE#:	2 OF 2