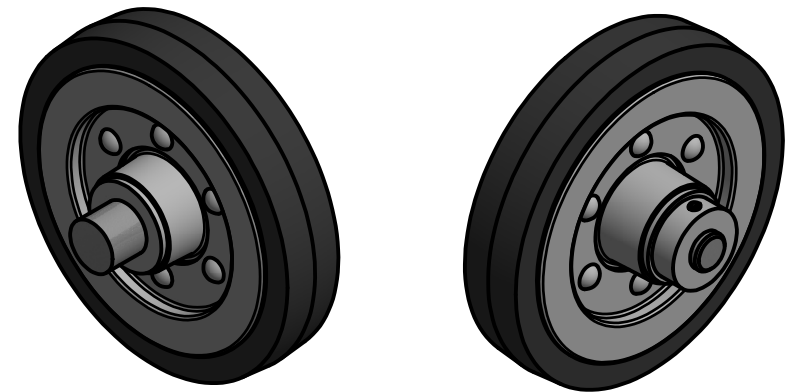
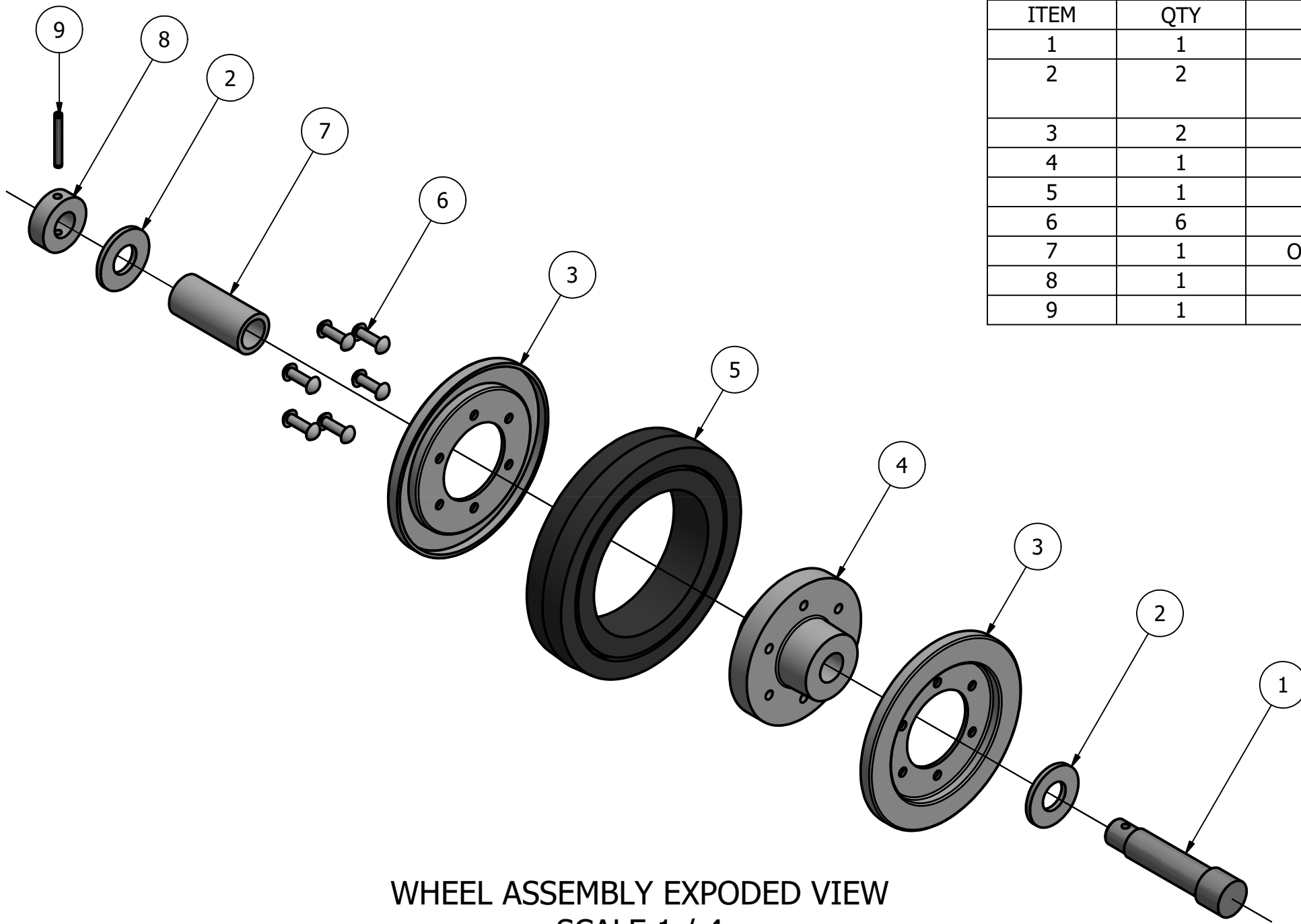


PARTS LIST				
ITEM	QTY	PART NUMBER	MATERIAL	DESCRIPTION
1	1	AXLE	COLD ROLLED STEEL	
2	2	WASHER	STANDARD	ID \varnothing 1.00, OD \varnothing 2.12, .18" THICK
3	2	SIDE PANEL	MILD STEEL	.12 UNIFORM THICKNESS
4	1	RIM	COLD ROLLED STEEL	
5	1	WHEEL	CAST IRON	
6	6	RIVET	STANDARD	.31 X 1.00" LONG
7	1	OILLESS BUSHING	CAST IRON	
8	1	WHEEL LOCK	MILD STEEL	
9	1	SPRING PIN	STANDARD	\varnothing .25 X 1.875" LONG



ASSEMBLY VIEW
SCALE 1 / 4

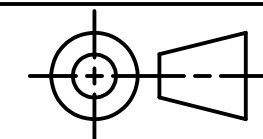
WHEEL ASSEMBLY EXPLODED VIEW
SCALE 1 / 4

GENERAL NOTES:
FILLETS AND ROUNDS R .0625



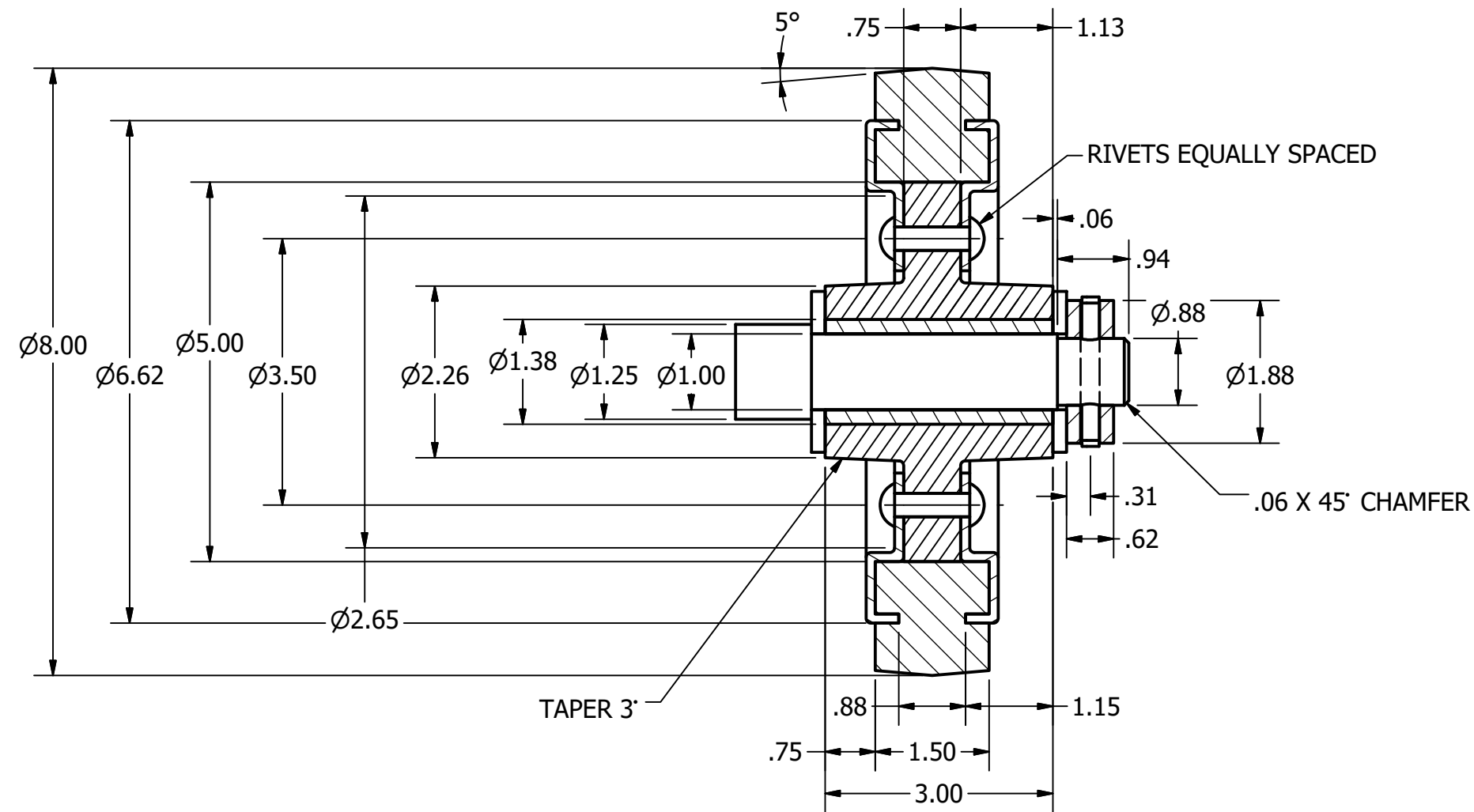
DIGITAL DESIGN
GRAPHICS
TECHNOLOGY

WWW.DDGT.NET



TOLERANCES UNLESS SPECIFIED:
DECIMAL INCHES:
X = \pm .020
XX = \pm .010
XXX = \pm .005
FRACTIONAL \pm 1/64"
ANGLES \pm 1 DEGREE
SURFACES $\sqrt{32}$

COURSE:	DDGT121
INVENTOR DRAWING NAME:	WHEEL ASSEMBLY
FIG #:	11-55
DRAFTER:	D. JALOTJOT
DATE:	2/20/2018
SCALE:	AS NOTED
PAGE #:	1 OF 2



SECTION VIEW
SCALE 1 / 2

PARTS LIST		
ITEM	QTY	PART NUMBER
1	1	AXLE
2	2	WASHER
3	2	SIDE PANEL
4	1	RIM
5	1	WHEEL
6	6	RIVET
7	1	OILLESS BUSHING
8	1	WHEEL LOCK
9	1	SPRING PIN

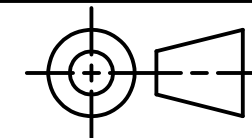
LEGEND:
 Ø DIAMETER
 R RADIUS
 ° DEGREES

GENERAL NOTES:
 FILLETS AND ROUNDS R .0625



DIGITAL DESIGN
 GRAPHICS
 TECHNOLOGY

WWW.DDGT.NET



TOLERANCES UNLESS SPECIFIED:
 DECIMAL INCHES:
 X = ±.020
 XX = ±.010
 XXX = ±.005
 FRACTIONAL ±1/64"
 ANGLES ±1 DEGREE
 SURFACES $\sqrt{32}$

COURSE:	DDGT121
INVENTOR DRAWING NAME:	WHEEL ASSEMBLY
FIG #:	11-55
DRAFTER:	D. JALOTJOT
DATE:	2/20/2018
SCALE:	AS NOTED
PAGE #:	2 OF 2