

FASTEN ASSEMBLY TO 6MM STEEL PLATE BY FOUR M10 X 40MM LG HEX HD BOLT, NUTS AND LOCK WASHERS.

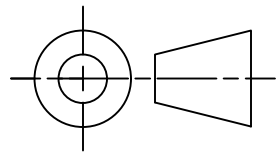
ROUNDS AND FILLETS R3

LEGEND

∅ DIAMETER

R RADIUS

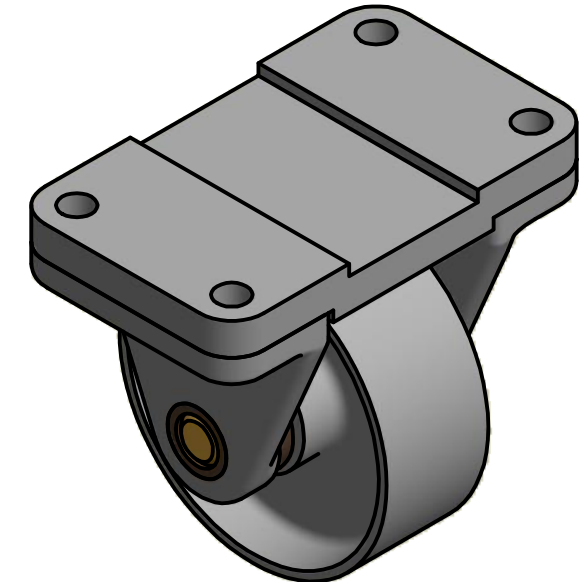
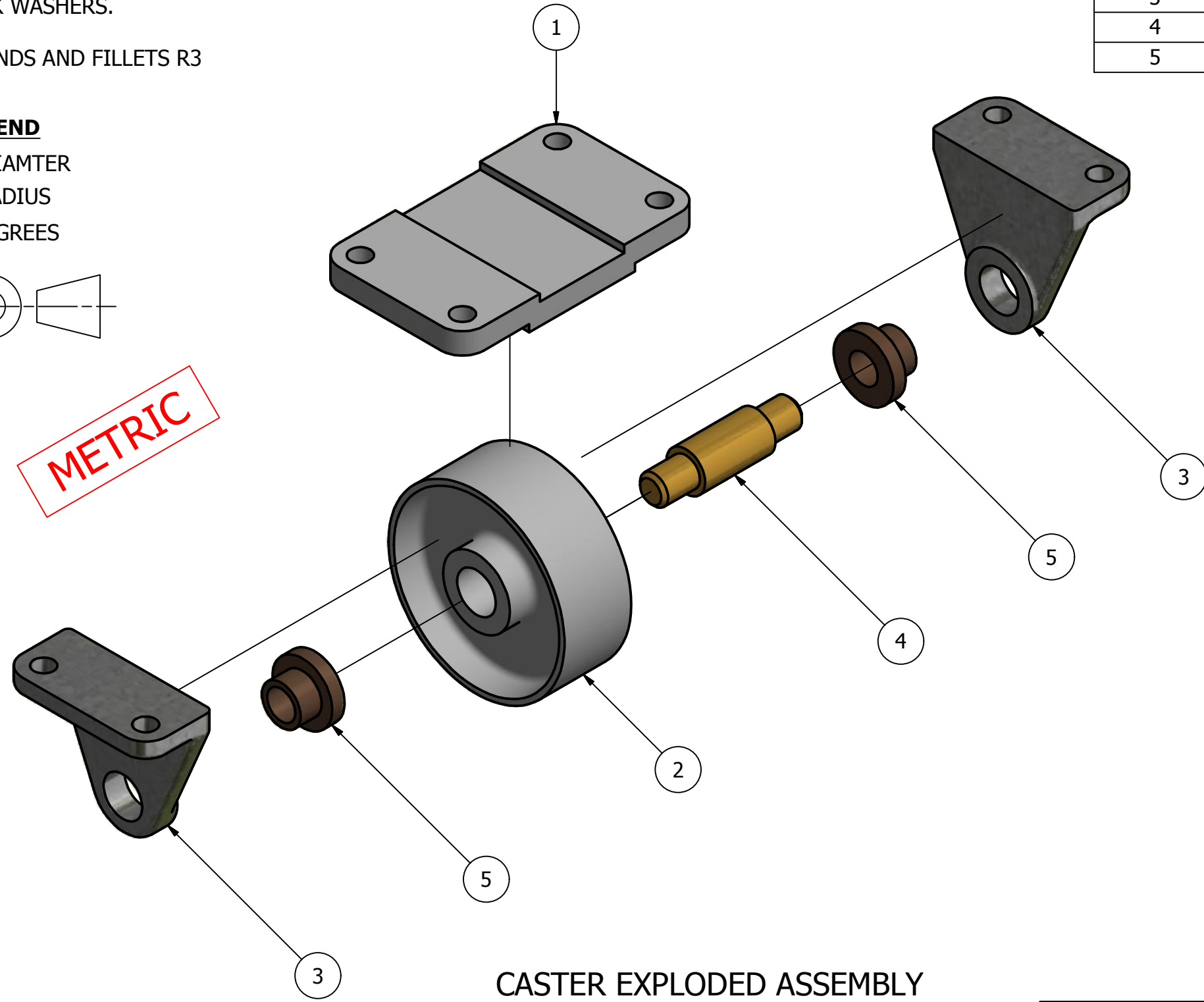
° DEGREES



METRIC

FITS	BETWEEN PARTS
H8/f7	4 AND 5
h7/p6	3 AND 5
h8/f7	2 AND 4

PARTS LIST			
ITEM	QTY	PART NUMBER	MATERIAL
1	1	TOP PLATE	MALLEABLE IRON
2	1	WHEEL	MALLEABLE IRON
3	2	AXLE SUPPORT	MALLEABLE IRON
4	1	AXLE	SAE 1020
5	2	BUSHING	BRONZE

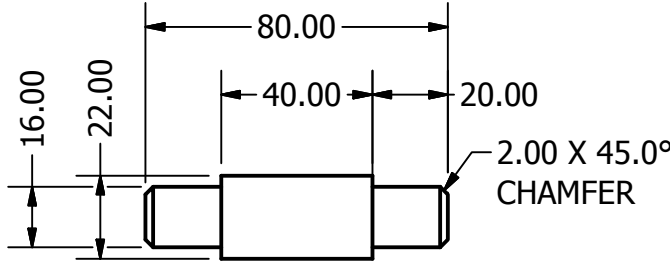
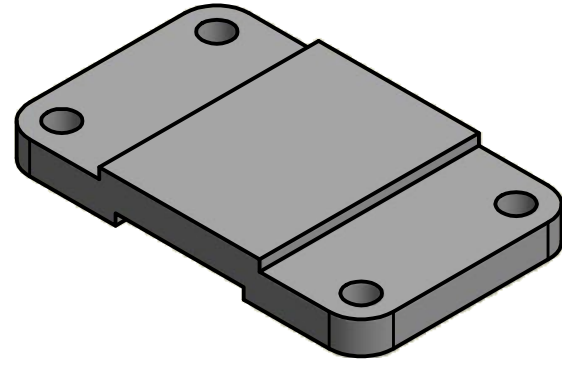
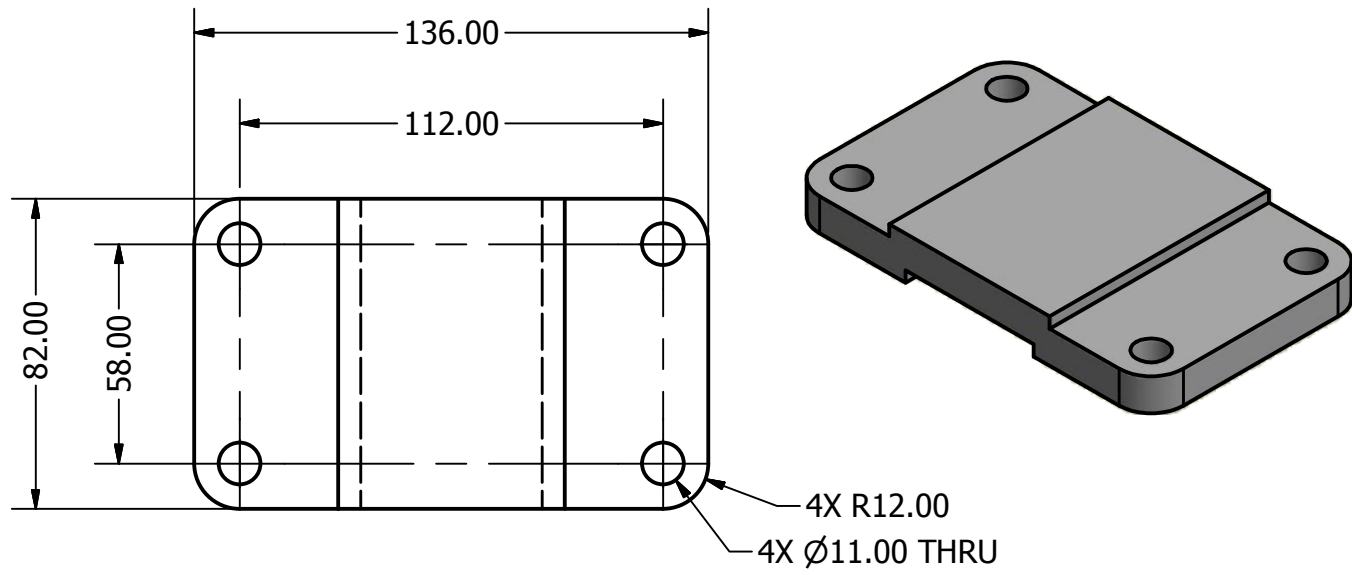


CASTER ASSEMBLY
SCALE 1 / 2

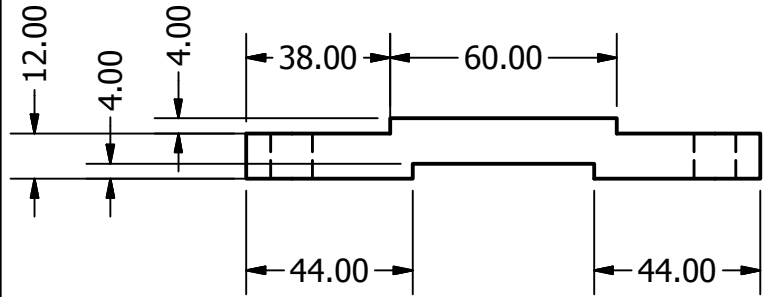
CASTER EXPLODED ASSEMBLY
SCALE 1 / 2

DIGITAL DESIGN GRAPHICS TECHNOLOGY	NAME:	E.PEREZ	DWG NAME:	9-51 CASTER	SHEET NO: 1 OF 2
	COURSE:	DDGT 120	SCALE:	AS NOTED:	
	DATE:	11-20-12			

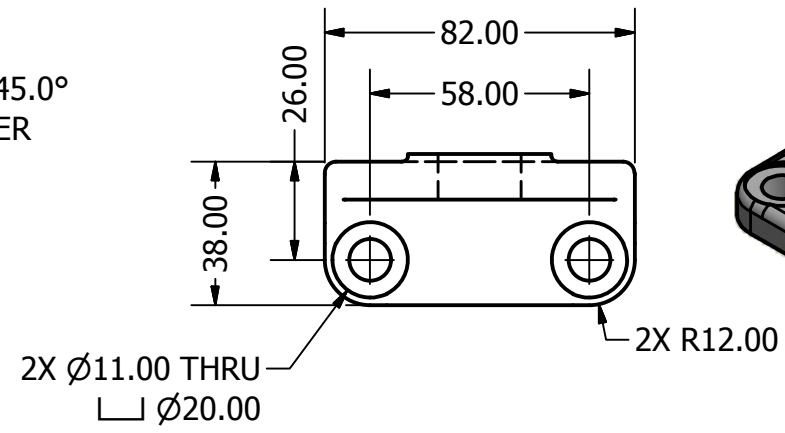
PARTS LIST		
ITEM	QTY	PART NUMBER
1	1	TOP PLATE
2	1	WHEEL
3	2	AXLE SUPPORT
4	1	AXLE
5	2	BUSHING



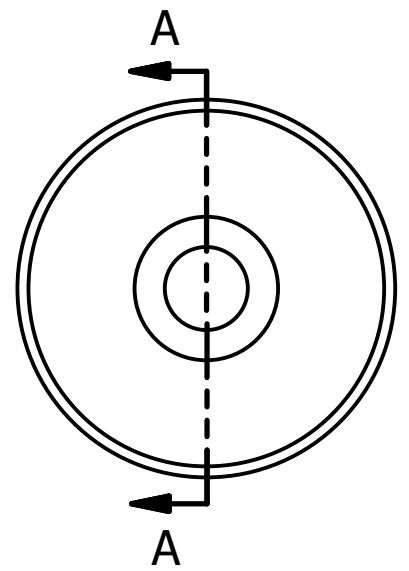
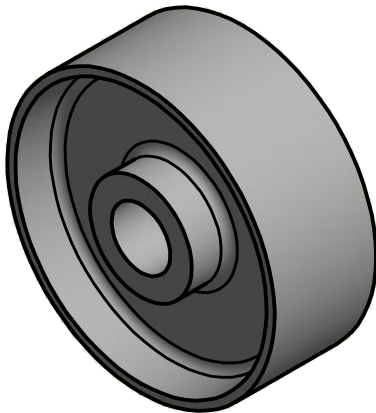
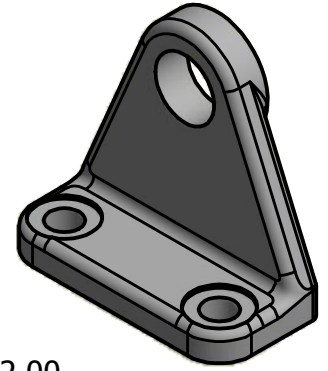
AXLE
SCALE 1 / 2



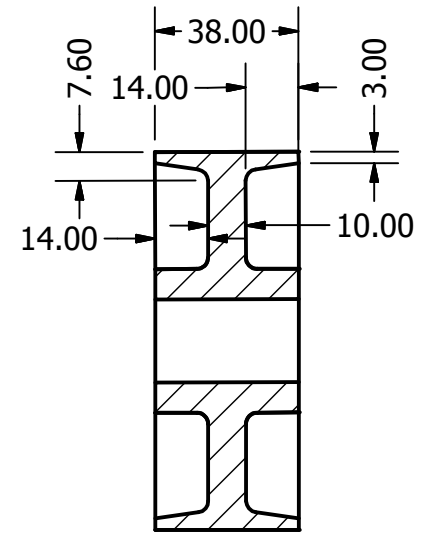
TOP PLATE
SCALE 1 / 2



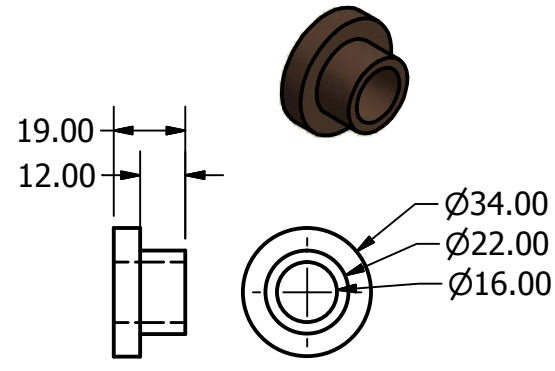
AXLE SUPPORT
SCALE 1 / 2



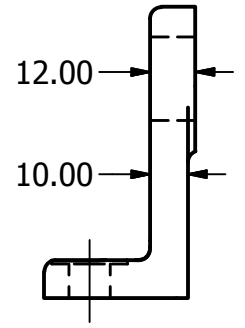
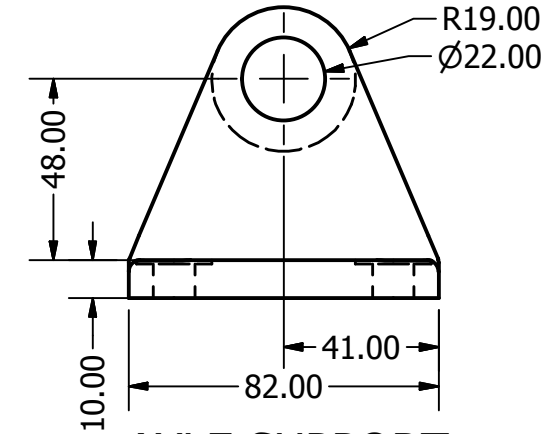
WHEEL
SCALE 1 / 2



SECTION A-A
SCALE 1 / 2



BUSHING
SCALE 1 / 2



DIGITAL DESIGN GRAPHICS TECHNOLOGY	NAME:	E.PEREZ	DWG NAME:	9-51 CASTER	SHEET NO: 2 OF 2
	COURSE:	DDGT 120	SCALE:	AS NOTED:	
	DATE:	11-20-12			