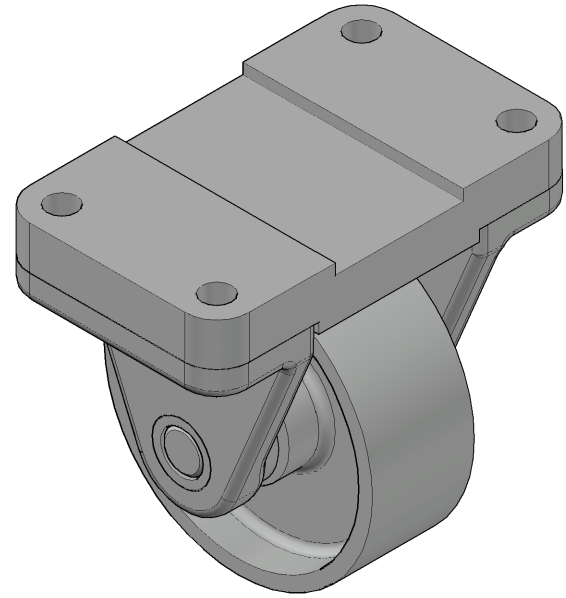
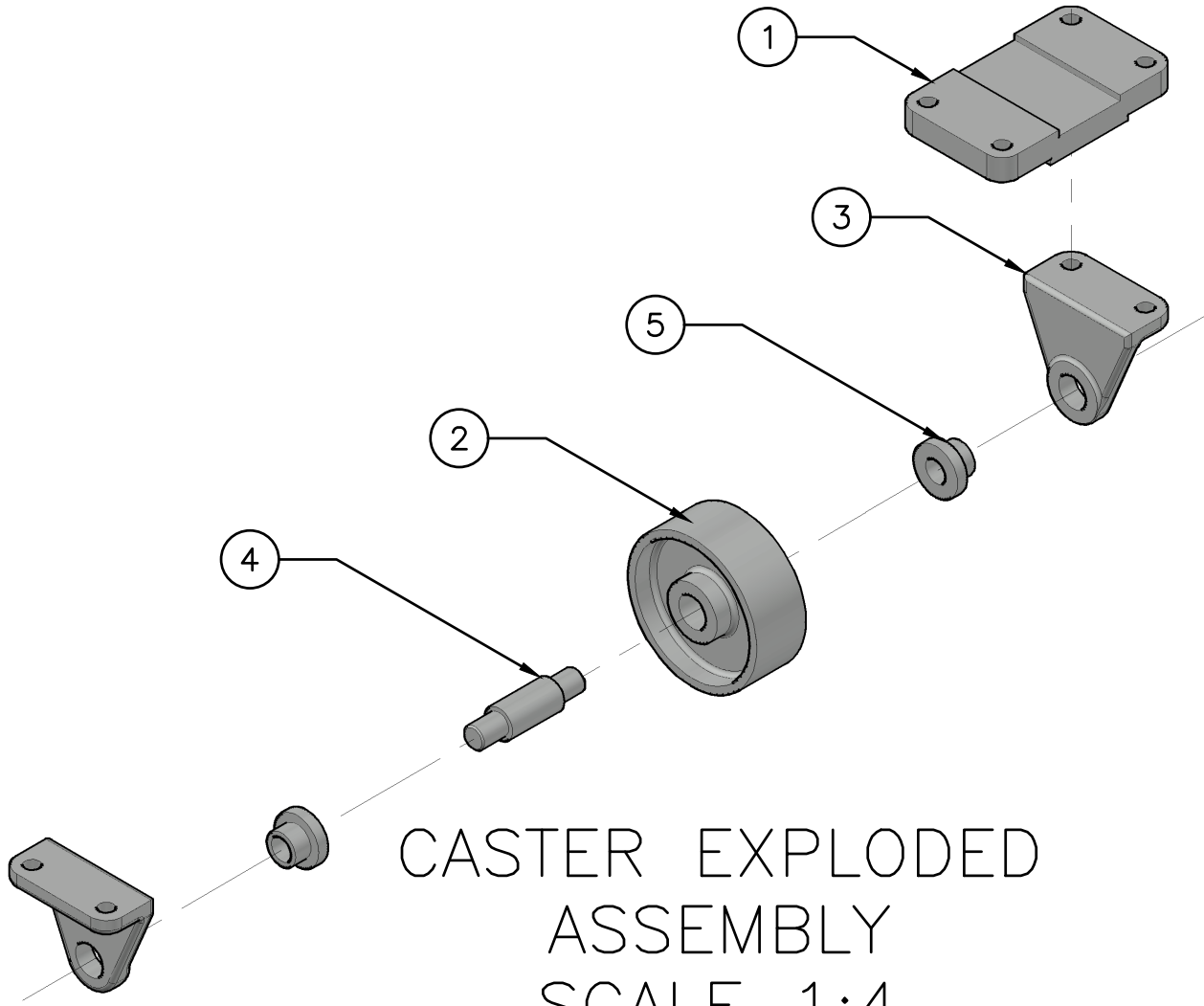


PARTS LIST			
ITEM	QTY.	PART NAME	MATERIAL
1	1	TOP PLATE	MALLEABLE IRON
2	1	WHEEL	MALLEABLE IRON
3	2	AXLE SUPPORT	MALLEABLE IRON
4	1	AXLE	SAE 1020
5	2	BUSHING	BRONZE

DIGITAL DESIGN
GRAPHIC
TECHNOLOGY
WWW.DDGT.NET



CASTER ASSEMBLY
SCALE 1:2



CASTER EXPLODED
ASSEMBLY
SCALE 1:4

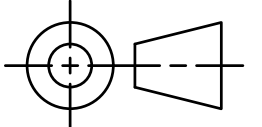
METRIC

GENERAL NOTES:
FASTEN ASSEMBLY TO A 6mm STEEL PLATE
BY FOUR M10 X 40 LONG HEX HEAD BOLTS,
NUTS, AND LOCK WASHER

ROUNDS AND FILLETS R3

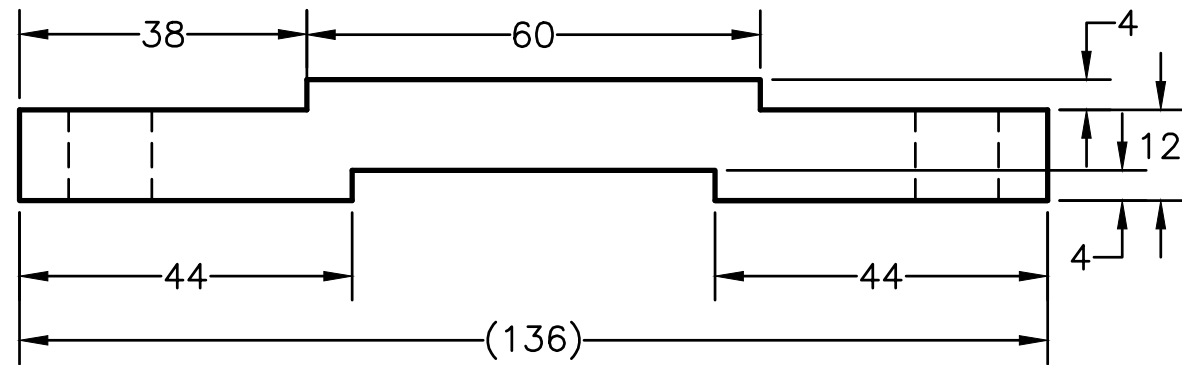
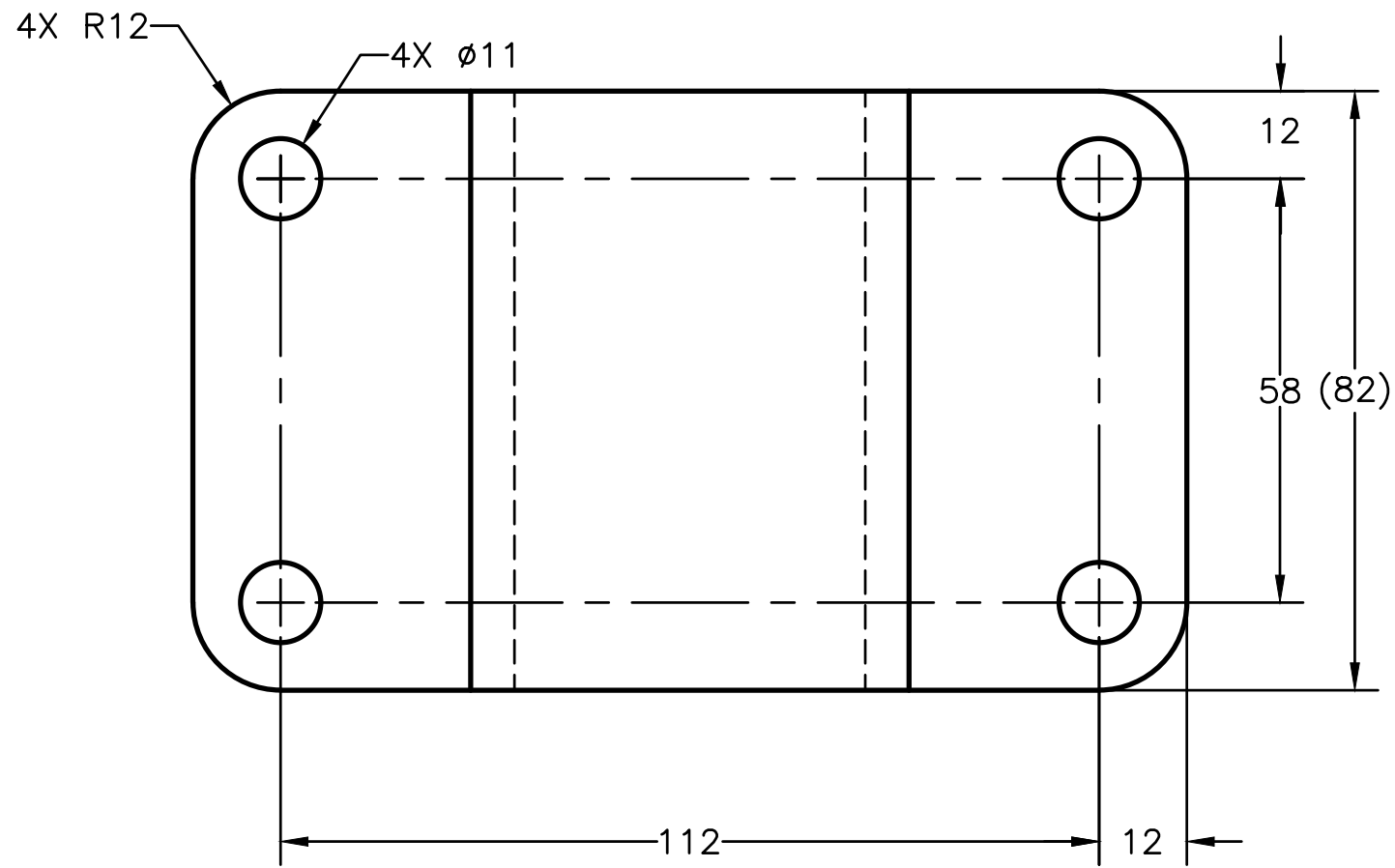
FIT	BETWEEN PARTS
H8/f7	4 AND 5
H7/p6	3 AND 5
H8/f7	2 AND 4

LEGEND:
 ∅ DIAMETER
 R RADIUS
 ° DEGREE
 | | SPOTFACE/COUNTERBORE



TOLERANCE UNLESS SPECIFIED:
MILLIMETERS:
WHOLE NUMBERS = ±.5
X = ±.25
XX = ±.12
FRACTIONAL ±1/16"
ANGLES ±1 DEGREE
SURFACES 32/

CLASS:	DDGT120
ASSIGNMENT #:	60
AUTOCAD DRAWING NAME:	CASTER ASSEMBLY
FIG #:	9-51
MANAGER:	G. STROMMEN
DRAFTER:	G.SILVA
DATE:	5/15/2023
SCALE:	AS NOTED
PAGE #:	1 OF 5



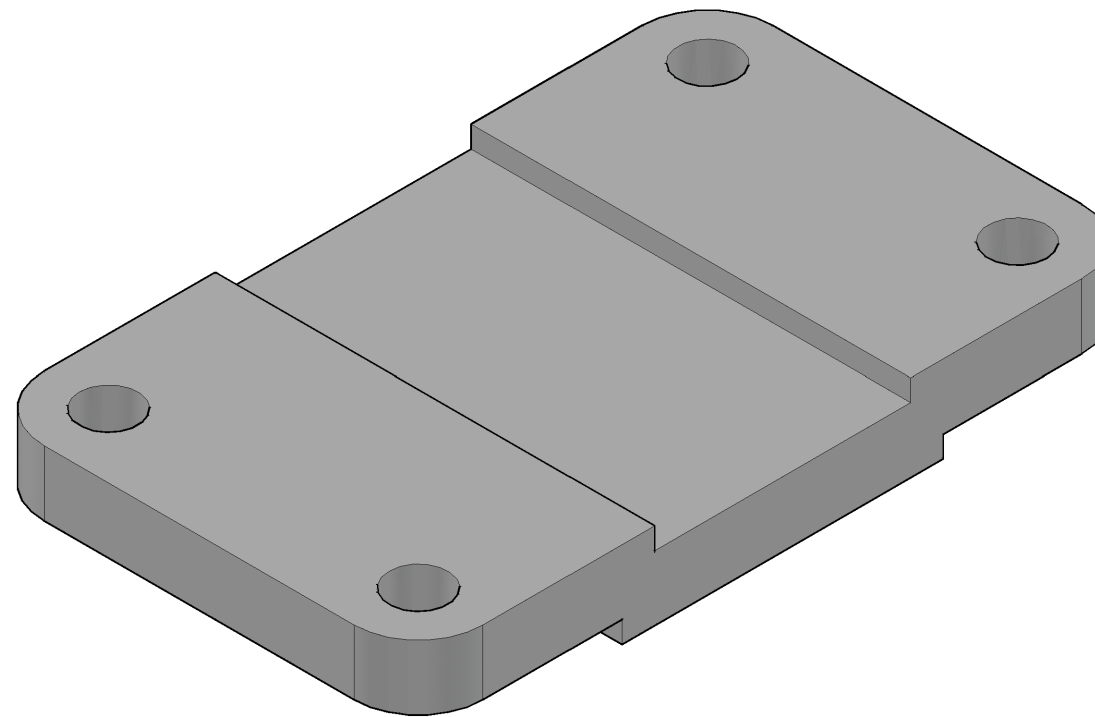
TOP PLATE
SCALE 1:1

METRIC

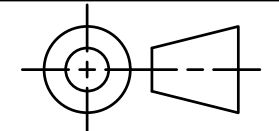
GENERAL NOTES:
FASTEN ASSEMBLY TO A 6mm STEEL PLATE
BY FOUR M10 X 40 LONG HEX HEAD BOLTS,
NUTS, AND LOCK WASHER

ROUNDS AND FILLETS R3

PARTS LIST		
ITEM	QTY.	PART NAME
1	1	TOP PLATE



DIGITAL DESIGN
GRAPHIC
TECHNOLOGY
WWW.DDGT.NET



TOLERANCE UNLESS SPECIFIED:
MILLIMETERS:
WHOLE NUMBERS = ±.5
X = ±.25
XX = ±.12
FRACTIONAL ±1/16"
ANGLES ±1 DEGREE
SURFACES $\sqrt{32}$

CLASS: DDGT120

ASSIGNMENT #: 60

AUTOCAD DRAWING NAME:
CASTER ASSEMBLY

FIG #: 9-51

MANAGER: G. STROMMEN

DRAFTER: G.SILVA

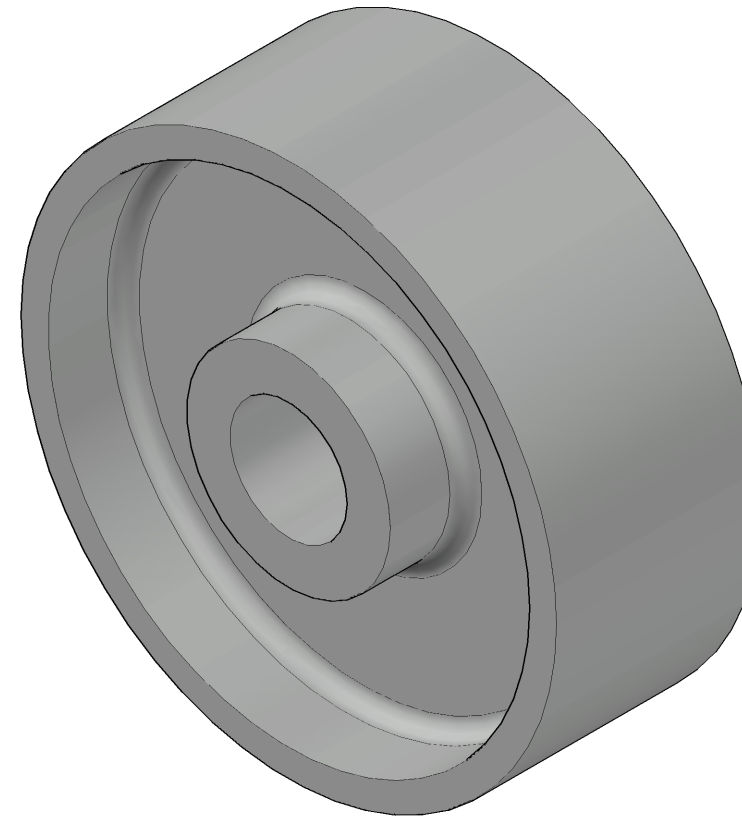
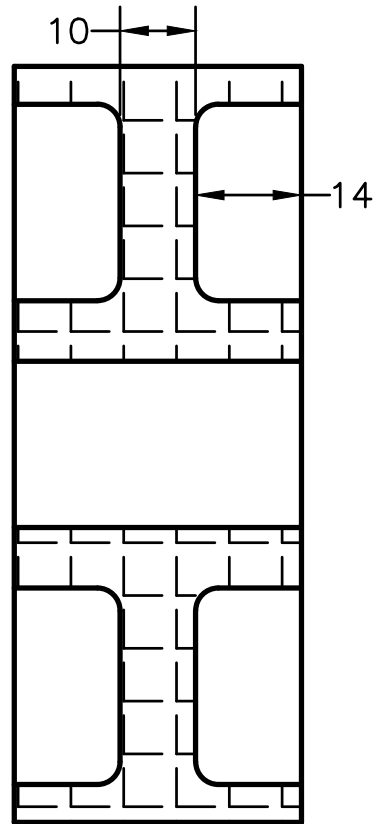
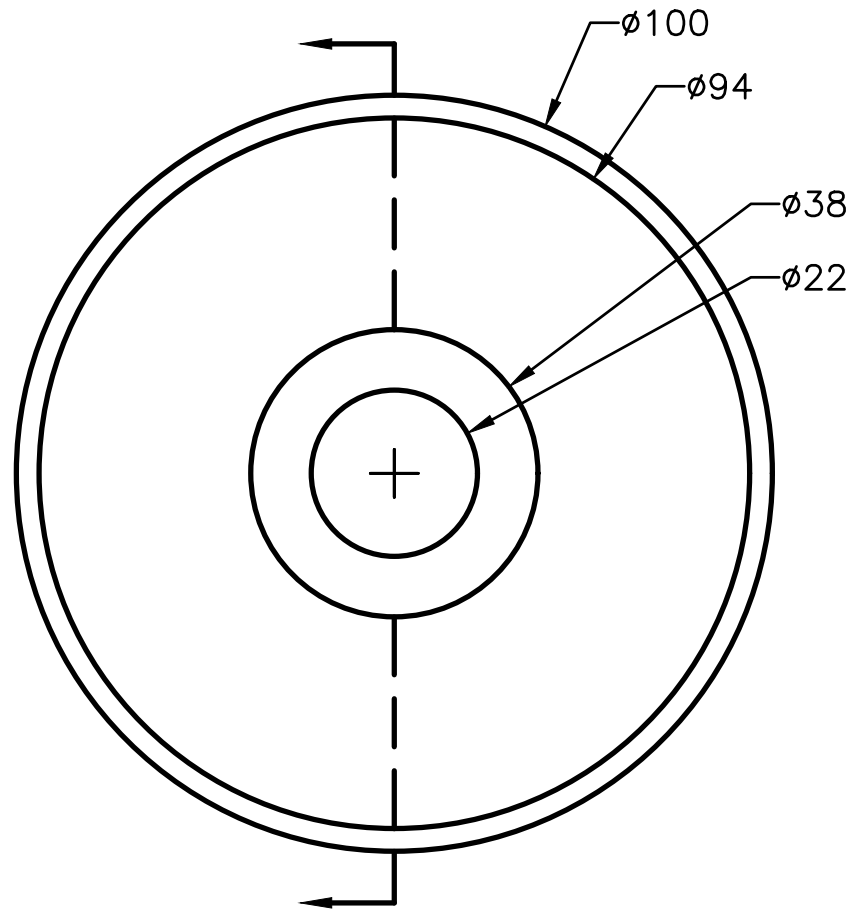
DATE: 5/15/2023

SCALE: AS NOTED

PAGE #: 2 OF 5

LEGEND:

- ∅ DIAMETER
- R RADIUS
- ° DEGREE
- SPOTFACE/COUNTERBORE



PARTS LIST		
ITEM	QTY.	PART NAME
2	1	WHEEL

DIGITAL DESIGN
GRAPHIC
TECHNOLOGY
WWW.DDGT.NET

WHEEL
SCALE 1:1

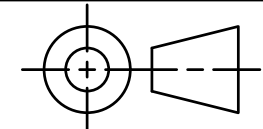
METRIC

GENERAL NOTES:
FASTEN ASSEMBLY TO A 6mm STEEL PLATE
BY FOUR M10 X 40 LONG HEX HEAD BOLTS,
NUTS, AND LOCK WASHER

ROUNDS AND FILLETS R3

LEGEND:

- ϕ DIAMETER
- R RADIUS
- DEGREE
- | | SPOTFACE/COUNTERBORE



TOLERANCE UNLESS SPECIFIED:
MILLIMETERS:
WHOLE NUMBERS = ± 0.5
X = ± 0.25
XX = ± 0.12
FRACTIONAL $\pm 1/16''$
ANGLES ± 1 DEGREE
SURFACES $\sqrt{32}$

CLASS: DDGT120

ASSIGNMENT #: 60

AUTOCAD DRAWING NAME:
CASTER ASSEMBLY

FIG #: 9-51

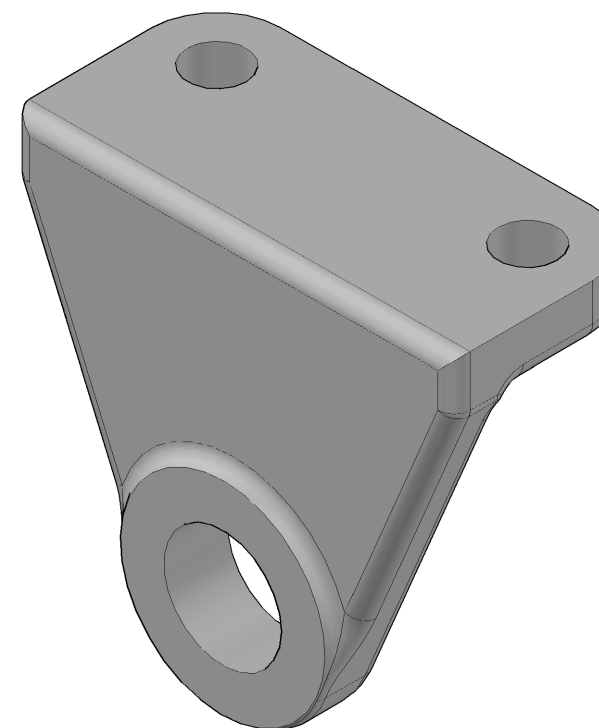
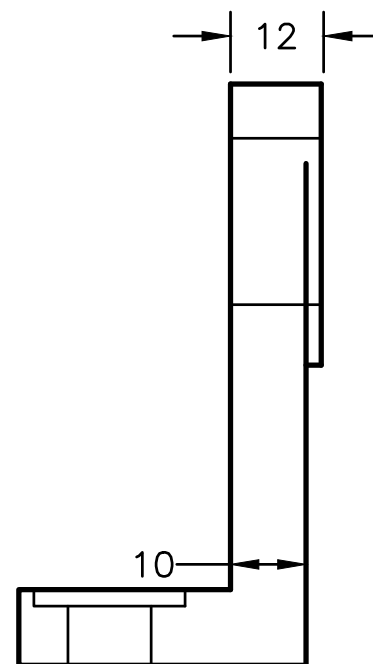
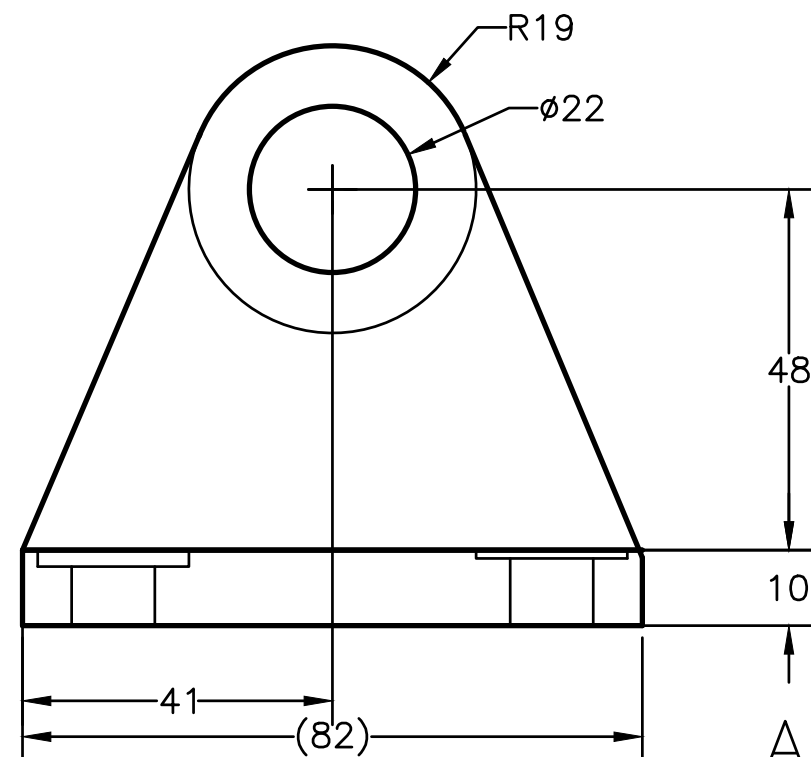
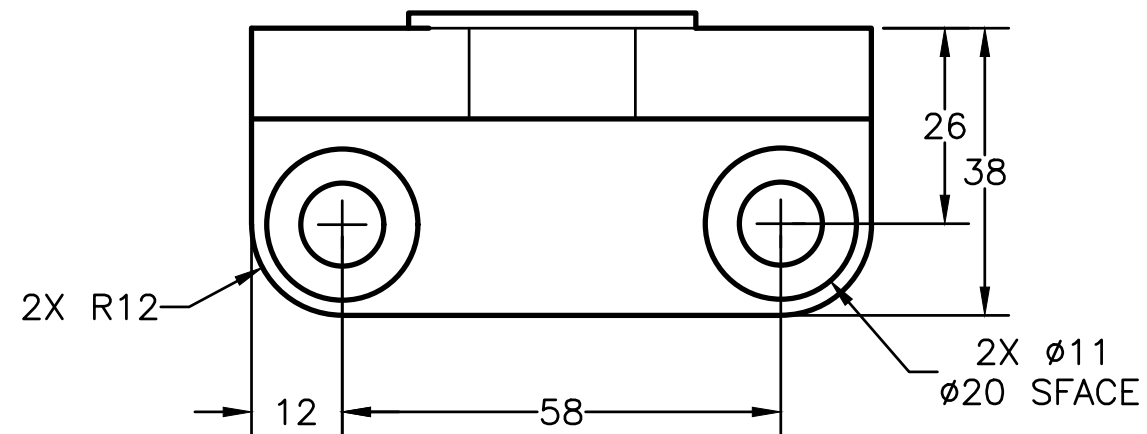
MANAGER: G. STROMMEN

DRAFTER: G.SILVA

DATE: 5/15/2023

SCALE: AS NOTED

PAGE #: 3 OF 5

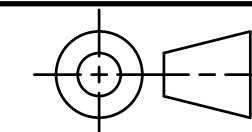


AXLE SUPPORT
SCALE 1:1

PARTS LIST		
ITEM	QTY.	PART NAME
3	2	AXLE SUPPORT

DIGITAL DESIGN
GRAPHIC
TECHNOLOGY

WWW.DDGT.NET



TOLERANCE UNLESS SPECIFIED:
MILLIMETERS:
WHOLE NUMBERS = ±.5
X = ±.25
XX = ±.12
FRACTIONAL ±1/16"
ANGLES ±1 DEGREE
SURFACES $\sqrt{32}$

CLASS: DDGT120

ASSIGNMENT #: 60

AUTOCAD DRAWING NAME:
CASTER ASSEMBLY

FIG #: 9-51

MANAGER: G. STROMMEN

DRAFTER: G.SILVA

DATE: 5/15/2023

SCALE: AS NOTED

PAGE #: 4 OF 5

METRIC

GENERAL NOTES:
FASTEN ASSEMBLY TO A 6mm STEEL PLATE
BY FOUR M10 X 40 LONG HEX HEAD BOLTS,
NUTS, AND LOCK WASHER

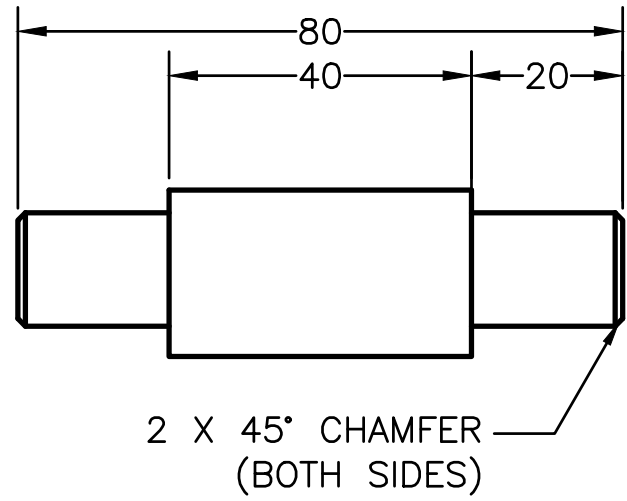
ROUNDS AND FILLETS R3

LEGEND:

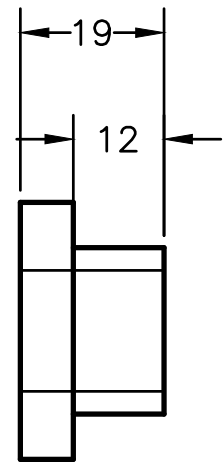
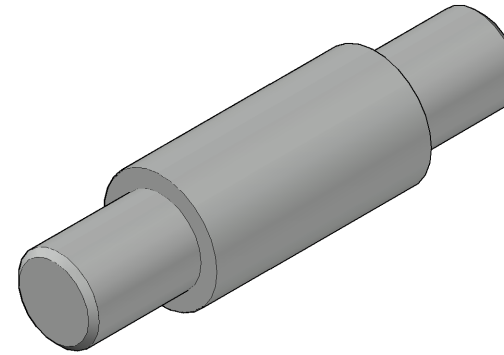
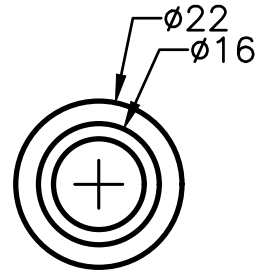
- ∅ DIAMETER
- R RADIUS
- ° DEGREE
- | | SPOTFACE/COUNTERBORE

PARTS LIST		
ITEM	QTY.	PART NAME
4	1	AXLE
5	2	BUSHING

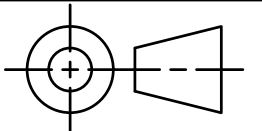
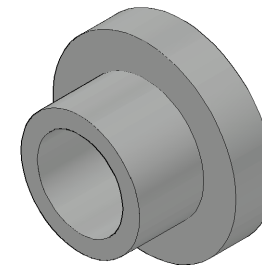
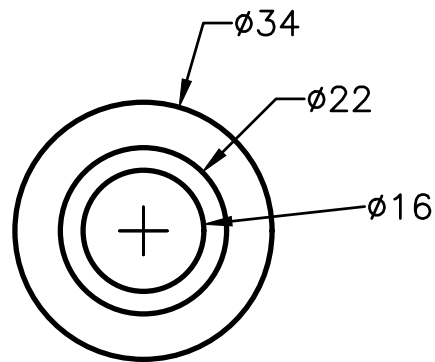
DIGITAL DESIGN
GRAPHIC
TECHNOLOGY
WWW.DDGT.NET



AXLE
SCALE 1:1



BUSHING
SCALE 1:1



TOLERANCE UNLESS SPECIFIED:
MILLIMETERS:
WHOLE NUMBERS = ±.5
X = ±.25
XX = ±.12
FRACTIONAL ±1/16"
ANGLES ±1 DEGREE
SURFACES ³²/_√

CLASS: DDGT120

ASSIGNMENT #: 60

AUTOCAD DRAWING NAME:
CASTER ASSEMBLY

FIG #: 9-51

MANAGER: G. STROMMEN

DRAFTER: G.SILVA

DATE: 5/15/2023

SCALE: AS NOTED

PAGE #: 5 OF 5

METRIC

GENERAL NOTES:
FASTEN ASSEMBLY TO A 6mm STEEL PLATE
BY FOUR M10 X 40 LONG HEX HEAD BOLTS,
NUTS, AND LOCK WASHER

ROUNDS AND FILLETS R3

LEGEND:

- ∅ DIAMETER
- R RADIUS
- DEGREE
- | | SPOTFACE/COUNTERBORE