

GENERAL NOTES:

FASTEN ASSEMBLY TO A 6mm STEEL PLATE BY FOUR M 10 X 40mm LG HEX HD BOLDS, NUTS AND LOCK WASHER

ROUND AND FILLETS R 3

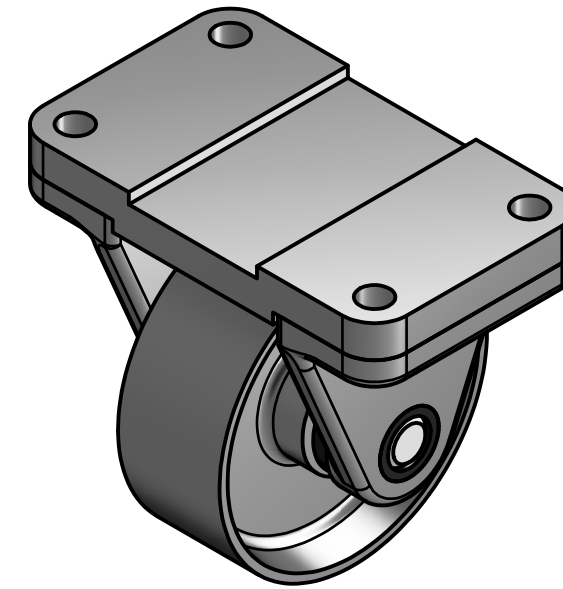
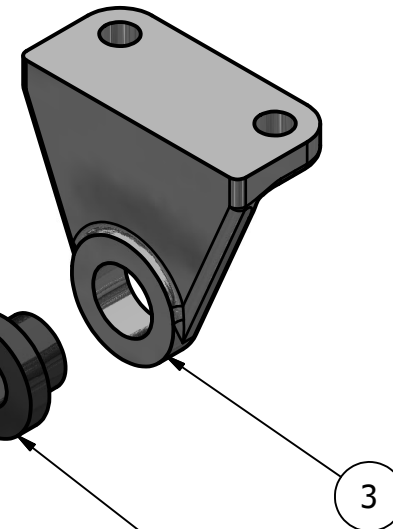
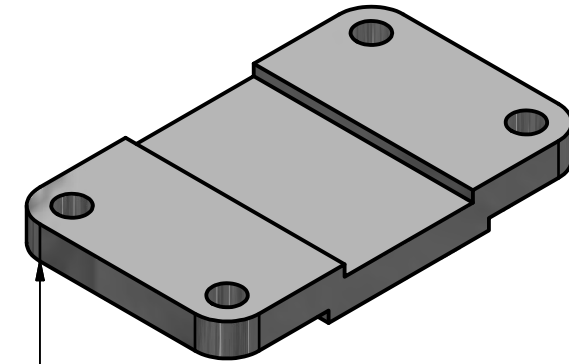
FIT	BETWEEN PARTS
H8/f7	4 AND 5
H7/p6	3 AND 5
H8/f7	2 AND 4

PARTS LIST			
ITEM	QTY	PART NUMBER	MATERIAL
1	1	TOP PLATE	IRON, MALLEABLE
2	1	WHEEL	IRON, MALLEABLE
3	2	AXLE SUPPORT	IRON, MALLEABLE
4	1	AXLE	STEEL AISI 1020 107 HR
5	2	BUSHING	BRONZE

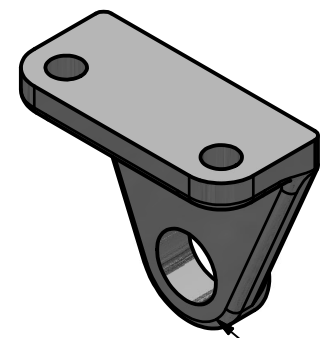
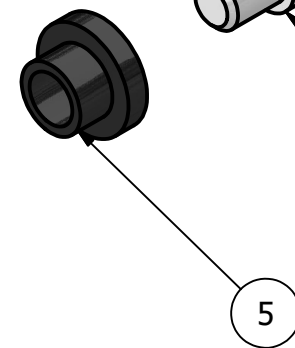
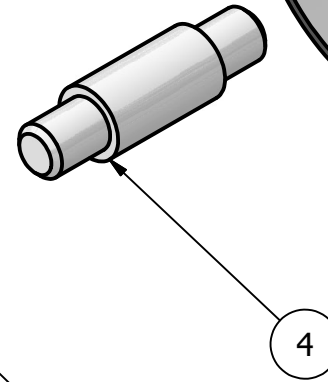
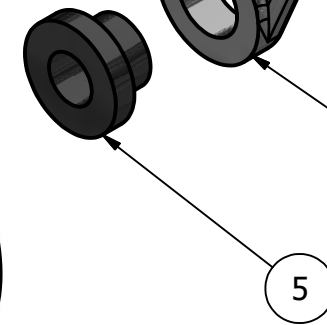
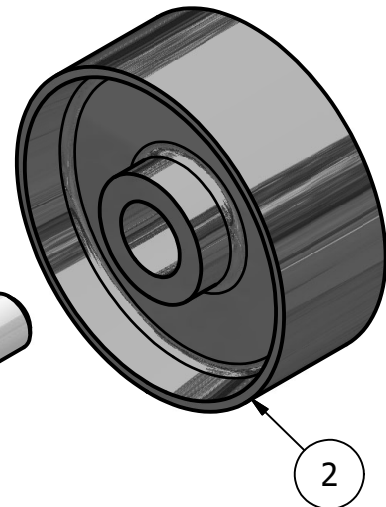


DIGITAL DESIGN
GRAPHIC
TECHNOLOGY

WWW.DDGT.NET



CASTER ASSEMBLY
SCALE 1 / 2

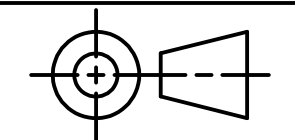


CASTER EXPLODED ASSEMBLY
SCALE 1 / 2

METRIC

LEGEND:

- ∅ DIAMETER
- R RADIUS
- ° DEGREE
- COUNTERBORE/
SPOTFACE



TOLERANCE UNLESS SPECIFIED:
DECIMAL INCHES:
X = ±.020
XX = ±.010
XXX = ±.005
FRACTIONAL ±1/64"
ANGLES ±1 DEGREE
SURFACES ³² ✓

CLASS: DDGT 120

ASSIGNMENT #: 67

INVENTOR DRAWING NAME:
CASTER

FIG #: 9-51

MANAGER: G. STROMMEN

DRAFTER: G.SILVA

DATE: 11/10/2022

SCALE: AS NOTED

PAGE #: 1 OF 3

GENERAL NOTES:

FASTEN ASSEMBLY TO A 6mm STEEL PLATE BY FOUR M 10 X 40mm LG HEX HD BOLDS, NUTS AND LOCK WASHER

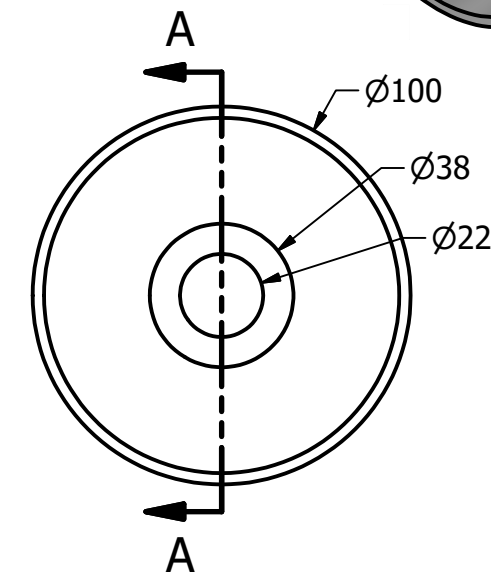
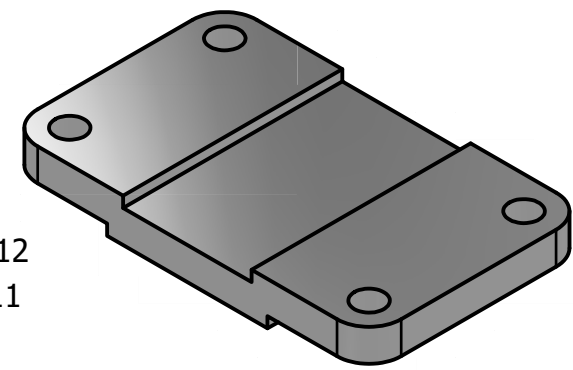
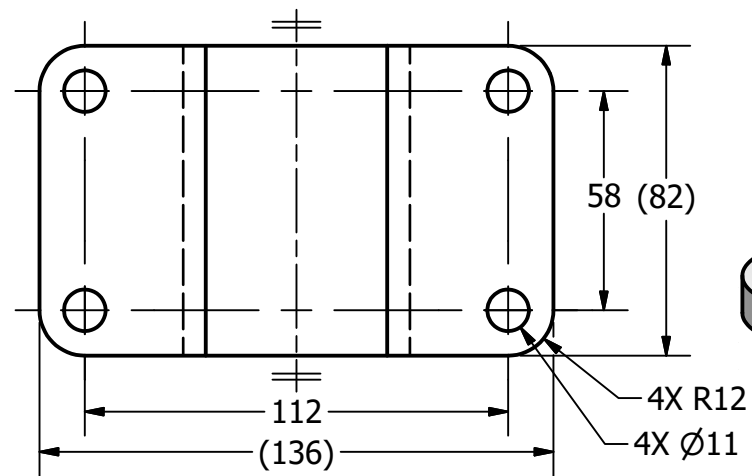
ROUND AND FILLETS R 3

PARTS LIST		
ITEM	QTY	PART NUMBER
1	1	TOP PLATE
2	1	WHEEL

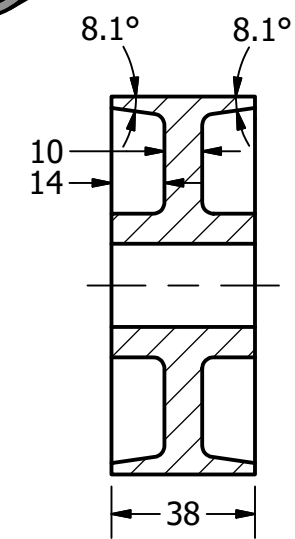


DIGITAL DESIGN
GRAPHIC
TECHNOLOGY

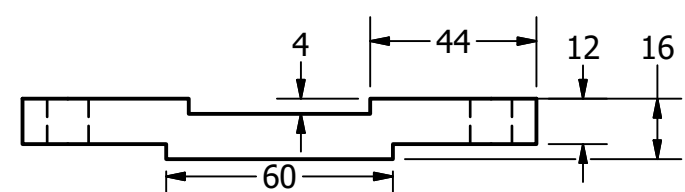
WWW.DDGT.NET



WHEEL
SCALE 1 / 2



SECTION A-A
SCALE 1 / 2

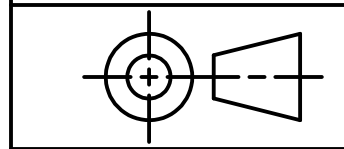


TOP PLATE
SCALE 1 / 2

METRIC

LEGEND:

- Ø DIAMETER
- R RADIUS
- ° DEGREE
- COUNTERBORE/
SPOTFACE



TOLERANCE UNLESS SPECIFIED:
DECIMAL INCHES:
X = ±.020
XX = ±.010
XXX = ±.005
FRACTIONAL ±1/64"
ANGLES ±1 DEGREE
SURFACES 32 ✓

CLASS: DDGT 120

ASSIGNMENT #: 67

INVENTOR DRAWING NAME:
CASTER

FIG #: 9-51

MANAGER: G. STROMMEN

DRAFTER: G.SILVA

DATE: 11/10/2022

SCALE: AS NOTED

PAGE #: 2 OF 3

GENERAL NOTES:

FASTEN ASSEMBLY TO A 6mm STEEL PLATE BY FOUR M 10 X 40mm LG HEX HD BOLDS, NUTS AND LOCK WASHER

ROUND AND FILLETS R 3

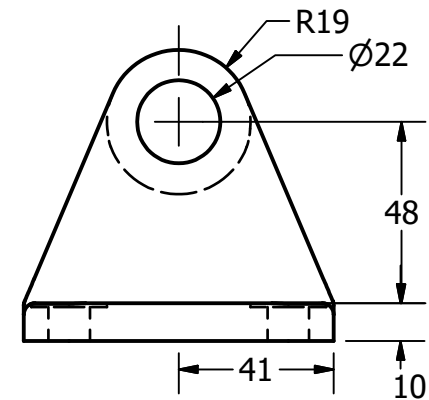
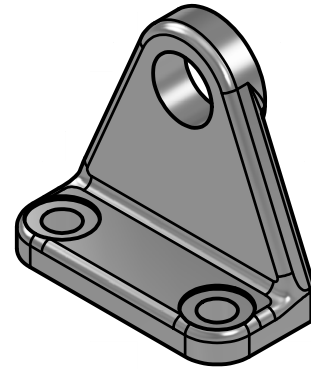
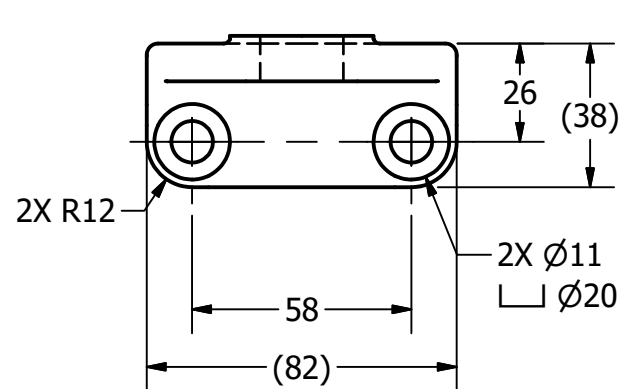
PARTS LIST

ITEM	QTY	PART NUMBER
3	2	AXLE SUPPORT
4	1	AXLE
5	2	BUSHING

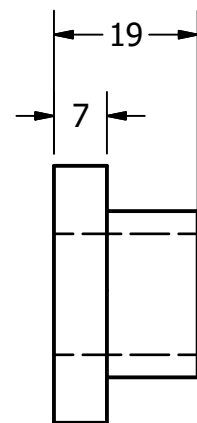
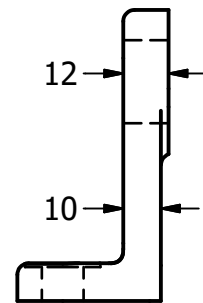


DIGITAL DESIGN
GRAPHIC
TECHNOLOGY

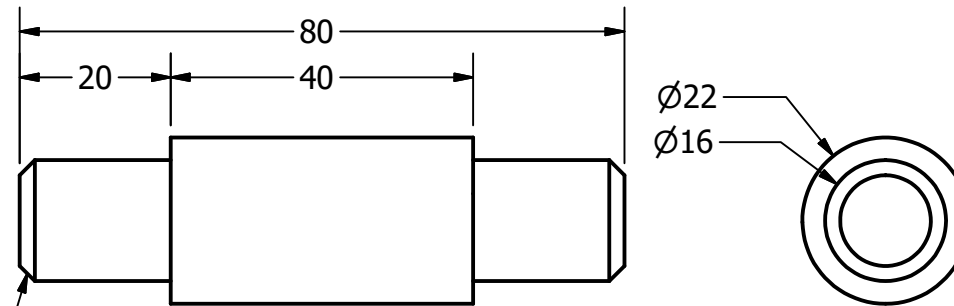
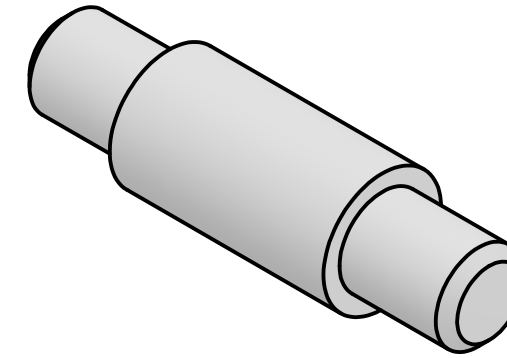
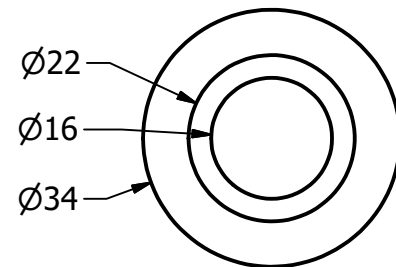
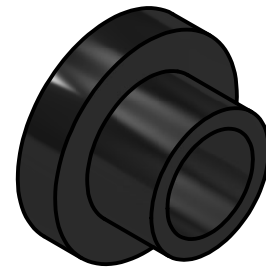
WWW.DDGT.NET



AXLE SUPPORT
SCALE 1 / 2



BUSHING
SCALE 1 : 1



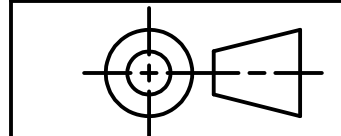
2 X 45.0° CHAMFER
(BOTH SIDES)

AXLE
SCALE 1 : 1

METRIC

LEGEND:

- Ø DIAMETER
- R RADIUS
- ° DEGREE
- COUNTERBORE/
SPOTFACE



TOLERANCE UNLESS SPECIFIED:
DECIMAL INCHES:
X = ±.020
XX = ±.010
XXX = ±.005
FRACTIONAL ±1/64"
ANGLES ±1 DEGREE
SURFACES 32 ✓

CLASS: DDGT 120

ASSIGNMENT #: 67

INVENTOR DRAWING NAME:

CASTER

FIG #: 9-51

MANAGER: G. STROMMEN

DRAFTER: G.SILVA

DATE: 11/10/2022

SCALE: AS NOTED

PAGE #: 3 OF 3