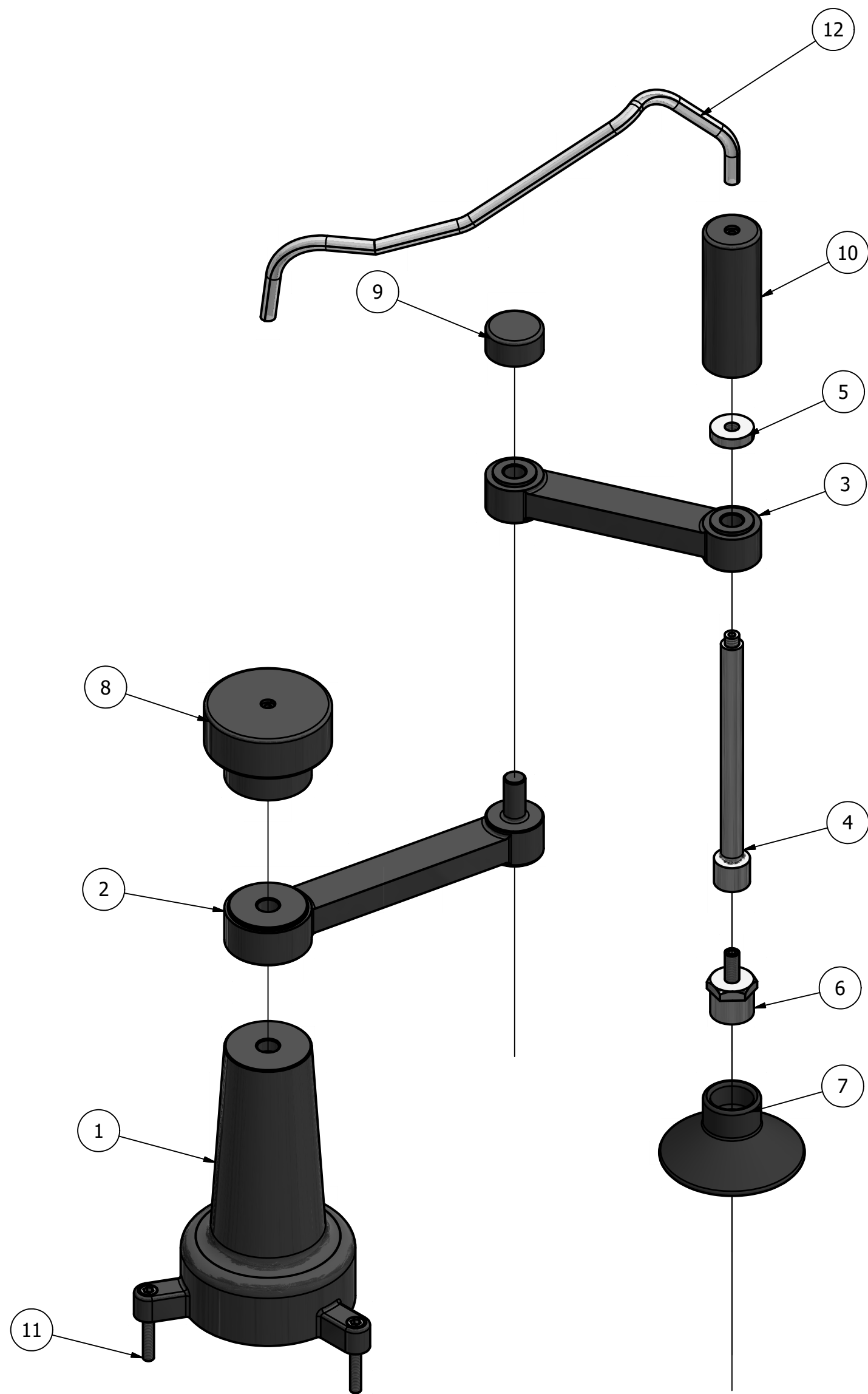
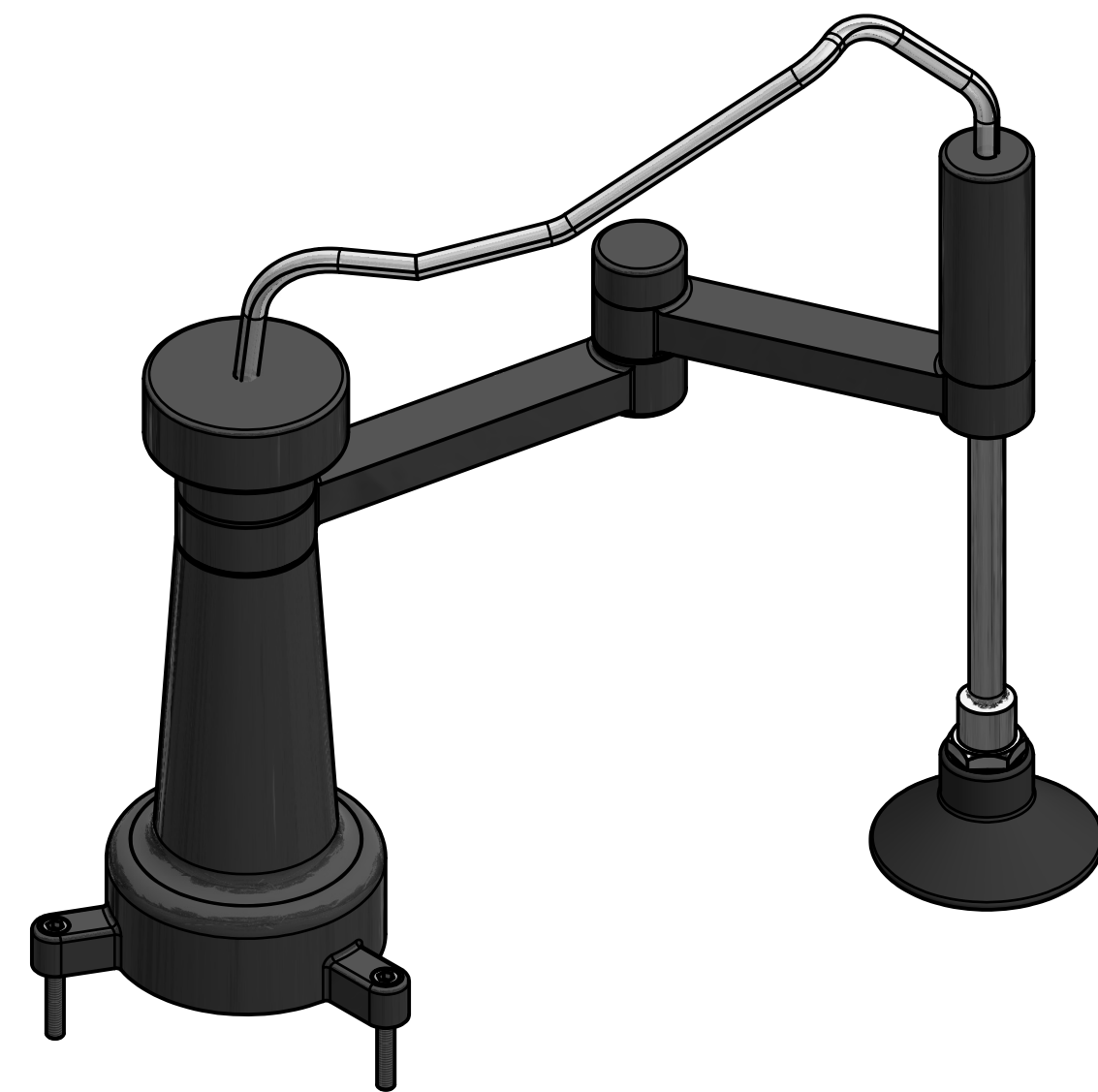


GENERAL NOTES:  
ALL FILLETS .06 UNLESS OTHERWISE NOTED.  
ALL CHAMFERS .02 X 45 UNLESS OTHERWISE NOTED.

PARTS LIST				
ITEM	QTY	PART NUMBER	MATERIAL	DESCRIPTION
1	1	BASE	ALUMINUM	
2	1	ARM E-01	ALUMINUM	
3	1	ARM E-02	ALUMINUM	
4	1	SLIDING TUBE SHAFT	STEEL	
5	1	SLIDING TUBE CAP	STEEL	
6	1	VACUUM CONNECTOR	STEEL	
7	1	VACUUM CUP	RUBBER	
8	1	BASE CAP	ALUMINUM	
9	1	ELBOW CAP	ALUMINUM	
10	1	VACUUM CAP	ALUMINUM	
11	3	HEXAGON SOCKET HEAD CAP SCREW	STEEL	ANSI B18.3 - 10-32 UNF - 1.25 HS HCS
12	1	VACUUM TUBE	RUBBER, SILICONE	INNER $\phi$ .125" OUTER $\phi$ .25" LENGTH 8.5"



ROBOTIC ARM EXPLODED ASSEMBLY  
SCALE 1 / 2



ROBOTIC ARM ASSEMBLY  
SCALE 1 / 2

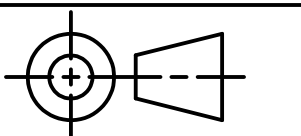
### LEGEND:

- $\phi$  DIAMETER
- R RADIUS
- $^\circ$  DEGREES
- $\nabla$  DEPTH
- $\square$  COUNTERBORE

JENNIFER BARKER  
DRAFTER  
NAPA, CA  
415.819.0305  
J.B.DESIGN.NAPA@GMAIL.COM

J.B. DESIGN

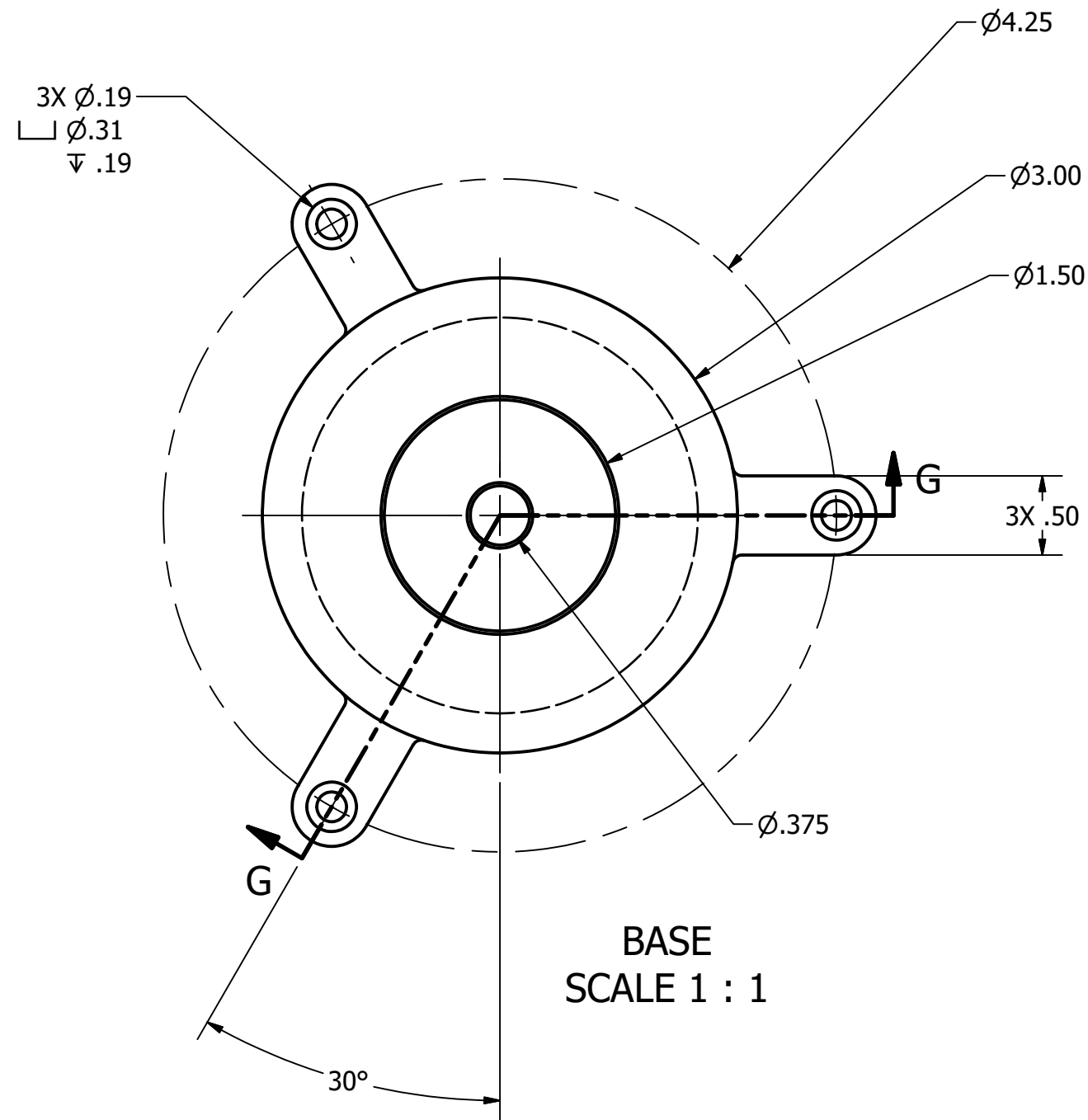
WWW.DDGT.NET/STUDENTPAGES/JBARKER/



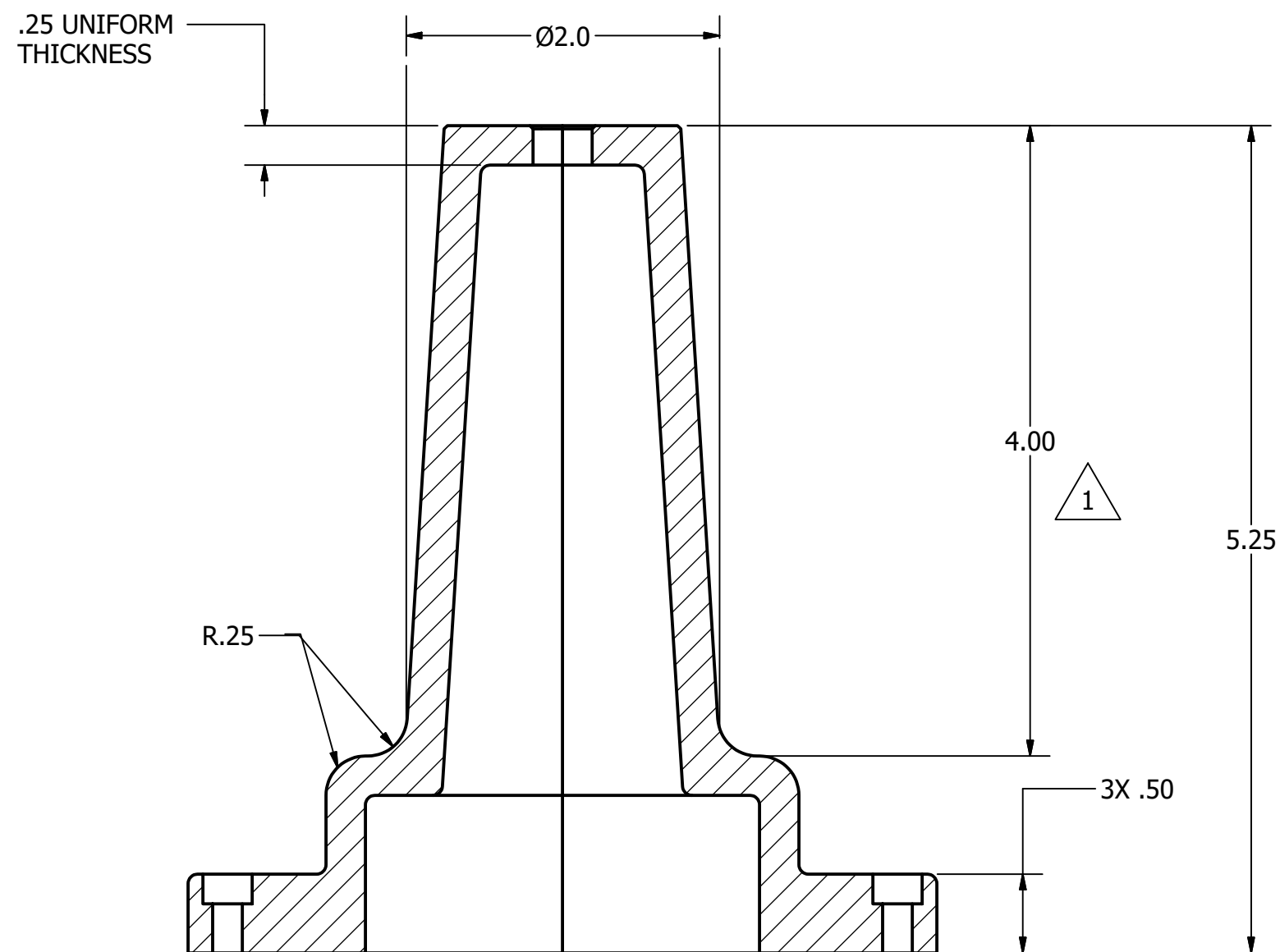
TOLERANCES UNLESS SPECIFIED:  
DECIMAL INCHES:  
X =  $\pm$ .020  
XX =  $\pm$ .010  
XXX =  $\pm$ .005  
FRACTIONAL:  $\pm$ 1/64"  
ANGLES  $\pm$ 1 DEGREE  
SURFACES  $\surd$

REV	SHEET	DATE	DESCRIPTION	APPROVED
4	4	2/24/2021	SLIDING TUBE SHAFT LENGTH 4.19" TO 5.19"	G. STROMMEN
3	3	2/24/2021	ARM E-02 LENGTH 3.50" TO 4.00"	G. STROMMEN
2	2	2/24/2021	ARM E-01 LENGTH 4.50" TO 5.00"	G. STROMMEN
1	2	2/24/2021	BASE HEIGHT 3.00" TO 4.00"	G. STROMMEN
REV	SHEET	DATE	DESCRIPTION	APPROVED
REVISION HISTORY				

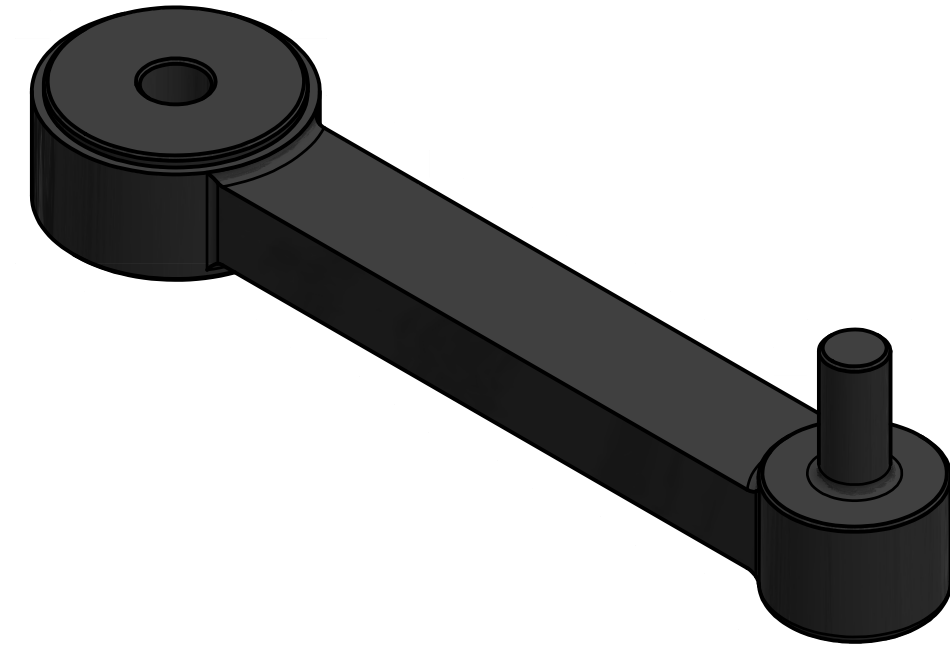
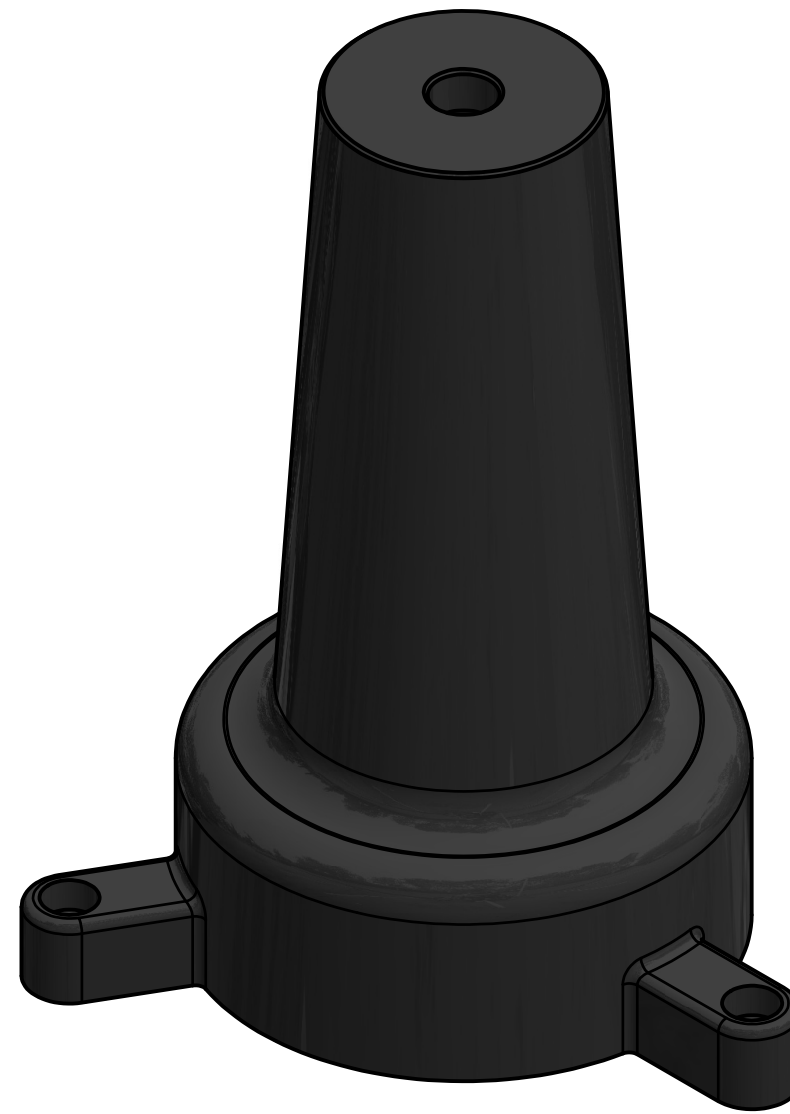
COURSE:	DDGT 241
INVENTOR DRAWING NAME:	ROBOTIC ARM
FIG #:	10-58
DRAFTER:	J. BARKER
DATE:	2/24/2021
SCALE:	AS NOTED
PAGE #:	1 OF 4



BASE  
SCALE 1 : 1



SECTION G-G  
SCALE 1 : 1



PARTS LIST		
ITEM	QTY	PART NUMBER
1	1	BASE
2	1	ARM E-01

**DDGT**

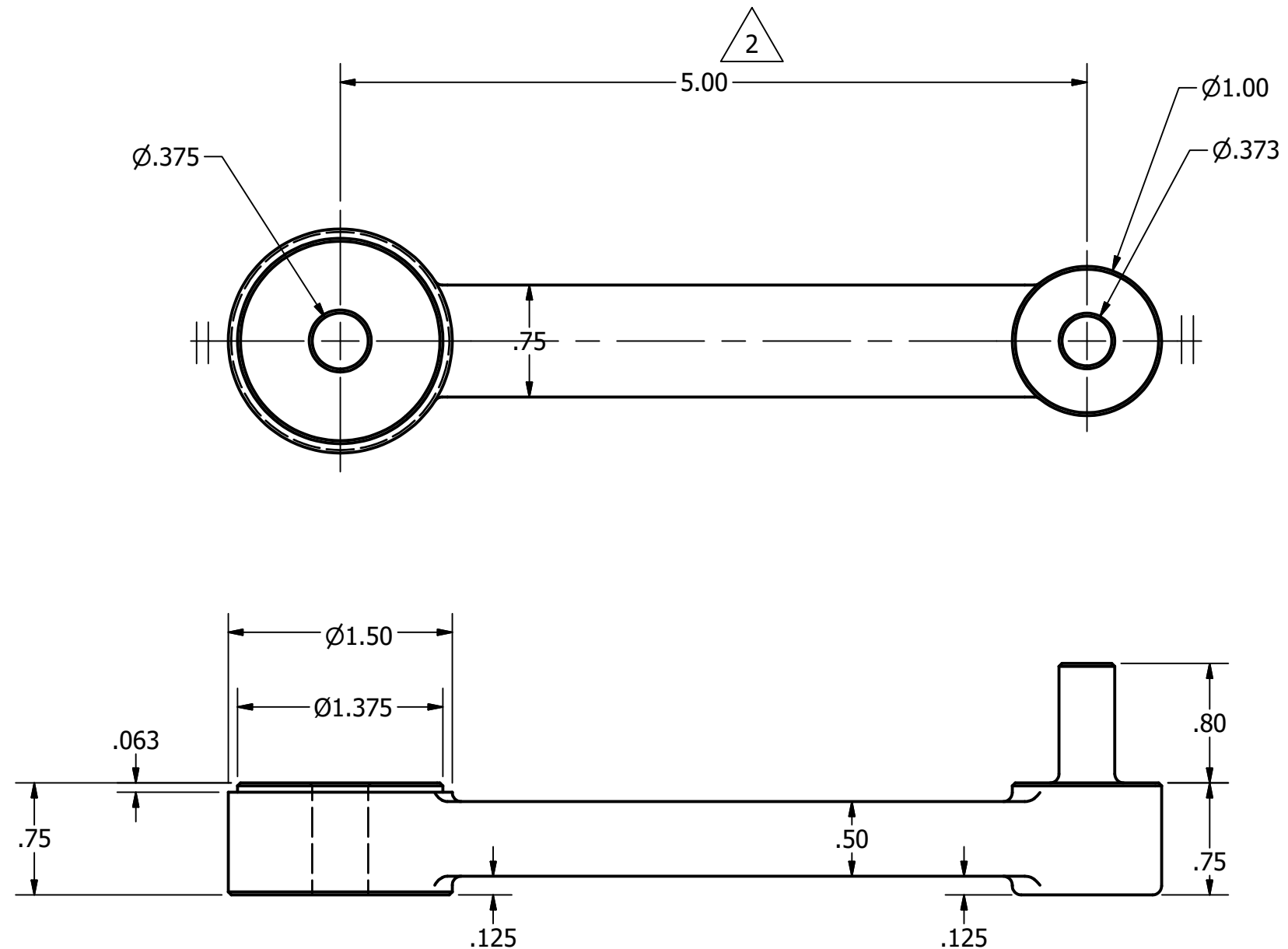
DIGITAL DESIGN  
GRAPHICS  
TECHNOLOGY

WWW.DDGT.NET

GENERAL NOTES:  
ALL FILLETS .06 UNLESS OTHERWISE NOTED.  
ALL CHAMFERS .02 X 45 UNLESS OTHERWISE NOTED.

**LEGEND:**

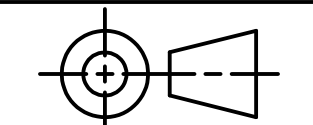
- Ø DIAMETER
- R RADIUS
- ° DEGREES
- ∇ DEPTH
- ┌ COUNTERBORE



ARM E-01  
SCALE 1 : 1

JENNIFER BARKER  
DRAFTER  
NAPA, CA  
415.819.0305  
J.B.DESIGN.NAPA@GMAIL.COM

J.B. DESIGN



TOLERANCES UNLESS SPECIFIED:  
DECIMAL INCHES:  
X = ±.020  
XX = ±.010  
XXX = ±.005  
FRACTIONAL: ±1/64"  
ANGLES ±1 DEGREE  
SURFACES 32

COURSE: DDGT 241

INVENTOR DRAWING NAME:  
ROBOTIC ARM

FIG #: 10-58

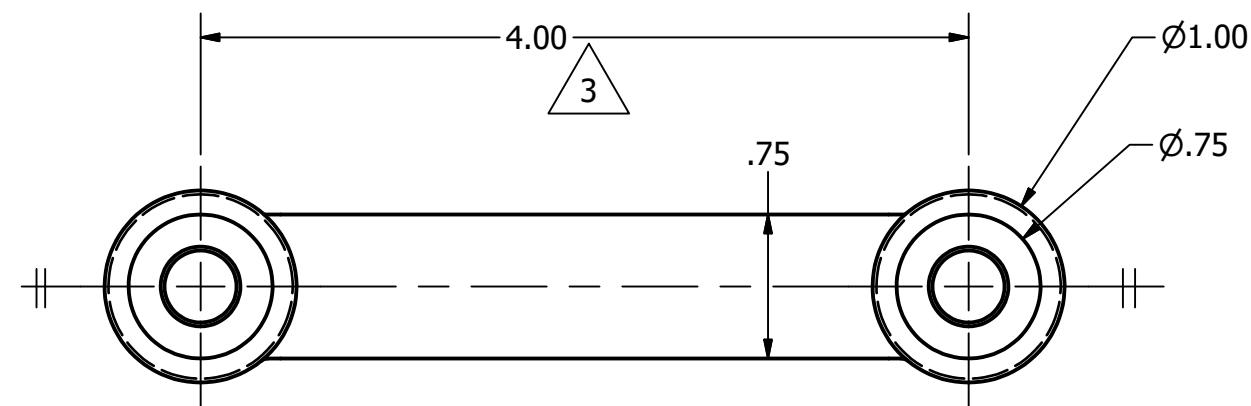
DRAFTER: J. BARKER

DATE: 2/24/2021

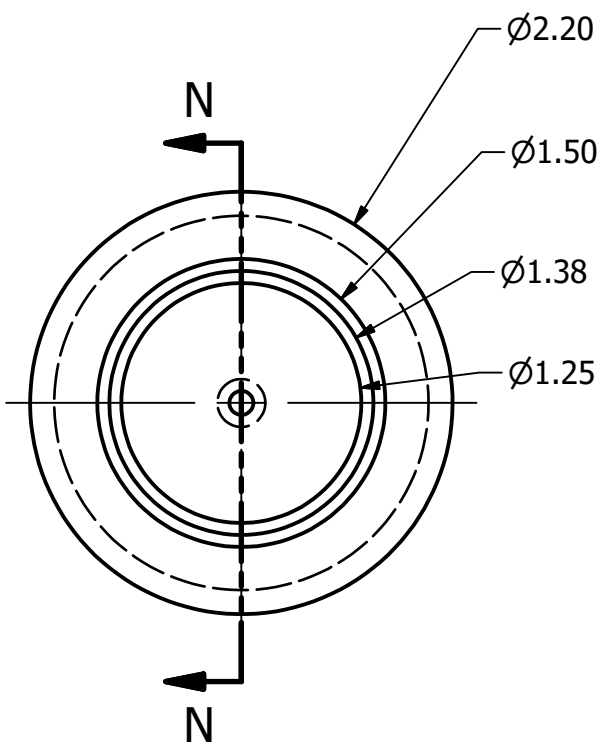
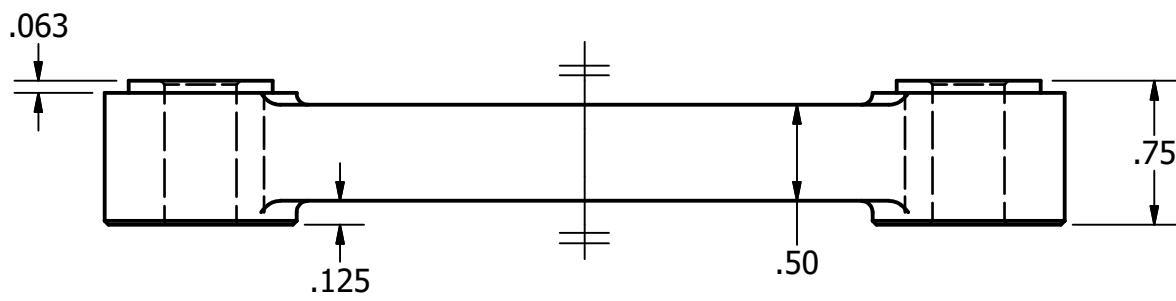
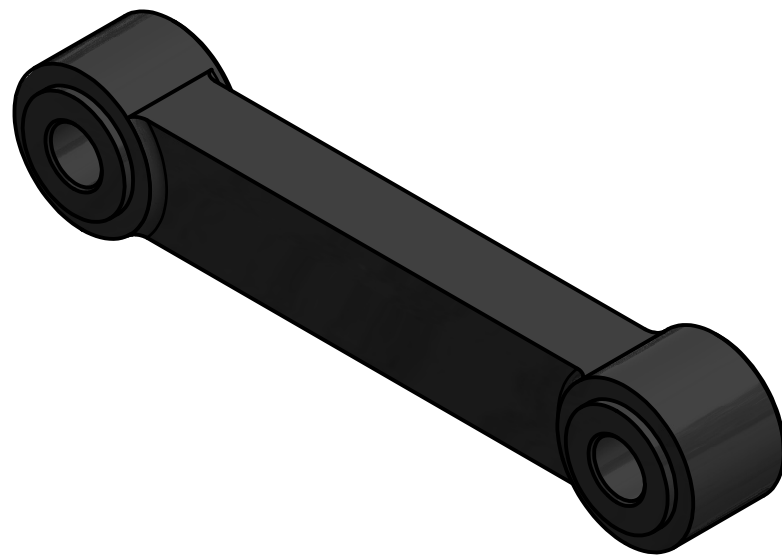
SCALE: AS NOTED

PAGE #: 2 OF 4

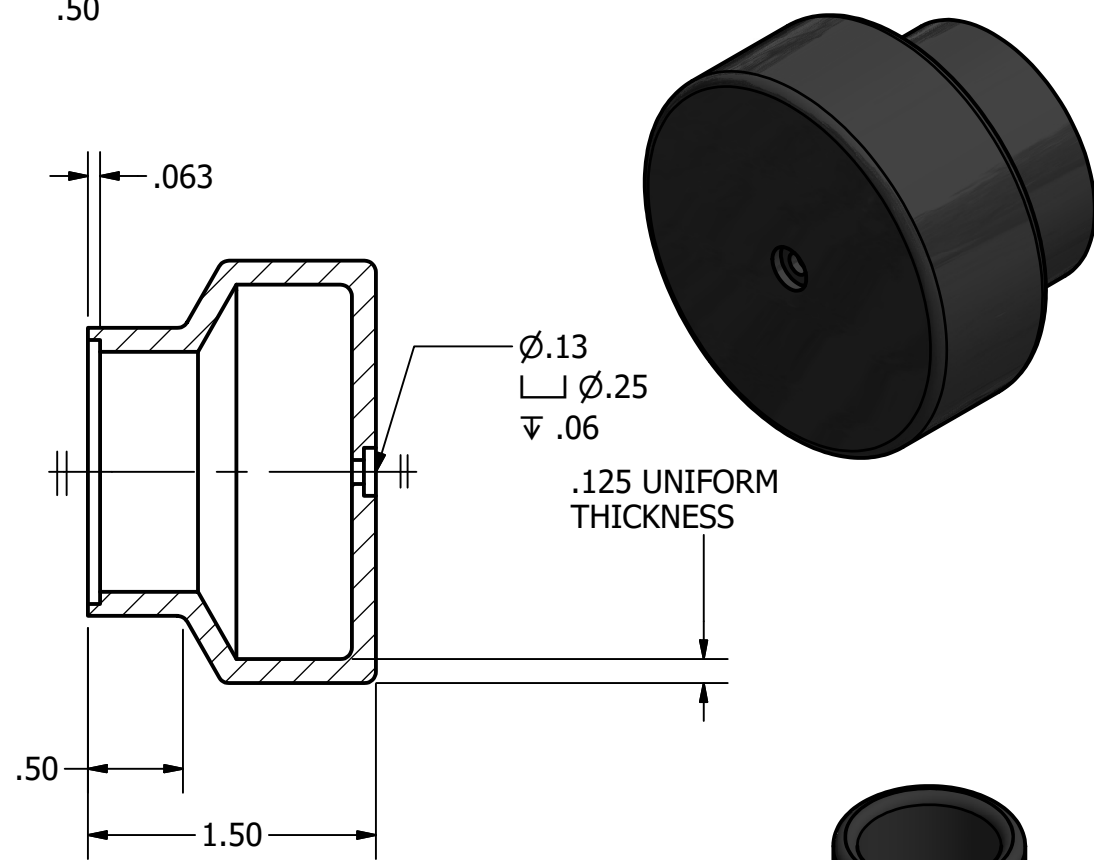
REVISION HISTORY			
REV	DATE	DESCRIPTION	APPROVED
2	2/24/2021	ARM E-01 LENGTH 4.50" TO 5.00"	G. STROMMEN
1	2/24/2021	BASE HEIGHT 3.00" TO 4.00"	G. STROMMEN



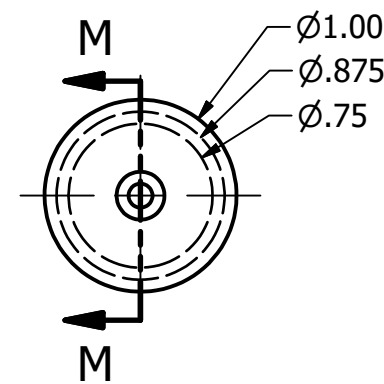
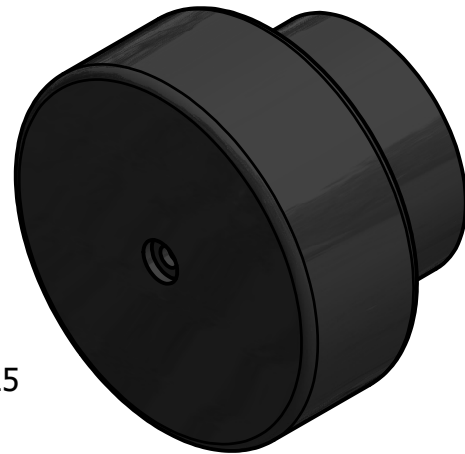
ARM E-02  
SCALE 1 : 1



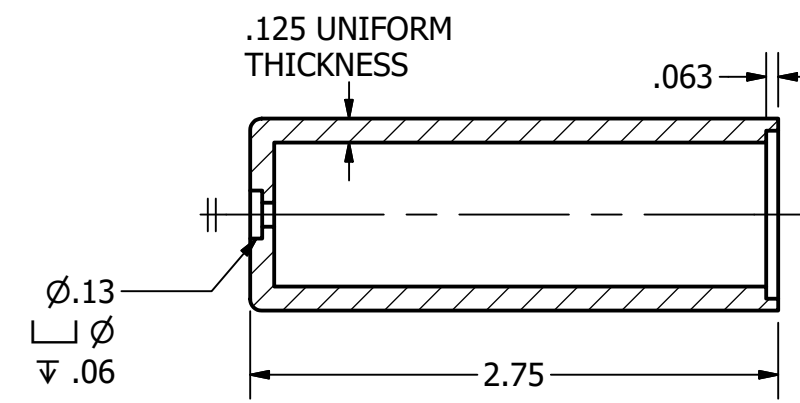
BASE CAP  
SCALE 1 : 1



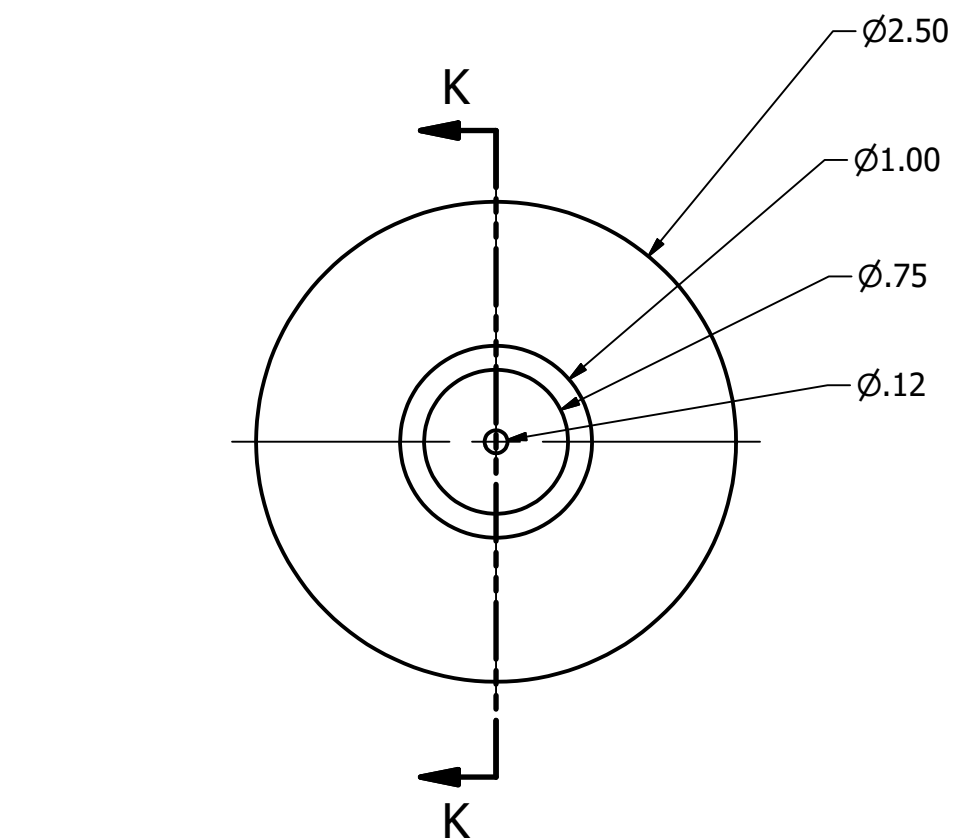
SECTION N-N  
SCALE 1 : 1



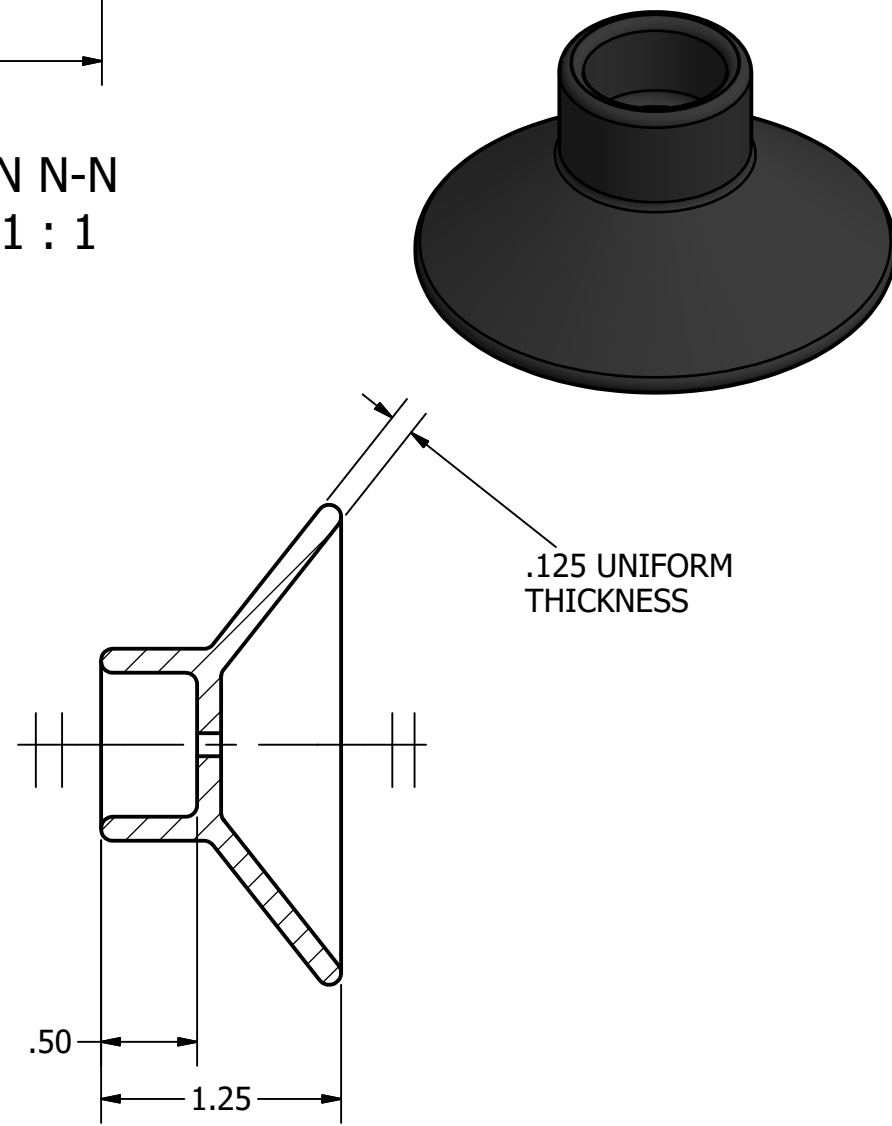
VACUUM CAP  
SCALE 1 : 1



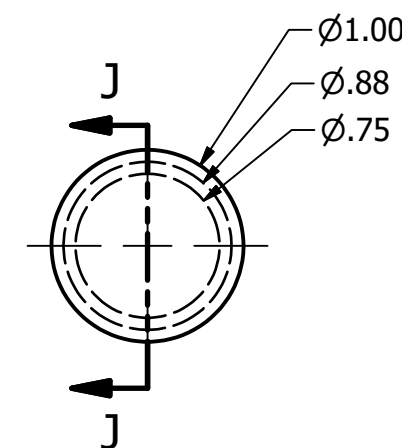
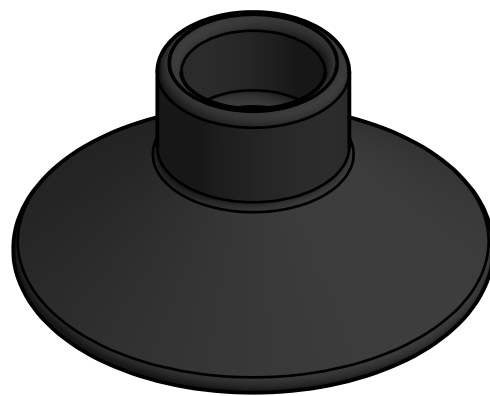
SECTION M-M  
SCALE 1 : 1



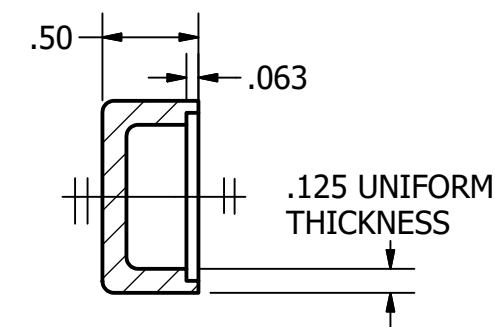
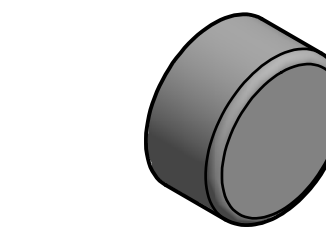
VACUUM CUP  
SCALE 1 : 1



SECTION K-K  
SCALE 1 : 1



ELBOW CAP  
SCALE 1 : 1



SECTION J-J  
SCALE 1 : 1

PARTS LIST		
ITEM	QTY	PART NUMBER
3	1	ARM E-02
7	1	VACUUM CUP
8	1	BASE CAP
9	1	ELBOW CAP
10	1	VACUUM CAP



DIGITAL DESIGN  
GRAPHICS  
TECHNOLOGY

WWW.DDGT.NET

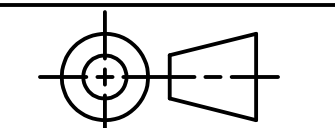
GENERAL NOTES:  
ALL FILLETS .06 UNLESS  
OTHERWISE NOTED.  
ALL CHAMFERS .02 X 45  
UNLESS OTHERWISE  
NOTED.

**LEGEND:**

- Ø DIAMETER
- R RADIUS
- ° DEGREES
- ∇ DEPTH
- └ COUNTERBORE

JENNIFER BARKER  
DRAFTER  
NAPA, CA  
415.819.0305  
J.B.DESIGN.NAPA@GMAIL.COM

DESIGN



TOLERANCES UNLESS SPECIFIED:  
DECIMAL INCHES:  
X = ±.020  
XX = ±.010  
XXX = ±.005  
FRACTIONAL ±1/64"  
ANGLES ±1 DEGREE  
SURFACES 32

COURSE: DDGT 241

INVENTOR DRAWING NAME:  
ROBOTIC ARM

FIG #: 10-58

DRAFTER: J. BARKER

DATE: 2/24/2021

SCALE: AS NOTED

PAGE #: 3 OF 4

REVISION HISTORY			
REV	DATE	DESCRIPTION	APPROVED
3	2/24/2021	ARM E-02 LENGTH 3.50" TO 4.00"	G. STROMMEN

PARTS LIST		
ITEM	QTY	PART NUMBER
6	1	VACUUM CONNECTOR
4	1	SLIDING TUBE SHAFT
5	1	SLIDING TUBE CAP



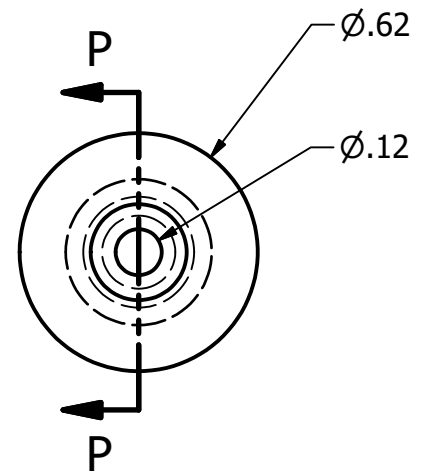
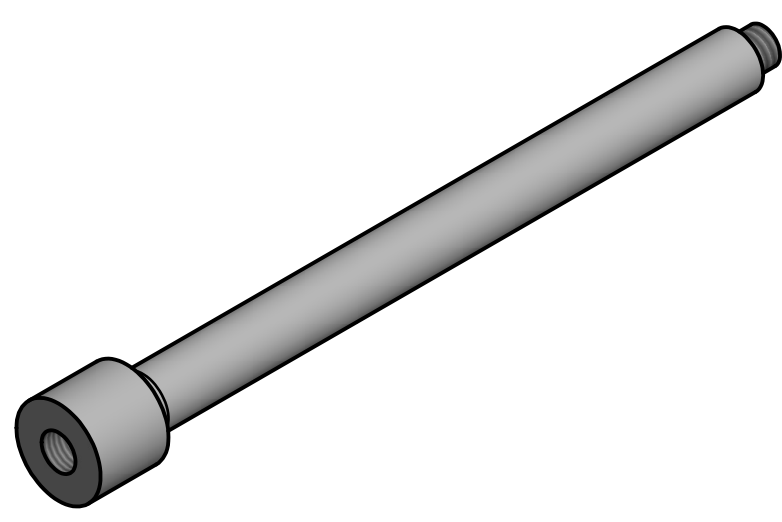
DIGITAL DESIGN  
GRAPHICS  
TECHNOLOGY

WWW.DDGT.NET

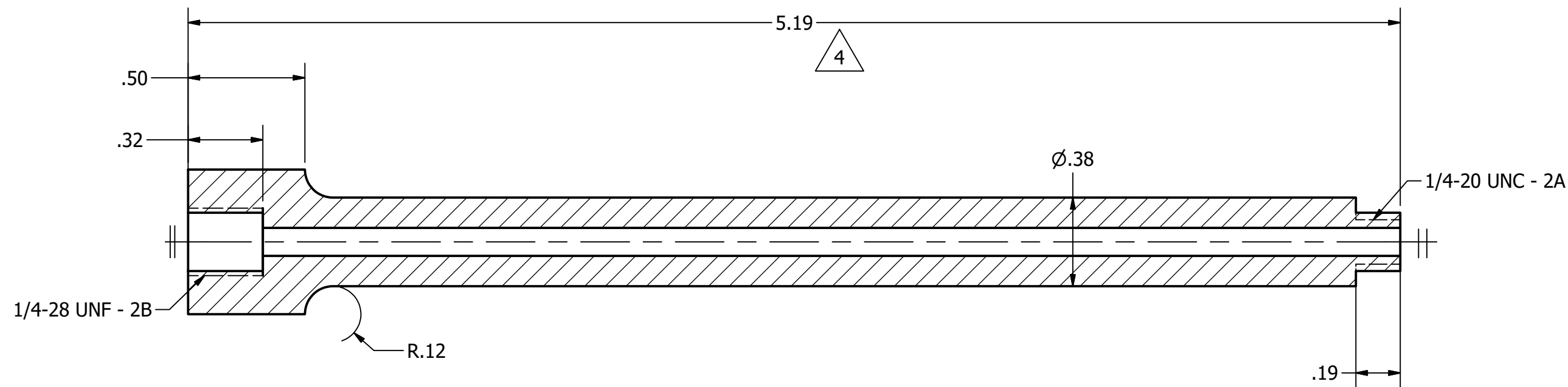
GENERAL NOTES:  
ALL FILLETS .06 UNLESS OTHERWISE NOTED.  
ALL CHAMFERS .02 X 45 UNLESS OTHERWISE NOTED.

**LEGEND:**

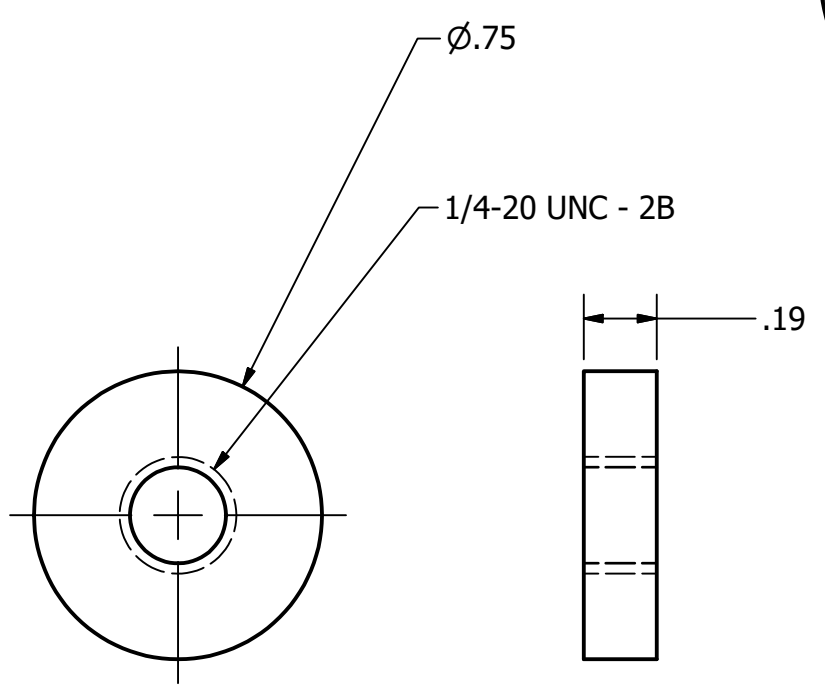
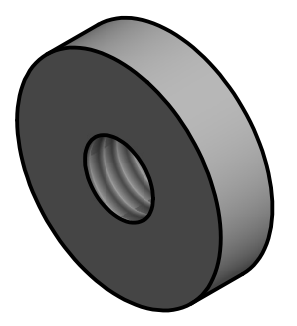
∅	DIAMETER
R	RADIUS
°	DEGREES
∇	DEPTH
□	COUNTERBORE



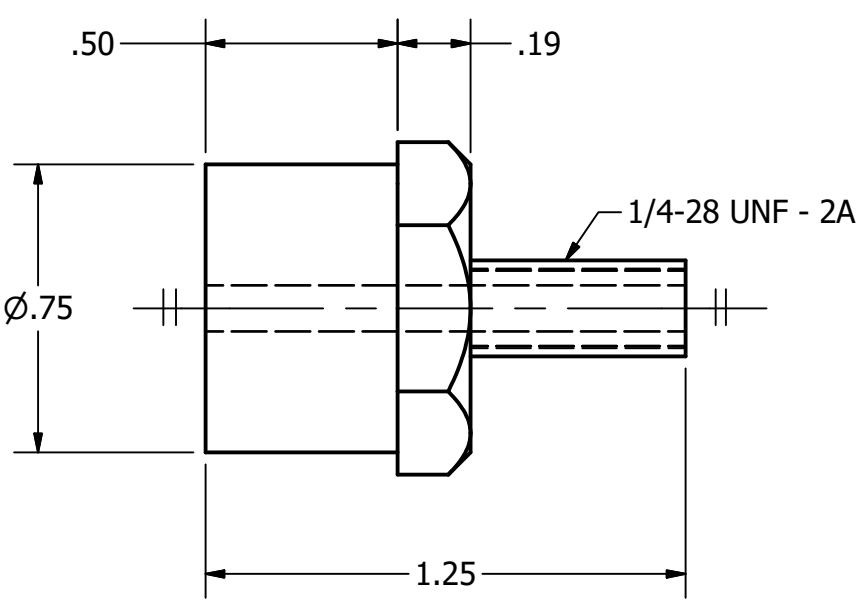
SLIDING TUBE SHAFT  
SCALE 2 : 1



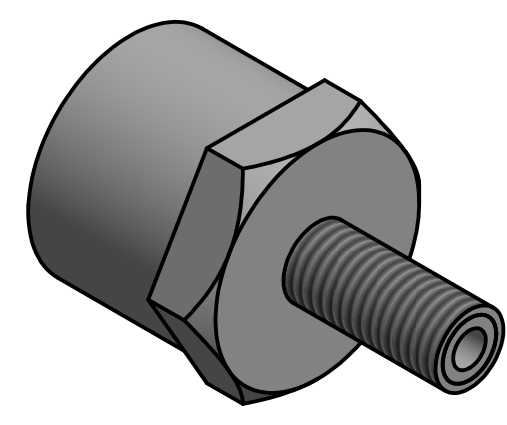
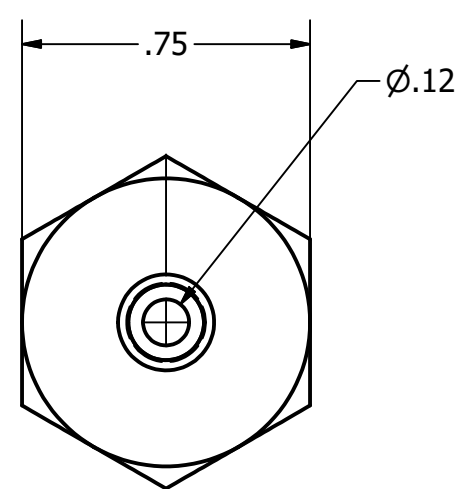
SECTION P-P  
SCALE 2 : 1



SLIDING TUBE CAP  
SCALE 2 : 1



VACUUM CONNECTOR  
SCALE 2 : 1



JENNIFER BARKER  
DRAFTER  
NAPA, CA  
415.819.0305  
J.B.DESIGN.NAPA@GMAIL.COM  
WWW.DDGT.NET/STUDENT/PAGES/JBARKER/

TOLERANCES UNLESS SPECIFIED:  
DECIMAL INCHES:  
X = ±.020  
XX = ±.010  
XXX = ±.005  
FRACTIONAL ±1/64"  
ANGLES ±1 DEGREE  
SURFACES 32

COURSE:	DDGT 241
INVENTOR DRAWING NAME:	ROBOTIC ARM
FIG #:	10-58
DRAFTER:	J. BARKER
DATE:	2/24/2021
SCALE:	AS NOTED
PAGE #:	4 OF 4

REVISION HISTORY			
REV	DATE	DESCRIPTION	APPROVED
4	2/24/2021	SLIDING TUBE SHAFT LENGTH 4.19" TO 5.19"	G. STROMMEN