



WHEEL ASSEMBLY
SCALE 1:1

LEGEND:

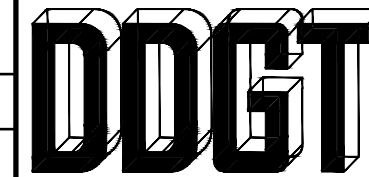
- ∅ DIAMETER
- R RADIUS
- DEGREES



WHEEL ASSEMBLY
ALTERNATE VIEW
SCALE 1:1

PARTS LIST

ITEM	QTY.	PART NAME	MATERIAL	DESCRIPTION
1	1	AXLE	STEEL	
2	1	BUSHING	BRONZE	OILLESS
3	1	HUB	ALUMINUM	
4	1	COLLAR	ALUMINUM	
5	2	PANEL RING	ALUMINUM	.12" UNIFORM THICKNESS
6	1	WHEEL	HARD RUBBER	
7	6	RIVETS	STANDARD	∅.31", 1.00" LONG, EQUALLY SPACED
8	2	WASHERS	STANDARD	I.D. 1.00", O.D. 2.12", .18" THICK
9	1	SPRING PIN	STANDARD	∅.25", 1.875" LONG



DIGITAL DESIGN
GRAPHICS
TECHNOLOGY

WWW.DDGT.NET

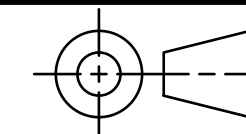
GENERAL NOTES:

ALL FILLETS HAVE R.12" UNLESS OTHERWISE NOTED

ALL CHAMFERS ARE .06" X 45° UNLESS OTHERWISE NOTED



DeGraws' Digital Design
Jacob DeGraw
Phone: (707) 312-0922
jacobdegraw707@gmail.com
<http://ddgt.net/StudentPages/jdegraw>



TOLERANCES UNLESS SPECIFIED:
DECIMAL INCHES:
X = ±.020
XX = ±.010
XXX = ±.005
FRACTIONAL ±1/64"
ANGLES ±1 DEGREE
SURFACES 3/2

REV #	DATE	DESCRIPTION	APPROVED BY	PAGE #
3	2/28/2023	INSIDE DIAMETER OF PANEL RING CHANGED FROM ∅2.80" TO ∅2.70"	G.STROMMEN	3
2	2/28/2023	CENTER LINE DIAMETER FOR RIVET PATTERN CHANGED FROM ∅ 3.50" TO ∅3.94"	G.STROMMEN	3
1	2/28/2023	TAPER ANGLE CHANGED ON WHEEL FROM 5° TO 3.5°	G.STROMMEN	3

REVISION TABLE

CLASS: DDGT121

ASSIGNMENT #: 09

AUTOCAD DRAWING NAME:
WHEEL ASSEMBLY

FIG #: 11-55

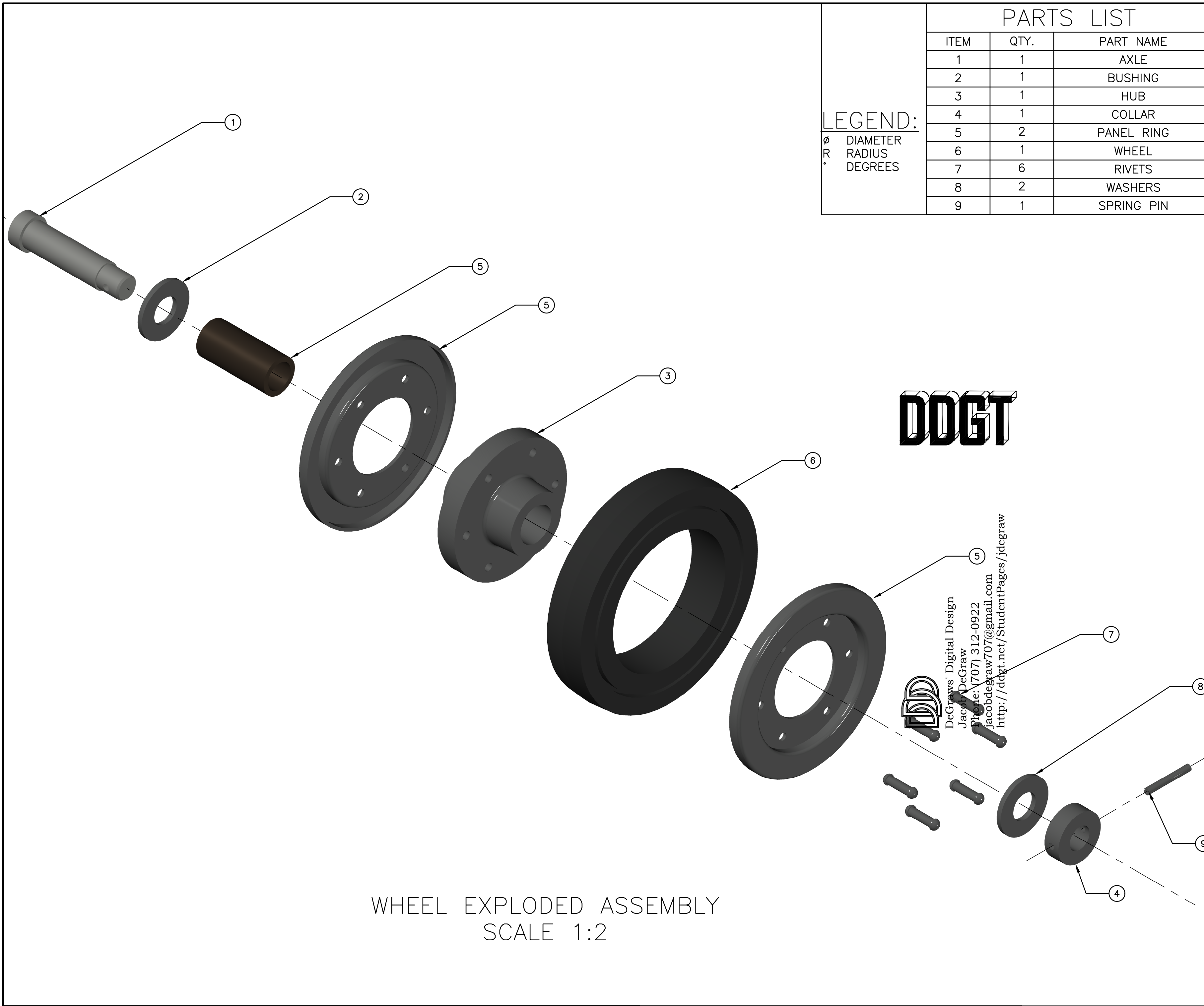
MANAGER: G. STROMMEN

DRAFTER: J. DeGraw

DATE: 4/2/2023

SCALE: AS NOTED

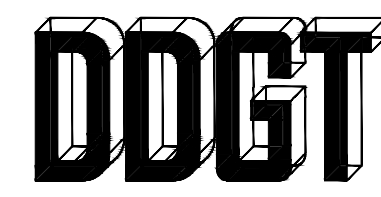
PAGE #: 1 OF 3



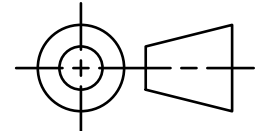
LEGEND:
 ∅ DIAMETER
 R RADIUS
 ° DEGREES

PARTS LIST		
ITEM	QTY.	PART NAME
1	1	AXLE
2	1	BUSHING
3	1	HUB
4	1	COLLAR
5	2	PANEL RING
6	1	WHEEL
7	6	RIVETS
8	2	WASHERS
9	1	SPRING PIN

DIGITAL DESIGN
 GRAPHICS
 TECHNOLOGY
 WWW.DDGT.NET
 GENERAL NOTES:
 ALL FILLETS HAVE
 R.12" UNLESS
 OTHERWISE NOTED
 ALL CHAMFERS ARE
 .06" X 45° UNLESS
 OTHERWISE NOTED



DeGraws' Digital Design
 Jacob DeGraw
 Phone: (707) 312-0922
 jacobdegraw707@gmail.com
 http://ddgt.net/StudentPages/jdegraw



TOLERANCES UNLESS SPECIFIED:
 DECIMAL INCHES:
 X = ±.020
 XX = ±.010
 XXX = ±.005
 FRACTIONAL ±1/64"
 ANGLES ±1 DEGREE
 SURFACES 32

CLASS:	DDGT121
ASSIGNMENT #:	09
AUTOCAD DRAWING NAME:	WHEEL ASSEMBLY
FIG #:	11-55
MANAGER:	G. STROMMEN
DRAFTER:	J. DeGraw
DATE:	4/2/2023
SCALE:	AS NOTED
PAGE #:	2 OF 3

WHEEL EXPLODED ASSEMBLY
 SCALE 1:2



DIGITAL DESIGN
GRAPHICS
TECHNOLOGY

WWW.DDGT.NET

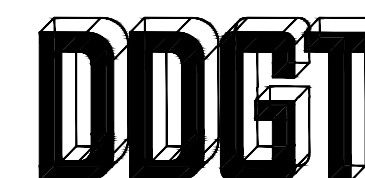
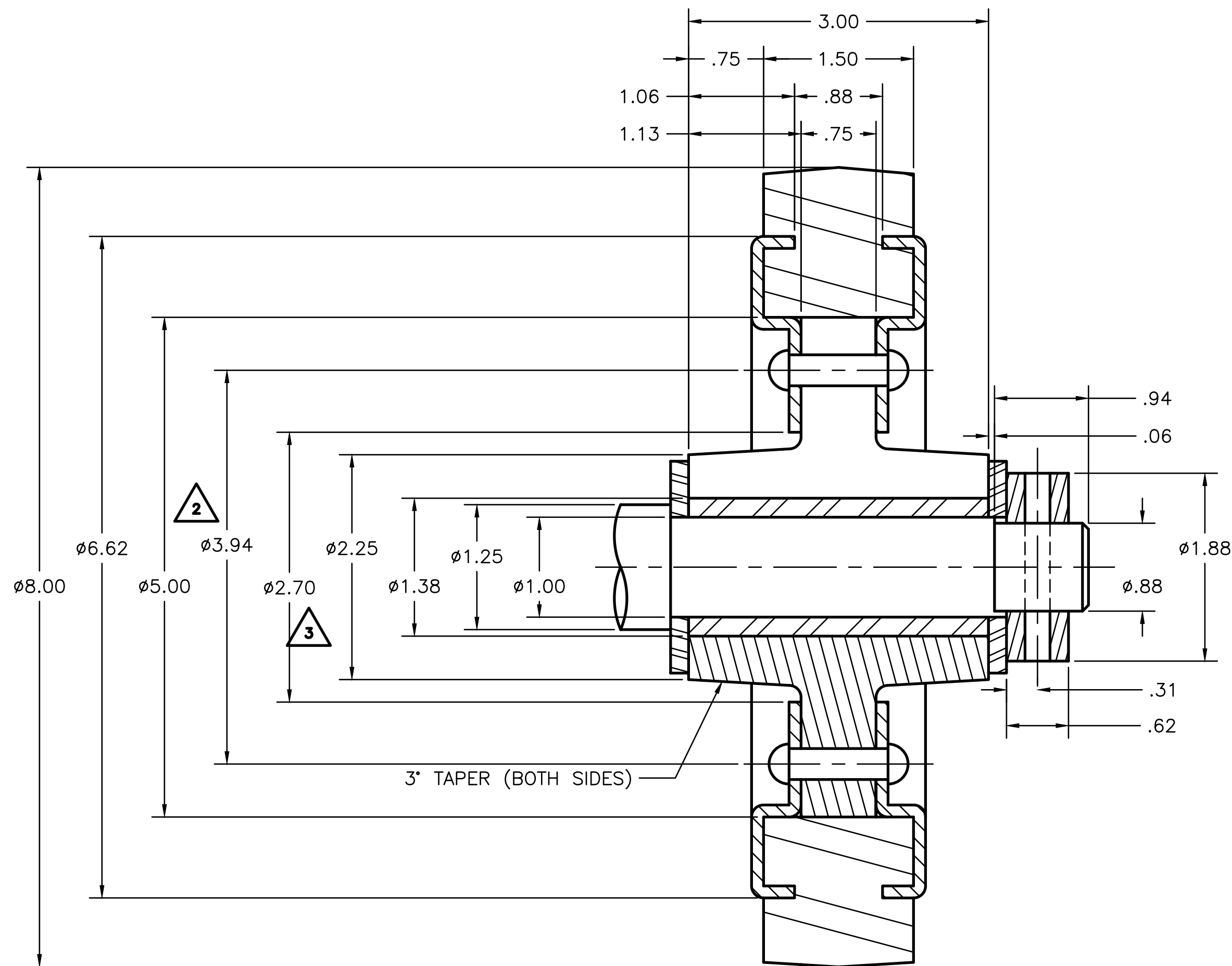
GENERAL NOTES:
ALL FILLETS HAVE
R.12" UNLESS
OTHERWISE NOTED
ALL CHAMFERS ARE
.06" X 45° UNLESS
OTHERWISE NOTED

PARTS LIST

ITEM	QTY.	PART NAME
1	1	AXLE
2	1	BUSHING
3	1	HUB
4	1	COLLAR
5	2	PANEL RING
6	1	WHEEL
7	6	RIVETS
8	2	WASHERS
9	1	SPRING PIN

LEGEND:

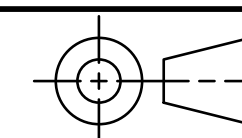
∅ DIAMETER
R RADIUS
° DEGREES



DeGraws' Digital Design
Jacob DeGraw
Phone: (707) 312-0922
jacobdegraw707@gmail.com
<http://ddgt.net/StudentPages/jdegraw>



DeGraws' Digital Design
Jacob DeGraw
Phone: (707) 312-0922
jacobdegraw707@gmail.com
<http://ddgt.net/StudentPages/jdegraw>



TOLERANCES UNLESS SPECIFIED:
DECIMAL INCHES:
X = ±.020
XX = ±.010
XXX = ±.005
FRACTIONAL ±1/64"
ANGLES ±1 DEGREE
SURFACES 3/2

1
WHEEL
SCALE 1:2

REV #	DATE	DESCRIPTION	APPROVED BY
3	2/28/2023	INSIDE DIAMETER OF PANEL RING CHANGED FROM ∅2.80" TO ∅2.70"	G.STROMMEN
2	2/28/2023	CENTER LINE DIAMETER FOR RIVET PATTERN CHANGED FROM ∅ 3.50" TO ∅3.94"	G.STROMMEN
1	2/28/2023	TAPER ANGLE CHANGED ON WHEEL FROM 5° TO 3.5°	G.STROMMEN

REVISION TABLE

CLASS: DDGT121
ASSIGNMENT #: 09
AUTOCAD DRAWING NAME: WHEEL ASSEMBLY
FIG #: 11-55
MANAGER: G. STROMMEN
DRAFTER: J. DeGraw
DATE: 4/2/2023
SCALE: AS NOTED
PAGE #: 3 OF 3