

GENERAL NOTES:

FASTEN ASSEMBLY TO A 6mm STEEL PLATE BY FOUR M10 X 40mm LG HEX HEAD BOLTS, NUTS AND LOCK WASHERS.

ROUNDS AND FILLETS R3.

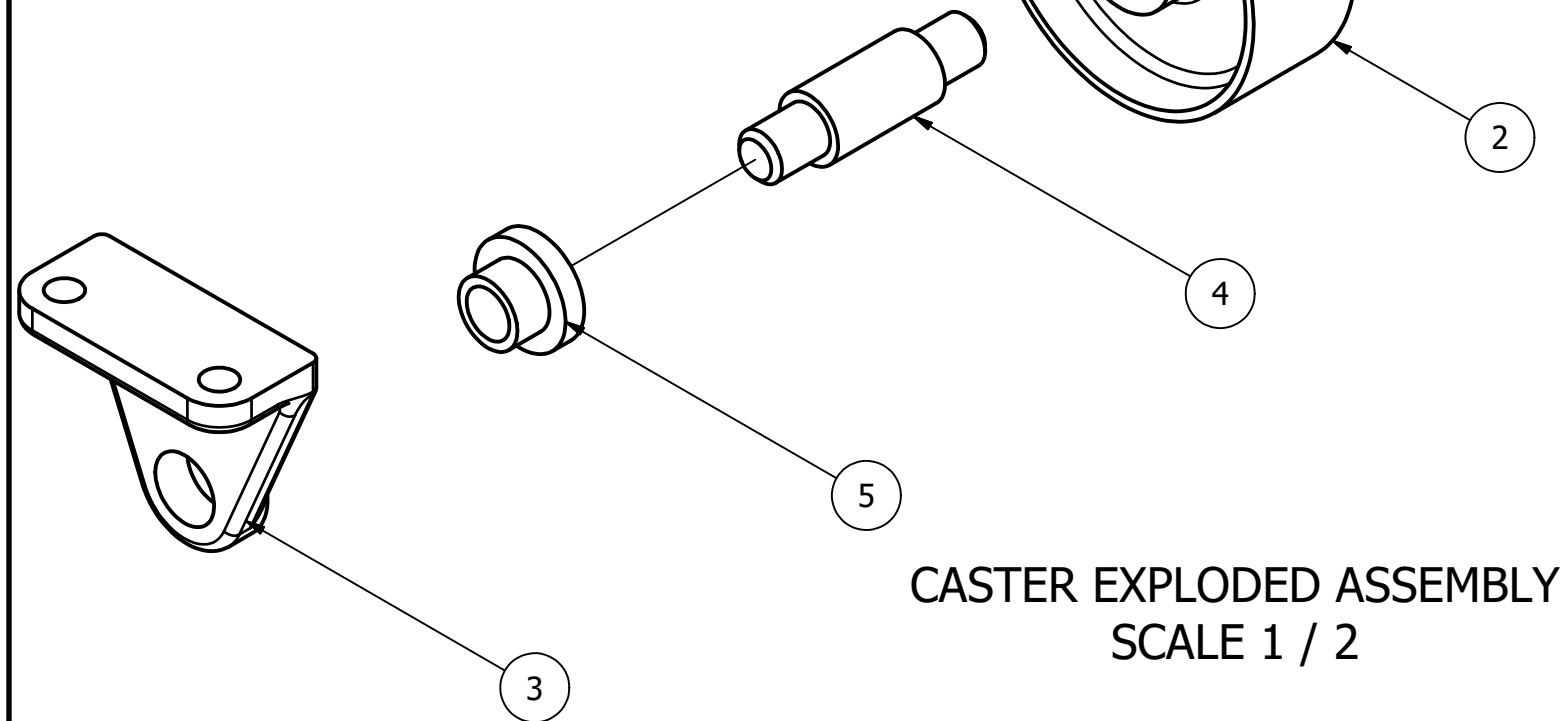
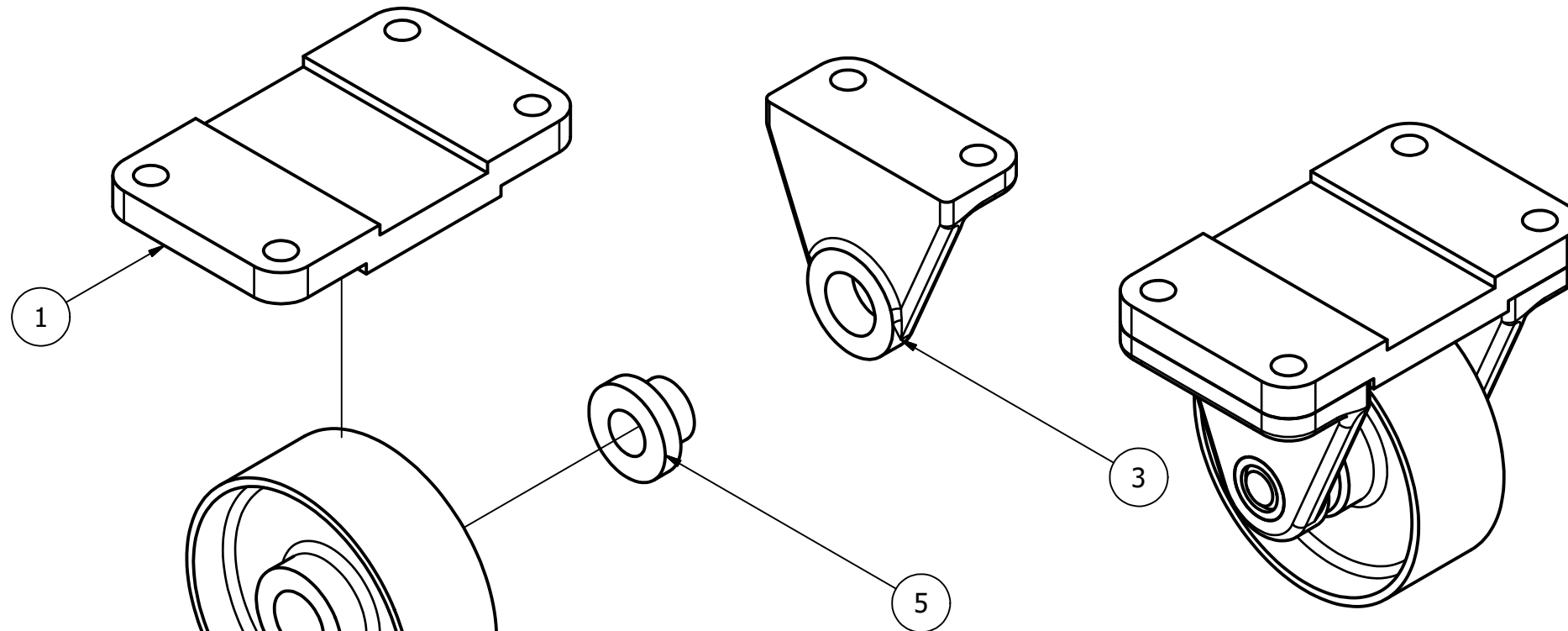
PARTS LIST			
ITEM	QTY	PART NUMBER	MATERIAL
1	1	TOP PLATE	IRON, MALLEABLE
2	1	WHEEL	IRON, MALLEABLE
3	2	AXLE SUPPORT	IRON, MALLEABLE
4	1	AXLE	STEEL ANSI 1020 108 ANLD
5	2	BUSHING	BRONZE



DIGITAL DESIGN
GRAPHICS
TECHNOLOGY

WWW.DDGT.NET

FIT	BETWEEN PARTS
H8/f7	4 AND 5
H7/p6	3 AND 5
H8/f7	2 AND 4

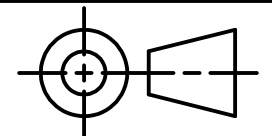


METRIC

CASTER ASSEMBLY
SCALE 1 / 2

LEGEND:

- ∅ DIAMETER
- R RADIUS
- ° DEGREES
- COUNTERBOTE/ SPOTFACE



TOLERANCES UNLESS SPECIFIED:
MILLIMETERS:
WHOLE NUMBERS = ±.5
X = ±.25
XX = ±.12
FRACTIONAL ±1/64"
ANGLES ±1 DEGREE
SURFACES ³²✓

CLASS: DDGT 120

ASSIGNMENT #: 67

INVENTOR DRAWING NAME:
9-51 CASTER

FIG #: 9-51

MANAGER: G. STROMMEN

DRAFTER: J. DEGRAW

DATE: 11/10/2022

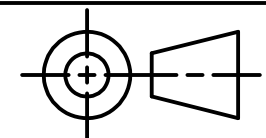
SCALE: AS NOTED

PAGE #: 1 OF 3



DIGITAL DESIGN
GRAPHICS
TECHNOLOGY

WWW.DDGT.NET



TOLERANCES UNLESS SPECIFIED:
MILLIMETERS:
WHOLE NUMBERS = ±.5
X = ±.25
XX = ±.12
FRACTIONAL ±1/64"
ANGLES ±1 DEGREE
SURFACES $\sqrt{32}$

CLASS: DDGT 120

ASSIGNMENT #: 67

INVENTOR DRAWING NAME:
9-51 CASTER

FIG #: 9-51

MANAGER: G. STROMMEN

DRAFTER: J. DEGRAW

DATE: 11/10/2022

SCALE: AS NOTED

PAGE #: 2 OF 3

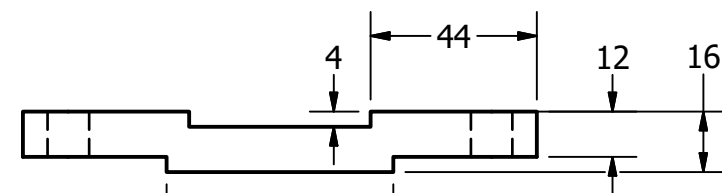
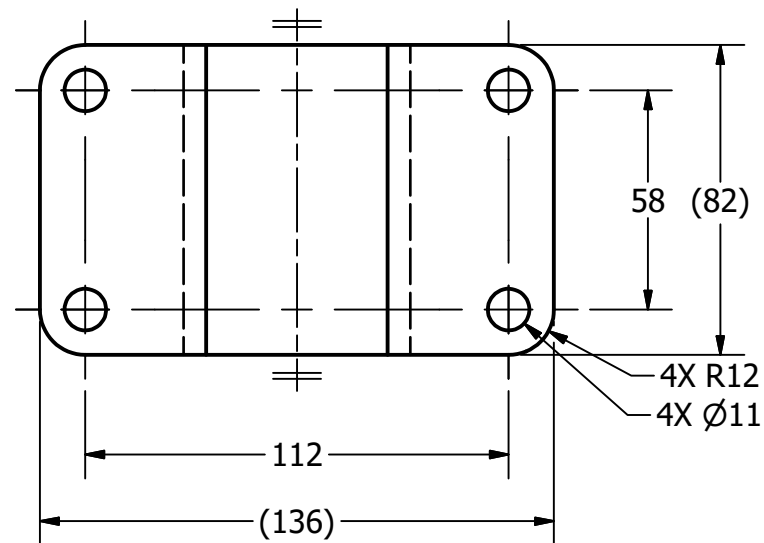
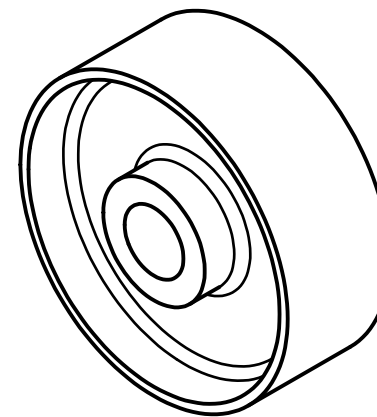
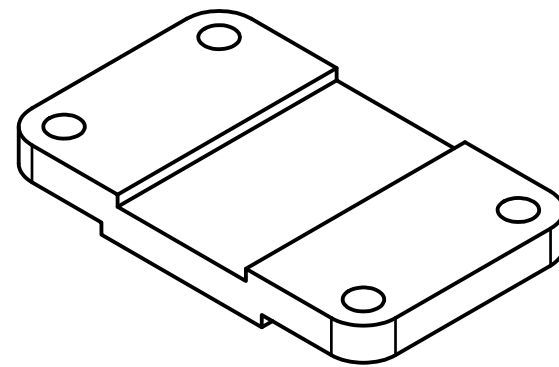
PARTS LIST

ITEM	QTY	PART NUMBER
1	1	TOP PLATE
2	1	WHEEL

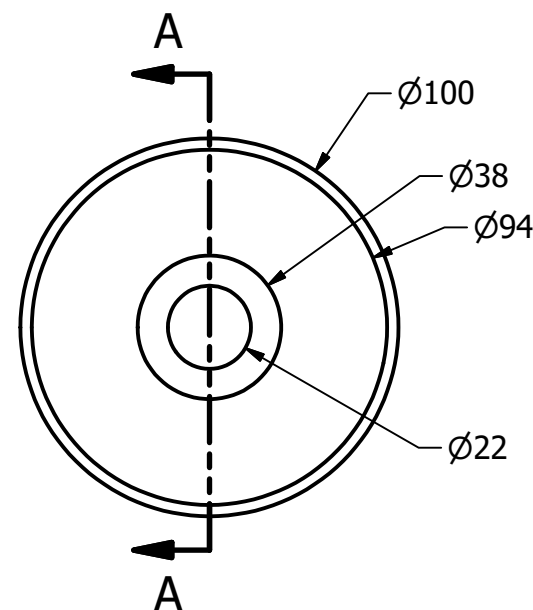
GENERAL NOTES:

FASTEN ASSEMBLY TO A 6mm STEEL PLATE BY FOUR M10 X 40mm LG HEX HEAD BOLTS, NUTS AND LOCK WASHERS.

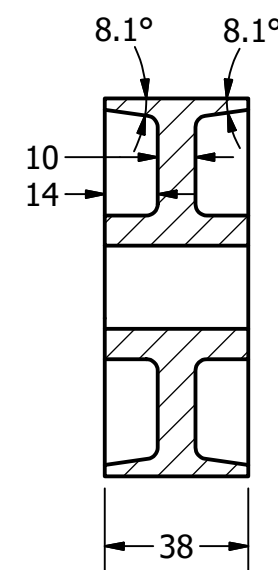
ROUNDS AND FILLETS R3.



TOP PLATE
SCALE 1 / 2



WHEEL
SCALE 1 / 2



SECTION A-A
SCALE 1 / 2

LEGEND:

- ∅ DIAMETER
- R RADIUS
- ° DEGREES
- COUNTERBOTE/ SPOTFACE

METRIC

PARTS LIST

ITEM	QTY	PART NUMBER
3	2	AXLE SUPPORT
4	1	AXLE
5	2	BUSHING



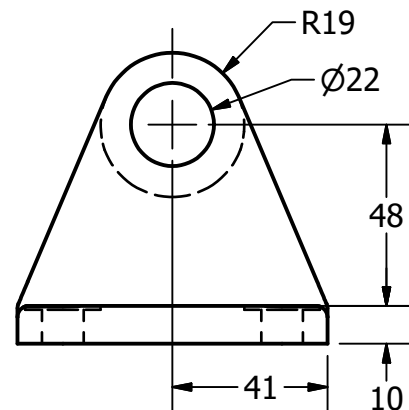
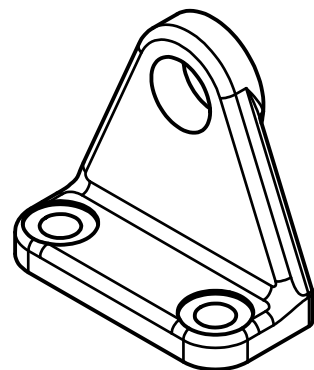
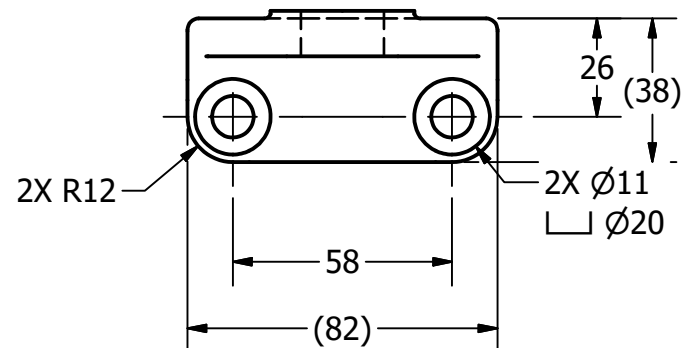
DIGITAL DESIGN
GRAPHICS
TECHNOLOGY

WWW.DDGT.NET

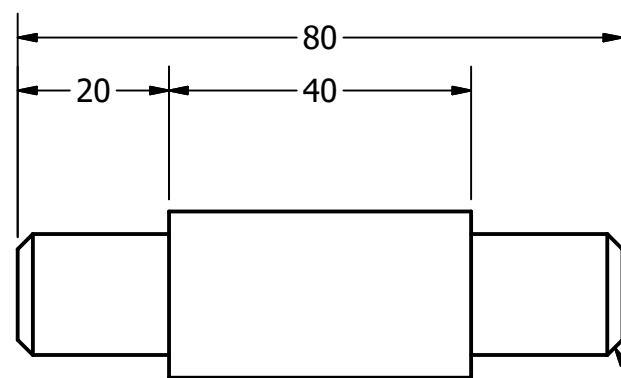
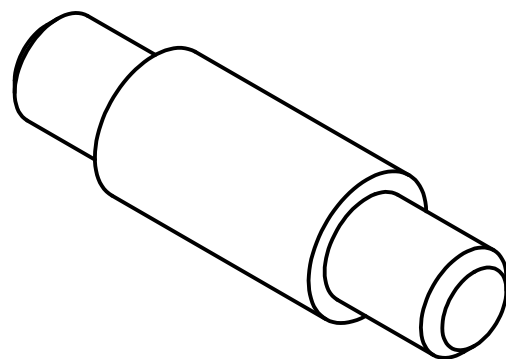
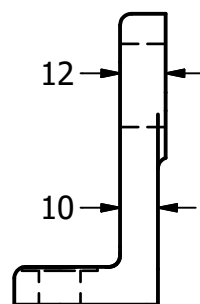
GENERAL NOTES:

FASTEN ASSEMBLY TO A 6mm STEEL PLATE BY FOUR M10 X 40mm LG HEX HEAD BOLTS, NUTS AND LOCK WASHERS.

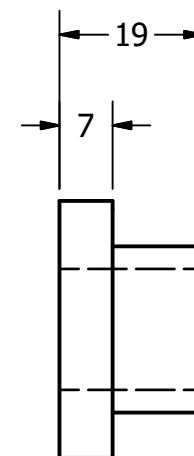
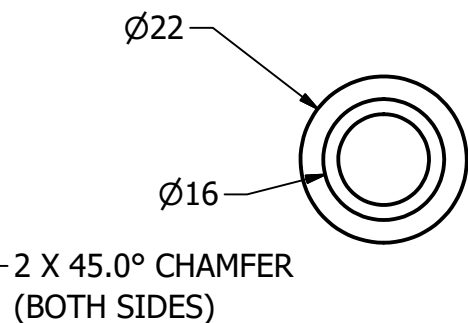
ROUNDS AND FILLETS R3.



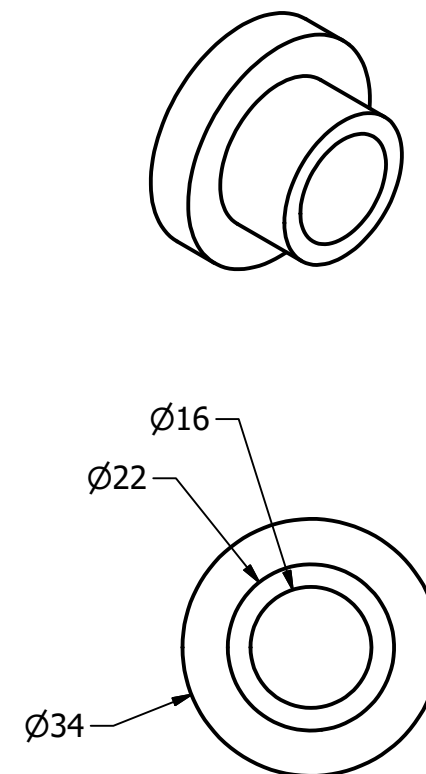
AXLE SUPPORT
SCALE 1 / 2



AXLE
SCALE 1 : 1



BUSHING
SCALE 1 : 1



LEGEND:

- Ø DIAMETER
- R RADIUS
- ° DEGREES
- COUNTERBOTE/ SPOTFACE

METRIC

TOLERANCES UNLESS SPECIFIED:
MILLIMETERS:
WHOLE NUMBERS = ±.5
X = ±.25
XX = ±.12
FRACTIONAL ±1/64"
ANGLES ±1 DEGREE
SURFACES 32 ✓

CLASS: DDGT 120

ASSIGNMENT #: 67

INVENTOR DRAWING NAME:
9-51 CASTER

FIG #: 9-51

MANAGER: G. STROMMEN

DRAFTER: J. DEGRAW

DATE: 11/10/2022

SCALE: AS NOTED

PAGE #: 3 OF 3