

PARTS LIST

ITEM	QTY	PART NUMBER	MATERIAL	DESCRIPTION
1	2	SIDE PLATE SUB ASSEMBLY		SUB-ASSEMBLY
1.1	2	SIDE PLATE	MILD STEEL	
1.2	2	GUIDE	CAST IRON	
1.3	4	RIVET	STANDARD	BUTTON HEAD Ø10X 60LG
2	1	HOOK	MILD STEEL	
3	4	WHEEL	CAST IRON	
4	1	AXLE	COLD ROLLED STEEL	
5	4	WHEEL AXLE	COLD ROLLED STEEL	
6	44	ROLLER BEARING	COLD ROLLED STEEL	
7	6	COTTER PIN	STANDARD	Ø6 X 40LG
8	4	LOCKNUT	STANDARD	M16 X 2 (PREVAILING TORQUE INSERT- TYPE)
9	8	ADJUSTING WASHER	STANDARD	Ø26ID X Ø44OD X 4THK
10	4	WASHER	STANDARD	Ø26ID X Ø65OD X 3THK

LEGEND:

- Ø DIAMETER
- R RADIUS
- ° DEGREES

GENERAL NOTES:

TROLLEY ASSEMBLY TO BE MOUNTED TO S200 X 34 BEAM

TROLLEY
SCALE 1 / 2

METRIC



DIGITAL DESIGN
GRAPHICS
TECHNOLOGY

WWW.DDGT.NET

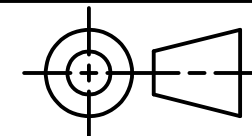


J-TECH

www.ddgt.net/StudentPages/jebuen

J-TECH
PHOTOGRAPHIC
&
2D-3D DESIGN

Junest Ebuén
Vallejo, CA
lex101je92@gmail.com



TOLERANCES UNLESS SPECIFIED:
MILLIMETERS:
WHOLE NUMBER = ±.5
X = ±.25
XX = ±.12

ANGLES ± 1 DEGREE
SURFACES ³²✓

COURSE: DDGT120

INVENTOR DRAWING NAME:
TROLLEY

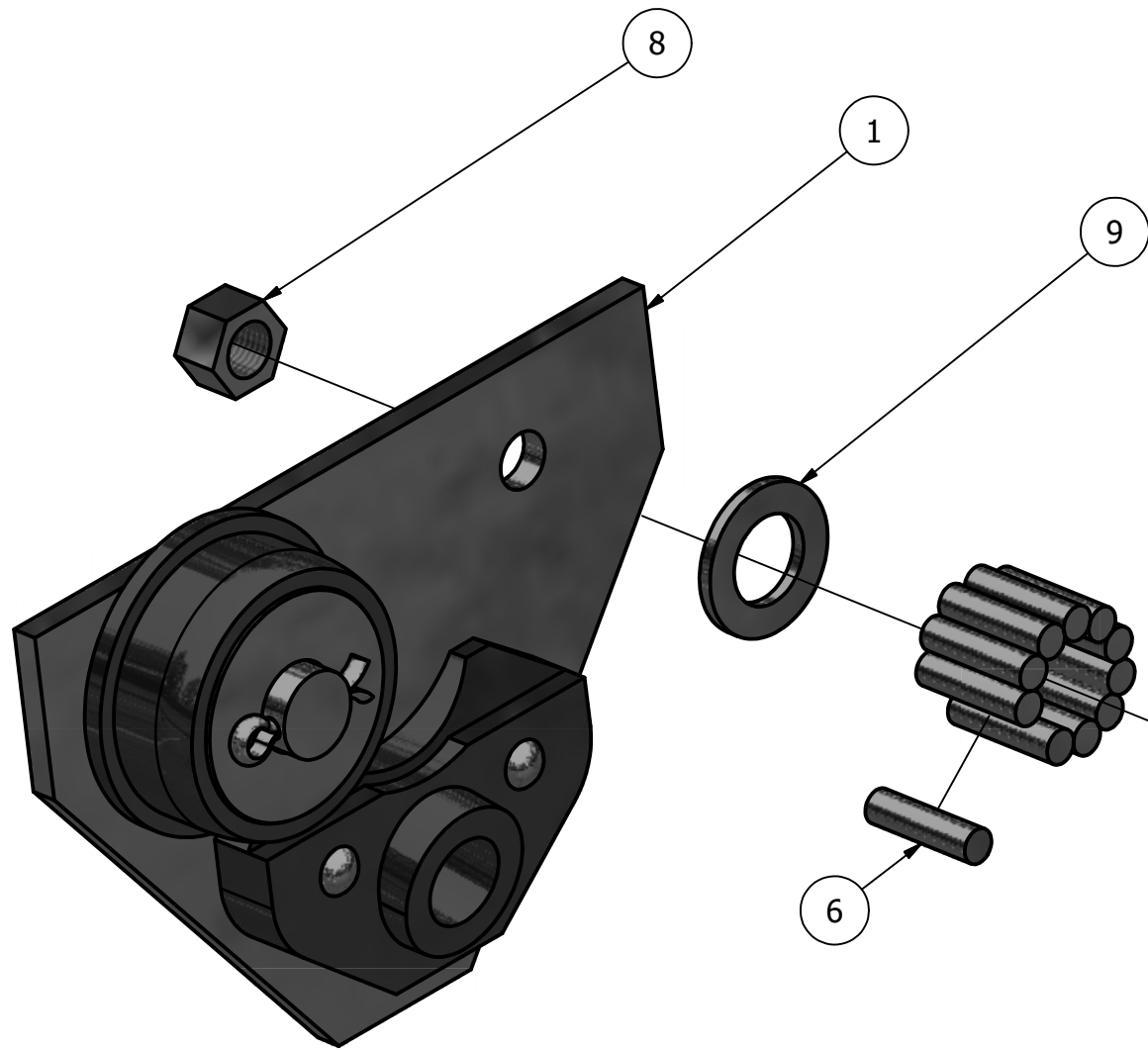
FIG #: 14-83

DRAFTER: J.EBUEN

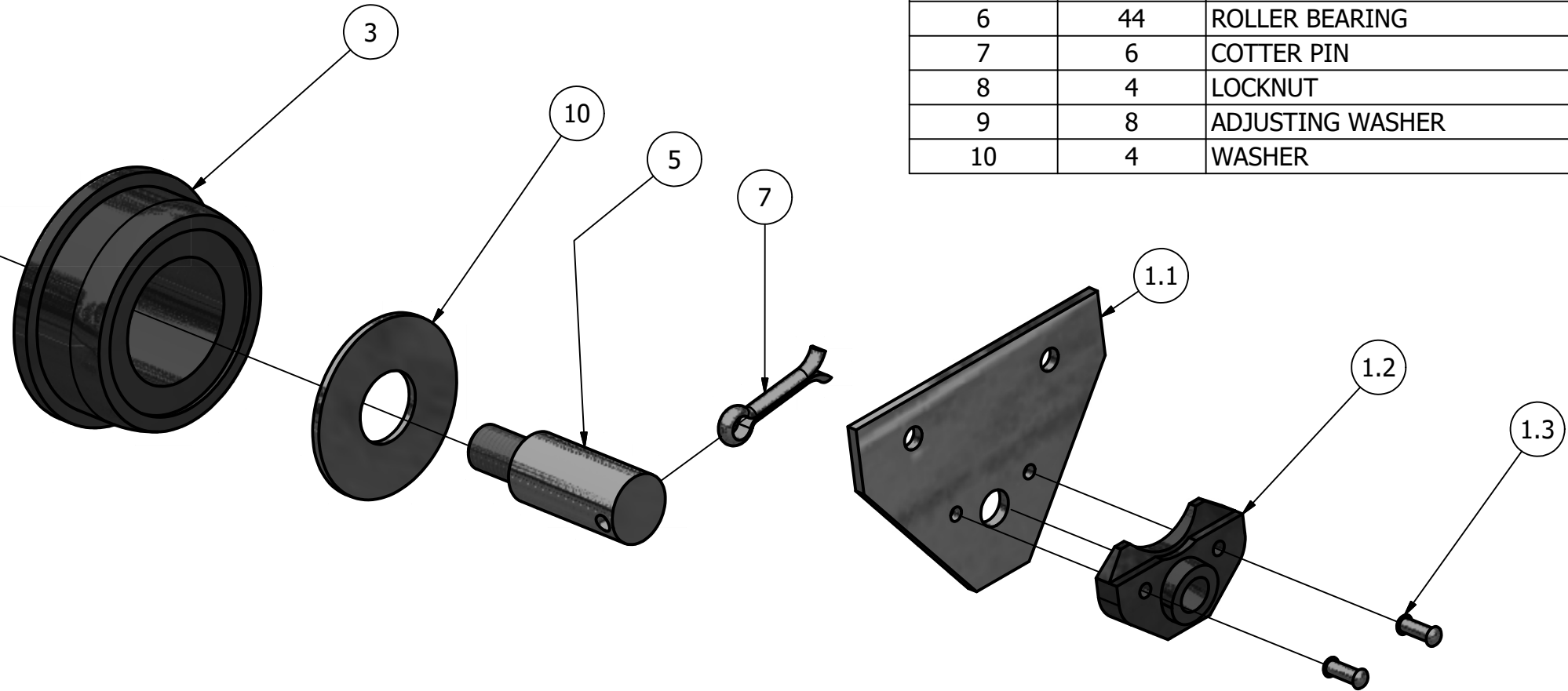
DATE: 12/12/2019

SCALE: AS NOTED

PAGE #: 1 OF 6



SIDE PLATE EXPLODED ASSEMBLY
SCALE 1 / 2



SIDE PLATE EXPLODED SUB- ASSEMBLY
SCALE 1 / 4

PARTS LIST		
ITEM	QTY	PART NUMBER
1	2	SIDE PLATE SUB ASSEMBLY
1.1	2	SIDE PLATE
1.2	2	GUIDE
1.3	4	RIVET
2	1	HOOK
3	4	WHEEL
4	1	AXLE
5	4	WHEEL AXLE
6	44	ROLLER BEARING
7	6	COTTER PIN
8	4	LOCKNUT
9	8	ADJUSTING WASHER
10	4	WASHER



DIGITAL DESIGN
GRAPHICS
TECHNOLOGY

WWW.DDGT.NET

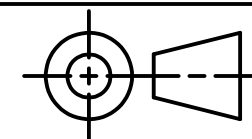


J-TECH

www.ddgt.net/StudentPages/jebuen

J-TECH
PHOTOGRAPHIC
&
2D-3D DESIGN

Junest Ebuon
Vallejo, CA
lex101je92@gmail.com



TOLERANCES UNLESS SPECIFIED:
MILLIMETERS:
WHOLE NUMBER = ±.5
X = ±.25
XX = ±.12

ANGLES ± 1 DEGREE
SURFACES $\sqrt{32}$

COURSE: DDGT120

INVENTOR DRAWING NAME:
TROLLEY

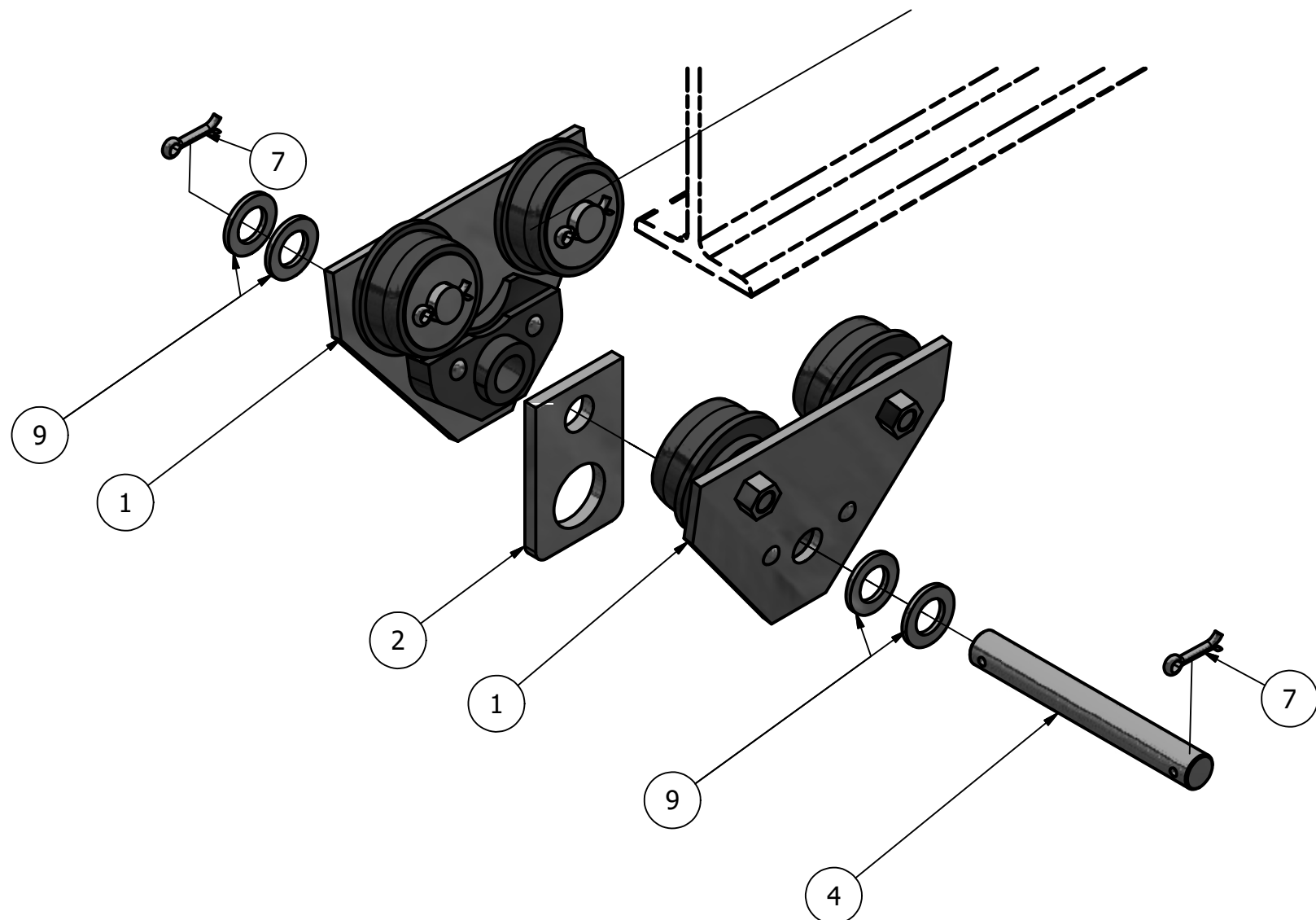
FIG #: 14-83

DRAFTER: J.EBUEN

DATE: 12/12/2019

SCALE: AS NOTED

PAGE #: 2 OF 6



PARTS LIST		
ITEM	QTY	PART NUMBER
1	2	SIDE PLATE SUB ASSEMBLY
1.1	2	SIDE PLATE
1.2	2	GUIDE
1.3	4	RIVET
2	1	HOOK
3	4	WHEEL
4	1	AXLE
5	4	WHEEL AXLE
6	44	ROLLER BEARING
7	6	COTTER PIN
8	4	LOCKNUT
9	8	ADJUSTING WASHER
10	4	WASHER

TROLLEY EXPLODED ASSEMBLY
SCALE 1 / 4

DDGT
DIGITAL DESIGN
GRAPHICS
TECHNOLOGY
WWW.DDGT.NET

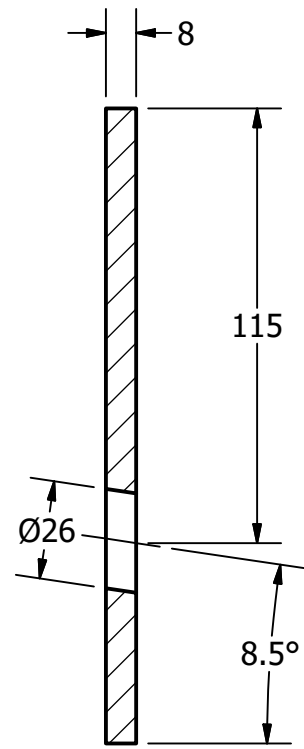
J-TECH
www.ddgt.net/StudentPages/jebuen

**J-TECH
PHOTOGRAPHIC
&
2D-3D DESIGN**
Junest Ebuena
Vallejo, CA
lex101je92@gmail.com

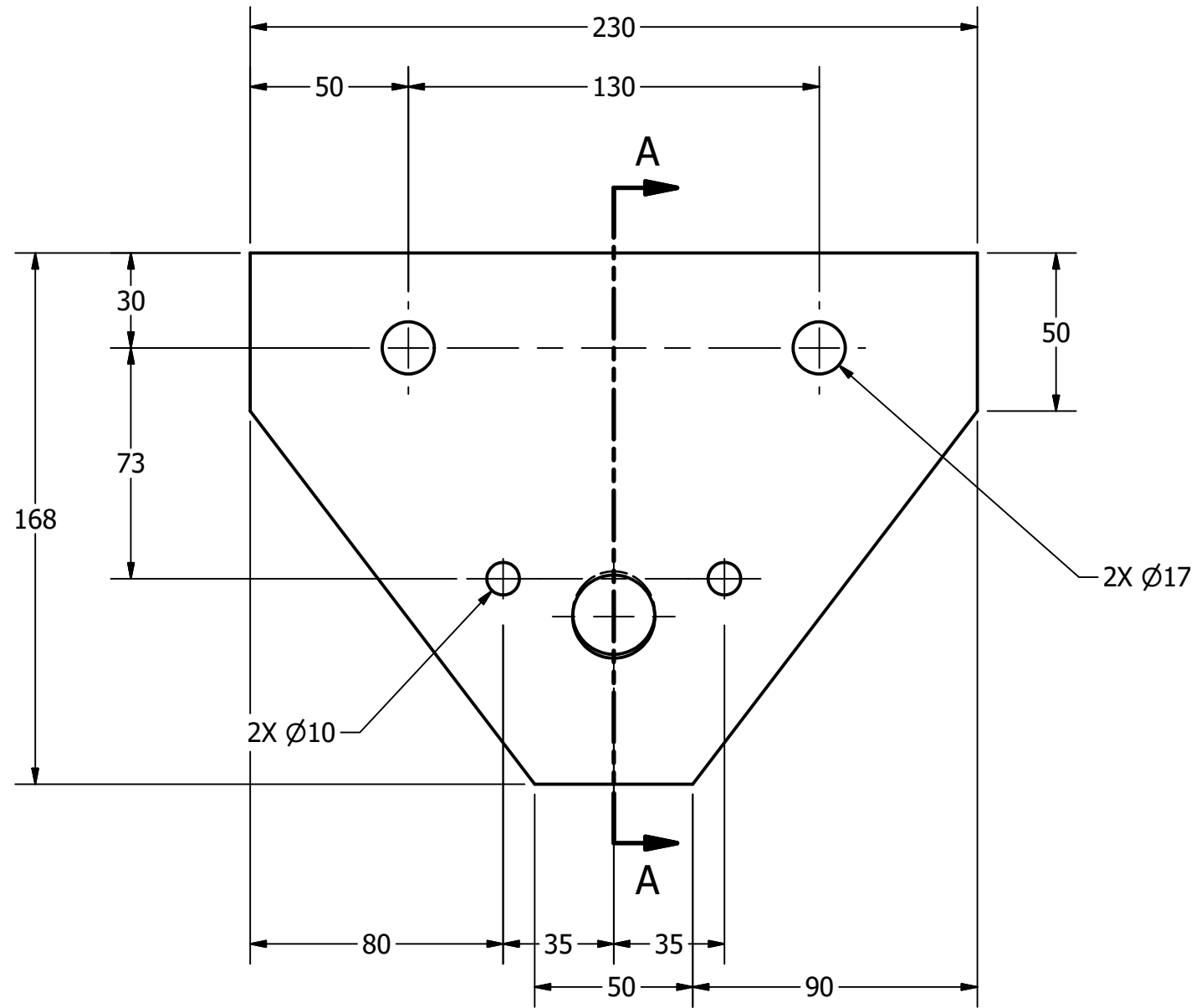
TOLERANCES UNLESS SPECIFIED:
MILLIMETERS:
WHOLE NUMBER = ±.5
X = ±.25
XX = ±.12
ANGLES ± 1 DEGREE
SURFACES ³²✓

COURSE:	DDGT120
INVENTOR DRAWING NAME:	TROLLEY
FIG #:	14-83
DRAFTER:	J.EBUEN
DATE:	12/12/2019
SCALE:	AS NOTED
PAGE #:	3 OF 6

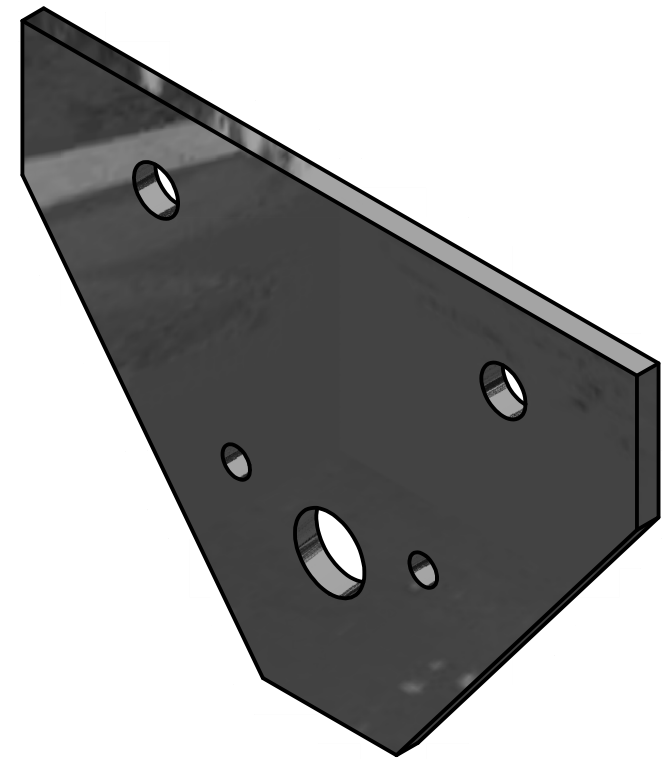
PARTS LIST		
ITEM	QTY	PART NUMBER
1.1	4	SIDE PLATE



SECTION A-A
SCALE 1 / 2



SIDE PLATE
SCALE 1 / 2



DDGT
DIGITAL DESIGN
GRAPHICS
TECHNOLOGY
WWW.DDGT.NET

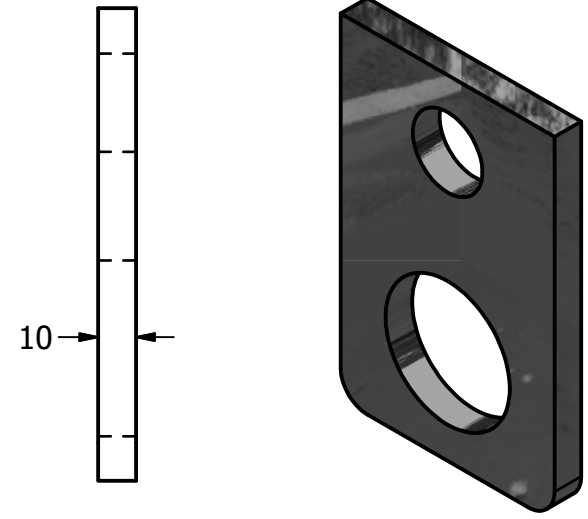
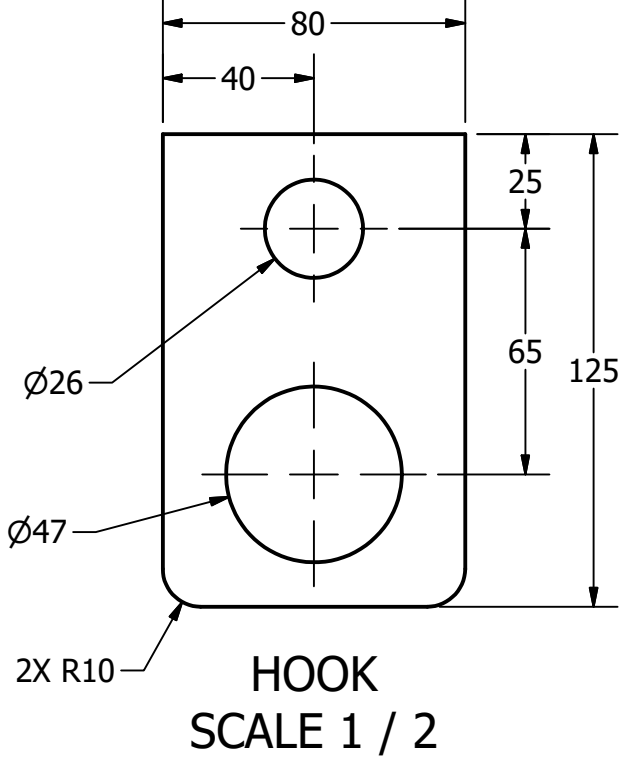
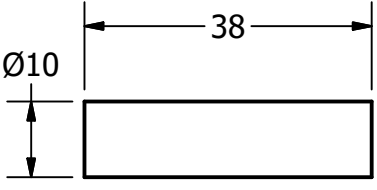
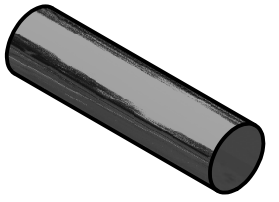
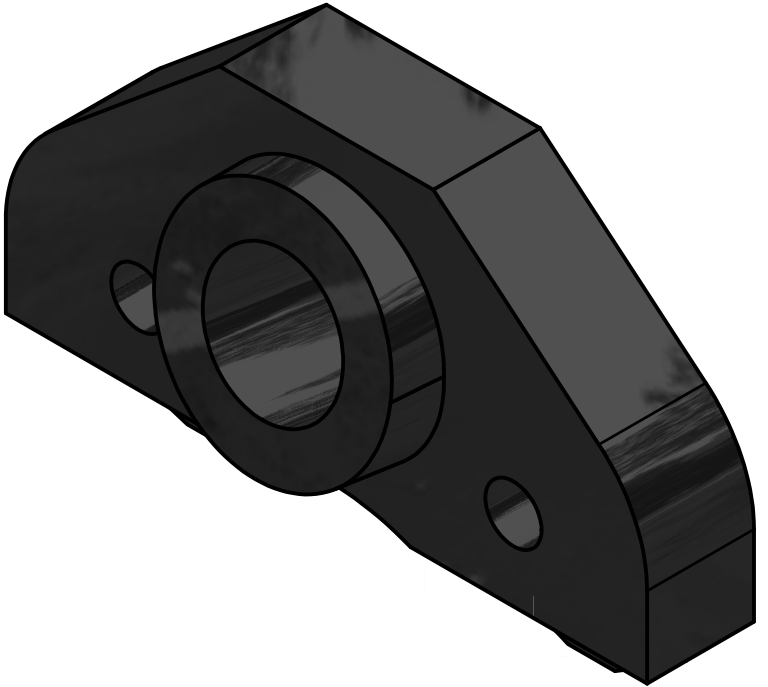
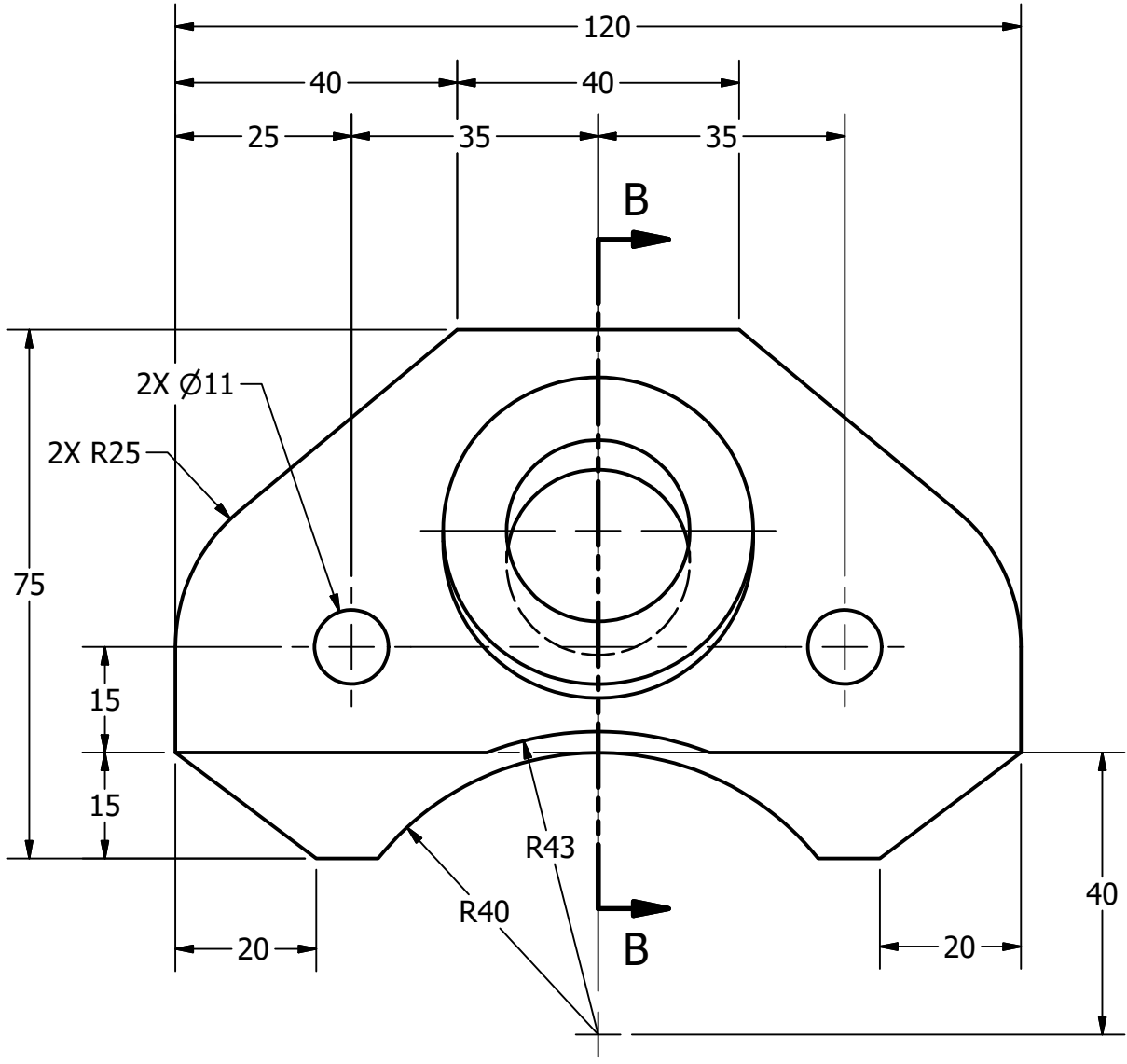
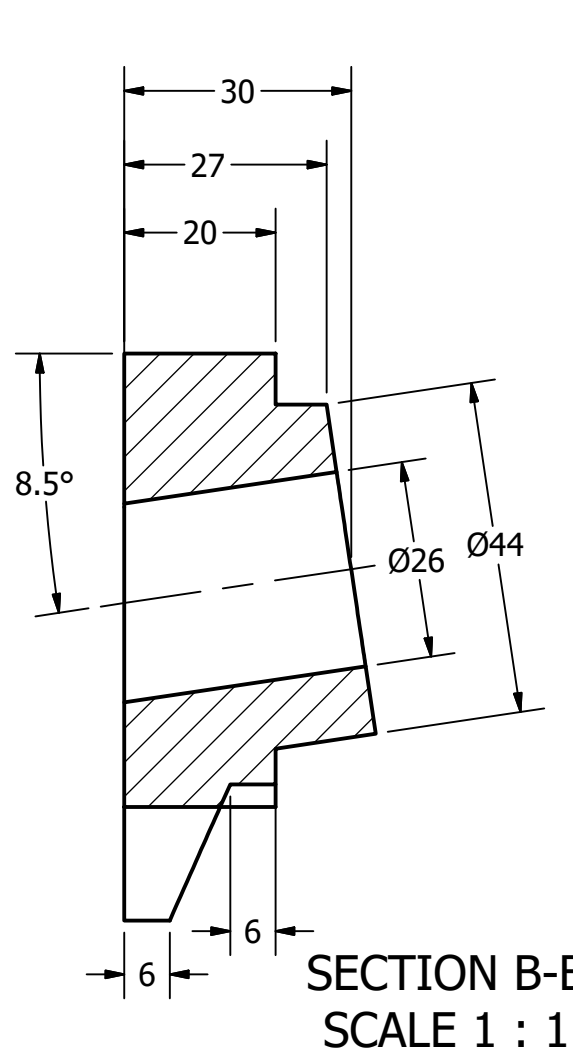
J-TECH
www.ddgt.net/StudentPages/jebuen

**J-TECH
PHOTOGRAPHIC
&
2D-3D DESIGN**
Junest Ebuena
Vallejo, CA
lex101je92@gmail.com

TOLERANCES UNLESS SPECIFIED:
MILLIMETERS:
WHOLE NUMBER = ±.5
X = ±.25
XX = ±.12
ANGLES ± 1 DEGREE
SURFACES ³²✓

COURSE:	DDGT120
INVENTOR DRAWING NAME:	TROLLEY
FIG #:	14-83
DRAFTER:	J.EBUEN
DATE:	12/12/2019
SCALE:	AS NOTED
PAGE #:	4 OF 6

PARTS LIST		
ITEM	QTY	PART NUMBER
1.2	4	GUIDE
2	1	HOOK
6	44	ROLLER BEARING

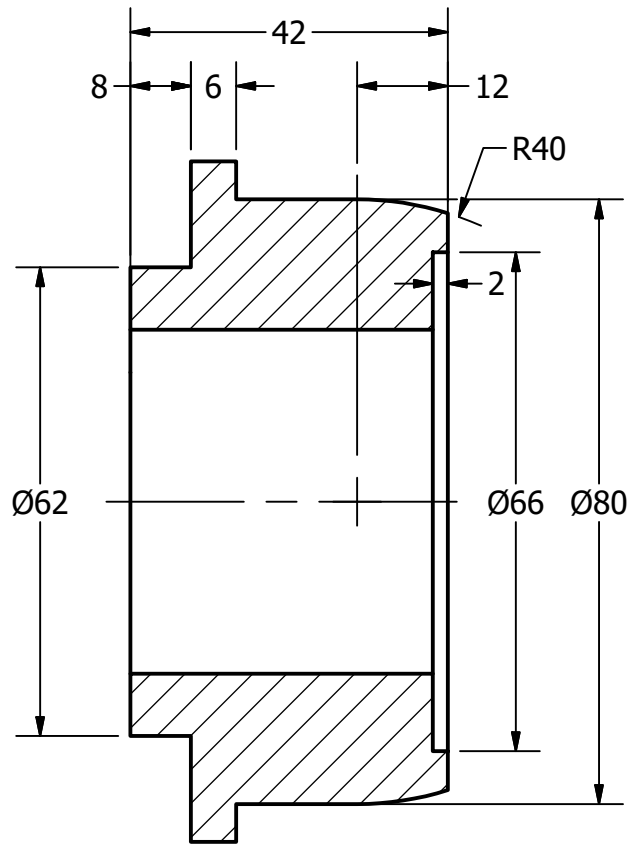


DDGT
DIGITAL DESIGN
GRAPHICS
TECHNOLOGY
WWW.DDGT.NET

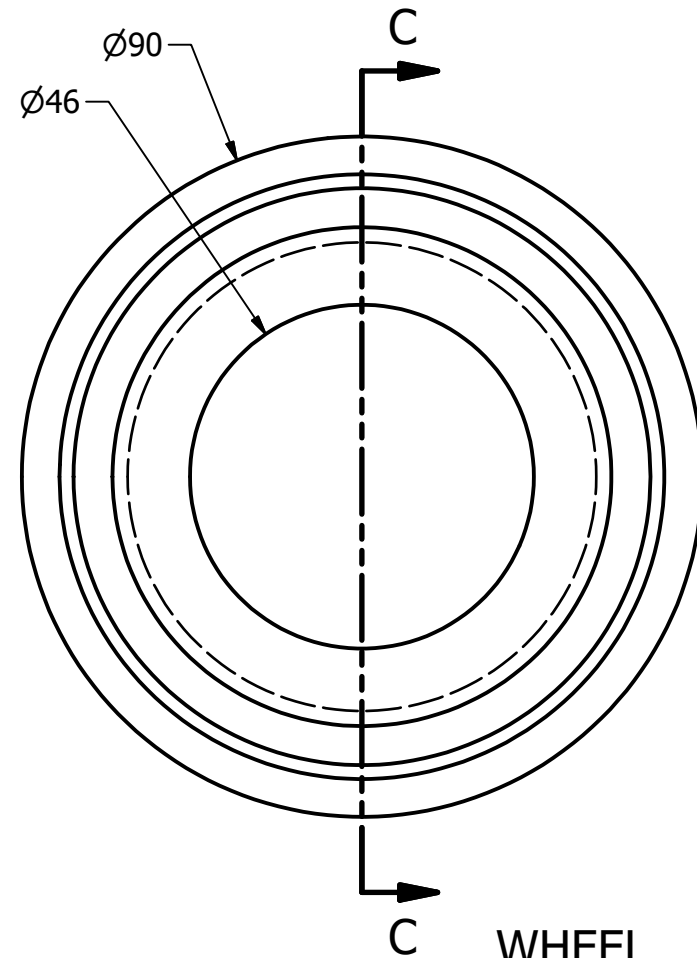
J-TECH
PHOTOGRAPHIC
&
2D-3D DESIGN
Junest Ebuén
Vallejo, CA
lex101je92@gmail.com
www.ddgt.net/StudentPages/jebuen

TOLERANCES UNLESS SPECIFIED:
MILLIMETERS:
WHOLE NUMBER = ±.5
X = ±.25
XX = ±.12
ANGLES ± 1 DEGREE
SURFACES $\sqrt{32}$

COURSE:	DDGT120
INVENTOR DRAWING NAME:	TROLLEY
FIG #:	14-83
DRAFTER:	J.EBUEN
DATE:	12/12/2019
SCALE:	AS NOTED
PAGE #:	5 OF 6



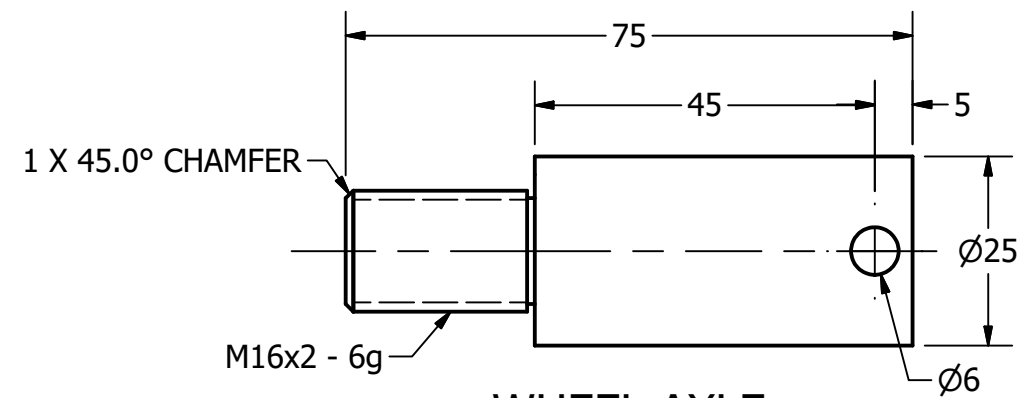
SECTION C-C
SCALE 1 : 1



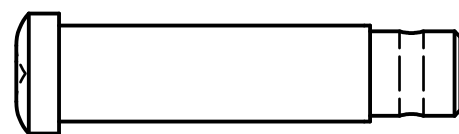
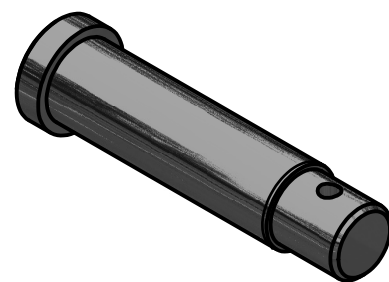
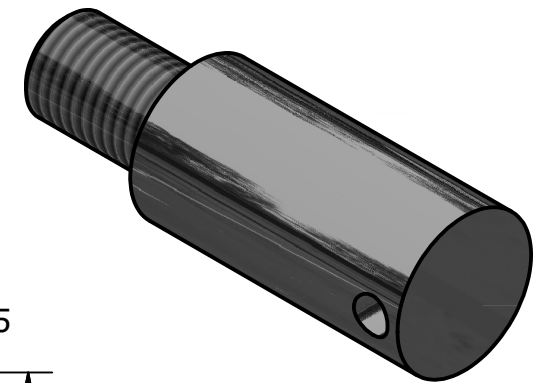
WHEEL
SCALE 1 : 1



PARTS LIST		
ITEM	QTY	PART NUMBER
3	4	WHEEL
4	1	AXLE
5	4	WHEEL AXLE



WHEEL AXLE
SCALE 1 : 1



AXLE
SCALE 1 / 2



DIGITAL DESIGN
GRAPHICS
TECHNOLOGY

WWW.DDGT.NET

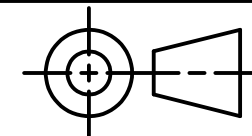


J-TECH

www.ddgt.net/StudentPages/jebuen

J-TECH
PHOTOGRAPHIC
&
2D-3D DESIGN

Junest Ebuén
Vallejo, CA
lex101je92@gmail.com



TOLERANCES UNLESS SPECIFIED:
MILLIMETERS:
WHOLE NUMBER = ±.5
X = ±.25
XX = ±.12

ANGLES ± 1 DEGREE
SURFACES ³²✓

COURSE: DDGT120

INVENTOR DRAWING NAME:
TROLLEY

FIG #: 14-83

DRAFTER: J.EBUEN

DATE: 12/12/2019

SCALE: AS NOTED

PAGE #: 6 OF 6