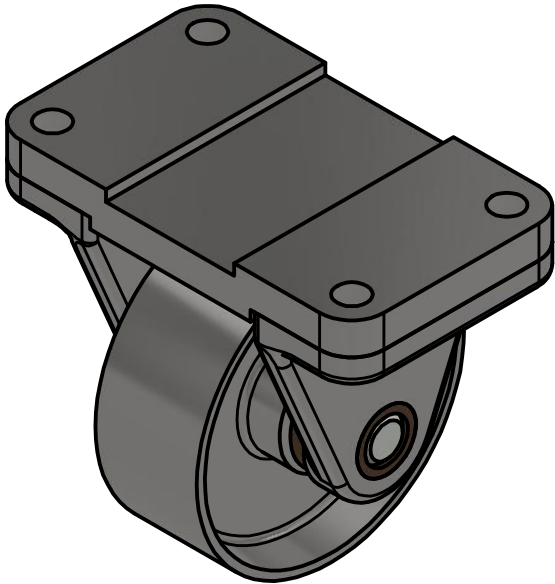


PARTS LIST			
ITEM	QTY	PART NUMBER	MATERIAL
1	1	TOP PLATE	MALLEABLE IRON
2	1	WHEEL	MALLEABLE IRON
3	2	AXLE SUPPORT	MALLEABLE IRON
4	1	AXLE	SAE 1020
5	2	BUSHING	BRONZE

FIT	BETWEEN PARTS
H8/f7	4 AND 5
H7/p6	3 AND 5
H8/f7	2 AND 4



CASTER ASSEMBLY  
SCALE 1 / 2

LEGEND:

- Ø DIAMETER
- R RADIUS
- ° DEGREES
- SPOTFACE

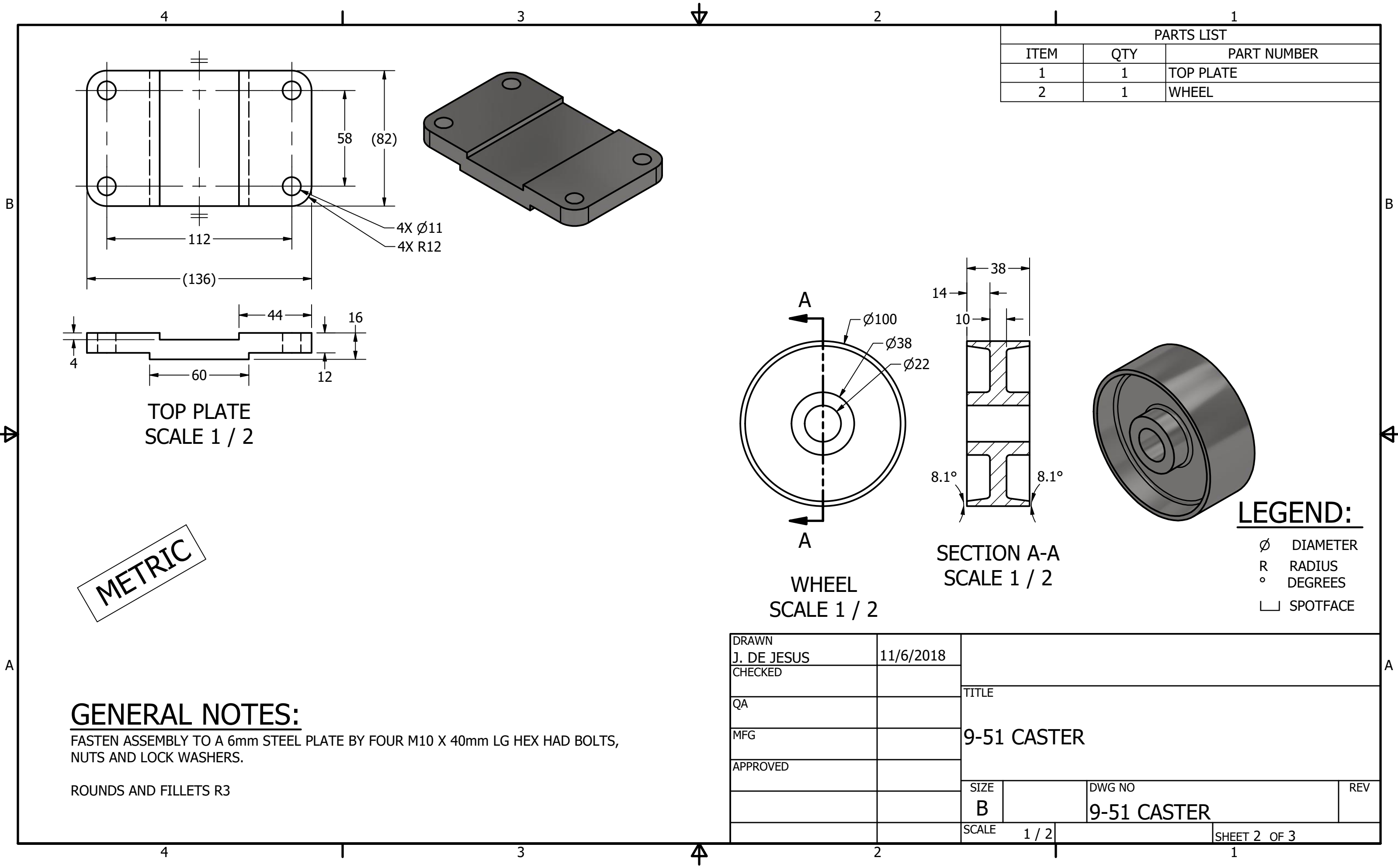
CASTER EXPLODED ASSEMBLY  
SCALE 1 / 2

GENERAL NOTES:

FASTEN ASSEMBLY TO A 6mm STEEL PLATE BY FOUR M10 X 40mm LG HEX HAD BOLTS, NUTS AND LOCK WASHERS.

ROUNDS AND FILLETS R3

DRAWN J. DE JESUS	11/6/2018	TITLE  9-51 CASTER		
CHECKED				
QA				
MFG				
APPROVED		SIZE B	DWG NO 9-51 CASTER	REV
		SCALE 1 / 2	SHEET 1 OF 3	



PARTS LIST		
ITEM	QTY	PART NUMBER
1	1	TOP PLATE
2	1	WHEEL

TOP PLATE  
SCALE 1 / 2

WHEEL  
SCALE 1 / 2

SECTION A-A  
SCALE 1 / 2

**LEGEND:**

Ø DIAMETER  
R RADIUS  
° DEGREES  
□ SPOTFACE

METRIC

**GENERAL NOTES:**

FASTEN ASSEMBLY TO A 6mm STEEL PLATE BY FOUR M10 X 40mm LG HEX HAD BOLTS,  
NUTS AND LOCK WASHERS.

ROUNDS AND FILLETS R3

DRAWN J. DE JESUS	11/6/2018	TITLE  9-51 CASTER		
CHECKED				
QA				
MFG				
APPROVED		SIZE B	DWG NO 9-51 CASTER	REV
		SCALE 1 / 2	SHEET 2 OF 3	

