

WHEEL ASSEMBLY
SCALE 1 : 1



WHEEL ASSEMBLY (ALT VIEW)
SCALE 1 : 1

PARTS LIST				
ITEM	QTY	PART NUMBER	MATERIAL	DESCRIPTION
1	1	AXLE	STEEL	
2	1	BUSHING	BRONZE	OILLESS
3	1	HUB	ALUMINUM	
4	1	COLLAR	ALUMINUM	
5	2	SIDE PLATE	ALUMINUM	.12" UNIFORM THICKNESS
6	1	WHEEL	HARD RUBBER	
7	6	RIVET	STANDARD	∅.31", 1.00" INSIDE LENGTH EQUALLY SPACED
8	2	WASHER	STANDARD	I.D. ∅1.00", O.D. ∅2.12", .18" THICK
9	1	SPRING PIN	STANDARD	∅.25", 1.875" LONG (MC MASTER-CARR 98296A932

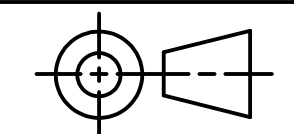


DIGITAL DESIGN
GRAPHICS
TECHNOLOGY

WWW.DDGT.NET

GENERAL NOTES:

ALL FILLETS R.12"
UNLESS OTHERWISE
NOTED
ALL CHAMFERS ARE .06"
X 45° UNLESS
OTHERWISE NOTE



TOLERANCES UNLESS SPECIFIED:
DECIMAL INCHES:
X = ±.020
XX = ±.010
XXX = ±.005
FRACTIONAL ±1/64"
ANGLES ±1 DEGREE

SURFACES ³² ✓

CLASS: DDGT 121

ASSIGNMENT #: 11

INVENTOR DRAWING NAME:

WHEEL ASSEMBLY

FIG #: 11-55

MANAGER: G. STROMMEN

DRAFTER: Ken

DATE: 2/27/2023

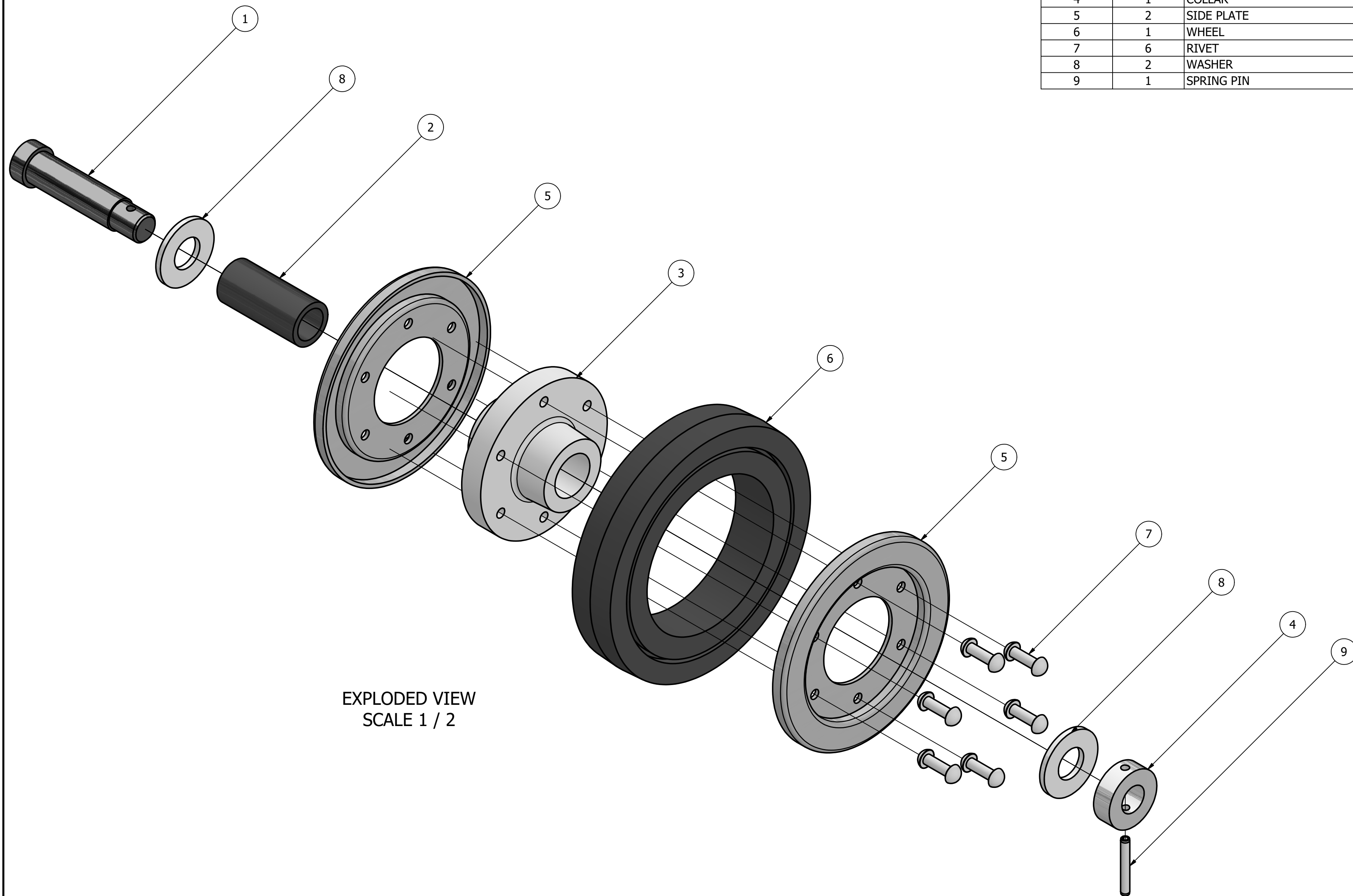
SCALE: AS NOTED

PAGE #: 1 OF 3

LEGEND:

∅ DIAMETER
R RADIUS
° DEGREES

REV	DATE	DESCRIPTION	APPROVED	SHEET
3	3/11/2023	INSIDE DIAMETER OF RING CHANGED FROM ∅2.80 TO ∅2.70	G.STROMMEN	3
2	3/11/2023	CENTERLINE DIAMETER FOR RIVET PATTERN CHANGED FROM ∅3.5 TO ∅3.94	G.STROMMEN	3
1	3/11/2023	TAPER ANGLE ON WHEEL CHANGED FROM 5° TO 3.5°	G.STROMMEN	3
REVISION HISTORY				

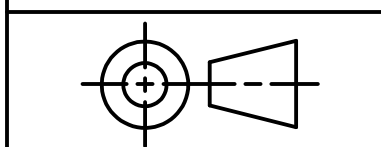


EXPLODED VIEW
SCALE 1 / 2

PARTS LIST		
ITEM	QTY	PART NUMBER
1	1	AXLE
2	1	BUSHING
3	1	HUB
4	1	COLLAR
5	2	SIDE PLATE
6	1	WHEEL
7	6	RIVET
8	2	WASHER
9	1	SPRING PIN

DDGT
DIGITAL DESIGN
GRAPHICS
TECHNOLOGY
WWW.DDGT.NET

GENERAL NOTES:
ALL FILLETS R.12"
UNLESS OTHERWISE
NOTED
ALL CHAMFERS ARE .06"
X 45° UNLESS
OTHERWISE NOTE



TOLERANCES UNLESS SPECIFIED:
DECIMAL INCHES:
X = ±.020
XX = ±.010
XXX = ±.005
FRACTIONAL: ±1/64"
ANGLES ±1 DEGREE
SURFACES ³²✓

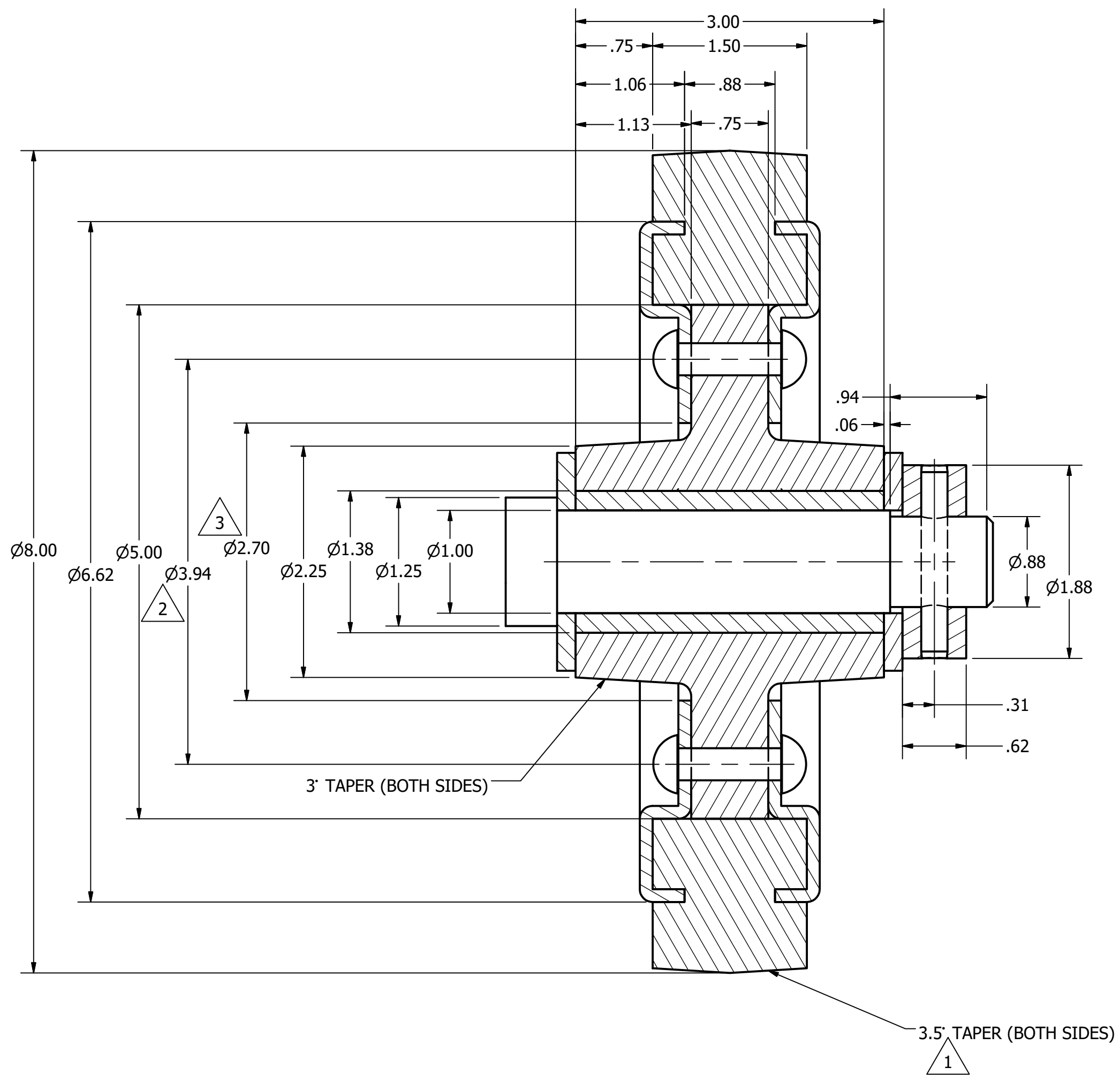
CLASS:	DDGT 121
ASSIGNMENT #:	11
INVENTOR DRAWING NAME:	WHEEL ASSEMBLY
FIG #:	11-55
MANAGER:	G. STROMMEN
DRAFTER:	Ken
DATE:	2/27/2023
SCALE:	AS NOTED
PAGE #:	2 OF 3

LEGEND:
∅ DIAMETER
R RADIUS
° DEGREES

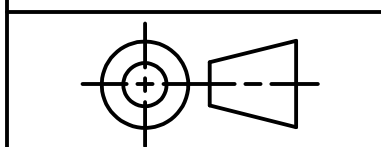
PARTS LIST		
ITEM	QTY	PART NUMBER
1	1	AXLE
2	1	BUSHING
3	1	HUB
4	1	COLLAR
5	2	SIDE PLATE
6	1	WHEEL
7	6	RIVET
8	2	WASHER
9	1	SPRING PIN



GENERAL NOTES:
 ALL FILLETS R.12"
 UNLESS OTHERWISE NOTED
 ALL CHAMFERS ARE .06"
 X 45° UNLESS OTHERWISE NOTE



WHEEL SECTION VIEW
 SCALE 1 : 1



TOLERANCES UNLESS SPECIFIED:
 DECIMAL INCHES:
 X = ±.020
 XX = ±.010
 XXX = ±.005
 FRACTIONAL ±1/64"
 ANGLES ±1 DEGREE
 SURFACES ³²✓

CLASS: DDGT 121

ASSIGNMENT #: 11

INVENTOR DRAWING NAME:
 WHEEL ASSEMBLY

FIG #: 11-55

MANAGER: G. STROMMEN

DRAFTER: Ken

DATE: 2/27/2023

SCALE: AS NOTED

PAGE #: 3 OF 3

LEGEND:
 Ø DIAMETER
 R RADIUS
 ° DEGREES

REV	DATE	DESCRIPTION	APPROVED	SHEET
3	3/11/2023	INSIDE DIAMETER OF RING CHANGED FROM Ø2.80 TO Ø2.70	G.STROMMEN	3
2	3/11/2023	CENTERLINE DIAMETER FOR RIVET PATTERN CHANGED FROM Ø3.5 TO Ø3.94	G.STROMMEN	3
1	3/11/2023	TAPER ANGLE ON WHEEL CHANGED FROM 5° TO 3.5°	G.STROMMEN	3
REVISION HISTORY				