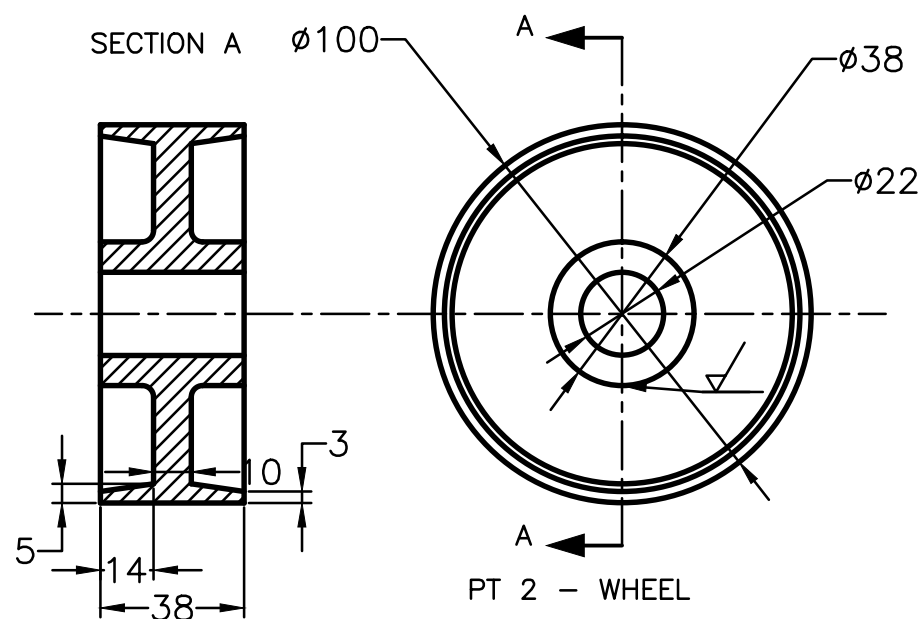
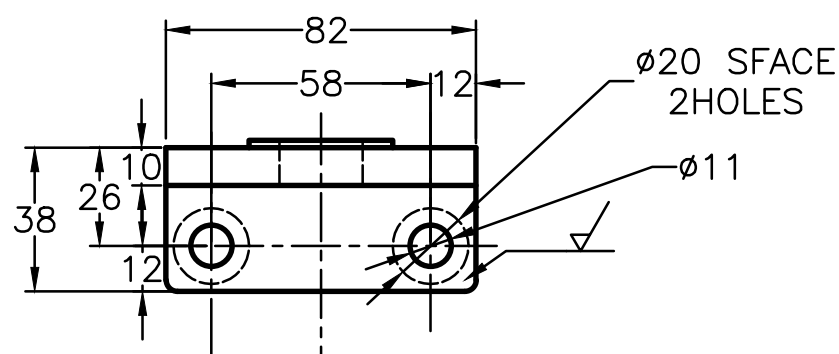


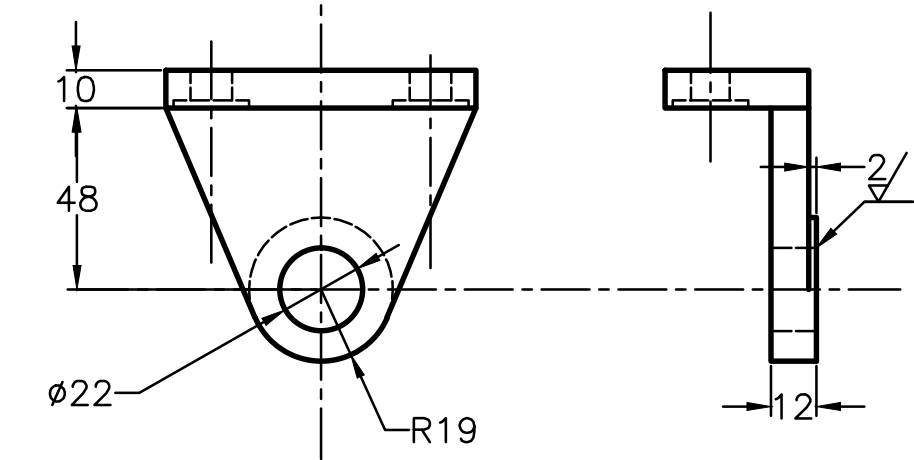
PT 1 - TOP PLATE



PT 2 - WHEEL

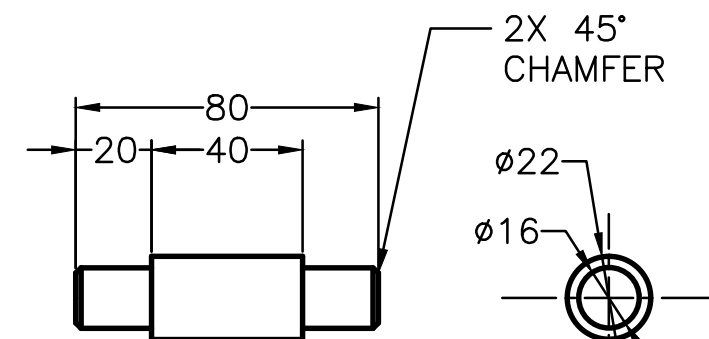


PT 3 - AXLE SUPPORT

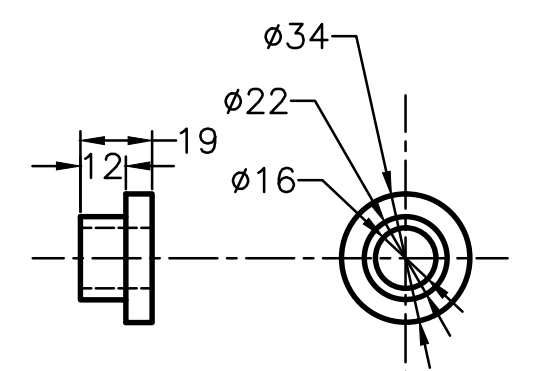


| PART LIST | | | |
|-----------|-----|--------------|----------------|
| ITEM | QTY | PART NAME | MATERIAL |
| PART 1 | 1 | TOP PLATE | MALLEABLE IRON |
| PART 2 | 1 | WHEEL | MALLEABLE IRON |
| PART 3 | 2 | AXLE SUPPORT | MALLEABLE IRON |
| PART 4 | 1 | AXLE | SCALE 1020 |
| PART 5 | 2 | BUSHING | BRONZE |

| TABLE | |
|-------|--------------|
| FIT | BETWEEN PART |
| H8/f7 | 4 AND 5 |
| H7/p6 | 3 AND 5 |
| H8/f7 | 2 AND 4 |



PT 4 - AXLE



PT 5 - BUSHING

FASTEN ASSEMBLY TO A 6mm STEEL PLATE BY FOUR M 10 X 40mm LG HEX HD BOLTS, NUTS AND LOCK WASHERS. SHOW THE STEEL PLATE IN PHANTOM LINES.

ROUNDS AND FILLETS R 3

| | | | |
|---------------------------------------|-----------------|-----------------|---------|
| DIGITAL DESIGN GRAPHIC AND TECHNOLOGY | NAME: J.VALADAO | DWG NAME: | SHEET # |
| | COURSE: DDGT | CASTER FIG 9-51 | |
| | DATE: 16/09/10 | SCALE: 1:2 | |