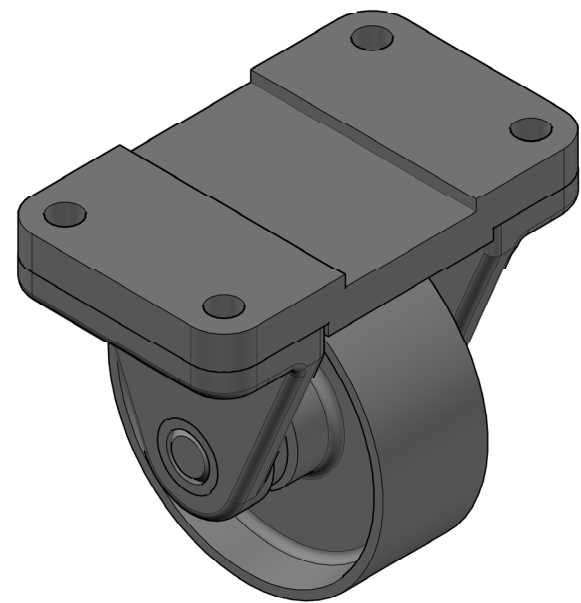
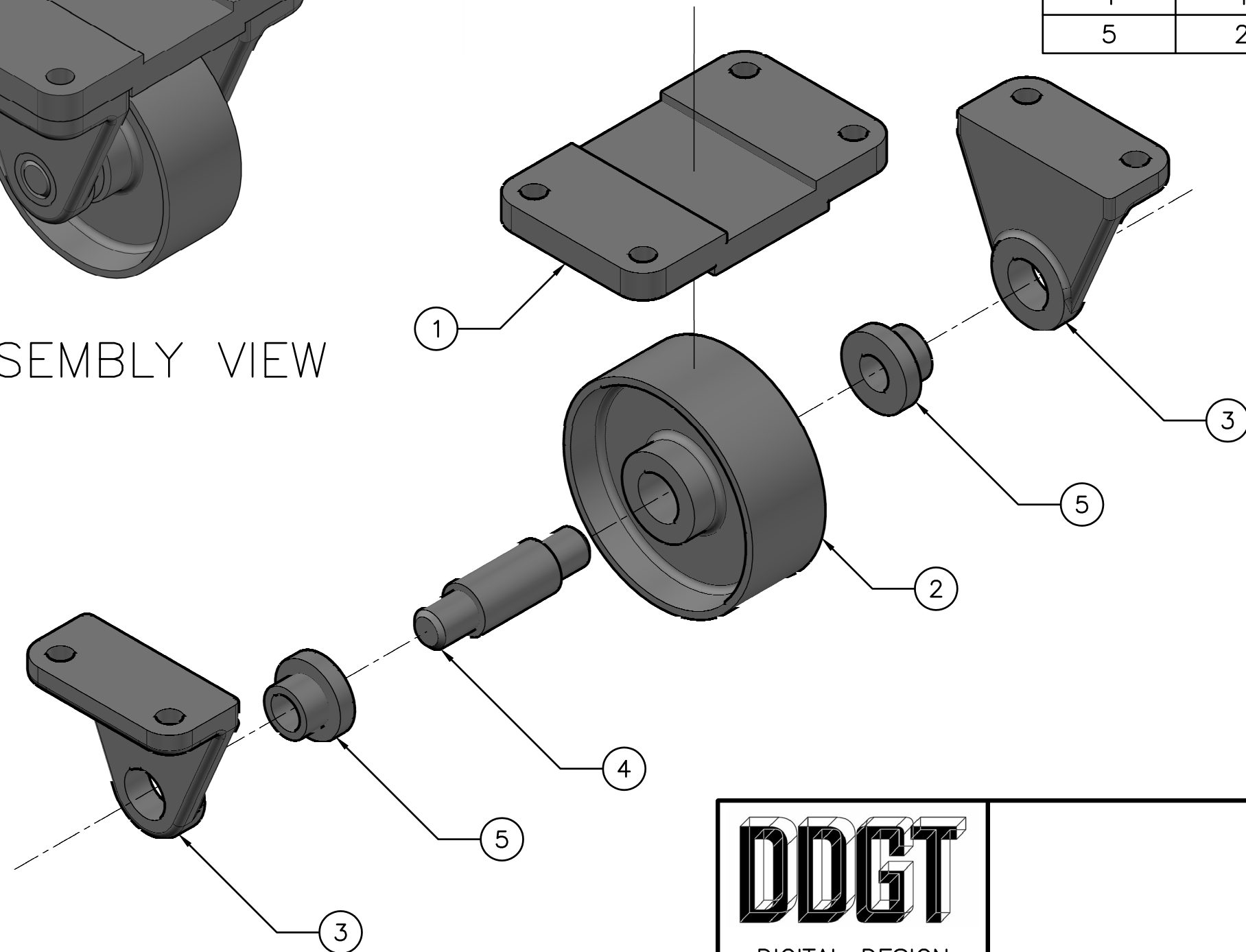


PARTS LIST			
ITEM	QTY	PART NAME	MATERIAL
1	1	TOP PLATE	MALLEABLE IRON
2	1	WHEEL	MALLEABLE IRON
3	2	AXLE SUPPORT	MALLEABLE IRON
4	1	AXLE	SAE 1020
5	2	BUSHING	BRONZE



ASSEMBLY VIEW



EXPLODED ASSEMBLY VIEW

METRIC

LEGEND:

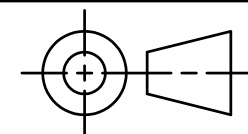
- ° DEGREES
- ∅ DIAMETER
- R RADIUS
- SPOTFACE

FIT	BETWEEN PARTS
H8/f7	4 AND 5
H7/p6	3 AND 5
H8/f7	2 AND 4



DIGITAL DESIGN
GRAPHICS
TECHNOLOGY

WWW.DDGT.NET



TOLERANCES UNLESS SPECIFIED:
DECIMAL INCHES:
X = ±.020
XX = ±.010
XXX = ±.005
FRACTIONAL ±1/64"
ANGLES ±1 DEGREE
SURFACES 32/

COURSE: DDGT 120

AUTOCAD DRAWING NAME:

CASTER

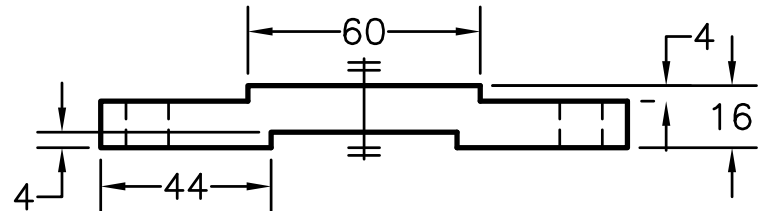
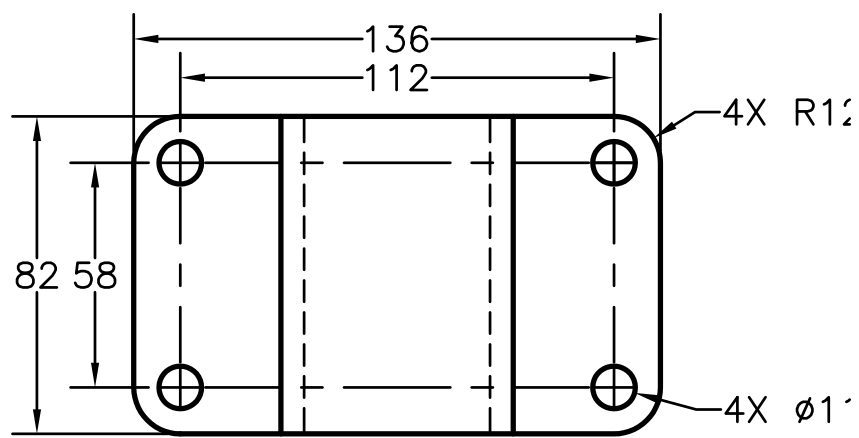
FIG#: 9-51

DRAFTER: L.CARR

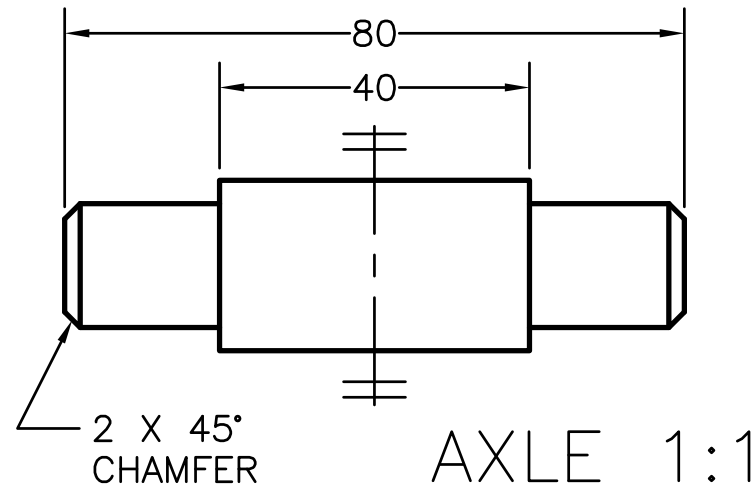
DATE: 10/28/2015

SCALE: 1:2

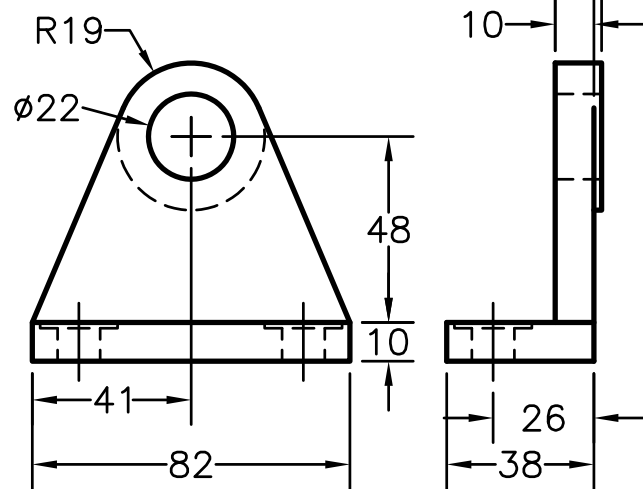
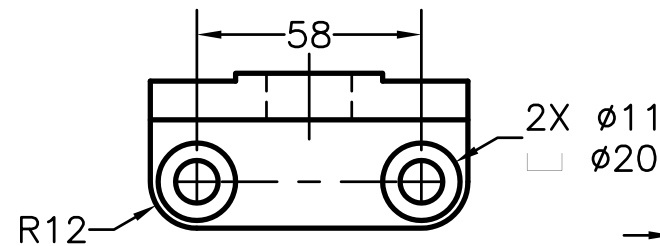
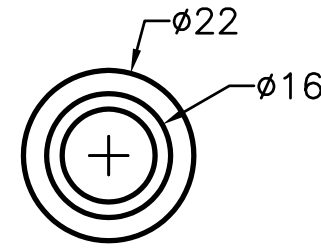
PAGE #: 1 OF 2



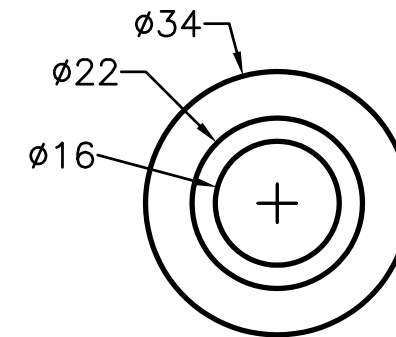
TOP PLATE 1:2



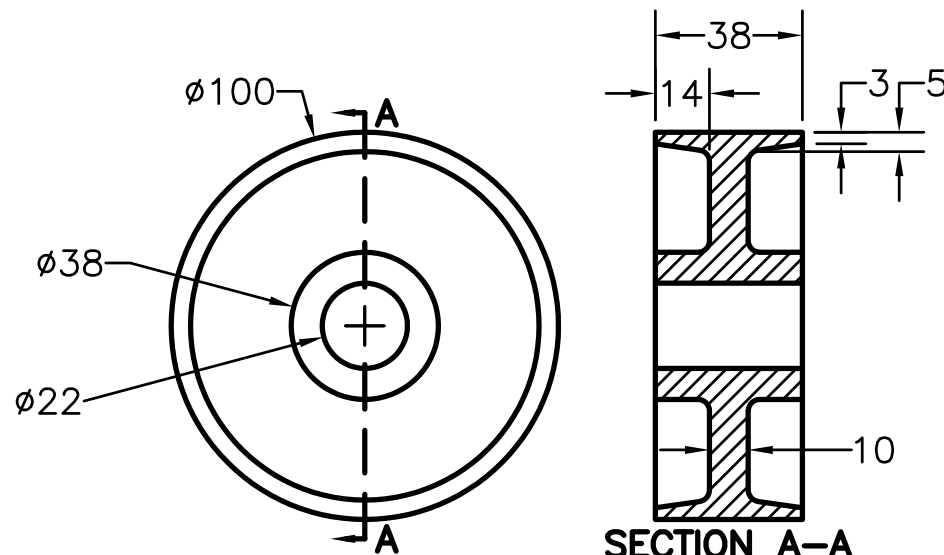
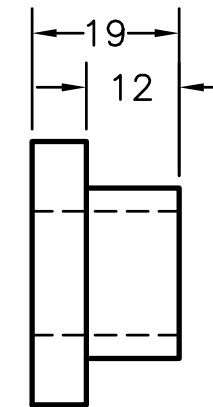
AXLE 1:1



AXLE SUPPORT 1:2



BUSHING 1:1



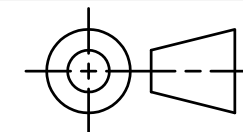
WHEEL 1:2

PARTS LIST		
ITEM	QTY	PART NAME
1	1	TOP PLATE
2	1	WHEEL
3	2	AXLE SUPPORT
4	1	AXLE
5	2	BUSHING

METRIC

LEGEND:
 ° DEGREES
 ø DIAMETER
 R RADIUS
 □ SPOTFACE

FIT	BETWEEN PARTS
H8/f7	4 AND 5
H7/p6	3 AND 5
H8/f7	2 AND 4



TOLERANCES UNLESS SPECIFIED:
 DECIMAL INCHES:
 X = ±.020
 XX = ±.010
 XXX = ±.005
 FRACTIONAL ±1/64"
 ANGLES ±1 DEGREE
 SURFACES 32/

COURSE:	DDGT 120
AUTOCAD DRAWING NAME:	CASTER
FIG#:	9-51
DRAFTER:	L.CARR
DATE:	10/28/2015
SCALE:	AS NOTED
PAGE #:	2 OF 2



DIGITAL DESIGN
 GRAPHICS
 TECHNOLOGY

WWW.DDGT.NET

ROUNDS AND FILLETS R3