

PARTS LIST				
ITEM	QTY	PART NUMBER	MATERIAL	DESCRIPTION
1	2	SIDE PLATE SUB ASSEMBLY		
1.1	1	SIDE PLATE	MILD STEEL	
1.2	1	GUIDE	CAST IRON	
1.3	2	RIVET	STANDARD	BOTTON HEAD, Ø10 X 60 LONG
2	1	AXLE	COLD ROLLED STEEL	
3	1	HOOK	MILD STEEL	10 THICK
4	44	ROLLER BEARING	COLD ROLLED STEEL	Ø10 X 38 LONG
5	4	WHEEL	CAST IRON	
6	4	WHEEL AXLE	COLD ROLLED STEEL	
7	12	ADJUSTING WASHER	STANDARD	Ø26ID X Ø44OD X 4 THICK
8	4	WASHER	STANDARD	Ø26ID X Ø65OD X 3 THICK
9	4	LOCKNUT	STANDARD	M16 x 2 (PREVAILING TORQUE INSERT-TYPE)
10	6	COTTER PIN	STANDARD	Ø6 X 40 LONG

GENERAL NOTES:



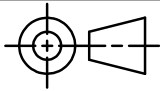
TROLLEY TO BE MOUNTED ON AN S200 X 34 BEAM
 ALL CHAMFERS ARE 2 X 2 UNLESS OTHERWISE NOTED

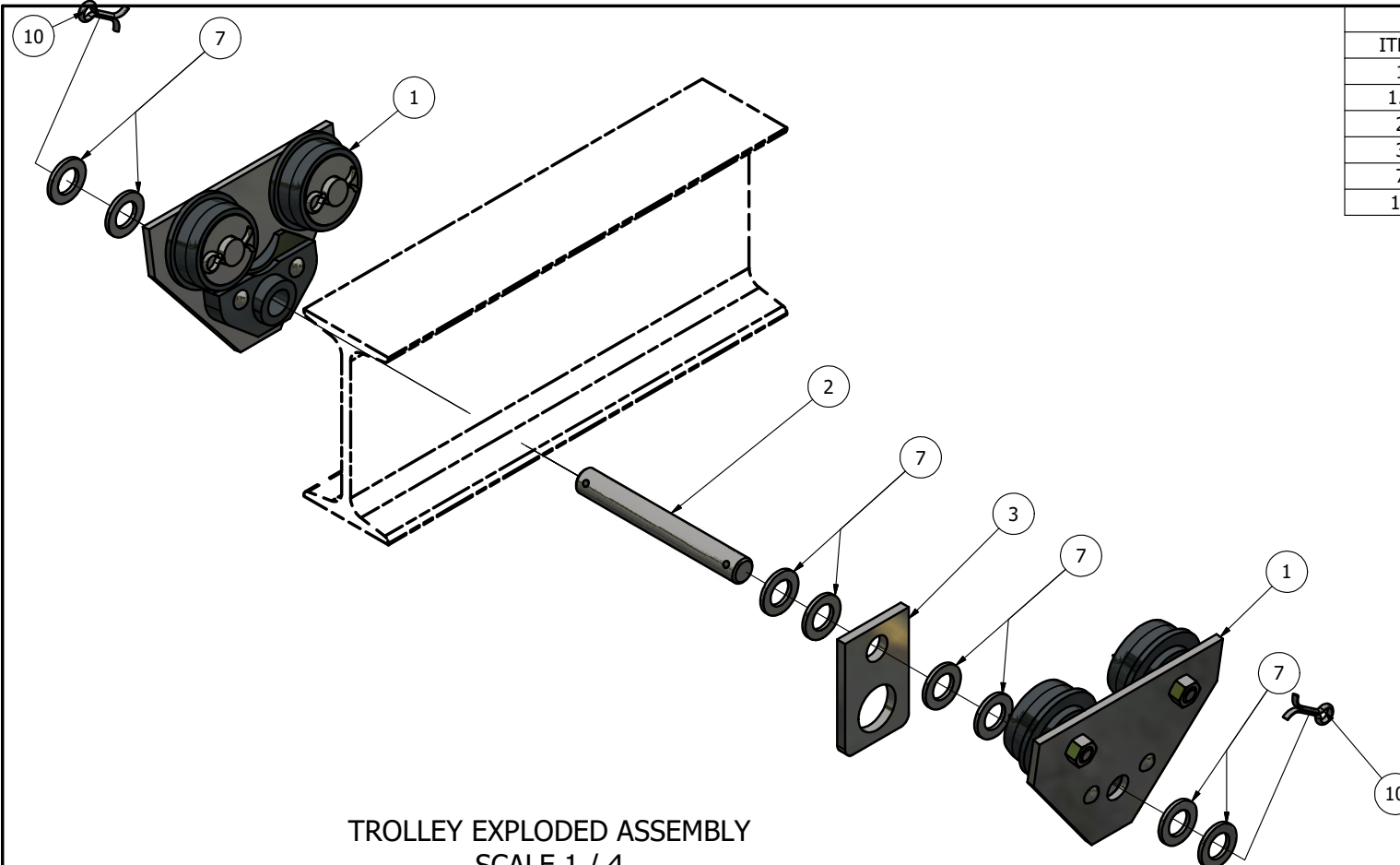
LEGEND:

- Ø DIAMETER
- R RADIUS
- ° DEGREES

TROLLEY ASSEMBLY
 SCALE 1 / 2

METRIC

 DIGITAL DESIGN GRAPHICS TECHNOLOGY WWW.DDGT.NET	 Laisha Landa Architecture & design 707-787-41-01 laisha.landa55@yahoo.com	 TOLERANCES UNLESS SPECIFIED: MILLIMETERS: WHOLE NUMBER = ±.5 X = ±.25 XX = ±.12 ANGLES ±1 DEGREE SURFACES $\sqrt{\text{32}}$	COURSE: DDGT120
			INVENTOR DRAWING NAME: TROLLEY
			FIG #: 14-83 DRAFTER: L.LANDA DATE: 12/13/2020 SCALE: AS NOTED PAGE #: 1 OF 6



PARTS LIST		
ITEM	QTY	PART NUMBER
1	2	SIDE PLATE SUB ASSEMBLY
1.2	1	GUIDE
2	1	AXLE
3	1	HOOK
7	12	ADJUSTING WASHER
10	6	COTTER PIN

TROLLEY EXPLODED ASSEMBLY
SCALE 1 / 4

LEGEND:
 Ø DIAMETER
 R RADIUS
 ° DEGREES

METRIC

GENERAL NOTES:

TROLLEY TO BE MOUNTED ON AN S200 X 34 BEAM

ALL CHAMFERS ARE 2 X 2 UNLESS OTHERWISE NOTED



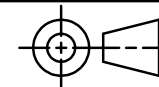
DIGITAL DESIGN
 GRAPHICS
 TECHNOLOGY

WWW.DDGT.NET



Laisha Landa
 Architecture & design

707-787-41-01
 laisha.landa55@yahoo.com



TOLERANCES UNLESS SPECIFIED:
 MILLIMETERS:
 WHOLE NUMBER = ±.5
 X = ±.25
 XX = ±.12
 ANGLES ±1 DEGREE
 SURFACES 32 ✓

COURSE: DDGT120

INVENTOR DRAWING NAME:
 TROLLEY

FIG #: 14-83

DRAFTER: L.LANDA

DATE: 12/13/2020

SCALE: AS NOTED

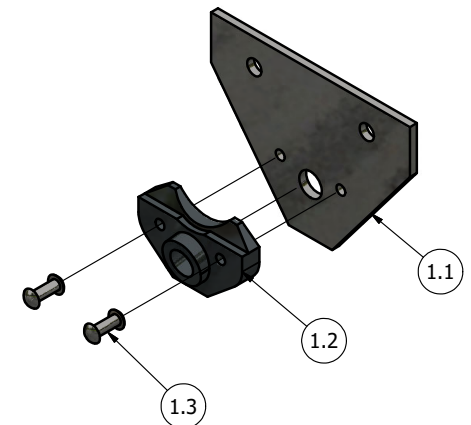
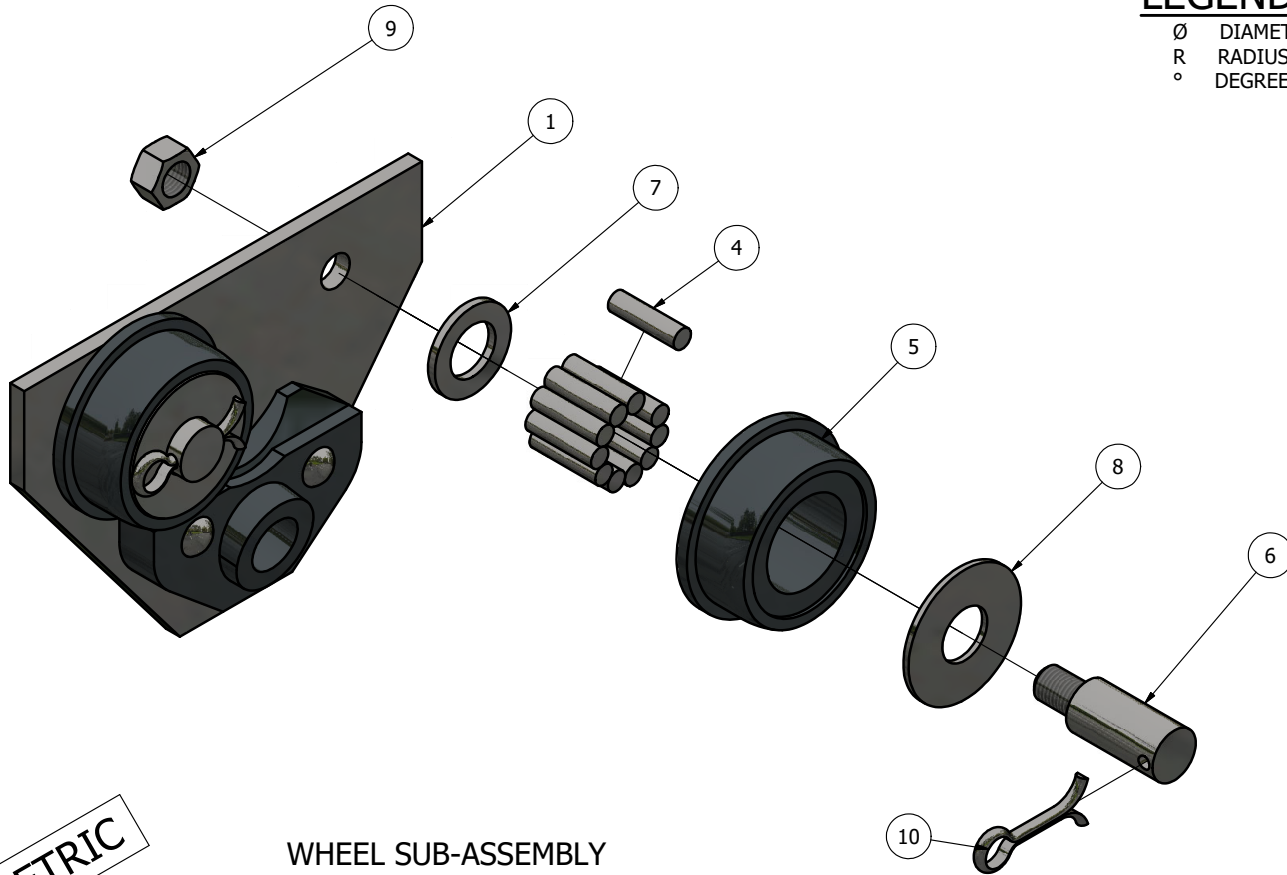
PAGE #: 2 OF 6

LEGEND:

- ∅ DIAMETER
- R RADIUS
- ° DEGREES

PARTS LIST

ITEM	QTY	PART NUMBER
1	2	SIDE PLATE SUB ASSEMBLY
1.1	1	SIDE PLATE
1.2	1	GUIDE
1.3	2	RIVET
4	44	ROLLER BEARING
5	4	WHEEL
6	4	WHEEL AXLE
7	12	ADJUSTING WASHER
8	4	WASHER
9	4	LOCKNUT
10	6	COTTER PIN



METRIC

WHEEL SUB-ASSEMBLY
SCALE 1 / 2

SIDE PLATE SUB-ASSEMBLY
SCALE 1 / 4

GENERAL NOTES:

TROLLEY TO BE MOUNTED ON AN S200 X 34 BEAM
ALL CHAMFERS ARE 2 X 2 UNLESS OTHERWISE NOTED



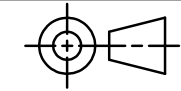
DIGITAL DESIGN
GRAPHICS
TECHNOLOGY

WWW.DDGT.NET



Laisha Landa
Architecture & design

707-787-41-01
laisha.landa55@yahoo.com



TOLERANCES UNLESS SPECIFIED:
MILLIMETERS:
WHOLE NUMBER = ±.5
X = ±.25
XX = ±.12
ANGLES ±1 DEGREE
SURFACES 32 ✓

COURSE: DDGT120

INVENTOR DRAWING NAME:
TROLLEY

FIG #: 14-83

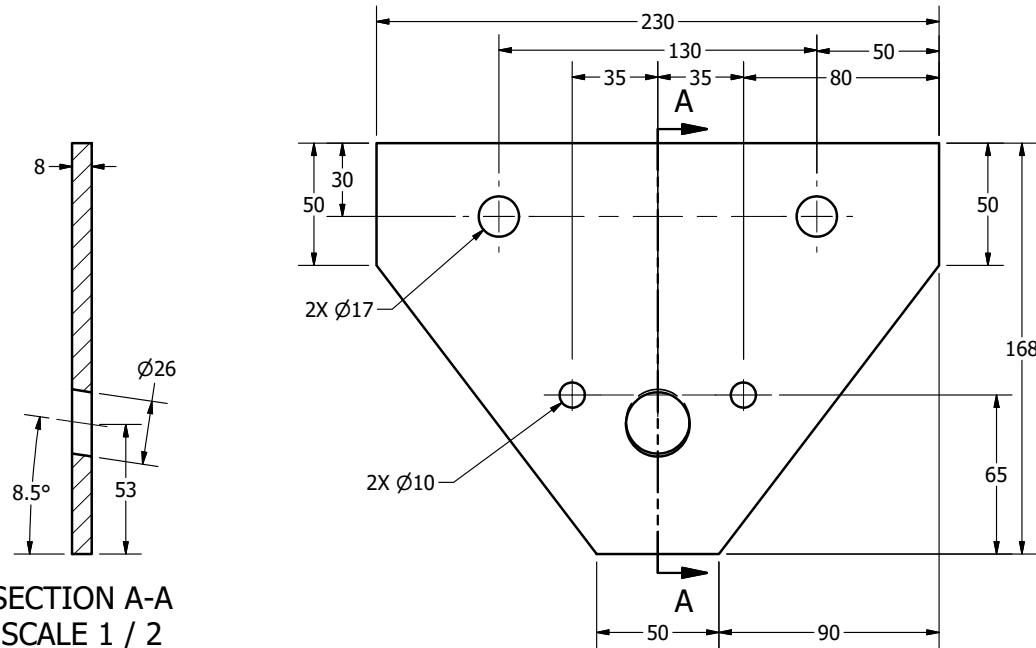
DRAFTER: L.LANDA

DATE: 12/13/2020

SCALE: AS NOTED

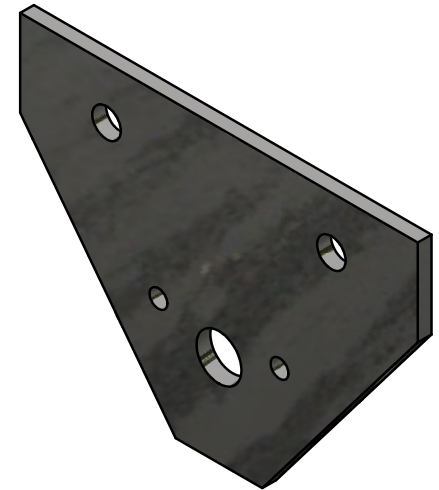
PAGE #: 3 OF 6

PARTS LIST		
ITEM	QTY	PART NUMBER
1.1	2	SIDE PLATE



SECTION A-A
SCALE 1 / 2

SIDE PLATE
SCALE 1 / 2



LEGEND:
 Ø DIAMETER
 R RADIUS
 ° DEGREES

METRIC

GENERAL NOTES:

TROLLEY TO BE MOUNTED ON AN S200 X 34 BEAM
 ALL CHAMFERS ARE 2 X 2 UNLESS OTHERWISE NOTED

DDGT

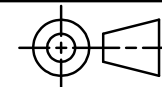
DIGITAL DESIGN
 GRAPHICS
 TECHNOLOGY

WWW.DDGT.NET



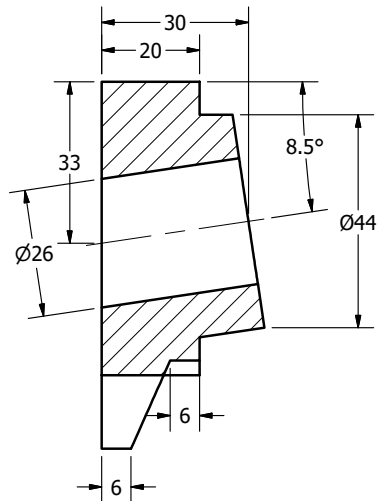
Laisha Landa
 Architecture & design

707-787-41-01
 laisha.landa55@yahoo.com

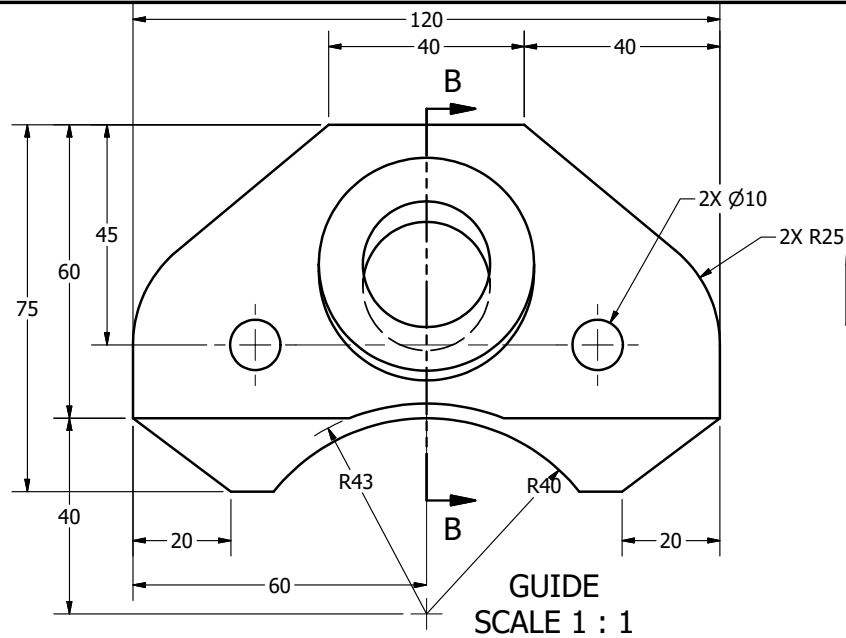


TOLERANCES UNLESS SPECIFIED:
 MILLIMETERS:
 WHOLE NUMBER = ±.5
 X = ±.25
 XX = ±.12
 ANGLES ±1 DEGREE
 SURFACES 32 ✓

COURSE:	DDGT120
INVENTOR DRAWING NAME:	TROLLEY
FIG #:	14-83
DRAFTER:	L.LANDA
DATE:	12/13/2020
SCALE:	AS NOTED
PAGE #:	4 OF 6

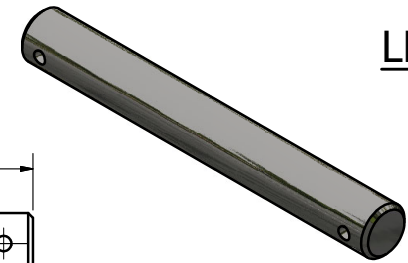
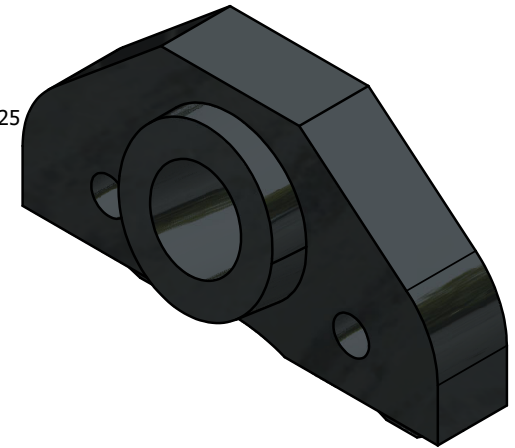


SECTION B-B
SCALE 1 : 1

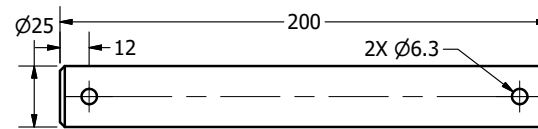


GUIDE
SCALE 1 : 1

PARTS LIST		
ITEM	QTY	PART NUMBER
1.2	2	GUIDE
2	1	AXLE



LEGEND:
 Ø DIAMETER
 R RADIUS
 ° DEGREES



AXLE
SCALE 1 / 2

GENERAL NOTES:

TROLLEY TO BE MOUNTED ON AN S200 X 34 BEAM
 ALL CHAMFERS ARE 2 X 2 UNLESS OTHERWISE NOTED

METRIC



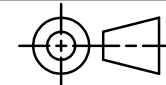
DIGITAL DESIGN
 GRAPHICS
 TECHNOLOGY

WWW.DDGT.NET



Laisha Landa
 Architecture & design

707-787-41-01
 laisha.landa55@yahoo.com



TOLERANCES UNLESS SPECIFIED:
 MILLIMETERS:
 WHOLE NUMBER = ±.5
 X = ±.25
 XX = ±.12
 ANGLES ±1 DEGREE
 SURFACES 32 ✓

COURSE: DDGT120

INVENTOR DRAWING NAME:
 TROLLEY

FIG #: 14-83

DRAFTER: L.LANDA

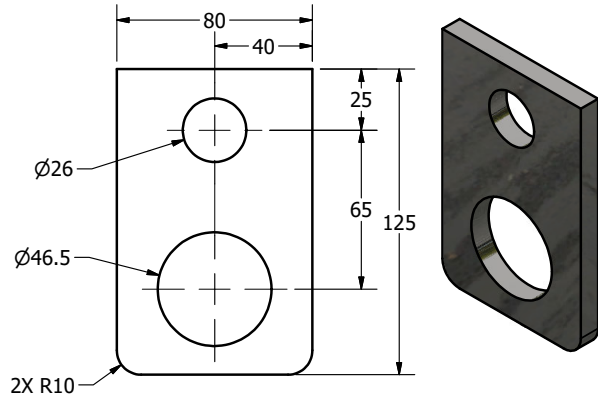
DATE: 12/13/2020

SCALE: AS NOTED

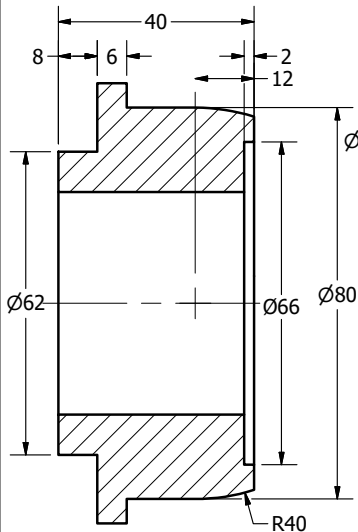
PAGE #: 5 OF 6

LEGEND:

- ∅ DIAMETER
- R RADIUS
- ° DEGREES



HOOK
SCALE 1 / 2

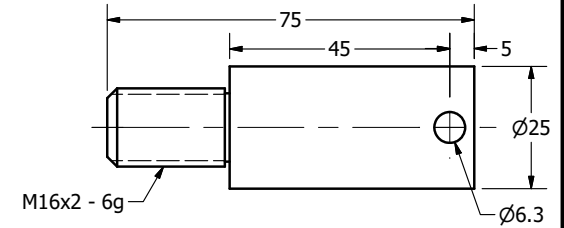
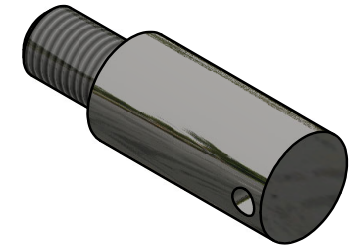


SECTION C-C
SCALE 1 : 1

METRIC

WHEEL
SCALE 1 : 1

PARTS LIST		
ITEM	QTY	PART NUMBER
3	1	HOOK
5	4	WHEEL
6	4	WHEEL AXLE



WHEEL AXLE
SCALE 1 : 1

GENERAL NOTES:

TROLLEY TO BE MOUNTED ON AN S200 X 34 BEAM

ALL CHAMFERS ARE 2 X 2 UNLESS OTHERWISE NOTED



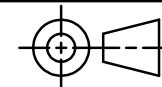
DIGITAL DESIGN
GRAPHICS
TECHNOLOGY

WWW.DDGT.NET



Laisha Landa
Architecture & design

707-787-41-01
laisha.landa55@yahoo.com



TOLERANCES UNLESS SPECIFIED:
MILLIMETERS:
WHOLE NUMBER = ±.5
X = ±.25
XX = ±.12
ANGLES ±1 DEGREE
SURFACES 32 ✓

COURSE:	DDGT120
INVENTOR DRAWING NAME:	TROLLEY
FIG #:	14-83
DRAFTER:	L.LANDA
DATE:	12/13/2020
SCALE:	AS NOTED
PAGE #:	6 OF 6