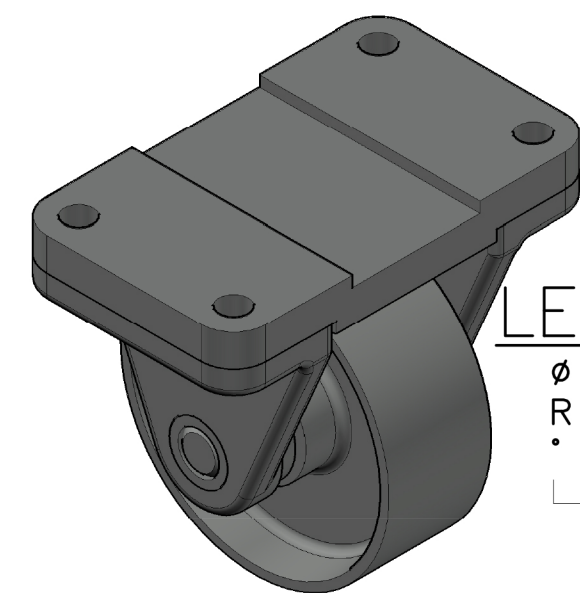
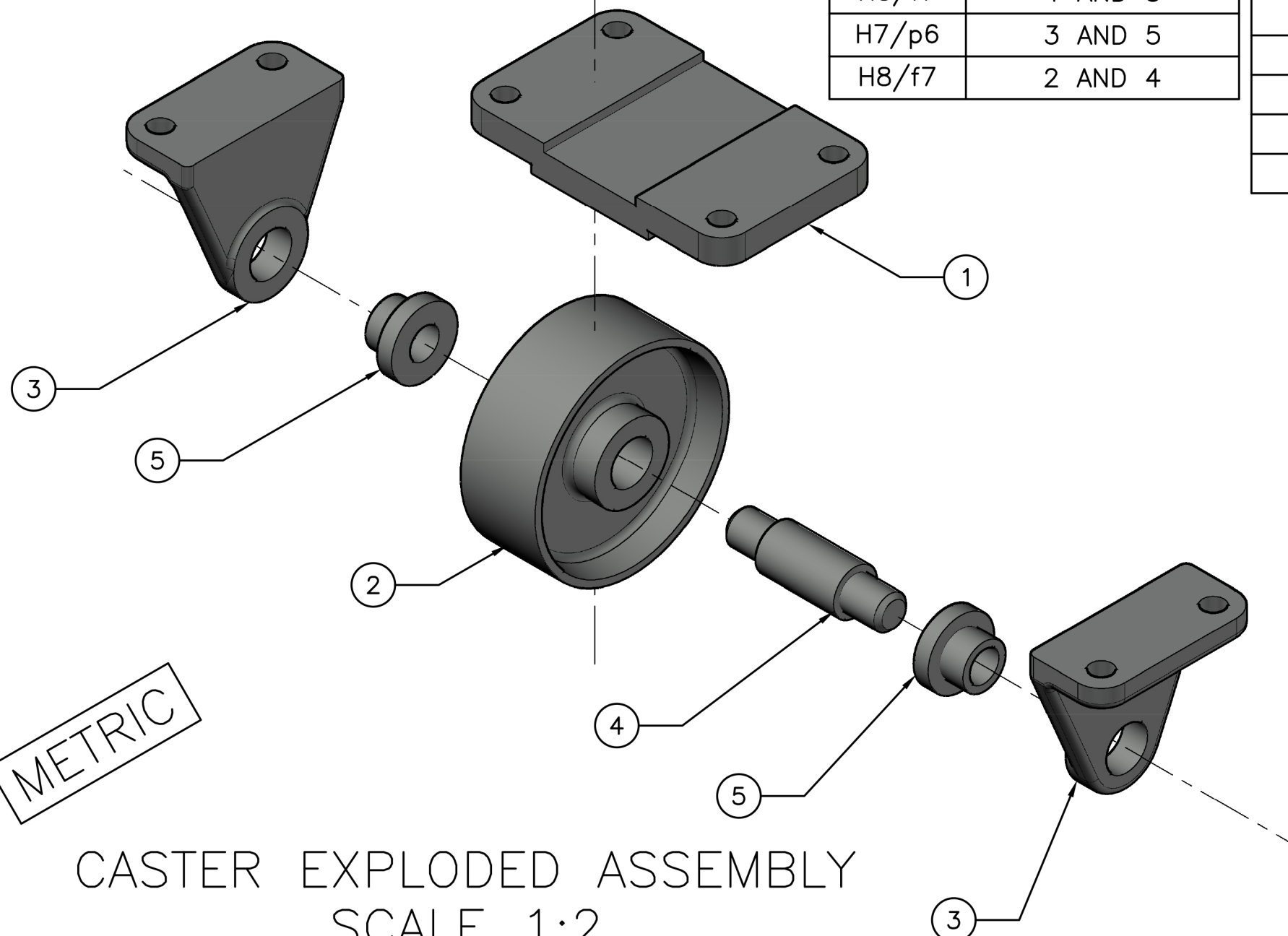


PARTS LIST

ITEM	QTY.	PART NAME	MATERIAL
1	1	TOP PLATE	MALLEABLE IRON
2	1	WHEEL	MALLEABLE IRON
3	2	AXLE SUPPORT	MALLEABLE IRON
4	1	AXLE	SAE 1020
5	2	BUSHING	BRONZE

FIT	BETWEEN PARTS
H8/f7	4 AND 5
H7/p6	3 AND 5
H8/f7	2 AND 4



LEGEND:
 ∅ DIAMETER
 R RADIUS
 ° DEGREES
 □ SPOTFACE

METRIC

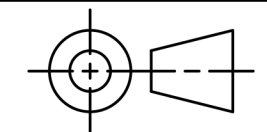
CASTER EXPLODED ASSEMBLY
SCALE 1:2

CASTER ASSEMBLY
SCALE 1:2

GENERAL NOTES:

- FASTEN ASSEMBLY TO A 6MM STEEL PLATE BY FOUR M10 X 40MM LARGE HEX HEAD BOLTS, NUTS, AND LOCK WASHERS.
- ROUNDS AND FILLETS R3.

DDGT
 DIGITAL DESIGN
 GRAPHICS
 TECHNOLOGY
 WWW.DDGT.NET

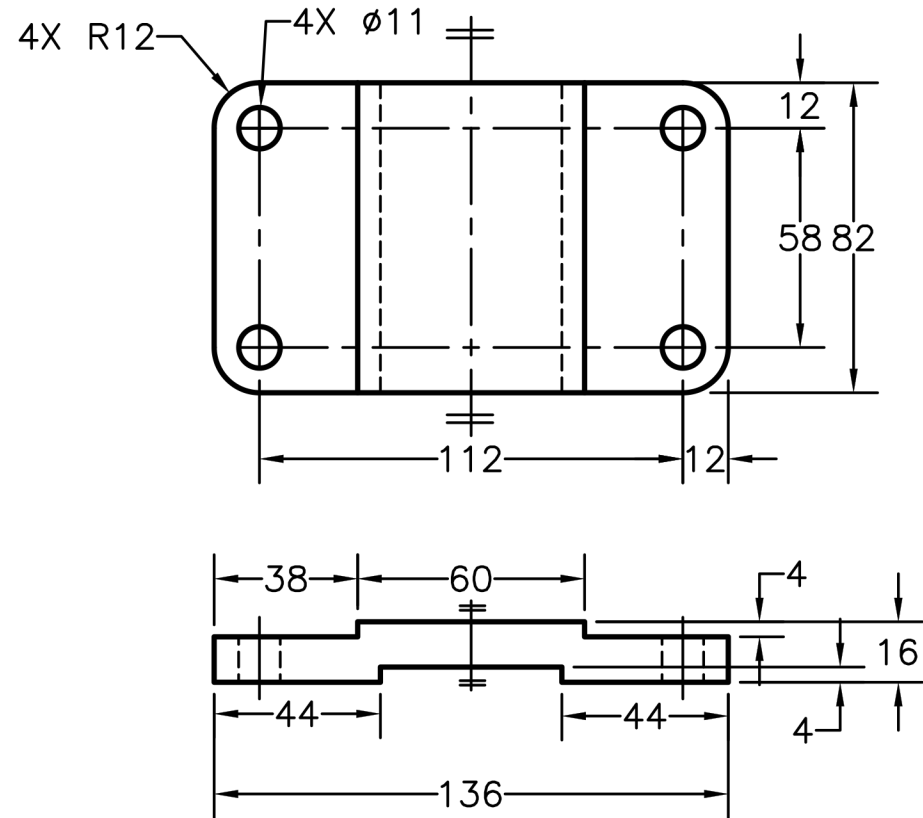


TOLERANCES UNLESS SPECIFIED:
 MILLIMETERS:
 WHOLE NUMBERS = ±.5
 X = ±.25
 XX = ±.12
 ANGLES ±1 DEGREE
 SURFACES 32/

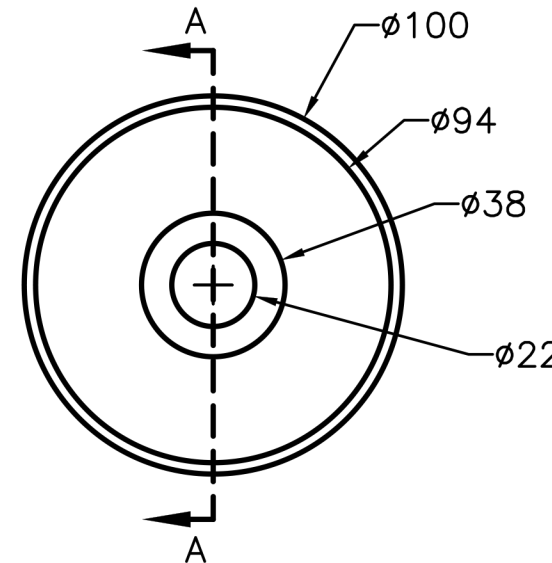
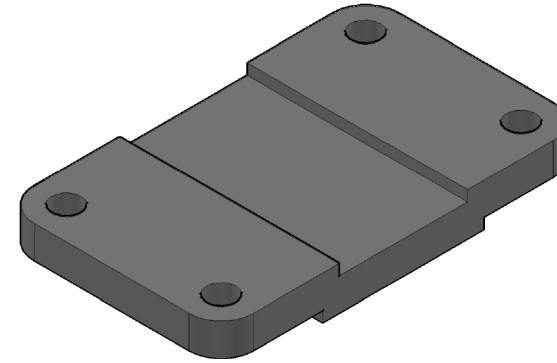
COURSE:	DDGT 120
AUTOCAD DRAWING NAME:	CASTER
FIG #:	9-51
DRAFTER:	L. LANDA
DATE:	4/13/2021
SCALE:	AS NOTED
PAGE #:	1 OF 3

PARTS LIST

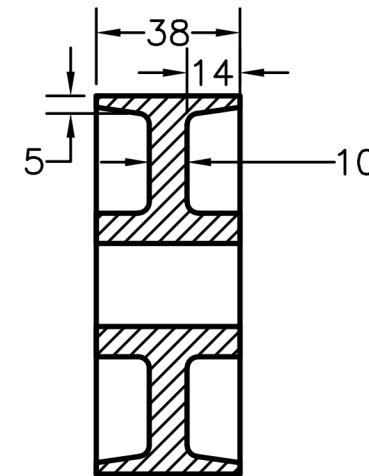
ITEM	QTY.	PART NAME
1	1	TOP PLATE
2	1	WHEEL



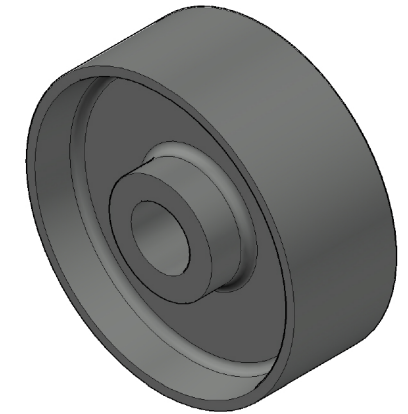
TOP PLATE
SCALE 1:2



WHEEL
SCALE 1:2



SECTION
A-A



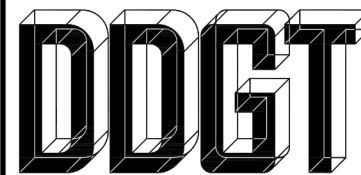
LEGEND:

- ϕ DIAMETER
- R RADIUS
- $^\circ$ DEGREES
-  SPOTFACE

METRIC

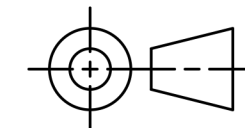
GENERAL NOTES:

- FASTEN ASSEMBLY TO A 6MM STEEL PLATE BY FOUR M10 X 40MM LARGE HEX HEAD BOLTS, NUTS, AND LOCK WASHERS.
- ROUNDS AND FILLETS R3.



DIGITAL DESIGN
GRAPHICS
TECHNOLOGY

WWW.DDGT.NET



TOLERANCES UNLESS SPECIFIED:
MILLIMETERS:
WHOLE NUMBERS = ± 0.5
X = ± 0.25
XX = ± 0.12
ANGLES ± 1 DEGREE
SURFACES $\sqrt{32}$

COURSE: DDGT 120

AUTOCAD DRAWING NAME:

CASTER

FIG #: 9-51

DRAFTER: L. LANDA

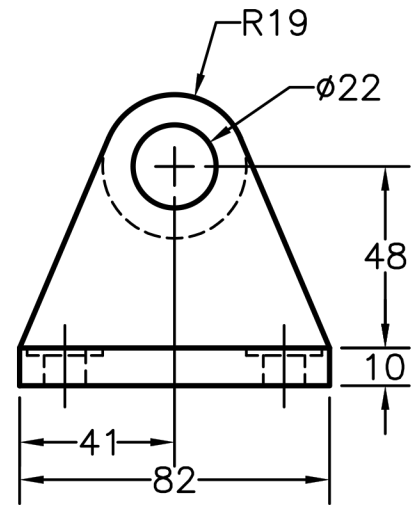
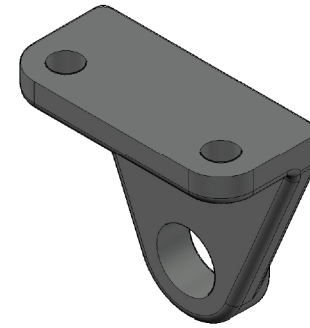
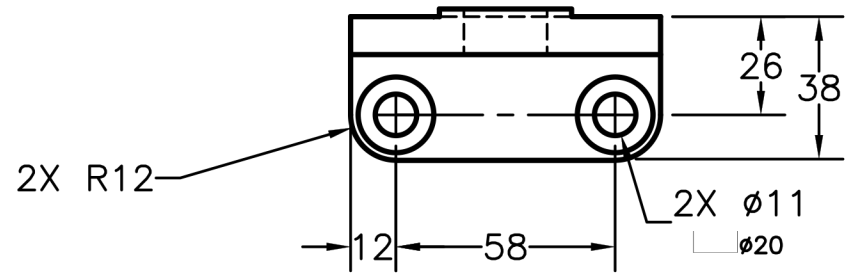
DATE: 4/13/2021

SCALE: AS NOTED

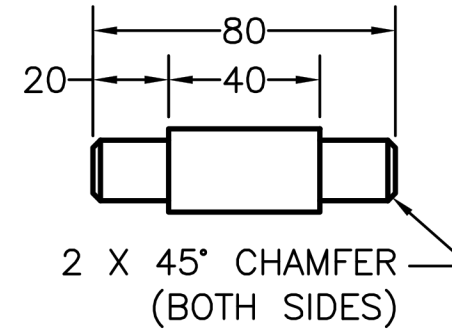
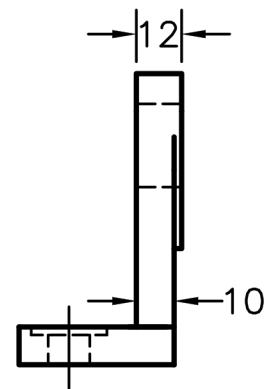
PAGE #: 2 OF 3

PARTS LIST

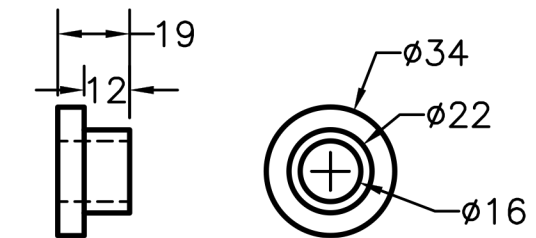
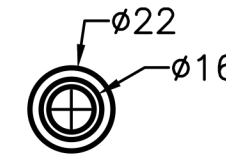
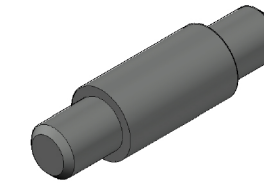
ITEM	QTY.	PART NAME
3	2	AXLE SUPPORT
4	1	AXLE
5	2	BUSHING



AXLE SUPPORT
SCALE 1:2



AXLE
SCALE 1:2



BUSHING
SCALE 1:2

LEGEND:

- ∅ DIAMETER
- R RADIUS
- ° DEGREES
- SPOTFACE

METRIC

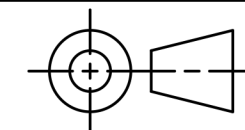
GENERAL NOTES:

- FASTEN ASSEMBLY TO A 6MM STEEL PLATE BY FOUR M10 X 40MM LARGE HEX HEAD BOLTS, NUTS, AND LOCK WASHERS.
- ROUNDS AND FILLETS R3.



DIGITAL DESIGN
GRAPHICS
TECHNOLOGY

WWW.DDGT.NET



TOLERANCES UNLESS SPECIFIED:
MILLIMETERS:
WHOLE NUMBERS = ±.5
X = ±.25
XX = ±.12

ANGLES ±1 DEGREE
SURFACES 32/

COURSE: DDGT 120

AUTOCAD DRAWING NAME:

CASTER

FIG #: 9-51

DRAFTER: L. LANDA

DATE: 4/13/2021

SCALE: AS NOTED

PAGE #: 3 OF 3