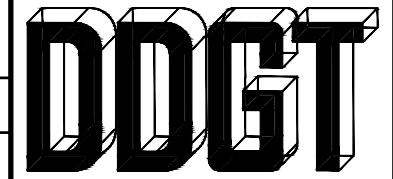


# PARTS LIST

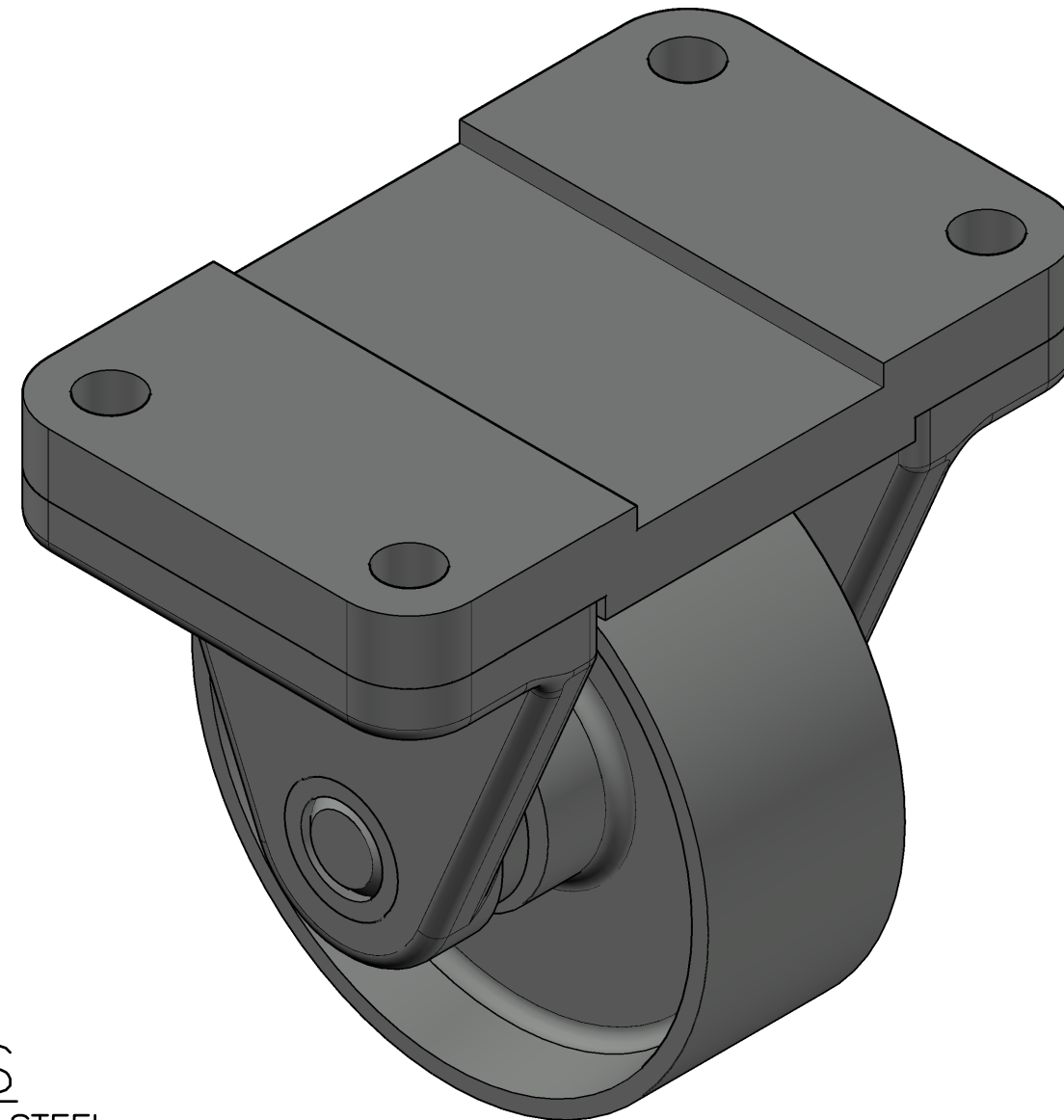
ITEM	QTY.	PART NAME	MATERIAL
1	1	TOP PLATE	MALLEABLE IRON
2	1	WHEEL	MALLEABLE IRON
3	2	AXLE SUPPORT	MALLEABLE IRON
4	1	AXLE	SAE 1020
5	2	BUSHING	BRONZE



DIGITAL DESIGN  
GRAPHICS  
TECHNOLOGY

WWW.DDGT.NET

METRIC



CASTER ASSEMBLY  
SCALE 1:1

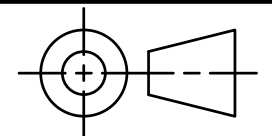
## GENERAL NOTES

FASTEN ASSEMBLY TO A 6mm STEEL PLATE BY FOUR M10 X 40mm LONG HEX HEAD BOLTS, NUTS, AND LOCK WASHERS.

ROUNDS AND FILLETS R3

## LEGEND

- ∅ DIAMETER
- R RADIUS
- DEGREES
- SPOTFACE/COUNTERBORE



TOLERANCES UNLESS SPECIFIED:  
MILLIMETERS = ±.5  
X = ±.25  
XX = ±.12

FRACTIONAL ±1/64"  
ANGLES ±1 DEGREE  
SURFACES 32/

CLASS: DDGT120

ASSIGNMENT #: 60

AUTOCAD DRAWING NAME:  
CASTER ASSEMBLY

FIG #: 9-51

MANAGER: G. STROMMEN

DRAFTER: L. RAMIREZ

DATE: 11/22/2023

SCALE: AS NOTED

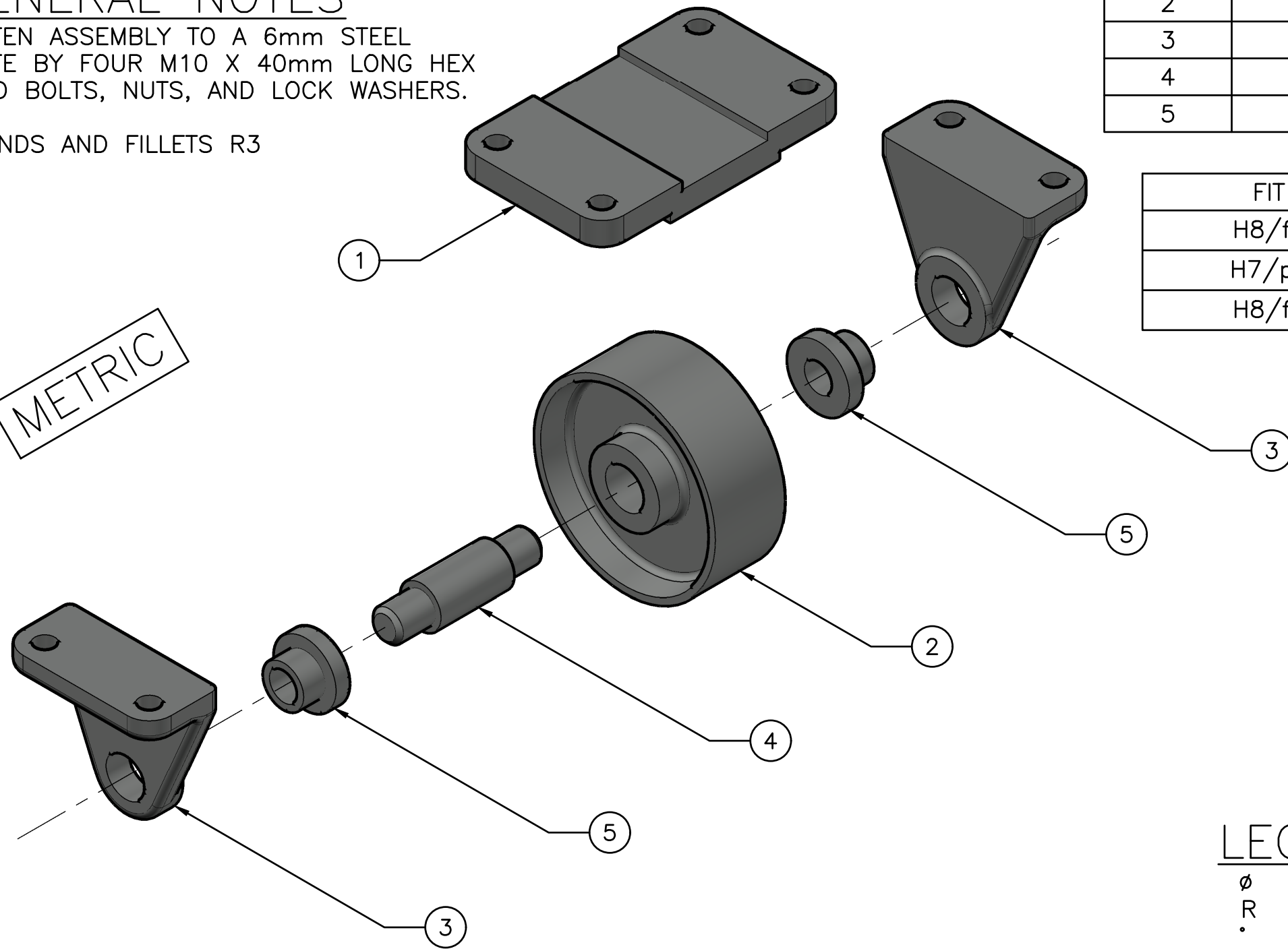
PAGE #: 1 OF 4

# GENERAL NOTES

FASTEN ASSEMBLY TO A 6mm STEEL PLATE BY FOUR M10 X 40mm LONG HEX HEAD BOLTS, NUTS, AND LOCK WASHERS.

ROUNDS AND FILLETS R3

METRIC

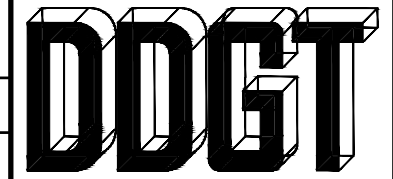


CASTER EXPLODED ASSEMBLY  
SCALE 1:2

# PARTS LIST

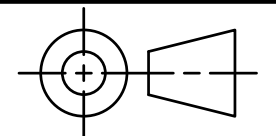
ITEM	QTY.	PART NAME
1	1	TOP PLATE
2	1	WHEEL
3	2	AXLE SUPPORT
4	1	AXLE
5	2	BUSHING

FIT	BETWEEN PARTS
H8/f7	4 AND 5
H7/p6	3 AND 5
H8/f7	2 AND 4



DIGITAL DESIGN  
GRAPHICS  
TECHNOLOGY

WWW.DDGT.NET



TOLERANCES UNLESS SPECIFIED:  
MILLIMETERS = ±.5  
X = ±.25  
XX = ±.12  
  
FRACTIONAL ±1/64"  
ANGLES ±1 DEGREE  
SURFACES 32/

CLASS: DDGT120

ASSIGNMENT #: 60

AUTOCAD DRAWING NAME:  
CASTER ASSEMBLY

FIG #: 9-51

MANAGER: G. STROMMEN

DRAFTER: L. RAMIREZ

DATE: 11/22/2023

SCALE: AS NOTED

PAGE #: 2 OF 4

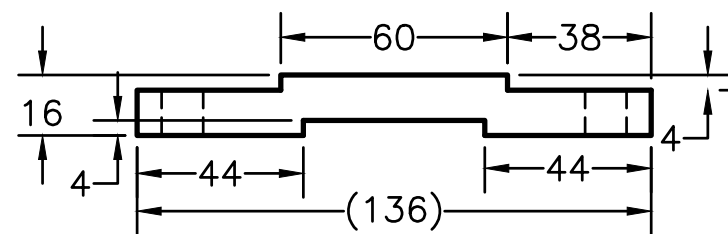
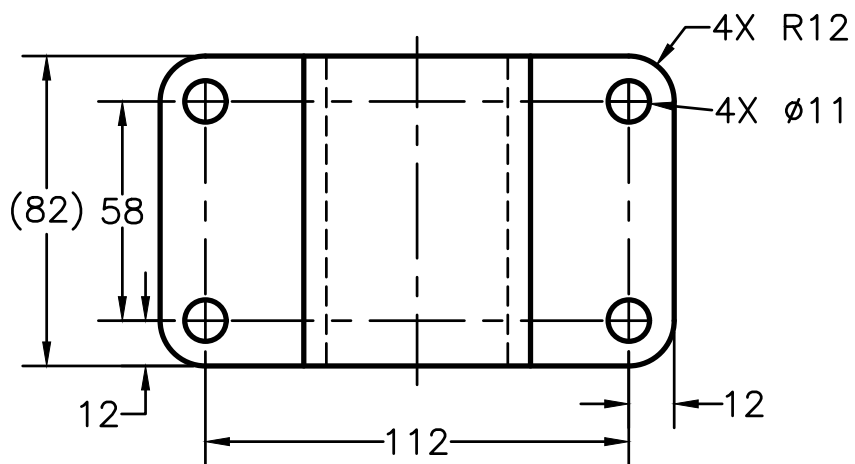
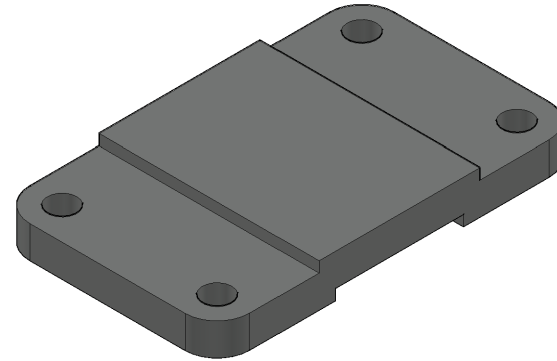
# LEGEND

- ∅ DIAMETER
- R RADIUS
- ° DEGREES
- SPOTFACE/COUNTERBORE

# GENERAL NOTES

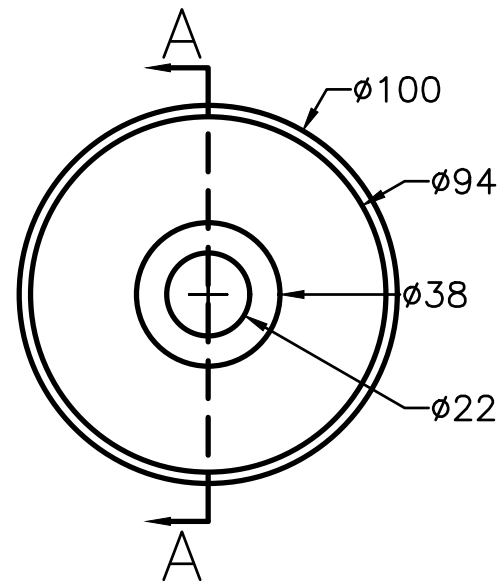
FASTEN ASSEMBLY TO A 6mm STEEL PLATE BY FOUR M10 X 40mm LONG HEX HEAD BOLTS, NUTS, AND LOCK WASHERS.

ROUNDS AND FILLETS R3

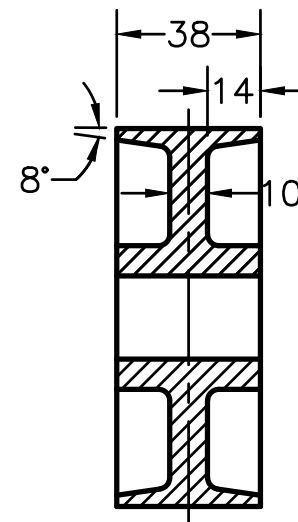


TOP PLATE  
SCALE 1:2

METRIC



WHEEL  
SCALE 1:2



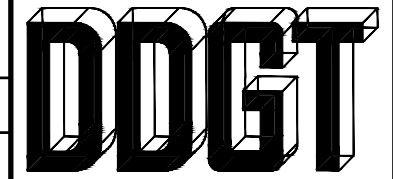
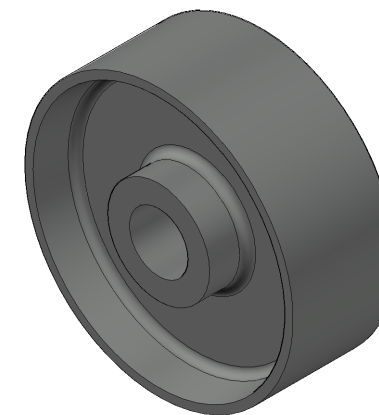
SECTION A-A

## LEGEND

- ∅ DIAMETER
- R RADIUS
- ° DEGREES
- SPOTFACE/COUNTERBORE

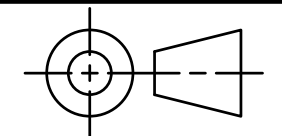
## PARTS LIST

ITEM	QTY.	PART NAME
1	1	TOP PLATE
2	1	WHEEL



DIGITAL DESIGN  
GRAPHICS  
TECHNOLOGY

WWW.DDGT.NET



TOLERANCES UNLESS SPECIFIED:  
MILLIMETERS = ±.5  
X = ±.25  
XX = ±.12

FRACTIONAL ±1/64"  
ANGLES ±1 DEGREE  
SURFACES 32/

CLASS: DDGT120

ASSIGNMENT #: 60

AUTOCAD DRAWING NAME:  
CASTER ASSEMBLY

FIG #: 9-51

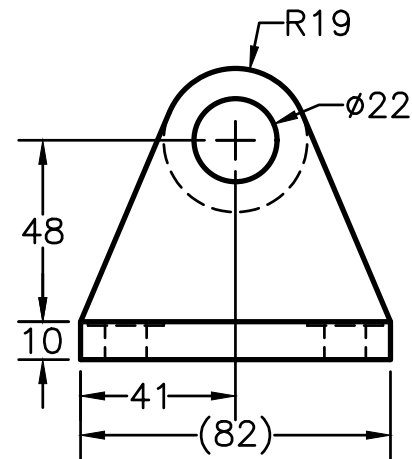
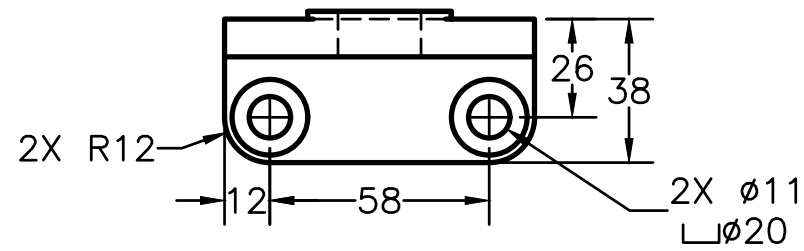
MANAGER: G. STROMMEN

DRAFTER: L. RAMIREZ

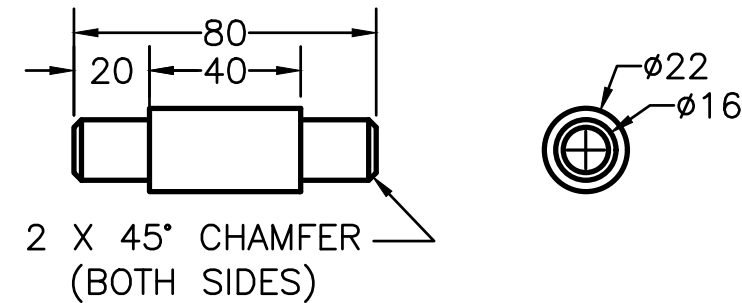
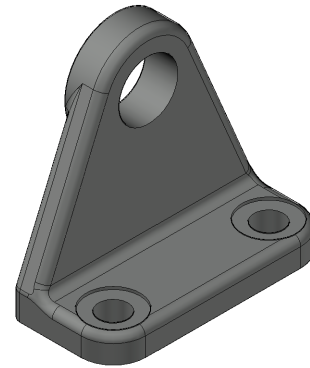
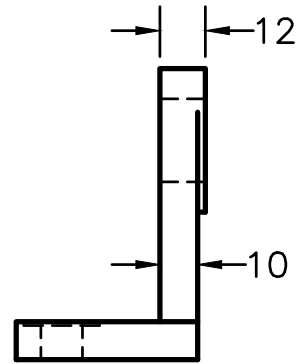
DATE: 11/22/2023

SCALE: AS NOTED

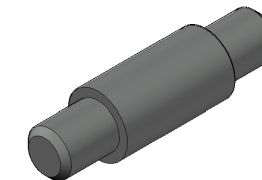
PAGE #: 3 OF 4



AXLE SUPPORT  
SCALE 1:2

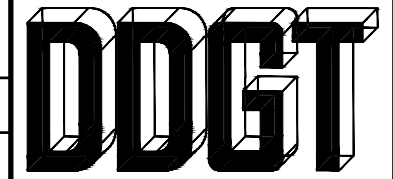


AXLE  
SCALE 1:2



PARTS LIST

ITEM	QTY.	PART NAME
3	2	AXLE SUPPORT
4	1	AXLE
5	2	BUSHING



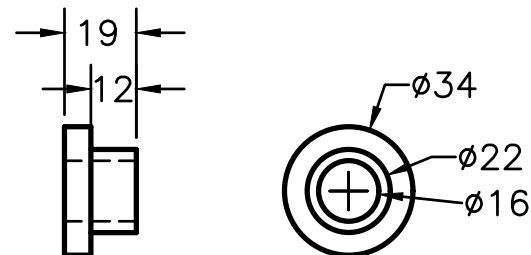
DIGITAL DESIGN  
GRAPHICS  
TECHNOLOGY

WWW.DDGT.NET

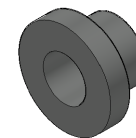
GENERAL NOTES

FASTEN ASSEMBLY TO A 6mm STEEL PLATE BY FOUR M10 X 40mm LONG HEX HEAD BOLTS, NUTS, AND LOCK WASHERS.

ROUNDS AND FILLETS R3



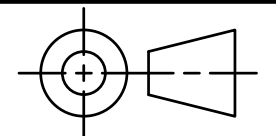
BUSHING  
SCALE 1:2



LEGEND

- ø DIAMETER
- R RADIUS
- ° DEGREES
- ⌊ SPOTFACE/COUNTERBORE

METRIC



TOLERANCES UNLESS SPECIFIED:  
MILLIMETERS = ±.5  
X = ±.25  
XX = ±.12

FRACTIONAL ±1/64"  
ANGLES ±1 DEGREE  
SURFACES 32/

CLASS: DDGT120

ASSIGNMENT #: 60

AUTOCAD DRAWING NAME:  
CASTER ASSEMBLY

FIG #: 9-51

MANAGER: G. STROMMEN

DRAFTER: L. RAMIREZ

DATE: 11/22/2023

SCALE: AS NOTED

PAGE #: 4 OF 4