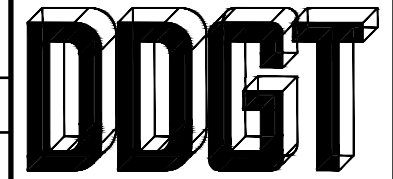


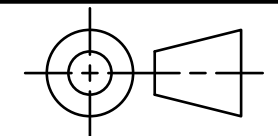
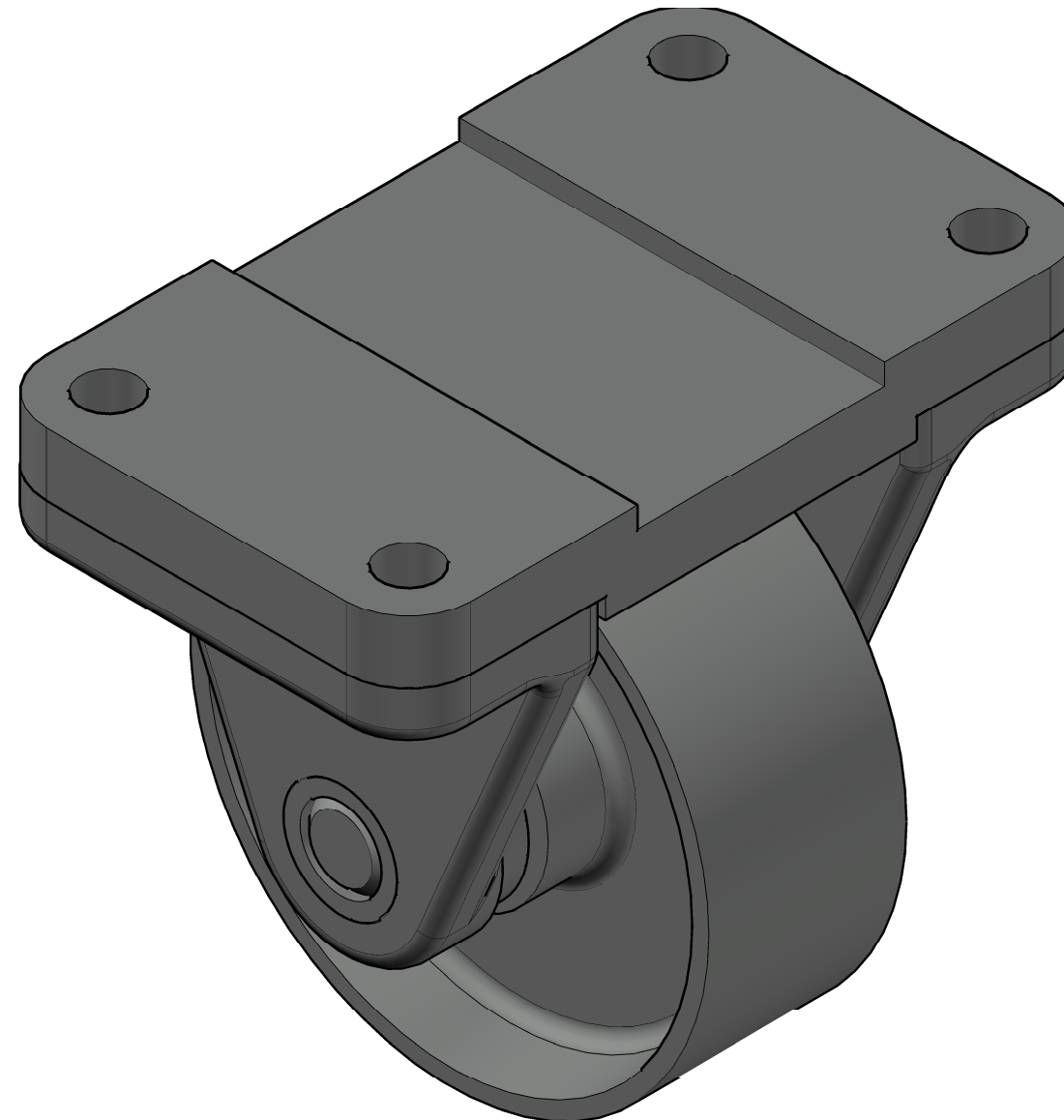
PARTS LIST

ITEM	QTY.	PART NAME	MATERIAL
1	1	TOP PLATE	MALLEABLE IRON
2	1	WHEEL	MALLEABLE IRON
3	2	AXLE SUPPORT	MALLEABLE IRON
4	1	AXLE	SAE 1020
5	2	BUSHING	BRONZE



DIGITAL DESIGN
GRAPHICS
TECHNOLOGY

WWW.DDGT.NET



TOLERANCES UNLESS SPECIFIED:
DECIMAL INCHES:
X = ±.020
XX = ±.012
XXX = ±.005
FRACTIONAL ±1/64"
ANGLES ±1 DEGREE
SURFACES 32/

CLASS: DDGT 120

ASSIGNMENT #: 60

AUTOCAD DRAWING NAME:
CASTER ASSEMBLY

FIG #: 9-51

MANAGER G. STROMMEN

DRAFTER: M. KENNING

DATE: 2024-05-23

SCALE: AS NOTED

PAGE #: 1 OF 4

METRIC

GENERAL NOTES

FASTEN ASSEMBLY TO A 6mm STEEL PLATE BY FOUR M10 X 40mm LG HX HD BOLTS, NUTS AND LOCK WASHERS.

ROUNDS AND FILLETS R3

CASTER ASSEMBLY
SCALE 1:1

LEGEND

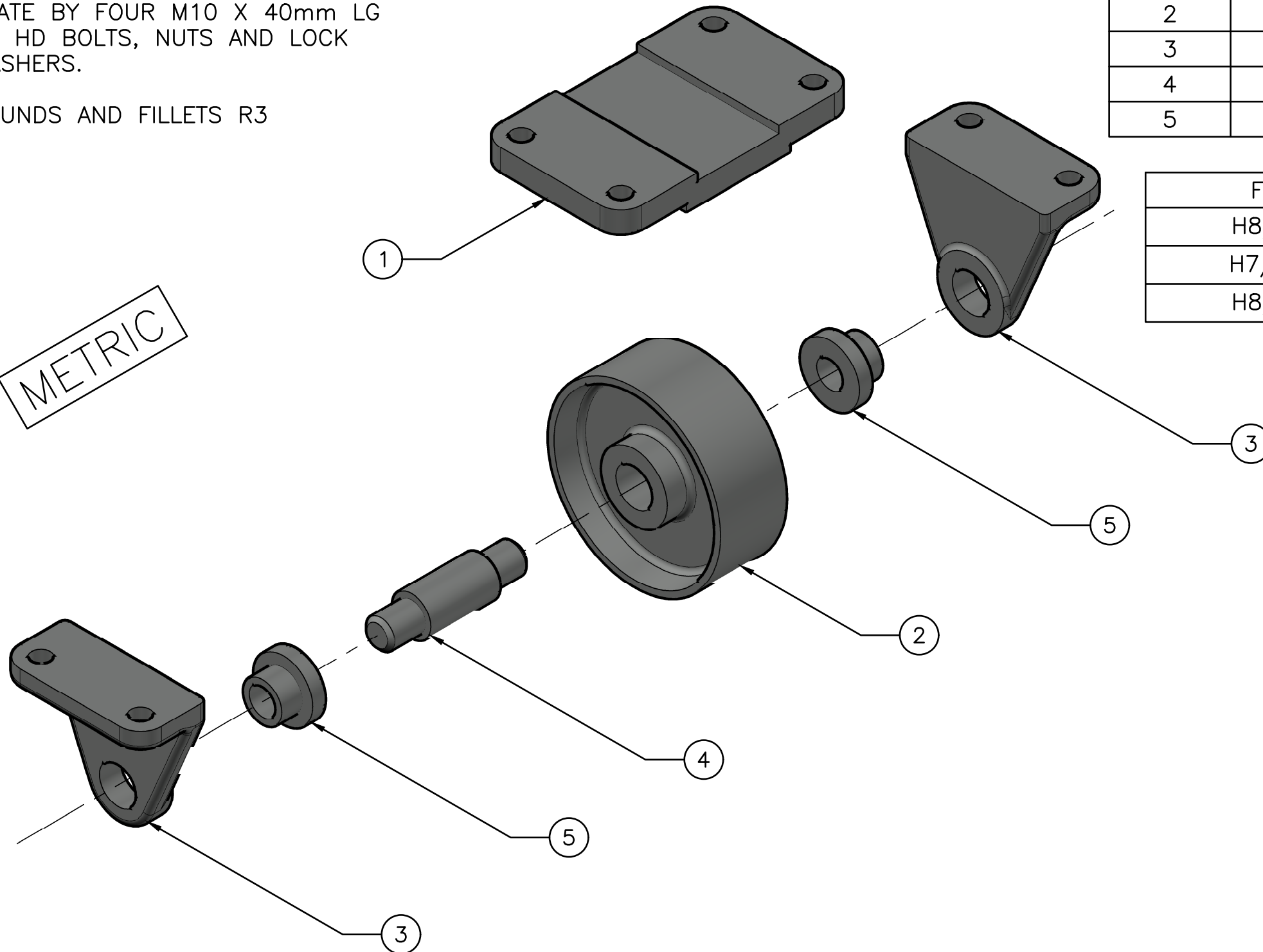
∅ DIAMETER
R RADIUS
° DEGREES
□ SPOTFACE/COUNTERBORE

GENERAL NOTES

FASTEN ASSEMBLY TO A 6mm STEEL PLATE BY FOUR M10 X 40mm LG HX HD BOLTS, NUTS AND LOCK WASHERS.

ROUNDS AND FILLETS R3

METRIC



CASTER EXPLODED ASSEMBLY
SCALE 1:2

PARTS LIST

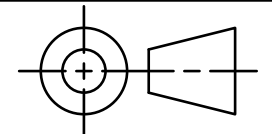
ITEM	QTY.	PART NAME
1	1	TOP PLATE
2	1	WHEEL
3	2	AXLE SUPPORT
4	1	AXLE
5	2	BUSHING

FIT	BETWEEN PARTS
H8/f7	4 AND 5
H7/p6	3 AND 5
H8/f7	2 AND 4



DIGITAL DESIGN
GRAPHICS
TECHNOLOGY

WWW.DDGT.NET



TOLERANCES UNLESS SPECIFIED:
DECIMAL INCHES:
X = ±.020
XX = ±.012
XXX = ±.005
FRACTIONAL ±1/64"
ANGLES ±1 DEGREE
SURFACES 32/

CLASS: DDGT 120

ASSIGNMENT #: 60

AUTOCAD DRAWING NAME:
CASTER ASSEMBLY

FIG #: 9-51

MANAGER G. STROMMEN

DRAFTER: M. KENNING

DATE: 2024-05-23

SCALE: AS NOTED

PAGE #: 2 OF 4

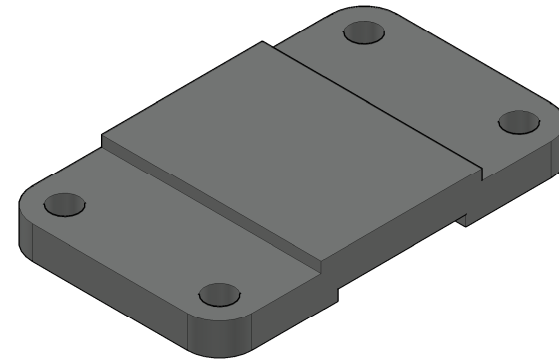
LEGEND

- ∅ DIAMETER
- R RADIUS
- ° DEGREES
- SPOTFACE/COUNTERBORE

GENERAL NOTES

FASTEN ASSEMBLY TO A 6mm STEEL PLATE BY FOUR M10 X 40mm LG HX HD BOLTS, NUTS AND LOCK WASHERS.

ROUNDS AND FILLETS R3

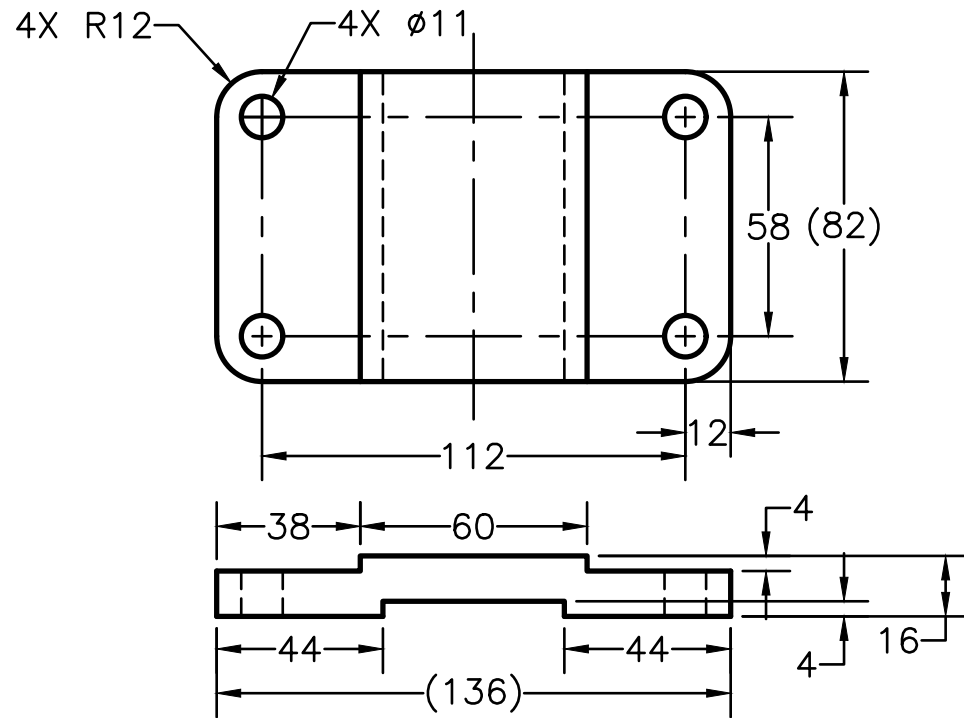


PARTS LIST		
ITEM	QTY.	PART NAME
1	1	TOP PLATE
2	1	WHEEL

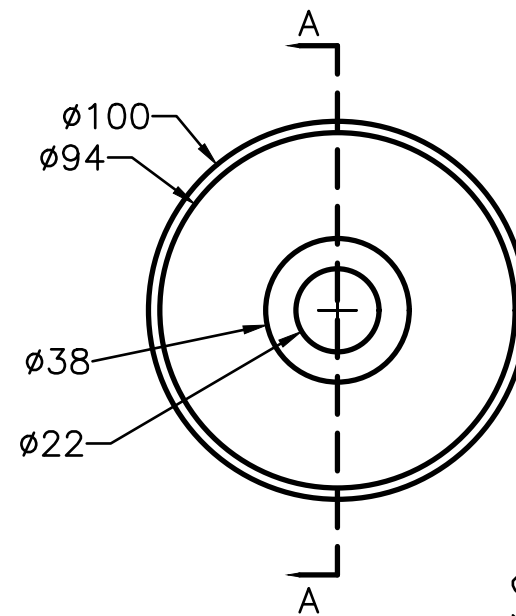


DIGITAL DESIGN
GRAPHICS
TECHNOLOGY

WWW.DDGT.NET

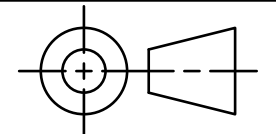
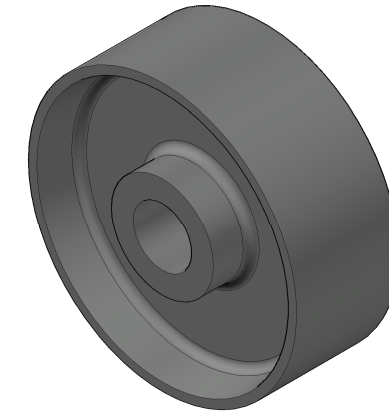


TOP PLATE
SCALE 1:2



WHEEL
SCALE 1:2

SECTION A-A



TOLERANCES UNLESS SPECIFIED:
DECIMAL INCHES:
X = ±.020
XX = ±.012
XXX = ±.005
FRACTIONAL ±1/64"
ANGLES ±1 DEGREE
SURFACES 32/

METRIC

LEGEND

- Ø DIAMETER
- R RADIUS
- ° DEGREES
- SPOTFACE/COUNTERBORE

CLASS: DDGT 120

ASSIGNMENT #: 60

AUTOCAD DRAWING NAME:
CASTER ASSEMBLY

FIG #: 9-51

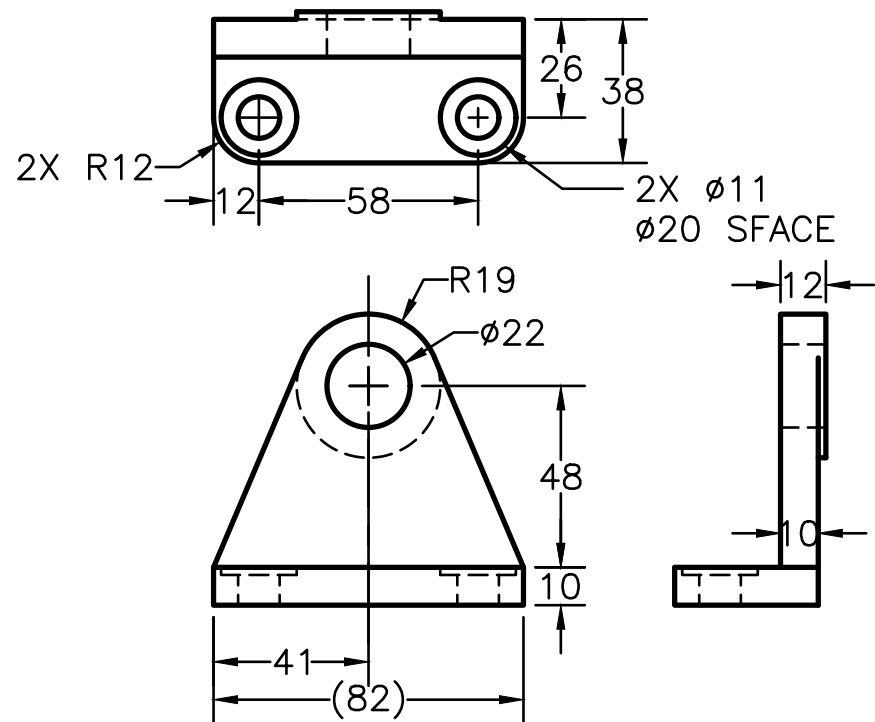
MANAGER G. STROMMEN

DRAFTER: M. KENNING

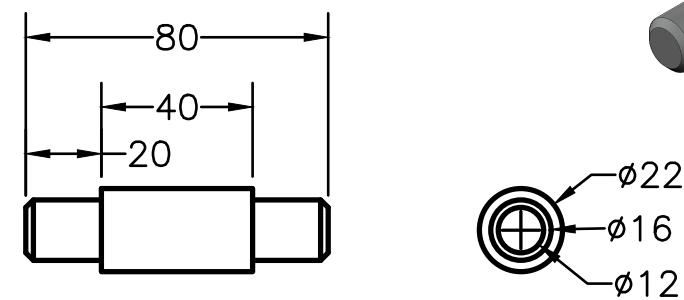
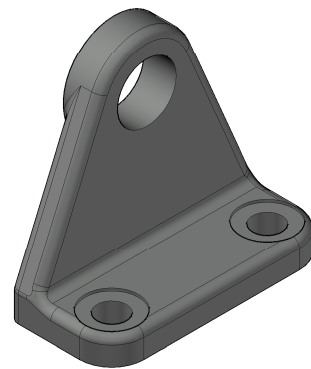
DATE: 2024-05-23

SCALE: AS NOTED

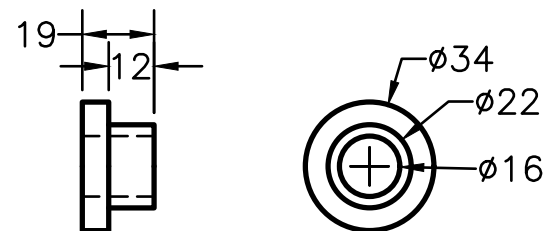
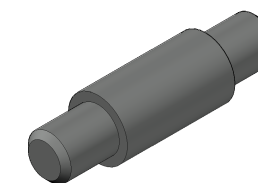
PAGE #: 3 OF 4



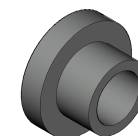
AXLE SUPPORT
SCALE 1:2



AXLE 2 X 45° CHAMFER
SCALE 1:2

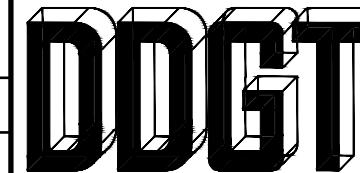


BUSHING
SCALE 1:2



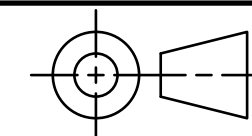
PARTS LIST

ITEM	QTY.	PART NAME
3	2	AXLE SUPPORT
4	1	AXLE
5	2	BUSHING



DIGITAL DESIGN
GRAPHICS
TECHNOLOGY

WWW.DDGT.NET



TOLERANCES UNLESS SPECIFIED:
DECIMAL INCHES:
X = ±.020
XX = ±.012
XXX = ±.005
FRACTIONAL ±1/64"
ANGLES ±1 DEGREE
SURFACES 32/

CLASS: DDGT 120

ASSIGNMENT #: 60

AUTOCAD DRAWING NAME:
CASTER ASSEMBLY

FIG #: 9-51

MANAGER G. STROMMEN

DRAFTER: M. KENNING

DATE: 2024-05-23

SCALE: AS NOTED

PAGE #: 4 OF 4

GENERAL NOTES

FASTEN ASSEMBLY TO A 6mm STEEL PLATE BY FOUR M10 X 40mm LG HX HD BOLTS, NUTS AND LOCK WASHERS.

ROUNDS AND FILLETS R3

LEGEND

- ∅ DIAMETER
- R RADIUS
- ° DEGREES
- SPOTFACE/COUNTERBORE

METRIC