

TROLLEY ASSEMBLY
SCALE 1 / 2

PARTS LIST

ITEM	QTY	PART NUMBER	MATERIAL	DESCRIPTION
1	2	SIDE PLATE SUB-ASSEMBLY		
1.1	1	SIDE PLATE	MILD STEEL	
1.2	1	GUIDE	CAST IRON	
1.3	2	RIVET	STANDARD	BUTTON HEAD, Ø10 X 60 LONG
2	1	AXLE	COLD ROLLED STEEL	
3	1	HOOK	MILD STEEL	10 THICK
4	44	ROLLER BEARING	COLD ROLLED STEEL	Ø10 X 38 LONG
5	4	WHEEL	CAST IRON	
6	4	WHEEL AXLE	COLD ROLLED STEEL	
7	12	ADJUSTING WASHER	STANDARD	Ø26ID X Ø44OD X 4 THICK
8	4	WASHER	STANDARD	Ø26ID X Ø65OD X 3 THICK
9	4	LOCKNUT	STANDARD	M16 X 2 (PREVAILING TORQUE INSERT - TYPE)
10	6	COTTER PIN	STANDARD	Ø6 X 40 LONG

GENERAL NOTES:

TROLLEY TO BE MOUNTED ON AN S200 X 34 BEAM
CHAMFERS ARE 2 X 2 UNLESS OTHERWISE NOTED

METRIC

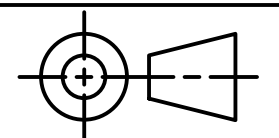
LEGEND:

- Ø DIAMETER
- R RADIUS
- ° DEGREES



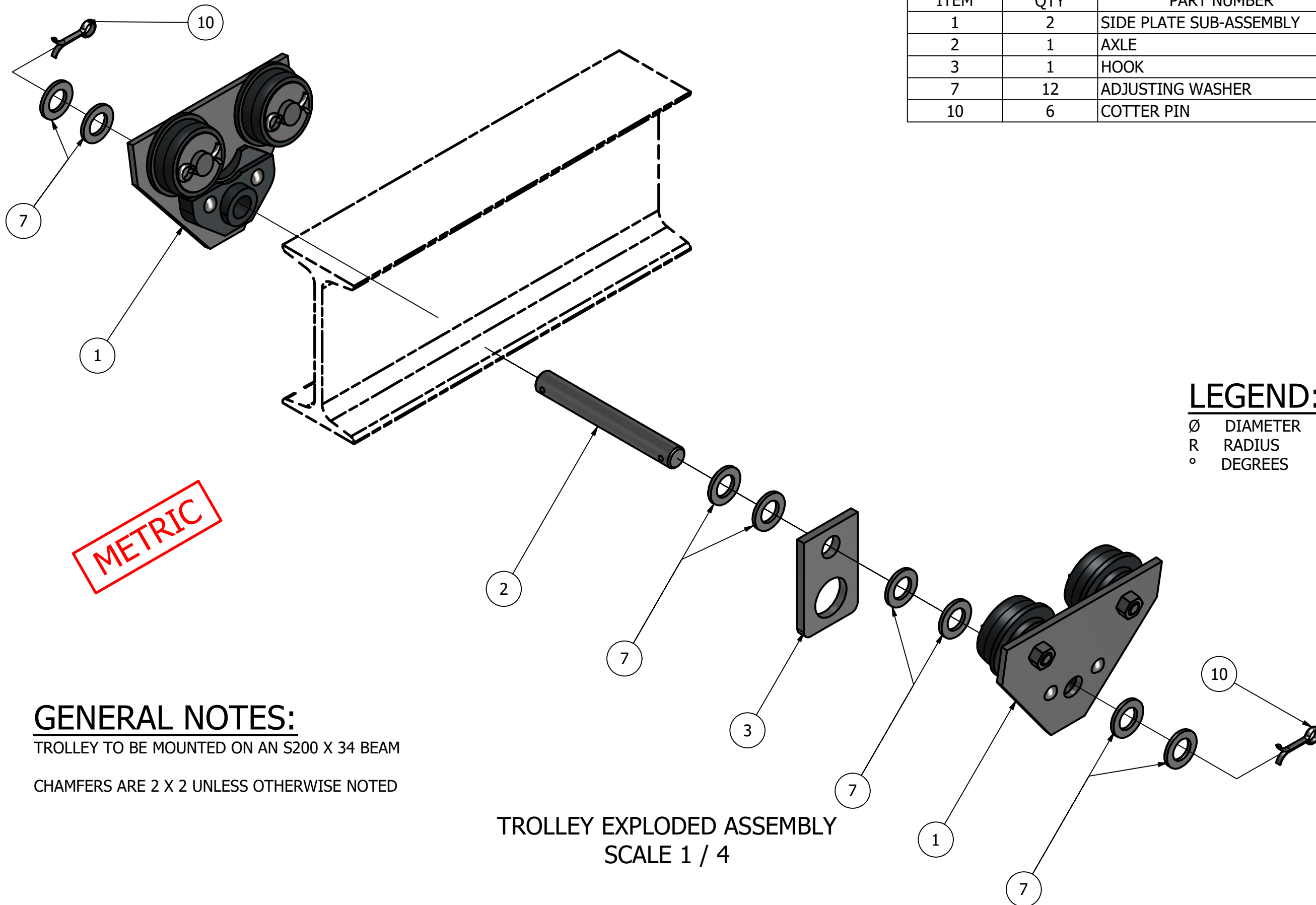
DIGITAL DESIGN
GRAPHICS
TECHNOLOGY

WWW.DDGT.NET



TOLERANCES UNLESS SPECIFIED:
MILLIMETERS:
WHOLE NUMBERS = ±.5
X = ±.25
XX = ±.12
FRACTIONAL ±1/64"
ANGLES ±1 DEGREE
SURFACES 32 ✓

CLASS:	DDGT120
ASSIGNMENT #:	70
INVENTOR DRAWING NAME:	TROLLEY
FIG #:	14-83
MANAGER:	G.STROMMEN
DRAFTER:	M.Kenning
DATE:	12/15/2023
SCALE:	AS NOTED
PAGE #:	1 OF 5



PARTS LIST		
ITEM	QTY	PART NUMBER
1	2	SIDE PLATE SUB-ASSEMBLY
2	1	AXLE
3	1	HOOK
7	12	ADJUSTING WASHER
10	6	COTTER PIN

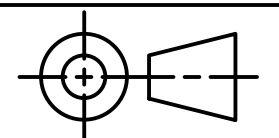


DIGITAL DESIGN
GRAPHICS
TECHNOLOGY

WWW.DDGT.NET

LEGEND:

- ∅ DIAMETER
- R RADIUS
- ° DEGREES



TOLERANCES UNLESS SPECIFIED:
MILLIMETERS:
WHOLE NUMBERS = ±.5
X = ±.25
XX = ±.12
FRACTIONAL ±1/64"
ANGLES ±1 DEGREE
SURFACES ³²✓

CLASS: DDGT120

ASSIGNMENT #: 70

INVENTOR DRAWING NAME:
TROLLEY

FIG #: 14-83

MANAGER: G.STROMMEN

DRAFTER: M.Kenning

DATE: 12/15/2023

SCALE: AS NOTED

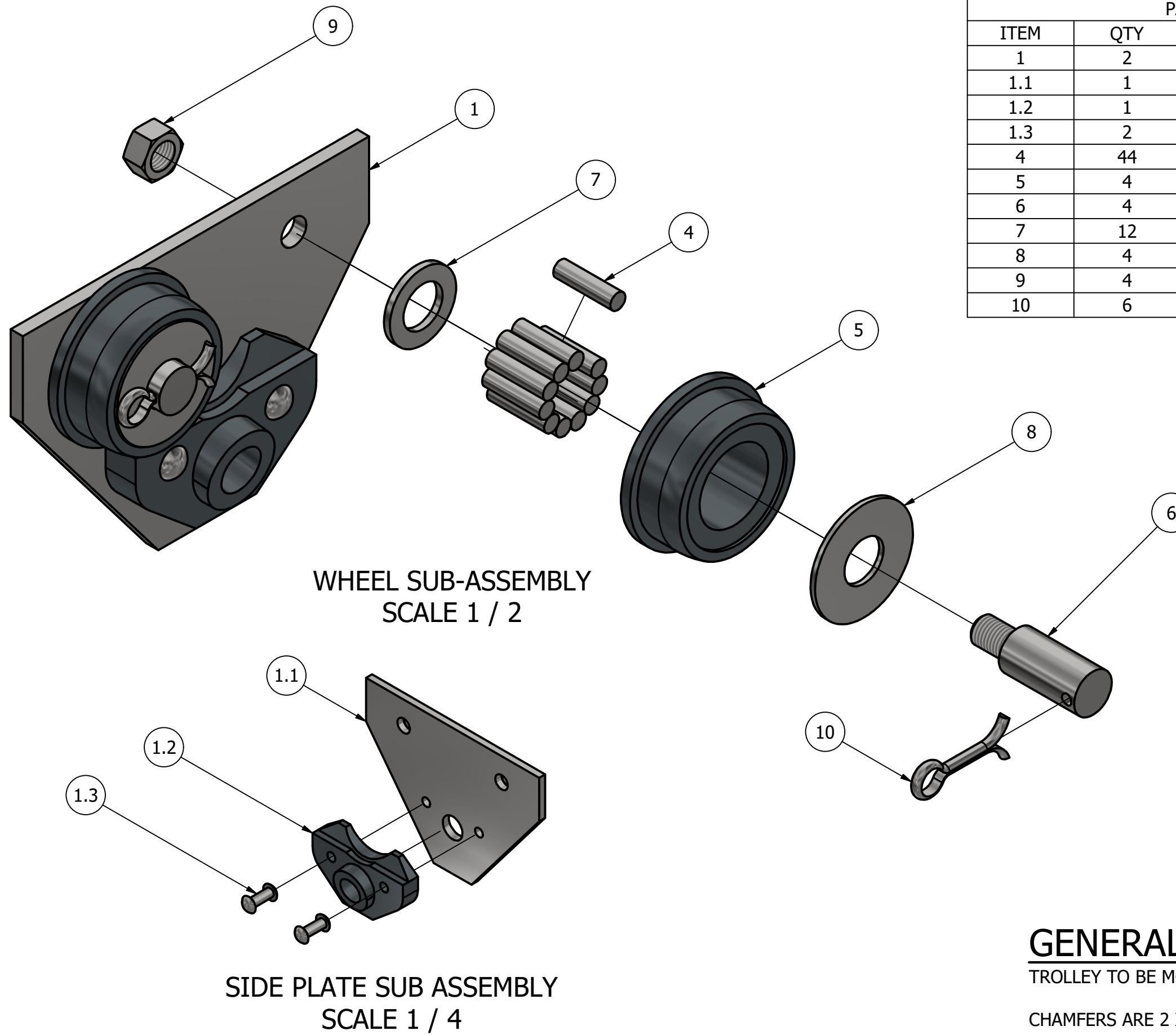
PAGE #: 2 OF 5

GENERAL NOTES:

TROLLEY TO BE MOUNTED ON AN S200 X 34 BEAM

CHAMFERS ARE 2 X 2 UNLESS OTHERWISE NOTED

TROLLEY EXPLODED ASSEMBLY
SCALE 1 / 4



WHEEL SUB-ASSEMBLY
SCALE 1 / 2

SIDE PLATE SUB ASSEMBLY
SCALE 1 / 4

PARTS LIST		
ITEM	QTY	PART NUMBER
1	2	SIDE PLATE SUB-ASSEMBLY
1.1	1	SIDE PLATE
1.2	1	GUIDE
1.3	2	RIVET
4	44	ROLLER BEARING
5	4	WHEEL
6	4	WHEEL AXLE
7	12	ADJUSTING WASHER
8	4	WASHER
9	4	LOCKNUT
10	6	COTTER PIN

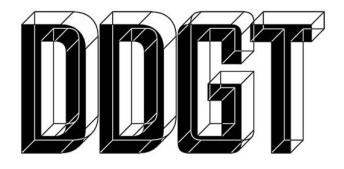
LEGEND:

- ∅ DIAMETER
- R RADIUS
- ° DEGREES

METRIC

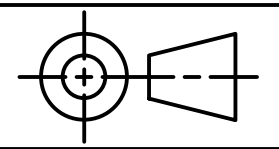
GENERAL NOTES:

TROLLEY TO BE MOUNTED ON AN S200 X 34 BEAM
CHAMFERS ARE 2 X 2 UNLESS OTHERWISE NOTED



DIGITAL DESIGN
GRAPHICS
TECHNOLOGY

WWW.DDGT.NET



TOLERANCES UNLESS SPECIFIED:
MILLIMETERS:
WHOLE NUMBERS = ±.5
X = ±.25
XX = ±.12
FRACTIONAL ±1/64"
ANGLES ±1 DEGREE
SURFACES $\sqrt{32}$

CLASS: DDGT120

ASSIGNMENT #: 70

INVENTOR DRAWING NAME:
TROLLEY

FIG #: 14-83

MANAGER: G.STROMMEN

DRAFTER: M.Kenning

DATE: 12/15/2023

SCALE: AS NOTED

PAGE #: 3 OF 5

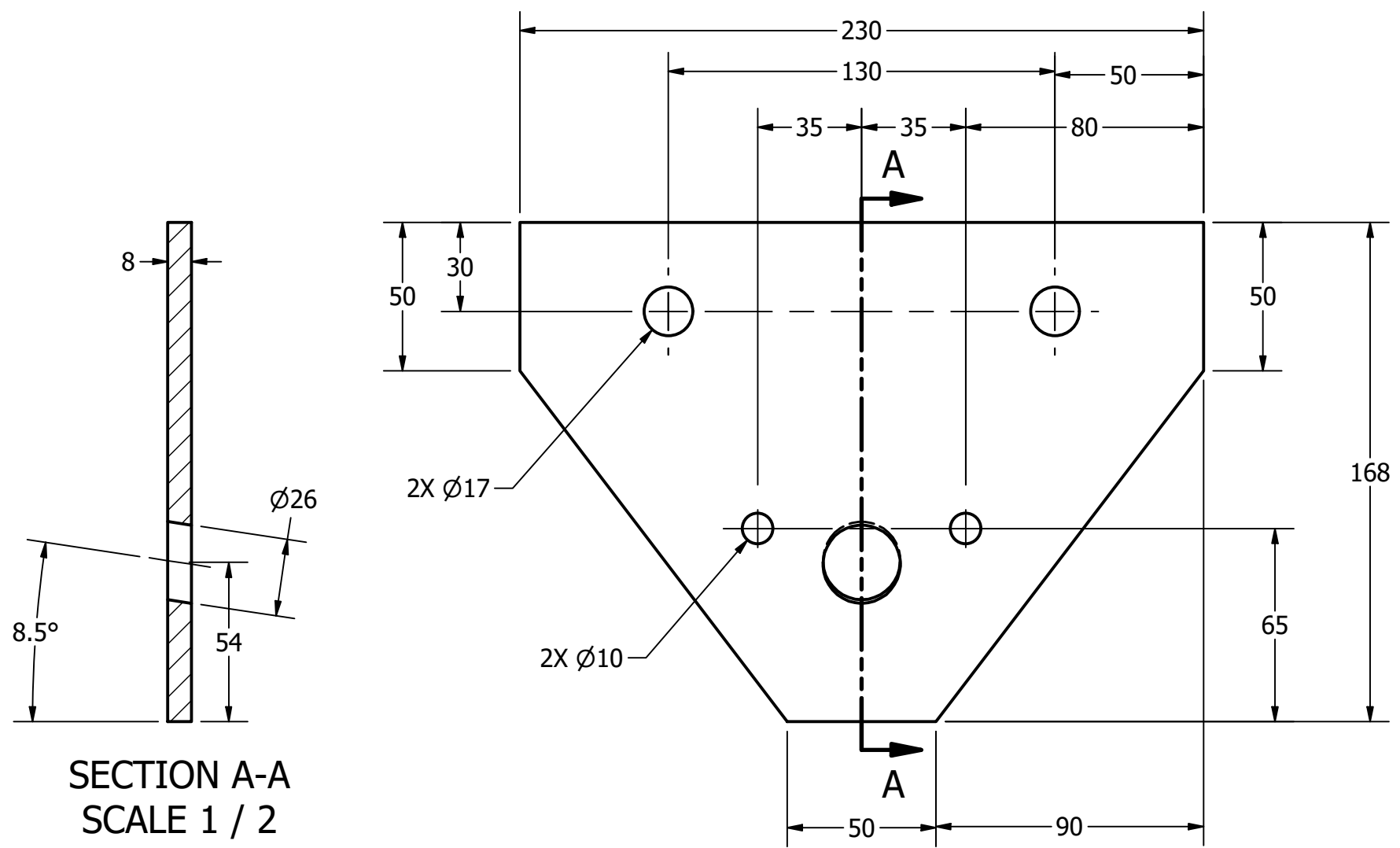
METRIC

PARTS LIST		
ITEM	QTY	PART NUMBER
1.1	2	SIDE PLATE



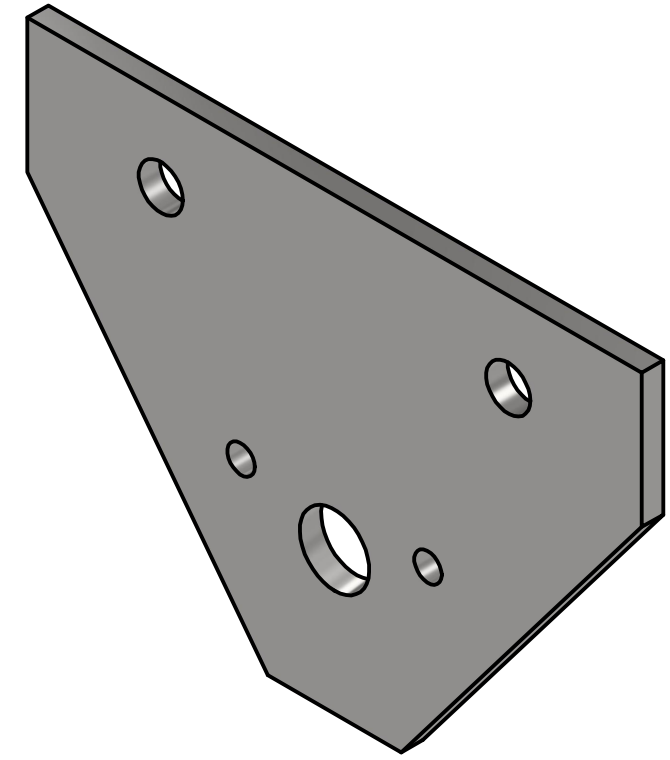
DIGITAL DESIGN
GRAPHICS
TECHNOLOGY

WWW.DDGT.NET



SECTION A-A
SCALE 1 / 2

SIDE PLATE
SCALE 1 / 2

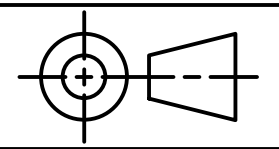


LEGEND:

- ∅ DIAMETER
- R RADIUS
- ° DEGREES

GENERAL NOTES:

TROLLEY TO BE MOUNTED ON AN S200 X 34 BEAM
CHAMFERS ARE 2 X 2 UNLESS OTHERWISE NOTED



TOLERANCES UNLESS SPECIFIED:
MILLIMETERS:
WHOLE NUMBERS = ±.5
X = ±.25
XX = ±.12
FRACTIONAL ±1/64"
ANGLES ±1 DEGREE
SURFACES $\sqrt{\quad}$

CLASS: DDGT120

ASSIGNMENT #: 70

INVENTOR DRAWING NAME:
TROLLEY

FIG #: 14-83

MANAGER: G.STROMMEN

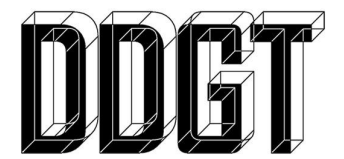
DRAFTER: M.Kenning

DATE: 12/15/2023

SCALE: AS NOTED

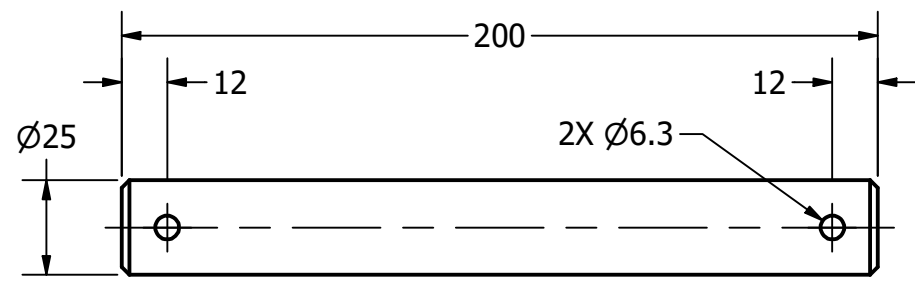
PAGE #: 4 OF 5

PARTS LIST		
ITEM	QTY	PART NUMBER
2	1	AXLE
1.2	2	GUIDE

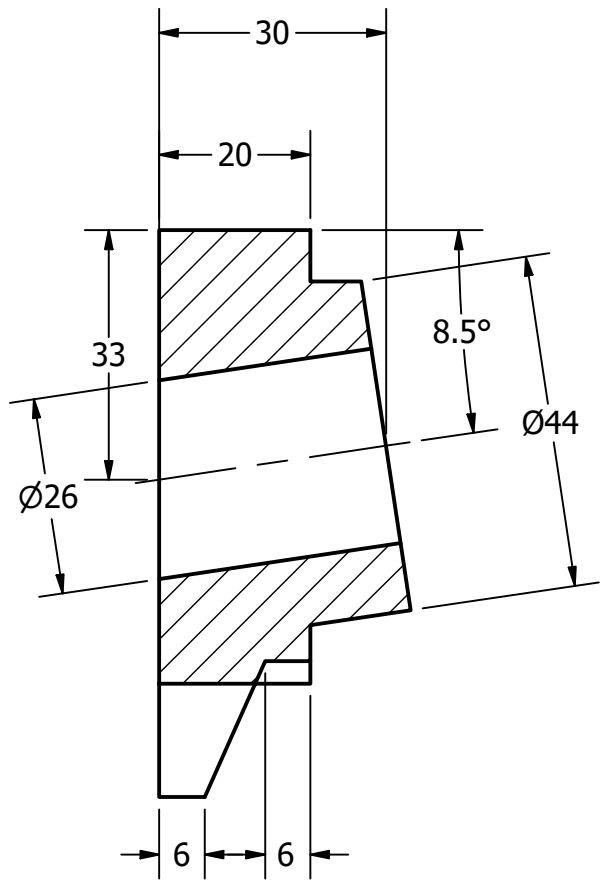
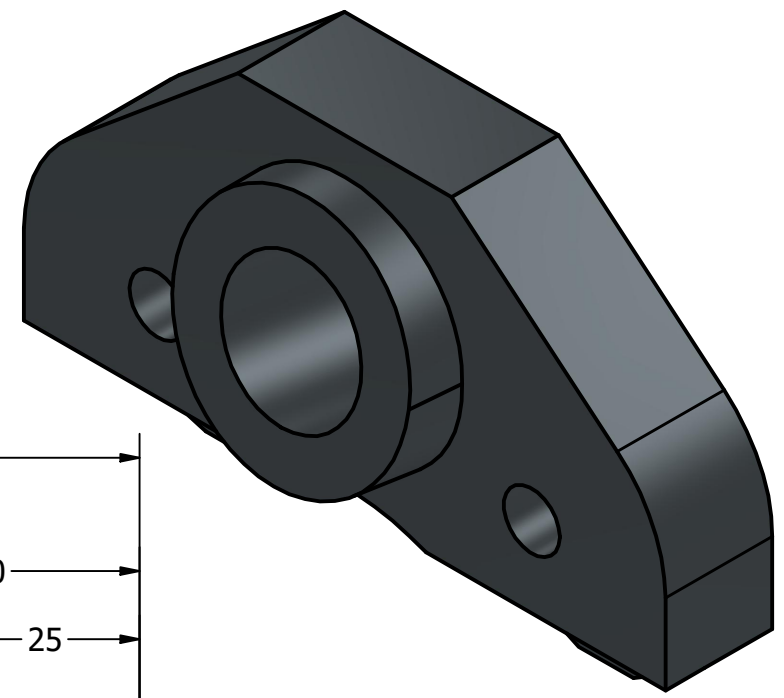
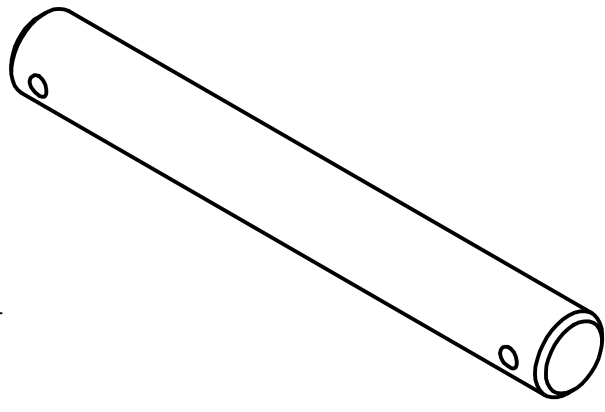


DIGITAL DESIGN
GRAPHICS
TECHNOLOGY

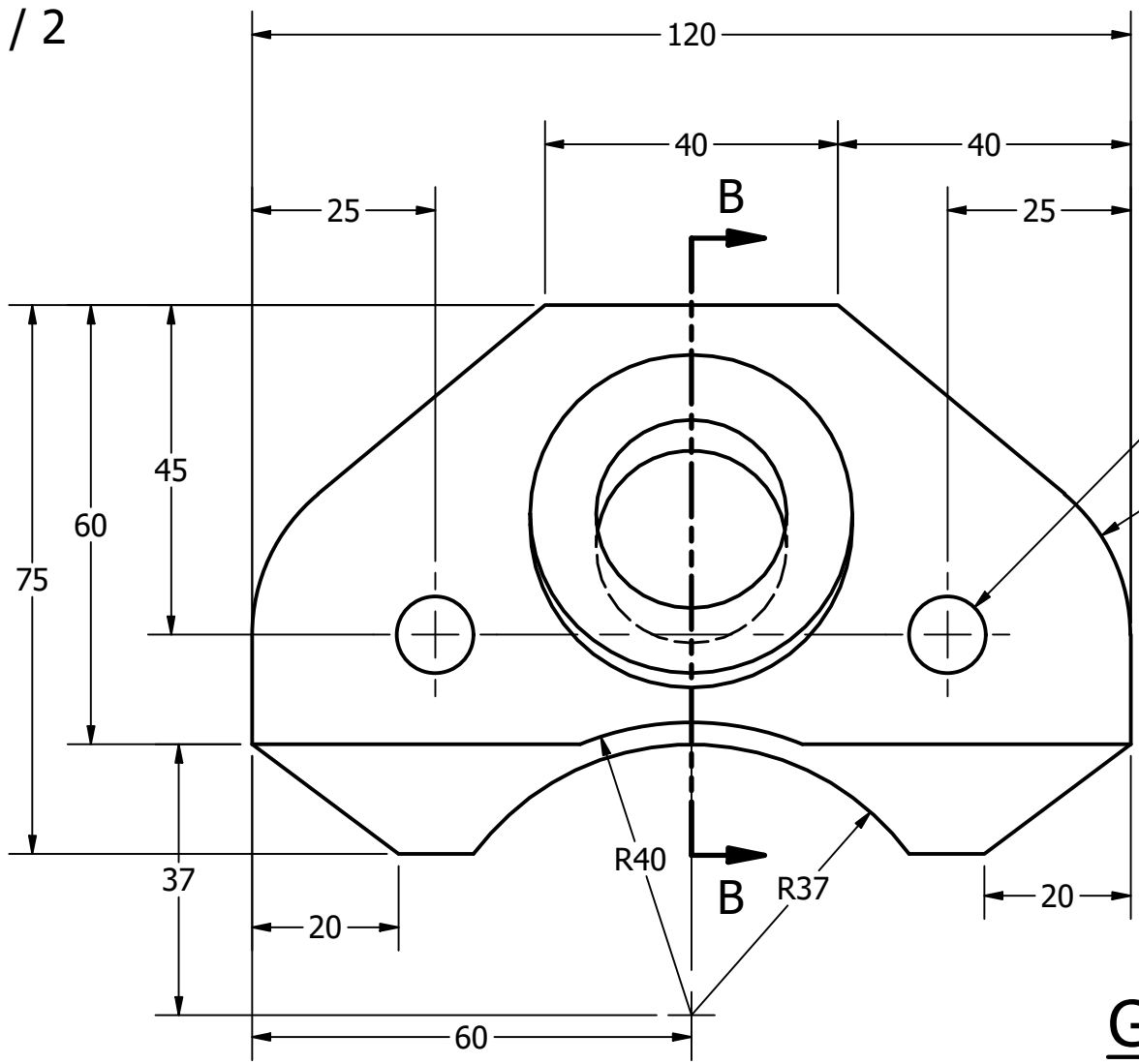
WWW.DDGT.NET



AXLE
SCALE 1 / 2



SECTION B-B
SCALE 1 : 1

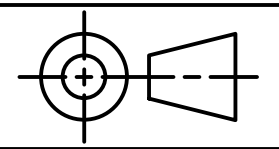


GUIDE
SCALE 1 : 1

METRIC

LEGEND:
 Ø DIAMETER
 R RADIUS
 ° DEGREES

GENERAL NOTES:
 TROLLEY TO BE MOUNTED ON AN S200 X 34 BEAM
 CHAMFERS ARE 2 X 2 UNLESS OTHERWISE NOTED



TOLERANCES UNLESS SPECIFIED:
 MILLIMETERS:
 WHOLE NUMBERS = ±.5
 X = ±.25
 XX = ±.12
 FRACTIONAL ±1/64"
 ANGLES ±1 DEGREE
 SURFACES 32 ✓

CLASS:	DDGT120
ASSIGNMENT #:	70
INVENTOR DRAWING NAME:	TROLLEY
FIG #:	14-83
MANAGER:	G.STROMMEN
DRAFTER:	M.Kenning
DATE:	12/15/2023
SCALE:	AS NOTED
PAGE #:	5 OF 5