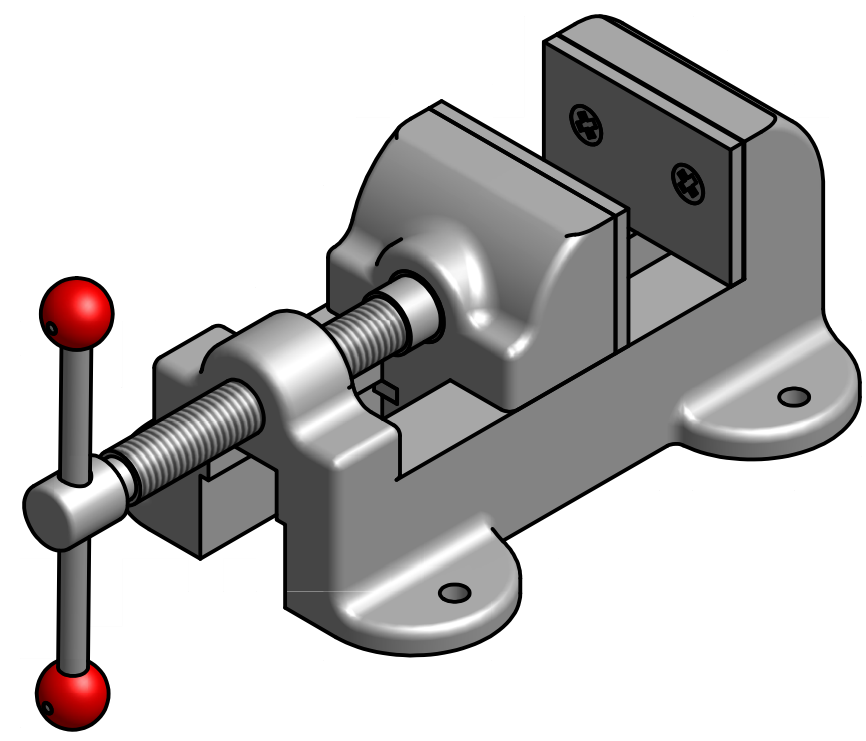


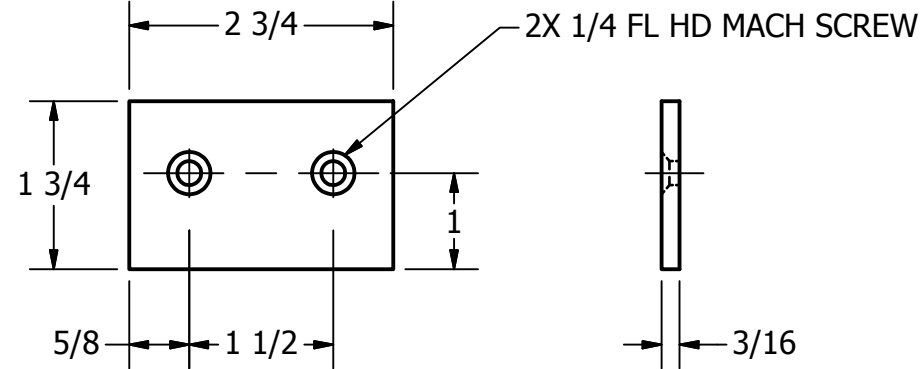
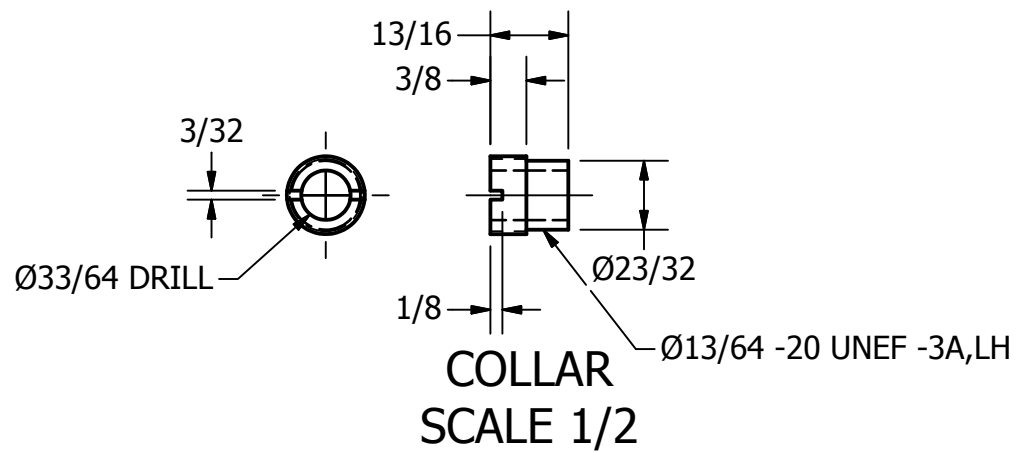
MACHINE VISE ASSEMBLY EXPLODED
SCALE 1 / 2

PARTS LIST			
ITEM	QTY	PART NUMBER	MATERIAL
1	1	BASE	C1
2	1	SLIDING JAW	C1
3	2	JAW PLATE	SAE #3140
4	1	WISE SCREW	SAE #3140
5	1	COLLAR	SAE #1020
6	1	SPECIAL KEY	SAE #1020
7	1	HANDLE ROD	CRS
8	2	HANDLE BALL	SAE # 1020
9	2	SLIDE KEY	SAE # 1020
10	2	SET SCREW	SAE #1016
11	4	MACHINE SCREW	TYP
12	2	#000 TAPER PIN	TYP

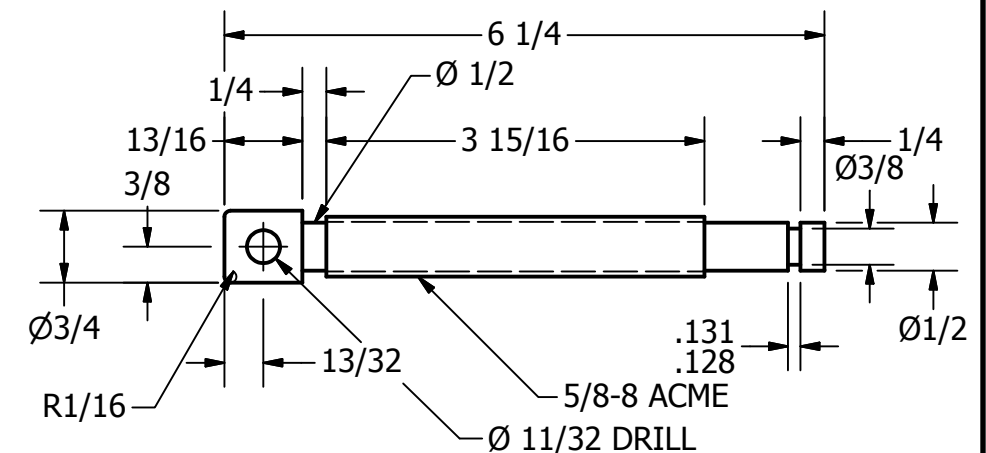
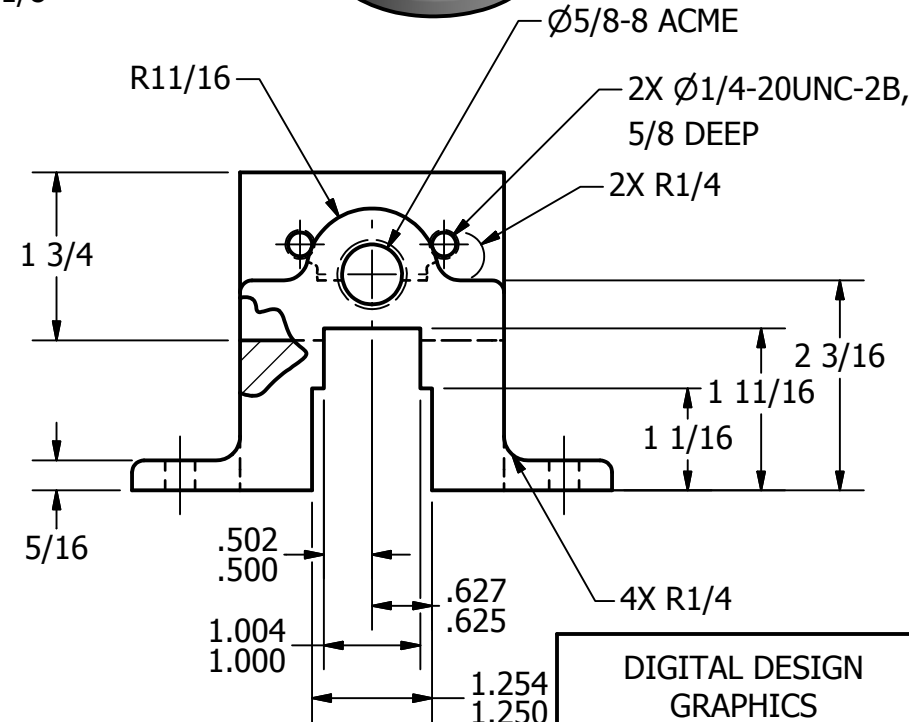
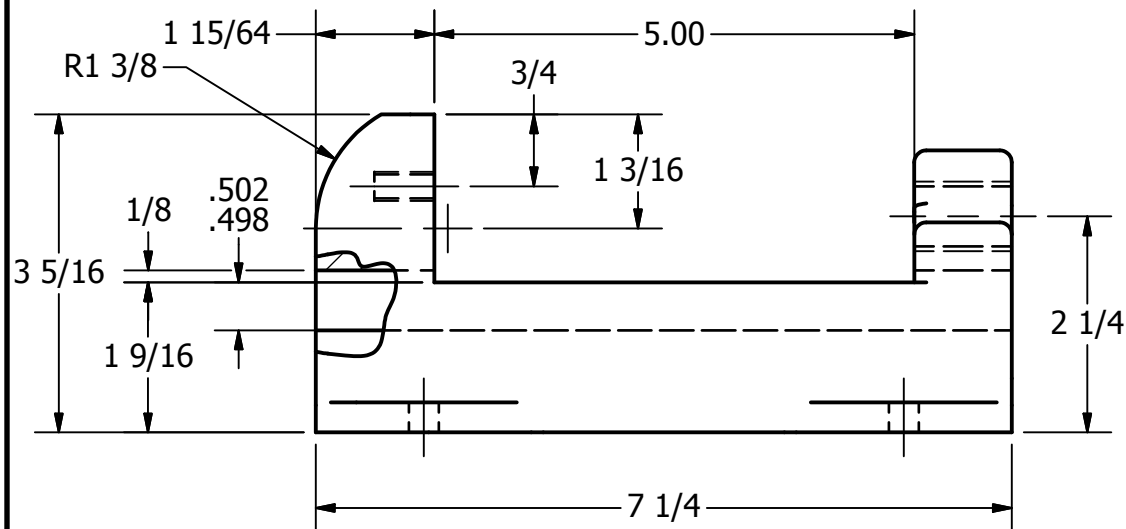
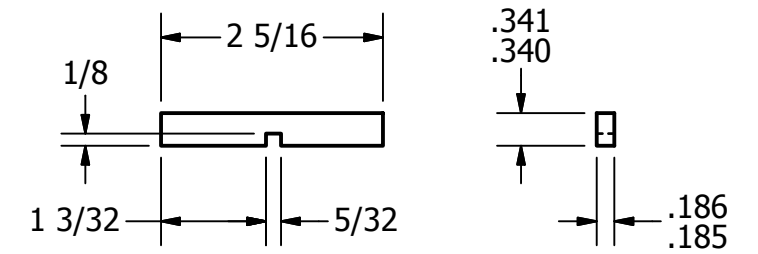
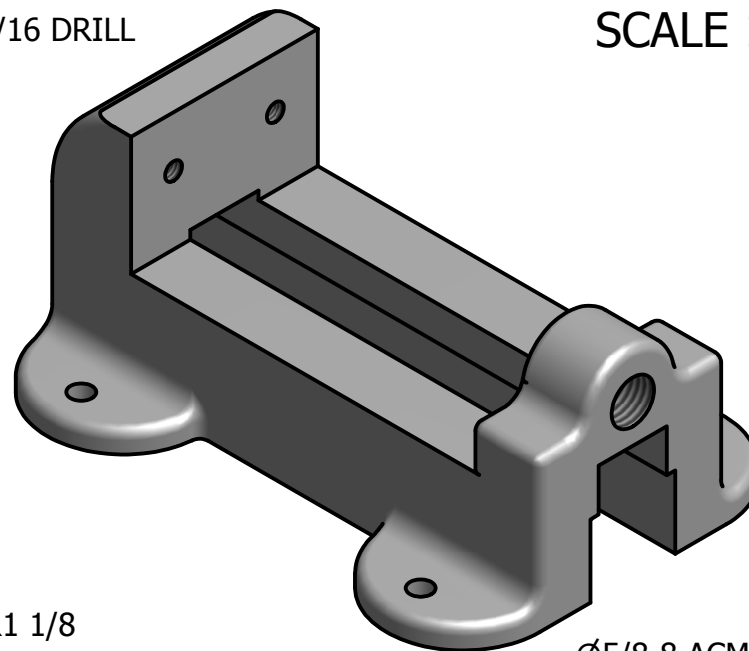
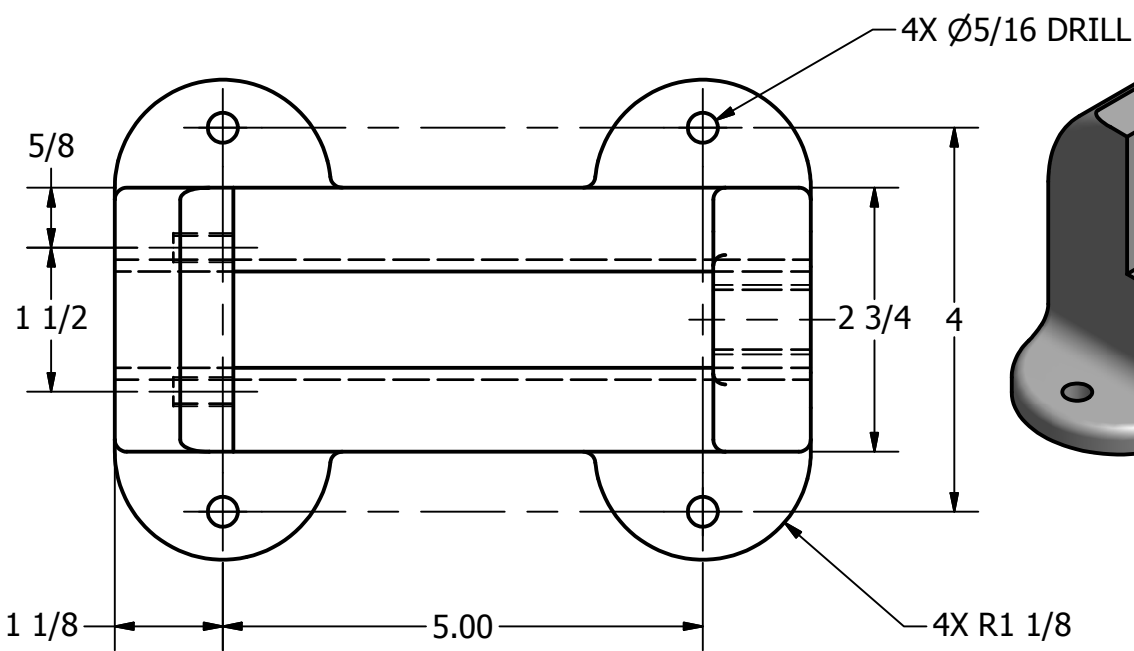


MACHINE VISE ASSEMBLY
SCALE 1 / 2

DIGITAL DESIGN GRAPHICS TECHNOLOGY	NAME	MARTIN QUEVEDO	DWG NAME:	14-71	SHEET#: 1 OF 3
	COURSE:	DDGT 121		MACHINE VISE	
	DATE:	2/1/2012	SCALE:	AS NOTED	

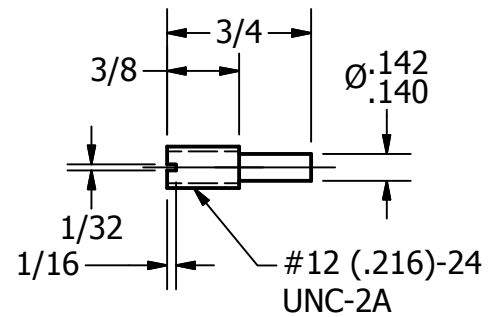


PARTS LIST		
ITEM	QTY	PART NUMBER
1	1	BASE
3	2	JAW PLATE
4	1	WISE SCREW
5	1	COLLAR
9	2	SLIDE KEY

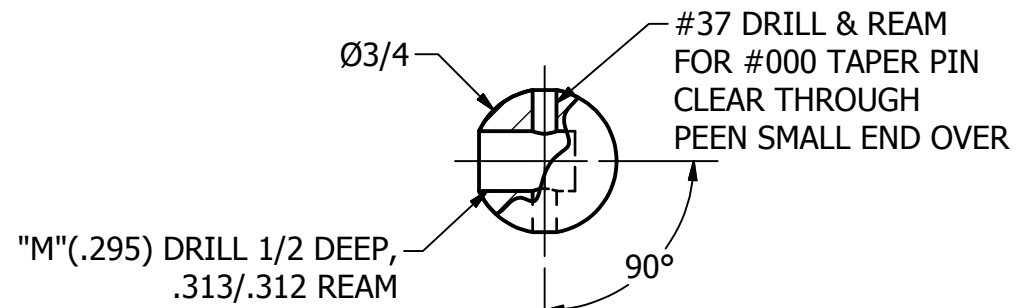


LEGEND:
R= RADIUS
Ø=DIAMETER
°=DEGREES

DIGITAL DESIGN GRAPHICS TECHNOLOGY	NAME	MARTIN QUEVEDO	DWG NAME:	14-71	SHEET#: 2 OF 3
	COURSE:	DDGT 121		MACHINE VISE	
	DATE:	2/1/2012	SCALE:	AS NOTED	

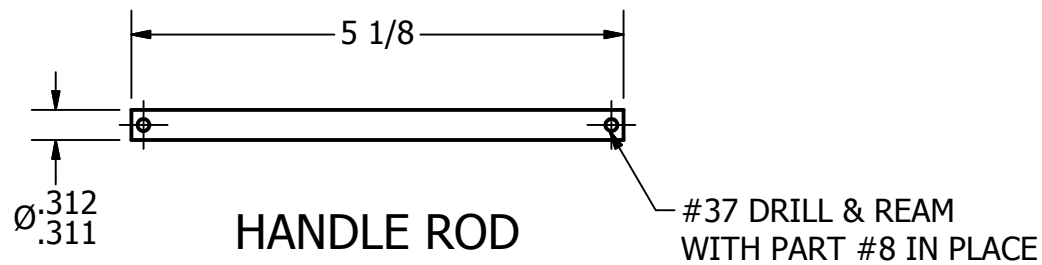


SET SCREW
SCALE 1:1

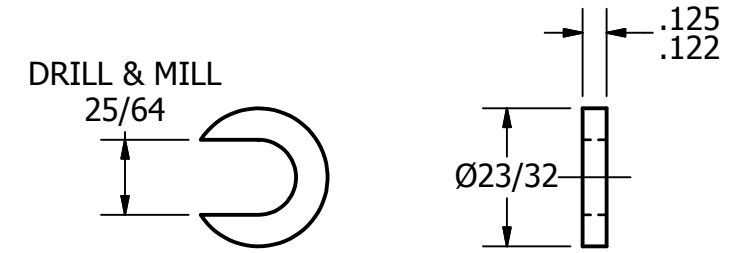


HANDLE BALL
SCALE 1:1

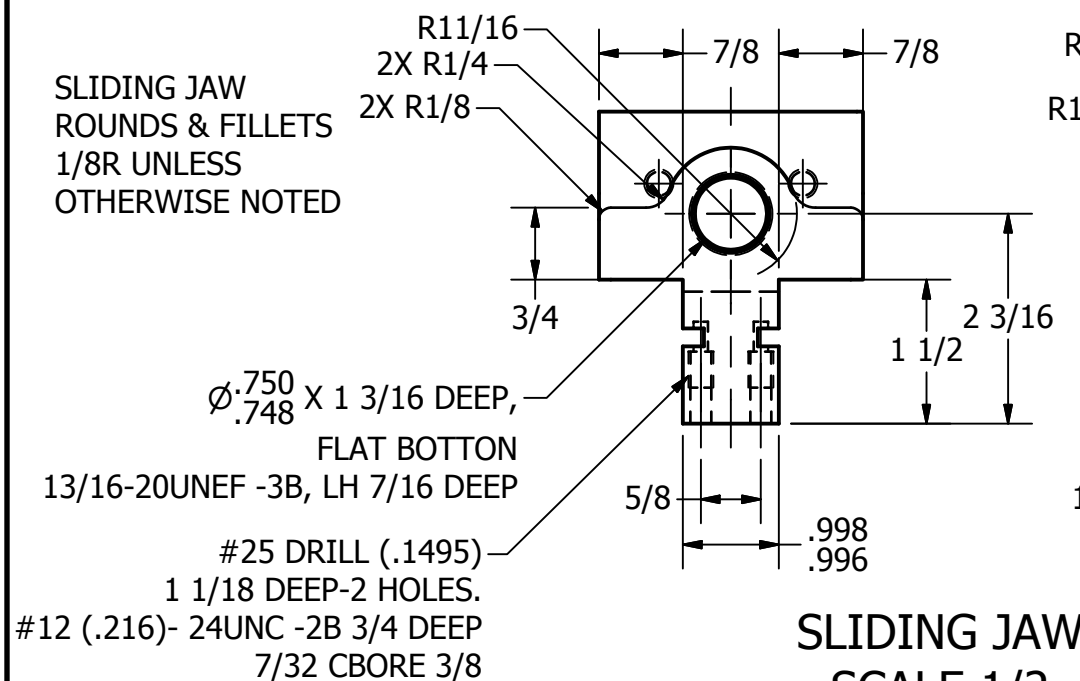
PARTS LIST		
ITEM	QTY	PART NUMBER
2	1	SLIDING JAW
6	1	SPECIAL KEY
7	1	HANDLE ROD
8	2	HANDLE BALL
10	2	SET SCREW



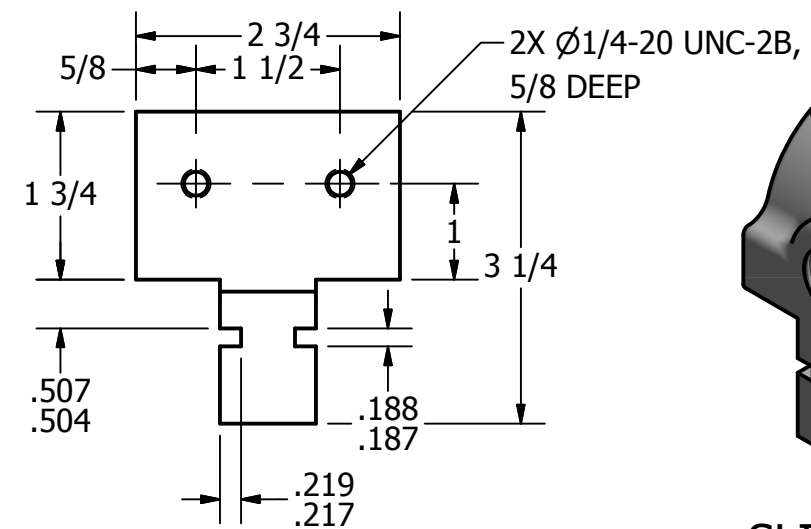
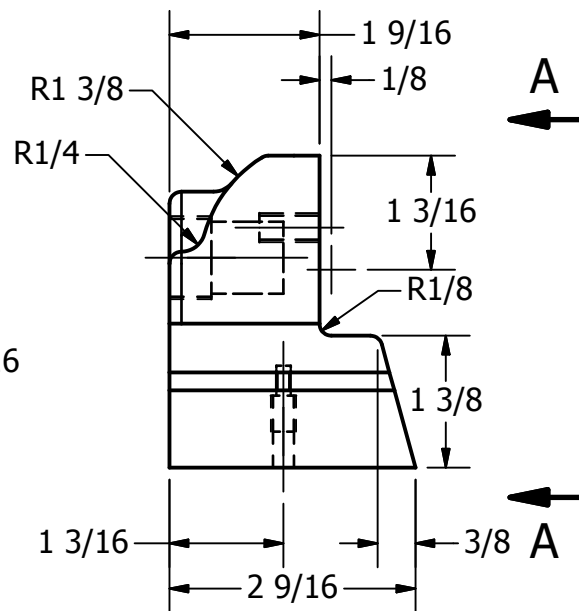
HANDLE ROD
SCALE 1 : 2



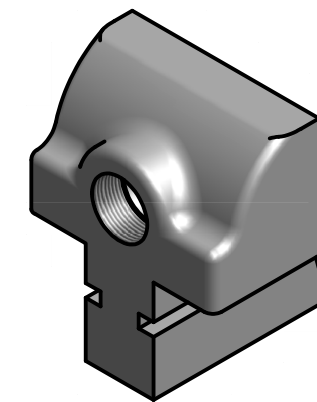
SPECIAL KEY
SCALE 1 : 1



SLIDING JAW
SCALE 1/2



VIEW A-A
SCALE 1/2



SLIDING JAW
SCALE 1/2

DIGITAL DESIGN GRAPHICS TECHNOLOGY	NAME	MARTIN QUEVEDO	DWG NAME:	14-71	SHEET#: 3 OF 3
	COURSE:	DDGT 121		MACHINE VISE	
	DATE:	2/1/2012	SCALE:	AS NOTED	