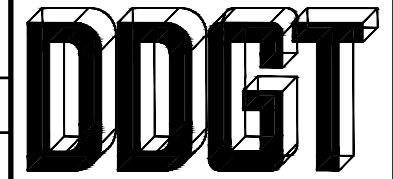


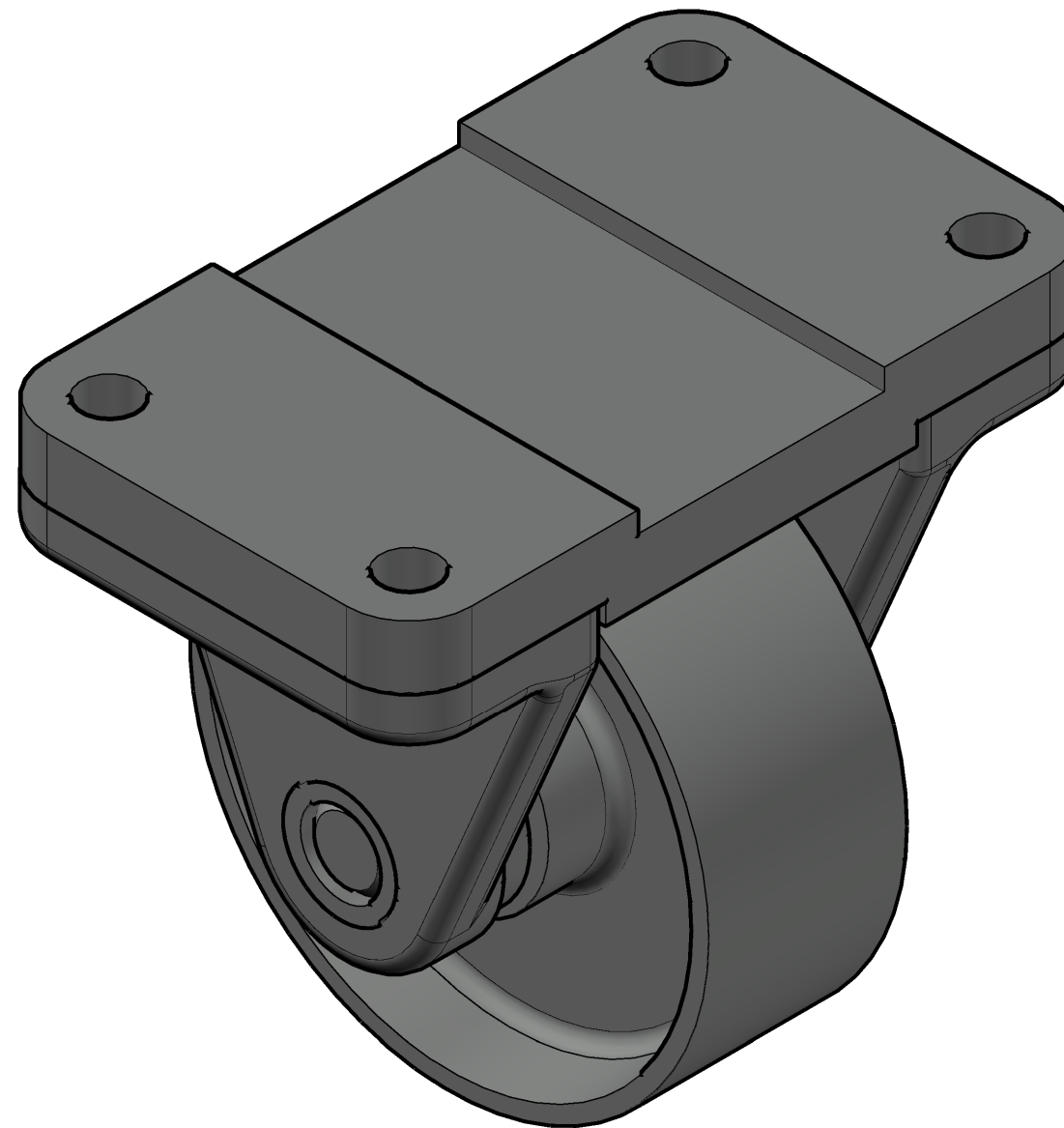
PARTS LIST

ITEM	QTY.	PART NAME	MATERIAL
1	1	TOP PLATE	MALLEABLE IRON
2	1	WHEEL	MALLEABLE IRON
3	2	AXLE SUPPORT	MALLEABLE IRON
4	1	AXLE	SAE 1020
5	2	BUSHING	BRONZE



DIGITAL DESIGN
GRAPHICS
TECHNOLOGY

WWW.DDGT.NET



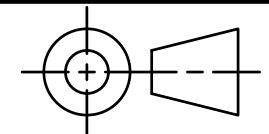
CASTER ASSEMBLY
SCALE 1:1

METRIC

GENERAL NOTES

FASTEN ASSEMBLY TO A 6mm STEEL PLATE BY FOUR M10 X 40mm LONG HEX HEAD BOLTS, NUTS AND LOCK WASHERS.

ROUNDS AND FILLETS R3



TOLERANCES UNLESS SPECIFIED:
DECIMAL INCHES:
X = ±.020
XX = ±.010
XXX = ±.005
FRACTIONAL ±1/64"
ANGLES ±1 DEGREE
SURFACES 32

CLASS: DDGT 120

ASSIGNMENT NO: 60

AUTOCAD DRAWING NAME:
CASTER ASSEMBLY

FIG NO: 9-51

MANAGER: G. STROMMEN

DRAFTER: N. HENDERSON

DATE: 11/30/2023

SCALE: AS NOTED

PAGE NO: 1 OF 4

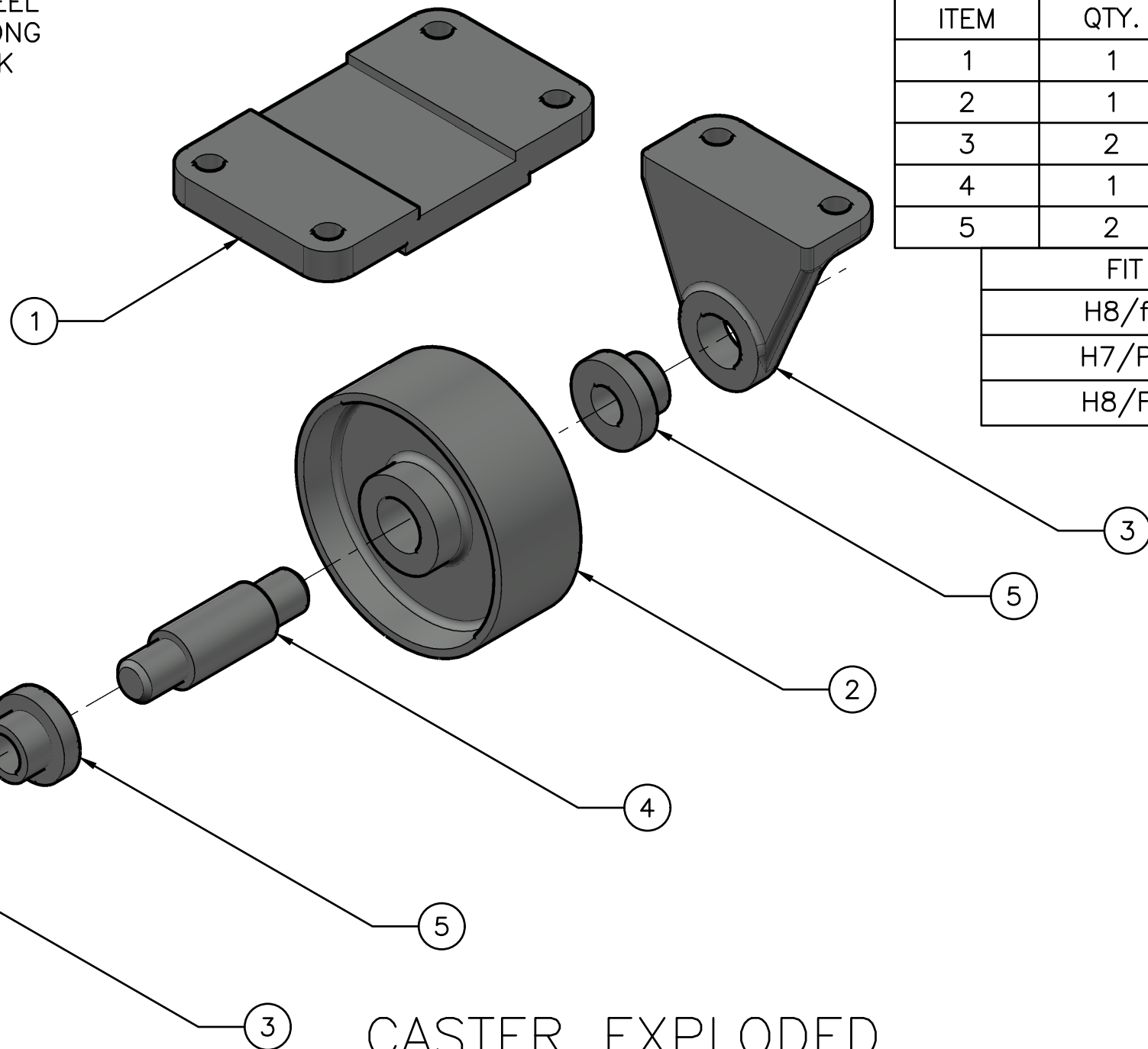
LEGEND

- ∅ DIAMETER
- R RADIUS
- ° DEGREES
- SPOTFACE/COUNTERBORE

GENERAL NOTES

FASTEN ASSEMBLY TO A 6mm STEEL PLATE BY FOUR M10 X 40mm LONG HEX HEAD BOLTS, NUTS AND LOCK WASHERS.

ROUNDS AND FILLETS R3



CASTER EXPLODED ASSEMBLY
SCALE 1:2

PARTS LIST

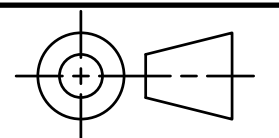
ITEM	QTY.	PART NAME
1	1	TOP PLATE
2	1	WHEEL
3	2	AXLE SUPPORT
4	1	AXLE
5	2	BUSHING

FIT	PARTS
H8/f7	4 AND 5
H7/P6	3 AND 5
H8/F7	2 AND 4



DIGITAL DESIGN GRAPHICS TECHNOLOGY

WWW.DDGT.NET



TOLERANCES UNLESS SPECIFIED:
DECIMAL INCHES:
X = ±.020
XX = ±.010
XX = ±.005
FRACTIONAL ±1/64"
ANGLES ±1 DEGREE
SURFACES 3/2

CLASS: DDGT 120

ASSIGNMENT NO: 60

AUTOCAD DRAWING NAME:
CASTER ASSEMBLY

FIG NO: 9-51

MANAGER: G. STROMMEN

DRAFTER: N. HENDERSON

DATE: 11/30/2023

SCALE: AS NOTED

PAGE NO: 2 OF 4

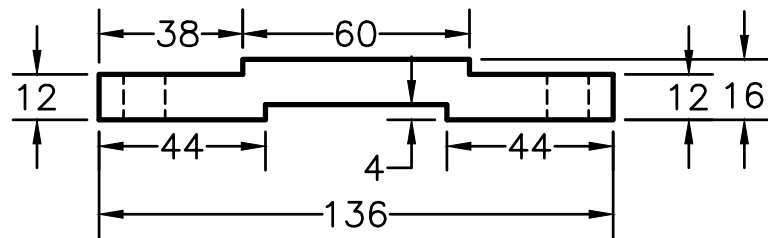
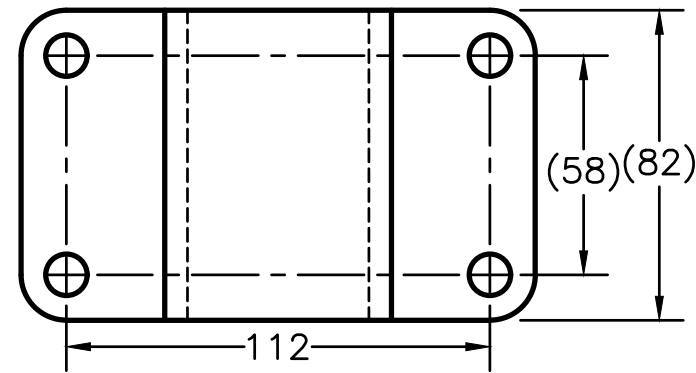
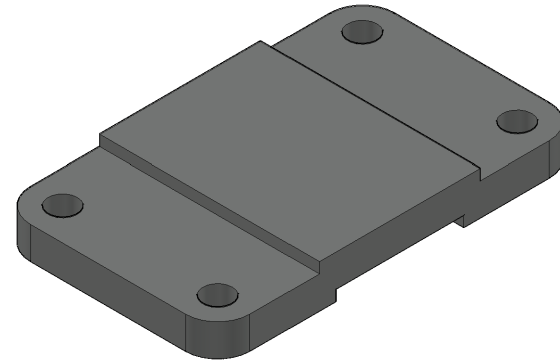
LEGEND

- ∅ DIAMETER
- R RADIUS
- DEGREES
- SPOTFACE/COUNTERBORE

GENERAL NOTES

FASTEN ASSEMBLY TO A 6mm STEEL PLATE BY FOUR M10 X 40mm LONG HEX HEAD BOLTS, NUTS AND LOCK WASHERS.

ROUNDS AND FILLETS R3



TOP PLATE
SCALE 1:2

METRIC

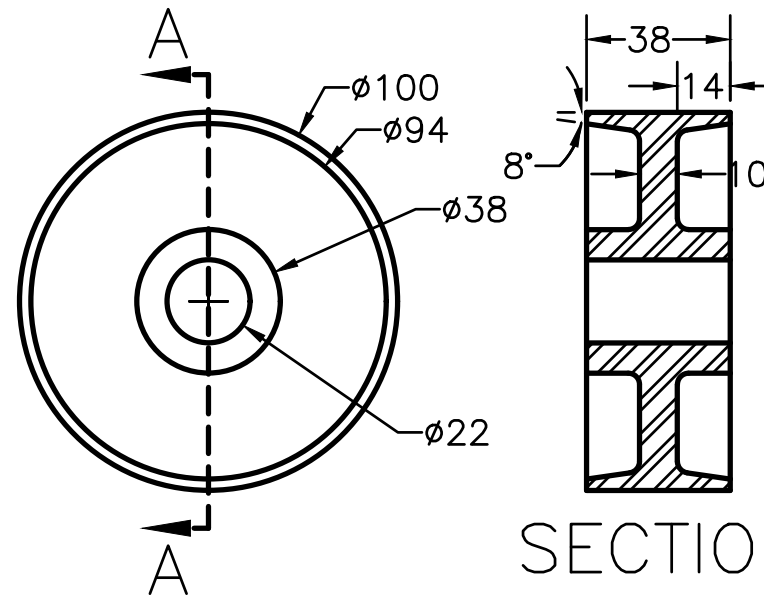
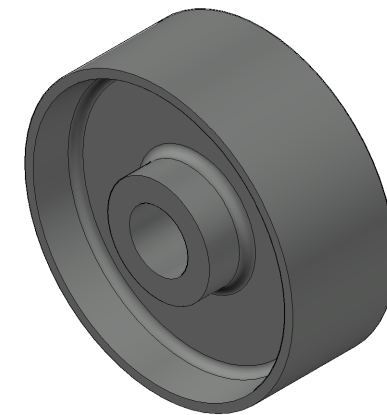
PARTS LIST

ITEM	QTY.	PART NAME
1	1	TOP PLATE
2	1	WHEEL



DIGITAL DESIGN
GRAPHICS
TECHNOLOGY

WWW.DDGT.NET

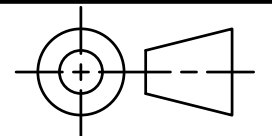


SECTION
A-A

WHEEL
SCALE 1:2

LEGEND

- ∅ DIAMETER
- R RADIUS
- ° DEGREES
- SPOTFACE/COUNTERBORE



TOLERANCES UNLESS SPECIFIED:
DECIMAL INCHES:
X = ±.020
XX = ±.010
XX = ±.005
FRACTIONAL ±1/64"
ANGLES ±1 DEGREE
SURFACES 32

CLASS: DDGT 120

ASSIGNMENT NO: 60

AUTOCAD DRAWING NAME:
CASTER ASSEMBLY

FIG NO: 9-51

MANAGER: G. STROMMEN

DRAFTER: N. HENDERSON

DATE: 11/30/2023

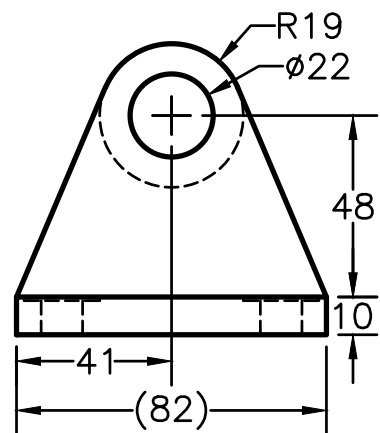
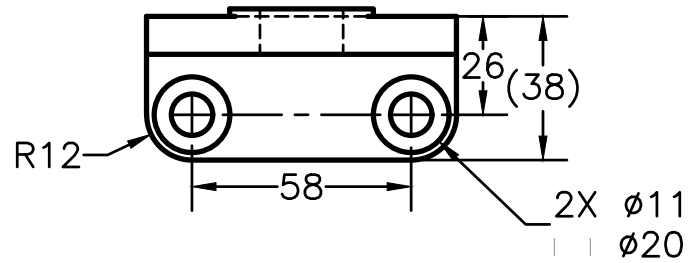
SCALE: AS NOTED

PAGE NO: 3 OF 4

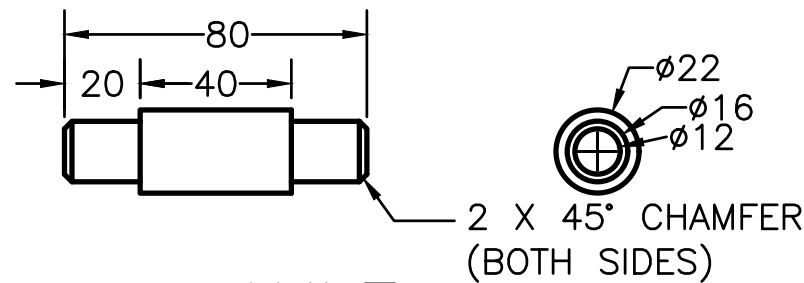
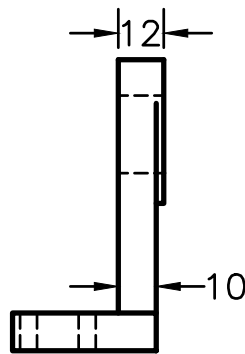
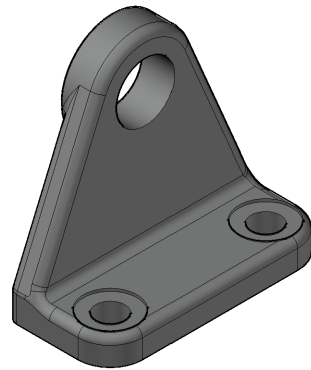
GENERAL NOTES

FASTEN ASSEMBLY TO A 6mm STEEL PLATE BY FOUR M10 X 40mm LONG HEX HEAD BOLTS, NUTS AND LOCK WASHERS.

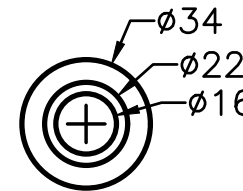
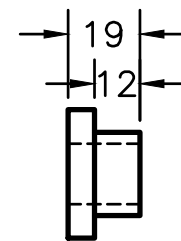
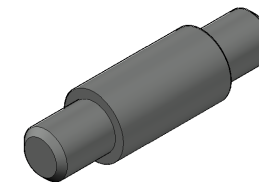
ROUNDS AND FILLETS R3



AXLE SUPPORT
SCALE 1:2



AXLE
SCALE 1:2



BUSHING
SCALE 1:2

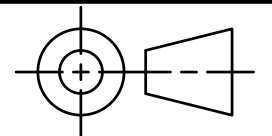
PARTS LIST

ITEM	QTY.	PART NAME
3	2	AXLE SUPPORT
4	1	AXLE
5	2	BUSHING



DIGITAL DESIGN
GRAPHICS
TECHNOLOGY

WWW.DDGT.NET



TOLERANCES UNLESS SPECIFIED:
DECIMAL INCHES:
X = ±.020
XX = ±.010
XX = ±.005
FRACTIONAL ±1/64"
ANGLES ±1 DEGREE
SURFACES 32

CLASS: DDGT 120

ASSIGNMENT NO: 60

AUTOCAD DRAWING NAME:
CASTER ASSEMBLY

FIG NO: 9-51

MANAGER: G. STROMMEN

DRAFTER: N. HENDERSON

DATE: 11/30/2023

SCALE: AS NOTED

PAGE NO: 4 OF 4

METRIC

LEGEND

- Ø DIAMETER
- R RADIUS
- ° DEGREES
- SPOTFACE/COUNTERBORE