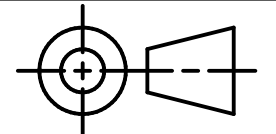


PARTS LIST			
ITEM	QTY	PART NUMBER	MATERIAL
1	1	TOP PLATE	MALLEABLE IRON
2	1	WHEEL	MALLEABLE IRON
3	2	AXLE SUPPORT	MALLEABLE IRON
4	1	AXLE	SAE 1020
5	2	BUSHING	BRONZE



DIGITAL DESIGN  
GRAPHICS  
TECHNOLOGY

WWW.DDGT.NET



TOLERANCES UNLESS SPECIFIED:  
MILLIMETERS:  
WHOLE NUMBERS = ±.5  
X = ±.25  
XX = ±.12  
FRACTIONAL ±1/64"  
ANGLES ±1 DEGREE  
SURFACES <sup>32</sup> ✓

CLASS: DDGT120

ASSIGNMENT #: 67

INVENTOR DRAWING NAME:  
9-51 CASTER ASSEMBLY

FIG #: 9-51

MANAGER: G. STROMMEN

DRAFTER: N. HENDERSON

DATE: 11/9/2023

SCALE: AS NOTED

PAGE #: 1 OF 4

METRIC

CASTER ASSEMBLY  
SCALE 1 : 1

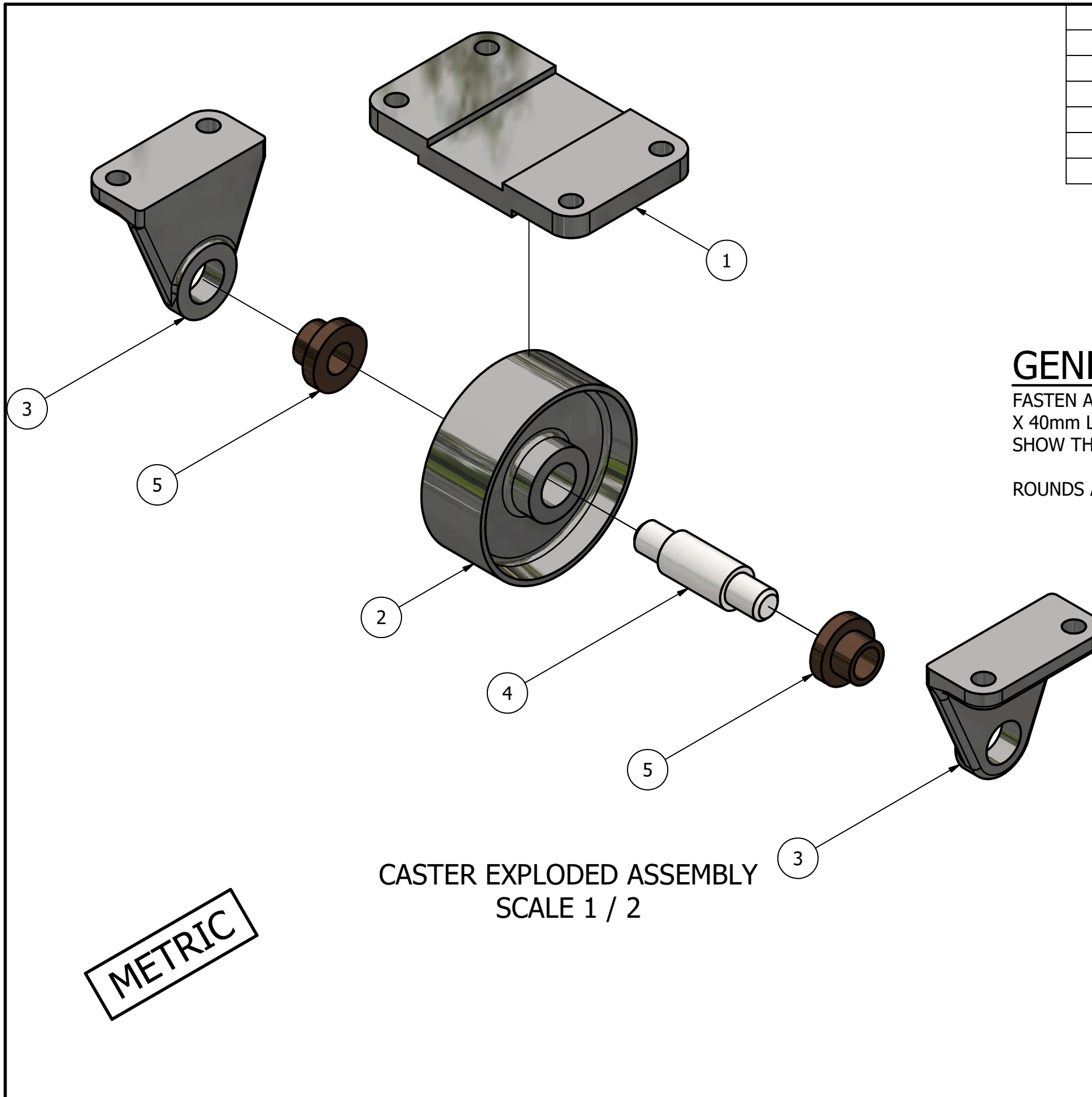
**GENERAL NOTES:**

FASTEN ASSEMBLY TO A 6mm STEEL PLATE BY FOR M10 X 40mm LG HEX HD BOLTS, NUTS AND LOCKWASHERS. SHOW THE STEEL PLATE IN PHANTOM LINES.

ROUNDS AND FILLETS R3

**LEGEND:**

- ∅ DIAMETER
- R RADIUS
- ° DEGREES
- ┌ SPOTFACE/  
COUNTERBORE



PARTS LIST		
ITEM	QTY	PART NUMBER
1	1	TOP PLATE
2	1	WHEEL
3	2	AXLE SUPPORT
4	1	AXLE
5	2	BUSHING

FIT	BETWEEN PARTS
H8/f7	4 AND 5
H7/p6	3 AND 5
H8/f7	2 AND 4

### GENERAL NOTES:

FASTEN ASSEMBLY TO A 6mm STEEL PLATE BY FOR M10 X 40mm LG HEX HD BOLTS, NUTS AND LOCKWASHERS. SHOW THE STEEL PLATE IN PHANTOM LINES.

ROUNDS AND FILLETS R3

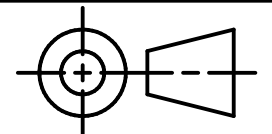
### LEGEND:

- ∅ DIAMETER
- R RADIUS
- ° DEGREES
- SPOTFACE/  
COUNTERBORE



DIGITAL DESIGN  
GRAPHICS  
TECHNOLOGY

WWW.DDGT.NET



TOLERANCES UNLESS SPECIFIED:  
MILLIMETERS:  
WHOLE NUMBERS = ±.5  
X = ±.25  
XX = ±.12  
FRACTIONAL ±1/64"  
ANGLES ±1 DEGREE  
SURFACES <sup>32</sup>✓

CLASS: DDGT120

ASSIGNMENT #: 67

INVENTOR DRAWING NAME:  
9-51 CASTER ASSEMBLY

FIG #: 9-51

MANAGER: G. STROMMEN

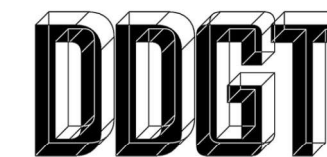
DRAFTER: N. HENDERSON

DATE: 11/9/2023

SCALE: AS NOTED

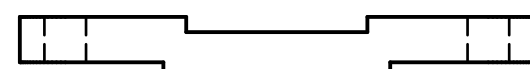
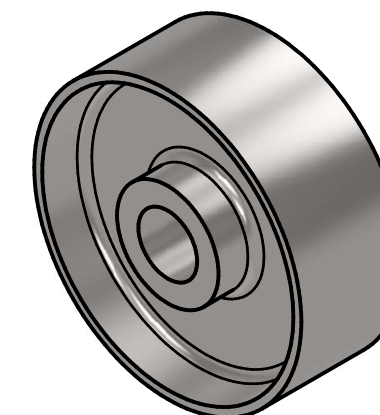
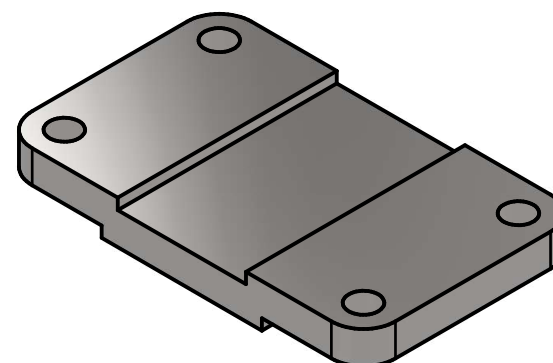
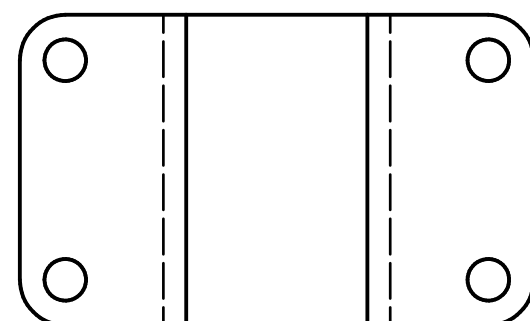
PAGE #: 2 OF 4

PARTS LIST		
ITEM	QTY	PART NUMBER
1	1	TOP PLATE
2	1	WHEEL



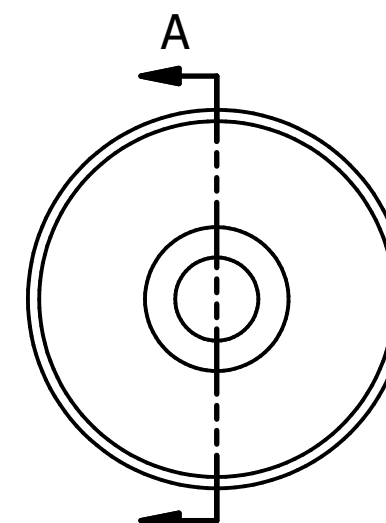
DIGITAL DESIGN  
GRAPHICS  
TECHNOLOGY

WWW.DDGT.NET

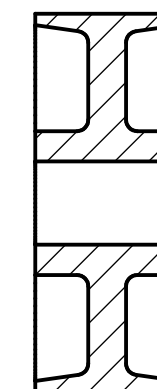


TOP PLATE  
SCALE 1 / 2

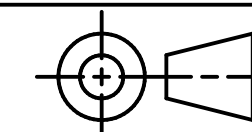
METRIC



A  
WHEEL  
SCALE 1 / 2



SECTION A-A  
SCALE 1 / 2



TOLERANCES UNLESS SPECIFIED:  
MILLIMETERS:  
WHOLE NUMBERS = ±.5  
X = ±.25  
XX = ±.12  
FRACTIONAL ±1/64"  
ANGLES ±1 DEGREE  
SURFACES <sup>32</sup> ✓

CLASS: DDGT120

ASSIGNMENT #: 67

INVENTOR DRAWING NAME:  
9-51 CASTER ASSEMBLY

FIG #: 9-51

MANAGER: G. STROMMEN

DRAFTER: N. HENDERSON

DATE: 11/9/2023

SCALE: AS NOTED

PAGE #: 3 OF 4

### GENERAL NOTES:

FASTEN ASSEMBLY TO A 6mm STEEL PLATE BY FOR M10 X 40mm LG HEX HD BOLTS, NUTS AND LOCKWASHERS.  
SHOW THE STEEL PLATE IN PHANTOM LINES.

ROUNDS AND FILLETS R3

### LEGEND:

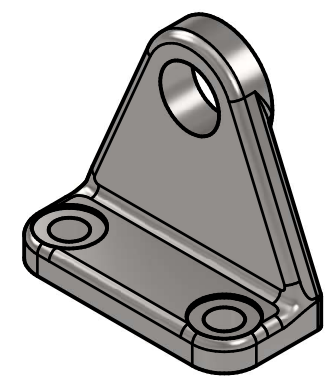
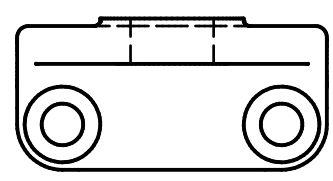
- ∅ DIAMETER
- R RADIUS
- ° DEGREES
- ⌊ SPOTFACE/  
COUNTERBORE

PARTS LIST		
ITEM	QTY	PART NUMBER
3	2	AXLE SUPPORT
4	1	AXLE
5	2	BUSHING

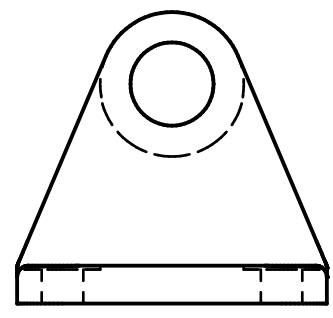
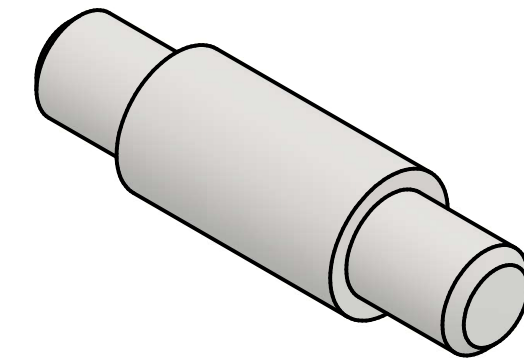


DIGITAL DESIGN  
GRAPHICS  
TECHNOLOGY

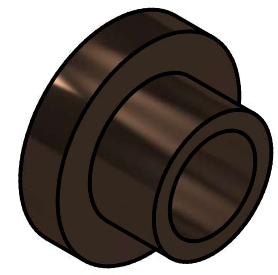
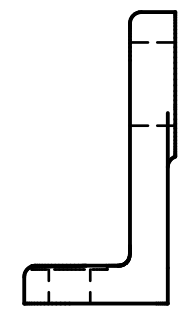
WWW.DDGT.NET



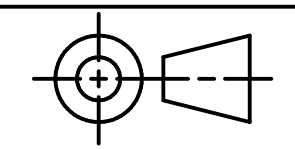
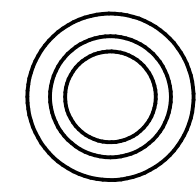
METRIC



AXLE SUPPORT  
SCALE 1 / 2



AXLE  
SCALE 1 : 1



TOLERANCES UNLESS SPECIFIED:  
MILLIMETERS:  
WHOLE NUMBERS = ±.5  
X = ±.25  
XX = ±.12  
FRACTIONAL ±1/64"  
ANGLES ±1 DEGREE  
SURFACES <sup>32</sup> ✓

CLASS: DDGT120

ASSIGNMENT #: 67

INVENTOR DRAWING NAME:  
9-51 CASTER ASSEMBLY

FIG #: 9-51

MANAGER: G. STROMMEN

DRAFTER: N. HENDERSON

DATE: 11/9/2023

SCALE: AS NOTED

PAGE #: 4 OF 4

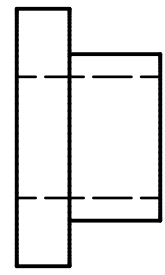
**GENERAL NOTES:**

FASTEN ASSEMBLY TO A 6mm STEEL PLATE BY FOR M10 X 40mm LG HEX HD BOLTS, NUTS AND LOCKWASHERS. SHOW THE STEEL PLATE IN PHANTOM LINES.

ROUNDS AND FILLETS R3

**LEGEND:**

- ∅ DIAMETER
- R RADIUS
- ° DEGREES
- ⌊ SPOTFACE/  
COUNTERBORE



BUSHING  
SCALE 1 : 1

