



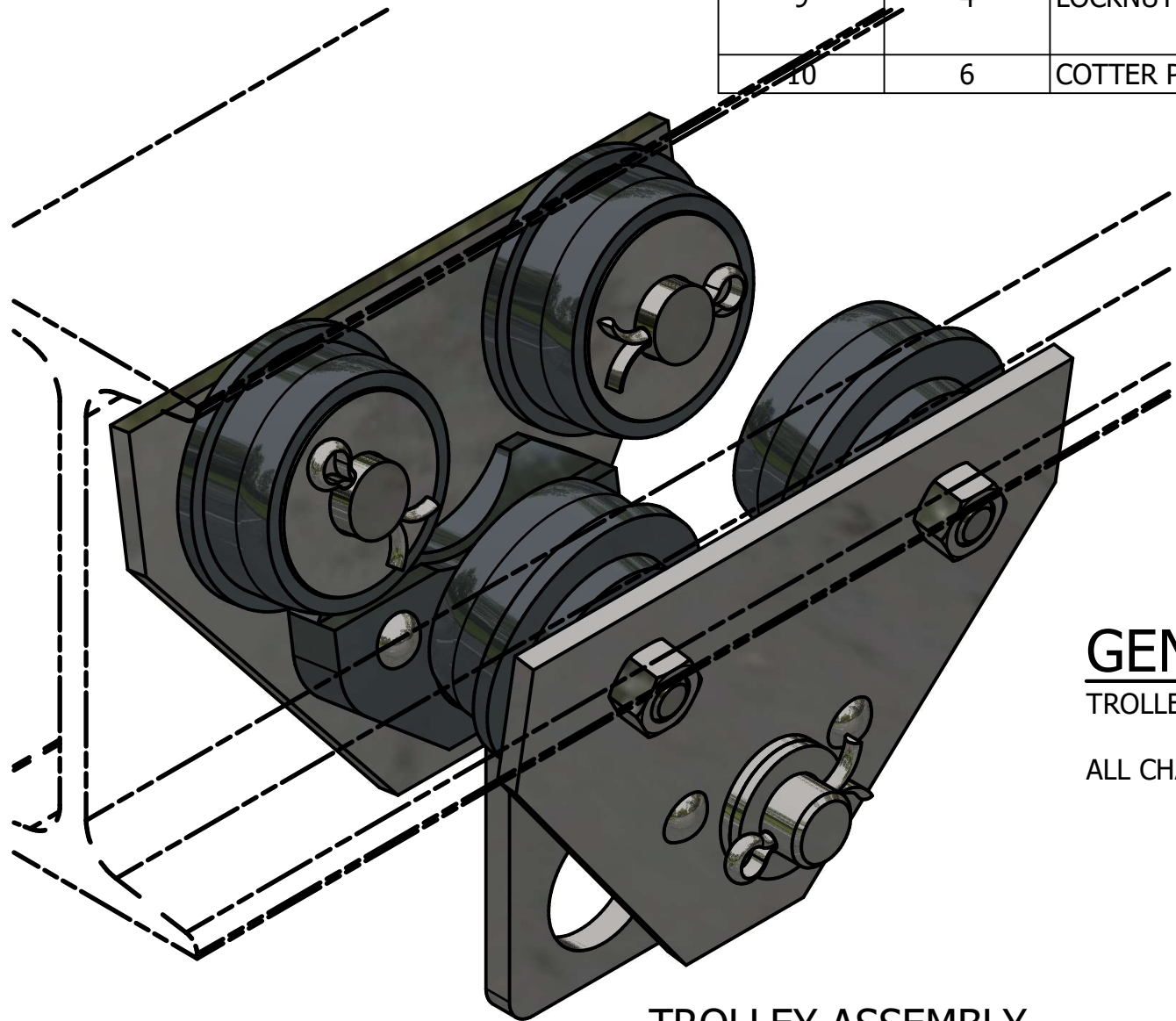
DIGITAL DESIGN
GRAPHICS
TECHNOLOGY

WWW.DDGT.NET

PARTS LIST

ITEM	QTY	PART NUMBER	MATERIAL	DESCRIPTION
1	2	SIDE PLATE SUB-ASSEMBLY		
1.1	1	SIDE PLATE	MILD STEEL	
1.2	1	GUIDE	CAST IRON	
1.3	2	RIVET	STANDARD	BUTTON HEAD, Ø10 X 60 LONG
2	1	AXLE	COLD ROLLED STEEL	
3	1	HOOK	MILD STEEL	10 THICK
4	44	ROLLER BEARING	COLD ROLLED STEEL	Ø10 X 38 LONG
5	4	WHEEL	CAST IRON	
6	4	WHEEL AXLE	COLD ROLLED STEEL	
7	12	ADJUSTING WASHER	STANDARD	Ø26ID X Ø44OD X 4 THICK
8	4	WASHER	STANDARD	Ø26ID X Ø65OD X 3 THICK
9	4	LOCKNUT	STANDARD	M16 x 2 (PREVAILIG TORQUE INSERT-TYPE)
10	6	COTTER PIN	STANDARD	Ø6 X 40 LONG

METRIC



TROLLEY ASSEMBLY
SCALE 1 / 2

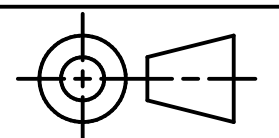
GENERAL NOTES:

TROLLEY TO BE MOUNTED ON A S200 X 34 BEAM

ALL CHAMFERS ARE 2 X 2 UNLESS OTHERWISE NOTED

LEGEND:

- ∅ DIAMETER
- R RADIUS
- ° DEGREES



TOLERANCES UNLESS SPECIFIED:
MILLIMETERS:
WHOLE NUMBERS = ±.5
X = ±.25
XX = ±.12
FRACTIONAL ±1/64"
ANGLES ±1 DEGREE
SURFACES ³² ✓

CLASS: DDGT 120

ASSIGNMENT #: 70

INVENTOR DRAWING NAME:
TROLLEY

FIG #: 14-83

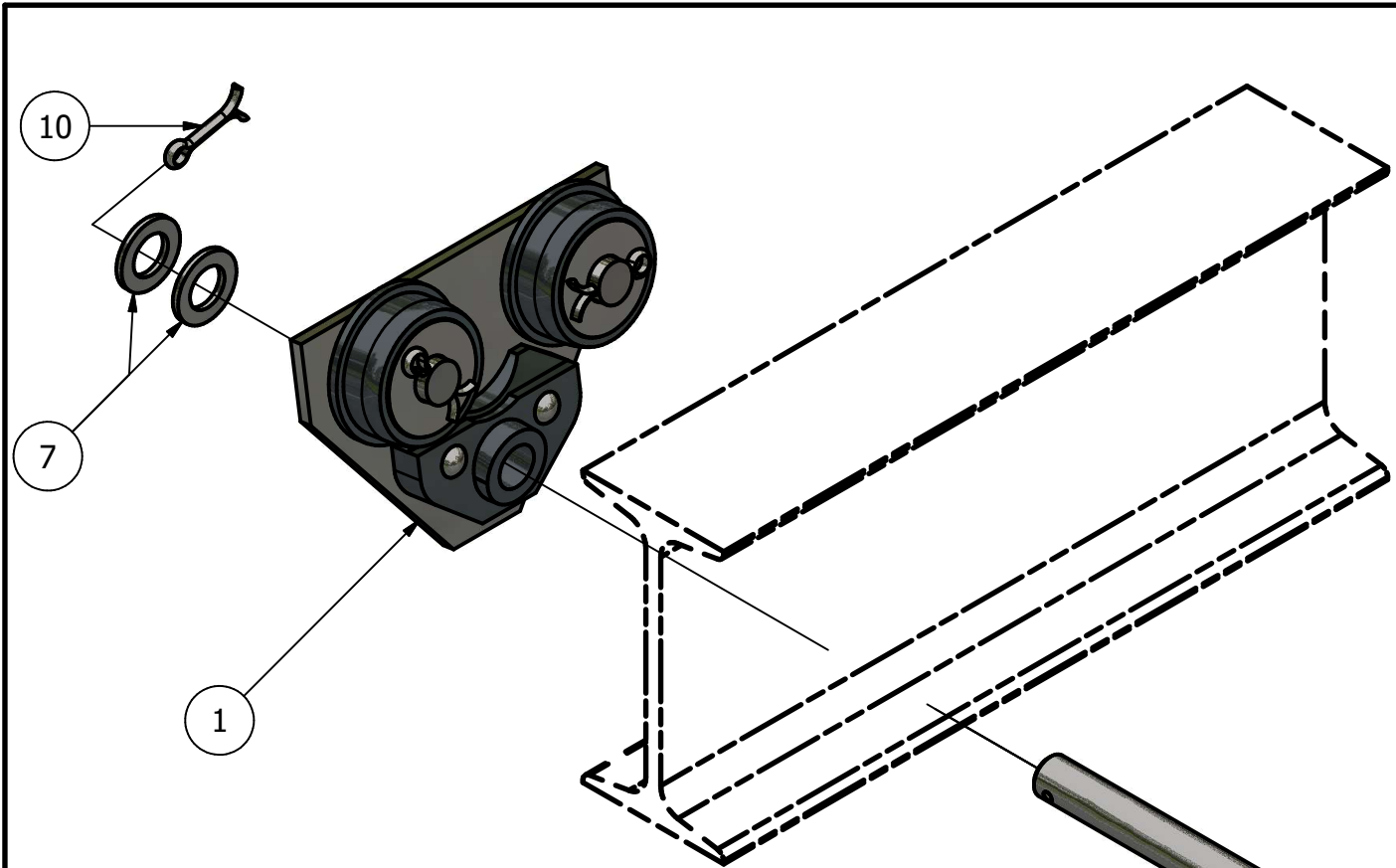
MANAGER: G. STROMMEN

DRAFTER: N. HENDERSON

DATE: 12/1/2023

SCALE: AS NOTED

PAGE #: 1 OF 6



PARTS LIST		
ITEM	QTY	PART NUMBER
1	2	SIDE PLATE SUB-ASSEMBLY
2	1	AXLE
3	1	HOOK
7	12	ADJUSTING WASHER
10	6	COTTER PIN



DIGITAL DESIGN
GRAPHICS
TECHNOLOGY

WWW.DDGT.NET

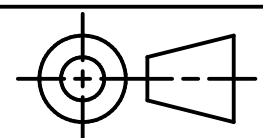
GENERAL NOTES:

TROLLEY TO BE MOUNTED ON A S200 X 34 BEAM

ALL CHAMFERS ARE 2 X 2 UNLESS OTHERWISE NOTED

LEGEND:

- ∅ DIAMETER
- R RADIUS
- ° DEGREES



TOLERANCES UNLESS SPECIFIED:
MILLIMETERS:
WHOLE NUMBERS = ±.5
X = ±.25
XX = ±.12
FRACTIONAL ±1/64"
ANGLES ±1 DEGREE
SURFACES ³² ✓

CLASS: DDGT 120

ASSIGNMENT #: 70

INVENTOR DRAWING NAME:
TROLLEY

FIG #: 14-83

MANAGER: G. STROMMEN

DRAFTER: N. HENDERSON

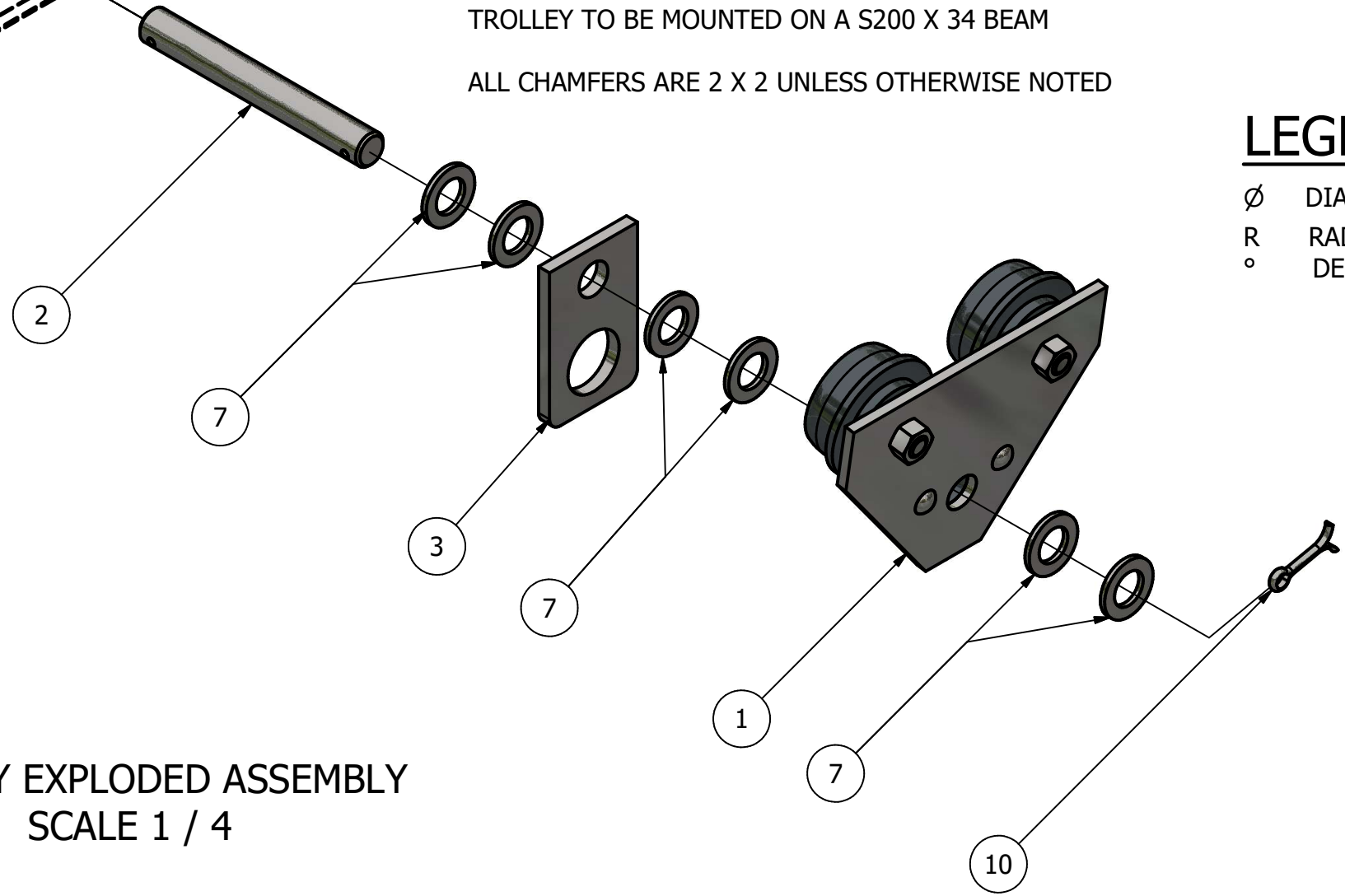
DATE: 12/1/2023

SCALE: AS NOTED

PAGE #: 2 OF 6

METRIC

TROLLEY EXPLODED ASSEMBLY
SCALE 1 / 4



GENERAL NOTES:

TROLLEY TO BE MOUNTED ON A S200 X 34 BEAM

ALL CHAMFERS ARE 2 X 2 UNLESS OTHERWISE NOTED

LEGEND:

- ∅ DIAMETER
- R RADIUS
- ° DEGREES

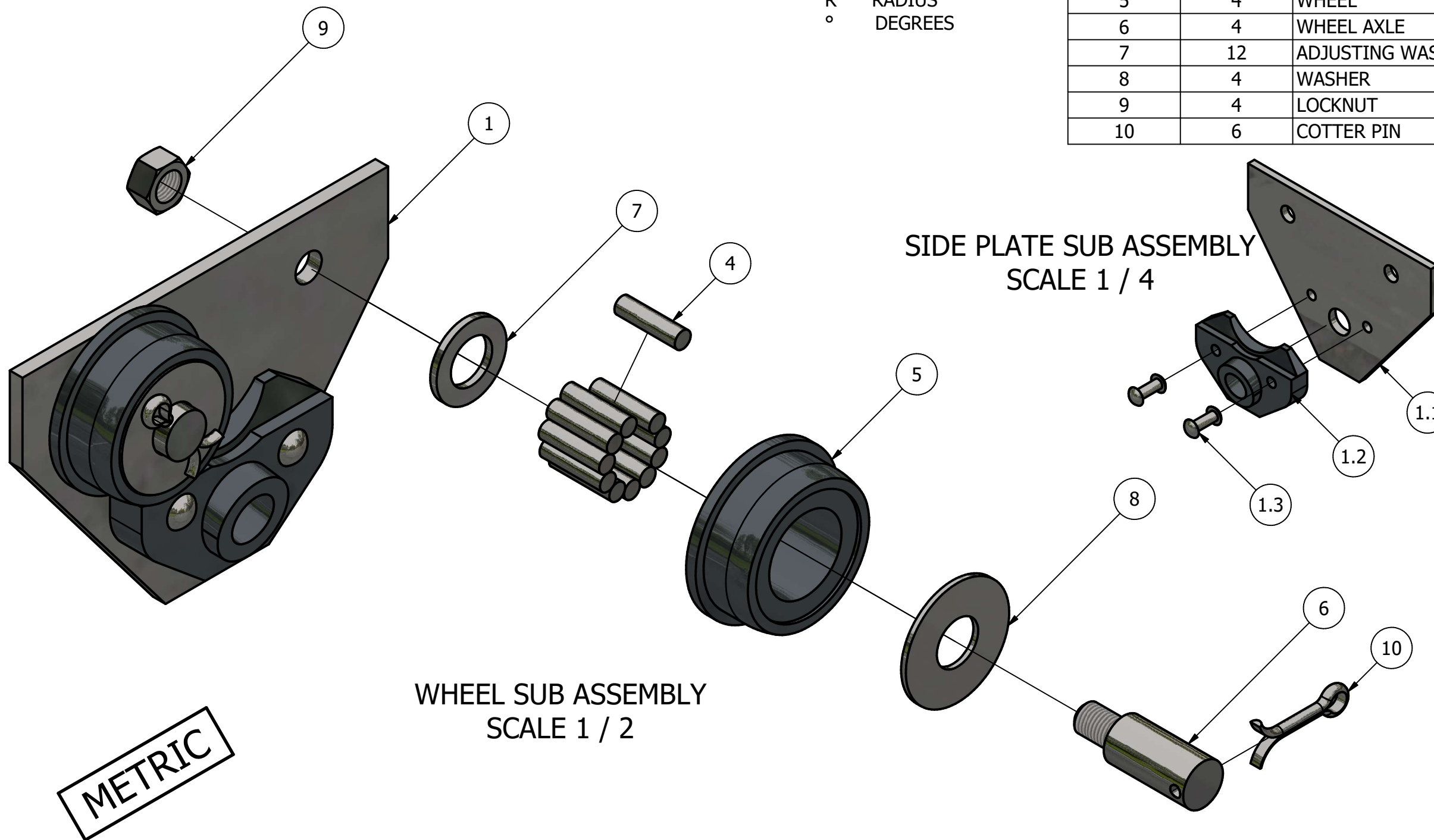
PARTS LIST

ITEM	QTY	PART NUMBER
1	2	SIDE PLATE SUB-ASSEMBLY
1.1	1	SIDE PLATE
1.2	1	GUIDE
1.3	2	RIVET
4	44	ROLLER BEARING
5	4	WHEEL
6	4	WHEEL AXLE
7	12	ADJUSTING WASHER
8	4	WASHER
9	4	LOCKNUT
10	6	COTTER PIN



DIGITAL DESIGN
GRAPHICS
TECHNOLOGY

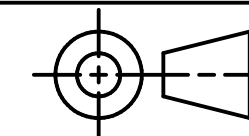
WWW.DDGT.NET



SIDE PLATE SUB ASSEMBLY
SCALE 1 / 4

WHEEL SUB ASSEMBLY
SCALE 1 / 2

METRIC



TOLERANCES UNLESS SPECIFIED:
MILLIMETERS:
WHOLE NUMBERS = ±.5
X = ±.25
XX = ±.12
FRACTIONAL ±1/64"
ANGLES ±1 DEGREE
SURFACES 32 ✓

CLASS: DDGT 120

ASSIGNMENT #: 70

INVENTOR DRAWING NAME:
TROLLEY

FIG #: 14-83

MANAGER: G. STROMMEN

DRAFTER: N. HENDERSON

DATE: 12/1/2023

SCALE: AS NOTED

PAGE #: 3 OF 6

PARTS LIST

ITEM	QTY	PART NUMBER
1.1	2	SIDE PLATE

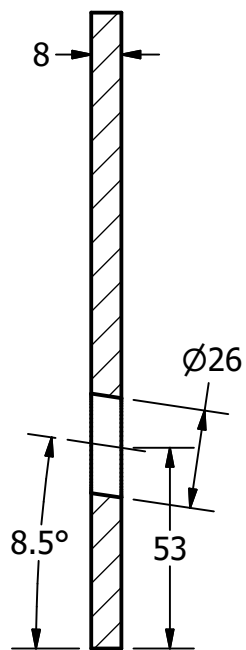
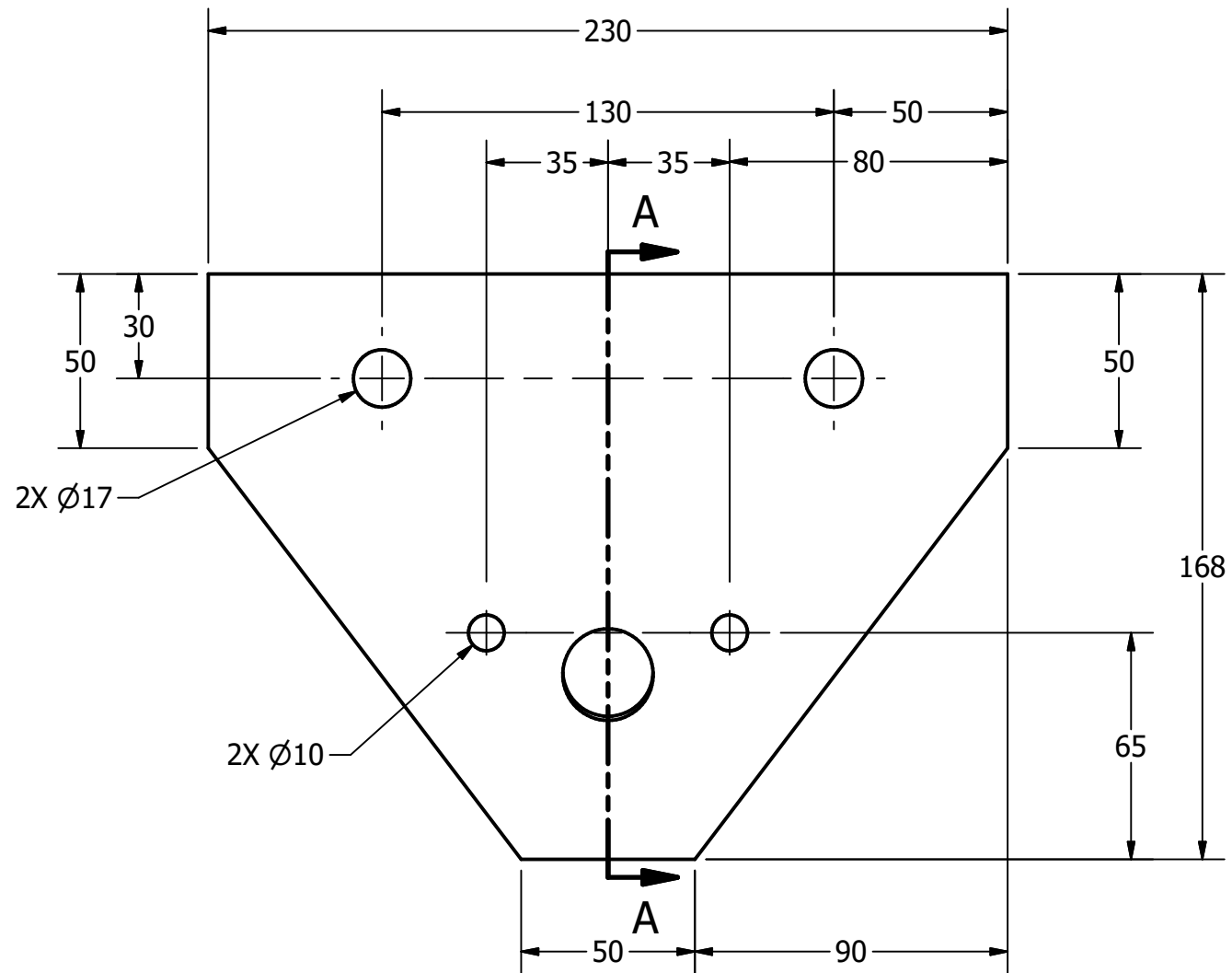
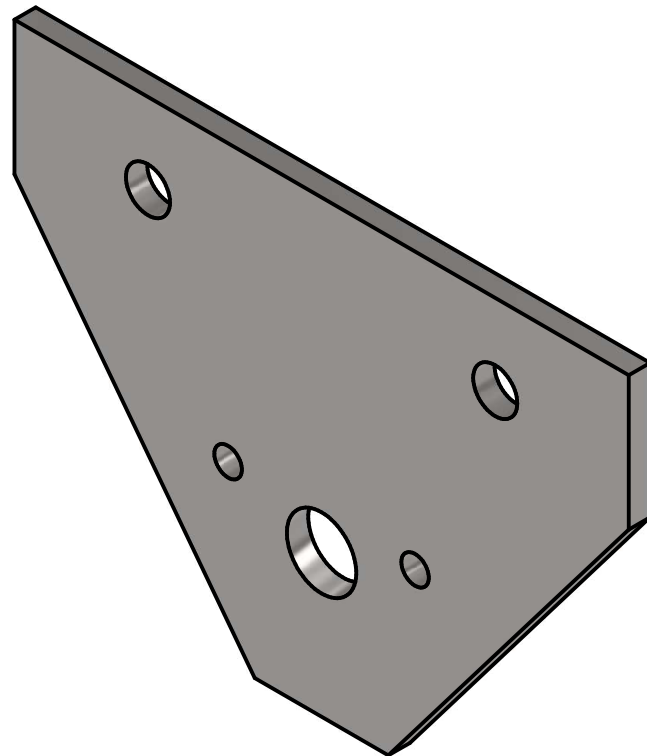


DIGITAL DESIGN
GRAPHICS
TECHNOLOGY

WWW.DDGT.NET

LEGEND:

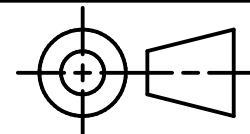
∅ DIAMETER
R RADIUS
° DEGREES



SECTION A-A
SCALE 1 / 2

SIDE PLATE
SCALE 1 / 2

METRIC



TOLERANCES UNLESS SPECIFIED:
MILLIMETERS:
WHOLE NUMBERS = ±.5
X = ±.25
XX = ±.12
FRACTIONAL ±1/64"
ANGLES ±1 DEGREE
SURFACES ³² ✓

CLASS: DDGT 120

ASSIGNMENT #: 70

INVENTOR DRAWING NAME:
TROLLEY

FIG #: 14-83

MANAGER: G. STROMMEN

DRAFTER: N. HENDERSON

DATE: 12/1/2023

SCALE: AS NOTED

PAGE #: 4 OF 6

GENERAL NOTES:

TROLLEY TO BE MOUNTED ON A S200 X 34 BEAM

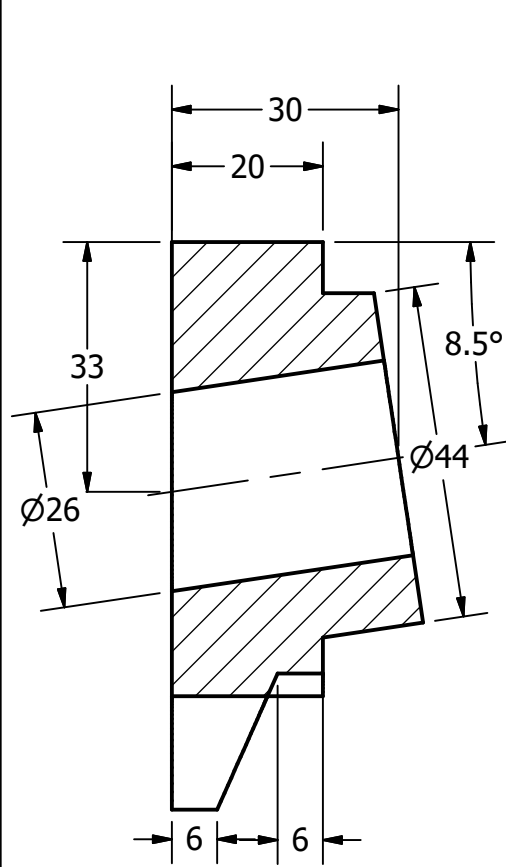
ALL CHAMFERS ARE 2 X 2 UNLESS OTHERWISE NOTED



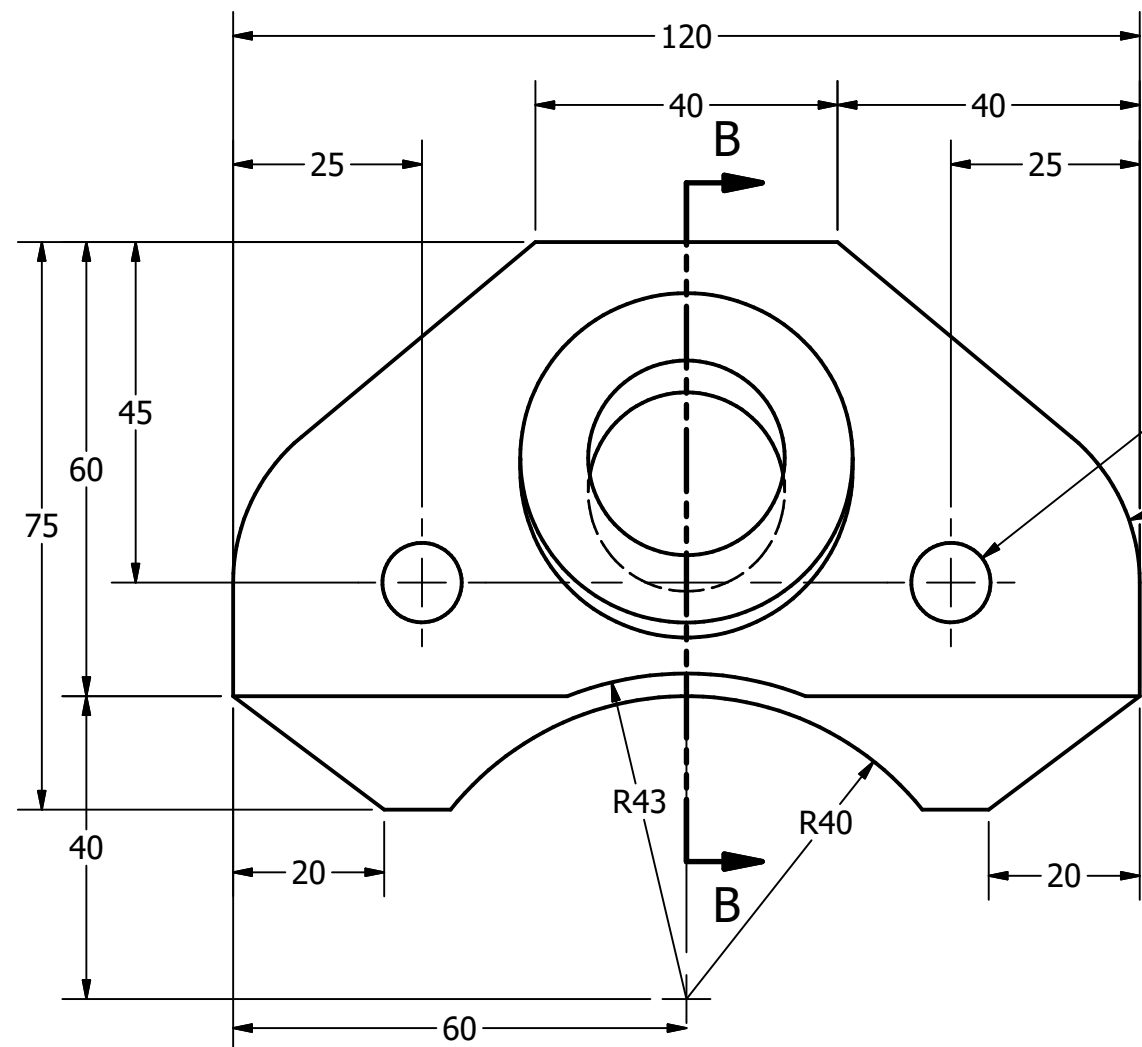
DIGITAL DESIGN
GRAPHICS
TECHNOLOGY

WWW.DDGT.NET

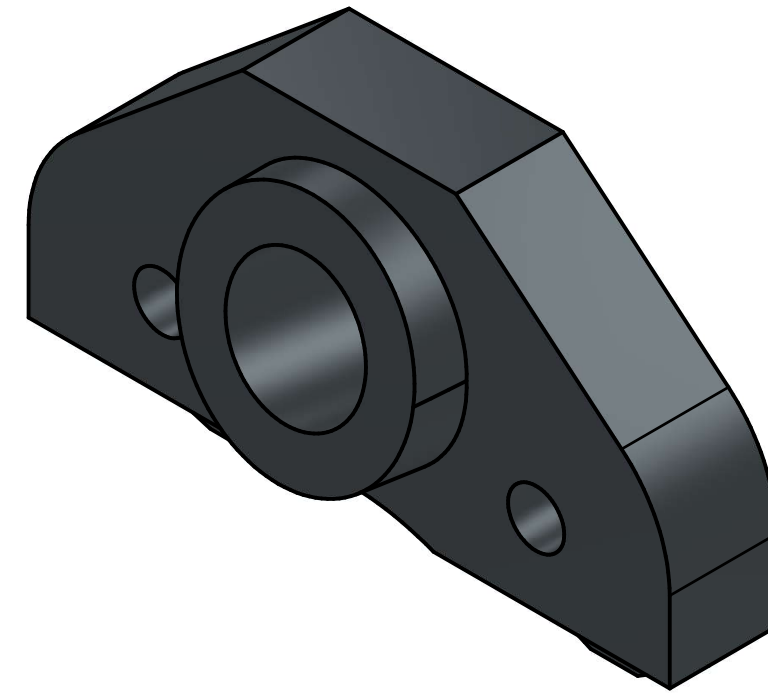
PARTS LIST		
ITEM	QTY	PART NUMBER
1.2	2	GUIDE
2	1	AXLE



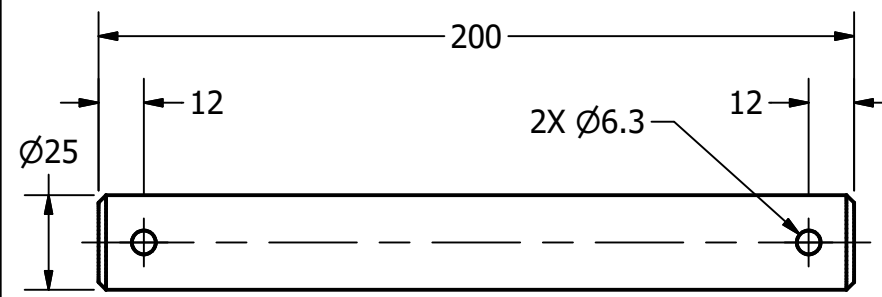
SECTION B-B
SCALE 1 : 1



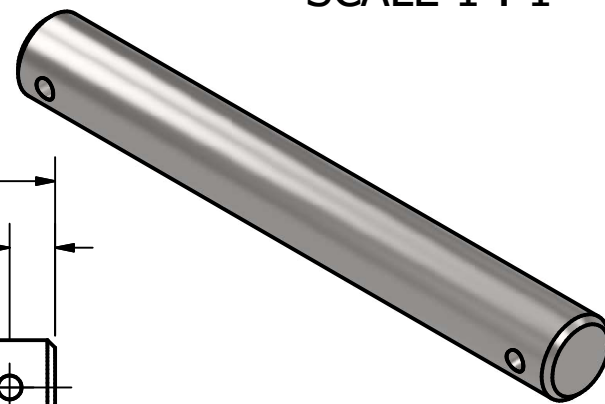
GUIDE
SCALE 1 : 1



METRIC



AXLE
SCALE 1 / 2



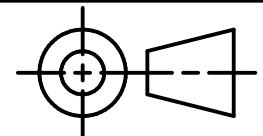
GENERAL NOTES:

TROLLEY TO BE MOUNTED ON A S200 X 34 BEAM

ALL CHAMFERS ARE 2 X 2 UNLESS OTHERWISE NOTED

LEGEND:

- ∅ DIAMETER
- R RADIUS
- ° DEGREES



TOLERANCES UNLESS SPECIFIED:
MILLIMETERS:
WHOLE NUMBERS = ±.5
X = ±.25
XX = ±.12
FRACTIONAL ±1/64"
ANGLES ±1 DEGREE
SURFACES 32 ✓

CLASS: DDGT 120

ASSIGNMENT #: 70

INVENTOR DRAWING NAME:
TROLLEY

FIG #: 14-83

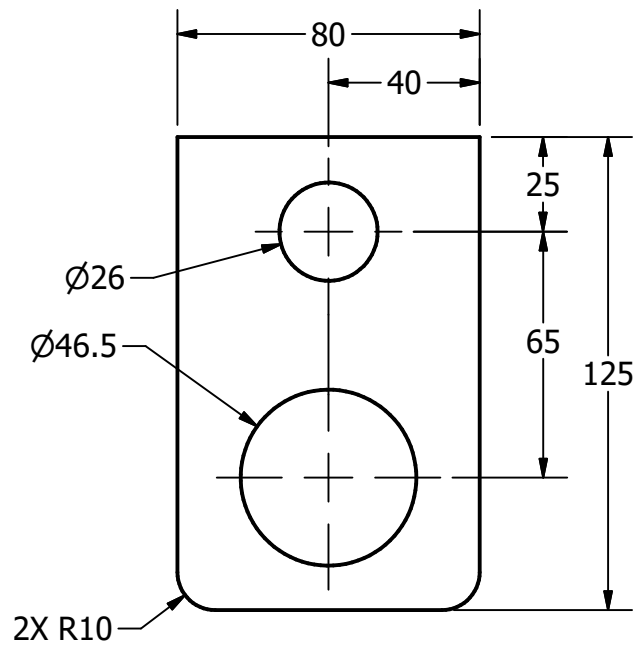
MANAGER: G. STROMMEN

DRAFTER: N. HENDERSON

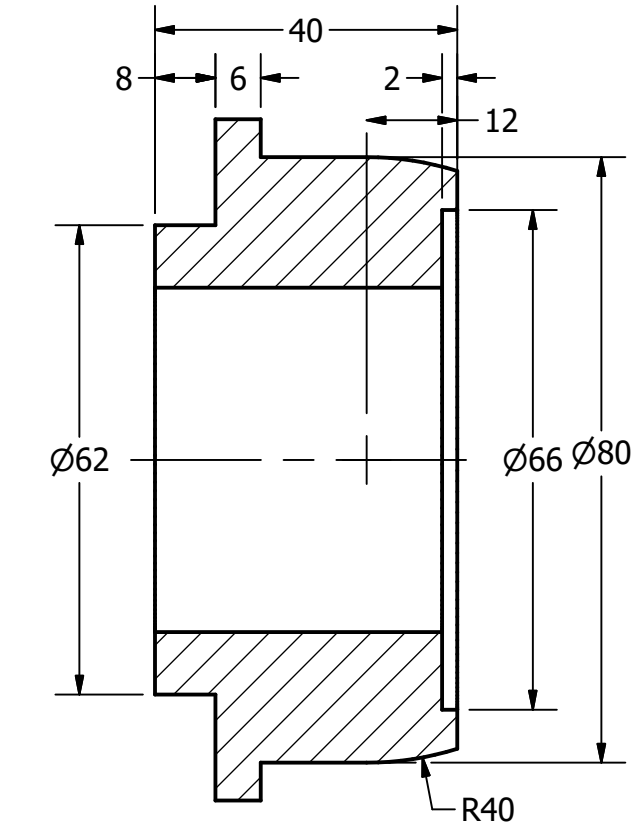
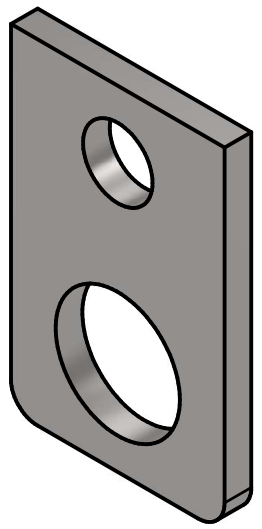
DATE: 12/1/2023

SCALE: AS NOTED

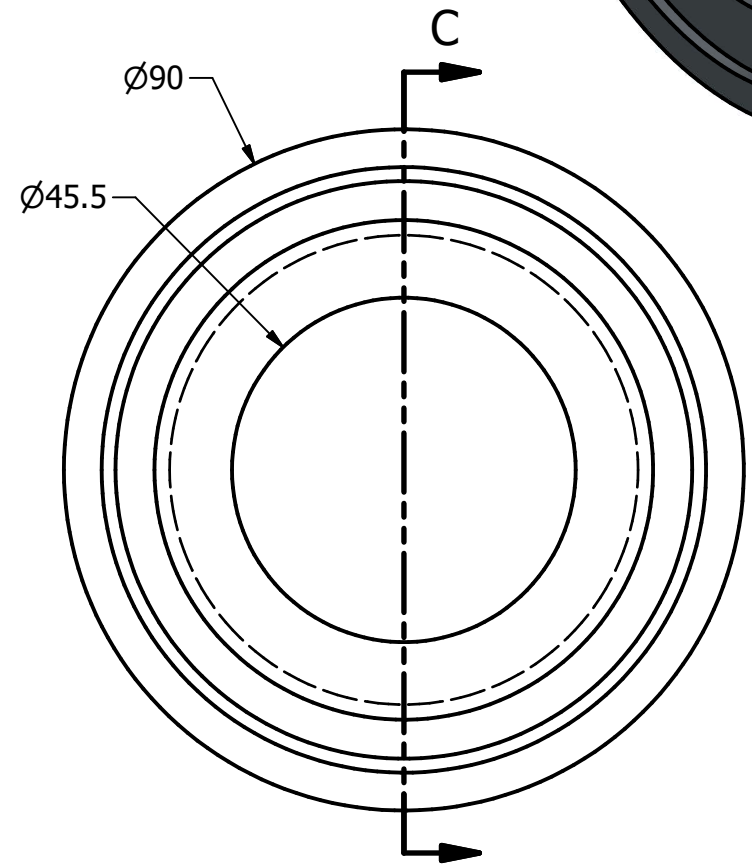
PAGE #: 5 OF 6



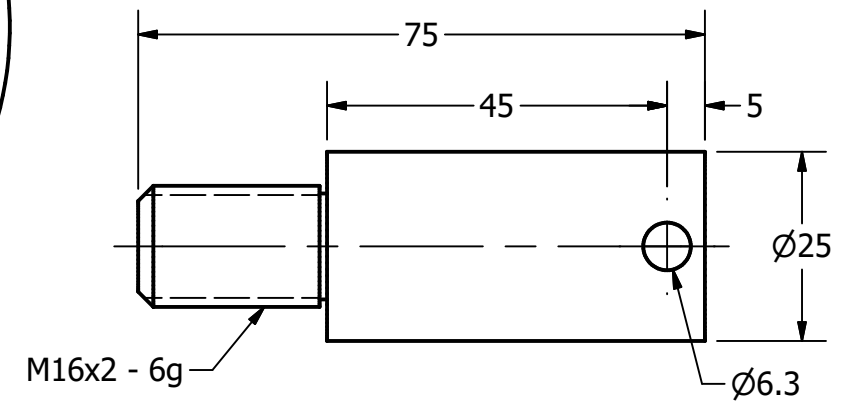
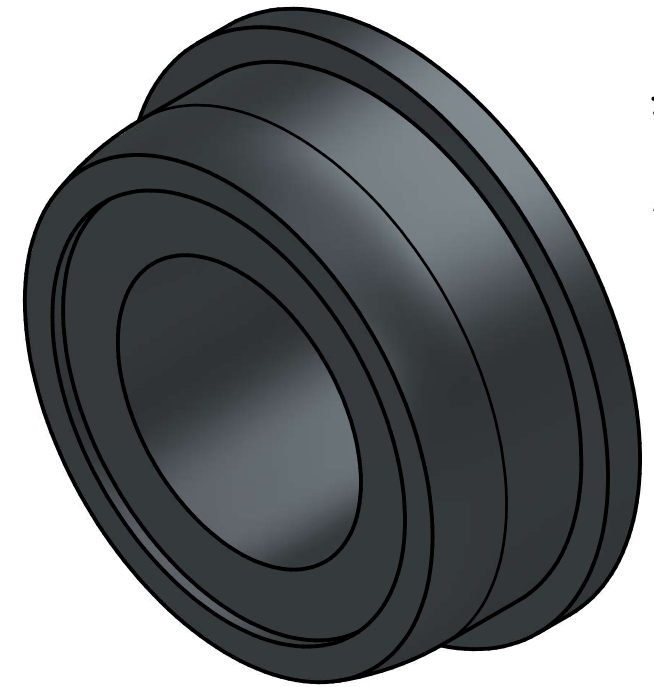
HOOK
SCALE 1 / 2



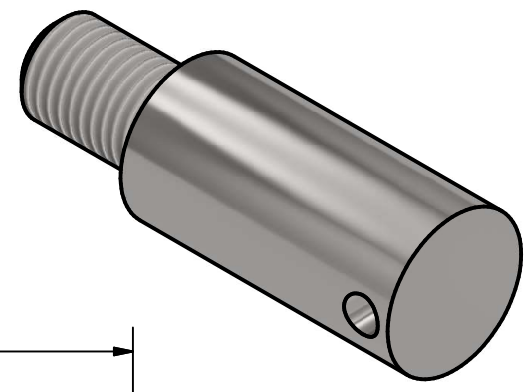
SECTION C-C
SCALE 1 : 1



WHEEL
SCALE 1 : 1



WHEEL AXLE
SCALE 1 : 1



PARTS LIST

ITEM	QTY	PART NUMBER
3	1	HOOK
5	4	WHEEL
6	4	WHEEL AXLE

GENERAL NOTES:

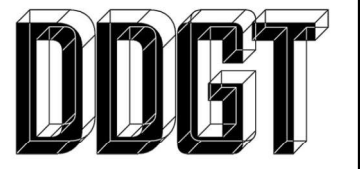
TROLLEY TO BE MOUNTED ON A S200 X 34 BEAM

ALL CHAMFERS ARE 2 X 2 UNLESS OTHERWISE NOTED

LEGEND:

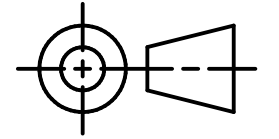
- ∅ DIAMETER
- R RADIUS
- ° DEGREES

METRIC



DIGITAL DESIGN
GRAPHICS
TECHNOLOGY

WWW.DDGT.NET



TOLERANCES UNLESS SPECIFIED:
MILLIMETERS:
WHOLE NUMBERS = ±.5
X = ±.25
XX = ±.12
FRACTIONAL ±1/64"
ANGLES ±1 DEGREE
SURFACES ³²✓

CLASS: DDGT 120

ASSIGNMENT #: 70

INVENTOR DRAWING NAME:
TROLLEY

FIG #: 14-83

MANAGER: G. STROMMEN

DRAFTER: N. HENDERSON

DATE: 12/1/2023

SCALE: AS NOTED

PAGE #: 6 OF 6