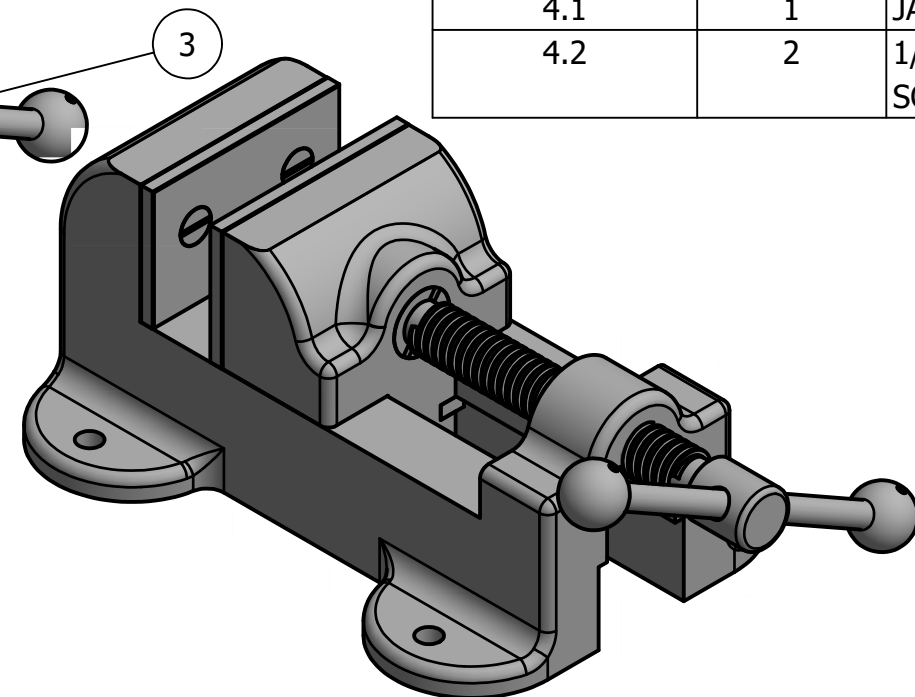


MASTER EXPLODED ASSEMBLY
SCALE 1:2

PARTS LIST			
ITEM	QTY	PART NUMBER	MATERIAL
1	1	BASE	CAST IRON
2	1	JAW SUB-ASSEMBLY	
2.1	1	SLIDING JAW	CAST IRON
2.3	2	SLIDE KEY	SAE 1020
2.4	2	SET SCREW	SAE 1016
3	1	SCREW SUB-ASSEMBLY	
3.1	1	WISE SCREW	SAE 3140
3.2	1	HANDLE ROD	COLD-ROLLED STEEL
3.3	1	SPECIAL KEY	SAE 1020
3.4	2	HANDLE BALL	SAE 1020
3.5	2	#000 TAPER PIN	TYPICAL
3.6	1	COLLAR	SAE 1020
4	2	JAW PLATE SUB-ASSEMBLY	
4.1	1	JAW PLATE	SAE 3140
4.2	2	1/4" FLATHEAD MACHINE SCREW	TYPICAL



MASTER ASSEMBLY
SCALE 1:2

LEGEND:

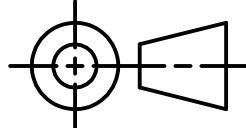
- ° DEGREES
- ∅ DIAMETER
- R RADIUS
- COUNTERBORE
- ∇ DEPTH
- ∨ COUNTERSINK

GENERAL NOTES

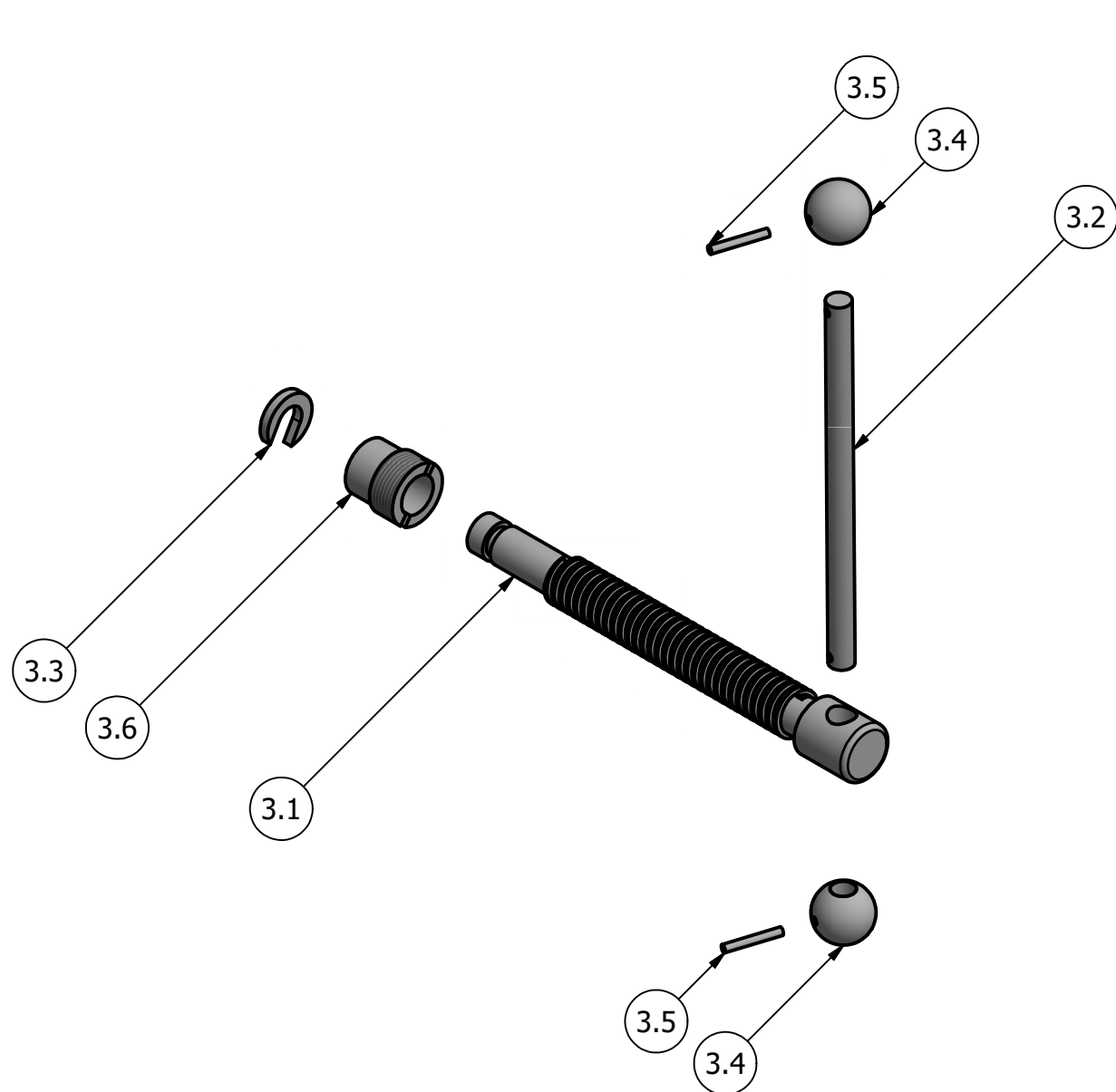
FILLETS AND ROUNDS R.125 UNLESS OTHERWISE NOTED

DDGT
DIGITAL DESIGN
GRAPHICS
TECHNOLOGY
WWW.DDGT.NET

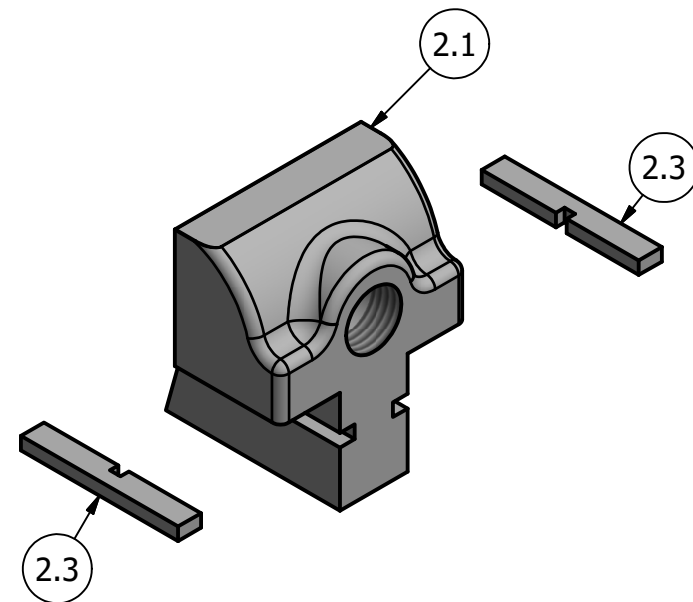

Sebastien Bolle
sebastien.a.bolle@gmail.com
www.ddgt.net/StudentPages/sbolle


TOLERANCES UNLESS SPECIFIED:
DECIMAL INCHES:
X = ±.020
XX = ±.010
XXX = ±.005
FRACTIONAL ±1/64"
ANGLES ±1 DEGREE
SURFACES 32 ✓

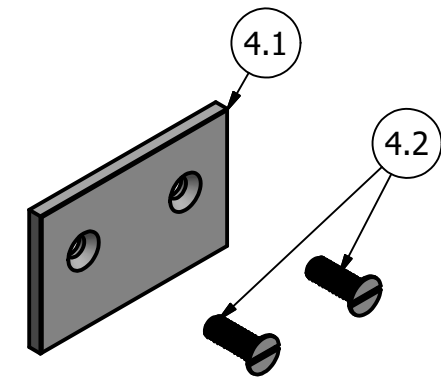
COURSE:	DDGT240
INVENTOR DRAWING NAME:	MACHINE VISE
FIG#:	14-71
DRAFTER:	S. BOLLE
DATE:	8/16/2017
SCALE:	AS NOTED
PAGE #:	1 OF 4



SCREW EXPLODED SUB-ASSEMBLY
SCALE 1:2



JAW SUB-ASSEMBLY
SCALE 1:2



JAW PLATE SUB-ASSEMBLY
SCALE 1:2

PARTS LIST		
ITEM	QTY	PART NUMBER
2	1	JAW SUB-ASSEMBLY
2.1	1	SLIDING JAW
2.3	2	SLIDE KEY
2.4	2	SET SCREW
3	1	SCREW SUB-ASSEMBLY
3.1	1	WISE SCREW
3.2	1	HANDLE ROD
3.3	1	SPECIAL KEY
3.4	2	HANDLE BALL
3.5	2	#000 TAPER PIN
3.6	1	COLLAR
4	2	JAW PLATE SUB-ASSEMBLY
4.1	1	JAW PLATE
4.2	2	1/4" FLATHEAD MACHINE SCREW

LEGEND:

- ° DEGREES
- ∅ DIAMETER
- R RADIUS
- COUNTERBORE
- ∇ DEPTH
- ∨ COUNTERSINK

GENERAL NOTES

FILLETS AND ROUNDS R.125 UNLESS OTHERWISE NOTED



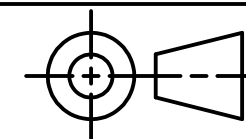
DIGITAL DESIGN
GRAPHICS
TECHNOLOGY

WWW.DDGT.NET



Sebastien Bolle

sebastien.a.bolle@gmail.com
www.ddgt.net/StudentPages/sbolle



TOLERANCES UNLESS SPECIFIED:
DECIMAL INCHES:
X = ±.020
XX = ±.010
XXX = ±.005
FRACTIONAL ±1/64"
ANGLES ±1 DEGREE

SURFACES 32 ✓

COURSE: DDGT240

INVENTOR DRAWING NAME:
MACHINE VISE

FIG#: 14-71

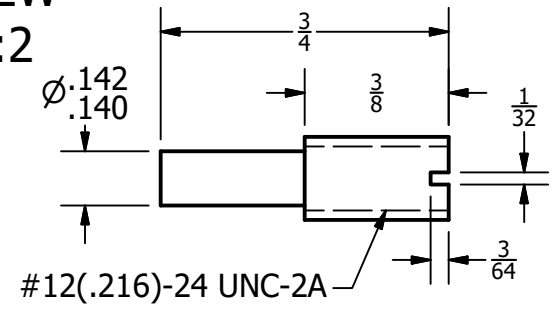
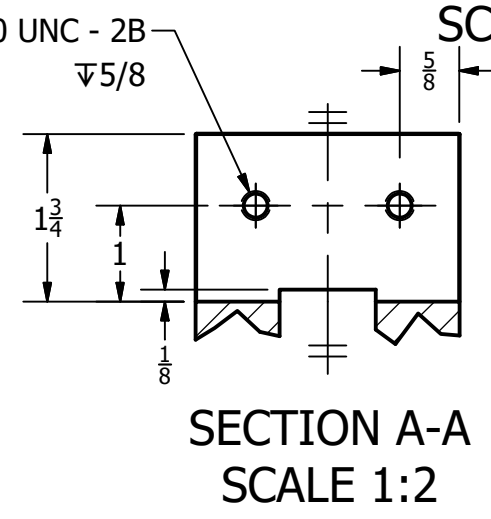
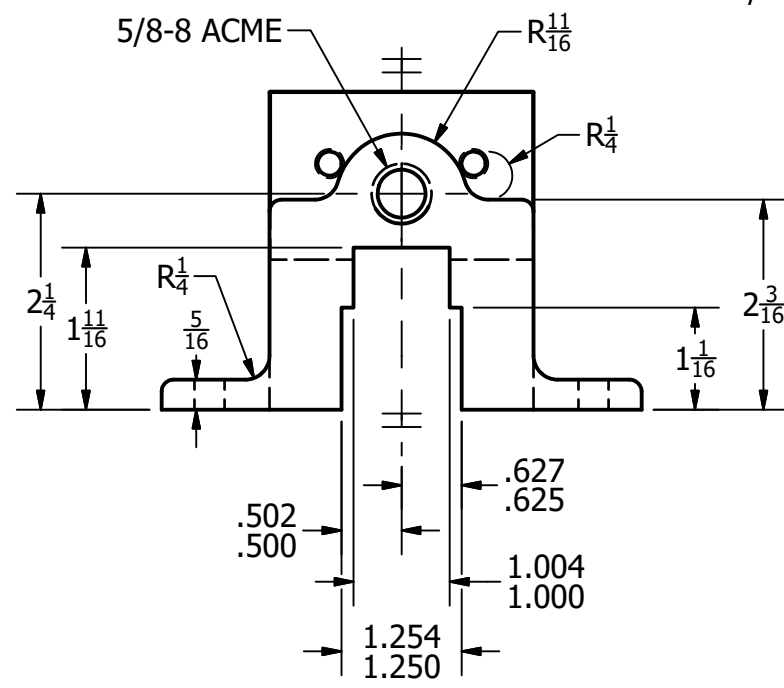
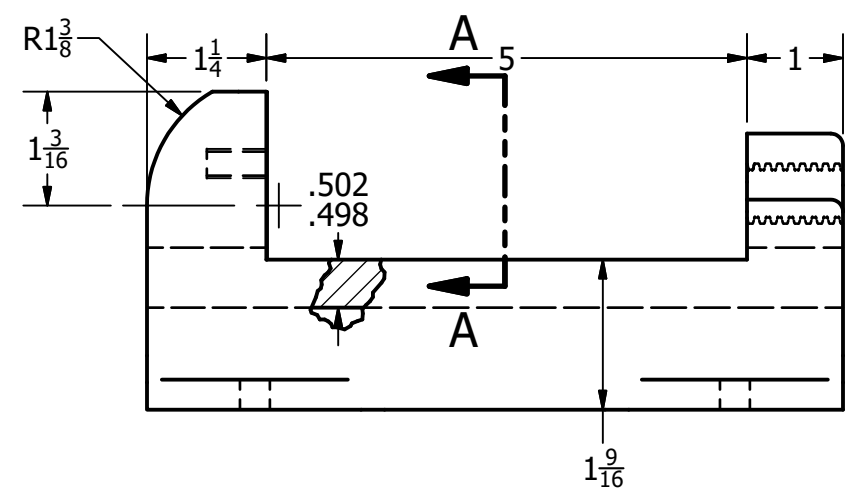
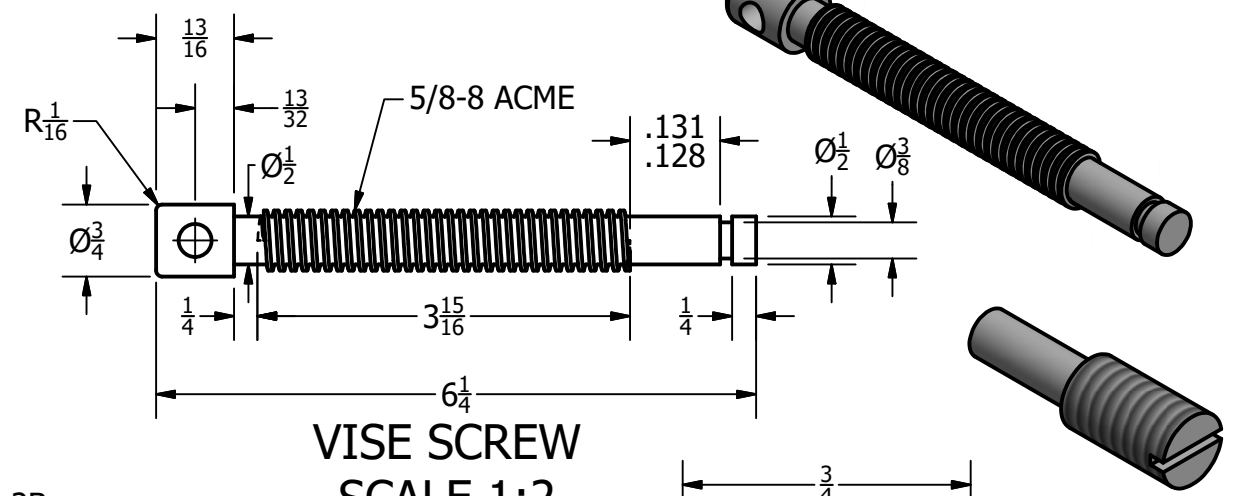
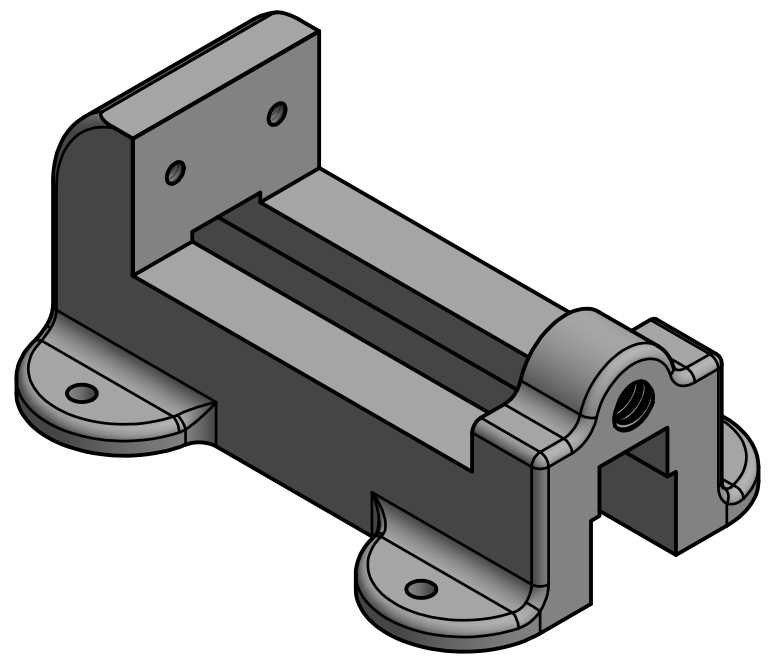
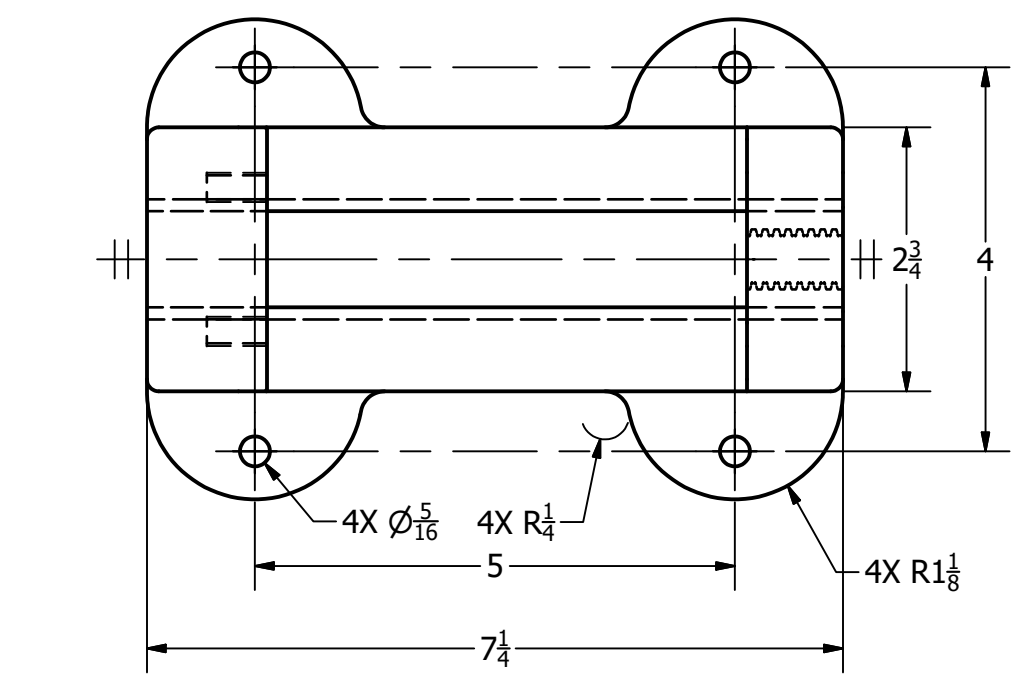
DRAFTER: S. BOLLE

DATE: 8/16/2017

SCALE: AS NOTED

PAGE #: 2 OF 4

PARTS LIST		
ITEM	QTY	PART NUMBER
1	1	BASE
2.4	2	SET SCREW
3.1	1	WISE SCREW



BASE
SCALE 1:2

WISE SCREW
SCALE 1:2

SECTION A-A
SCALE 1:2

SET SCREW
SCALE 2:1

LEGEND:

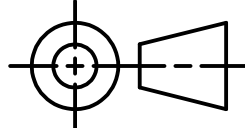
- ° DEGREES
- Ø DIAMETER
- R RADIUS
- COUNTERBORE
- ∇ DEPTH
- ✓ COUNTERSINK

GENERAL NOTES

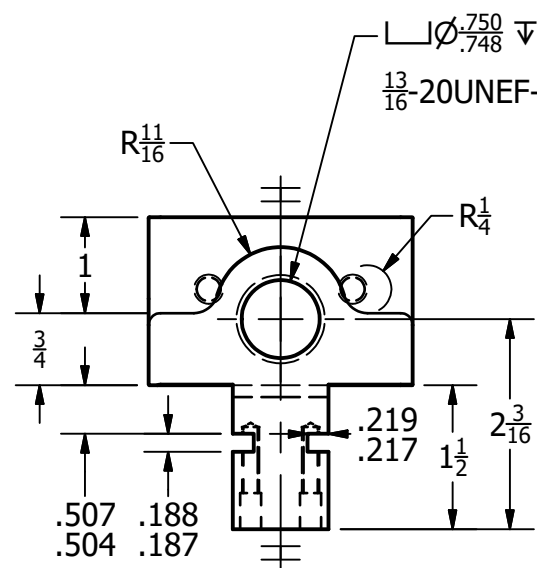
FILLETS AND ROUNDS R.125 UNLESS OTHERWISE NOTED

DDGT
DIGITAL DESIGN
GRAPHICS
TECHNOLOGY
WWW.DDGT.NET

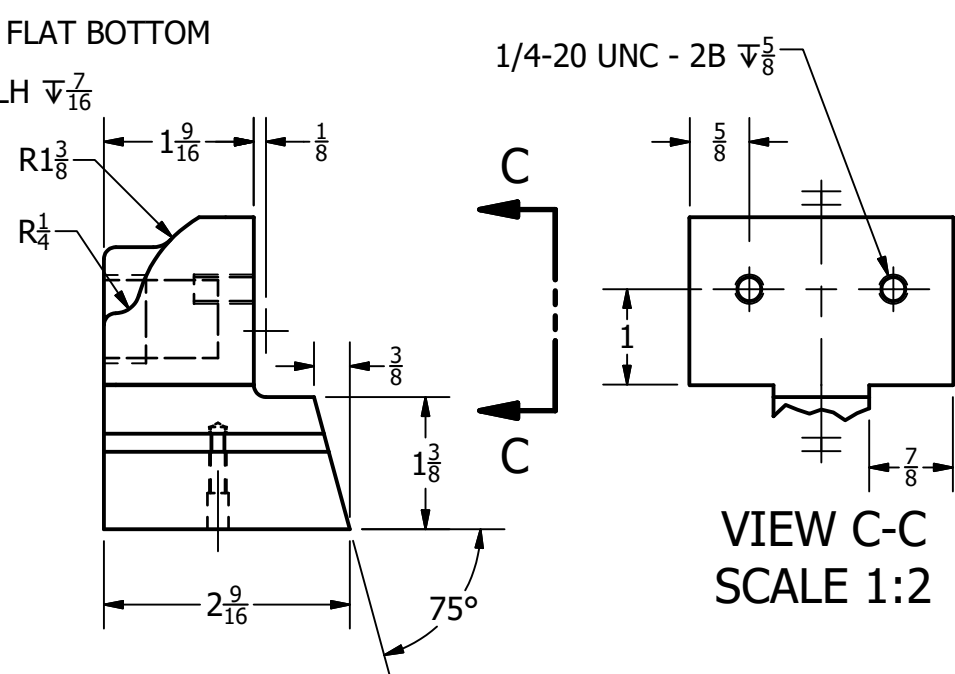

Sebastien Bolle
sebastien.a.bolle@gmail.com
www.ddgt.net/StudentPages/sbolle


TOLERANCES UNLESS SPECIFIED:
DECIMAL INCHES:
X = ±.020
XX = ±.010
XXX = ±.005
FRACTIONAL ±1/64"
ANGLES ±1 DEGREE
SURFACES 32 ✓

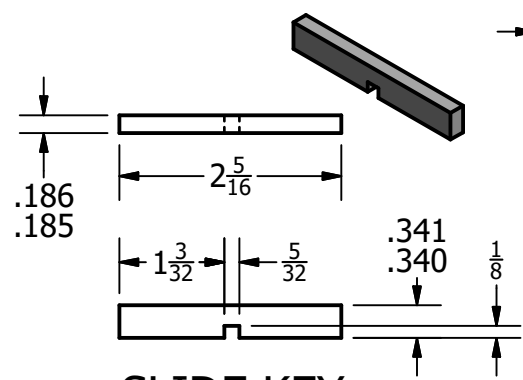
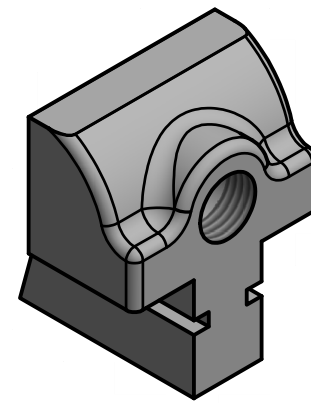
COURSE:	DDGT240
INVENTOR DRAWING NAME:	MACHINE VISE
FIG#:	14-71
DRAFTER:	S. BOLLE
DATE:	8/16/2017
SCALE:	AS NOTED
PAGE #:	3 OF 4



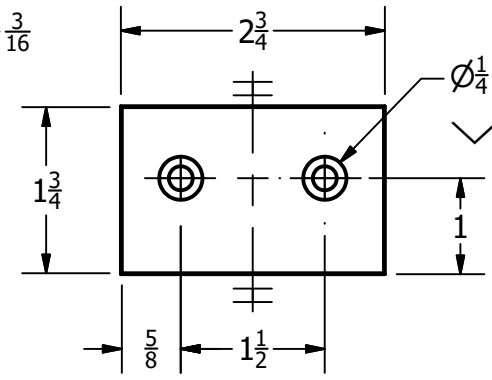
SLIDING JAW
SCALE 1:2



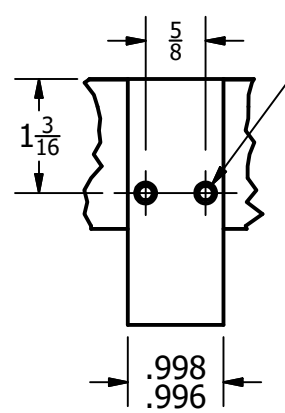
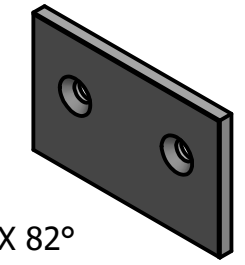
VIEW C-C
SCALE 1:2



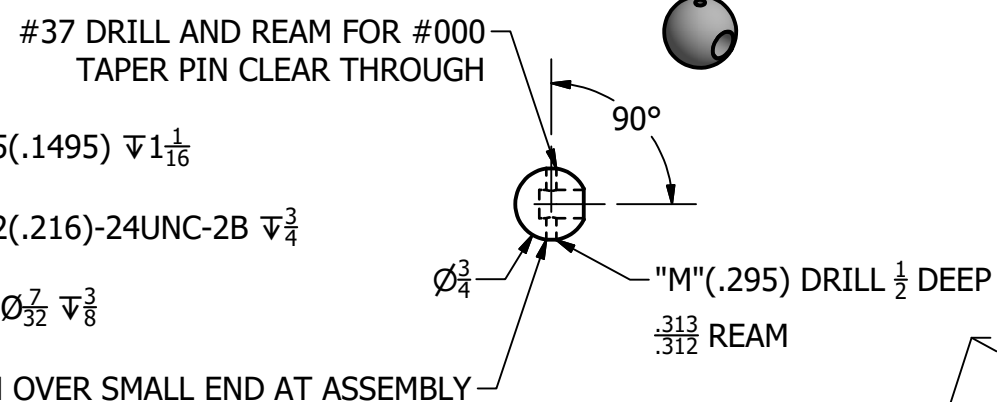
SLIDE KEY
SCALE 1:2



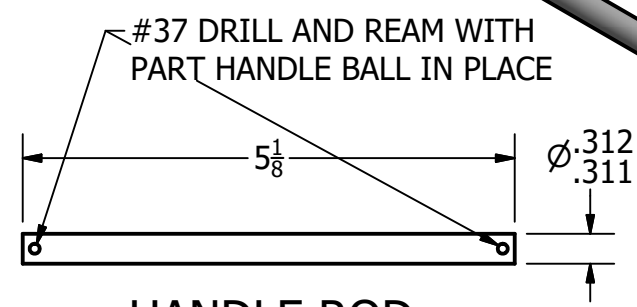
JAW PLATE
SCALE 1:2



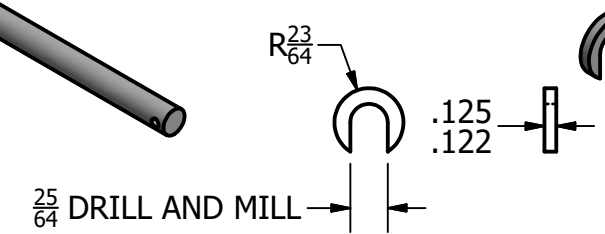
VIEW B-B
SCALE 1:2



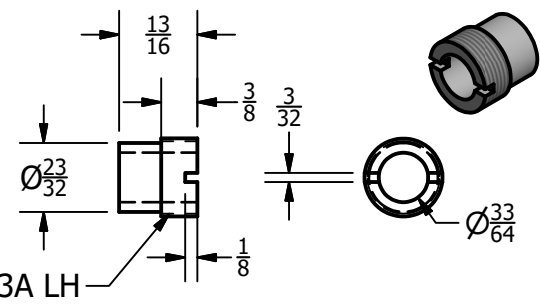
HANDLE BALL
SCALE 1:2



HANDLE ROD
SCALE 1:2



SPECIAL KEY
SCALE 1:2



COLLAR
SCALE 1:2

PARTS LIST		
ITEM	QTY	PART NUMBER
2.1	1	SLIDING JAW
2.3	2	SLIDE KEY
3.2	1	HANDLE ROD
3.3	1	SPECIAL KEY
3.4	2	HANDLE BALL
3.6	1	COLLAR
4.1	2	JAW PLATE

LEGEND:

- ° DEGREES
- Ø DIAMETER
- R RADIUS
- COUNTERBORE
- ∇ DEPTH
- ∨ COUNTERSINK

GENERAL NOTES

FILLETS AND ROUNDS R.125 UNLESS OTHERWISE NOTED

DDGT
DIGITAL DESIGN
GRAPHICS
TECHNOLOGY
WWW.DDGT.NET

Sebastien Bolle
sebastien.a.bolle@gmail.com
www.ddgt.net/StudentPages/sbolle

TOLERANCES UNLESS SPECIFIED:
DECIMAL INCHES:
X = ±.020
XX = ±.010
XXX = ±.005
FRACTIONAL ±1/64"
ANGLES ±1 DEGREE

SURFACES 32 ✓

COURSE:	DDGT240
INVENTOR DRAWING NAME:	MACHINE VISE
FIG#:	14-71
DRAFTER:	S. BOLLE
DATE:	8/16/2017
SCALE:	AS NOTED
PAGE #:	4 OF 4