

METRIC

**TROLLEY
SCALE 1 / 2**

PARTS LIST

ITEM	QTY	PART NUMBER	MATERIAL	DESCRIPTION
1	2	SIDE PLATE SUB ASSEMBLY		SUB-ASSEMBLY
1.1	2	SIDE PLATE	MILD STEEL	
1.2	2	GUIDE	CAST IRON	
1.3	4	RIVET	STANDARD	BUTTON HEAD,Ø10 X 60LG
2	1	HOOK	MILD STEEL	
3	4	WHEEL	CAST IRON	
4	1	AXLE	COLD ROLLED STEEL	
5	4	WHEEL AXLE	COLD ROLLED STEEL	
6	44	ROLLER BEARING	COLD ROLLED STEEL	
7	6	COTTER PIN	STANDARD	Ø6 X 40LG
8	4	LOCKNUT	STANDARD	M16 X 2 (PREVALING TORQUE INSERT-TYPE)
9	8	ADJUSTING WASHER	STANDARD	Ø26ID X Ø44OD 4THK
10	4	WASHER	STANDARD	Ø26ID X Ø65OD X 3THK

GENERAL NOTES:

TROLLEY ASSEMBLY TO BE MOUNTED TO S200 X 34 BEAM

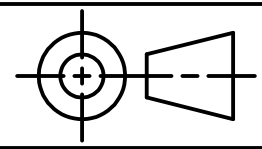
LEGEND:

- Ø DIAMETER
- R RADIUS
- ° DEGREES



DIGITAL DESIGN
GRAPHICS
TECHNOLOGY

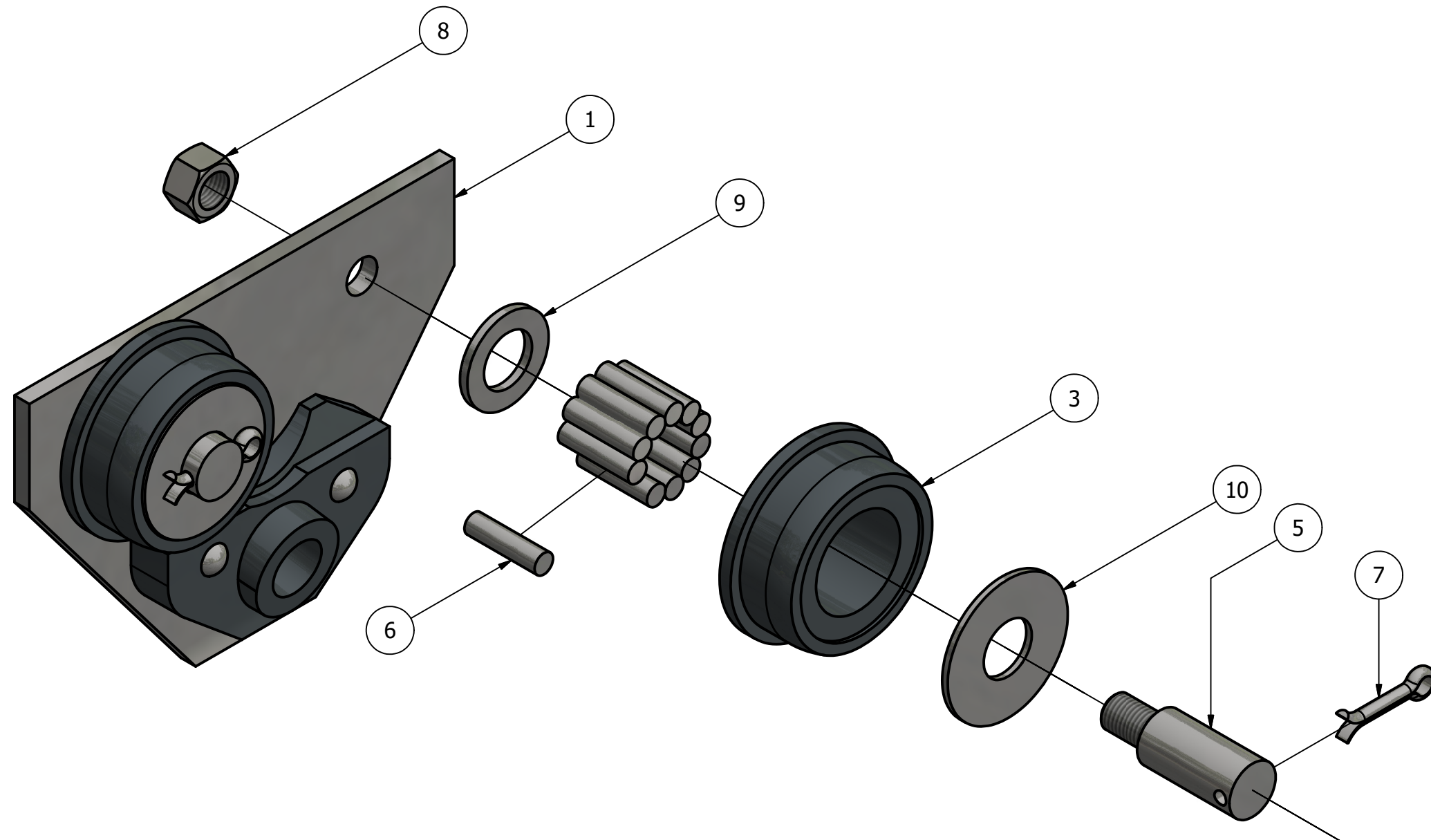
WWW.DDGT.NET



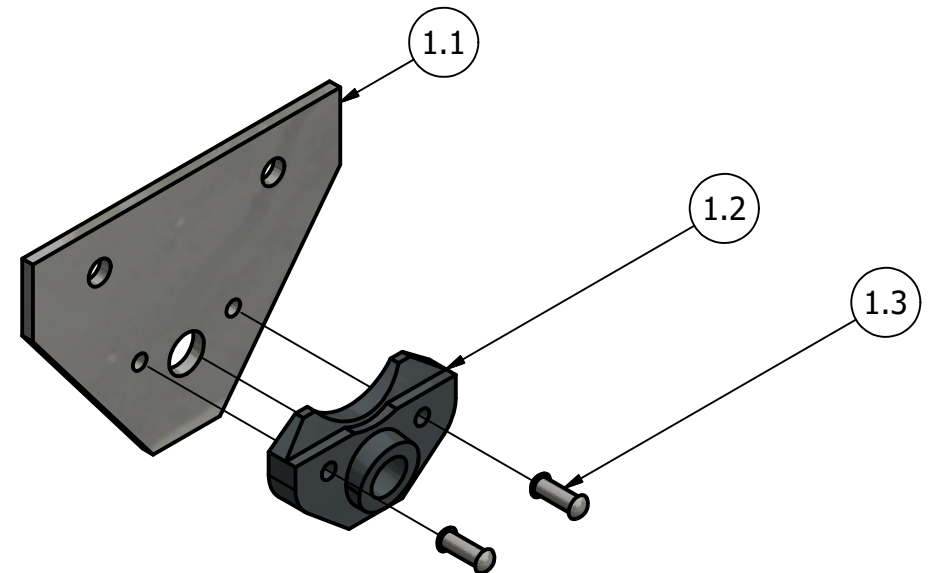
TOLERANCES UNLESS SPECIFIED:
MILLIMETERS:
WHOLE NUMBER = ±.5
X = .25
XX = .12

ANGLES ±1 DEGREE
SURFACES $\sqrt{32}$

COURSE:	DDGT120
INVENTOR DRAWING NAME:	TROLLEY
FIG #:	14-83
DRAFTER:	S.NAYERI
DATE:	12/7/2017
SCALE:	AS NOTED
PAGE #:	1 OF 6



SIDE PLATED EXPLODED ASSEMBLY
SCALE 1 / 2



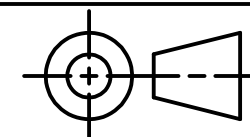
SIDE PLATE EXPLODED SUB-ASSEMBLY
SCALE 1 / 4

PARTS LIST		
ITEM	QTY	PART NUMBER
1	2	SIDE PLATE SUB ASSEMBLY
1.1	2	SIDE PLATE
1.2	2	GUIDE
1.3	4	RIVET
2	1	HOOK
3	4	WHEEL
4	1	AXLE
5	4	WHEEL AXLE
6	44	ROLLER BEARING
7	6	COTTER PIN
8	4	LOCKNUT
9	8	ADJUSTING WASHER
10	4	WASHER

DDGT

DIGITAL DESIGN
GRAPHICS
TECHNOLOGY

WWW.DDGT.NET



TOLERANCES UNLESS SPECIFIED:
MILLIMETERS:
WHOLE NUMBER = ±.5
X = .25
XX = .12

ANGLES ±1 DEGREE

SURFACES \checkmark

COURSE: DDGT120

INVENTOR DRAWING NAME:
TROLLEY

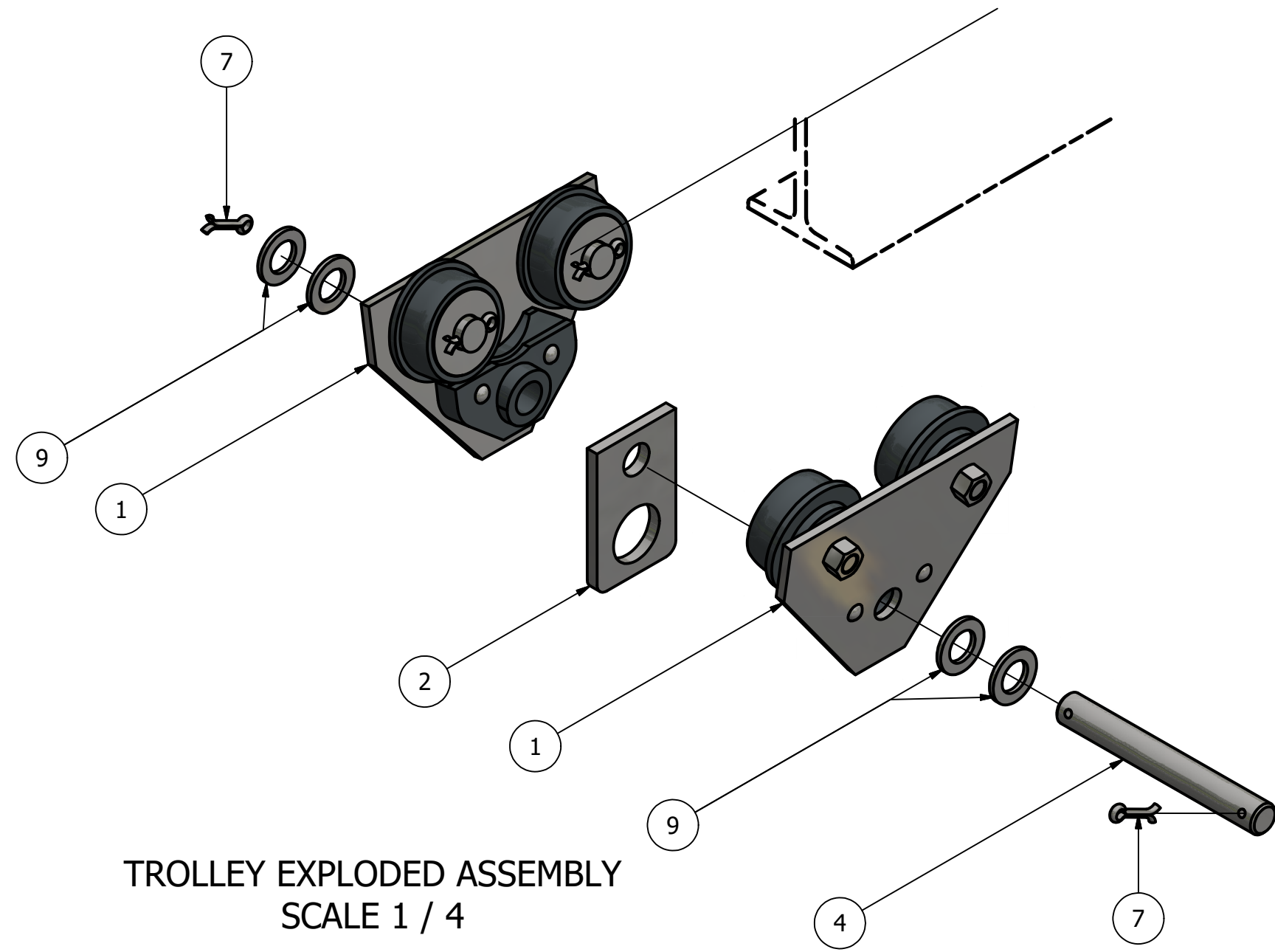
FIG #: 14-83

DRAFTER: S.NAYERI

DATE: 12/7/2017

SCALE: AS NOTED

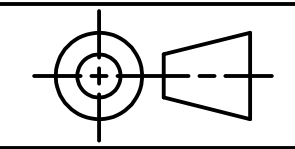
PAGE #: 2 OF 6



TROLLEY EXPLODED ASSEMBLY
SCALE 1 / 4

PARTS LIST		
ITEM	QTY	PART NUMBER
1	2	SIDE PLATE SUB ASSEMBLY
1.1	2	SIDE PLATE
1.2	2	GUIDE
1.3	4	RIVET
2	1	HOOK
3	4	WHEEL
4	1	AXLE
5	4	WHEEL AXLE
6	44	ROLLER BEARING
7	6	COTTER PIN
8	4	LOCKNUT
9	8	ADJUSTING WASHER
10	4	WASHER

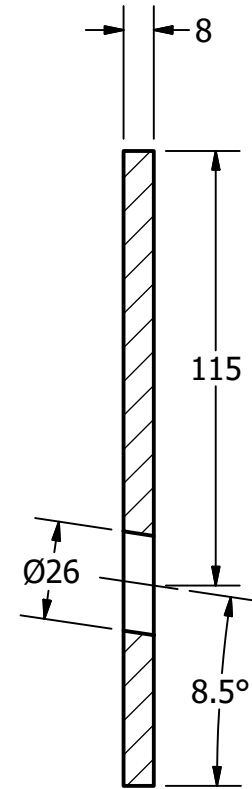
DDGT
 DIGITAL DESIGN
 GRAPHICS
 TECHNOLOGY
 WWW.DDGT.NET



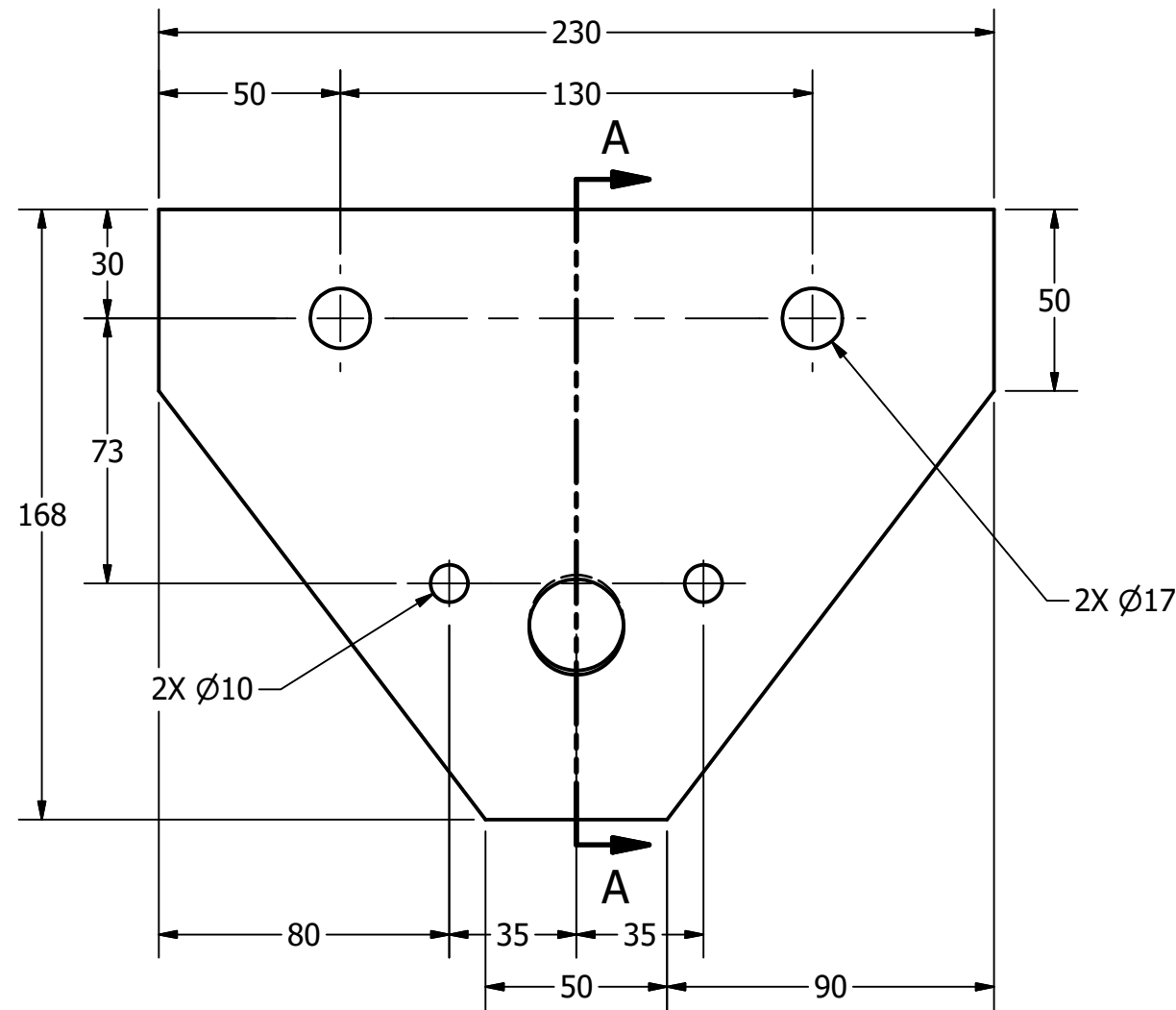
TOLERANCES UNLESS SPECIFIED:
 MILLIMETERS:
 WHOLE NUMBER = ±.5
 X = .25
 XX = .12
 ANGLES ±1 DEGREE
 SURFACES 32 ✓

COURSE:	DDGT120
INVENTOR DRAWING NAME:	TROLLEY
FIG #:	14-83
DRAFTER:	S.NAYERI
DATE:	12/7/2017
SCALE:	AS NOTED
PAGE #:	3 OF 6

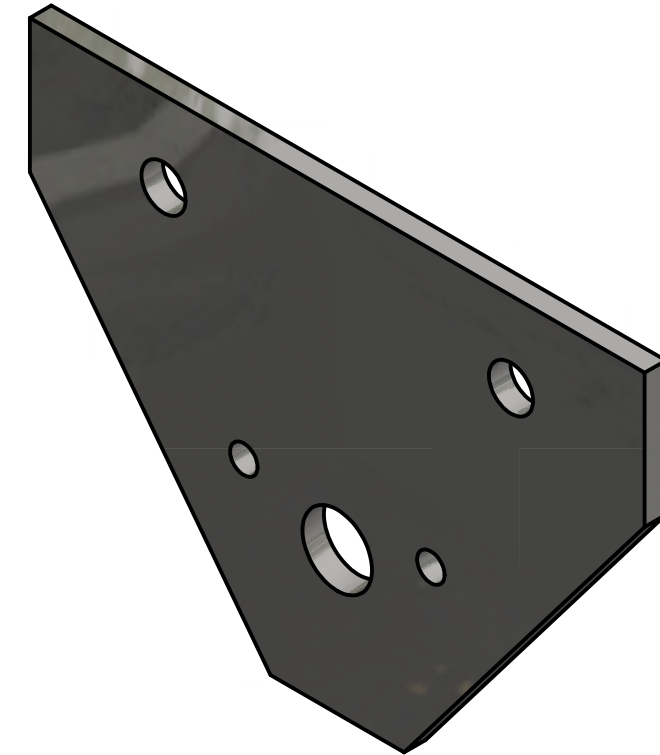
PARTS LIST		
ITEM	QTY	PART NUMBER
1.1	4	SIDE PLATE



SECTION A-A
SCALE 1 / 2



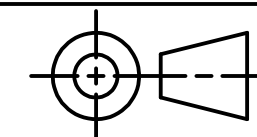
SIDE PLATE
SCALE 1 / 2



DDGT

DIGITAL DESIGN
GRAPHICS
TECHNOLOGY

WWW.DDGT.NET



TOLERANCES UNLESS SPECIFIED:
MILLIMETERS:
WHOLE NUMBER = ±.5
X = .25
XX = .12

ANGLES ±1 DEGREE

SURFACES 32 ✓

COURSE: DDGT120

INVENTOR DRAWING NAME:
TROLLEY

FIG #: 14-83

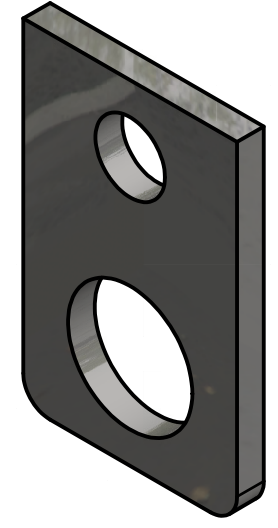
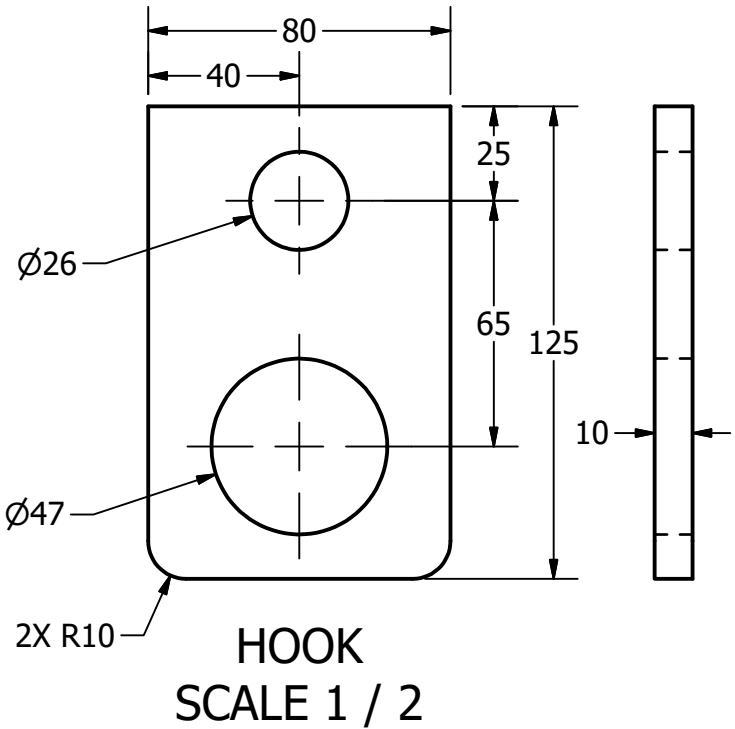
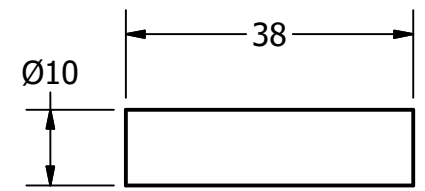
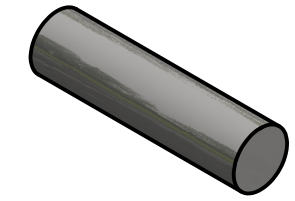
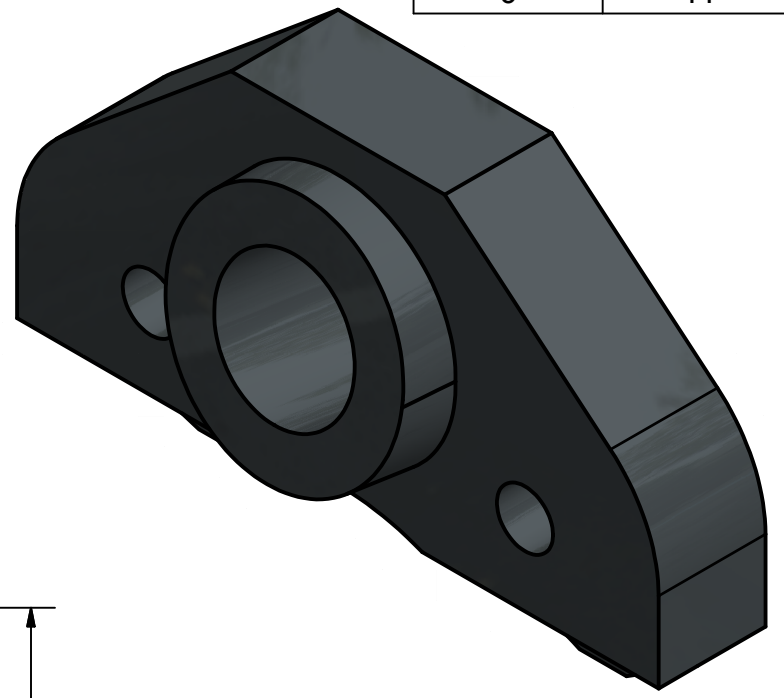
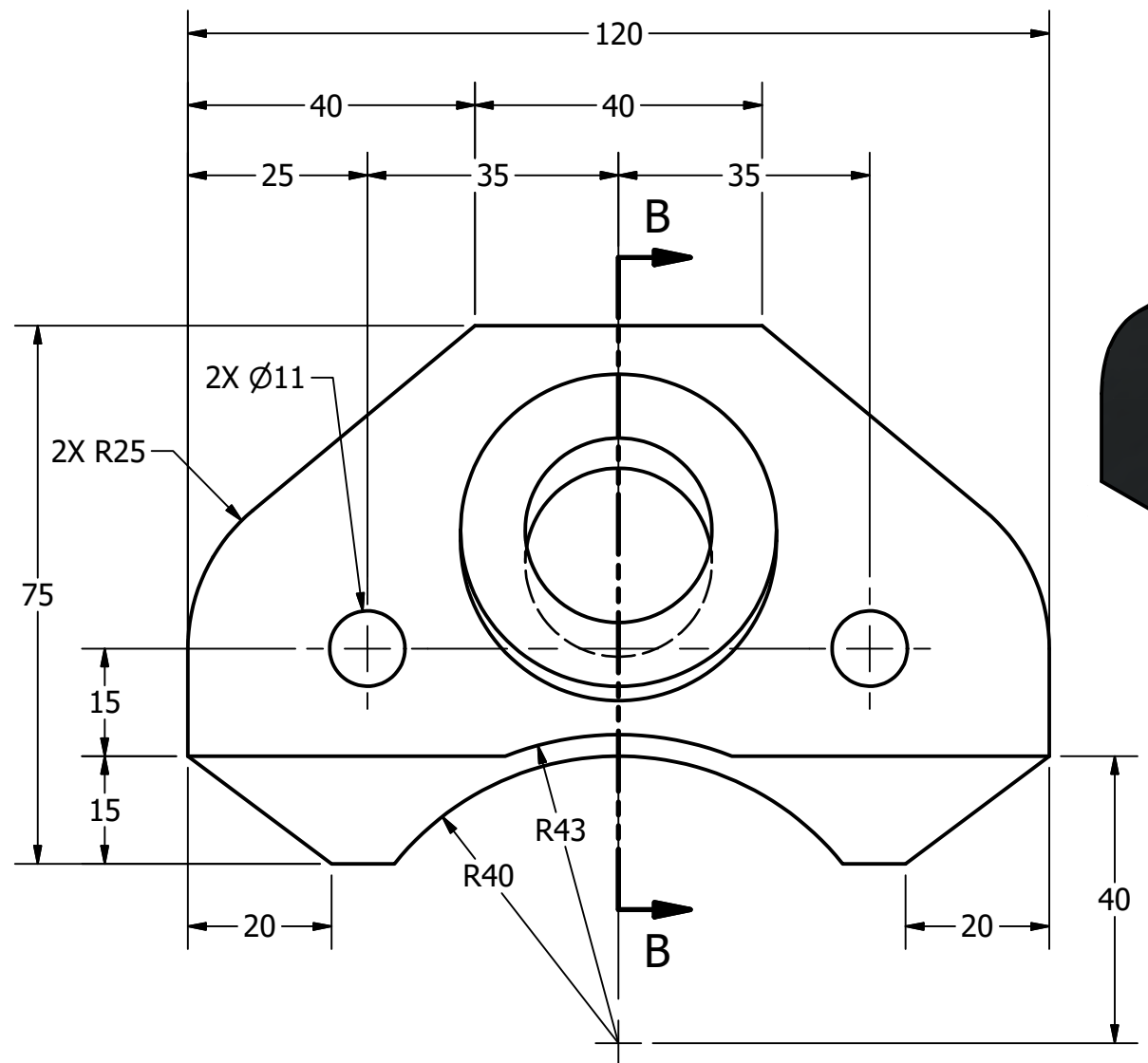
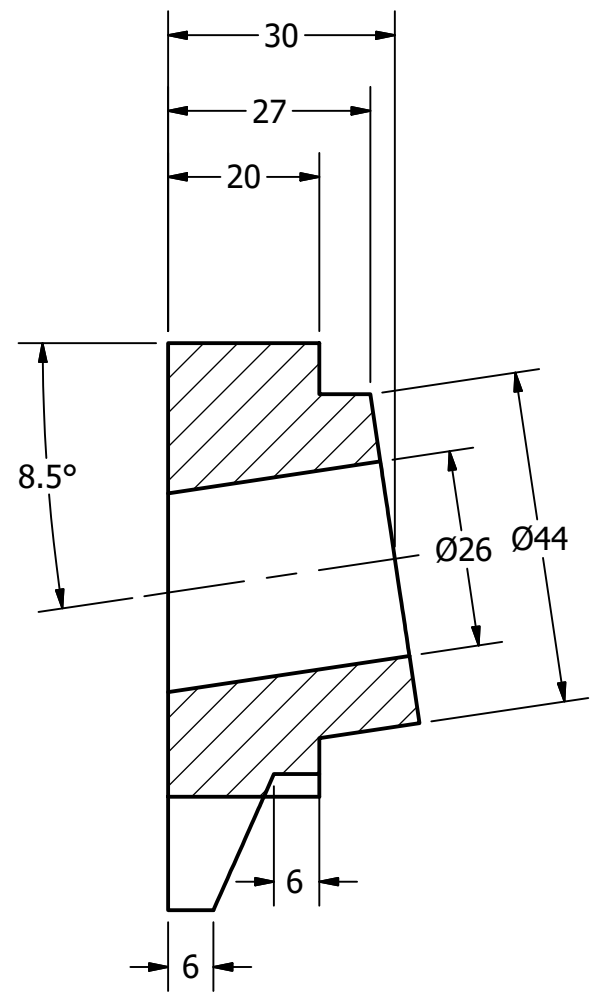
DRAFTER: S.NAYERI

DATE: 12/7/2017

SCALE: AS NOTED

PAGE #: 4 OF 6

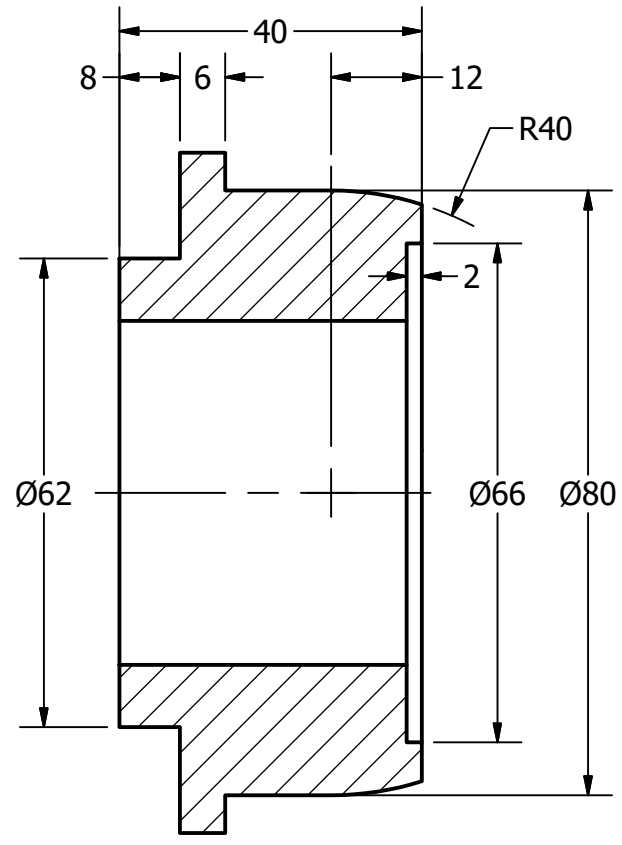
PARTS LIST		
ITEM	QTY	PART NUMBER
1.2	4	GUIDE
2	1	HOOK
6	44	ROLLER BEARING



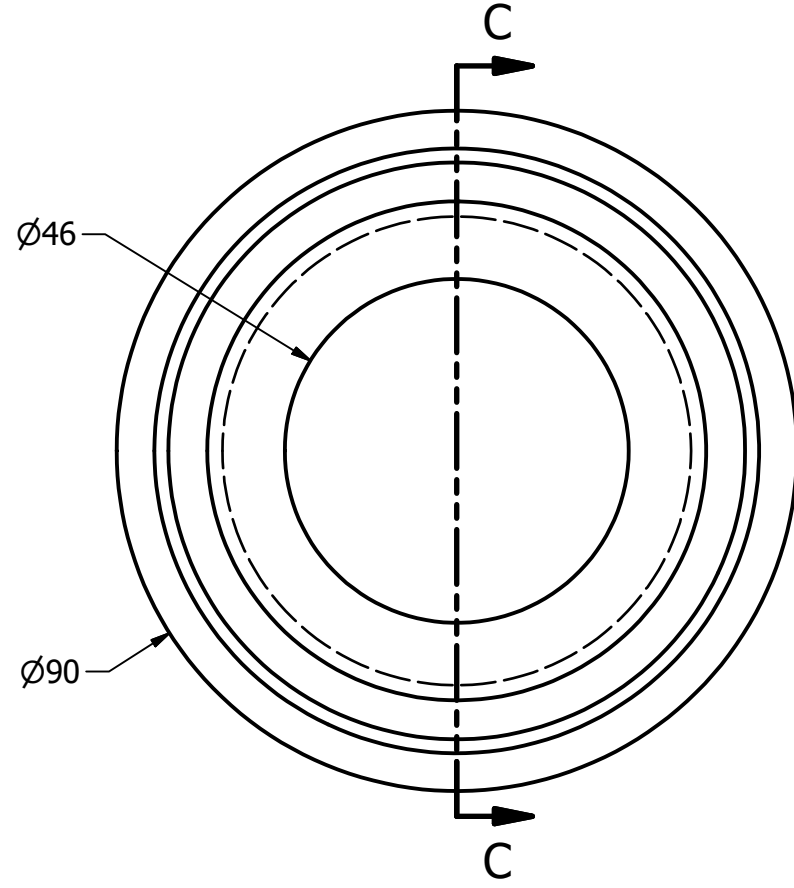
DDGT
DIGITAL DESIGN
GRAPHICS
TECHNOLOGY
WWW.DDGT.NET

TOLERANCES UNLESS SPECIFIED:
MILLIMETERS:
WHOLE NUMBER = ±.5
X = .25
XX = .12
ANGLES ±1 DEGREE
SURFACES $\sqrt{32}$

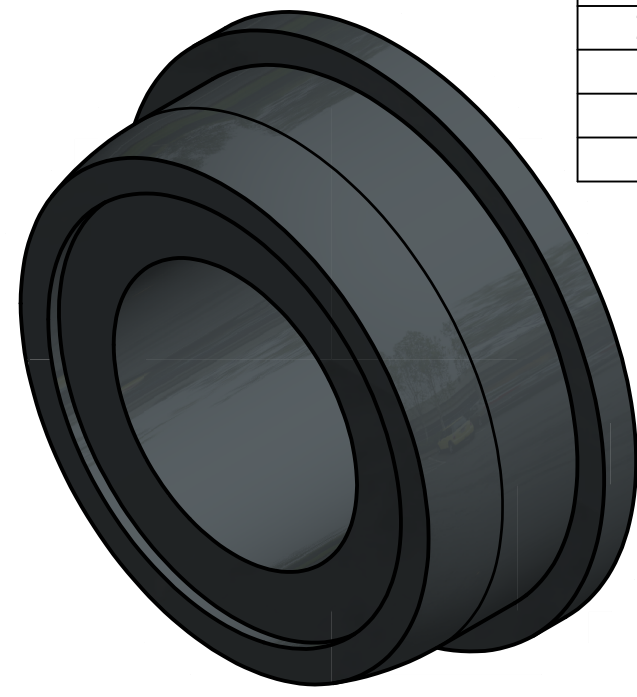
COURSE:	DDGT120
INVENTOR DRAWING NAME:	TROLLEY
FIG #:	14-83
DRAFTER:	S.NAYERI
DATE:	12/7/2017
SCALE:	AS NOTED
PAGE #:	5 OF 6



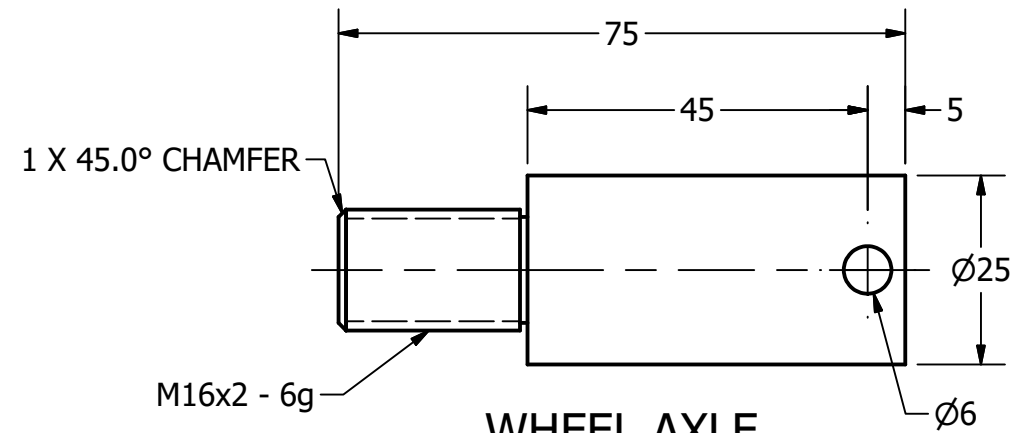
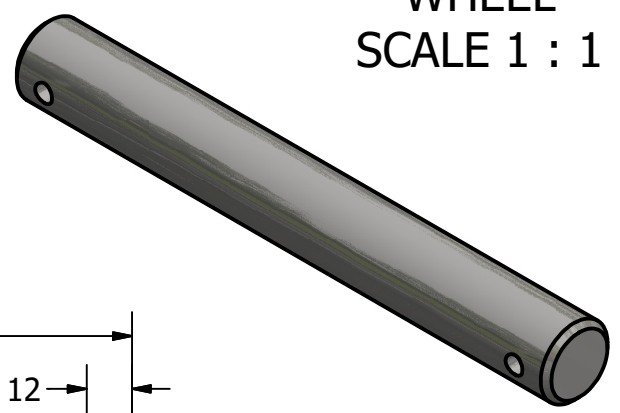
SECTION C-C
SCALE 1 : 1



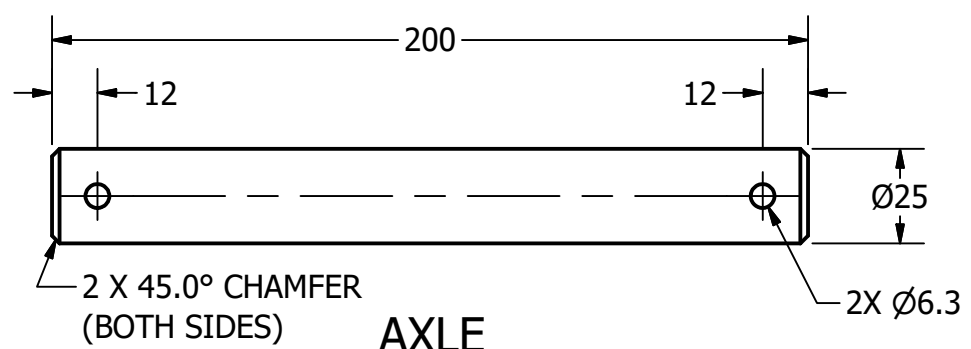
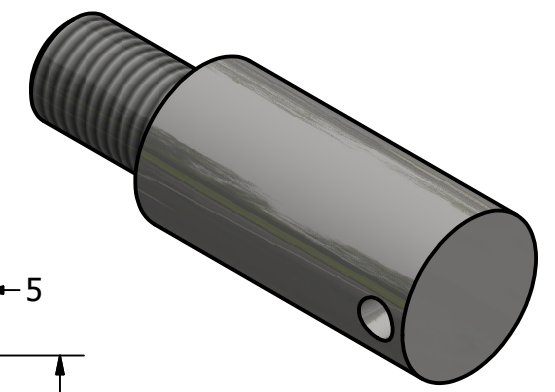
WHEEL
SCALE 1 : 1



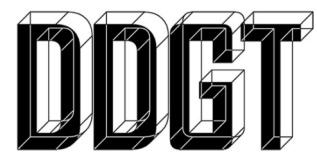
PARTS LIST		
ITEM	QTY	PART NUMBER
3	4	WHEEL
4	1	AXLE
5	4	WHEEL AXLE



WHEEL AXLE
SCALE 1 : 1

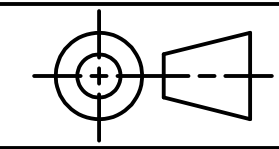


AXLE
SCALE 1 / 2



DIGITAL DESIGN
GRAPHICS
TECHNOLOGY

WWW.DDGT.NET



TOLERANCES UNLESS SPECIFIED:
MILLIMETERS:
WHOLE NUMBER = ±.5
X = .25
XX = .12
ANGLES ±1 DEGREE
SURFACES 32 ✓

COURSE:	DDGT120
INVENTOR DRAWING NAME:	TROLLEY
FIG #:	14-83
DRAFTER:	S.NAYERI
DATE:	12/7/2017
SCALE:	AS NOTED
PAGE #:	6 OF 6