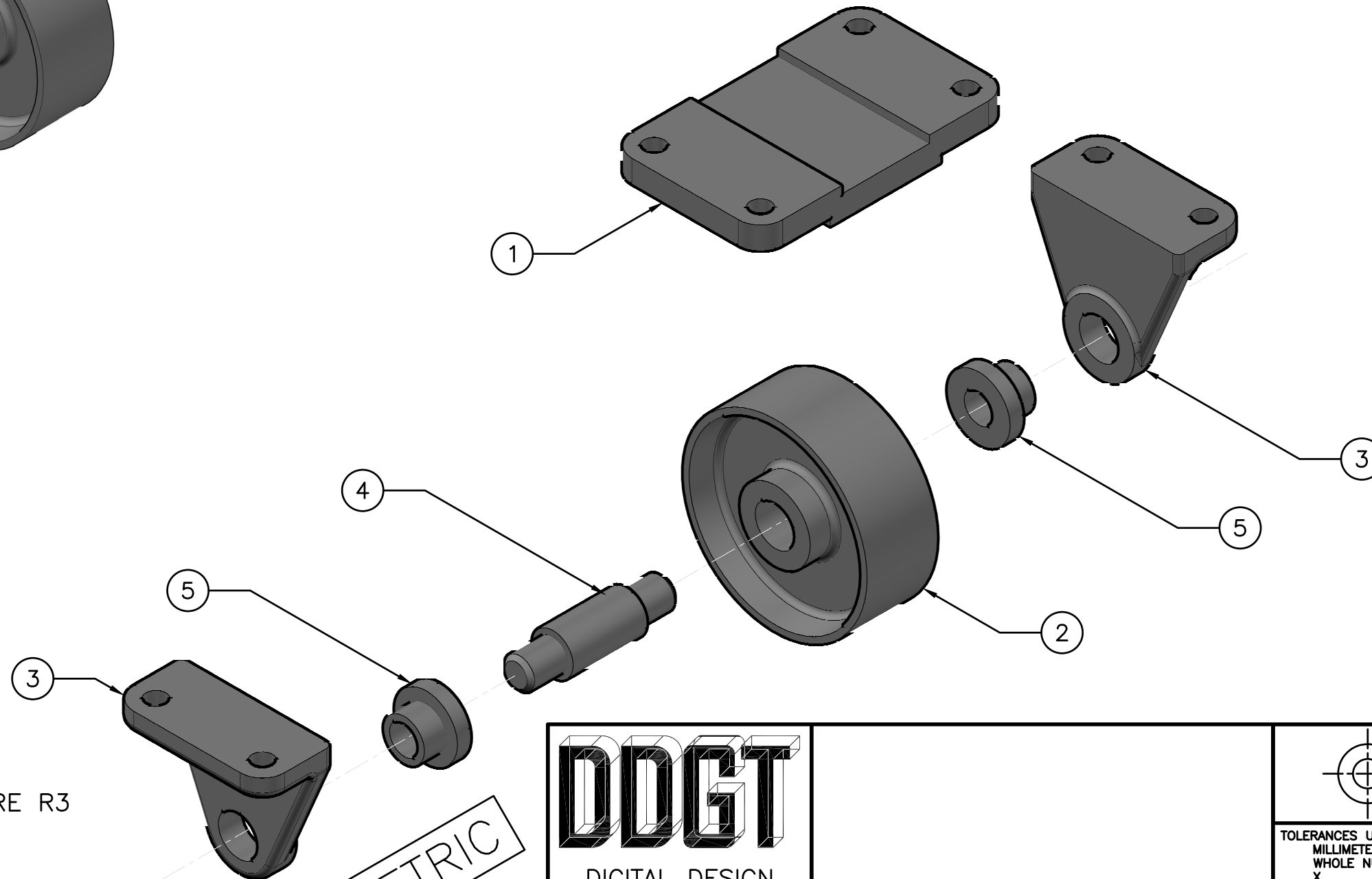


PARTS LIST

ITEM	QTY.	PART NAME	MATERIAL
1	1	TOP PLATE	MALLEABLE IRON
2	1	WHEEL	MALLEABLE IRON
3	2	AXLE SUPPORT	MALLEABLE IRON
4	1	AXLE	SAE 1020
5	2	BUSHING	BRONZE

FIT	BETWEEN PARTS
H8/f7	4 AND 5
H7/p6	3 AND 5
H8/f7	2 AND 4



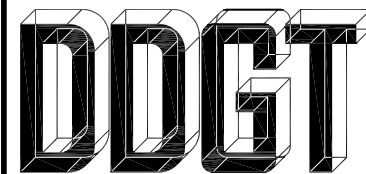
LEGEND:

- ° DEGREES
- ∅ DIAMETER
- R RADIUS
- SPOT FACE

GENERAL NOTES:

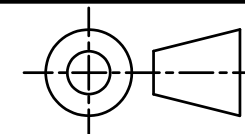
ROUND AND FILLETS ARE R3

METRIC



DIGITAL DESIGN
GRAPHICS
TECHNOLOGY

WWW.DDGT.NET



TOLERANCES UNLESS SPECIFIED:

MILLIMETERS:
WHOLE NUMBER = ±0.5
X = ±0.25
XX = ±0.12

ANGLES ±1 DEGREE

SURFACES 32/√

COURSE: DDGT120

AUTOCAD DRAWING NAME:

CASTER

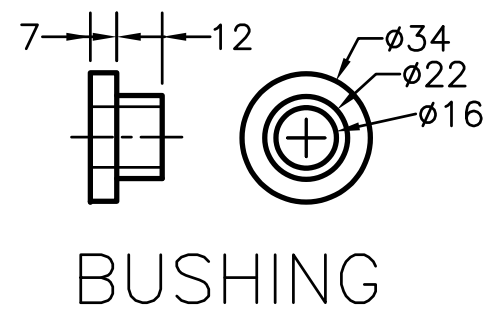
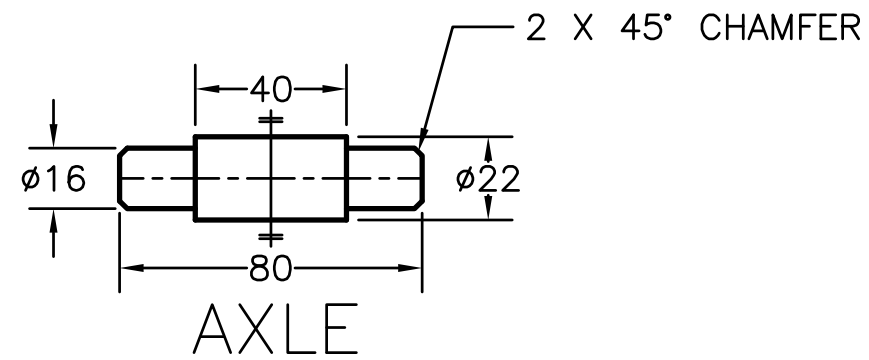
FIG#: 9-51

DRAFTER: S. NAYERI

DATE: 11/9/2017

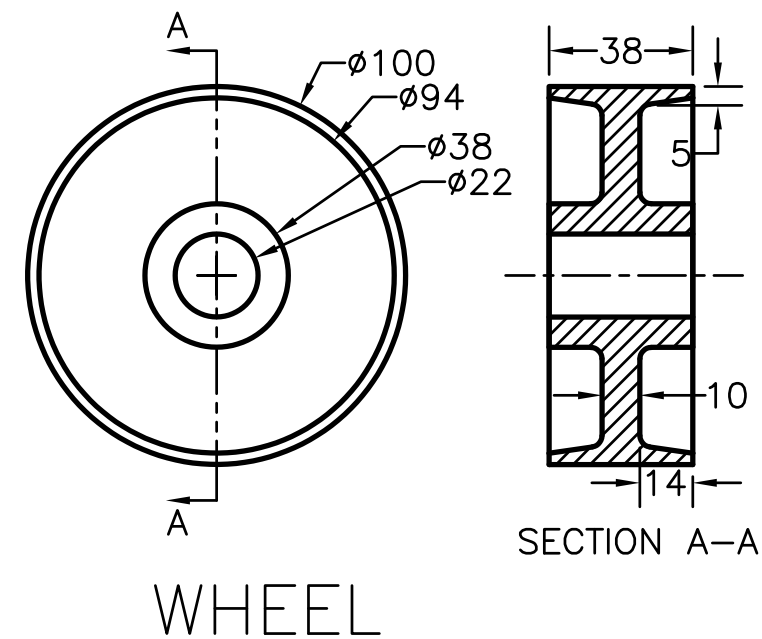
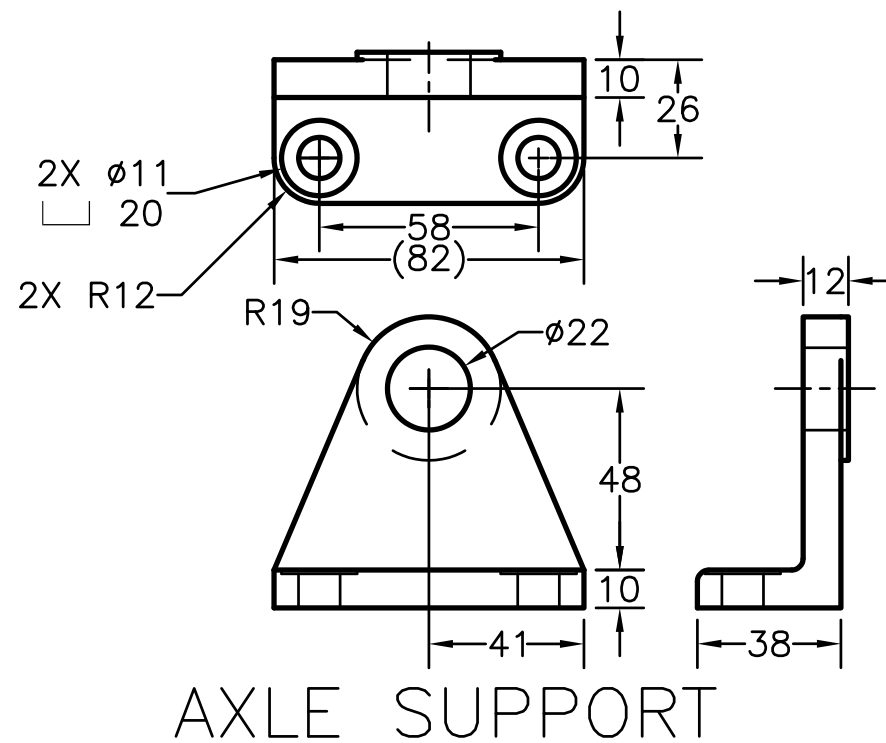
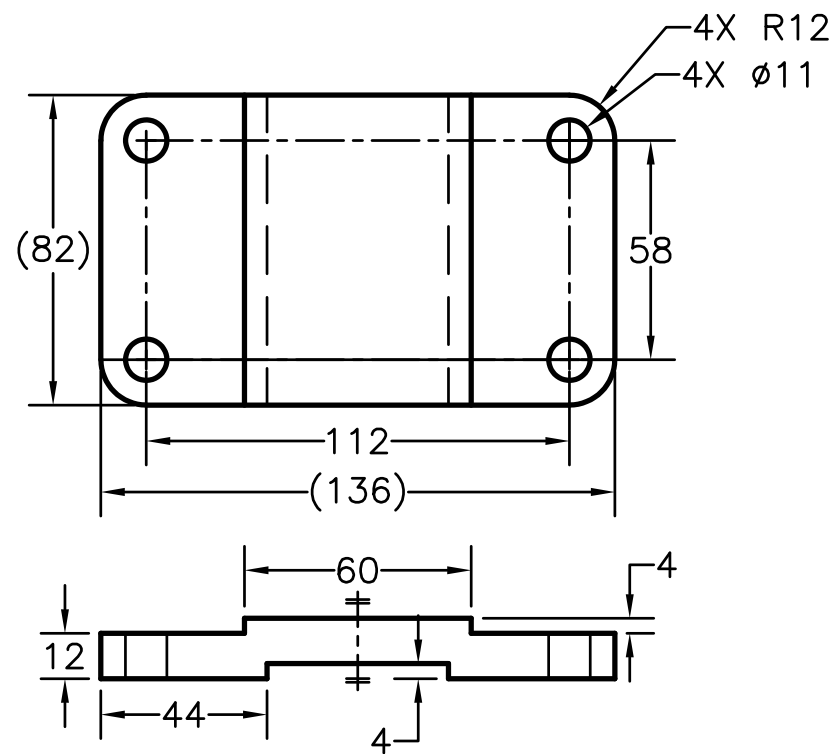
SCALE: 1:2

PAGE #: 1 OF 2



PARTS LIST		
ITEM	QTY.	PART NAME
1	1	TOP PLATE
2	1	WHEEL
3	2	AXLE SUPPORT
4	1	AXLE
5	2	BUSHING

FIT	BETWEEN PARTS
H8/f7	4 AND 5
H7/p6	3 AND 5
H8/f7	2 AND 4

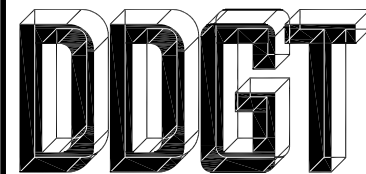


LEGEND:
 ° DEGREES
 ϕ DIAMETER
 R RADIUS
 □ SPOT FACE

GENERAL NOTES:

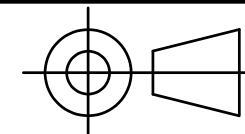
ROUND AND FILLETS ARE R3

METRIC



DIGITAL DESIGN
 GRAPHICS
 TECHNOLOGY

WWW.DDGT.NET



TOLERANCES UNLESS SPECIFIED:
 MILLIMETERS:
 WHOLE NUMBER = ± 0.5
 X = ± 0.25
 XX = ± 0.12
 ANGLES ± 1 DEGREE
 SURFACES $\sqrt{32}$

COURSE: DDGT120

AUTOCAD DRAWING NAME:

CASTER

FIG#: 9-51

DRAFTER: S. NAYERI

DATE: 11/9/2017

SCALE: 1:2

PAGE #: 2 OF 2