

# LEGEND:

- ∅ DIAMETER
- R RADIUS
- ° DEGREES
- | SPOTFACE

FIT	BETWEEN PARTS
H8/f7	4 AND 5
H7/p6	3 AND 5
H8/f7	2 AND 4

PARTS LIST			
ITEM	QTY.	PART NAME	MATERIAL
1	1	TOP PLATE	MALLEABLE IRON
2	1	WHEEL	MALLEABLE IRON
3	2	AXLE SUPPORT	MALLEABLE IRON
4	1	AXLE	SAE 1020
5	2	BUSHING	BRONZE

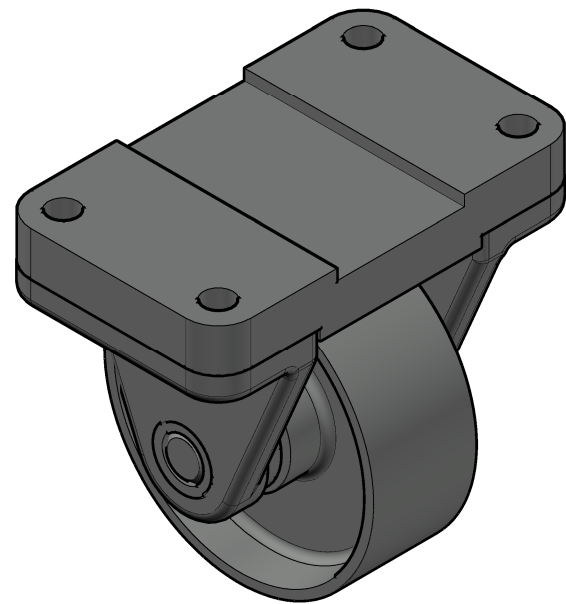


DIGITAL DESIGN  
GRAPHICS  
TECHNOLOGY

WWW.DDGT.NET

*Cosmic Curiosities*  
Space Themed Toys and Puzzles  
Sebastian Zepeda  
Phone: (707) 337-5558  
CosmicToysAndPuzzles@gmail.com  
http://ddgt.net/StudentPages/szepeda

METRIC

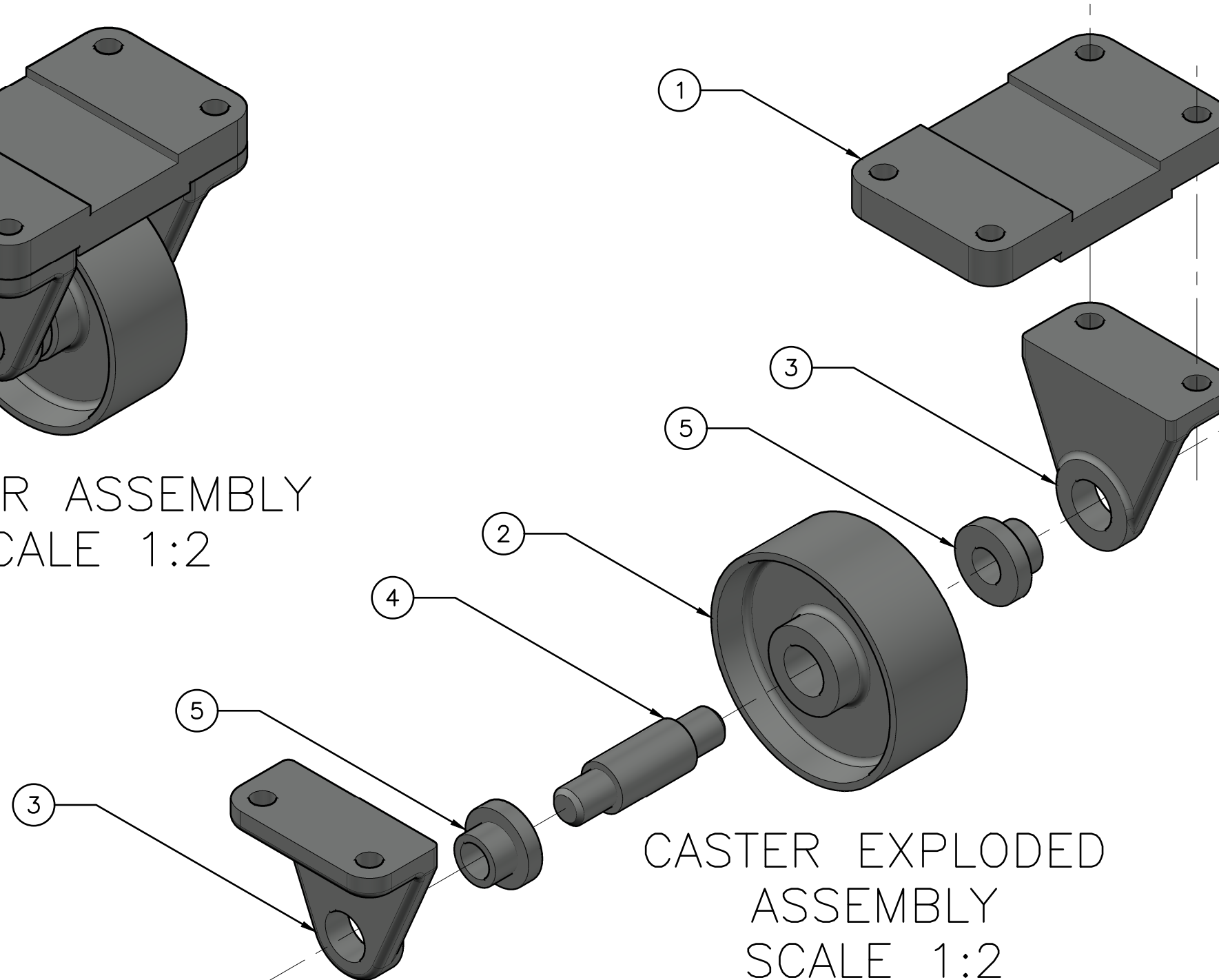


CASTER ASSEMBLY  
SCALE 1:2

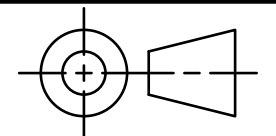
## GENERAL NOTES:

FASTEN ASSEMBLY TO A 6mm STEEL PLATE BY FOUR M10 40mm LONG HEX HEAD BOLTS, NUTS AND LOCK WASHERS.

ROUNDS AND FILLETS R3



CASTER EXPLODED  
ASSEMBLY  
SCALE 1:2



TOLERANCES UNLESS SPECIFIED:  
MILLIMETERS:  
WHOLE NUMBERS = ±.5  
X = ±.25  
XX = ±.12  
FRACTIONAL ±1/64"  
ANGLES ±1 DEGREE  
SURFACES 32/

CLASS: DDGT 120

ASSIGNMENT #: #60 & #63

AUTOCAD DRAWING NAME:

CASTER

FIG #: 9-51

MANAGER: G. STROMMEN

DRAFTER: S. ZEPEDA

DATE: 5/8/2023

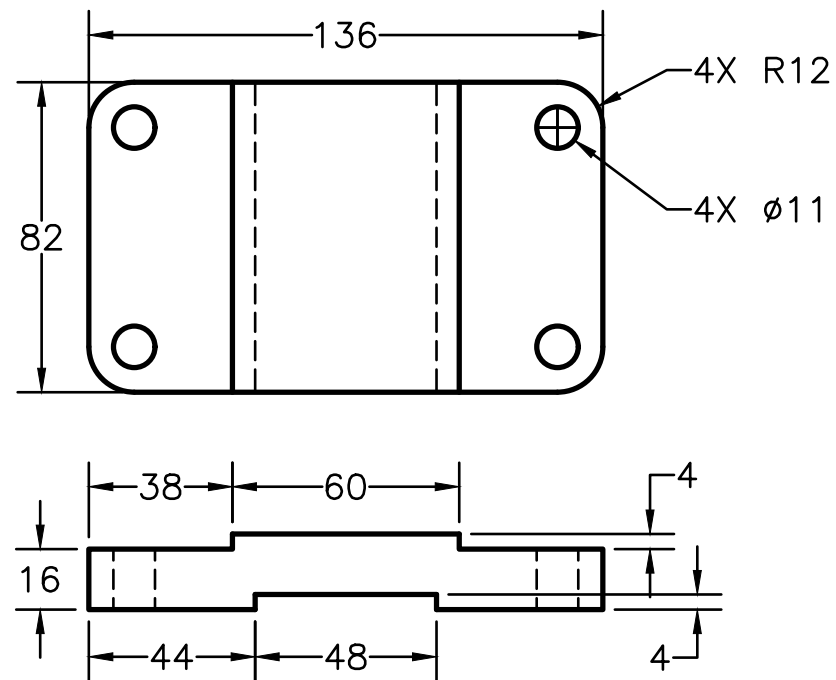
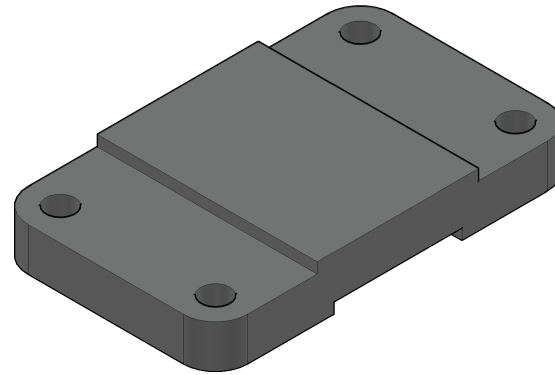
SCALE: AS NOTED

PAGE #: 1 OF 3

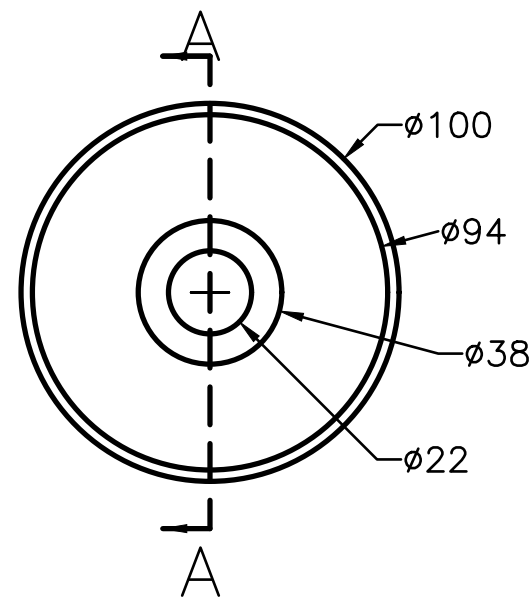
# GENERAL NOTES:

FASTEN ASSEMBLY TO A 6mm STEEL PLATE BY FOUR M10 40mm LONG HEX HEAD BOLTS, NUTS AND LOCK WASHERS.

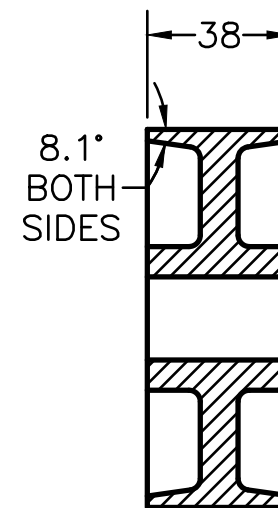
ROUNDS AND FILLETS R3



TOP PLATE  
SCALE 1:2



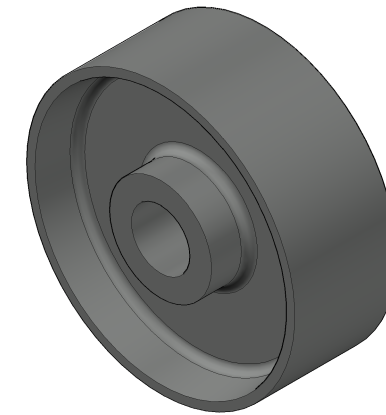
WHEEL  
SCALE 1:2



SECTION A-A

## PARTS LIST

ITEM	QTY.	PART NAME
1	1	TOP PLATE
2	1	WHEEL



## LEGEND:

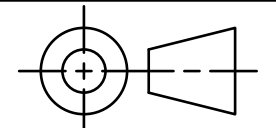
- Ø DIAMETER
- R RADIUS
- ° DEGREES
- || SPOTFACE



DIGITAL DESIGN  
GRAPHICS  
TECHNOLOGY

WWW.DDGT.NET

*Cosmic Curiosities*  
Space Themed Toys and Puzzles  
Sebastian Zepeda  
Phone: (707) 337-5558  
CosmicToysAndPuzzles@gmail.com  
http://ddgt.net/StudentPages/szepeda



TOLERANCES UNLESS SPECIFIED:  
MILLIMETERS:  
WHOLE NUMBERS = ±.5  
X = ±.25  
XX = ±.12  
FRACTIONAL ±1/64"  
ANGLES ±1 DEGREE  
SURFACES 32/

CLASS: DDGT 120

ASSIGNMENT #: #60 & #63

AUTOCAD DRAWING NAME:

CASTER

FIG #: 9-51

MANAGER: G. STROMMEN

DRAFTER: S. ZEPEDA

DATE: 5/8/2023

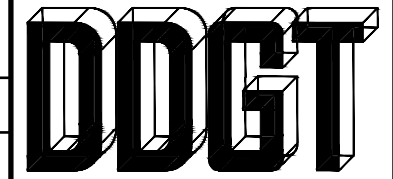
SCALE: AS NOTED

PAGE #: 2 OF 3

METRIC

# PARTS LIST

ITEM	QTY.	PART NAME
3	2	AXLE SUPPORT
4	1	AXLE
5	2	BUSHING



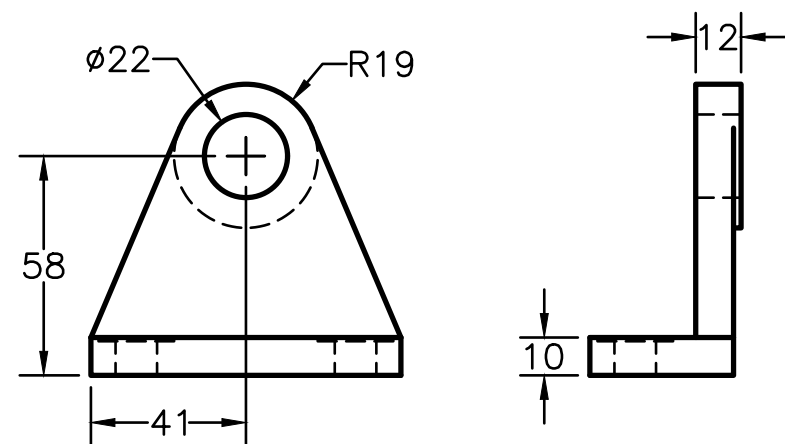
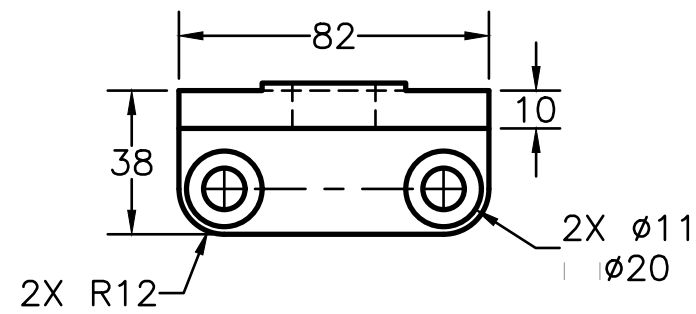
DIGITAL DESIGN  
GRAPHICS  
TECHNOLOGY

WWW.DDGT.NET

*Cosmic Curiosities*  
Space Themed Toys and Puzzles  
Sebastian Zepeda  
Phone: (707) 337-5558  
CosmicToysAndPuzzles@gmail.com  
http://ddgt.net/StudentPages/szepeda

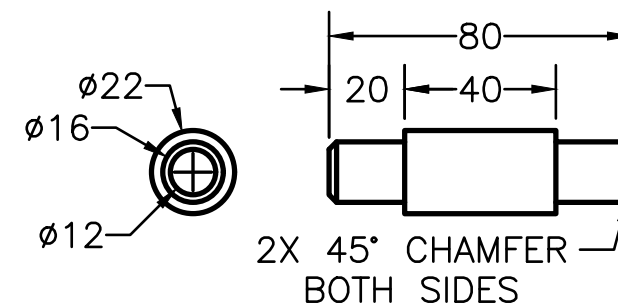
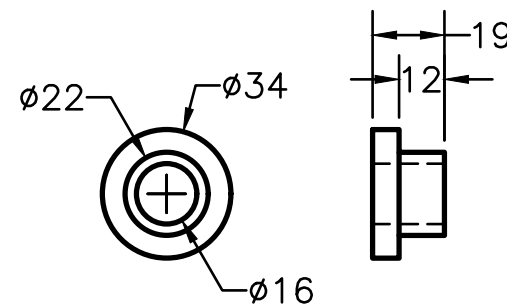
## LEGEND:

- ∅ DIAMETER
- R RADIUS
- DEGREES
- | SPOTFACE



AXLE SUPPORT  
SCALE 1:2

BUSHING  
SCALE 1:2



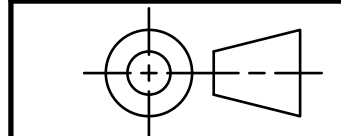
AXLE  
SCALE 1:2

## GENERAL NOTES:

FASTEN ASSEMBLY TO A 6mm STEEL PLATE BY FOUR M10 40mm LONG HEX HEAD BOLTS, NUTS AND LOCK WASHERS.

ROUNDS AND FILLETS R3

METRIC



TOLERANCES UNLESS SPECIFIED:  
MILLIMETERS:  
WHOLE NUMBERS = ±.5  
X = ±.25  
XX = ±.12  
FRACTIONAL ±1/64"  
ANGLES ±1 DEGREE  
SURFACES 32/

CLASS: DDGT 120

ASSIGNMENT #: #60 & #63

AUTOCAD DRAWING NAME:

CASTER

FIG #: 9-51

MANAGER: G. STROMMEN

DRAFTER: S. ZEPEDA

DATE: 5/8/2023

SCALE: AS NOTED

PAGE #: 3 OF 3

FASTEN ASSEMBLY TO A 6mm STEEL PLATE BY FOUR M10 40mm LONG HEX HEAD BOLTS, NUTS AND LOCK WASHERS.

ROUNDS AND FILLETS R3

PARTS LIST

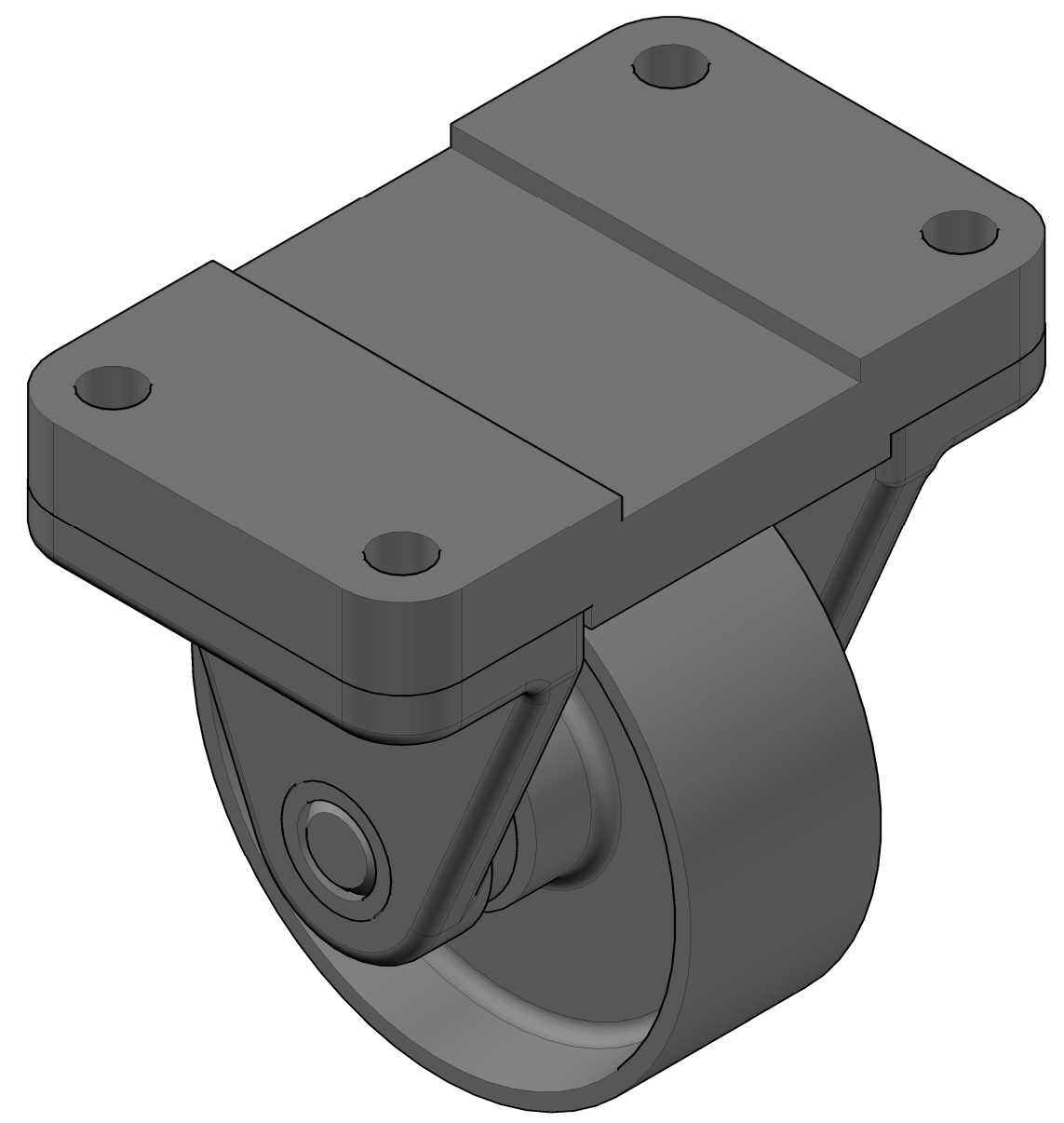
ITEM	QTY.	PART NAME	MATERIAL
1	1	TOP PLATE	MALLEABLE IRON
2	1	WHEEL	MALLEABLE IRON
3	2	AXLE SUPPORT	MALLEABLE IRON
4	1	AXLE	SAE 1020
5	2	BUSHING	BRONZE

FIT	BETWEEN PARTS
H8/f7	4 AND 5
H7/p6	3 AND 5
H8/f7	2 AND 4

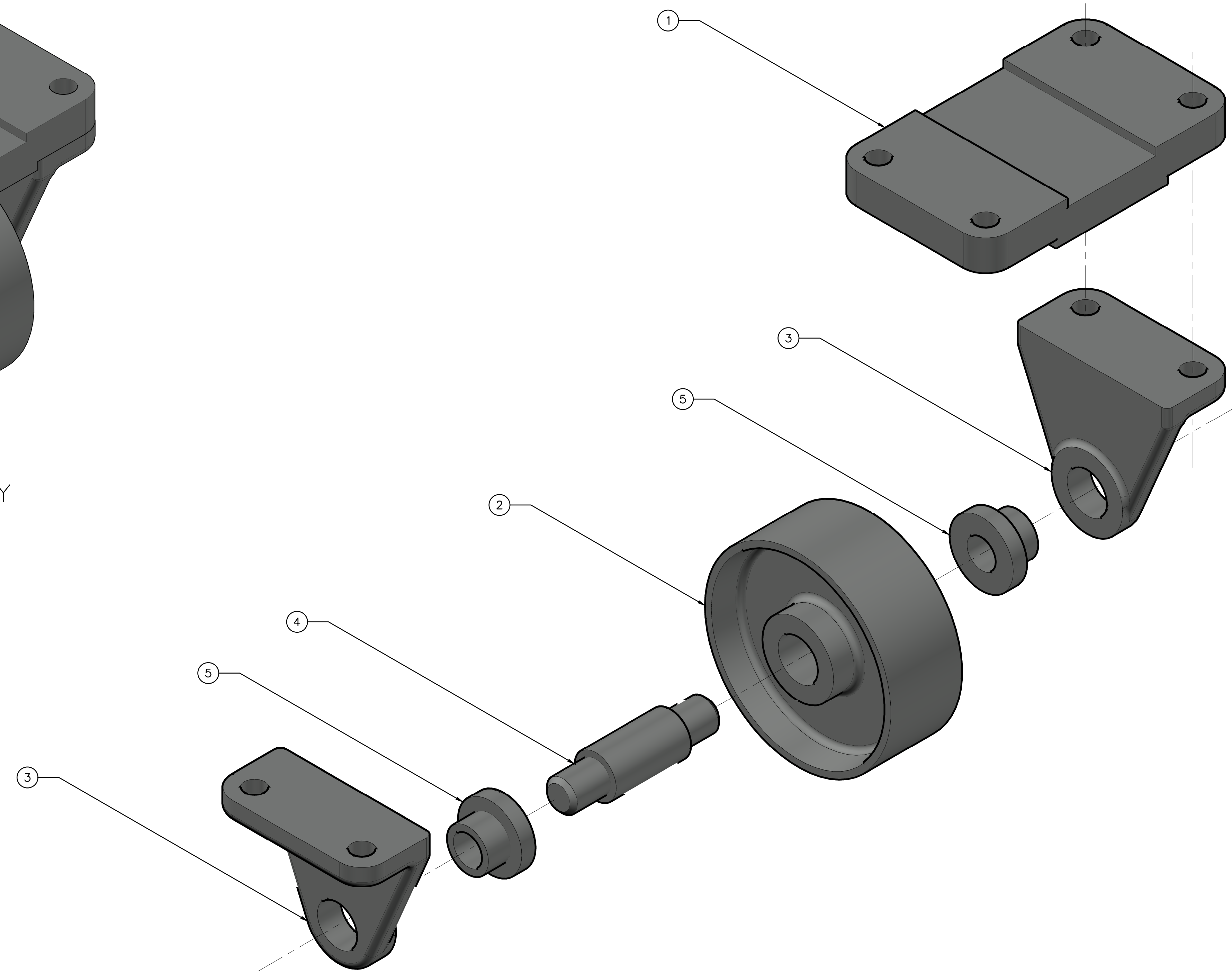
LEGEND:

- ∅ DIAMETER
- R RADIUS
- ° DEGREES
- | SPOTFACE

METRIC

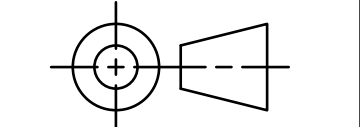


CASTER ASSEMBY  
SCALE 1:1



CASTER EXPLODED ASSEMBLY  
SCALE 1:1

Space Themed Toys and Puzzles  
Sebastian Zepeda  
Phone: (707) 337-5558  
CosmicToysAndPuzzles@gmail.com  
http://ddgt.net/StudentPages/sezepeda

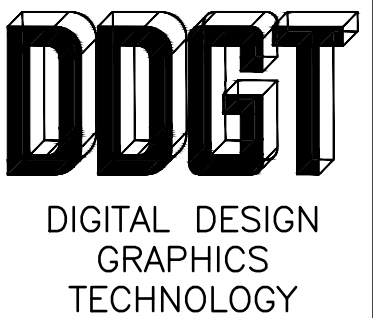


TOLERANCES UNLESS SPECIFIED:  
MILLIMETERS: ±.5  
WHOLE NUMBERS: ±.25  
FRACTIONAL: ±1/64"  
ANGLES ±1 DEGREE  
SURFACES ±.125

CLASS:	DDGT 120
ASSIGNMENT #:	#60 & #63
AUTOCAD DRAWING NAME:	CASTER
FIG #:	9-51
MANAGER:	G. STROMMEN
DRAFTER:	S. ZEPEDA
DATE:	5/8/2023
SCALE:	AS NOTED
PAGE #:	1 OF 3

FIT	BETWEEN PARTS
H8/f7	4 AND 5
H7/p6	3 AND 5
H8/f7	2 AND 4

PARTS LIST			
ITEM	QTY.	PART NAME	MATERIAL
1	1	TOP PLATE	MALLEABLE IRON
2	1	WHEEL	MALLEABLE IRON



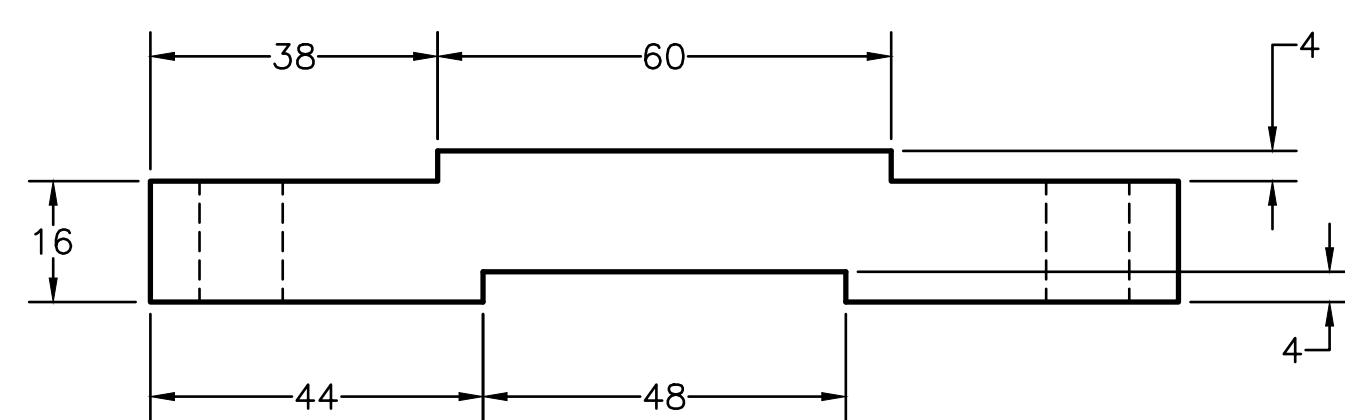
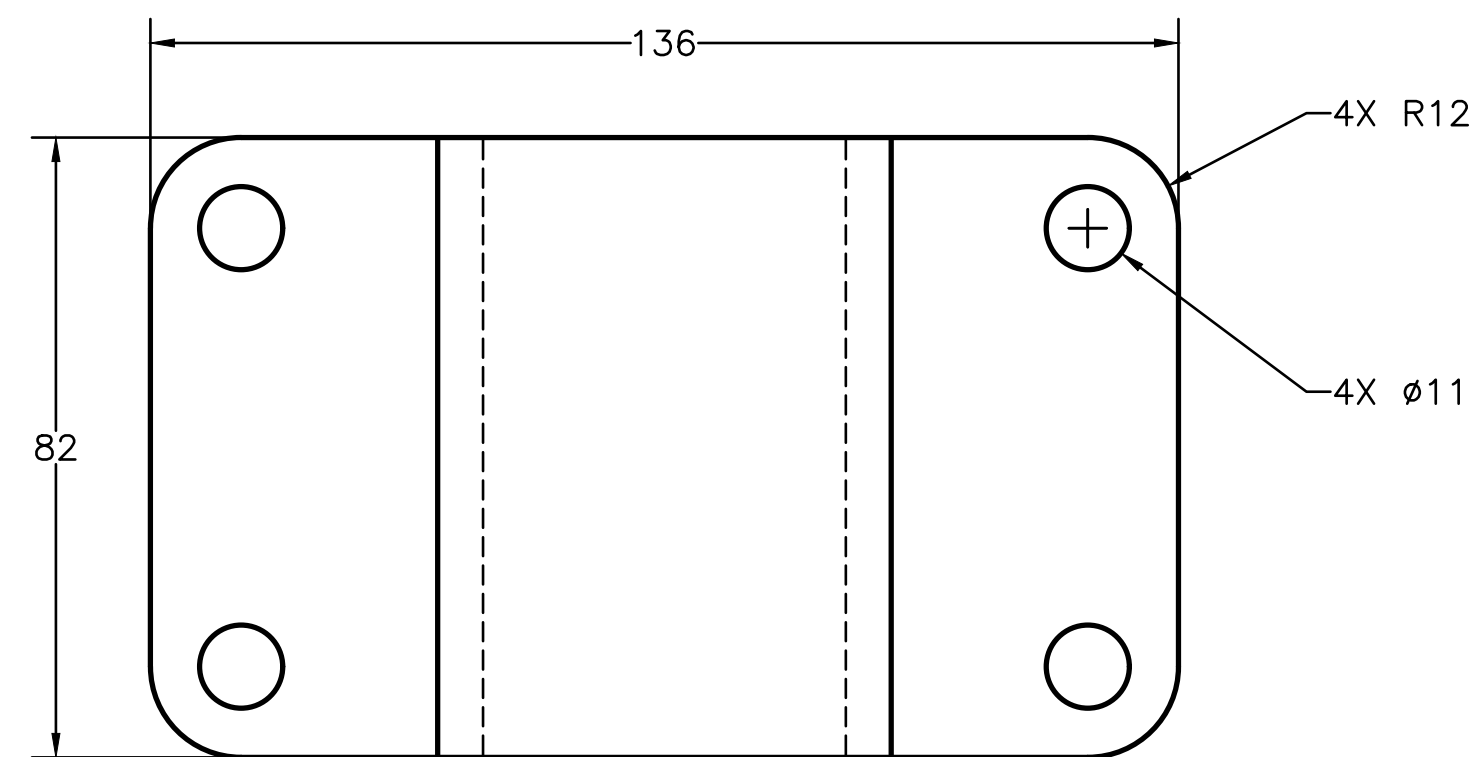
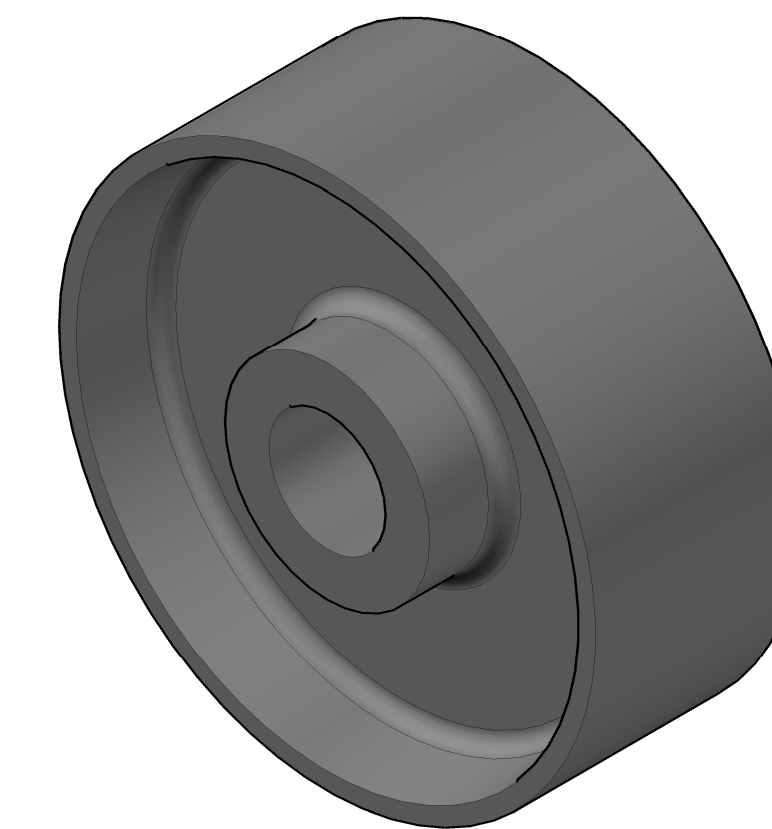
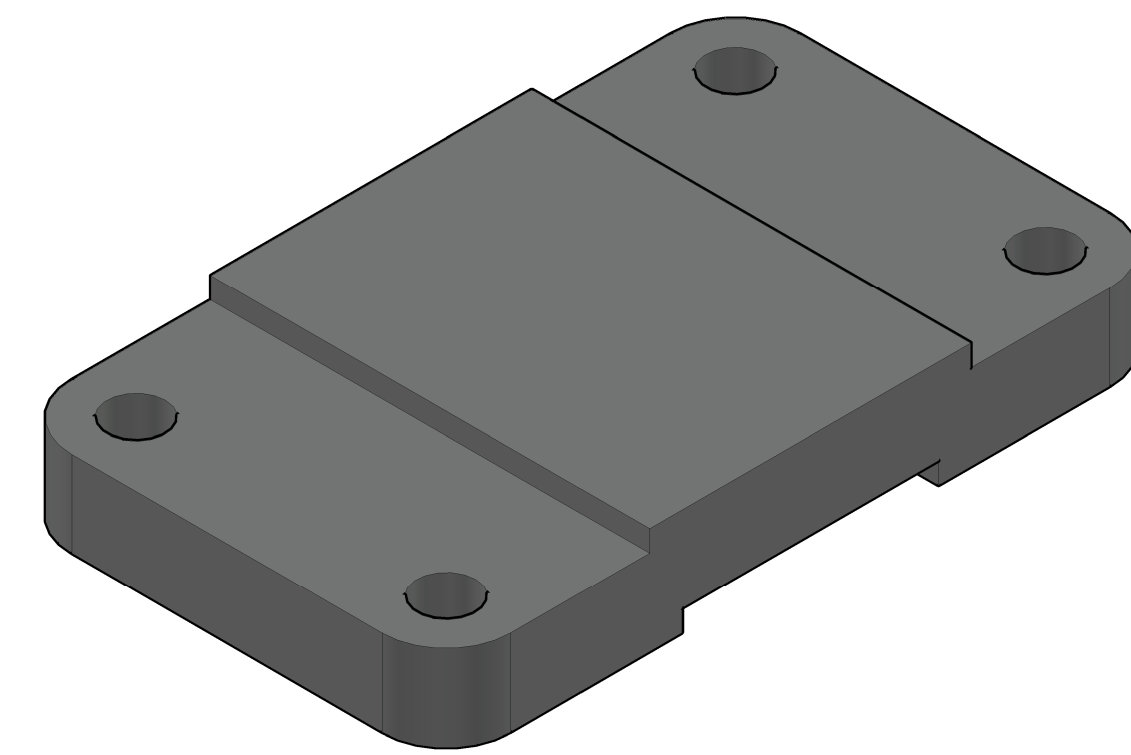
WWW.DDGT.NET

GENERAL NOTES:  
FASTEN ASSEMBLY TO A 6mm STEEL PLATE BY FOUR M10 40mm LONG HEX HEAD BOLTS, NUTS AND LOCK WASHERS.

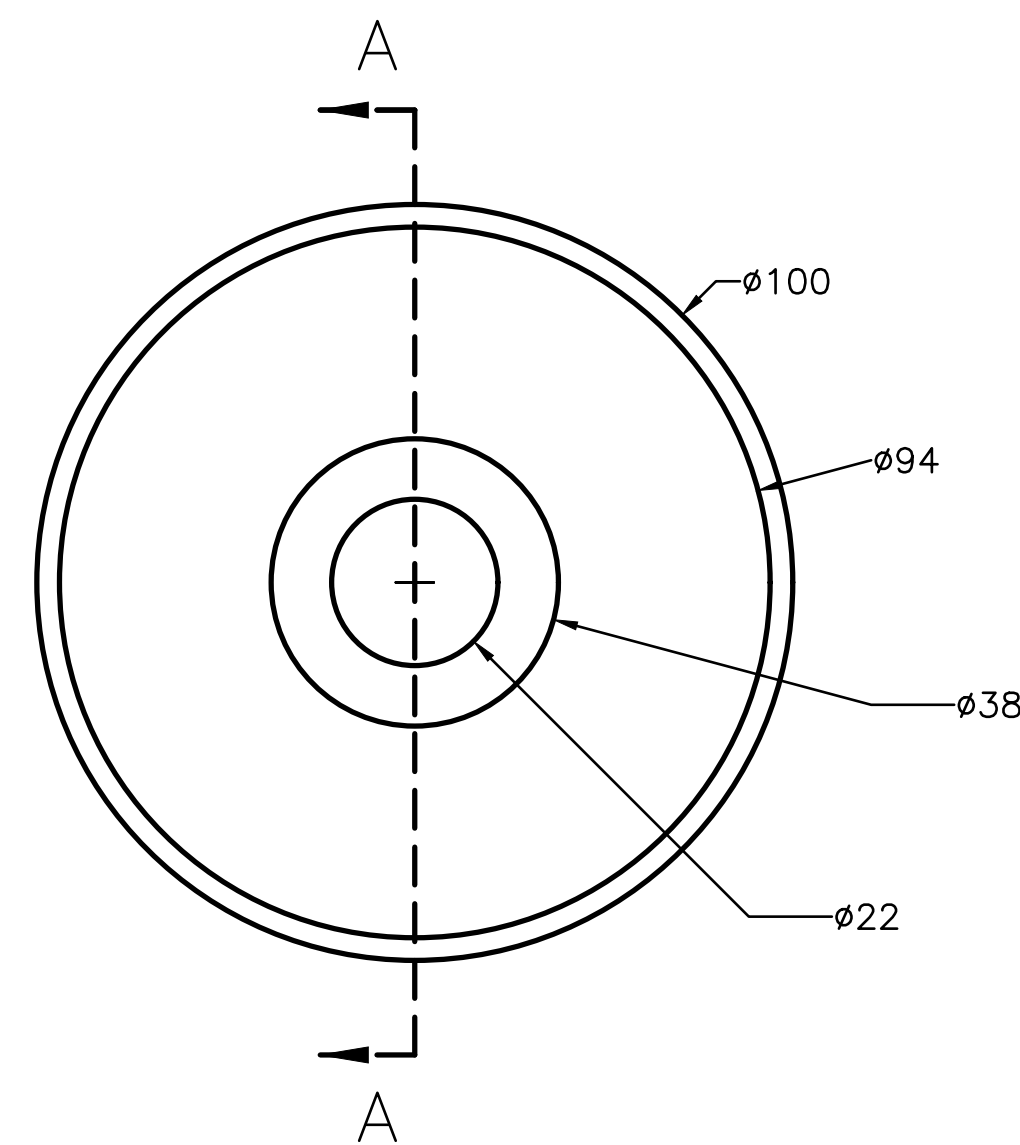
ROUNDS AND FILLETS R3

**LEGEND:**  
 Ø DIAMETER  
 R RADIUS  
 ° DEGREES  
 | SPOTFACE

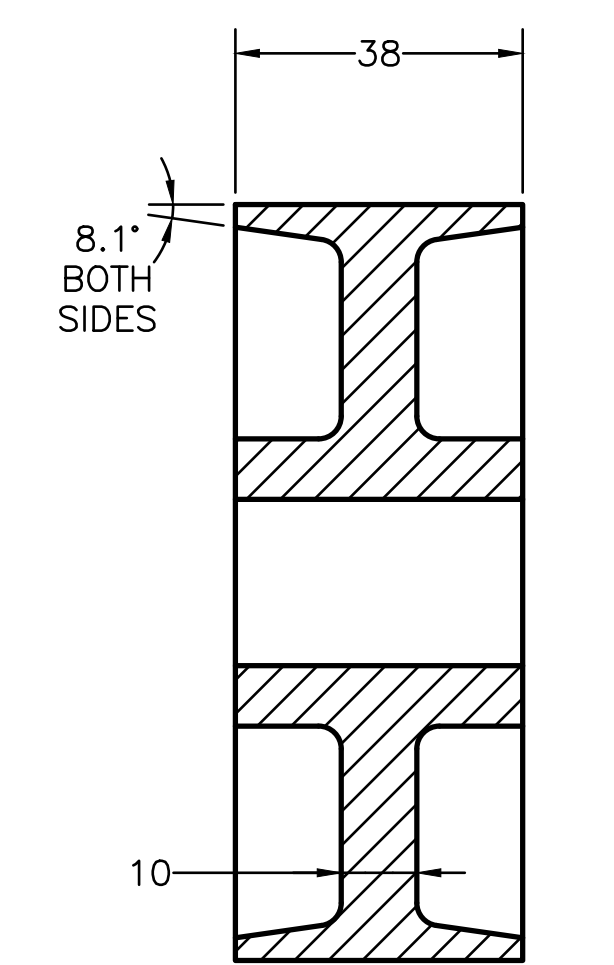
METRIC



TOP PLATE  
SCALE 1:1

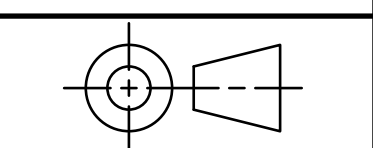


WHEEL  
SCALE 1:1



SECTION A-A

**Cosmic Curiosities**  
 Space Themed Toys and Puzzles  
 Sebastian Zepeda  
 Phone: (707) 337-5558  
 CosmicToysAndPuzzles@gmail.com  
 http://ddgt.net/StudentPages/sezepeda

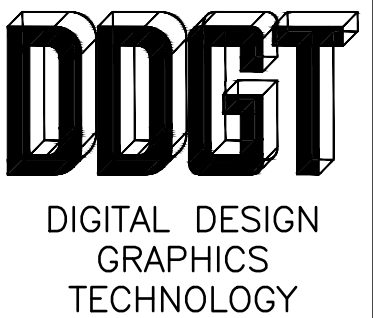


TOLERANCES UNLESS SPECIFIED:  
 MILLIMETERS: ±.5  
 WHOLE NUMBERS: ±.25  
 FRACTIONAL: ±1/64"  
 ANGLES: ±1 DEGREE  
 SURFACES:

CLASS:	DDGT 120
ASSIGNMENT #:	#60 & #63
AUTOCAD DRAWING NAME:	CASTER
FIG #:	9-51
MANAGER:	G. STROMMEN
DRAFTER:	S. ZEPEDA
DATE:	5/8/2023
SCALE:	AS NOTED
PAGE #:	2 OF 3

FIT	BETWEEN PARTS
H8/f7	4 AND 5
H7/p6	3 AND 5
H8/f7	2 AND 4

PARTS LIST			
ITEM	QTY.	PART NAME	MATERIAL
3	2	AXLE SUPPORT	MALLEABLE IRON
4	1	AXLE	SAE 1020
5	2	BUSHING	BRONZE



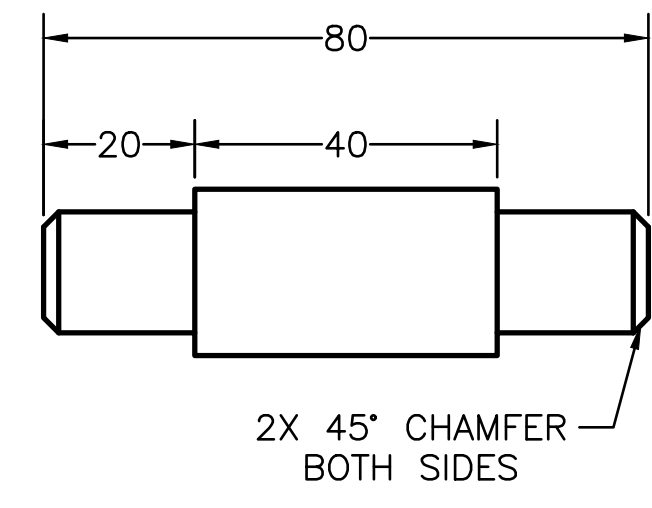
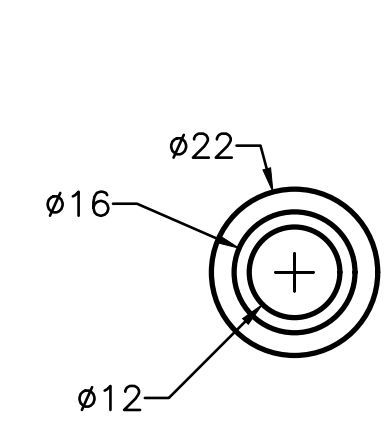
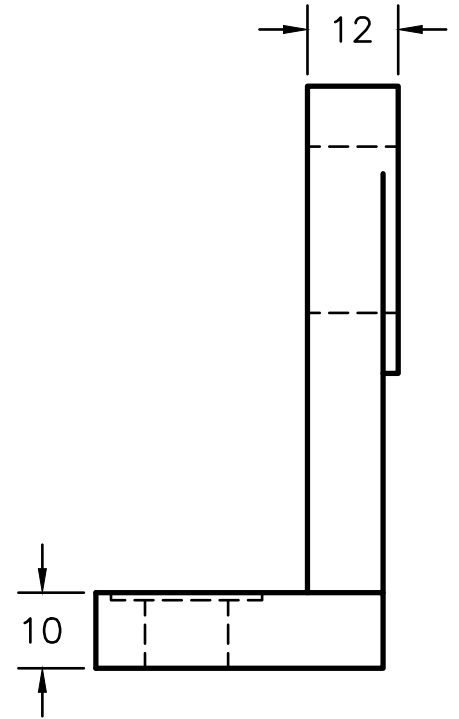
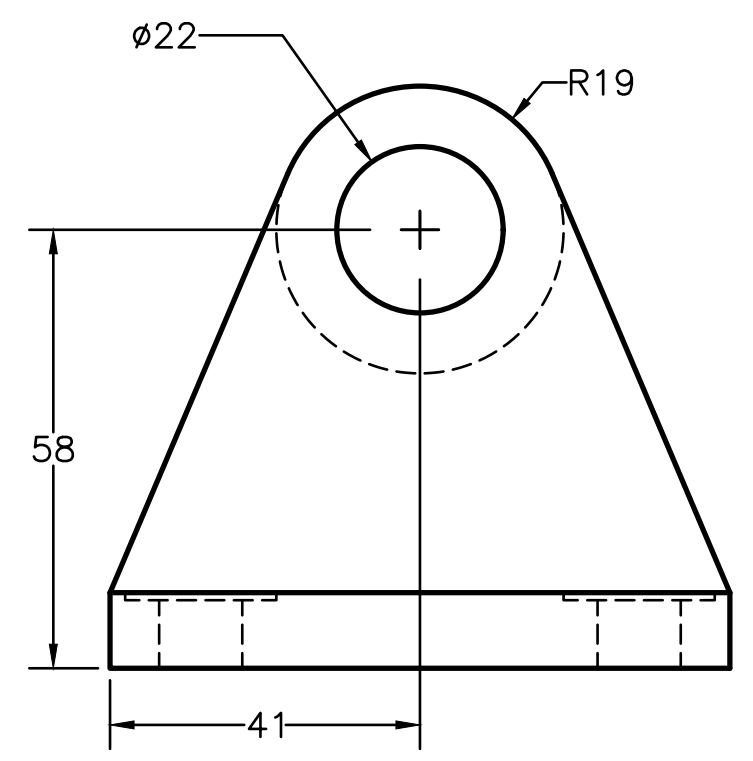
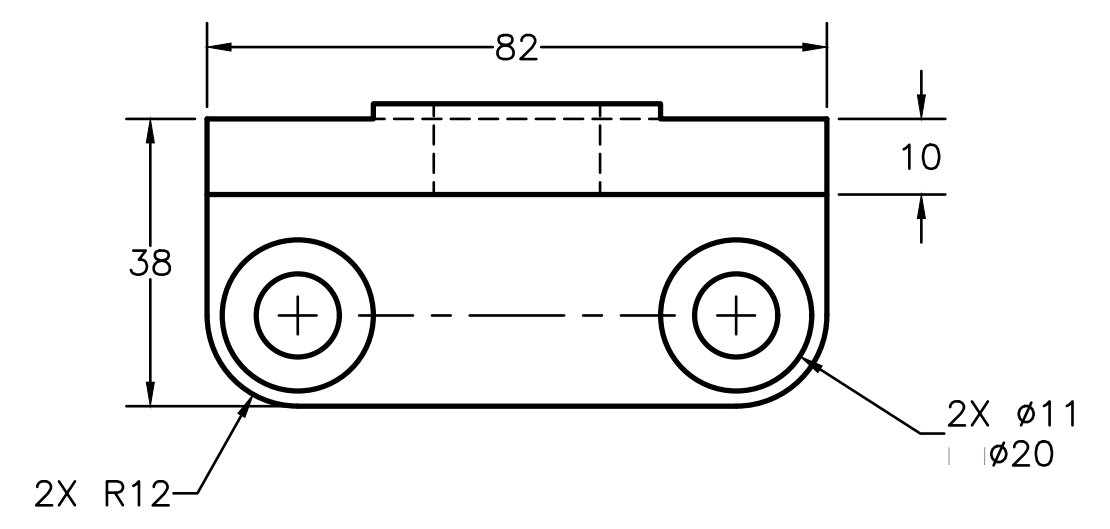
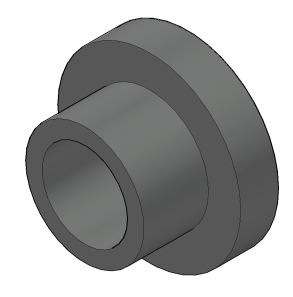
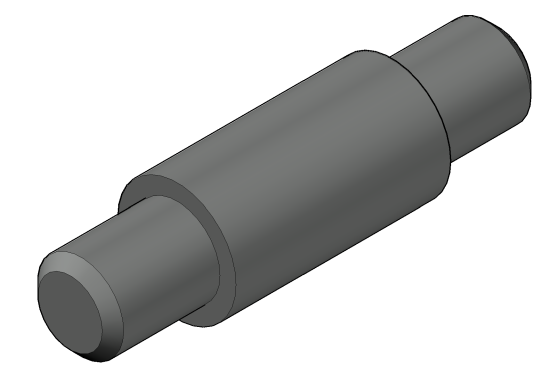
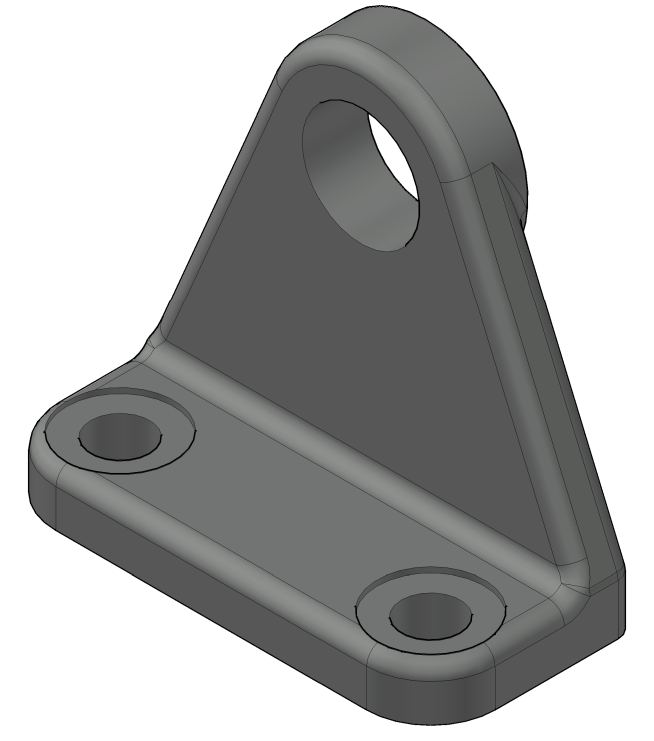
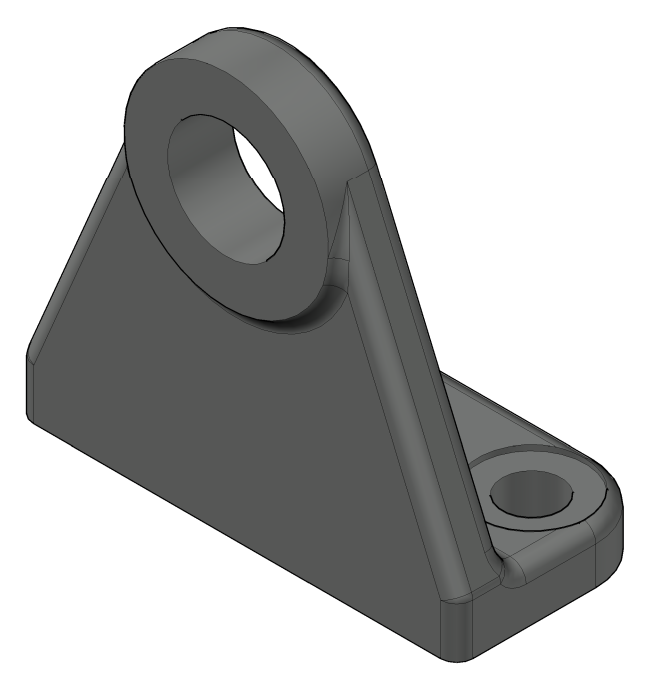
WWW.DDGT.NET

GENERAL NOTES:  
 FASTEN ASSEMBLY TO A 6mm STEEL PLATE BY FOUR M10 40mm LONG HEX HEAD BOLTS, NUTS AND LOCK WASHERS.

ROUNDS AND FILLETS R3

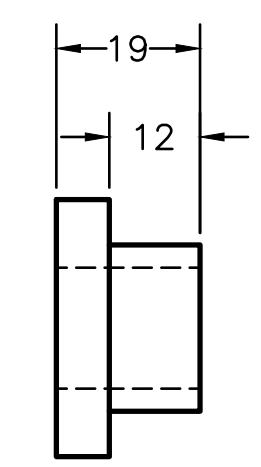
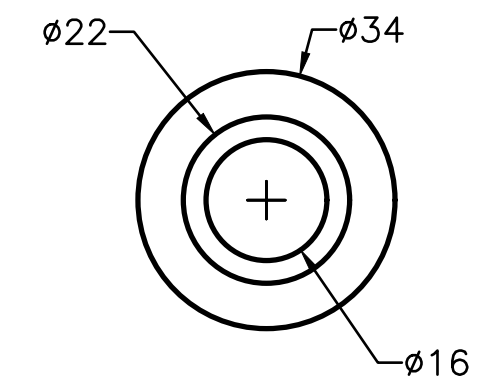
LEGEND:  
 Ø DIAMETER  
 R RADIUS  
 ° DEGREES  
 ▭ SPOTFACE

METRIC



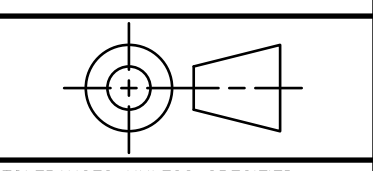
AXLE  
SCALE 1:1

AXLE SUPPORT  
SCALE 1:1



BUSHING  
SCALE 1:1

**Cosmic Curiosities**  
 Space Themed Toys and Puzzles  
 Sebastian Zepeda  
 Phone: (707) 337-5558  
 cosmicToysAndPuzzles@gmail.com  
 http://ddgt.net/StudentPages/sezepeda



TOLERANCES UNLESS SPECIFIED:  
 MILLIMETERS: ±.5  
 WHOLE NUMBERS: ±.25  
 FRACTIONAL: ±1/64"  
 ANGLES: ±1 DEGREE  
 SURFACES: ▭

CLASS:	DDGT 120
ASSIGNMENT #:	#60 & #63
AUTOCAD DRAWING NAME:	CASTER
FIG #:	9-51
MANAGER:	G. STROMMEN
DRAFTER:	S. ZEPEDA
DATE:	5/8/2023
SCALE:	AS NOTED
PAGE #:	3 OF 3