

# GENERAL NOTES:

FASTENED ASSEMBLY TO A 6mm STEEL PLATE BY FOUR M10 X 40mm LONG HEX HEAD BOLTS, NUTS, AND LOCK WASHERS.

ROUNDS AND FILLETS R3

FIT	BETWEEN PARTS
H8/f7	4 AND 5
H7/p6	3 AND 5
H8/f7	2 AND 4

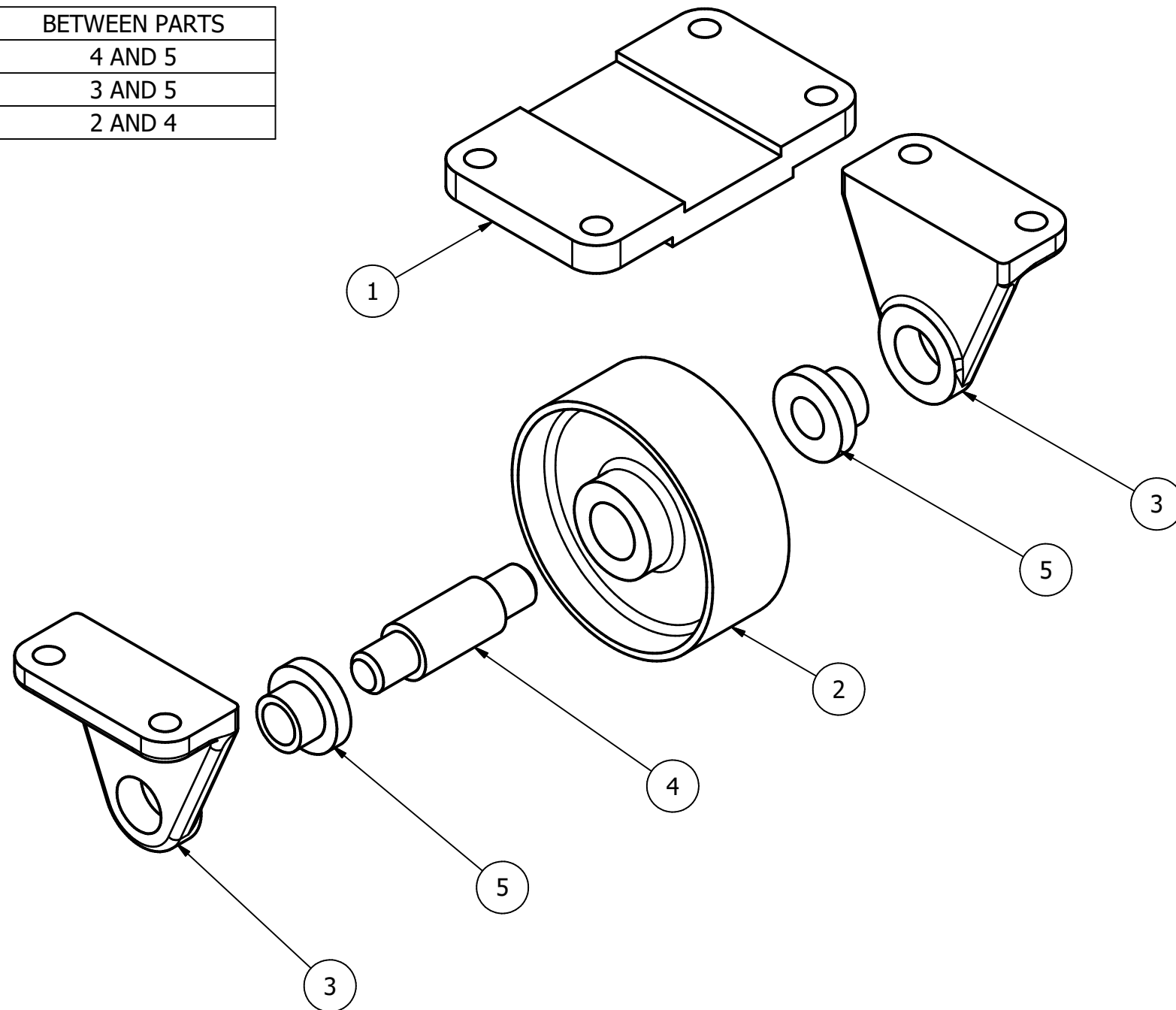
PARTS LIST			
ITEM	QTY	PART NUMBER	MATERIAL
1	1	TOP PLATE	MALLEABLE IRON
2	1	WHEEL	MALLEABLE IRON
3	2	AXLE SUPPORT	MALLEABLE IRON
4	1	AXLE	SAE 1020
5	2	BUSHING	BRONZE



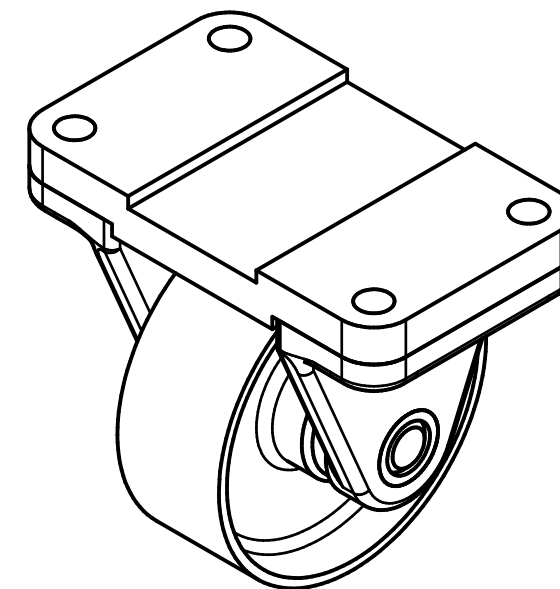
DIGITAL DESIGN  
GRAPHICS  
TECHNOLOGY

WWW.DDGT.NET

METRIC



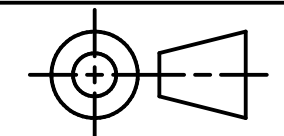
CASTER EXPLODED ASSEMBLY  
SCALE 1 / 2



CASTER ASSEMBLY  
SCALE 1 / 2

## LEGEND:

- ∅ DIAMETER
- R RADIUS
- ° DEGREES
- SPOTFACE



TOLERANCES UNLESS SPECIFIED:  
DECIMAL INCHES:  
X = ±.020  
XX = ±.010  
XXX = ±.005  
FRACTIONAL ±1/64"  
ANGLES ±1 DEGREE  
SURFACES 32✓

CLASS: DDGT 120

ASSIGNMENT #: #67

INVENTOR DRAWING NAME:  
CASTER

FIG #: 9-51

MANAGER: G. STROMMEN

DRAFTER: S.ZEPEDA

DATE: 11/14/2022

SCALE: AS NOTED

PAGE #: 1 OF 3

# GENERAL NOTES:

FASTENED ASSEMBLY TO A 6mm STEEL PLATE BY FOUR M10 X 40mm LONG HEX HEAD BOLTS, NUTS, AND LOCK WASHERS.

ROUNDS AND FILLETS R3

# LEGEND:

- ∅ DIAMETER
- R RADIUS
- ° DEGREES
- SPOTFACE

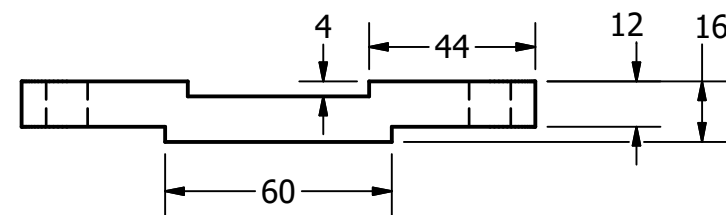
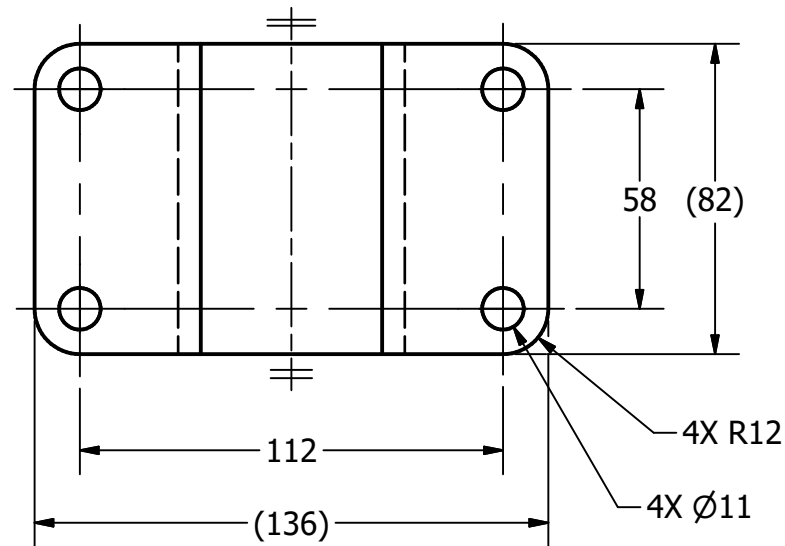
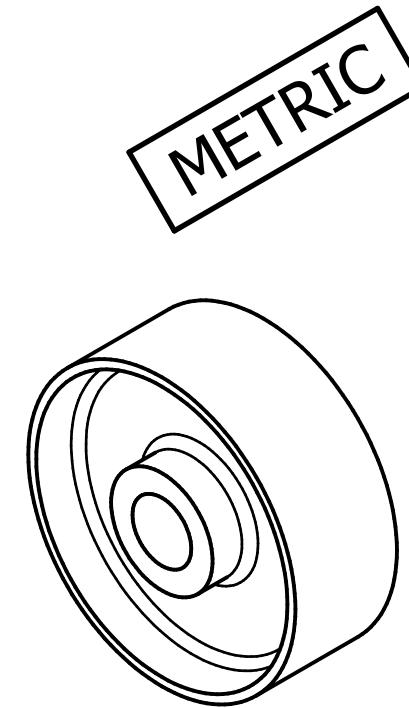
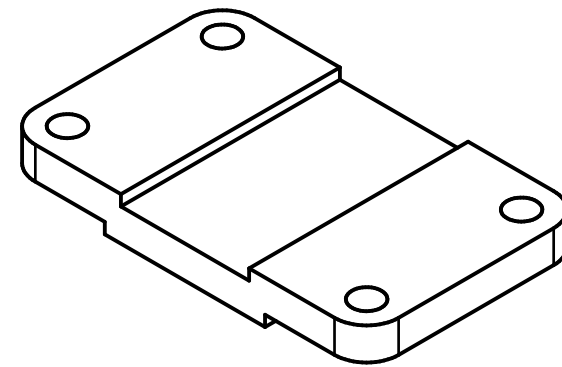
## PARTS LIST

ITEM	QTY	PART NUMBER
1	1	TOP PLATE
2	1	WHEEL

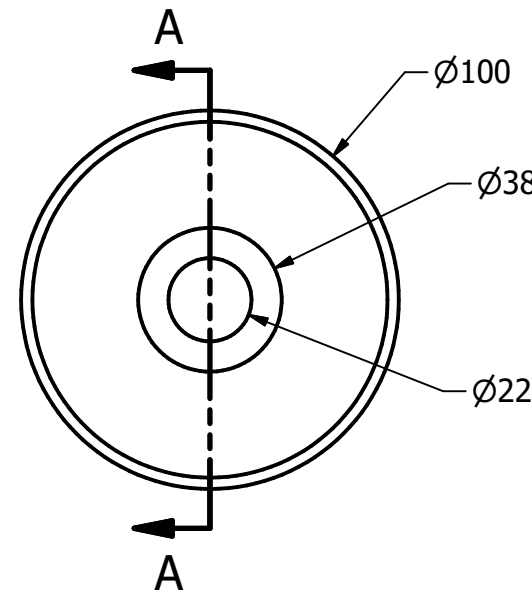


DIGITAL DESIGN  
GRAPHICS  
TECHNOLOGY

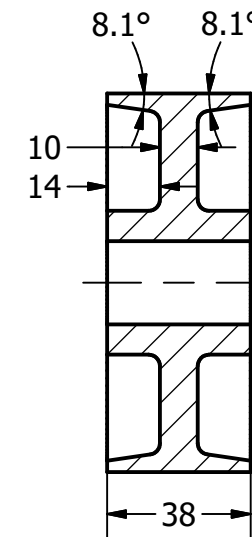
WWW.DDGT.NET



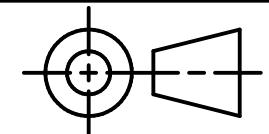
TOP PLATE  
SCALE 1 / 2



WHEEL  
SCALE 1 / 2



SECTION A-A  
SCALE 1 / 2



TOLERANCES UNLESS SPECIFIED:  
DECIMAL INCHES:  
X = ±.020  
XX = ±.010  
XXX = ±.005  
FRACTIONAL ±1/64"  
ANGLES ±1 DEGREE  
SURFACES 32✓

CLASS: DDGT 120

ASSIGNMENT #: #67

INVENTOR DRAWING NAME:

CASTER

FIG #: 9-51

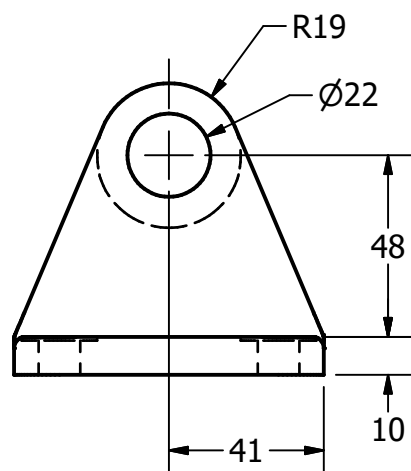
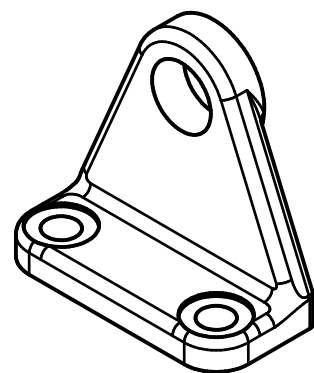
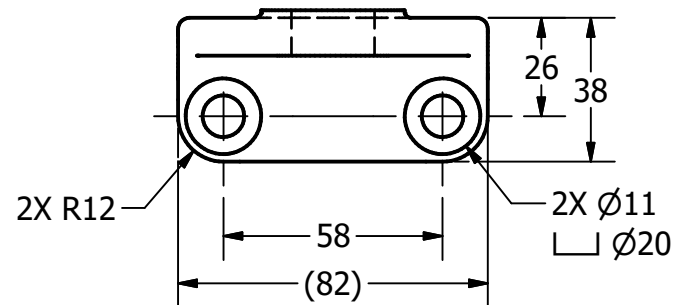
MANAGER: G. STROMMEN

DRAFTER: S.ZEPEDA

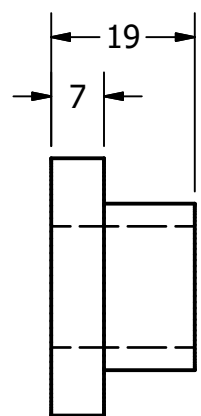
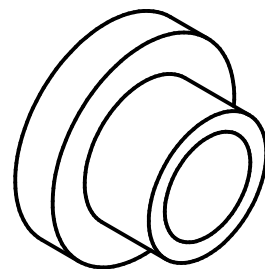
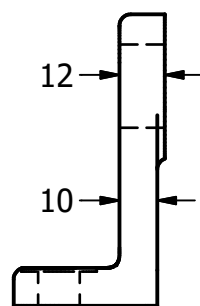
DATE: 11/14/2022

SCALE: AS NOTED

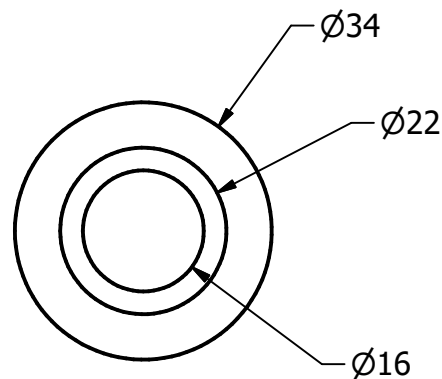
PAGE #: 2 OF 3



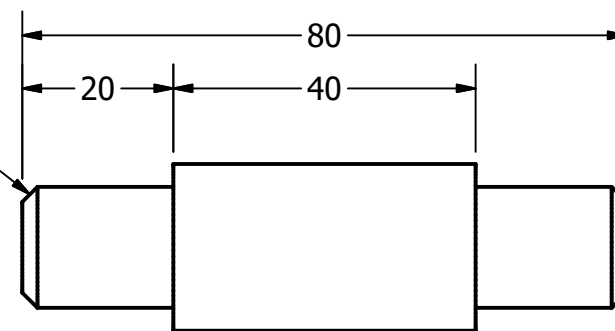
AXLE SUPPORT  
SCALE 1 / 2



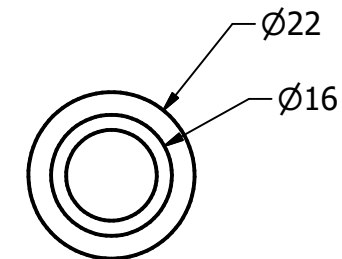
BUSHING  
SCALE 1 : 1



2 X 45.0° CHAMFER  
(BOTH SIDES)



AXLE  
SCALE 1 : 1



**LEGEND:**

- Ø DIAMETER
- R RADIUS
- ° DEGREES
- └ SPOTFACE

PARTS LIST

ITEM	QTY	PART NUMBER
3	2	AXLE SUPPORT
4	1	AXLE
5	2	BUSHING

**GENERAL NOTES:**

FASTENED ASSEMBLY TO A 6mm STEEL PLATE BY FOUR M10 X 40mm LONG HEX HEAD BOLTS, NUTS, AND LOCK WASHERS.

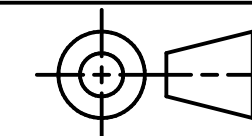
ROUNDS AND FILLETS R3

**METRIC**



DIGITAL DESIGN  
GRAPHICS  
TECHNOLOGY

WWW.DDGT.NET



TOLERANCES UNLESS SPECIFIED:  
DECIMAL INCHES:  
X = ±.020  
XX = ±.010  
XXX = ±.005  
FRACTIONAL ±1/64"  
ANGLES ±1 DEGREE  
SURFACES 32√

CLASS: DDGT 120

ASSIGNMENT #: #67

INVENTOR DRAWING NAME:  
CASTER

FIG #: 9-51

MANAGER: G. STROMMEN

DRAFTER: S.ZEPEDA

DATE: 11/14/2022

SCALE: AS NOTED

PAGE #: 3 OF 3