

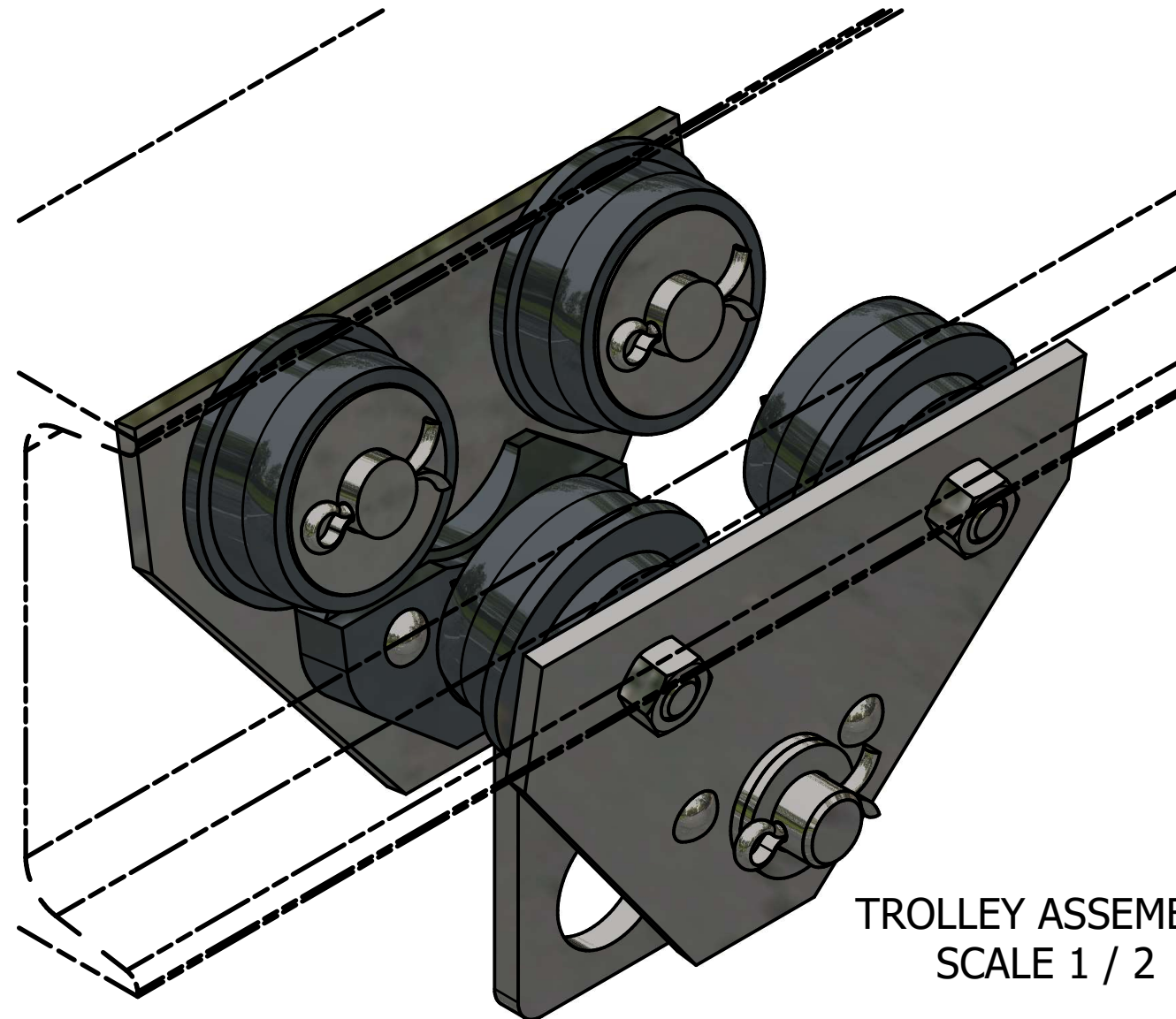
## GENERAL NOTES:

TROLLEY TO BE MOUNTED ON AN S200 X 34 BEAM

ALL CHAMFERS ARE 2 X 2 UNLESS OTHERWISE NOTED

### PARTS LIST

ITEM	QTY	PART NUMBER	MATERIAL	DESCRIPTION
1	2	SIDE PLATE SUB-ASSEMBLY		
1.1	1	SIDE PLATE	MILD STEEL	
1.2	1	GUIDE	CAST IRON	
1.3	2	RIVET	STANDARD	BUTTON HEAD, Ø10 X 60 LONG
2	1	AXLE	COLD ROLLED STEEL	
3	1	HOOK	MILD STEEL	10 THICK
4	44	ROLLER BEARING	COLD ROLLED STEEL	Ø10 X 38 LONG
5	4	WHEEL	CAST IRON	
6	4	WHEEL AXLE	COLD ROLLED STEEL	
7	12	ADJUSTING WASHER	STANDARD	Ø26ID X Ø44OD X 4 THICK
8	4	WASHER	STANDARD	Ø26ID X Ø65OD X 3 THICK
9	4	LOCKNUT	STANDARD	M16 X 2 (PREVAILING TORQUE INSERT-TYPE)
10	6	COTTER PIN	STANDARD	Ø6 X 40 LONG



TROLLEY ASSEMBLY  
SCALE 1 / 2

## LEGEND:

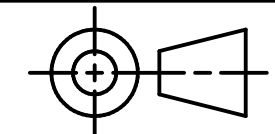
Ø DIAMETER  
R RADIUS  
° DEGREES

**METRIC**

# DDGT

DIGITAL DESIGN  
GRAPHICS  
TECHNOLOGY

WWW.DDGT.NET



TOLERANCES UNLESS SPECIFIED:  
MILLIMETERS:  
WHOLE NUMBER = ±.5  
XX = ±.25  
XXX = ±.12

ANGLES ±1 DEGREE

SURFACES  $\sqrt{\text{32}}$

CLASS: DDGT 120

ASSIGNMENT #: #70

INVENTOR DRAWING NAME:  
TROLLEY

FIG #: 14-85

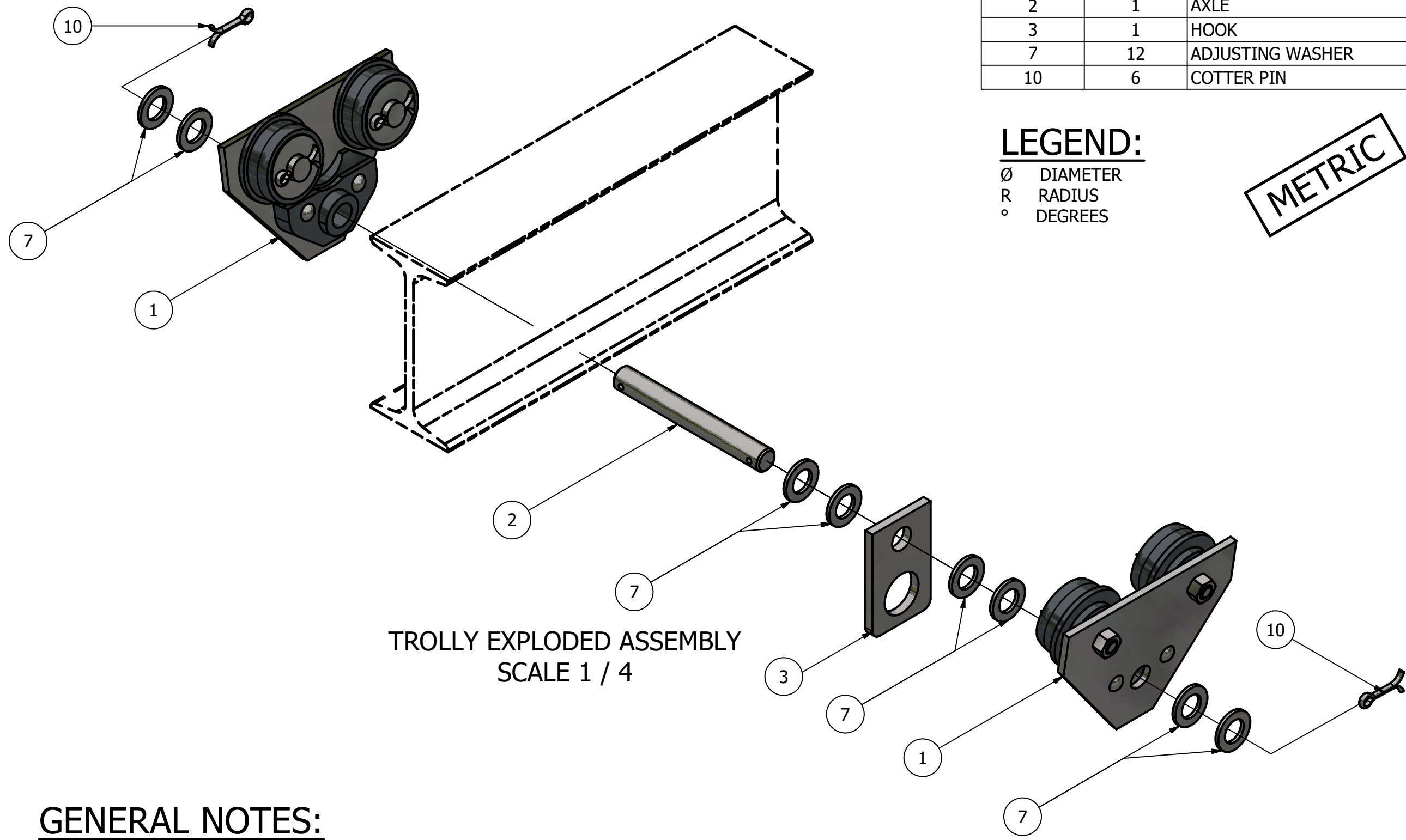
MANAGER: G. STROMMEN

DRAFTER: S.ZEPEDA

DATE: 12/7/2022

SCALE: AS NOTED

PAGE #: 1 OF 6



TROLLEY EXPLODED ASSEMBLY  
SCALE 1 / 4

PARTS LIST		
ITEM	QTY	PART NUMBER
1	2	SIDE PLATE SUB-ASSEMBLY
2	1	AXLE
3	1	HOOK
7	12	ADJUSTING WASHER
10	6	COTTER PIN

**LEGEND:**

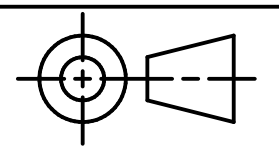
- ∅ DIAMETER
- R RADIUS
- ° DEGREES

METRIC



DIGITAL DESIGN  
GRAPHICS  
TECHNOLOGY

WWW.DDGT.NET



TOLERANCES UNLESS SPECIFIED:  
MILLIMETERS:  
WHOLE NUMBER = ±.5  
XX = ±.25  
XXX = ±.12  
ANGLES ±1 DEGREE  
SURFACES  $\sqrt{\text{32}}$

CLASS: DDGT 120

ASSIGNMENT #: #70

INVENTOR DRAWING NAME:  
TROLLEY

FIG #: 14-85

MANAGER: G. STROMMEN

DRAFTER: S.ZEPEDA

DATE: 12/7/2022

SCALE: AS NOTED

PAGE #: 2 OF 6

**GENERAL NOTES:**

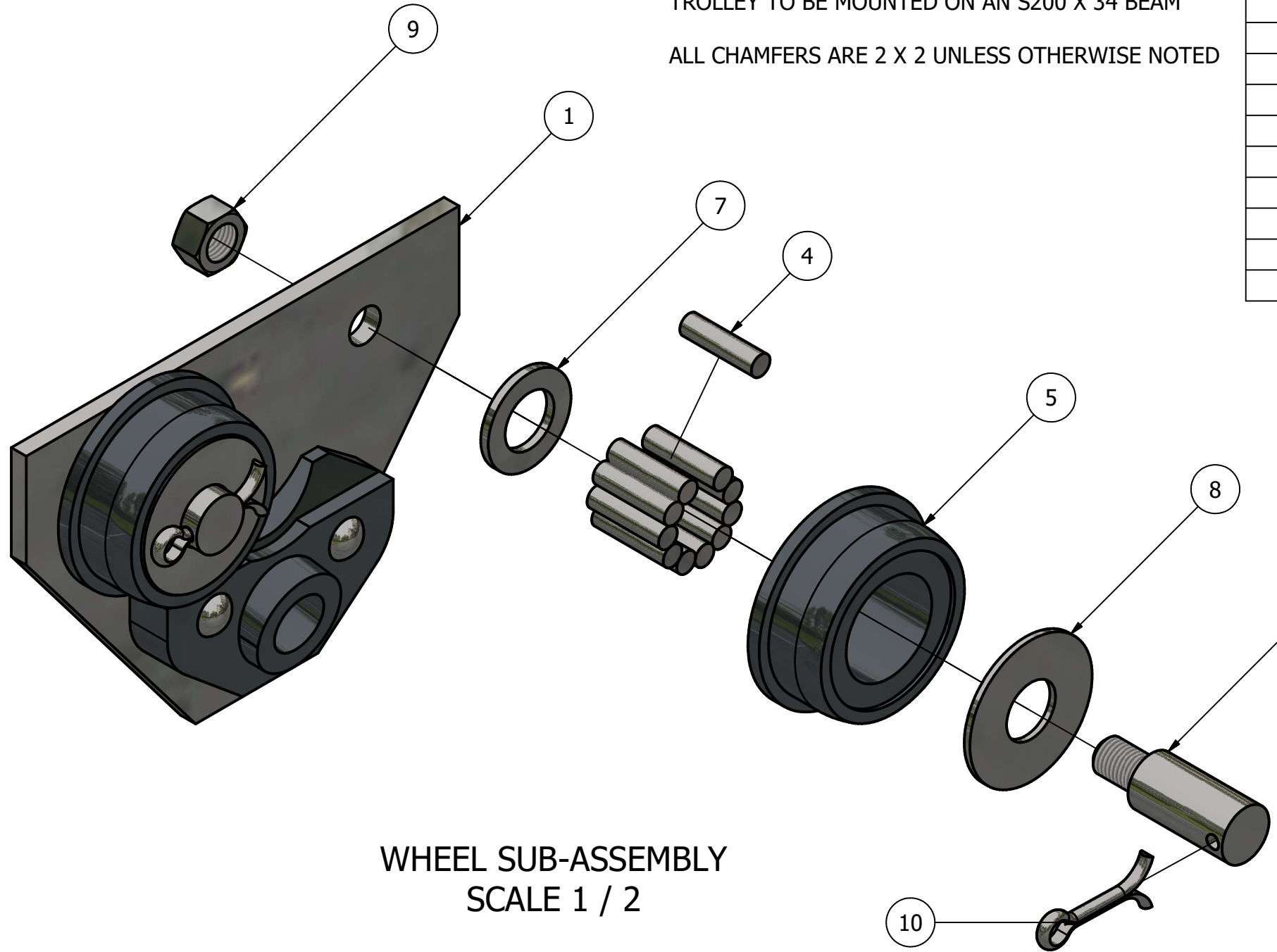
TROLLEY TO BE MOUNTED ON AN S200 X 34 BEAM

ALL CHAMFERS ARE 2 X 2 UNLESS OTHERWISE NOTED

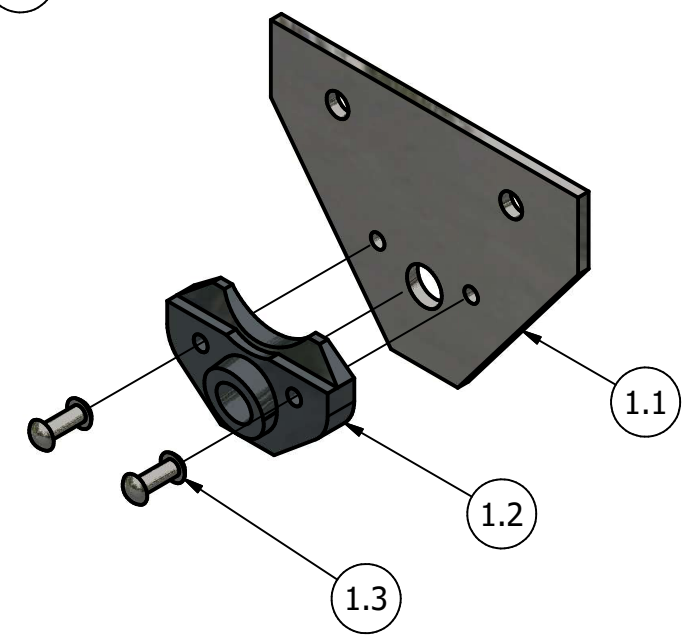
# GENERAL NOTES:

TROLLEY TO BE MOUNTED ON AN S200 X 34 BEAM

ALL CHAMFERS ARE 2 X 2 UNLESS OTHERWISE NOTED



WHEEL SUB-ASSEMBLY  
SCALE 1 / 2



SIDE PLATE SUB-ASSEMBLY  
SCALE 1 / 4

## PARTS LIST

ITEM	QTY	PART NUMBER
1	2	SIDE PLATE SUB-ASSEMBLY
1.1	1	SIDE PLATE
1.2	1	GUIDE
1.3	2	RIVET
4	44	ROLLER BEARING
5	4	WHEEL
6	4	WHEEL AXLE
7	12	ADJUSTING WASHER
8	4	WASHER
9	4	LOCKNUT
10	6	COTTER PIN

## LEGEND:

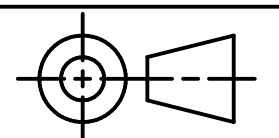
- ∅ DIAMETER
- R RADIUS
- ° DEGREES

METRIC



DIGITAL DESIGN  
GRAPHICS  
TECHNOLOGY

WWW.DDGT.NET



TOLERANCES UNLESS SPECIFIED:  
MILLIMETERS:  
WHOLE NUMBER = ±.5  
XX = ±.25  
XXX = ±.12  
ANGLES ±1 DEGREE  
SURFACES  $\sqrt{32}$

CLASS: DDGT 120

ASSIGNMENT #: #70

INVENTOR DRAWING NAME:  
TROLLEY

FIG #: 14-85

MANAGER: G. STROMMEN

DRAFTER: S.ZEPEDA

DATE: 12/7/2022

SCALE: AS NOTED

PAGE #: 3 OF 6

# GENERAL NOTES:

TROLLEY TO BE MOUNTED ON AN S200 X 34 BEAM

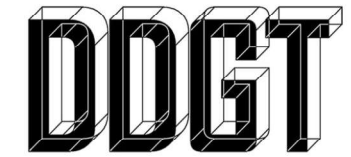
ALL CHAMFERS ARE 2 X 2 UNLESS OTHERWISE NOTED

# LEGEND:

∅ DIAMETER  
R RADIUS  
° DEGREES

## PARTS LIST

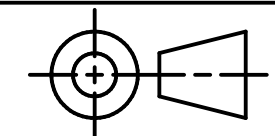
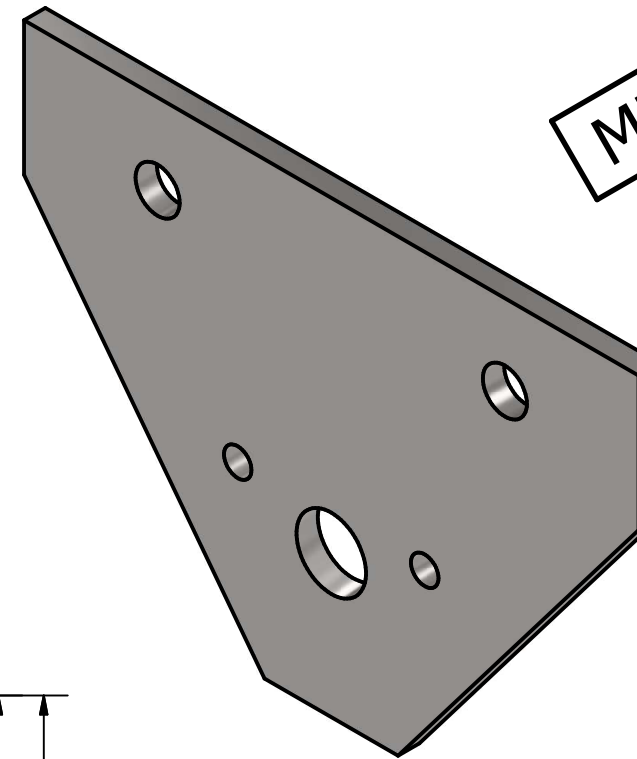
ITEM	QTY	PART NUMBER
1.1	1	SIDE PLATE



DIGITAL DESIGN  
GRAPHICS  
TECHNOLOGY

WWW.DDGT.NET

METRIC



TOLERANCES UNLESS SPECIFIED:  
MILLIMETERS:  
WHOLE NUMBER = ±.5  
XX = ±.25  
XXX = ±.12  
ANGLES ±1 DEGREE  
SURFACES  $\sqrt{32}$

CLASS: DDGT 120

ASSIGNMENT #: #70

INVENTOR DRAWING NAME:  
TROLLEY

FIG #: 14-85

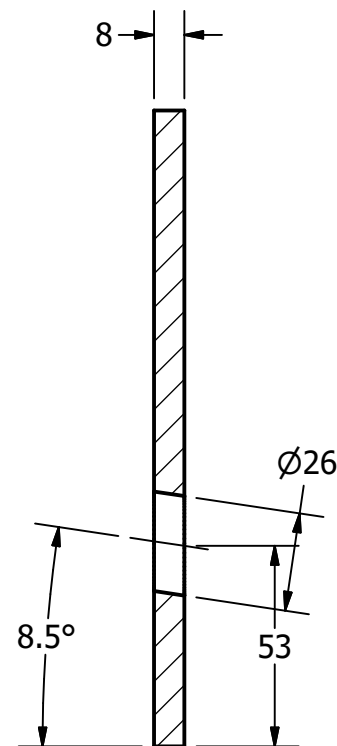
MANAGER: G. STROMMEN

DRAFTER: S.ZEPEDA

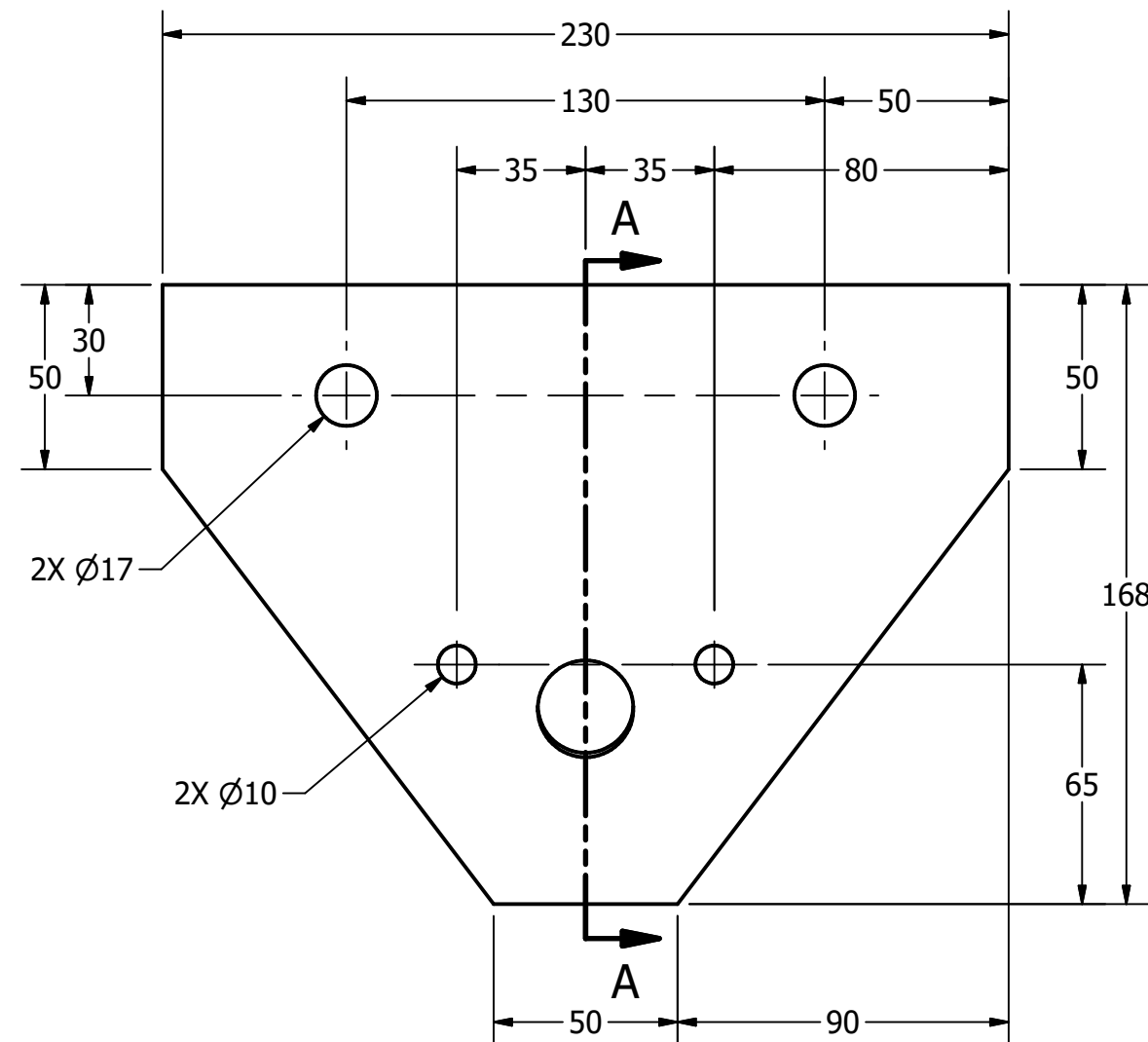
DATE: 12/7/2022

SCALE: AS NOTED

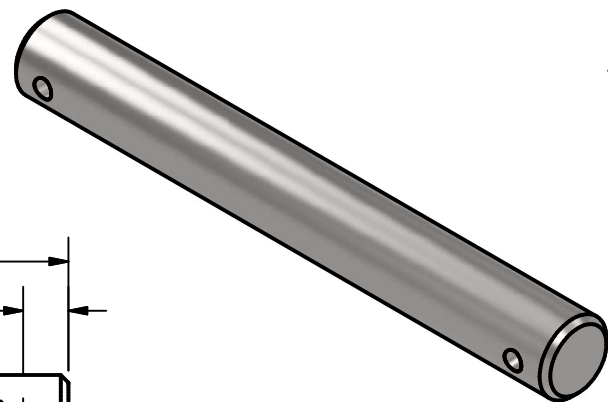
PAGE #: 4 OF 6



SECTION A-A  
SCALE 1 / 2



SIDE PLATE  
SCALE 1 / 2



**LEGEND:**

- ∅ DIAMETER
- R RADIUS
- ° DEGREES

**PARTS LIST**

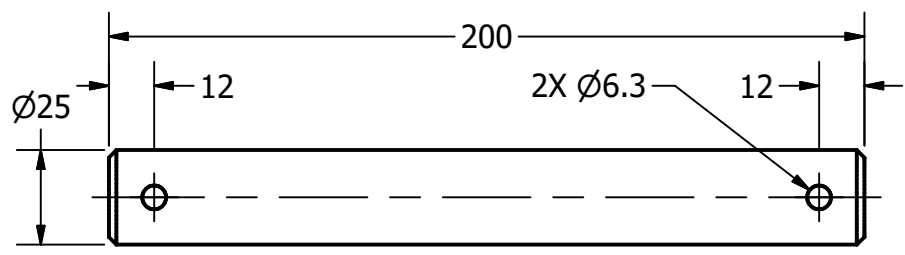
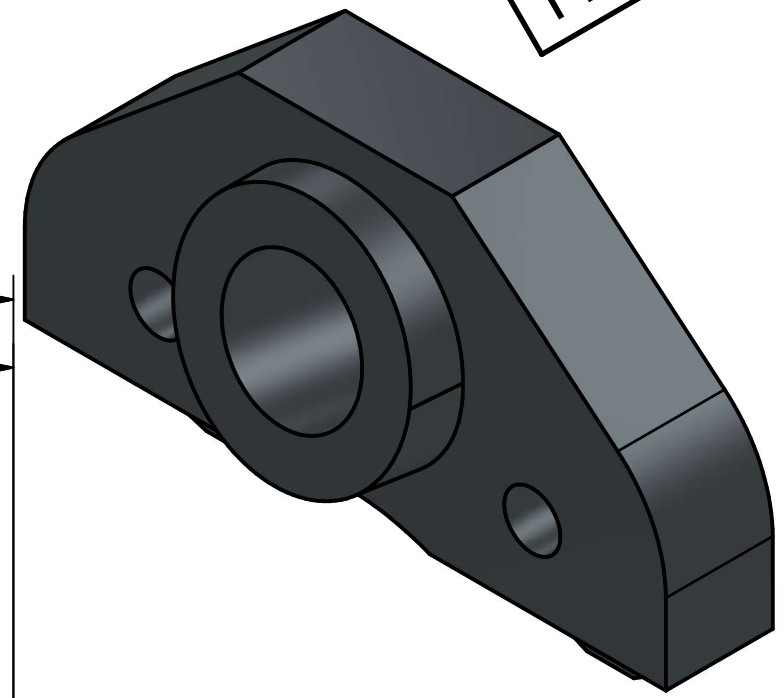
ITEM	QTY	PART NUMBER
1.2	1	GUIDE
2	1	AXLE



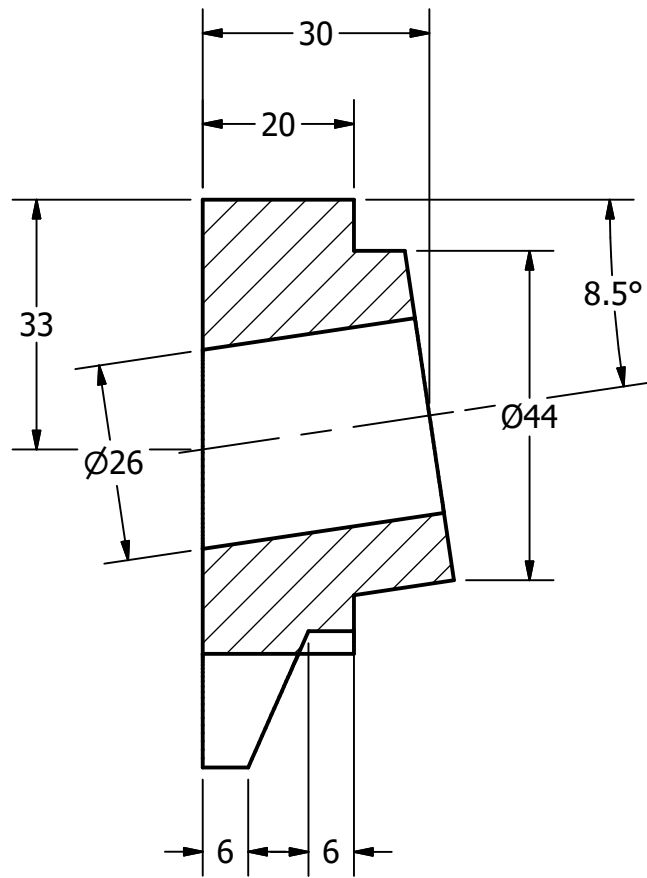
DIGITAL DESIGN  
GRAPHICS  
TECHNOLOGY

WWW.DDGT.NET

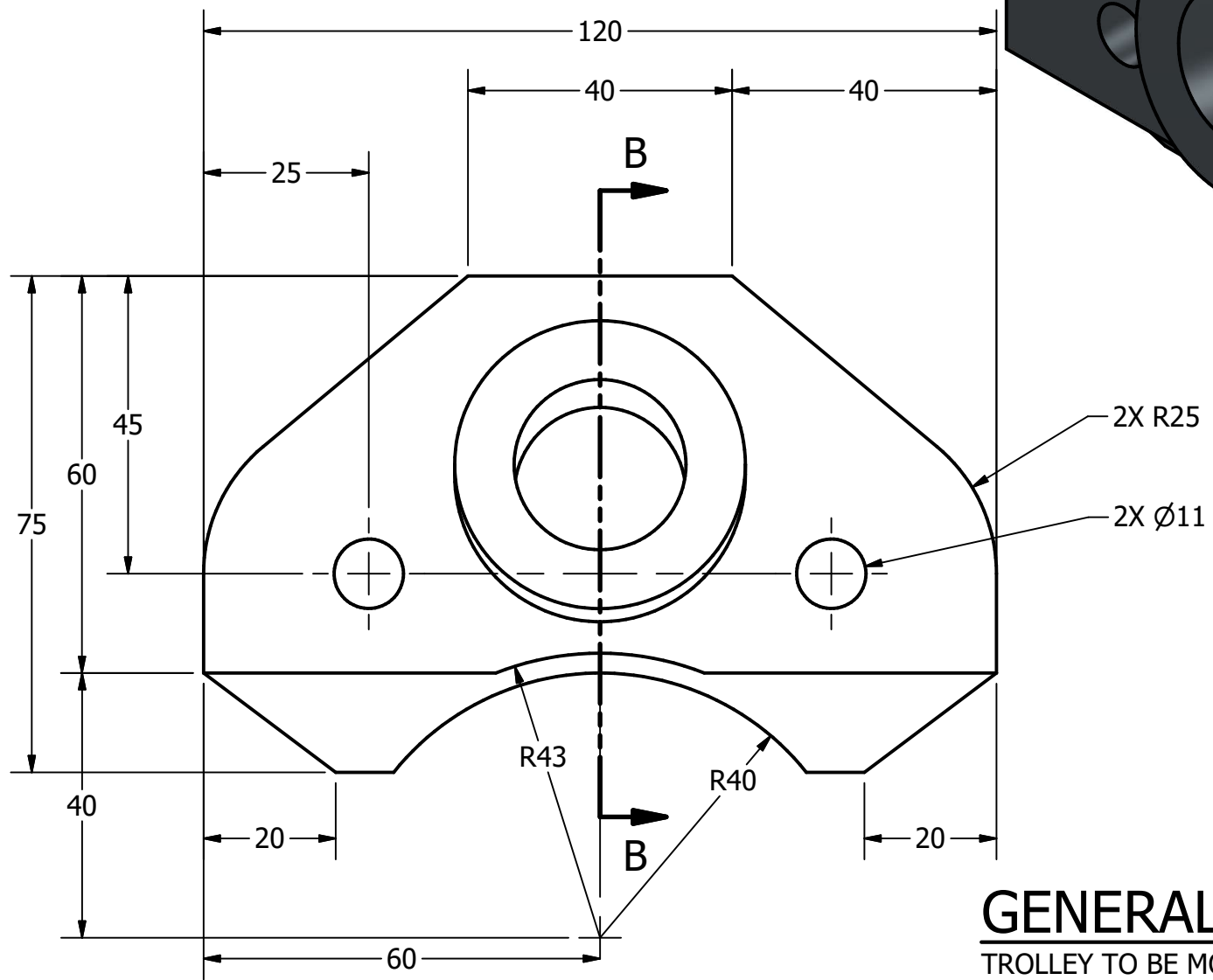
**METRIC**



**AXLE  
SCALE 1 / 2**



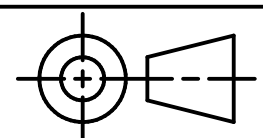
**SECTION B-B  
SCALE 1 : 1**



**GUIDE  
SCALE 1 : 1**

**GENERAL NOTES:**

TROLLEY TO BE MOUNTED ON AN S200 X 34 BEAM  
ALL CHAMFERS ARE 2 X 2 UNLESS OTHERWISE NOTED



TOLERANCES UNLESS SPECIFIED:  
MILLIMETERS:  
WHOLE NUMBER = ±.5  
XX = ±.25  
XXX = ±.12  
ANGLES ±1 DEGREE  
SURFACES 32✓

CLASS: DDGT 120

ASSIGNMENT #: #70

INVENTOR DRAWING NAME:  
TROLLEY

FIG #: 14-85

MANAGER: G. STROMMEN

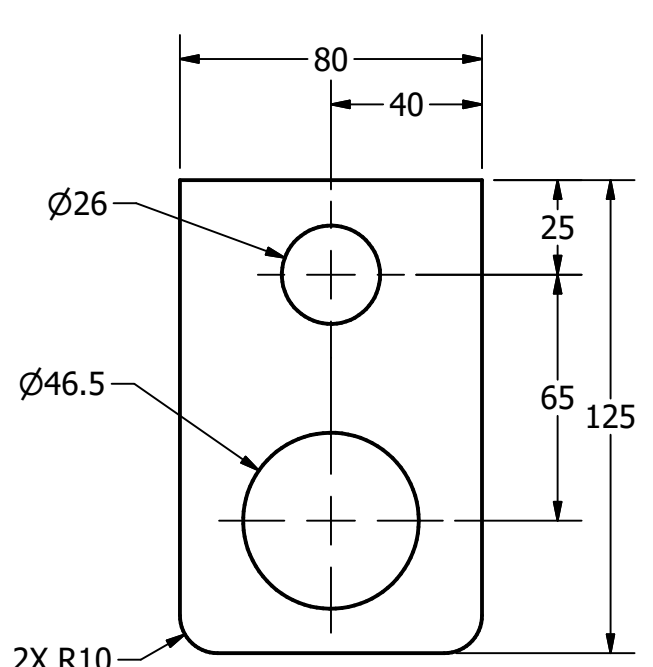
DRAFTER: S.ZEPEDA

DATE: 12/7/2022

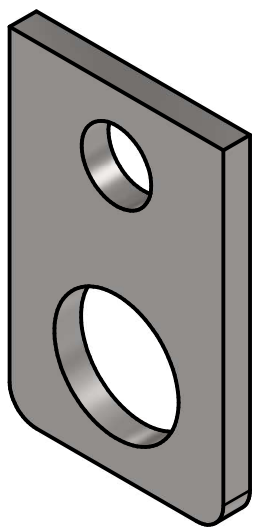
SCALE: AS NOTED

PAGE #: 5 OF 6

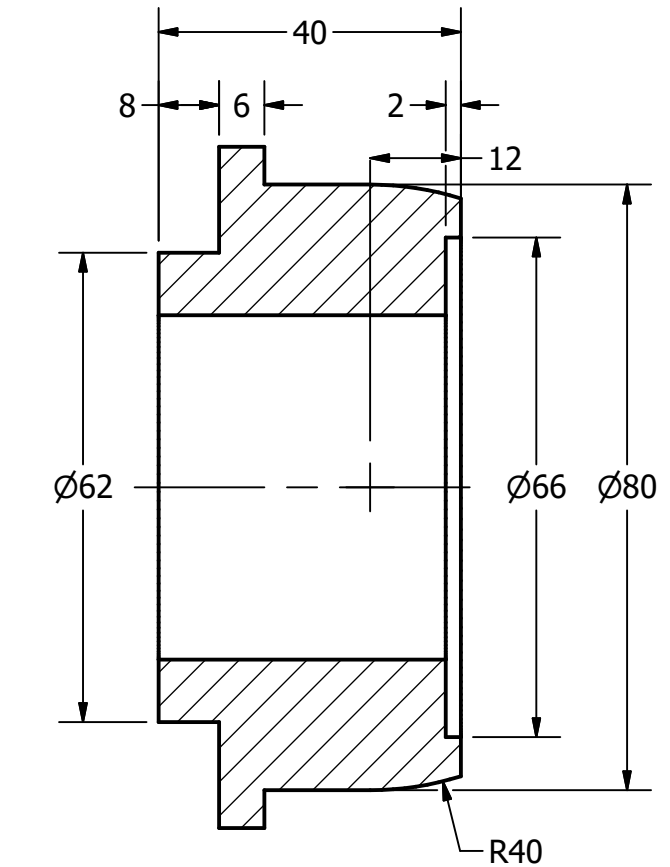




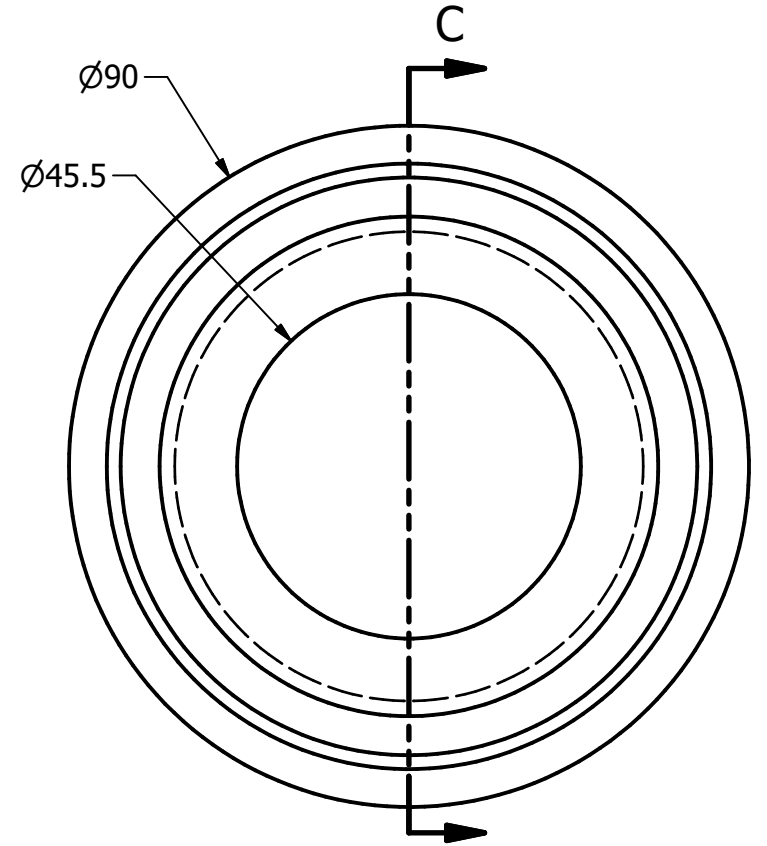
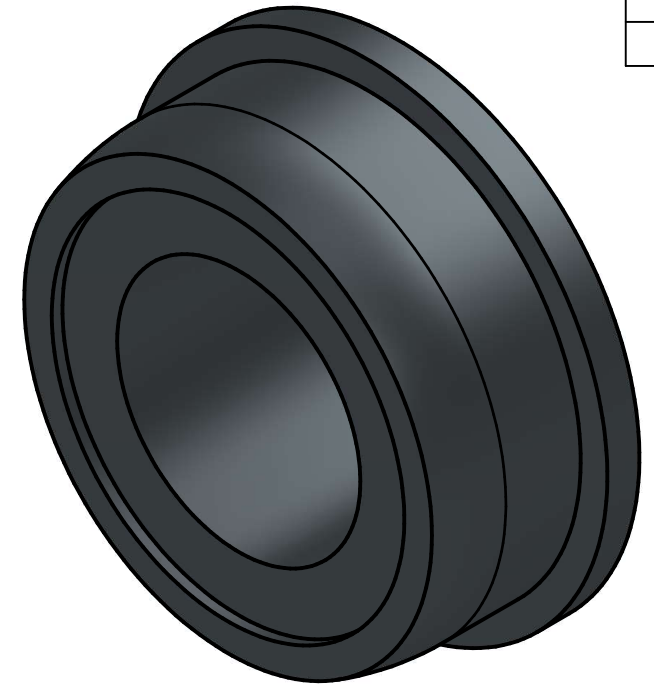
HOOK  
SCALE 1 / 2



METRIC



SECTION C-C  
SCALE 1 : 1



WHEEL  
SCALE 1 : 1

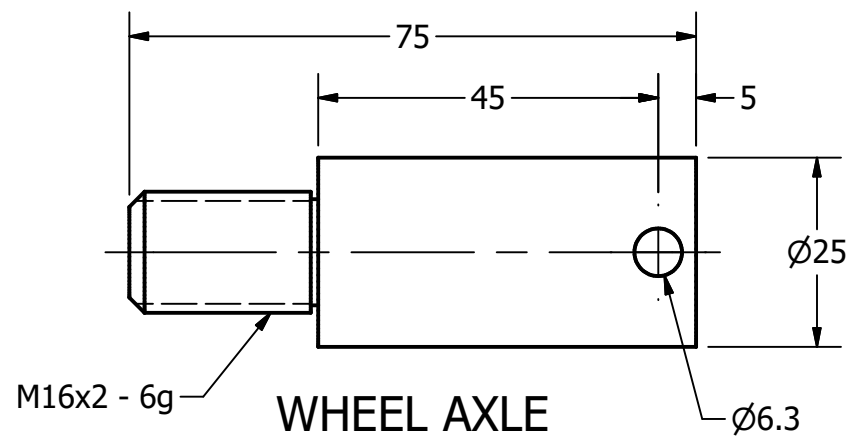
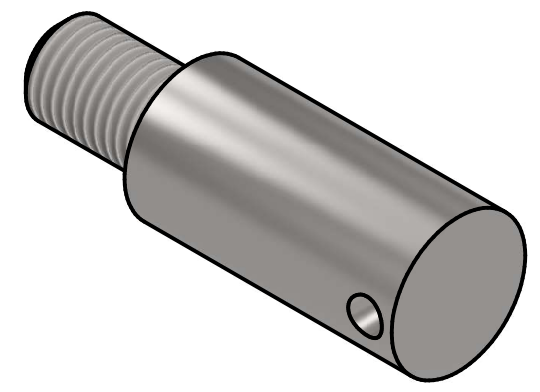
PARTS LIST		
ITEM	QTY	PART NUMBER
3	1	HOOK
5	4	WHEEL
6	4	WHEEL AXLE

**GENERAL NOTES:**

TROLLEY TO BE MOUNTED ON AN S200 X 34 BEAM  
ALL CHAMFERS ARE 2 X 2 UNLESS OTHERWISE NOTED

**LEGEND:**

- ∅ DIAMETER
- R RADIUS
- ° DEGREES

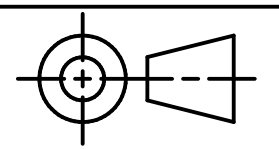


WHEEL AXLE  
SCALE 1 : 1



DIGITAL DESIGN  
GRAPHICS  
TECHNOLOGY

WWW.DDGT.NET



TOLERANCES UNLESS SPECIFIED:  
MILLIMETERS:  
WHOLE NUMBER = ±.5  
XX = ±.25  
XXX = ±.12  
ANGLES ±1 DEGREE  
SURFACES 32✓

CLASS: DDGT 120

ASSIGNMENT #: #70

INVENTOR DRAWING NAME:  
TROLLEY

FIG #: 14-85

MANAGER: G. STROMMEN

DRAFTER: S.ZEPEDA

DATE: 12/7/2022

SCALE: AS NOTED

PAGE #: 6 OF 6