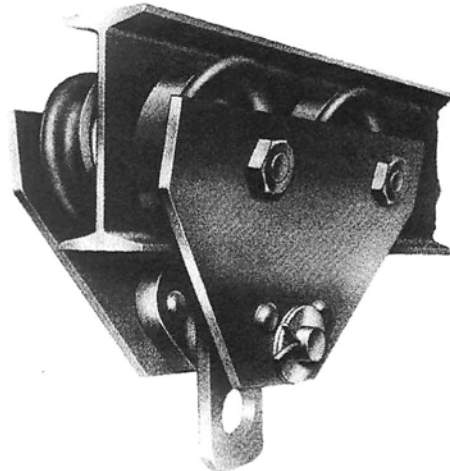
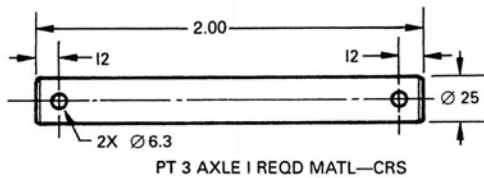


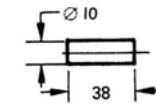
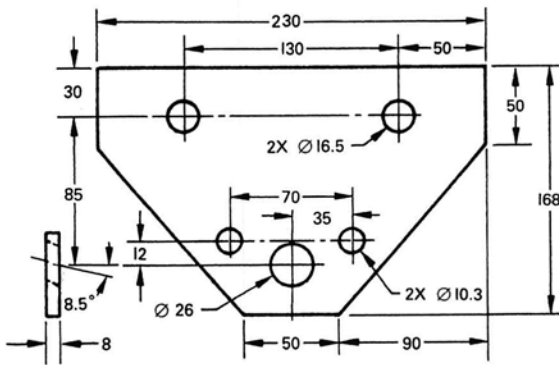
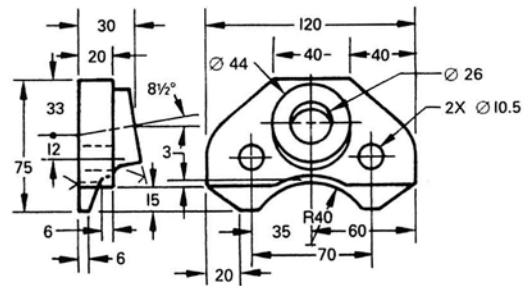
35. On a B (A3) size sheet make a two-view assembly drawing of the trolley shown in Fig. 14-83 mounted on an S200 × 34 beam. Show the side view in half section and place on the drawing the dimensions suitable for a catalog. Scale 1:2. Refer to Fig. 25.6 and Table 25.2 for dimensions of the beam.



- PT 8 ADJUSTING WASHER 26 ID × 44 OD × 4 THK  
12 REQD, MATL—STL
- PT 9 RIVET, BUTTON HEAD, Ø10 × 60 LG, 4 REQD
- PT 10 WASHER 26 ID × 65 OD × 3 THK, 4 REQD
- PT 11 LOCKNUT M16 × 2, 4 REQD  
PREVAILING TORQUE INSERT-TYPE
- PT 12 COTTER PIN Ø6 × 40 LG, 6 REQD



METRIC



44 REQD MATL—CRS  
CASE HARDENING

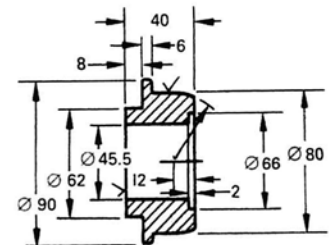
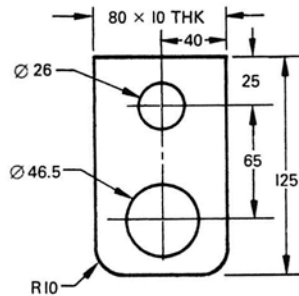
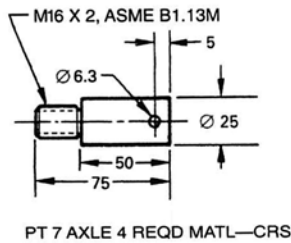


Fig. 14-83 Trolley.