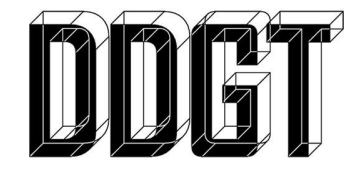
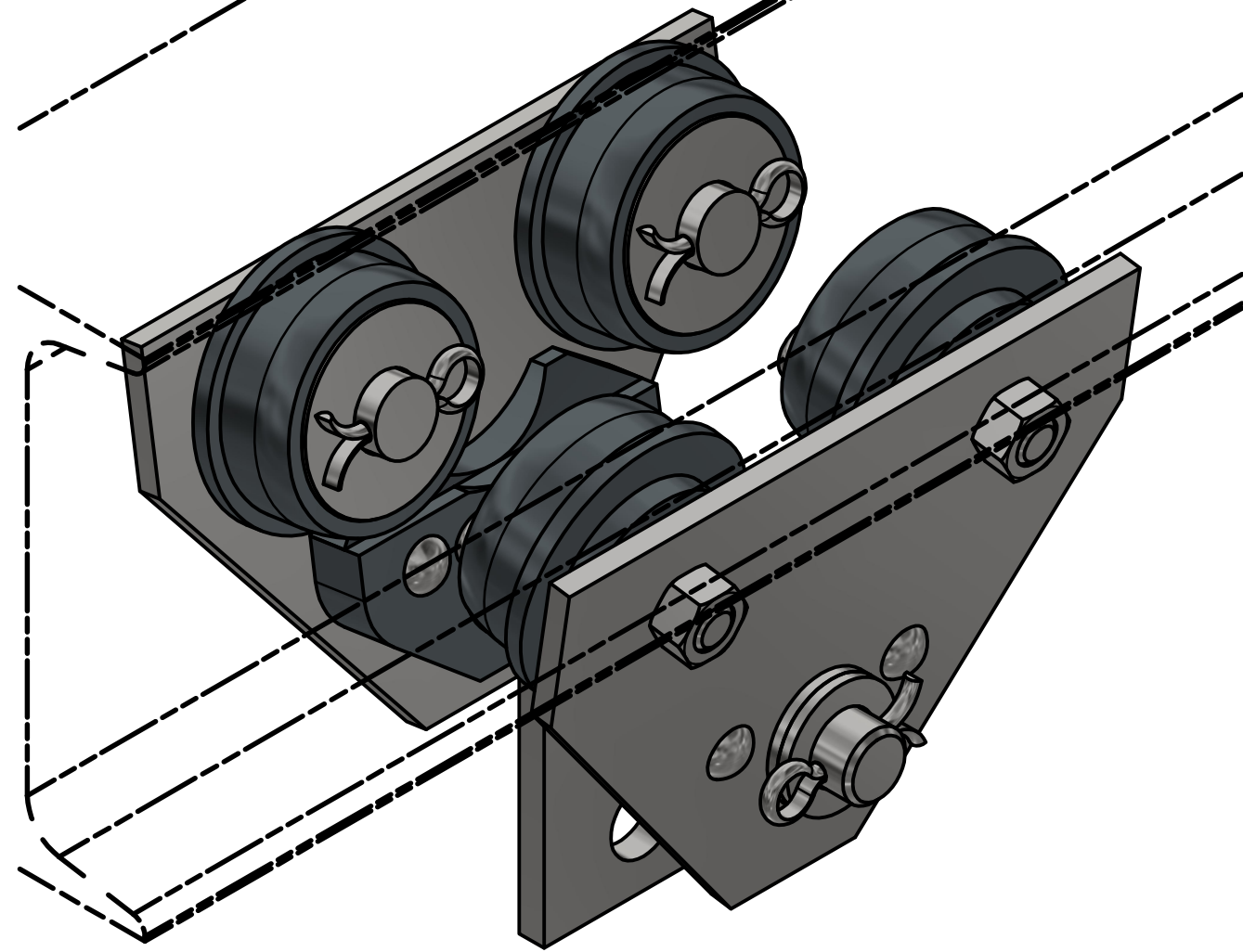


PARTS LIST				
ITEM	QTY	PART NUMBER	MATERIAL	DESCRIPTION
1	2	SIDE PLATE SUB ASSEMBLY		
1.1	1	SIDE PLATE	MILD STEEL	
1.2	1	GUIDE	CAST IRON	
1.3	1	RIVET	STANDARD	BUTTON HEAD, Ø10 BY 65 LONG
2	1	AXLE	COLD ROLLED STEEL	
3	1	HOOK	MILD STEEL	10 THICK
4	44	ROLLER BEARING	COLD ROLLED STEEL	Ø10 X 38 LONG
5	4	WHEEL	CAST IRON	
6	4	WHEEL AXLE	COLD ROLLED STEEL	
7	12	ADJUSTING WASHER	STANDARD	Ø26 ID X Ø44 OD X 4 THICK
8	4	WASHER	STANDARD	Ø26 ID X Ø65 OD X 3 THICK
9	4	LOCKNUT	STANDARD	M16 X 2 (PREVAILING TORQUE INSERT - TYPE)
10	6	COTTER PIN	STANDARD	Ø6 X 40 LONG



DIGITAL DESIGN
GRAPHIC
TECHNOLOGY

WWW.DDGT.NET



METRIC

GENERAL NOTES:

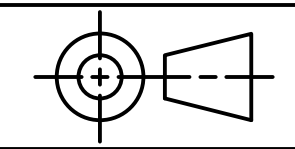
TROLLEY TO BE MOUNT ON AN S200 X 34 BEAM

ALL CHAMFERS ARE 2X2 UNLESS OTHERWISE SPECIFIED

TROLLEY ASSEMBLY
SCALE 1 / 2

LEGEND:

- Ø DIAMETER
- R RADIUS
- ° DEGREES



TOLERANCES UNLESS SPECIFIED
MILLIMETERS:
WHOLE NUMBERS = ±.5
X = ±.25
XX = ±.12
FRACTIONAL ±1/64"
ANGLES ±1 DEGREE
SURFACES ³²✓

CLASS: DDGT 120

ASSIGNMENT NUMBER: 70

INVENTOR DRAWING NAME:
TROLLEY

FIG #: 14-53

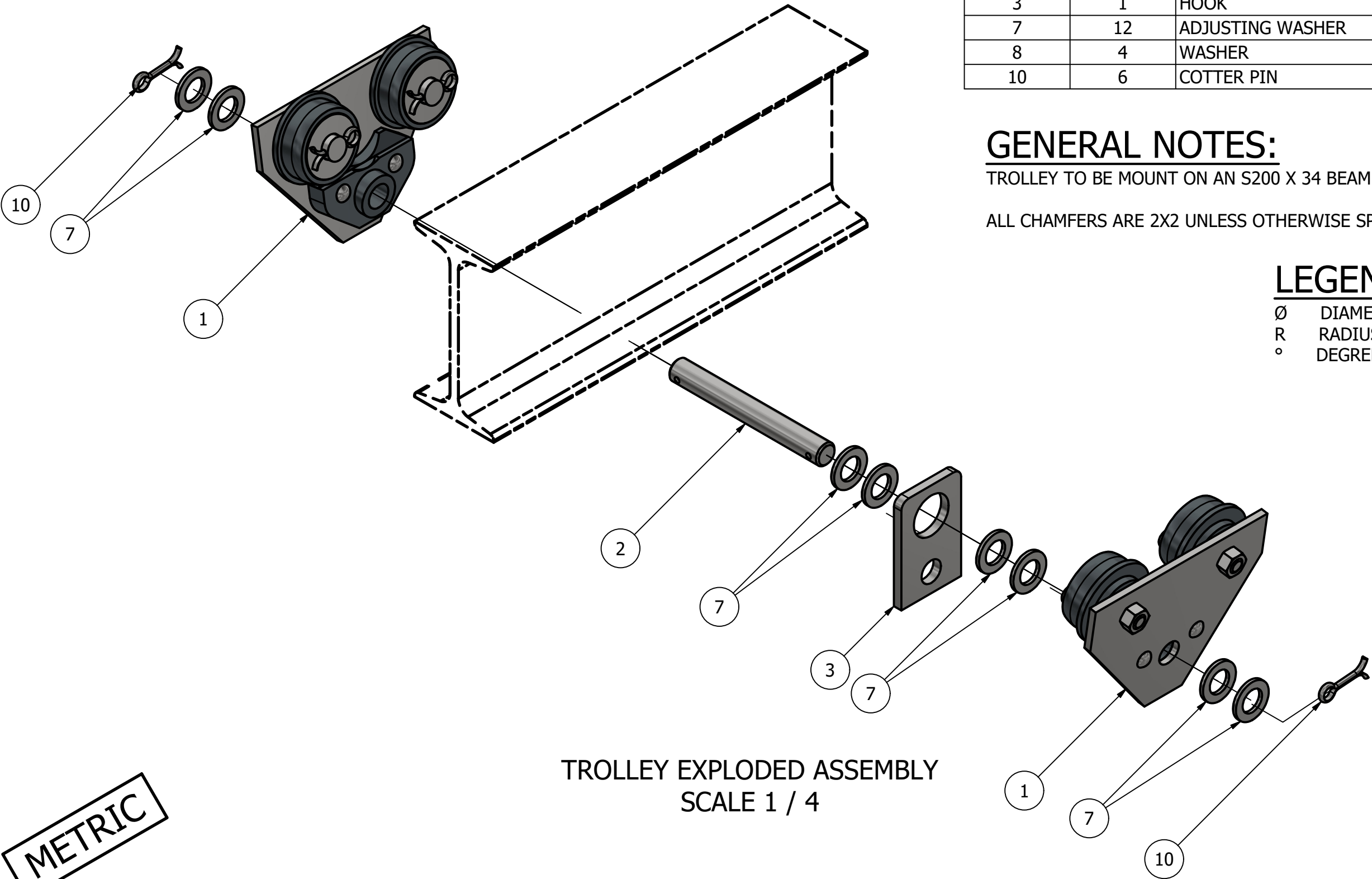
MANAGER: G. STROMMEN

DRAFTER: G.RAMIREZ

DATE: 12/14/2023

SCALE: AS NOTED

PAGE #: 1 OF 6



METRIC

TROLLEY EXPLODED ASSEMBLY
SCALE 1 / 4

PARTS LIST

ITEM	QTY	PART NUMBER
1	2	SIDE PLATE SUB ASSEMBLY
2	1	AXLE
3	1	HOOK
7	12	ADJUSTING WASHER
8	4	WASHER
10	6	COTTER PIN

GENERAL NOTES:

TROLLEY TO BE MOUNT ON AN S200 X 34 BEAM

ALL CHAMFERS ARE 2X2 UNLESS OTHERWISE SPECIFIED

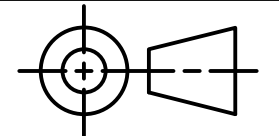
LEGEND:

- ∅ DIAMETER
- R RADIUS
- ° DEGREES



DIGITAL DESIGN
GRAPHIC
TECHNOLOGY

WWW.DDGT.NET



TOLERANCES UNLESS SPECIFIED
MILLIMETERS:
WHOLE NUMBERS = ±.5
X = ±.25
XX = ±.12
FRACTIONAL ±1/64"
ANGLES ±1 DEGREE
SURFACES ³²✓

CLASS: DDGT 120

ASSIGNMENT NUMBER: 70

INVENTOR DRAWING NAME:
TROLLEY

FIG #: 14-53

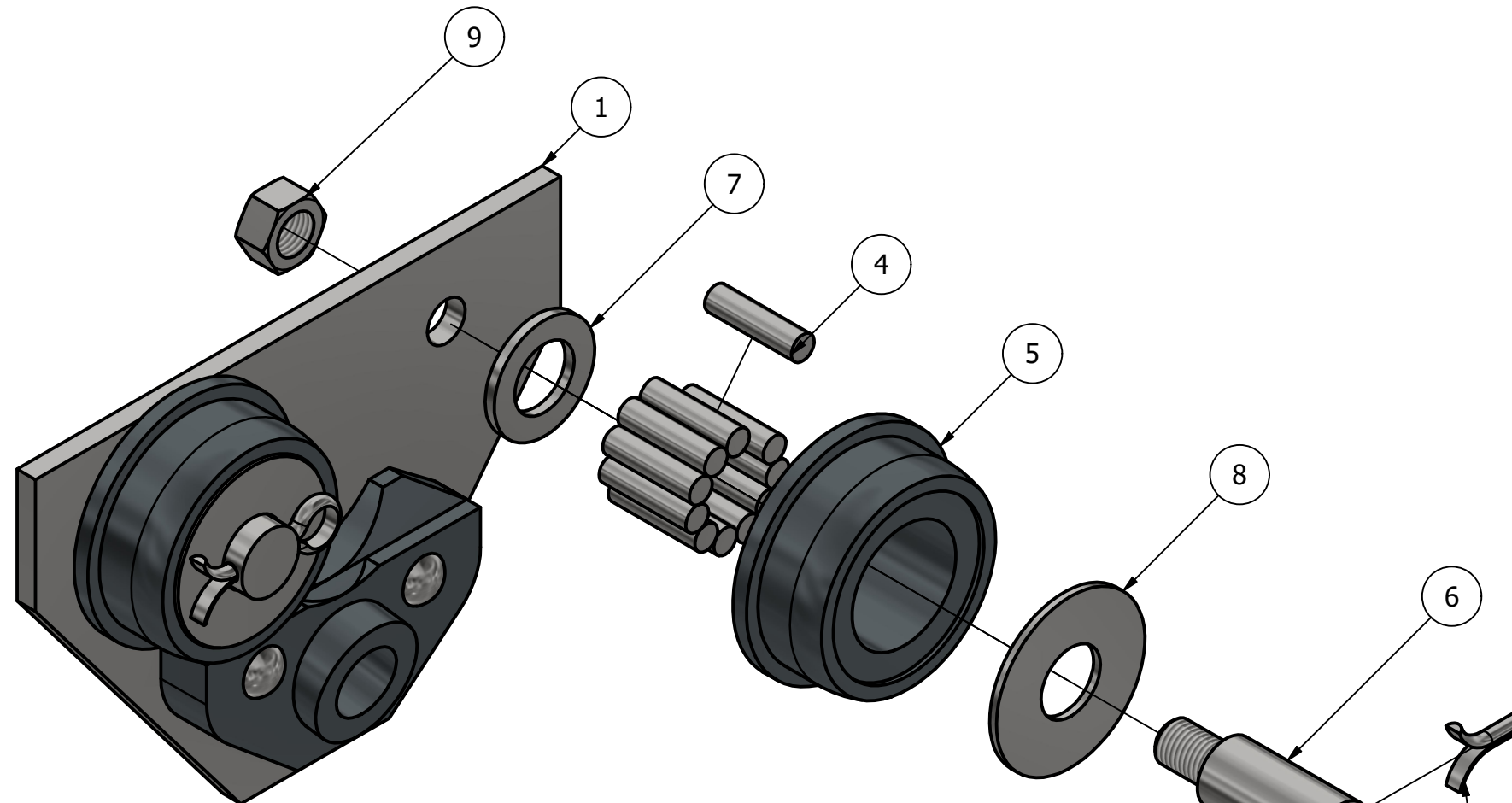
MANAGER: G. STROMMEN

DRAFTER: G.RAMIREZ

DATE: 12/14/2023

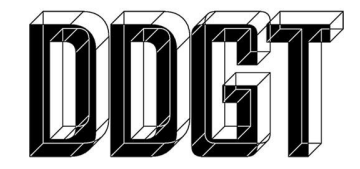
SCALE: AS NOTED

PAGE #: 2 OF 6



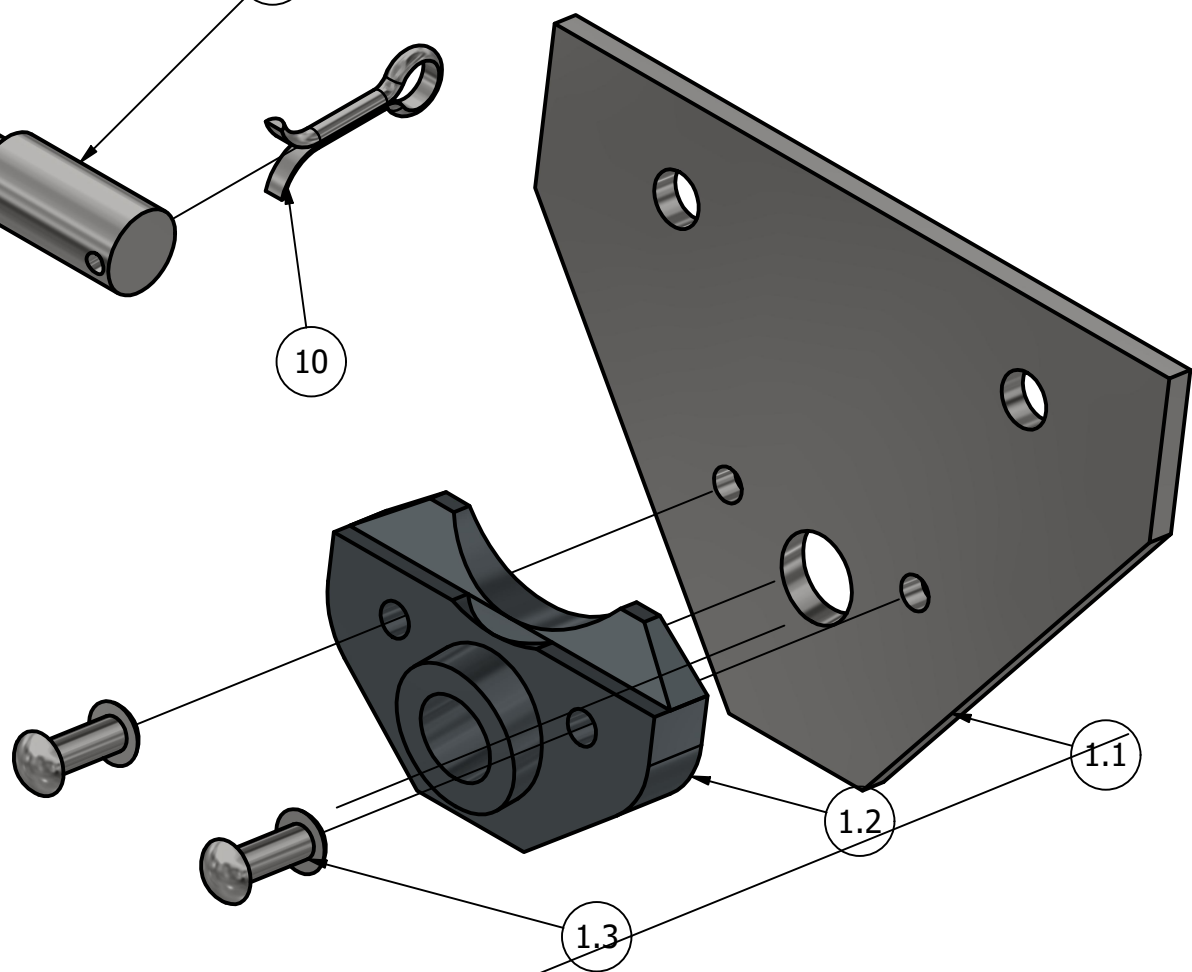
WHEEL SUB ASSEMBLY
SCALE 1 / 2

PARTS LIST		
ITEM	QTY	PART NUMBER
1	2	SIDE PLATE SUB ASSEMBLY
1.1	1	SIDE PLATE
1.2	1	GUIDE
1.3	1	RIVET
4	44	ROLLER BEARING
5	4	WHEEL
6	4	WHEEL AXLE
7	12	ADJUSTING WASHER
8	4	WASHER
9	4	LOCKNUT
10	6	COTTER PIN



DIGITAL DESIGN
GRAPHIC
TECHNOLOGY

WWW.DDGT.NET



SIDE PLATE SUB ASSEMBLY
SCALE 1 / 2

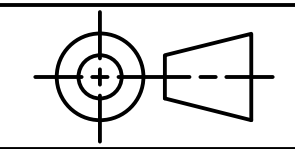
METRIC

LEGEND:

- ∅ DIAMETER
- R RADIUS
- ° DEGREES

GENERAL NOTES:

TROLLEY TO BE MOUNT ON AN S200 X 34 BEAM
ALL CHAMFERS ARE 2X2 UNLESS OTHERWISE SPECIFIED



TOLERANCES UNLESS SPECIFIED
MILLIMETERS:
WHOLE NUMBERS = ±.5
X = ±.25
XX = ±.12
FRACTIONAL ±1/64"
ANGLES ±1 DEGREE
SURFACES ³²✓

CLASS: DDGT 120

ASSIGNMENT NUMBER: 70

INVENTOR DRAWING NAME:
TROLLEY

FIG #: 14-53

MANAGER: G. STROMMEN

DRAFTER: G. RAMIREZ

DATE: 12/14/2023

SCALE: AS NOTED

PAGE #: 3 OF 6

GENERAL NOTES:

TROLLEY TO BE MOUNT ON AN S200 X 34 BEAM

ALL CHAMFERS ARE 2X2 UNLESS OTHERWISE SPECIFIED

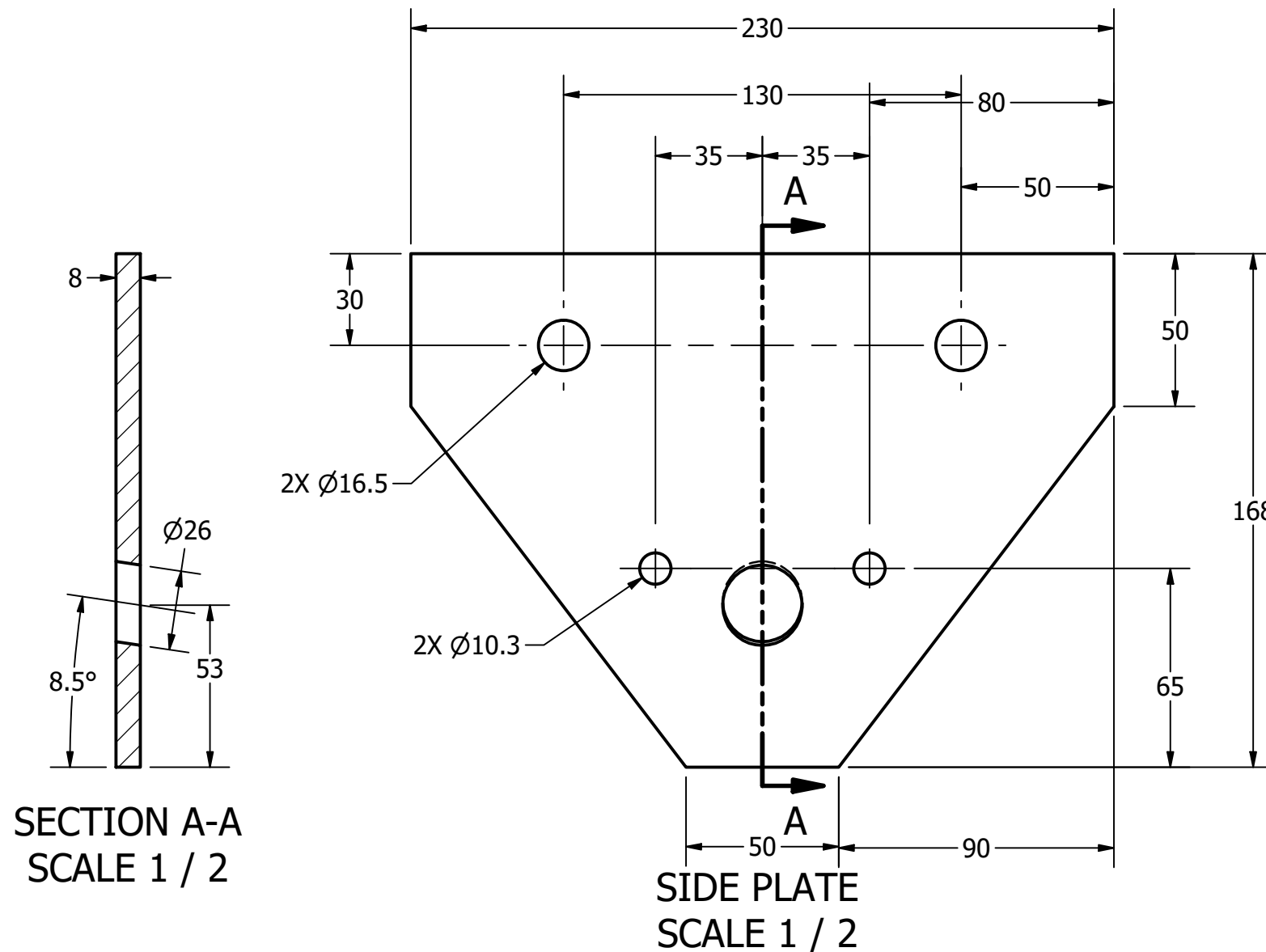
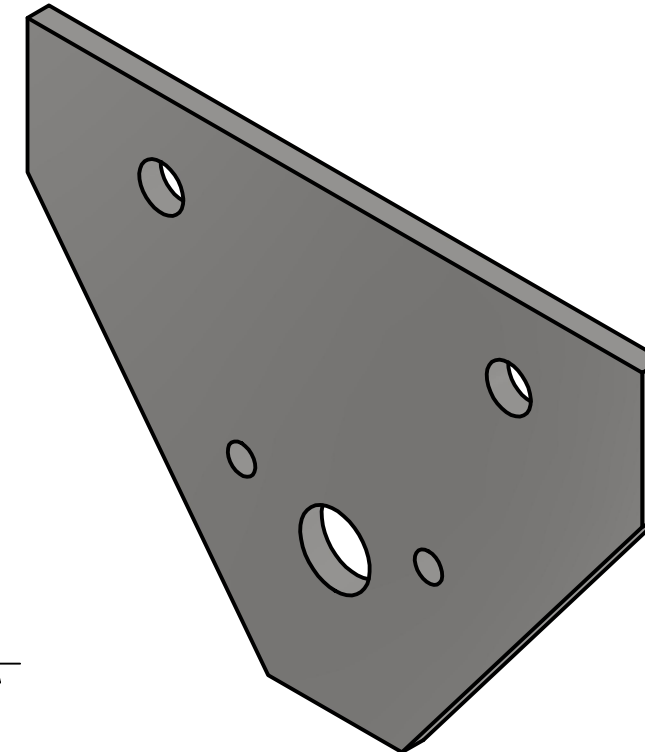
PARTS LIST

ITEM	QTY	PART NUMBER
1.1	1	SIDE PLATE



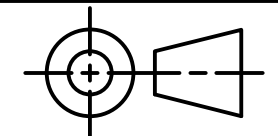
DIGITAL DESIGN
GRAPHIC
TECHNOLOGY

WWW.DDGT.NET



LEGEND:

∅ DIAMETER
R RADIUS
° DEGREES



TOLERANCES UNLESS SPECIFIED
MILLIMETERS:
WHOLE NUMBERS = ±.5
X = ±.25
XX = ±.12
FRACTIONAL ±1/64"
ANGLES ±1 DEGREE
SURFACES ³²✓

CLASS: DDGT 120

ASSIGNMENT NUMBER: 70

INVENTOR DRAWING NAME:
TROLLEY

FIG #: 14-53

MANAGER: G. STROMMEN

DRAFTER: G. RAMIREZ

DATE: 12/14/2023

SCALE: AS NOTED

PAGE #: 4 OF 6

METRIC

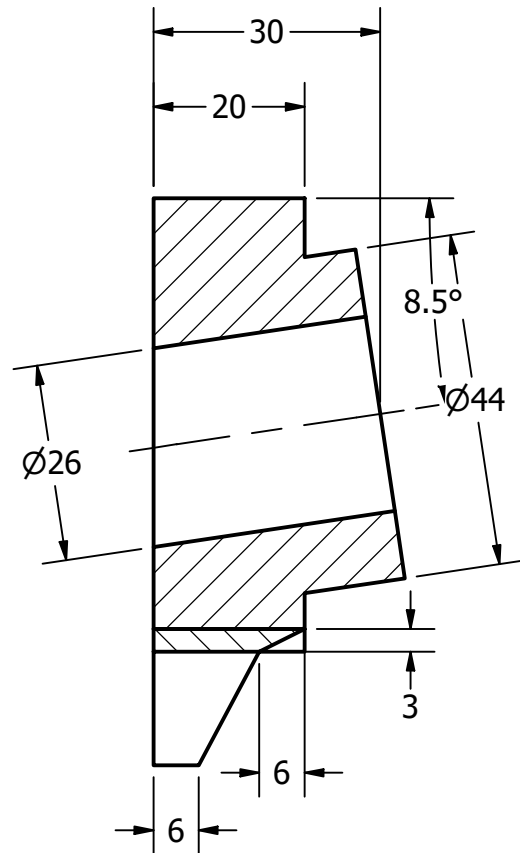
LEGEND:

- ∅ DIAMETER
- R RADIUS
- ° DEGREES

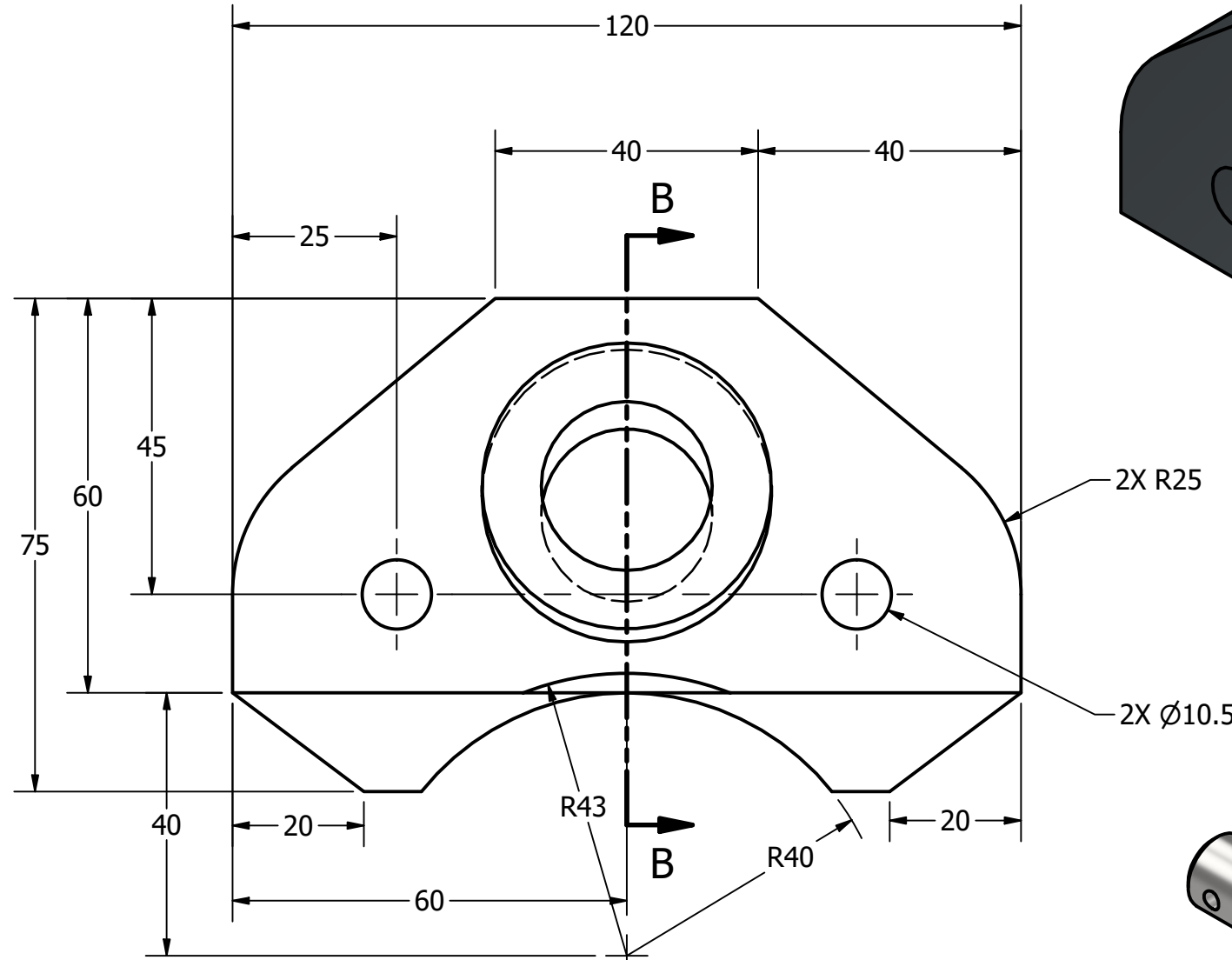
GENERAL NOTES:

TROLLEY TO BE MOUNT ON AN S200 X 34 BEAM

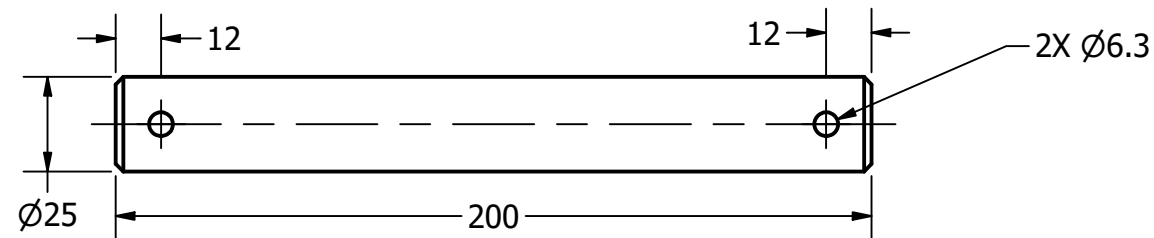
ALL CHAMFERS ARE 2X2 UNLESS OTHERWISE SPECIFIED



SECTION B-B
SCALE 1 : 1



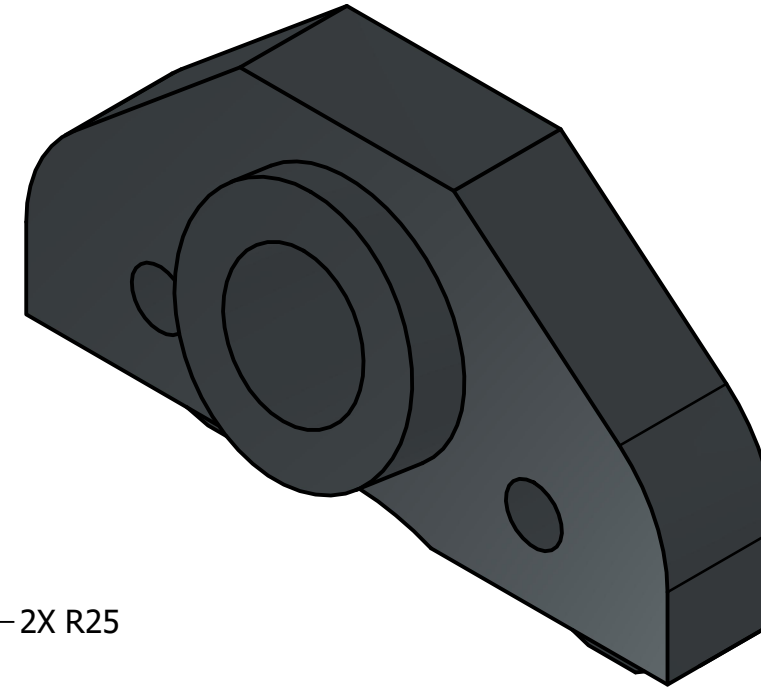
GUIDE
SCALE 1 : 1



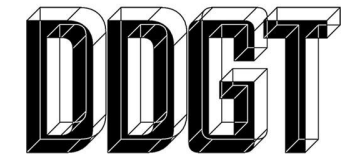
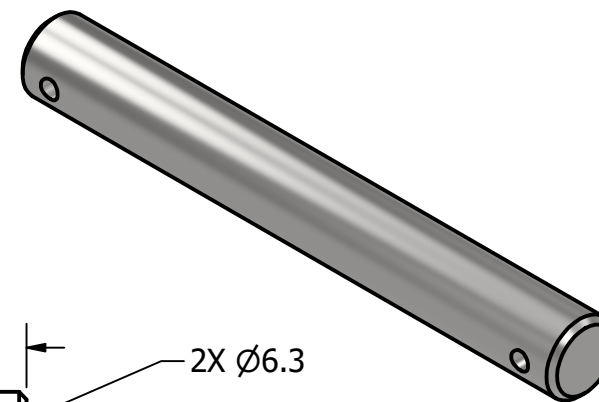
AXLE
SCALE 1 / 2

PARTS LIST

ITEM	QTY	PART NUMBER
1.2	1	GUIDE

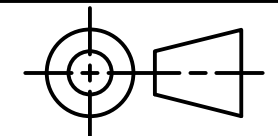


METRIC



DIGITAL DESIGN
GRAPHIC
TECHNOLOGY

WWW.DDGT.NET



TOLERANCES UNLESS SPECIFIED
MILLIMETERS:
WHOLE NUMBERS = ±.5
X = ±.25
XX = ±.12
FRACTIONAL ±1/64"
ANGLES ±1 DEGREE
SURFACES ³²✓

CLASS: DDGT 120

ASSIGNMENT NUMBER: 70

INVENTOR DRAWING NAME:
TROLLEY

FIG #: 14-53

MANAGER: G. STROMMEN

DRAFTER: G. RAMIREZ

DATE: 12/14/2023

SCALE: AS NOTED

PAGE #: 5 OF 6

GENERAL NOTES:

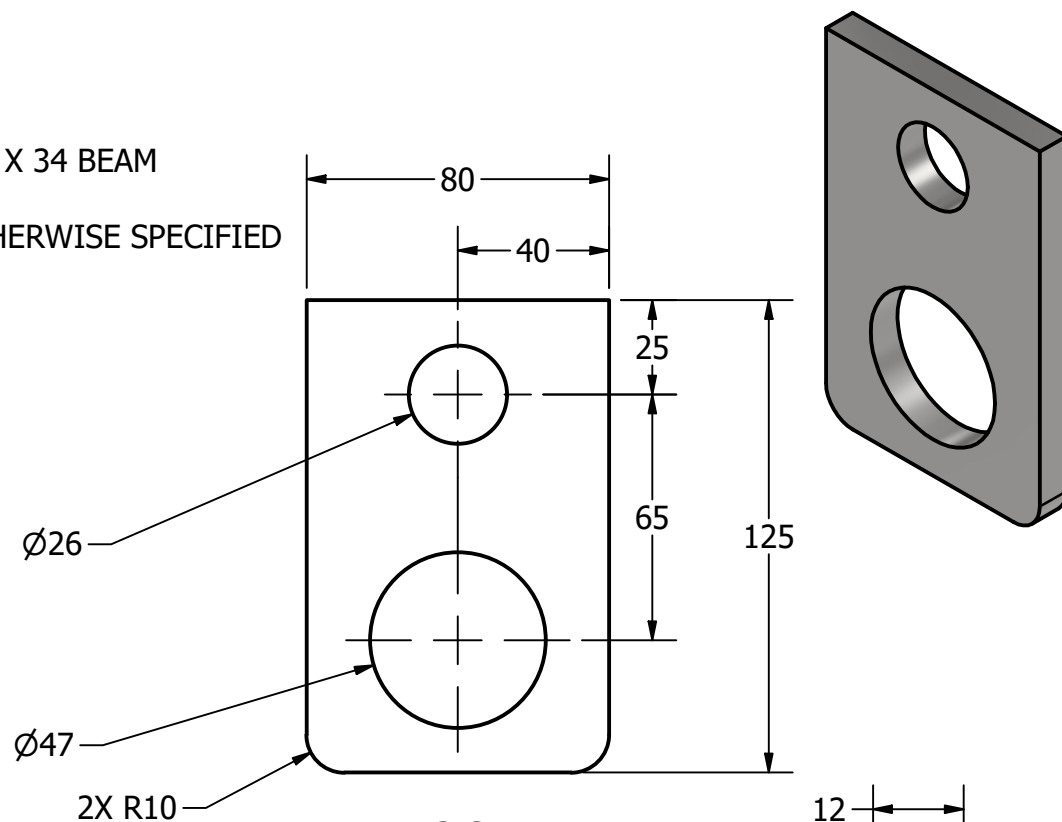
TROLLEY TO BE MOUNT ON AN S200 X 34 BEAM

ALL CHAMFERS ARE 2X2 UNLESS OTHERWISE SPECIFIED

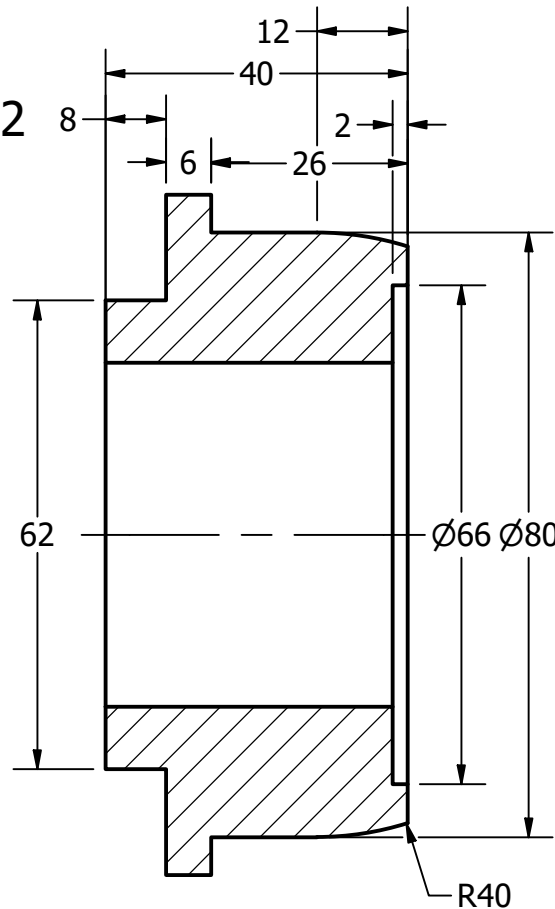
LEGEND:

- ∅ DIAMETER
- R RADIUS
- ° DEGREES

METRIC

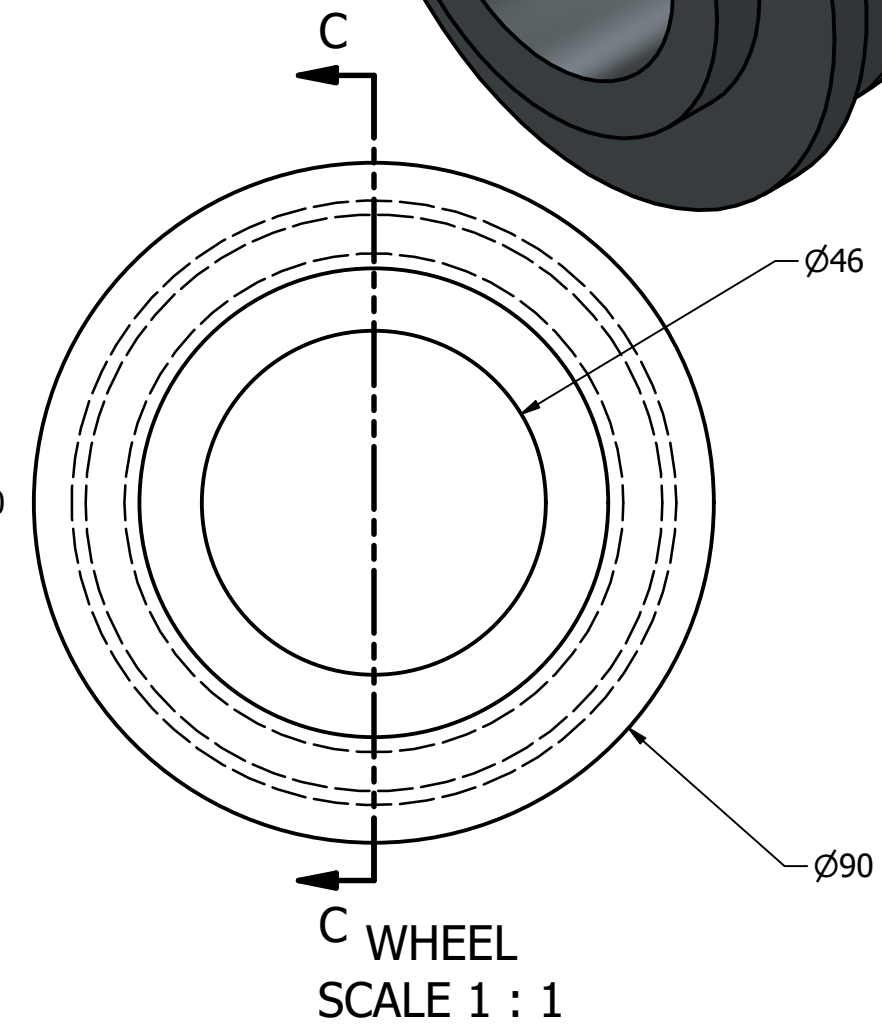
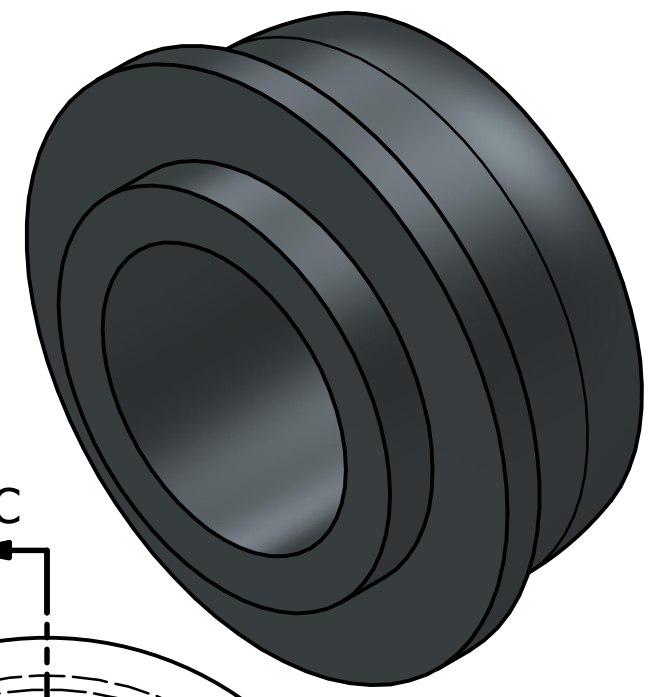


HOOK
SCALE 1 / 2

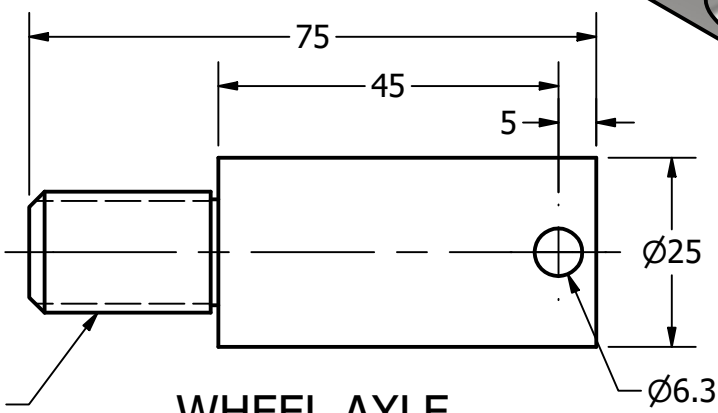
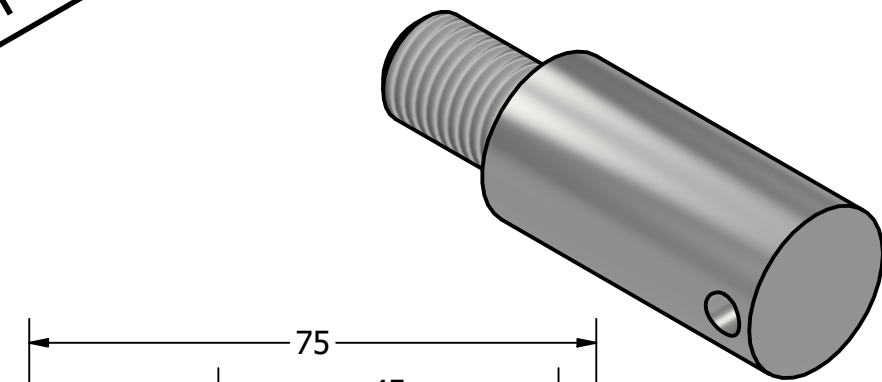


SECTION C-C
SCALE 1 : 1

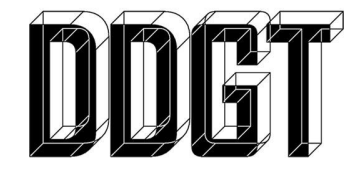
PARTS LIST		
ITEM	QTY	PART NUMBER
3	1	HOOK
5	4	WHEEL
6	4	WHEEL AXLE



C WHEEL
SCALE 1 : 1

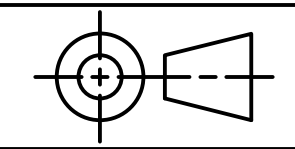


WHEEL AXLE
SCALE 1 : 1



DIGITAL DESIGN
GRAPHIC
TECHNOLOGY

WWW.DDGT.NET



TOLERANCES UNLESS SPECIFIED
MILLIMETERS:
WHOLE NUMBERS = ±.5
X = ±.25
XX = ±.12
FRACTIONAL ±1/64"
ANGLES ±1 DEGREE
SURFACES ³²✓

CLASS: DDGT 120

ASSIGNMENT NUMBER: 70

INVENTOR DRAWING NAME:
TROLLEY

FIG #: 14-53

MANAGER: G. STROMMEN

DRAFTER: G. RAMIREZ

DATE: 12/14/2023

SCALE: AS NOTED

PAGE #: 6 OF 6