

DIGITAL DESIGN  
GRAPHICS  
TECHNOLOGY

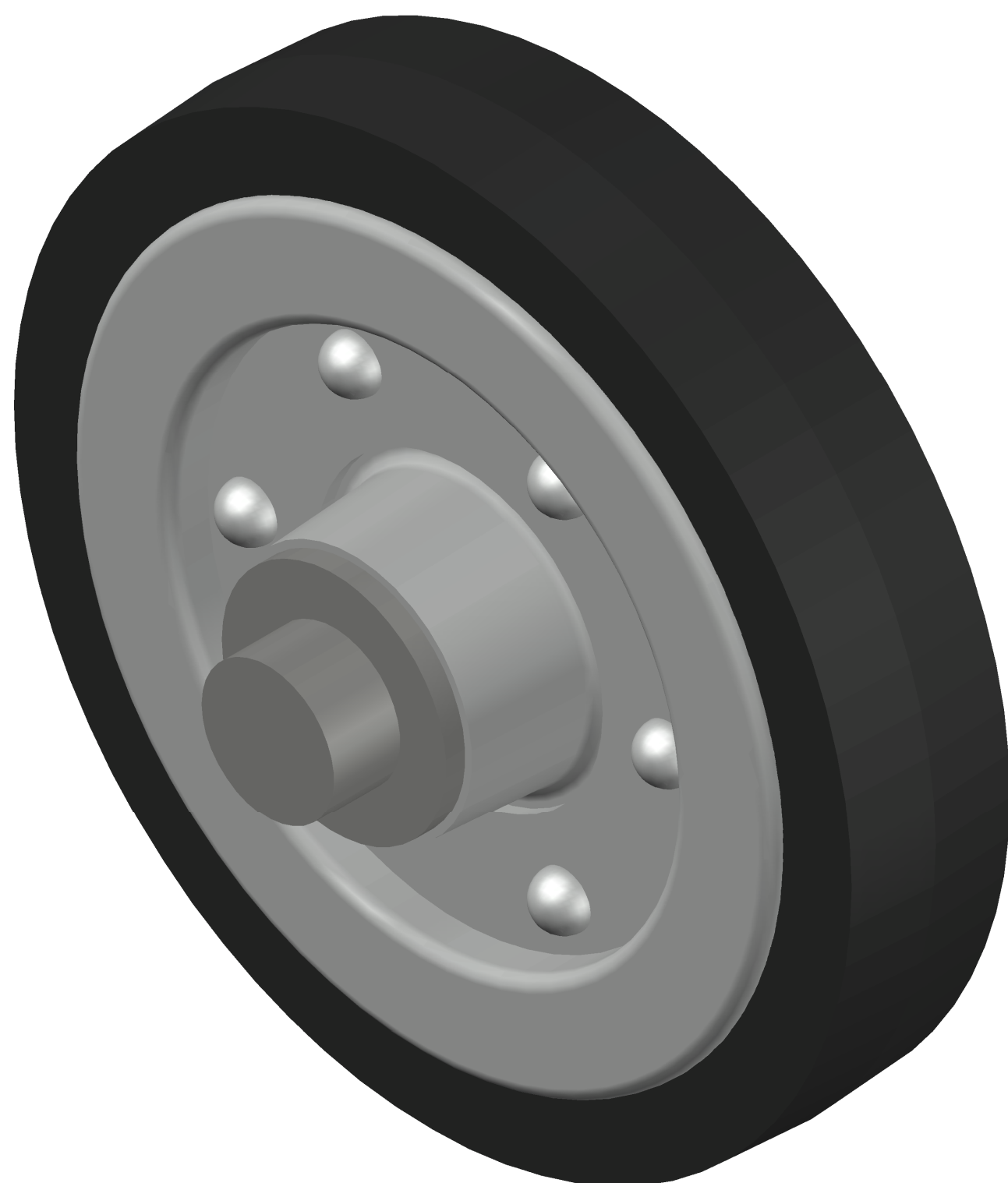
WWW.DDGT.NET

GENERAL NOTES:  
ALL FILLETS HAVE  
R.12" UNLESS  
OTHERWISE NOTED.  
ALL CHAMFERS ARE  
.06" X 45° UNLESS  
OTHERWISE NOTED.

### PARTS LIST

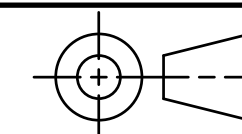
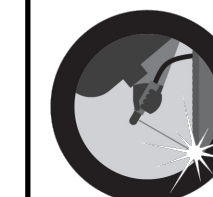
ITEM	QTY.	PART NAME	MATERIAL	DESCRIPTION
1	1	AXLE	STEEL	
2	1	BUSHING	BRONZE	OILLESS
3	1	HUB	ALUMINUM	
4	1	COLLAR	ALUMINUM	
5	2	HUB RING	ALUMINUM	.12" UNIFORM THICKNESS
6	1	WHEEL	HARD RUBBER	
7	6	RIVETS	STANDARD	Ø.31, 1.00" INSIDE LENGTH, EQUALLY SPACED
8	2	WASHERS	STANDARD	I.D. 1.00", O.D. 2.12", .18" THICK
9	1	SPRING PIN	STANDARD	Ø.25, 1.875" LONG

WHEEL ASSEMBLY



WHEEL ASSEMBLY  
(ALTERNATE VIEW)

**WEEKEND WARRIOR**  
FABRICATION AND DESIGN  
Metal Fabricator - Designer - Machinist  
Jonathan K. Jordan  
jonathankjordan2@gmail.com  
"Weekend Hours, Professional Results"  
Trailer Repair - Custom Built Projects - Shade Structures  
Steel - Aluminum - Stainless  
www.ddgt.net/StudentPages/jordan



TOLERANCES UNLESS SPECIFIED:  
DECIMAL INCHES:  
X = ±.020  
XX = ±.010  
XXX = ±.005  
FRACTIONAL ±1/64"  
ANGLES ±1 DEGREE  
SURFACES 32/

CLASS: DDGT 121

ASSIGNMENT #: 09

AUTOCAD DRAWING NAME:  
WHEEL ASSEM.

FIG #: 11-55

MANAGER: G. STROMMEN

DRAFTER: J. JORDAN

DATE: 2/24/2026

SCALE: 1:1

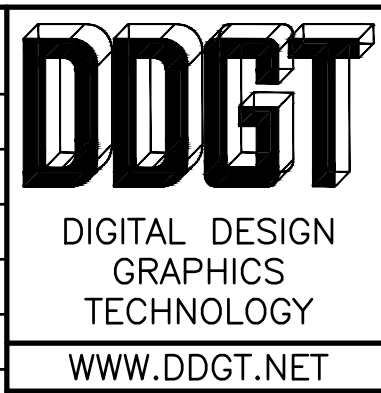
PAGE #: 1 OF 3

REV #	DATE	DESCRIPTION	APPROVED BY	PAGE #
3	2/16/2026	INSIDE DIAMETER OF HUB RING CHANGED FROM Ø2.80" TO Ø2.70"	G. STROMMEN	3
2	2/16/2026	CENTERLINE DIAMETER FOR RIVET PATTERN CHANGED FROM Ø3.50" TO Ø3.94"	G. STROMMEN	3
1	2/16/2026	TAPER ANGLE ON WHEEL CHANGED FROM 5° TO 3.5°	G. STROMMEN	3

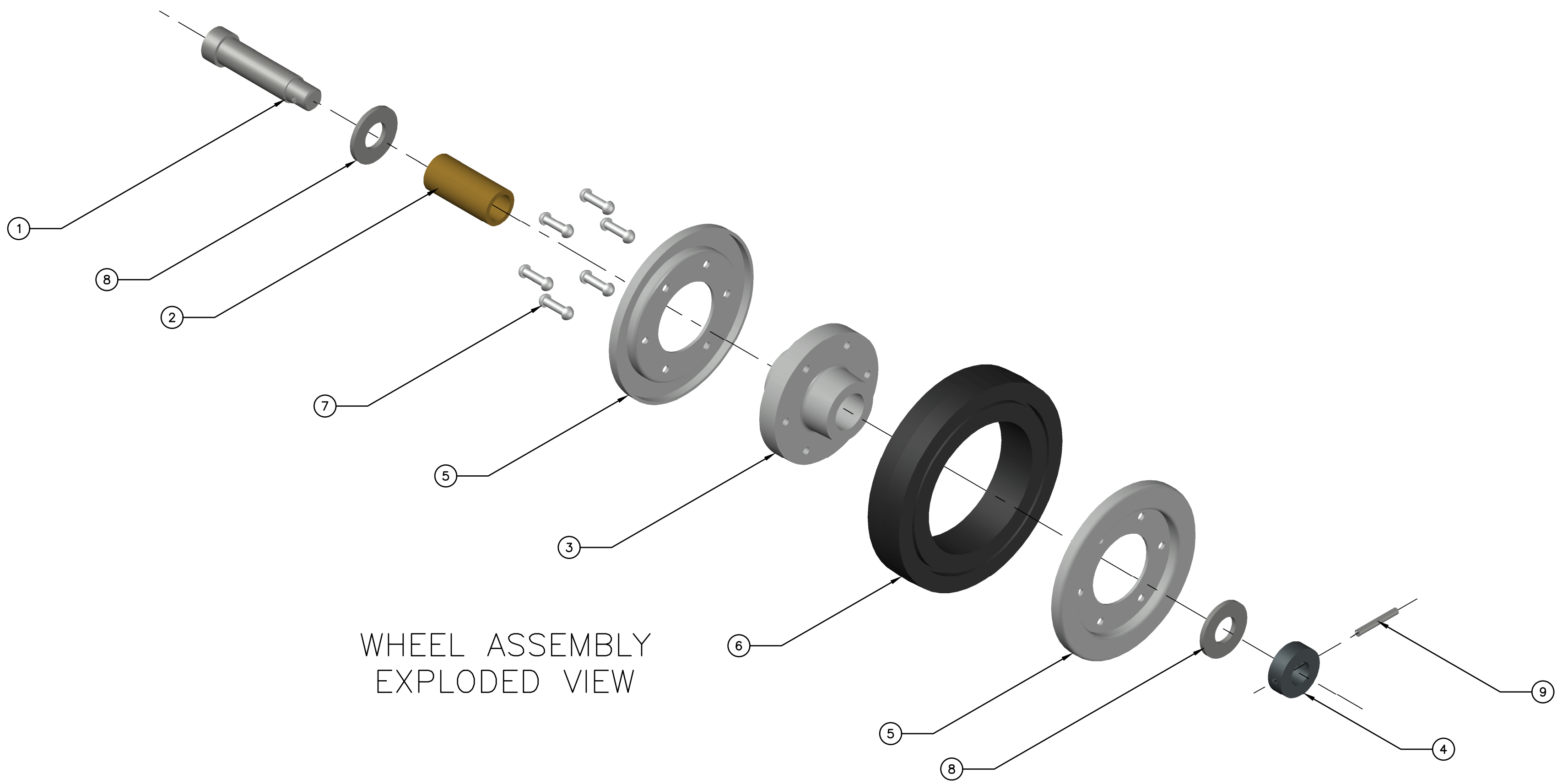
REVISION TABLE

LEGEND	
SYMBOL	DESCRIPTION
Ø	DIAMETER
R	RADIUS
°	DEGREES

PARTS LIST		
ITEM	QTY.	PART NAME
1	1	AXLE
2	1	BUSHING
3	1	HUB
4	1	COLLAR
5	2	HUB RING
6	1	WHEEL
7	6	RIVETS
8	2	WASHERS
9	1	SPRING PIN

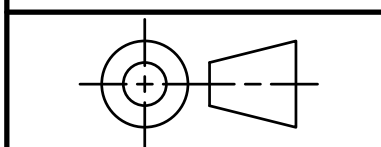


GENERAL NOTES:  
 ALL FILLETS HAVE R.12" UNLESS OTHERWISE NOTED.  
 ALL CHAMFERS ARE .06" X 45° UNLESS OTHERWISE NOTED.



WHEEL ASSEMBLY  
EXPLODED VIEW

**WEEKEND WARRIOR**  
 FABRICATION AND DESIGN  
 Metal Fabricator - Designer - Machinist  
 Jonathan K. Jordan  
 jonathankjordan2@gmail.com  
 "Weekend Hours, Professional Results"  
 Trailer Repair - Custom Built Projects - Shade Structures  
 Steel - Aluminum - Stainless  
 www.ddgt.net/StudentPages/jordan

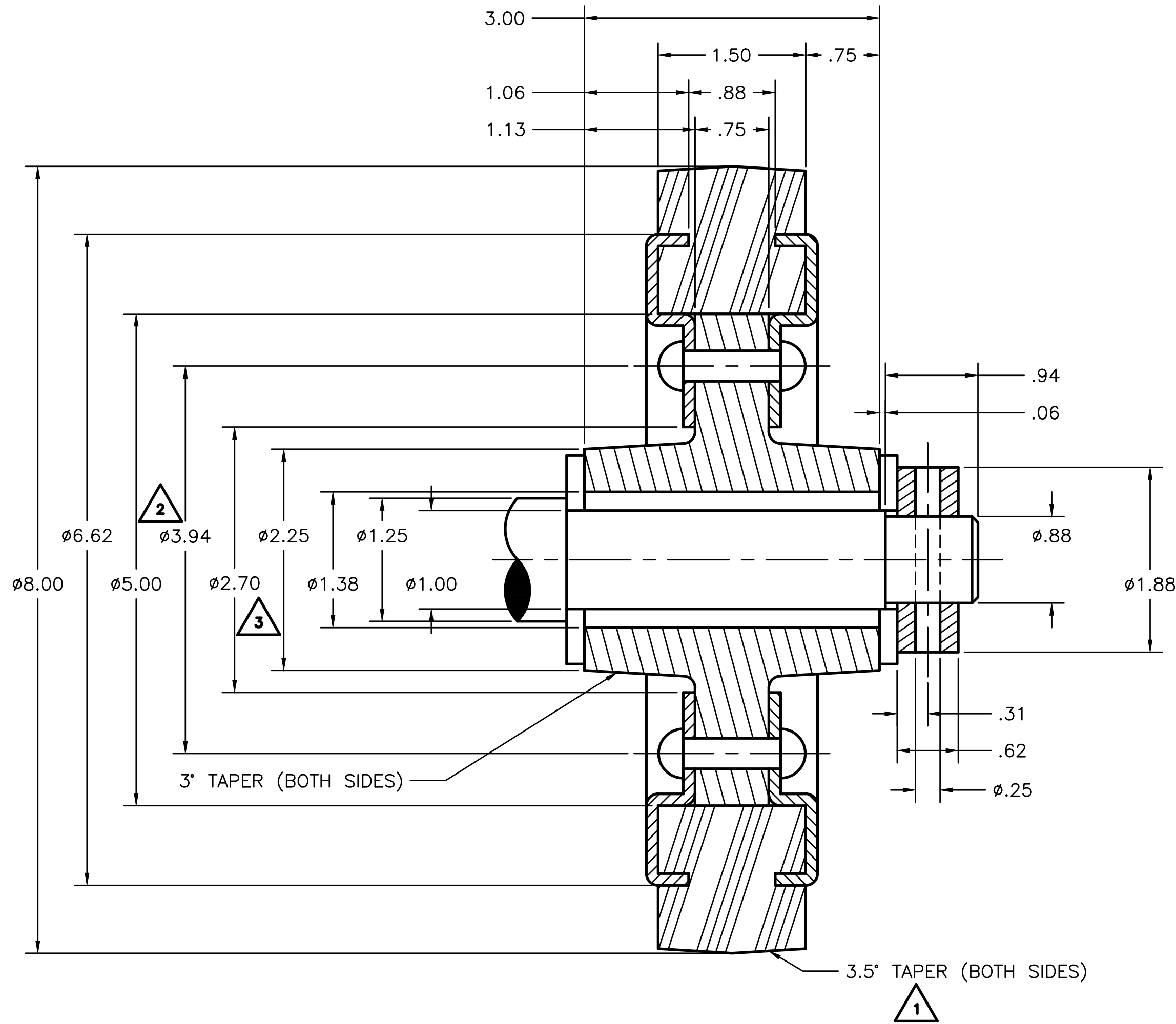


TOLERANCES UNLESS SPECIFIED:  
 DECIMAL INCHES:  
 X = ±.020  
 XX = ±.010  
 XXX = ±.005  
 FRACTIONAL ±1/64"  
 ANGLES ±1 DEGREE  
 SURFACES 32

CLASS: DDGT 121  
 ASSIGNMENT #: 09  
 AUTOCAD DRAWING NAME:  
 WHEEL ASSEM.

LEGEND	
SYMBOL	DESCRIPTION
∅	DIAMETER
R	RADIUS
°	DEGREES

FIG #: 11-55  
 MANAGER: G. STROMMEN  
 DRAFTER: J. JORDAN  
 DATE: 2/24/2026  
 SCALE: 1:3  
 PAGE #: 2 OF 3



WHEEL ASSEMBLY  
SECTION VIEW

PARTS LIST

ITEM	QTY.	PART NAME
1	1	AXLE
2	1	BUSHING
3	1	HUB
4	1	COLLAR
5	2	HUB RING
6	1	WHEEL
7	6	RIVETS
8	2	WASHERS
9	1	SPRING PIN



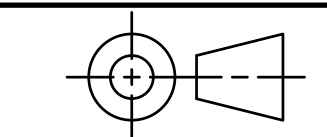
DIGITAL DESIGN  
GRAPHICS  
TECHNOLOGY

WWW.DDGT.NET

GENERAL NOTES:

ALL FILLETS HAVE  
R.12" UNLESS  
OTHERWISE NOTED.  
ALL CHAMFERS ARE  
.06" X 45° UNLESS  
OTHERWISE NOTED.

**WEEKEND WARRIOR**  
FABRICATION AND DESIGN  
Metal Fabricator - Designer - Machinist  
Jonathan K. Jordan  
jonathankjordan2@gmail.com  
"Weekend Hours, Professional Results"  
Trailer Repair - Custom Built Projects - Shade Structures  
Steel - Aluminum - Stainless  
www.ddgt.net/StudentPages/jordan



TOLERANCES UNLESS SPECIFIED:  
DECIMAL INCHES:  
X = ±.020  
XX = ±.010  
XXX = ±.005  
FRACTIONAL ±1/64"  
ANGLES ±1 DEGREE  
SURFACES 32/

CLASS: DDGT 121

ASSIGNMENT #: 09

AUTOCAD DRAWING NAME:  
WHEEL ASSEM.

FIG #: 11-55

MANAGER: G. STROMMEN

DRAFTER: J. JORDAN

DATE: 2/24/2026

SCALE: 1:1

PAGE #: 3 OF 3

LEGEND	
SYMBOL	DESCRIPTION
$\phi$	DIAMETER
R	RADIUS
°	DEGREES

REV #	DATE	DESCRIPTION	APPROVED BY
3	2/16/2026	INSIDE DIAMETER OF HUB RING CHANGED FROM $\phi 2.80$ " TO $\phi 2.70$ "	G. STROMMEN
2	2/16/2026	CENTERLINE DIAMETER FOR RIVET PATTERN CHANGED FROM $\phi 3.50$ " TO $\phi 3.94$ "	G. STROMMEN
1	2/16/2026	TAPER ANGLE ON WHEEL CHANGED FROM 5° TO 3.5°	G. STROMMEN

REVISION TABLE