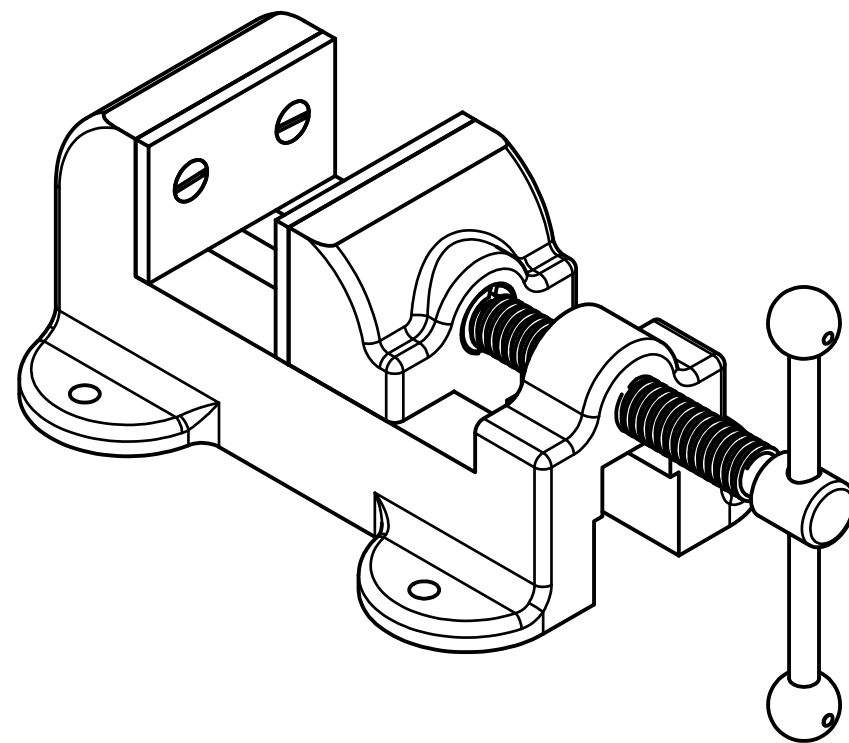


PARTS LIST				
ITEM	QTY	PART NUMBER	MATERIAL	DESCRIPTION
1	1	BASE	CAST IRON	
2	1	SLIDING JAW	CAST IRON	
3	2	JAW PLATE	SAE 3140	
4	1	WISE SCREW	SAE 3140	
5	1	COLLAR	SAE 1020	
6	1	SPECIAL KEY	SAE 1020	
7	1	HANDLE ROD	COLD ROLLED STEEL	
8	2	HANDLE BALL	SAE 1020	
9	2	SLIDE KEY	SAE 1020	
10	2	SET SCREW	SAE 1016	
11	4	FLATHEAD MACHINE SCREW	STAINLESS STEEL	91781A539 - 1/4-20 UNC 1/2 LONG
12	2	TAPER PIN	STAINLESS STEEL	#000



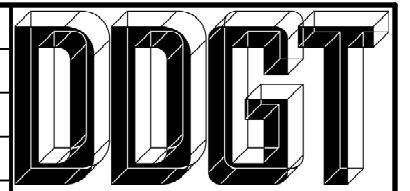
MACHINE VISE ASSEMBLY
SCALE 1/2

GENERAL NOTES:

FILLETS AND ROUNDS R.125 UNLESS OTHERWISE SPECIFIED

LEGEND:

- ∅ DIAMETER
- R RADIUS
- ° DEGREES
- ⌊ COUNTERBORE
- ∨ COUNTERSINK
- ∇ DEPTH



DIGITAL DESIGN
GRAPHICS
TECHNOLOGY

WWW.DDGT.NET



**Cosmic
Curiosities**

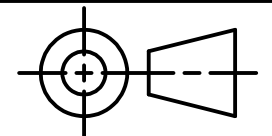
Space Themed Toys and Puzzles

Sebastian Zepeda

Phone: (707) 337-5558

CosmicToysAndPuzzles@gmail.com

http://ddgt.net/StudentPages/szepeda



TOLERANCES UNLESS SPECIFIED:
DECIMAL INCHES:
X = ±.020
XX = ±.010
XXX = ±.005
FRACTIONAL ±1/64"
ANGLES ±1 DEGREE

SURFACES $\sqrt{\quad}$

CLASS: DDGT 240

ASSIGNMENT #: #38

INVENTOR DRAWING NAME:
MACHINE VISE

FIG #: 14-71

MANAGER: G. STROMMEN

DRAFTER: S. ZEPEDA

DATE: 10/1/2023

SCALE: AS NOTED

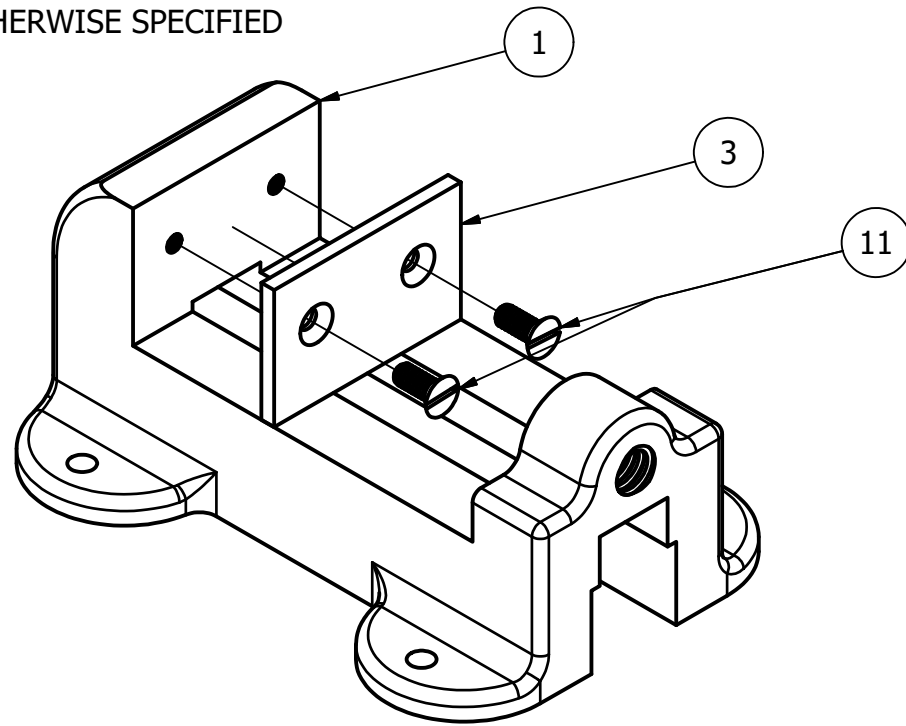
PAGE #: 1 OF 6

GENERAL NOTES:

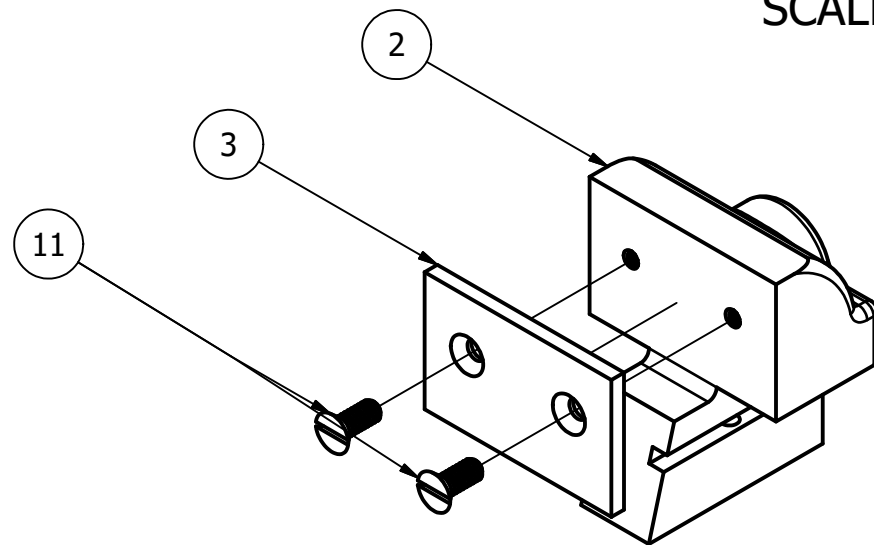
FILLETS AND ROUNDS R.125 UNLESS OTHERWISE SPECIFIED

LEGEND:

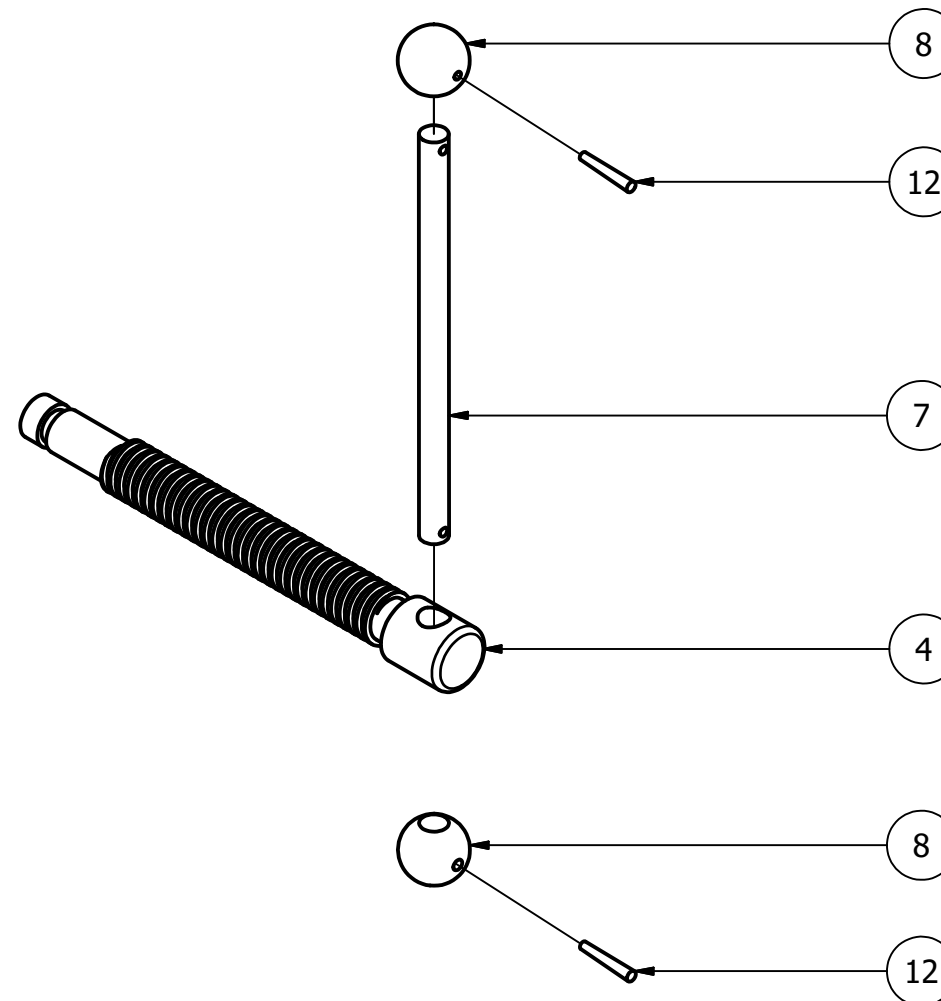
- ∅ DIAMETER
- R RADIUS
- ° DEGREES
- COUNTERBORE
- ∨ COUNTERSINK
- ∇ DEPTH



STEP 1 ASSEMBLY
EXPLODED VIEW
SCALE 1 / 2



STEP 2 ASSEMBLY
EXPLODED VIEW
SCALE 1 / 2



STEP 3 SUB-ASSEMBLY
EXPLODED VIEW
SCALE 1 / 2

PARTS LIST		
ITEM	QTY	PART NUMBER
1	1	BASE
2	1	SLIDING JAW
3	2	JAW PLATE
4	1	WISE SCREW
7	1	HANDLE ROD
8	2	HANDLE BALL
11	4	FLATHEAD MACHINE SCREW
12	2	TAPER PIN



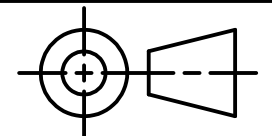
DIGITAL DESIGN
GRAPHICS
TECHNOLOGY

WWW.DDGT.NET



**Cosmic
Curiosities**
Space Themed Toys and Puzzles
Sebastian Zepeda

Phone: (707) 337-5558
CosmicToysAndPuzzles@gmail.com
http://ddgt.net/StudentPages/szepeda



TOLERANCES UNLESS SPECIFIED:
DECIMAL INCHES:
X = ±.020
XX = ±.010
XXX = ±.005
FRACTIONAL ±1/64"
ANGLES ±1 DEGREE
SURFACES ³²∇

CLASS: DDGT 240

ASSIGNMENT #: #38

INVENTOR DRAWING NAME:
MACHINE VISE

FIG #: 14-71

MANAGER: G. STROMMEN

DRAFTER: S. ZEPEDA

DATE: 10/1/2023

SCALE: AS NOTED

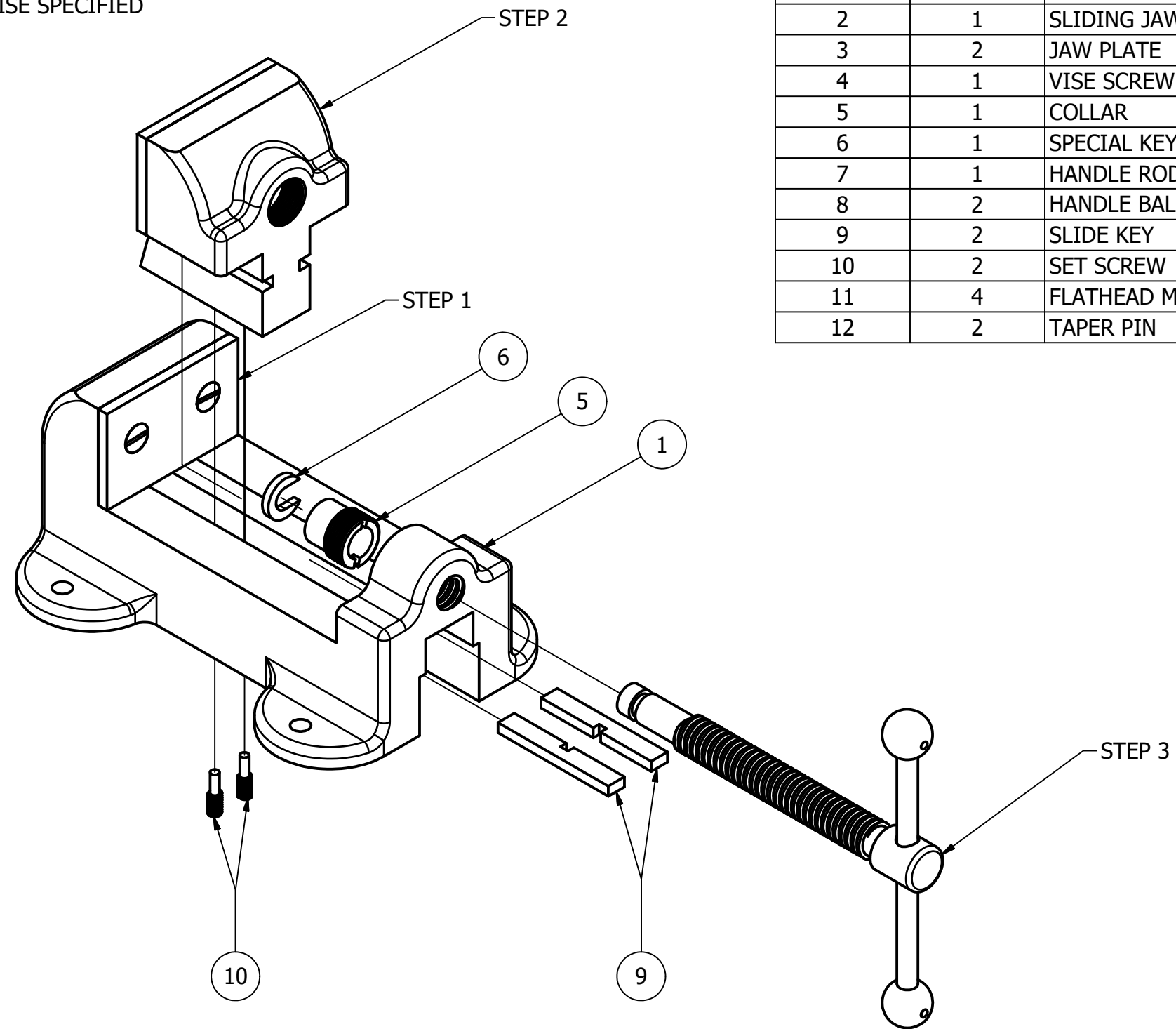
PAGE #: 2 OF 6

GENERAL NOTES:

FILLETS AND ROUNDS R.125 UNLESS OTHERWISE SPECIFIED

LEGEND:

- ∅ DIAMETER
- R RADIUS
- ° DEGREES
- ┌┐ COUNTERBORE
- ∇ COUNTERSINK
- ∇ DEPTH



STEP 4
EXPLODED VIEW
SCALE 1 / 2

PARTS LIST		
ITEM	QTY	PART NUMBER
1	1	BASE
2	1	SLIDING JAW
3	2	JAW PLATE
4	1	WISE SCREW
5	1	COLLAR
6	1	SPECIAL KEY
7	1	HANDLE ROD
8	2	HANDLE BALL
9	2	SLIDE KEY
10	2	SET SCREW
11	4	FLATHEAD MACHINE SCREW
12	2	TAPER PIN



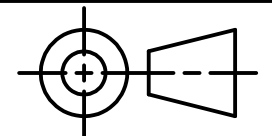
DIGITAL DESIGN
GRAPHICS
TECHNOLOGY

WWW.DDGT.NET



**Cosmic
Curiosities**
Space Themed Toys and Puzzles
Sebastian Zepeda

Phone: (707) 337-5558
CosmicToysAndPuzzles@gmail.com
http://ddgt.net/StudentPages/szepeda



TOLERANCES UNLESS SPECIFIED:
DECIMAL INCHES:
X = ±.020
XX = ±.010
XXX = ±.005
FRACTIONAL ±1/64"
ANGLES ±1 DEGREE
SURFACES 32

CLASS: DDGT 240

ASSIGNMENT #: #38

INVENTOR DRAWING NAME:
MACHINE VISE

FIG #: 14-71

MANAGER: G. STROMMEN

DRAFTER: S. ZEPEDA

DATE: 10/1/2023

SCALE: AS NOTED

PAGE #: 3 OF 6

GENERAL NOTES:

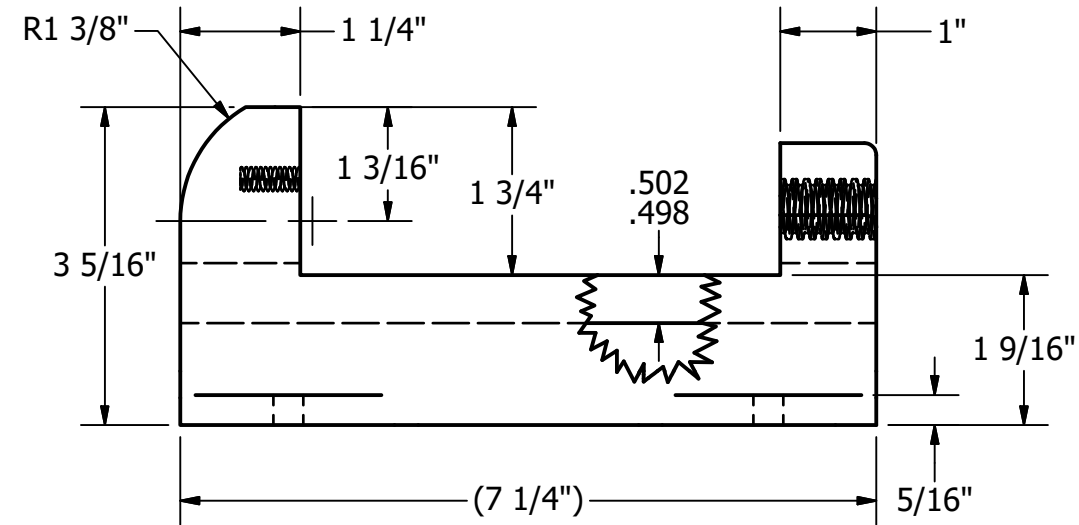
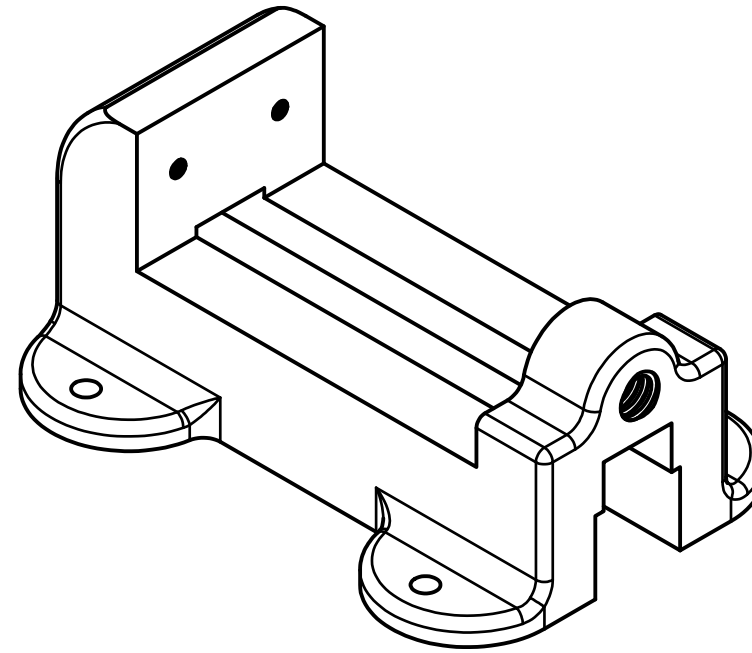
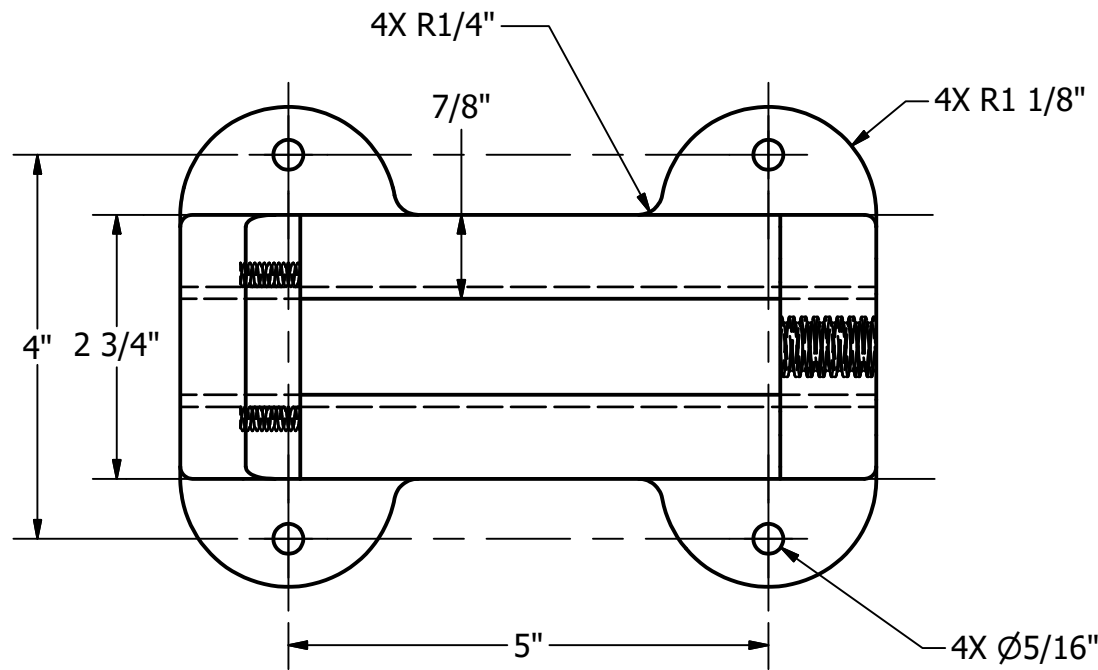
FILLETS AND ROUNDS R.125 UNLESS OTHERWISE SPECIFIED

PARTS LIST

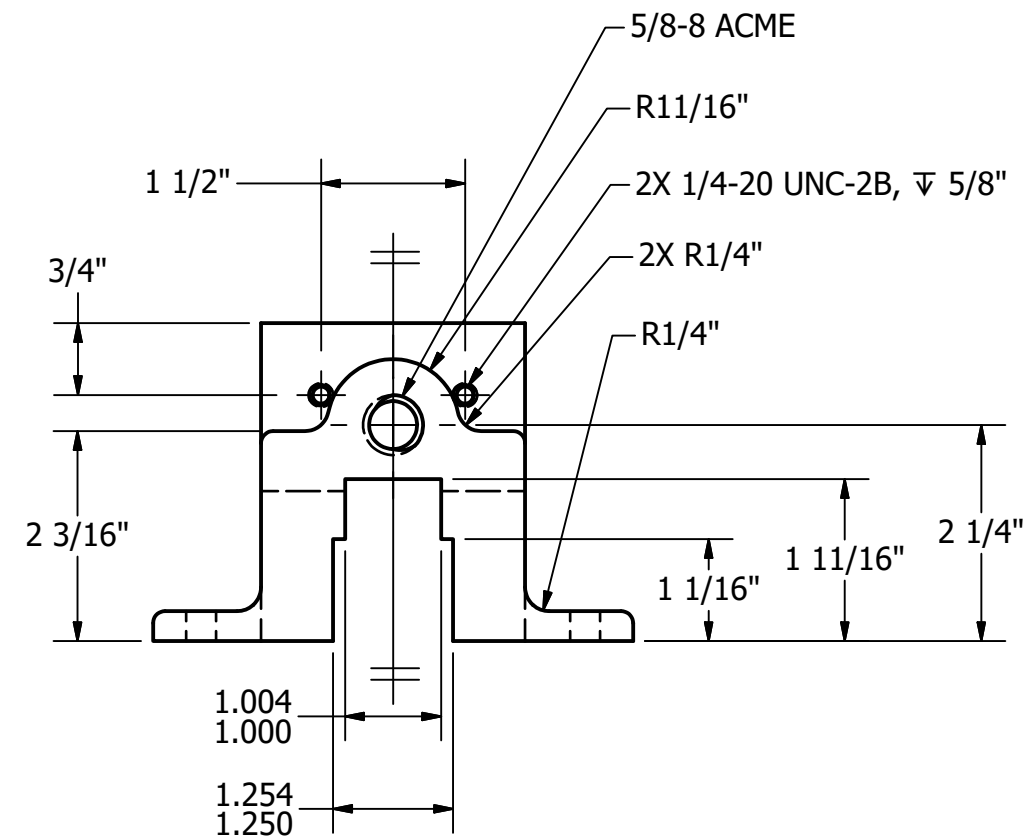
ITEM	QTY	PART NUMBER
1	1	BASE

LEGEND:

- ∅ DIAMETER
- R RADIUS
- ° DEGREES
- COUNTERBORE
- ∇ COUNTERSINK
- ▽ DEPTH



BASE
SCALE 1 / 2



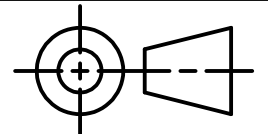
DIGITAL DESIGN
GRAPHICS
TECHNOLOGY

WWW.DDGT.NET



**Cosmic
Curiosities**
Space Themed Toys and Puzzles
Sebastian Zepeda

Phone: (707) 337-5558
CosmicToysAndPuzzles@gmail.com
http://ddgt.net/StudentPages/szepeda



TOLERANCES UNLESS SPECIFIED:
DECIMAL INCHES:
X = ±.020
XX = ±.010
XXX = ±.005
FRACTIONAL ±1/64"
ANGLES ±1 DEGREE
SURFACES 32

CLASS: DDGT 240

ASSIGNMENT #: #38

INVENTOR DRAWING NAME:
MACHINE VISE

FIG #: 14-71

MANAGER: G. STROMMEN

DRAFTER: S. ZEPEDA

DATE: 10/1/2023

SCALE: AS NOTED

PAGE #: 4 OF 6

PARTS LIST		
ITEM	QTY	PART NUMBER
2	1	SLIDING JAW

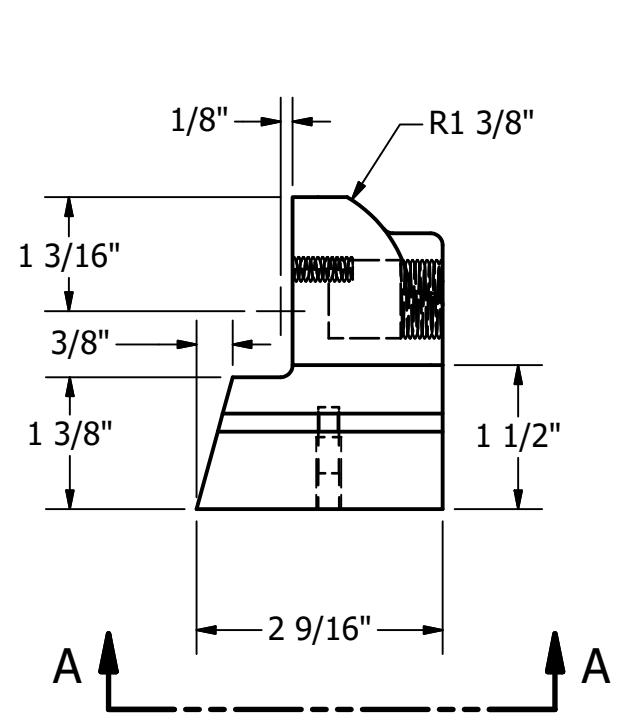
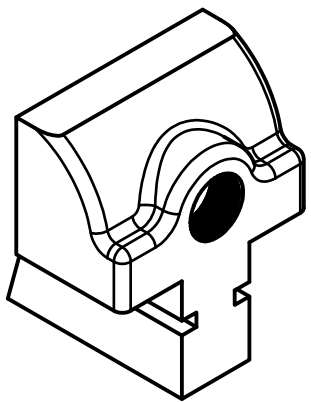


DIGITAL DESIGN
GRAPHICS
TECHNOLOGY

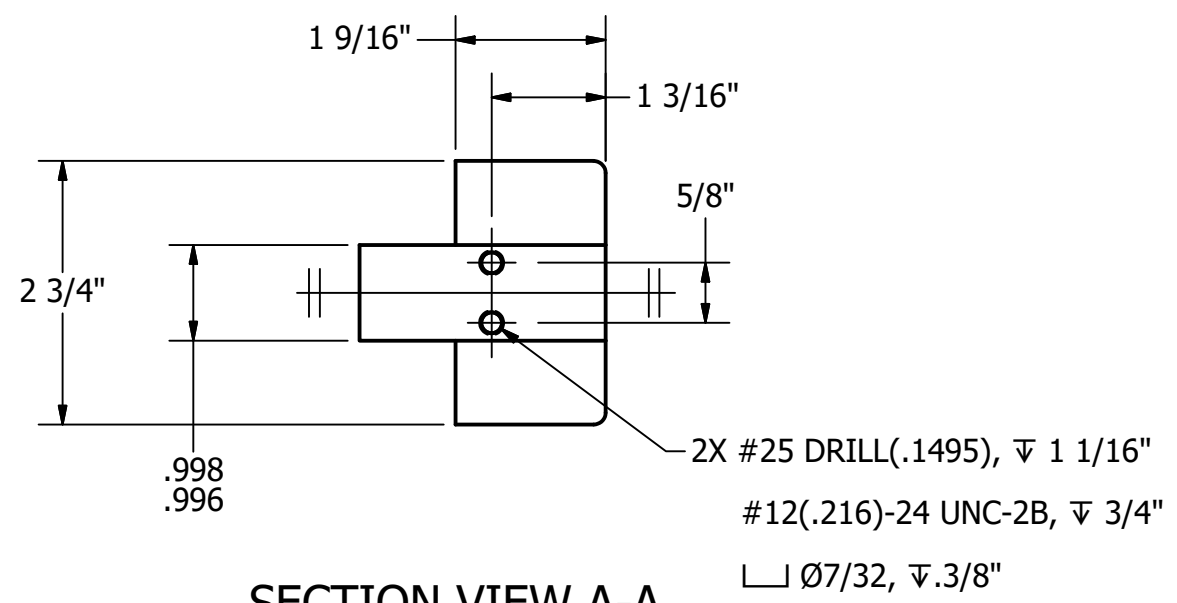
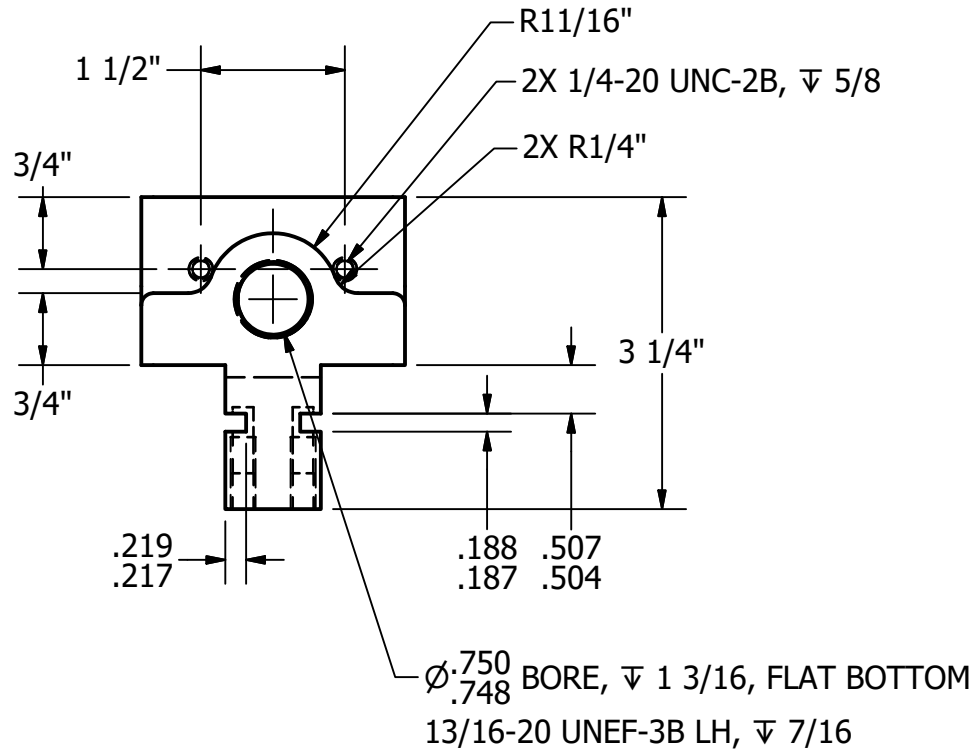
WWW.DDGT.NET

Cosmic Curiosities
Space Themed Toys and Puzzles
Sebastian Zepeda

Phone: (707) 337-5558
CosmicToysAndPuzzles@gmail.com
http://ddgt.net/StudentPages/szepeda



SLIDING JAW
SCALE 1 / 2

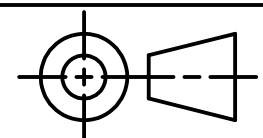


SECTION VIEW A-A
SCALE 1 / 2

GENERAL NOTES:
FILLETS AND ROUNDS R.125 UNLESS OTHERWISE SPECIFIED

LEGEND:

- ∅ DIAMETER
- R RADIUS
- ° DEGREES
- COUNTERBORE
- ∨ COUNTERSINK
- √ DEPTH



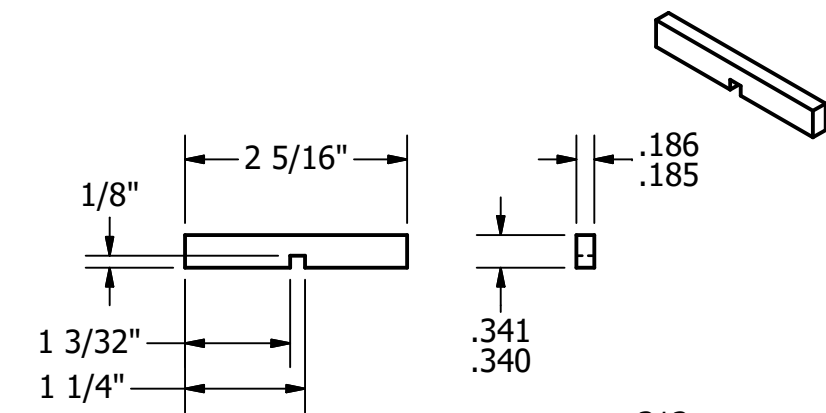
TOLERANCES UNLESS SPECIFIED:
DECIMAL INCHES:
X = ±.020
XX = ±.010
XXX = ±.005
FRACTIONAL ±1/64"
ANGLES ±1 DEGREE
SURFACES 32

CLASS:	DDGT 240
ASSIGNMENT #:	#38
INVENTOR DRAWING NAME:	MACHINE VISE
FIG #:	14-71
MANAGER:	G. STROMMEN
DRAFTER:	S. ZEPEDA
DATE:	10/1/2023
SCALE:	AS NOTED
PAGE #:	5 OF 6

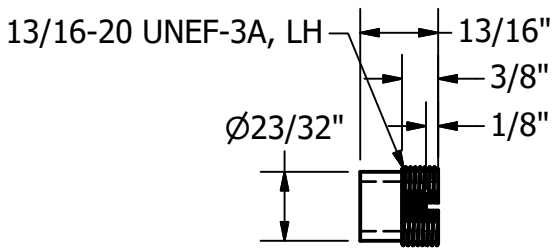
GENERAL NOTES:

FILLETS AND ROUNDS R.125 UNLESS OTHERWISE SPECIFIED

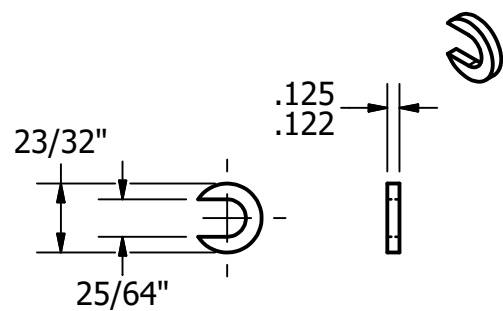
#12(.216)-24 UNC-2A



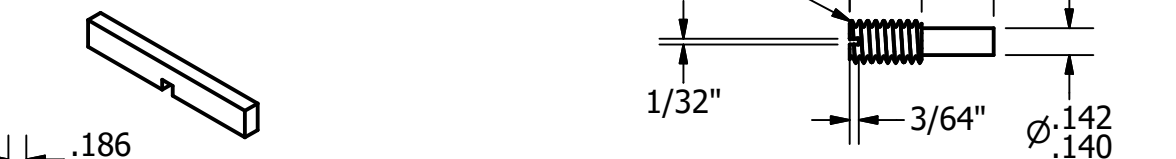
SLIDE KEY
SCALE 1 / 2



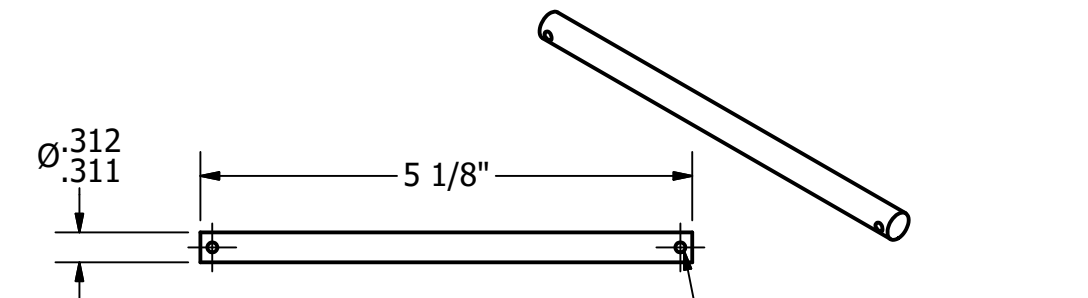
COLLAR
SCALE 1 / 2



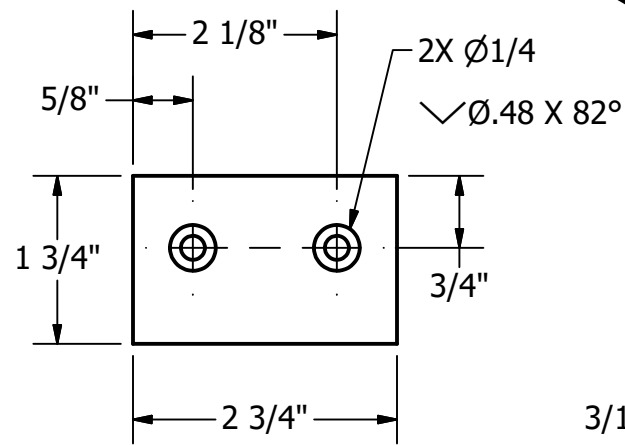
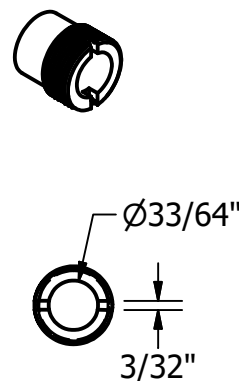
SPECIAL KEY
SCALE 1 / 2



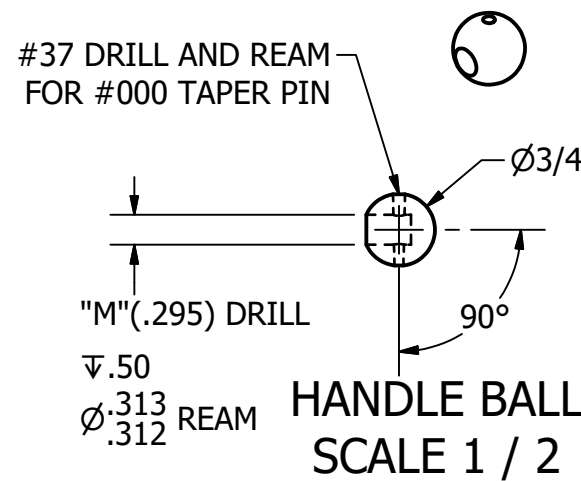
SET SCREW
SCALE 1 : 1



HANDLE ROD
SCALE 1 / 2



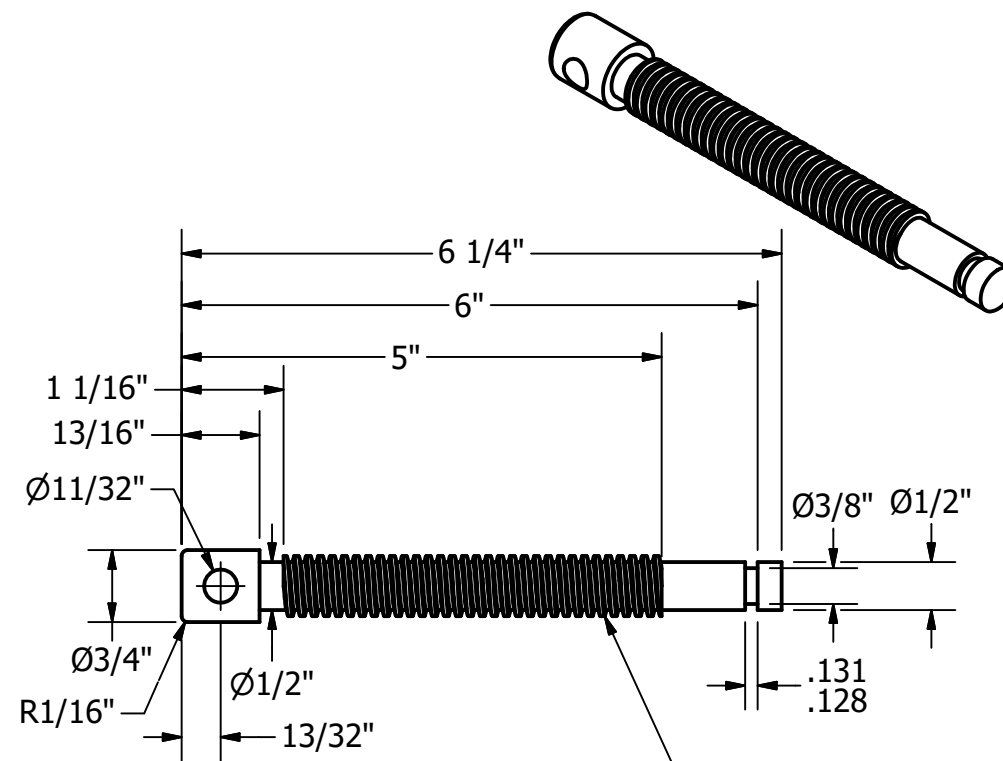
JAW PLATE
SCALE 1 / 2



HANDLE BALL
SCALE 1 / 2

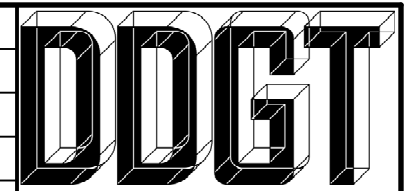
LEGEND:

- Ø DIAMETER
- R RADIUS
- ° DEGREES
- COUNTERBORE
- ∇ COUNTERSINK
- ∇ DEPTH



WISE SCREW
SCALE 1 / 2

PARTS LIST		
ITEM	QTY	PART NUMBER
3	2	JAW PLATE
4	1	WISE SCREW
5	1	COLLAR
6	1	SPECIAL KEY
7	1	HANDLE ROD
8	2	HANDLE BALL
9	2	SLIDE KEY
10	2	SET SCREW



DIGITAL DESIGN
GRAPHICS
TECHNOLOGY

WWW.DDGT.NET



Space Themed Toys and Puzzles
Sebastian Zepeda

Phone: (707) 337-5558
CosmicToysAndPuzzles@gmail.com
http://ddgt.net/StudentPages/szepeda

TOLERANCES UNLESS SPECIFIED:
DECIMAL INCHES:
X = ±.020
XX = ±.010
XXX = ±.005
FRACTIONAL ±1/64"
ANGLES ±1 DEGREE
SURFACES 32

CLASS:	DDGT 240
ASSIGNMENT #:	#38
INVENTOR DRAWING NAME:	MACHINE VISE
FIG #:	14-71
MANAGER:	G. STROMMEN
DRAFTER:	S. ZEPEDA
DATE:	10/1/2023
SCALE:	AS NOTED
PAGE #:	6 OF 6