

CASTER ASSEMBLY
SCALE 1 : 1

PARTS LIST				
ITEM	QTY	PART NUMBER	MATERIAL	DESCRIPTION
1	1	TOP PLATE	MALLEABLE IRON	
2	1	WHEEL	MALLEABLE IRON	
3	2	AXLE SUPPORT	MALLEABLE IRON	
4	1	AXLE	SAE 1020	
5	2	BUSHING	BRONZE	
6	4	HEX HEAD SCREW	STEEL	MC MASTER-CARR 91280A1001.5mm, 40mm LONG
7	4	LOCK WASHER	STEEL	MC MASTER-CARR 93837A350 FOR M10 SCREW
8	4	HEX NUT	STEEL	MC MASTER-CARR 90593A008 M10x 1.5mm

GENERAL NOTES:

FASTEN ASSEMBLY TO A 6mm STEEL PLATE BY FOUR M10 X 40mm LONG HEX HEAD BOLTS, NUTS AND LOCK WASHERS

ROUNDS AND FILLETS R3

LEGEND:

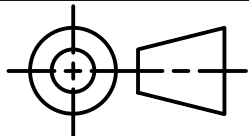
- Ø DIAMETER
- R RADIUS
- ° ANGLE
- COUNTERBORE/SPOTFACE

METRIC



DIGITAL DESIGN
GRAPHICS
TECHNOLOGY

WWW.DDGT.NET



TOLERANCES UNLESS SPECIFIED:
MILLIMETERS: ±5
X = ±.025
XX = ±.012

FRACTIONAL ±1/64"
ANGLES ±1 DEGREE

SURFACES ³²✓

CLASS: DDGT 120

ASSIGNMENT #: 67

INVENTOR DRAWING NAME:
CASTER ASSEMBLY

FIG #: 9-51

MANAGER: G. STROMMEN

DRAFTER: P. BELL

DATE: 12/9/2024

SCALE: AS NOTED

PAGE #: 1 OF 4

FIT	BETWEEN PARTS
H8/F7	"AXLE" AND "BUSHING"
H7/f6	"AXLE SUPPORT" AND "BUSHING"
H8/f7	"WHEEL" AND AXLE"

PARTS LIST		
ITEM	QTY	PART NUMBER
1	1	TOP PLATE
2	1	WHEEL
3	2	AXLE SUPPORT
4	1	AXLE
5	2	BUSHING



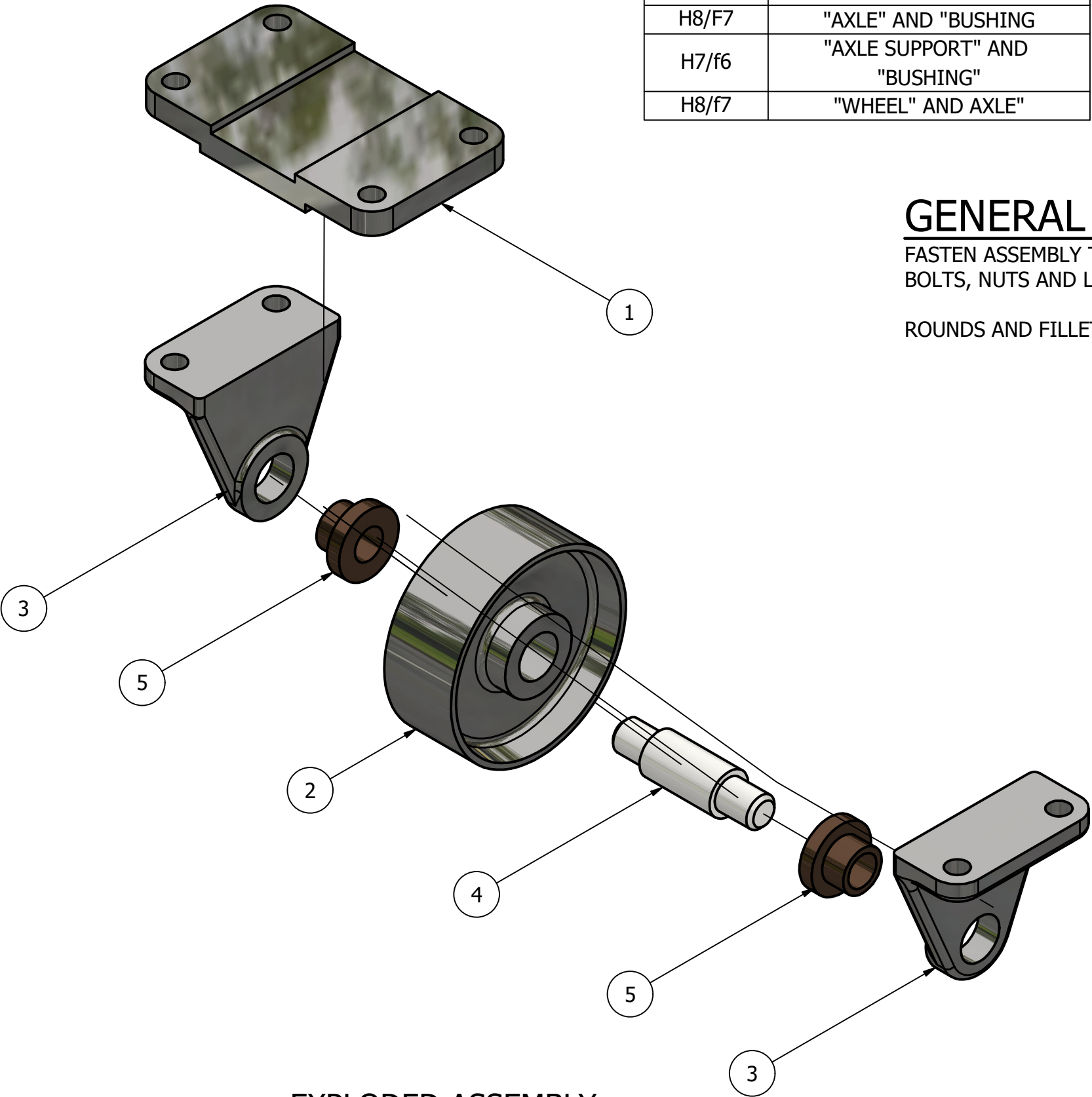
DIGITAL DESIGN
GRAPHICS
TECHNOLOGY

WWW.DDGT.NET

GENERAL NOTES:

FASTEN ASSEMBLY TO A 6mm STEEL PLATE BY FOUR M10 X 40mm LONG HEX HEAD BOLTS, NUTS AND LOCK WASHERS

ROUNDS AND FILLETS R3

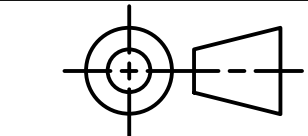


EXPLODED ASSEMBLY
SCALE 1 / 2

LEGEND:

Ø DIAMETER
R RADIUS
° ANGLE
□ COUNTERBORE/SPOTFACE

METRIC



TOLERANCES UNLESS SPECIFIED:
MILLIMETERS: ±5
X = ±.025
XX = ±.012
FRACTIONAL ±1/64"
ANGLES ±1 DEGREE
SURFACES ³²✓

CLASS: DDGT 120

ASSIGNMENT #: 67

INVENTOR DRAWING NAME:
CASTER ASSEMBLY

FIG #: 9-51

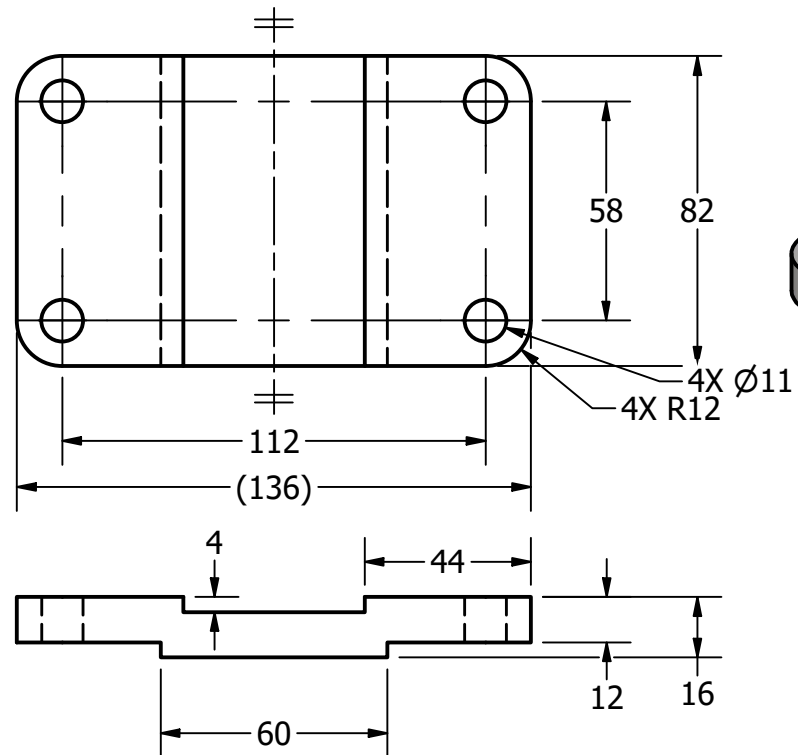
MANAGER: G. STROMMEN

DRAFTER: P. BELL

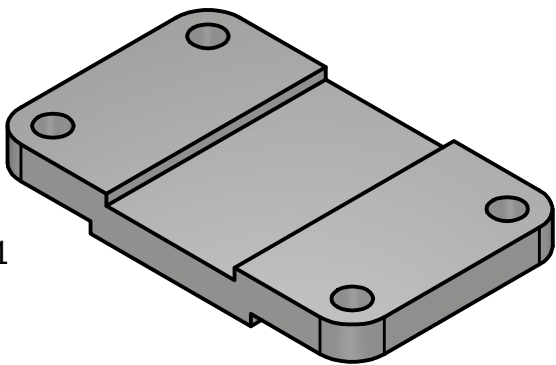
DATE: 12/9/2024

SCALE: AS NOTED

PAGE #: 2 OF 4



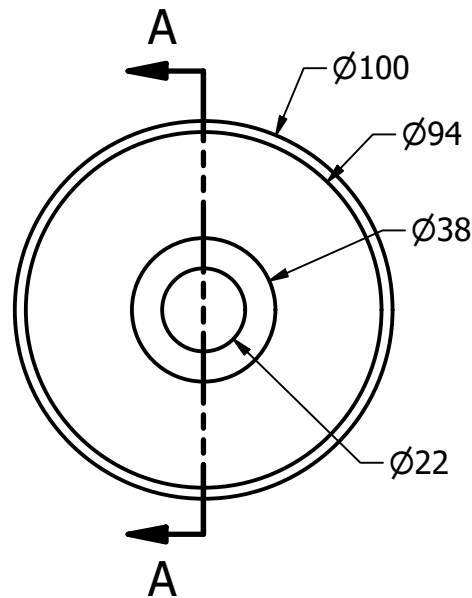
TOP PLATE
SCALE 1 / 2



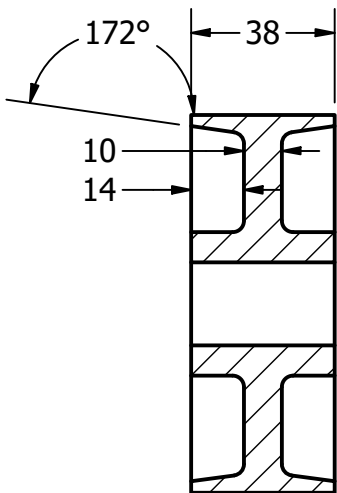
GENERAL NOTES:

FASTEN ASSEMBLY TO A 6mm STEEL PLATE BY FOUR M10 X 40mm LONG HEX HEAD BOLTS, NUTS AND LOCK WASHERS

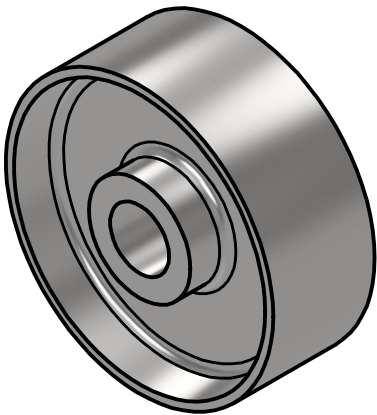
ROUNDS AND FILLETS R3



SHEEL
SCALE 1 / 2



SECTION A-A
SCALE 1 / 2



LEGEND:

- Ø DIAMETER
- R RADIUS
- ° ANGLE
- COUNTERBORE/SPOTFACE

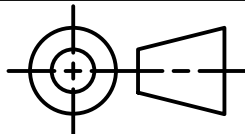
METRIC

PARTS LIST		
ITEM	QTY	PART NUMBER
1	1	TOP PLATE
2	1	WHEEL



DIGITAL DESIGN
GRAPHICS
TECHNOLOGY

WWW.DDGT.NET



TOLERANCES UNLESS SPECIFIED:
MILLIMETERS: ±5
X = ±.025
XX = ±.012
FRACTIONAL ±1/64"
ANGLES ±1 DEGREE
SURFACES ³²✓

CLASS: DDGT 120

ASSIGNMENT #: 67

INVENTOR DRAWING NAME:
CASTER ASSEMBLY

FIG #: 9-51

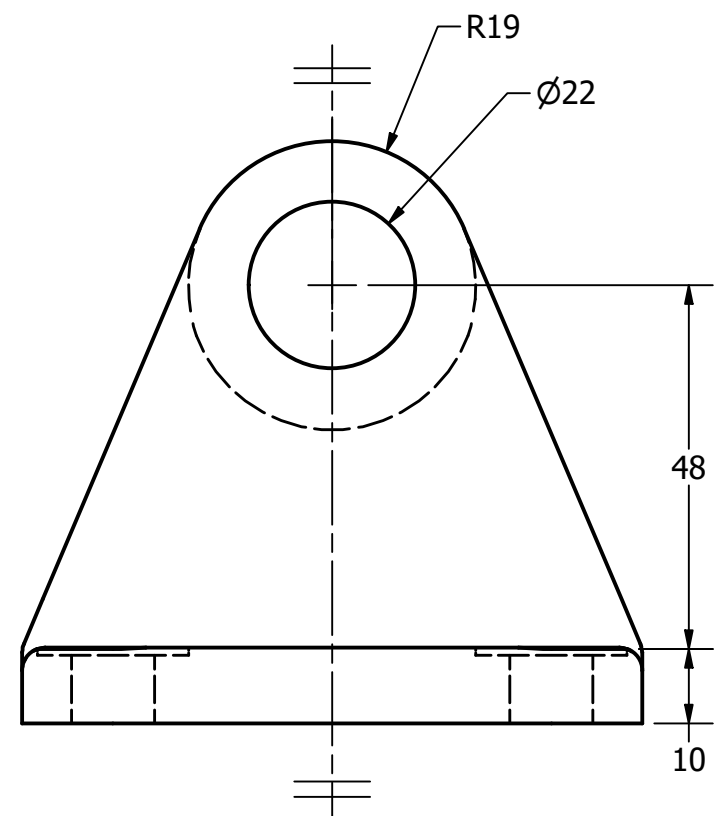
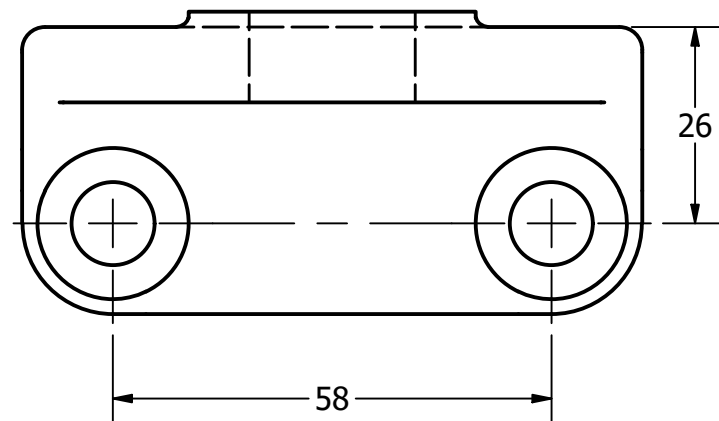
MANAGER: G. STROMMEN

DRAFTER: P. BELL

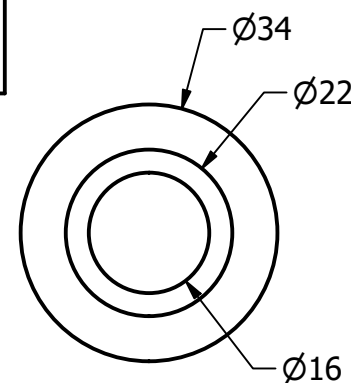
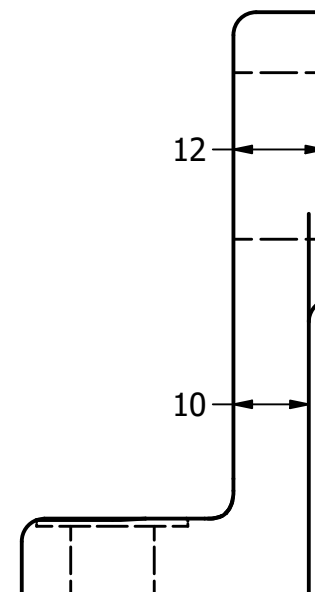
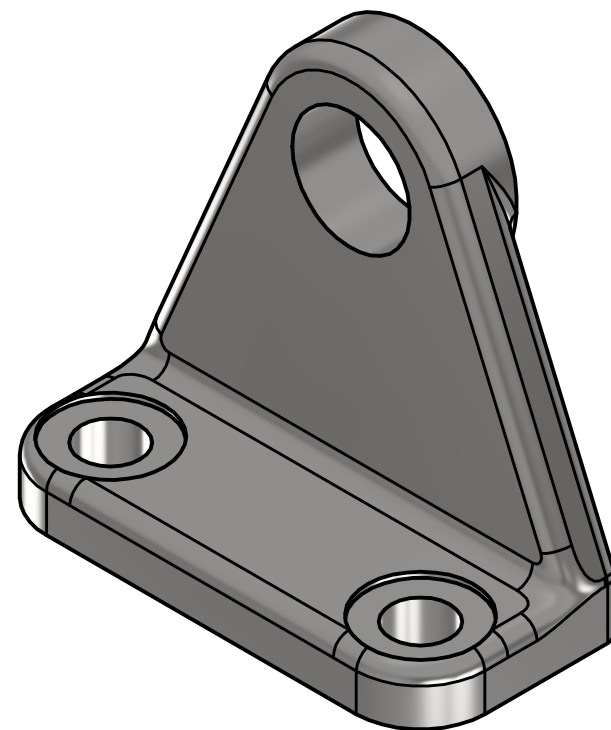
DATE: 12/9/2024

SCALE: AS NOTED

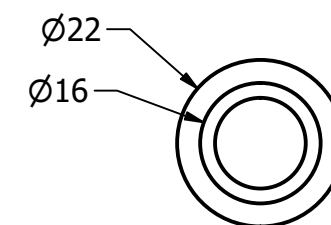
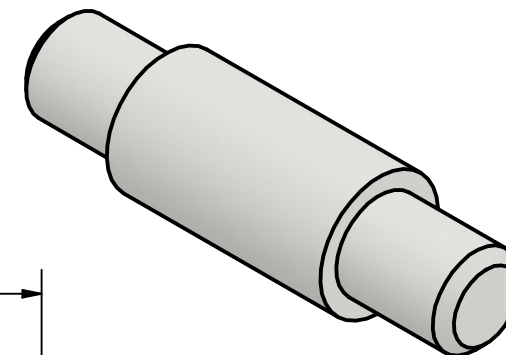
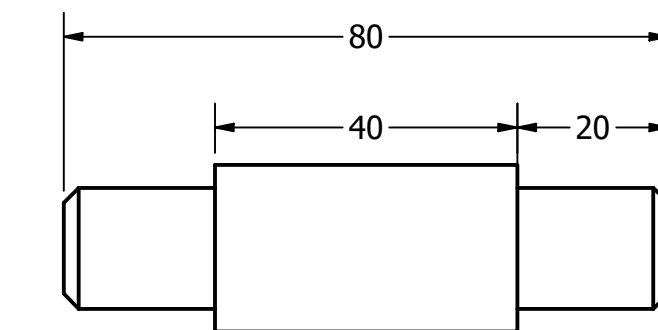
PAGE #: 3 OF 4



AXLE SUPPORT
SCALE 1 : 1



BUSHING
SCALE 1 : 1



AXLE
SCALE 1 : 1

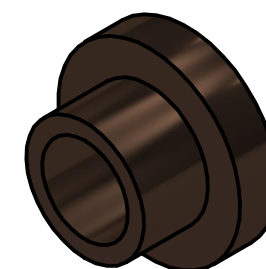
GENERAL NOTES:

FASTEN ASSEMBLY TO A 6mm STEEL PLATE BY FOUR M10 X 40mm LONG HEX HEAD BOLTS, NUTS AND LOCK WASHERS

ROUNDS AND FILLETS R3

LEGEND:

Ø DIAMETER
R RADIUS
° ANGLE
□ COUNTERBORE/SPOTFACE



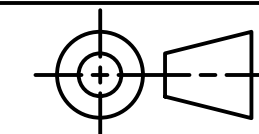
METRIC

PARTS LIST		
ITEM	QTY	PART NUMBER
3	2	AXLE SUPPORT
4	1	AXLE
5	2	BUSHING

DDGT

DIGITAL DESIGN
GRAPHICS
TECHNOLOGY

WWW.DDGT.NET



TOLERANCES UNLESS SPECIFIED:
MILLIMETERS: ±5
X = ±.025
XX = ±.012

FRACTIONAL ±1/64"
ANGLES ±1 DEGREE
SURFACES $\sqrt{32}$

CLASS: DDGT 120

ASSIGNMENT #: 67

INVENTOR DRAWING NAME:
CASTER ASSEMBLY

FIG #: 9-51

MANAGER: G. STROMMEN

DRAFTER: P. BELL

DATE: 12/9/2024

SCALE: AS NOTED

PAGE #: 4 OF 4