

LEGEND:

Ø DIAMETER
° ANGLE

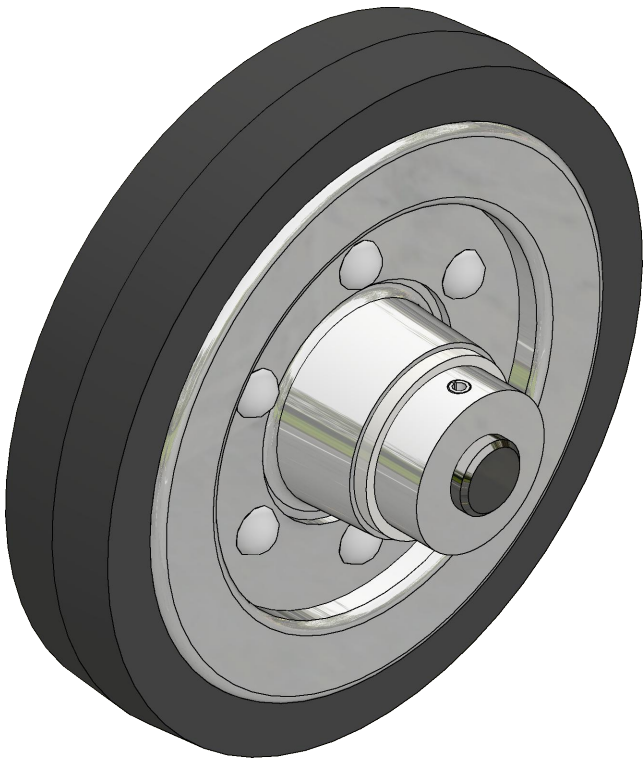
GENERAL NOTES:

ALL FILLETS HAVE R.12" UNLESS OTHERWISE NOTED
ALL CHAMFERS ARE .06" X 45° UNLESS OTHERWISE NOTED

PARTS LIST				
ITEM	QTY	PART NUMBER	MATERIAL	DESCRIPTION
1	1	AXLE	STEEL	
2	1	BUSHING	BRONZE	OILLESS
3	1	HUB	ALUMINUM	
4	1	COLLAR	ALUMINUM	
5	2	SIDE PLATE	ALUMINUM	.12" UNIFORM THICKNESS
6	1	WHEEL	HARD RUBBER	
7	6	RIVET	STANDARD	Ø.31, 1.00" LONG LENGTH, EQUALLY SPACED
8	2	WASHER	STANDARD	I.D. 1.00", O.D. 2.12" .18 THICK
9	1	SPRING PIN	STANDARD	Ø.25, 1.875" LONG (MCMASTER-CARR 98296A932)



WHEEL ASSEMBLY
SCALE 1 / 2

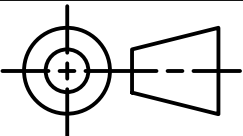


WHEEL ASSEMBLY (ALT VIEW)
SCALE 1 / 2



DIGITAL DESIGN
GRAPHICS
TECHNOLOGY

WWW.DDGT.NET



TOLERANCES UNLESS SPECIFIED:
DECIMAL INCHES:
X = ±.020
XX = ±.010
XXX = ±.005
FRACTIONAL ±1/64"
ANGLES ±1 DEGREE
SURFACES ³²✓

CLASS: DDGT 121

ASSIGNMENT #: 10

INVENTOR DRAWING NAME:
WHEEL ASSEMBLY

FIG #: 11-55

MANAGER: G. STROMNEN

DRAFTER: P. BELL

DATE: 2/4/2025

SCALE: AS NOTED

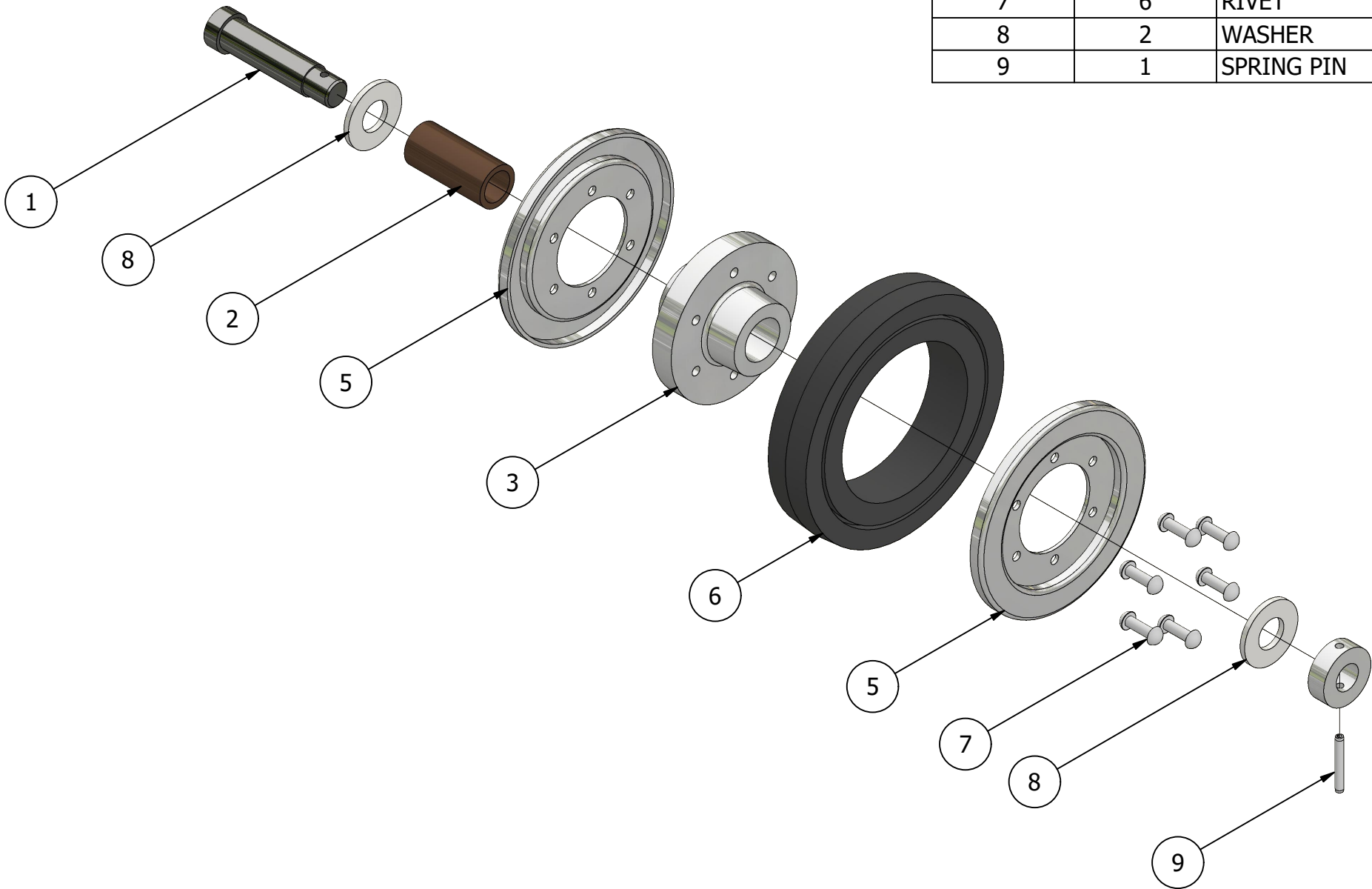
PAGE #: 1 OF 3

GENERAL NOTES:

ALL FILLETS HAVE R.12" UNLESS OTHERWISE NOTED
ALL CHAMFERS ARE .06" X 45° UNLESS OTHERWISE NOTED

LEGEND:

Ø DIAMETER
° ANGLE



WHEEL EXPLODED ASSEMBLY
SCALE 1 / 4

PARTS LIST		
ITEM	QTY	PART NUMBER
1	1	AXLE
2	1	BUSHING
3	1	HUB
4	1	COLLAR
5	2	SIDE PLATE
6	1	WHEEL
7	6	RIVET
8	2	WASHER
9	1	SPRING PIN

DDGT

DIGITAL DESIGN
GRAPHICS
TECHNOLOGY

WWW.DDGT.NET

TOLERANCES UNLESS SPECIFIED:
DECIMAL INCHES:
X = ±.020
XX = ±.010
XXX = ±.005
FRACTIONAL ±1/64"
ANGLES ±1 DEGREE
SURFACES ³²✓

CLASS: DDGT 121

ASSIGNMENT #: 10

INVENTOR DRAWING NAME:
WHEEL ASSEMBLY

FIG #: 11-55

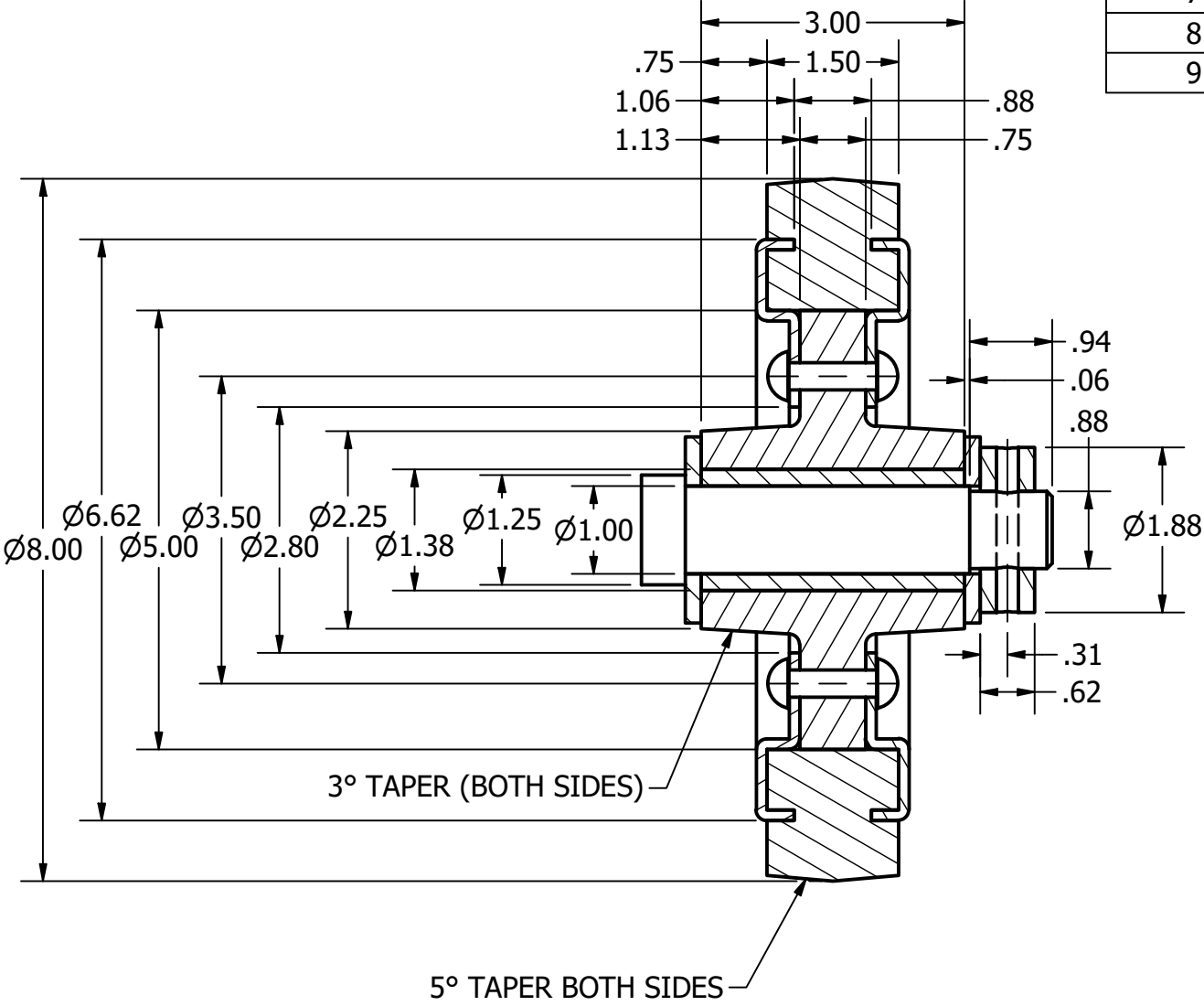
MANAGER: G. STROMNEN

DRAFTER: P. BELL


DATE: 2/4/2025

SCALE: AS NOTED

PAGE #: 2 OF 3

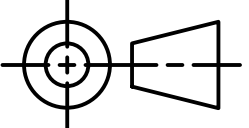


PARTS LIST		
ITEM	QTY	PART NUMBER
1	1	AXLE
2	1	BUSHING
3	1	HUB
4	1	COLLAR
5	2	SIDE PLATE
6	1	WHEEL
7	6	RIVET
8	2	WASHER
9	1	SPRING PIN



DIGITAL DESIGN
GRAPHICS
TECHNOLOGY

WWW.DDGT.NET



TOLERANCES UNLESS SPECIFIED:
DECIMAL INCHES:
X = ±.020
XX = ±.010
XXX = ±.005
FRACTIONAL ±1/64"
ANGLES ±1 DEGREE
SURFACES $\sqrt{32}$

CLASS: DDGT 121

ASSIGNMENT #: 10

INVENTOR DRAWING NAME:
WHEEL ASSEMBLY

FIG #: 11-55

MANAGER: G. STROMNEN

DRAFTER: P. BELL

DATE: 2/4/2025

SCALE: AS NOTED

PAGE #: 3 OF 3

GENERAL NOTES:

ALL FILLETS HAVE R.12" UNLESS OTHERWISE NOTED
ALL CHAMFERS ARE .06" X 45° UNLESS OTHERWISE NOTED

WHEEL SECTION VIEW
SCALE 1 / 2

LEGEND:

Ø DIAMETER
° ANGLE